

S.S. ETHEL EDDY
AND
S.S. JENNETTE SKINNER
SKINNER & EDDY CORPORATION
SEATTLE, WASH.
SCALE: $\frac{1}{2}$ " = 1 FT.
1916

**MIDSHIP SECTION
STEEL FREIGHT STEAMER**
423'-9" OVERALL 410'-5 1/2" BEAM 29'-9" DEPTH.

DEG. 1

LLOYDS NUMERALS

1 ST NUMERAL	54 + 29.75	= 83.75
2 ND "	83.75 x 410.45	= 34375.0
DEPTH (d) =		18'-0"
PROPORTIONS TO BRIDGE Dk. =	10.75	
TO UPPER Dk. =	13.79	

EQUIPMENT NUMBER

PLATING NUMBER	34375
FORECASTLE 41x8 x 1/2"	246
BRIDGE 110x8 x 1/2"	660
POOP 55x8 x 1/2"	330
DECK HOUSES 52x8 x 1/2"	208
EQUIPMENT N°	35819

EQUIPMENT

2 BOWER ANCHORS	7150 LBS. EACH
1 " ANCHOR	6160 "
1 STREAM "	2450 "
1 KEDGE "	1050 "
(ALL STOCKLESS ANCHORS)	
270 FTMS 2 1/2" STUD CHAIN CABLE	
90 " 4 3/8" STEEL WIRE (STREAM)	
120 " 5" " (TOWLINE)	
HAWSEERS 2-8" AND 2-7" - 90 FTMS. EACH	

TRANSVERS BULKHEADS

PLATING

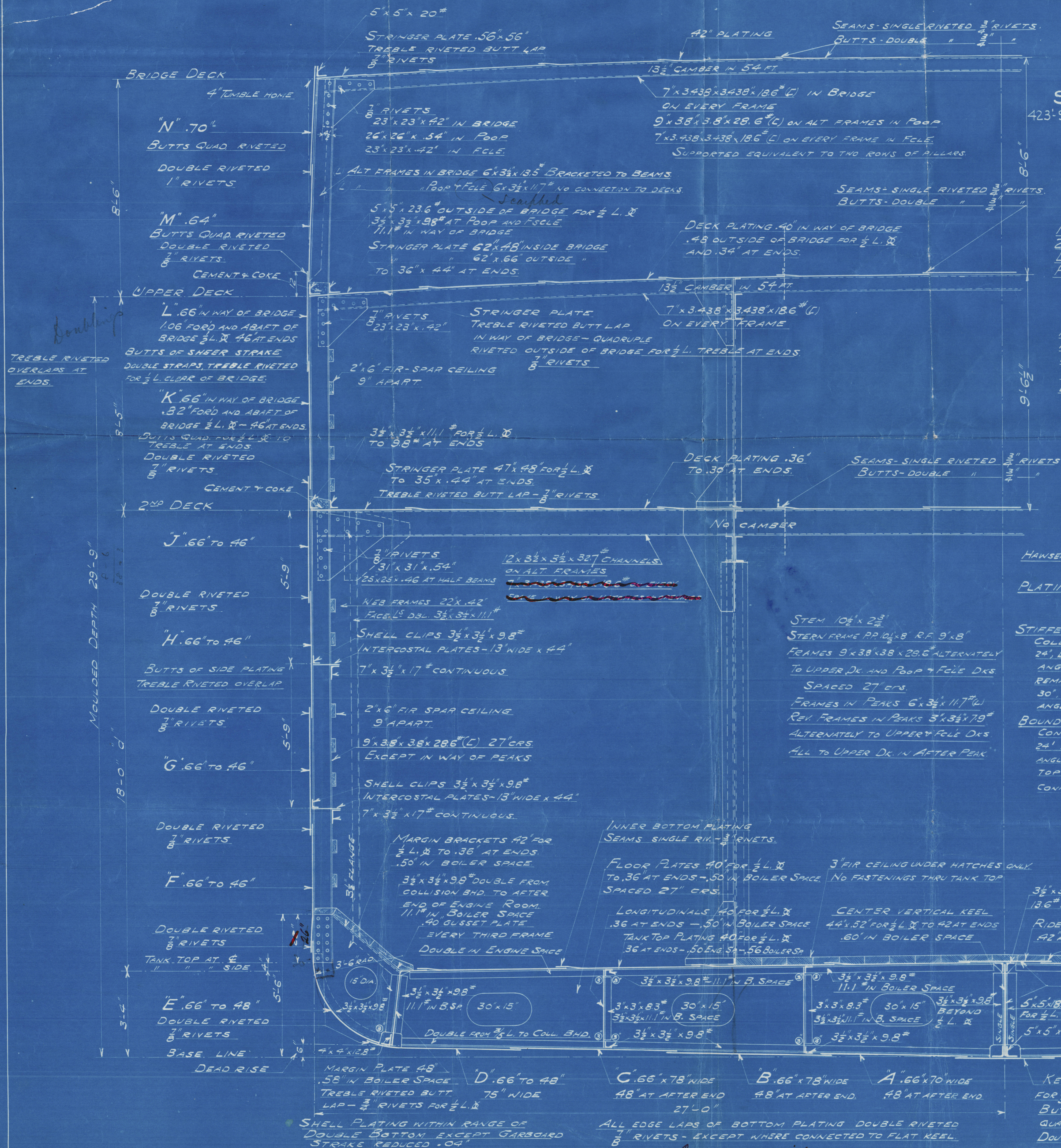
AS PER RULE

STIFFENERS

COLLISION BHD., HOLD 12"x4"x4"x40" (C) SPACED 24", BKT ATTACHMENT: TWEEN DECK 5"x3"x9.8" ANGLE SPACED 24", NO LUG ATTACHMENT. REMAINDER OF BHDS. AS PER RULE SPACED 30", LUG ATTACHMENT: TWEEN DECK 5"x3"x9.8" ANGLE SPACED 30", NO LUG ATTACHMENT.

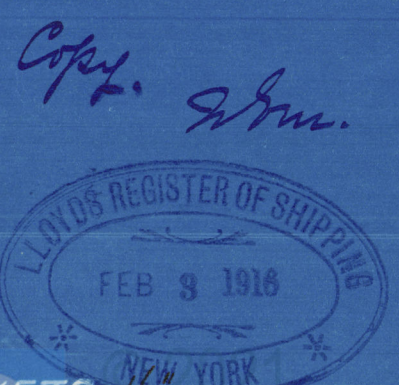
BOUNDARY BARS

CONNECTION TO TANK TOP AND SHELL BELOW 24" BELOW TOP OF BULKHEAD 5"x5"x181" SINGLE ANGLE, CONNECTION TO SHELL ABOVE 24" BELOW TOP OF BULKHEAD 3 1/2"x3 1/2"x9.8" SINGLE ANGLE CONNECTION TO DECK 3"x3"x72" SINGLE ANGLE



3 1/2"x3 1/2"x12.4"
13.6" IN BOILER SPACE
RIDER PLATE 44"x52" FOR 1/2 L. &
42" AT ENDS - .56 IN BOILER SPACE
DOUBLE RIVETED EDGE LAP
8" RIVETS
RIDER PLATE AND
CENTER VERTICAL KEEL
TREBLE RIVETED BUTT LAPS
7" RIVETS

KEEL PLATE 47"x102"
FOR 1/2 L. & TO .72" AT ENDS
BUTTS-OVERLAPED - 1/2" RIVETS
QUADRUPLE RIVETED - 1/2" RIVETS
DOUBLE RIVETED EDGE LAP - 7" RIVETS



M.S.
1. "Niels Nielsen" Sea 472
2. Hanna Nielsen

London
006067-006076-0078

Skinner Eddy Corp. 5/6



006067-006079-0078

