

# MIDSHIP SECTION

S.S. N° 64

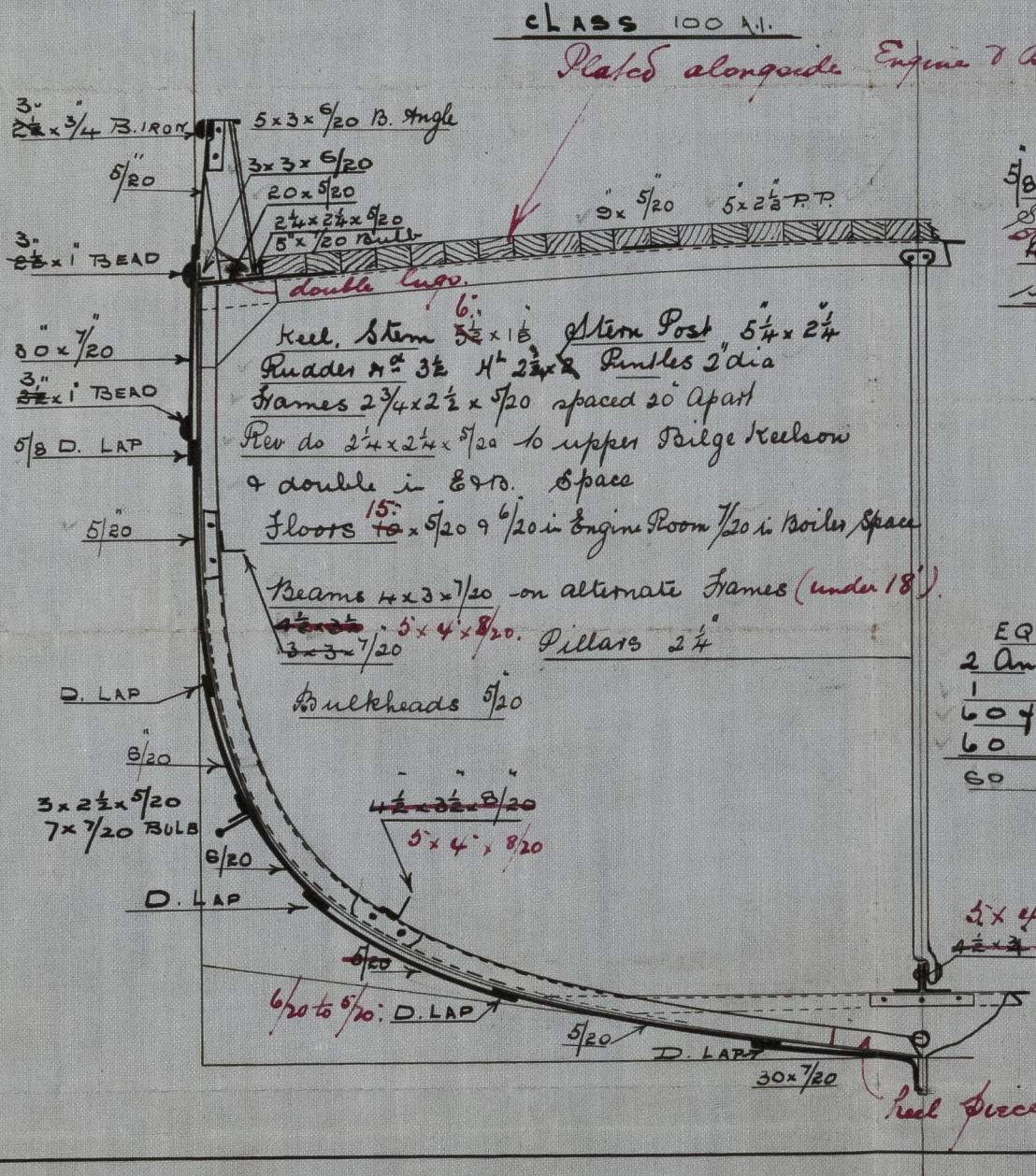
23:10:07

65.0 x 18.0 x 9.9 MLD

SCALE 1/2" = 1 FOOT

CLASS 100 A1.

Placed alongside Engine & Boiler openings.



5/8 Rivets

Shear & Garboard Strakes Butted & double rivetted  
~~Steel Bulk~~ lapped & double rivetted  
 Steel Stem & Stem Post 1/8 Rivets

1/2 Breadth 9.0

Depth 10.12

1/2 Girth 15.91

35.03. 1<sup>ST</sup> N°

64.08

2244.72 2<sup>ND</sup> N°

## EQUIPMENT.

2 Anchor 3 cut ex stock  
 1 1 3/4  
 60 yathoms 12 1/16 in chain or wire  
 60 5 in Hawser.  
 60 2 1/2 warp

6-633

3-356

C.B.

23 10.07.

W.H. WARREN

SHIPBUILDER

NEW HOLLAND LINE



Lloyd's Register Foundation



N. H. Warren.  
No 64.

Midship Section  
s/s Mowatle  
Hull Rep No 19943

RECEIVED  
KALIAZED  
20 FEB 1968  
LONDON

*S/S Mawette*  
*Hull Report No. 19943*

005961-005980-0108