

T. S. M. V.  
N° 658 M.

MIDSHIP SECTION.

SCALE 1/2" = 1' 00".  
DIMENSIONS: 440' 0" x 57' 0" MLD x 38' 6" MLD TO UPPER DECK.  
TO CLASS 100 A1 AT LLOYDS F.S.S.

THE SCANTLING OF DECK BEAMS ARE IN ACCORDANCE WITH THE REQUIREMENTS OF 1921-22 RULES AT THE SPECIAL REQUEST OF THE OWNERS.

EQUIPMENT NUMERALS

STEERING GEAR HOUSE (24x45x50)	186445549	= 120450
MIDSHIP HOUSE & CASING	21x45x50	= 2441
SALOON HOUSE	24x33x45x50	= 1136
OFFICERS HOUSE	25x45x50	= 968
FORECASTLE	22x45x45	= 2441
		= 45114

EQUIPMENT

3 BOWER ANCHORS	450 LBS EACH STOCKLESS (GRADE ABOVE RULE)
1 STREAM ANCHOR	2020 LBS EX-STOCK
300 LATHS	2 1/2" STUD CHAIN CABLE
120 "	1 1/2" STEAM CHAIN OR 5" STEEL WIRE
150 "	1 1/2" HEMP OR 5/2" STEEL WIRE 10W LINE
2 HAWSEAS	OF 100 LATHS EACH 8 HEMP OR 2 1/2" STEEL WIRE
2 WARTS	OF 100 " 8 HEMP OR 2 1/2" "

NUMERALS

L x (B + D)	= 42045
L x D	= 11391
d	= 2464
d for FRAMING	= 2464

FRAMES. FRAMES SPACED 24 IN FRAMES, 32 FROM AFT PEAK BULKHEAD TO FORWARD 3/4 L AND 24 FORWARD OF 3/4 L (SEE PROFILE). IN WAY OF 5th DECK MAIN FRAME 11' 5 1/2" x 36 B.A. TO 5th DECK WITH 4 1/2" x 36 B.A. SCANTLED AT 30° D° & EXTENDING TO UPPER DECK. CLEAR OF 5th DECK MAIN FRAME 11' 5 1/2" x 36 B.A. WITH 4 1/2" x 36 B.A. SCANTLED AT 30° D° & EXTENDING TO UPPER DECK. ALL FRAMES EXTEND TO UPPER DECK AND IN WAY OF BULBS TO UPPER AND LOWER ALTERNATELY WITH INTERMEDIATE ANGLE FRAMES 4 1/2" x 36 B.A. SCANTLED TO MAIN FRAME. FRAMES IN AFT PEAK 9' 1 1/2" x 36 B.A. CARRIED ALTERNATELY TO UPPER AND LOWER DECK WITH INTERMEDIATE ANGLE FRAMES 4 1/2" x 36 B.A. SCANTLED TO MAIN FRAME. *Frames in aft peak to be increased 1" in depth by fitting the same with 1/2" x 36 B.A. frames to 11' 5 1/2" L.*

DOUBLE BOTTOM. FRAMES: 3 1/2" x 4 1/2" x 36 B.A. IN WATER TIGHT DIVISIONS. DOUBLED FROM 30 L 30" TO COLLISION BULKHEAD. REVERSE FRAMES: 3 1/2" x 4 1/2" x 36 B.A. IN WATER TIGHT DIVISIONS. DOUBLE IN ENGINE SPACE AND THROUGH FLOOR PLATES AND DRACKE 1/4". FLOOR PLATES 5/2" IN WATER TIGHT DIVISIONS AND 1/2" IN ENGINE SPACE AND UNDER THROAT. SOLID PLATES AT EVERY 3rd FRAME. W.T. PLATES TO BE STIFFENED BY VERTICAL ANGLES 3/4" x 4 1/2" x 36 B.A. SPACED 30" APART. AT EVERY FRAME IN ENGINE SPACE AND 1/2" OF 3/4 L AND AFT OF FRAME 30". UNDER BULKHEAD STIFFENER DRACKE 1/4" BULKHEADS AND THROUGH FLOOR PLATES 1/4" PLATED. INTERCOSTALS 1/4" PLATED TO FLOORS AND TO TANK TOP AND NOT FRAMED FOR 2' OF LENGTH AT FORE END, OR IN ENGINE SPACE, OR UNDER BULBS. INTERCOSTALS IN ENGINE SPACE 1/4" PLATED. INTERCOSTAL JOINT ANGLES 1/2" OF 3/4 L AT FORE END 3 1/2" x 4 1/2". INTERCOSTAL JOINT ANGLES ENGINE SPACE DOUBLE UNDER ENGINE SEAT. INTERCOSTAL SHELL ANGLES 3/4" x 4 1/2" x 36 B.A. 3/4" PLATE TO SHELL. INTERCOSTAL VERTICALS FOR 3/4 L AT FORE END 3 1/2" x 4 1/2". INTERCOSTAL VERTICALS ENGINE SPACE 3 1/2" x 4 1/2".

JOGGING. SIDE FRAMES TO BE JOGGED. FRAMES & KEY FRAMES IN DOUBLE BOTTOM TO BE JOGGED. UPPER DECK PLATING TO BE JOGGED. 2nd 3rd

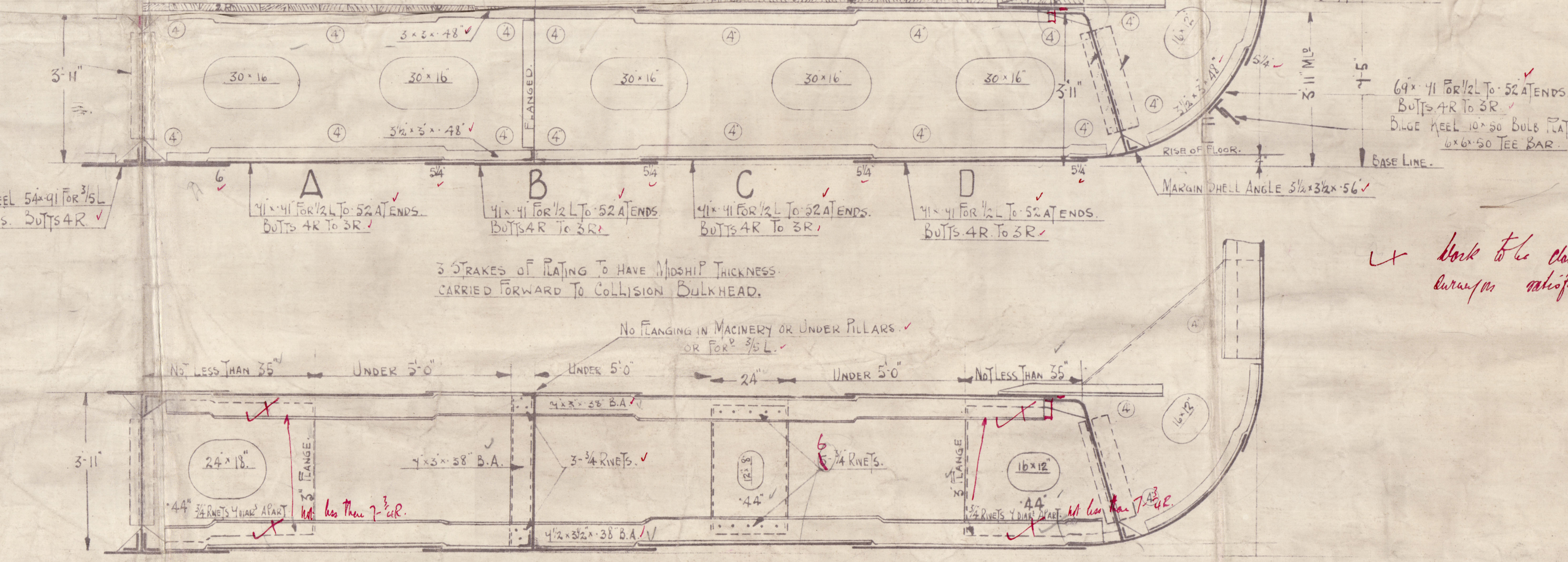
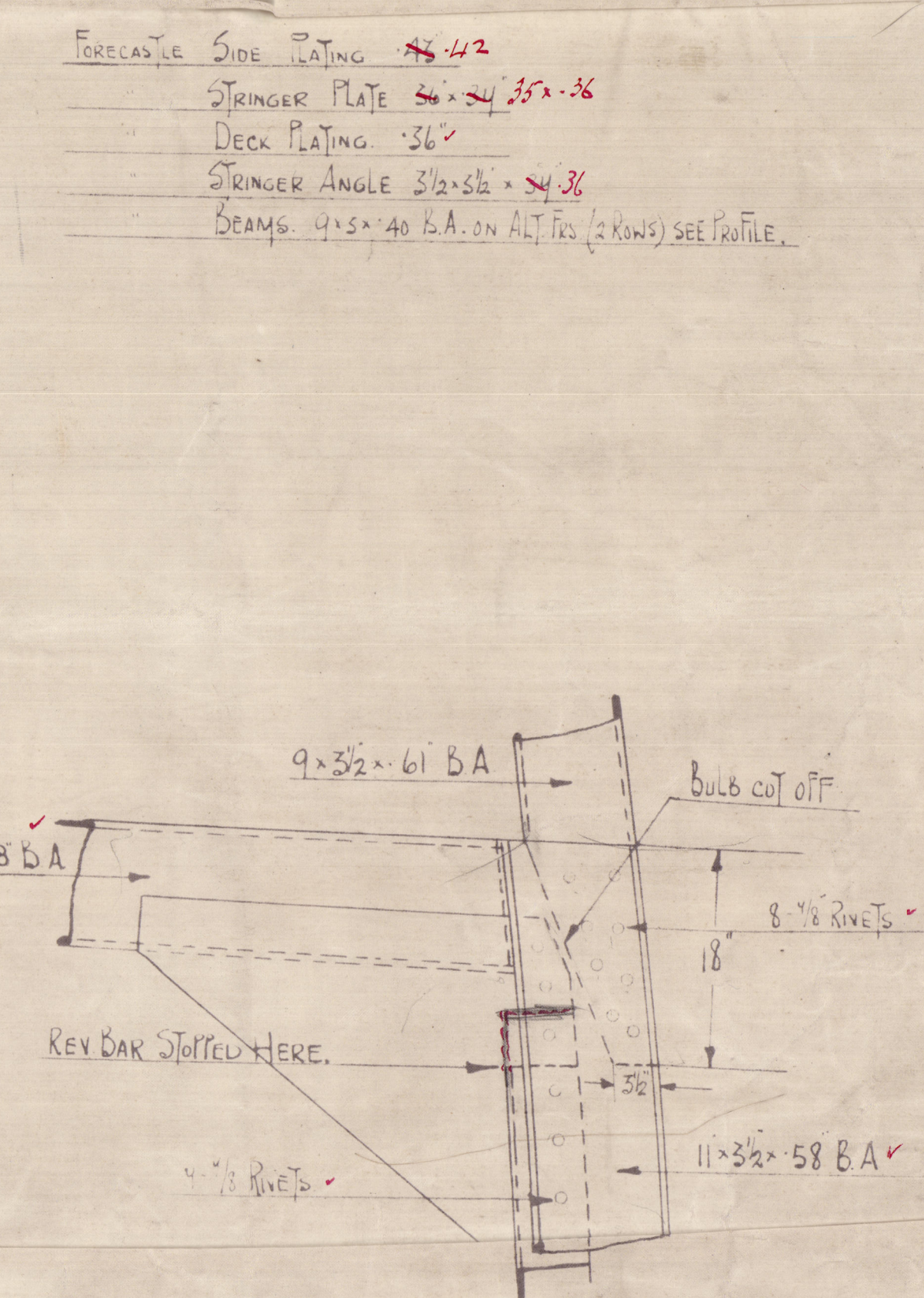
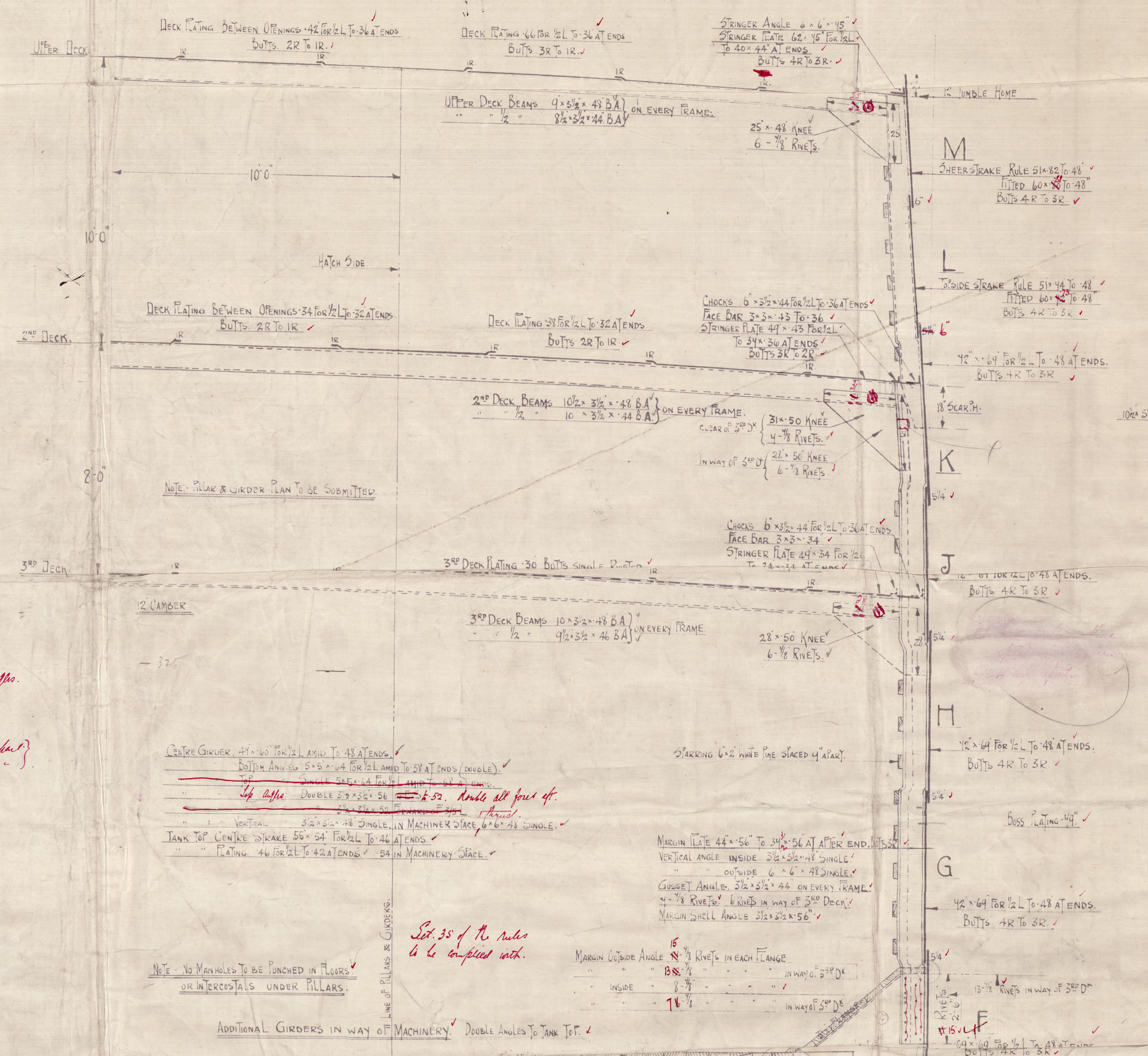
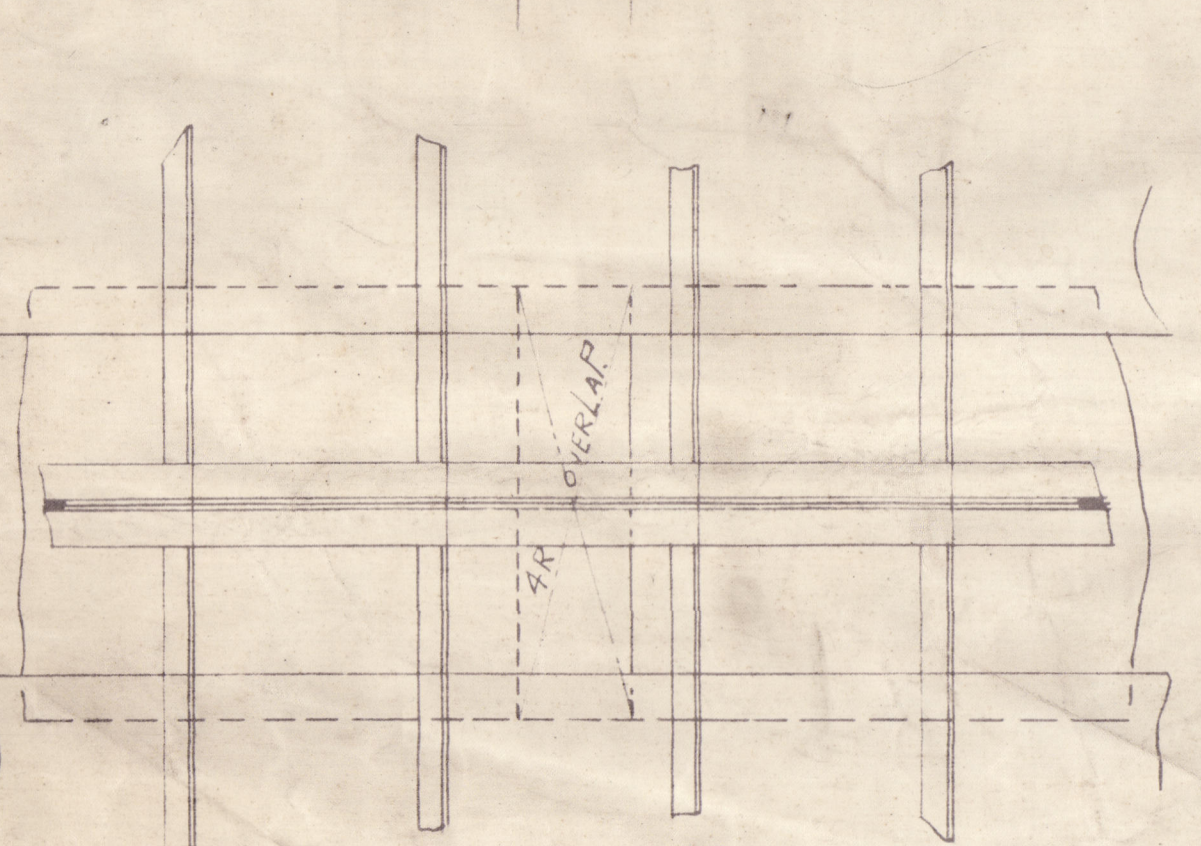
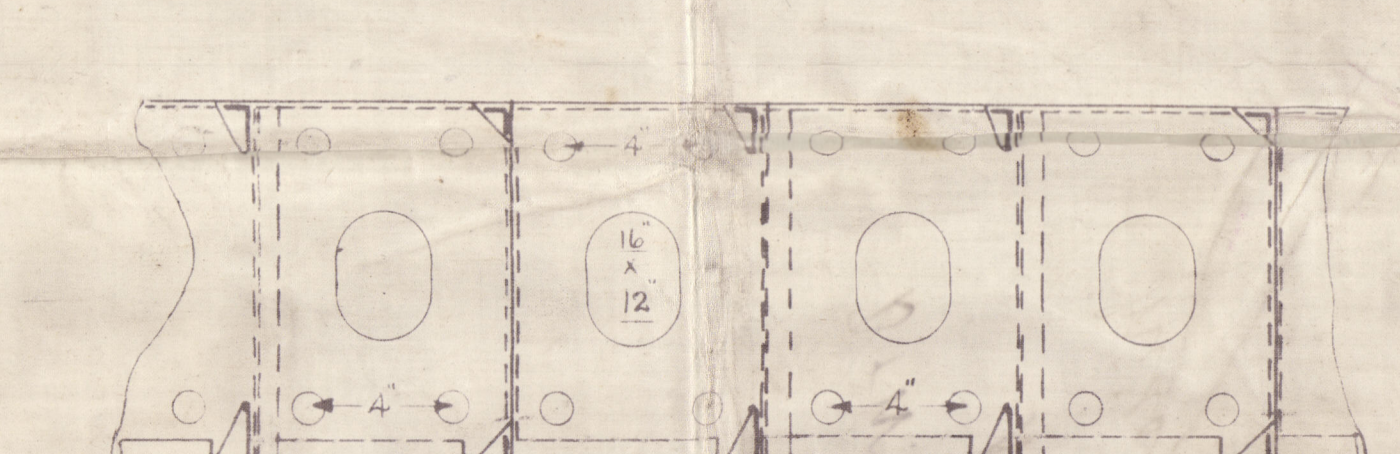
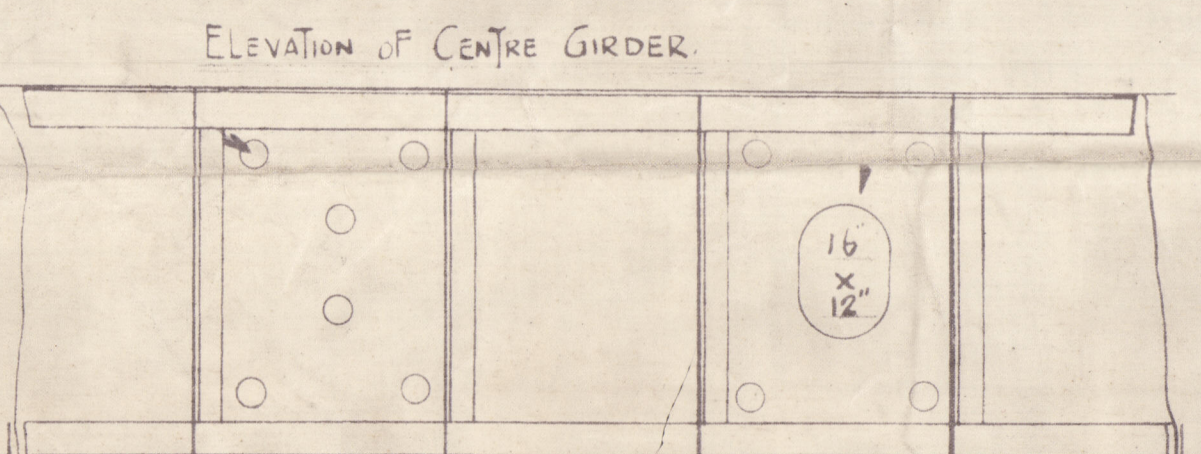
RIVET SPACING TABLE

CENTRE GIRDER TOP ANGLES	1/2" RIVETS SPACED 4 DIAM APART WHERE W.T. <i>NON W.T. 3/4"</i>
BOTTOM	1/2" TO FEEL SPACED 5 DIAM APART ALL FOR & AFT. WHERE W.T. 3/4" ROWS REELED. WHERE W.T. 3/4" ROWS REELED.
VERTICAL	1/2" RIVETS IN 3/4" ANGLE 1/2" RIVETS REELED IN 1/2" ANGLE.
SIDE GIRDER	1/2" WHERE FITTED 3/4" RIVETS SPACED 4 DIAM APART (5 RIVETS PER 24" FRAME SPACE). 1/2" & BOTTOM ANGLES 1/2" RIVETS TO SHELL 1/2" RIVETS TO FLOOR TANK TOP (6 RIVETS PER 24" FRAME SPACE).
TANK FRAMES	3/4" RIVETS TO FLOOR SPACED 4 DIAM APART, 42 DIAM AT W.T. DIVISIONS. FORWARD OF 3/4 L 1/2" TO SHELL 1/2" IN WAY OF 30" SPACING FORWARD OF 3/4 L.
REV FRS TO FRAMES	1/2" RIVETS SPACED 4 DIAM APART.
MARGIN VERTICAL ANGLES	OUTSIDE ANGLES 1/2" RIVETS IN EACH FLANGE. INSIDE 1/2" RIVETS IN EACH FLANGE.
SHELL ANGLE	1/2" RIVETS SPACED 4 DIAM APART.
GUSSET ANGLE	1/2" RIVETS TO FLOOR TAIL AND TANK TOP 1/2" RIVETS IN WAY OF 30" DECK. SPACED 4 DIAM APART AT 32" SPACING.
SIDE FRAMES TO SHELL	WHERE OVER 50 & NOT EXCEEDING 1/2" 1/2" RIVETS ABOVE 1/2" RIVETS. 1/2" AT 24" IN TANKS & IN DEEP TANK.
REV FRS TO FRAMES	1/2" RIVETS SPACED 4 DIAM APART.
IN AFTER PEAK RIVETS TO FRAMES, FLOORS & CROSS TIES	1/2" SPACED 5 DIAM APART.
TANK TOP PLATING	OUTS & EDGES 1/2" RIVETS SPACED 4 DIAM APART.
DECK PLATING TO BEAMS	3/4" x 1/2" RIVETS SPACED 4 DIAM APART.
DECK STRINGER & DECK PLATING LANDINGS	6-1 RIVETS, 1/2" RIVETS 1/2" RIVETS IN EACH 30" SPACE EXCLUDING RIVETS 5-1/2" 8-1/2" 4" IN BEAMS.
BUTTS	1/2" x 1/2" RIVETS SPACED 3/4" DIAM APART.
PLATING BUTTS	1/2" x 1/2" RIVETS SPACED 4 DIAM APART.
UTTER DECK STRINGER ANGLE	1/2" x 1/2" RIVETS SPACED 4 DIAM REELED 2 ROWS WHERE 1 1/2" (1 1/2" RIVETS) 2 rows plus 5 rows plus 1 1/2" RIVETS.
2nd & 3rd DECK STRINGER ANGLES	1/2" RIVETS.
SHELL CHUCKS	1/2" x 1/2" 6 RIVETS PER 24" SPACE 5 RIVETS PER 24" SPACE 4 RIVETS PER 24" SPACE.
BULKHEAD PLATING	3/4" RIVETS SPACED 4 DIAM APART IN BUTTS & LANDINGS.
CROSS TIES	3/4" RIVETS SPACED 4 DIAM APART IN DEEP TANK & PEAKS.
FRAMES 1/2" RIVETS TO SHELL SPACED 4 DIAM APART REELED 2 ROWS.	
ATTACHMENT TO TANK TOP	1/2" RIVETS SPACED 4 DIAM APART REELED 2 ROWS.
TO DECK 3/4" RIVETS SPACED 4 DIAM APART.	
SHELL RIVETING WHERE PLATING IS OVER 1/2" BUTTS TO HAVE 1/2" RIVETS.	
1/2" 50 OR UNDER BUTTS TO HAVE 3/4" RIVETS.	
RIVETS IN SHELL BUTTS SPACED 3/4" DIAM APART WHERE 3/4" RIVETS.	
LANDINGS AS SHOWN ON RIVETING TABLE OPPOSITE.	
BULGE REEL 1/2" RIVETS SPACED 5 DIAM APART IN THE BAR TO SHELL.	
1/2" RIVETS SPACED 4 DIAM APART.	
TEE BAR TO BULBS PLATE.	

RIVETING TABLE. SHELLS. BUTTS OVERLAPPED & 4R FOR & AFT. STRAINERS A.T.H. BUTTS OVERLAPPED & 4R WHERE OVER 1/2", REMAINDER 3R. 1/2" x 1/2" SHELL LANDINGS DOUBLE RIVETED FOR & AFT. DECK STRINGER PLATING. UTTER DECK STRINGER: BUTTS OVERLAPPED & 4R WHERE OVER 1/2", REMAINDER 3R. SECOND DECK: 3R & 3R WHERE OVER 1/2", REMAINDER 2R. THIRD DECK: 3R & 2R THROUGHOUT. DECK PLATING. UTTER DECK PLATING: BUTTS OVERLAPPED & 3R ABOVE OPENINGS WHERE ABOVE 5/4" & 2R WHERE 5/4" OR UNDER & 2R BETWEEN OPENINGS FOR 1/2" TO 1/2" REMAINDER 1R. SECOND DECK PLATING: BUTTS OVERLAPPED & 2R FOR 1/2" REMAINDER 1R. THIRD DECK: 1R THROUGHOUT. ALL DECK LANDINGS SINGLE RIVETED FOR & AFT. DOUBLE BOTTOM TANK. TANK TOP CENTRE STRAKE: BUTTS OVERLAPPED & 3R THROUGHOUT. TANK TOP PLATING: 3R WHERE OVER 1/2", REMAINDER 1R. TANK TOP MARGIN PLATE: 3R FOR & AFT. CENTRE GIRDER PLATE: 3R & 3R & 1/2". RIVETS IN SHELL BUTTS. IN BUTTS OF SHELL PLATE RIVETS TO BE 1/2" DIAM FOR & AFT. SHELL: 1/2" WHERE OVER 50 & WHERE 50 & UNDER TO BE 3/4" DIAM. SHEERS STRAKE: 1/2" WHERE OVER 1/2" & WHERE OVER 50 TO BE 3/4" DIAM 3/4" DIAM ELSEWHERE. RIVETS IN SHELL LANDINGS. KEEL LANDING: 6-1 RIVETS PER 24" FRAME SPACE. SHELL LANDINGS: 6-1 RIVETS PER 24" FRAME SPACE. 5/4" 8-1/2" 1/2" FER 32" WHERE ABOVE 1/2" EXCLUDING RIVETS IN FRAMES. 5/4" 8-1/2" 1/2" FER 30" 50 & UNDER 1/2". 5/4" 8-1/2" 1/2" FER 24" 50 & UNDER 1/2". 5/4" 8-1/2" 1/2" FER 24" WHERE 50 & UNDER. RIVETS THROUGH FRAMES & REVERSE FRAMES SPACED 6 DIAM APART AT 32" SPACING. 3/4" SHELL SPACED 6 DIAM APART AT 32" SPACING. IN DEEP TANK & PEAK TANKS SPACED 5 1/2" DIAM APART. 3/4" FOR 3/4 L 5 1/2" DIAM APART.

STEERN FRAME 11' 5 1/2" STEEL CASTING. STEERN 10' 2 1/2" ROLLED STEEL. RUDDER AS PER RULE. BULKHEADS AS PER PROFILE. RIVETS TO BE OF IRON.

6-7 DIAM HOLES WHERE NON W.T. MANHOLES OUTSIDE OF 3/4" L.



APPROVED LLOYDS REGISTER SHIPPING. *Signature* 14. 1. 23.



D + W. Henderson

Nº 658 M.

Midship Section

---

GLASSGOW REPORT No.

44142

" Asuka Maru "

005840-005848-0008



© 2021

Lloyd's Register  
Foundation