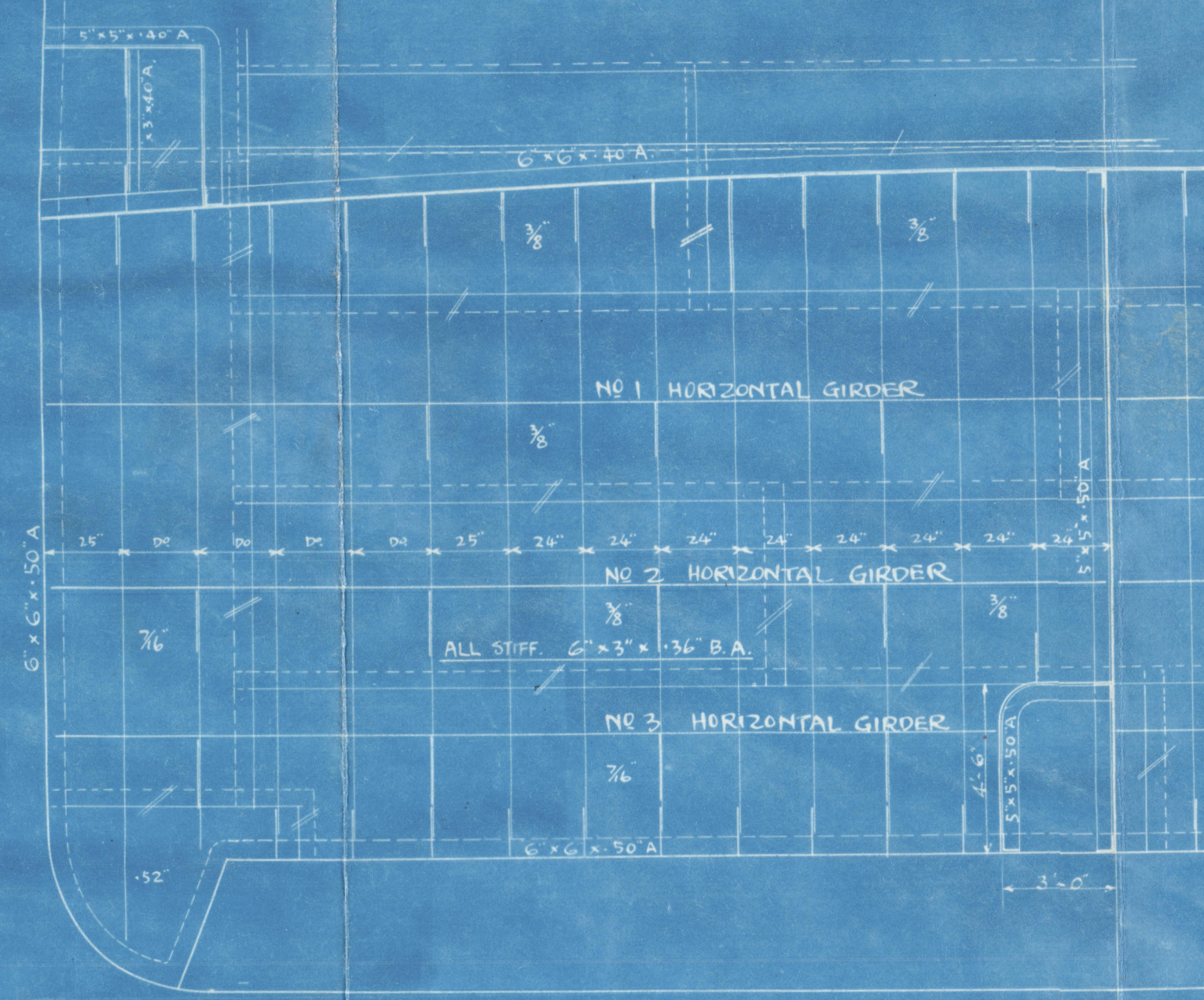


"ASUKA MARU." ADDITIONAL O.T. BULKHEADS.

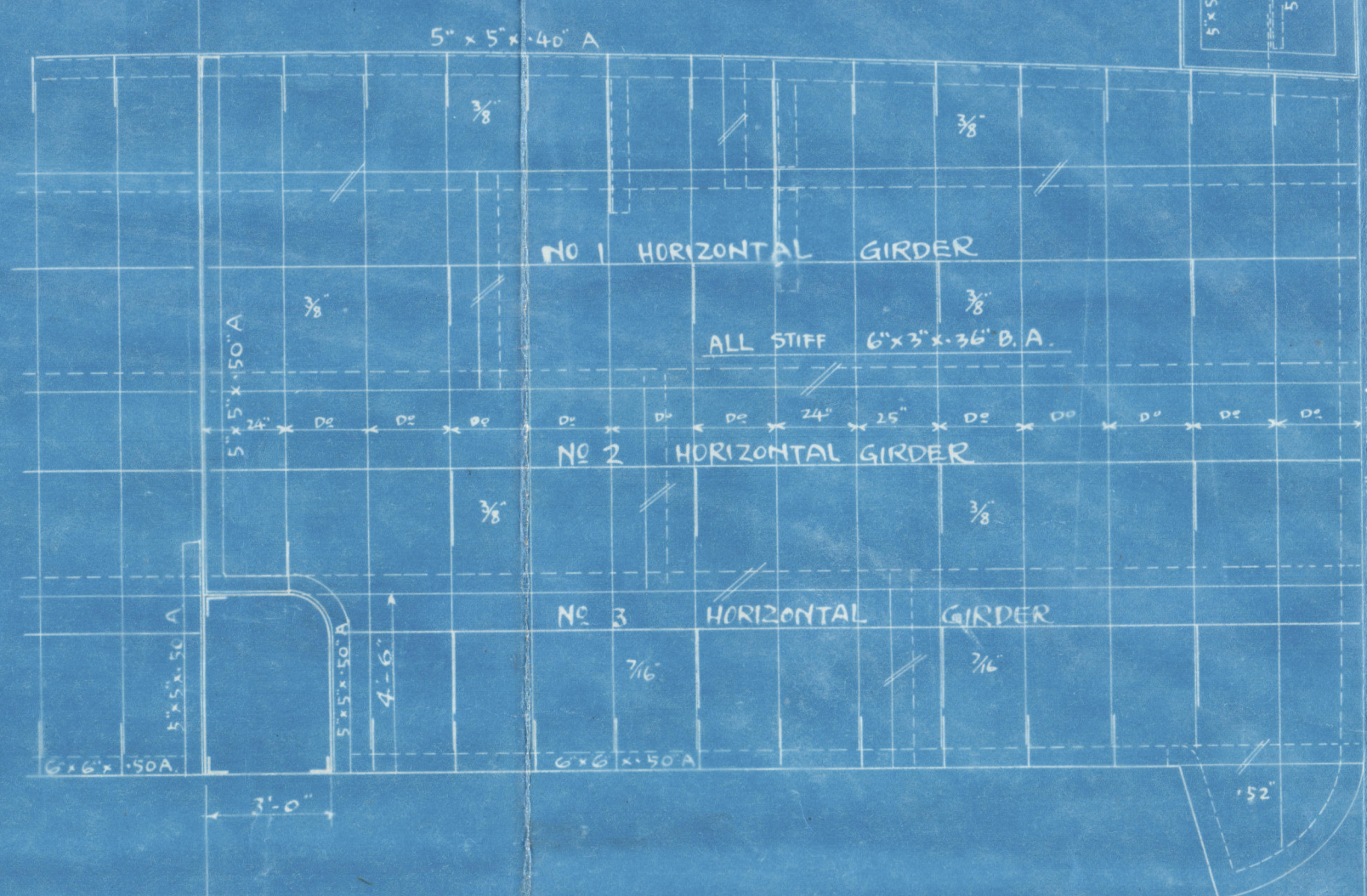
SCALE 1/4" TO ONE FT.

O.T. BULKHEAD AT FR. 104
LOOKING FORWARD.

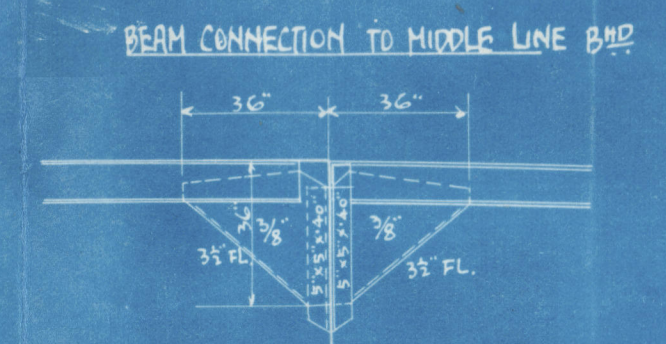
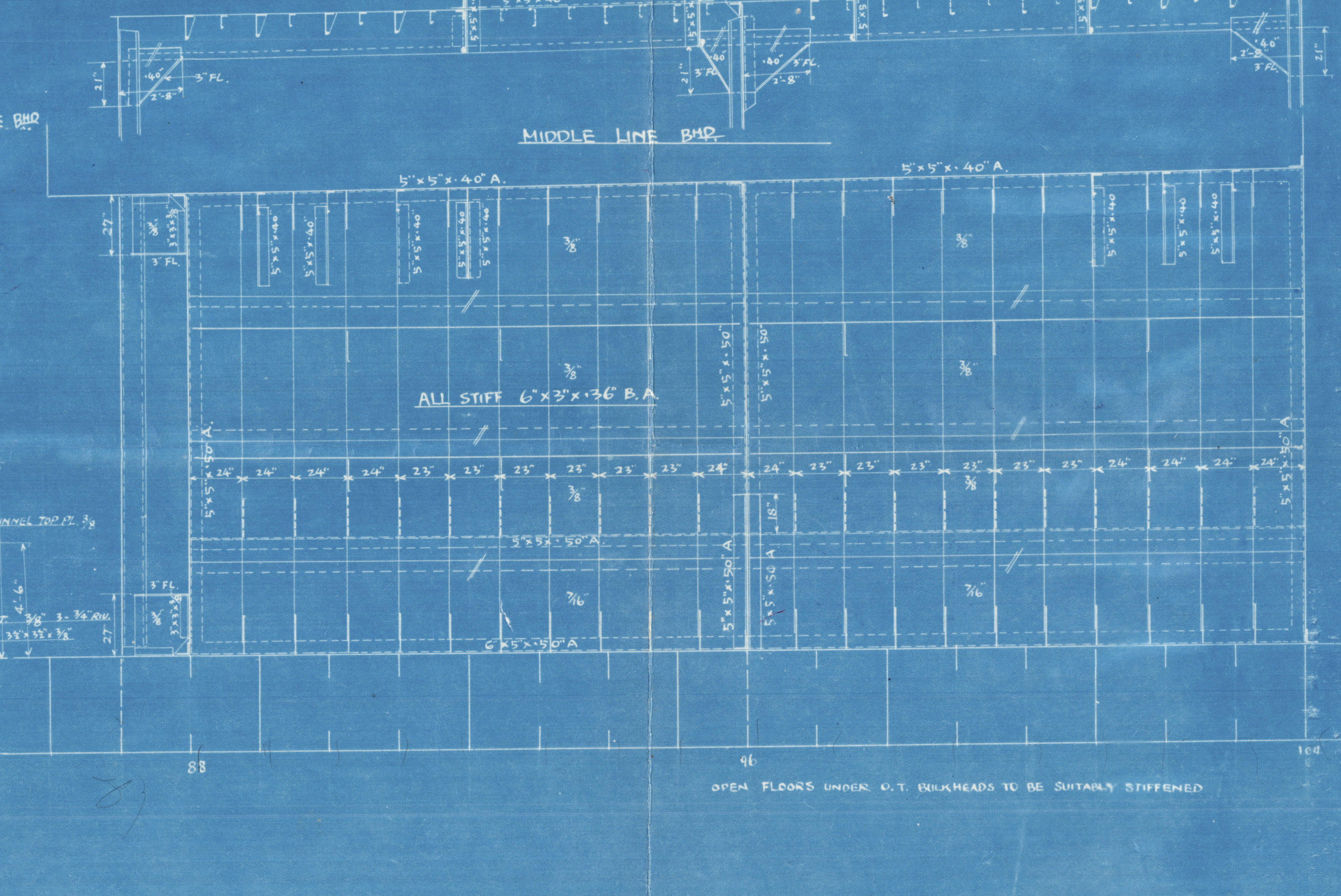
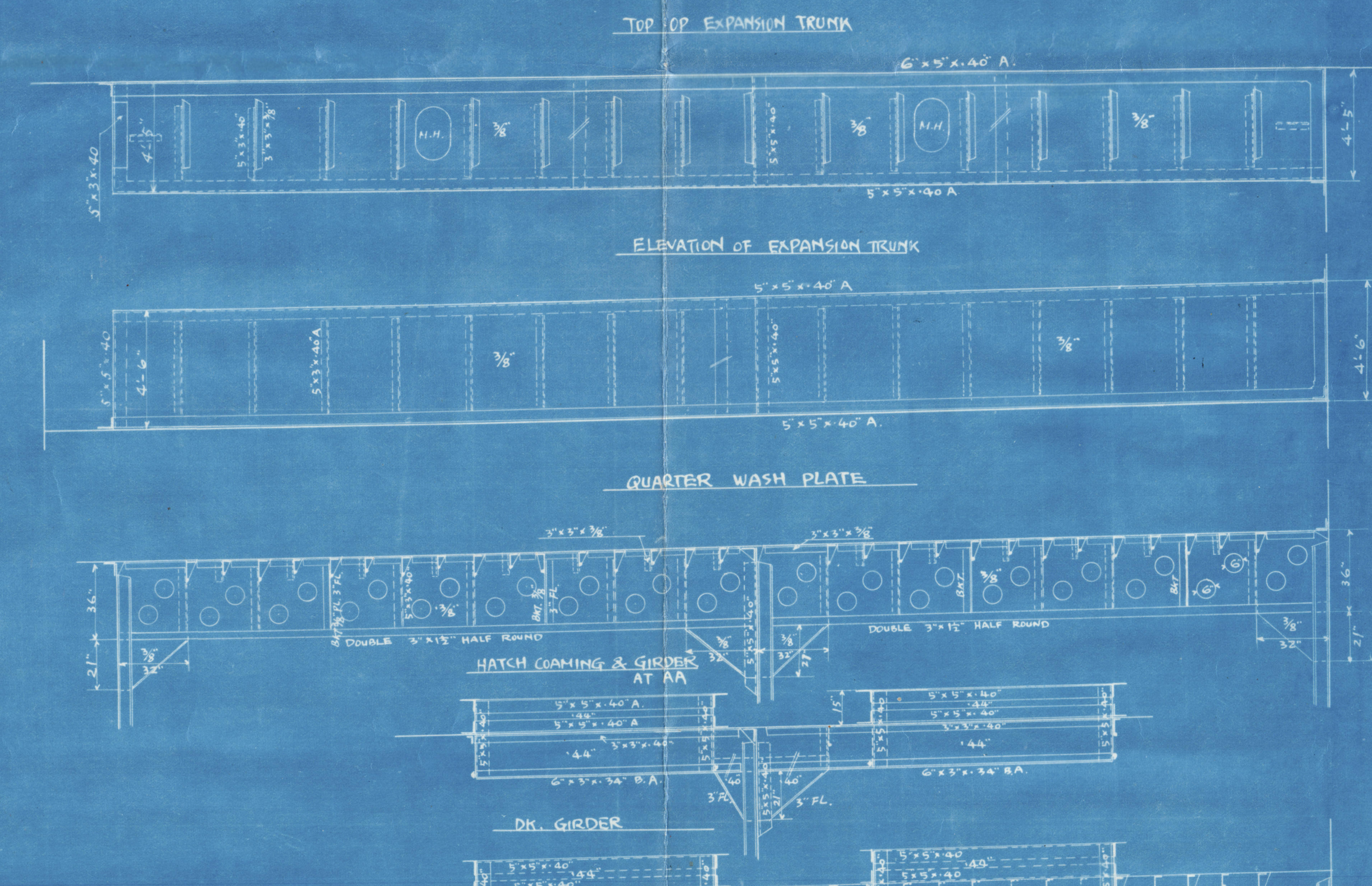
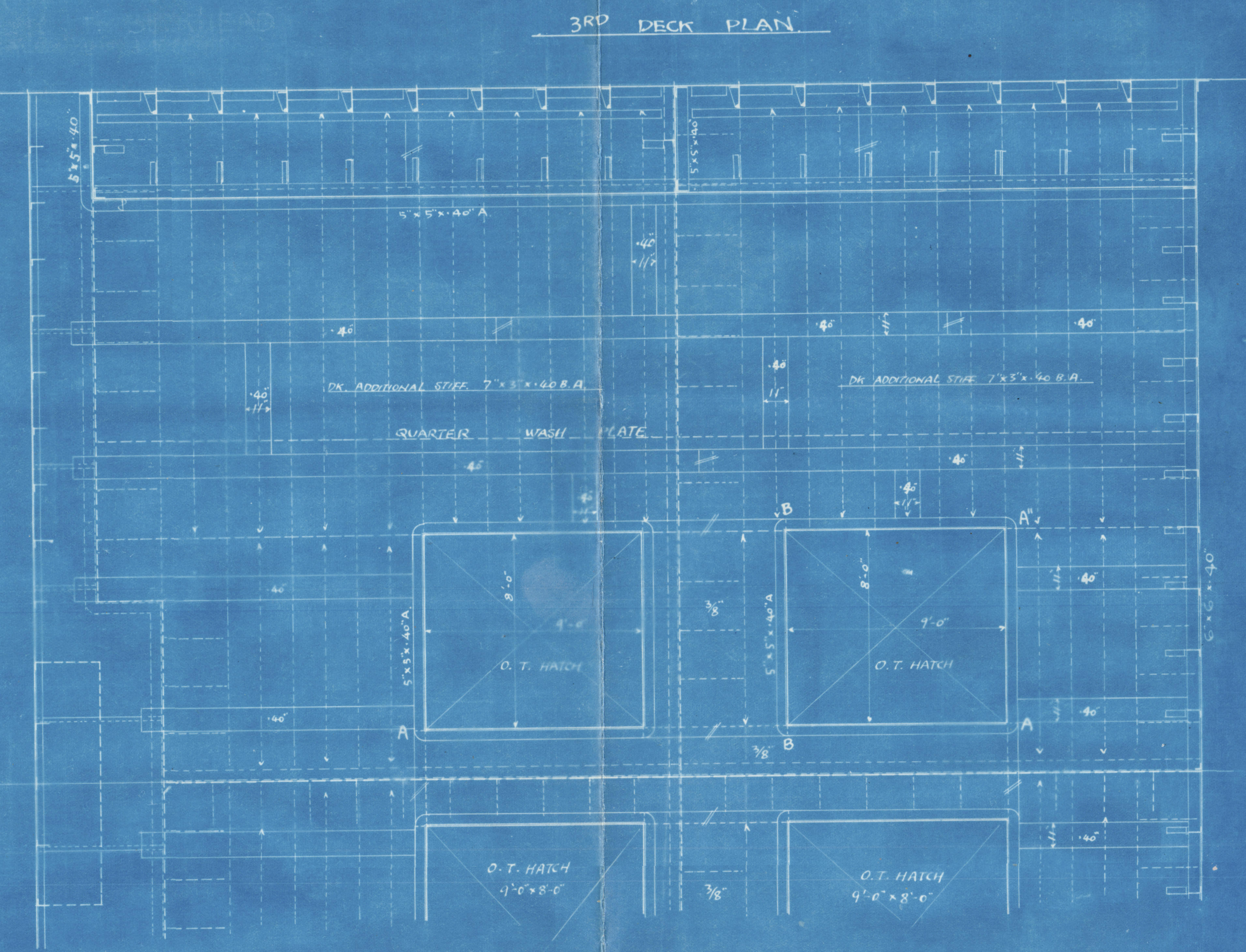
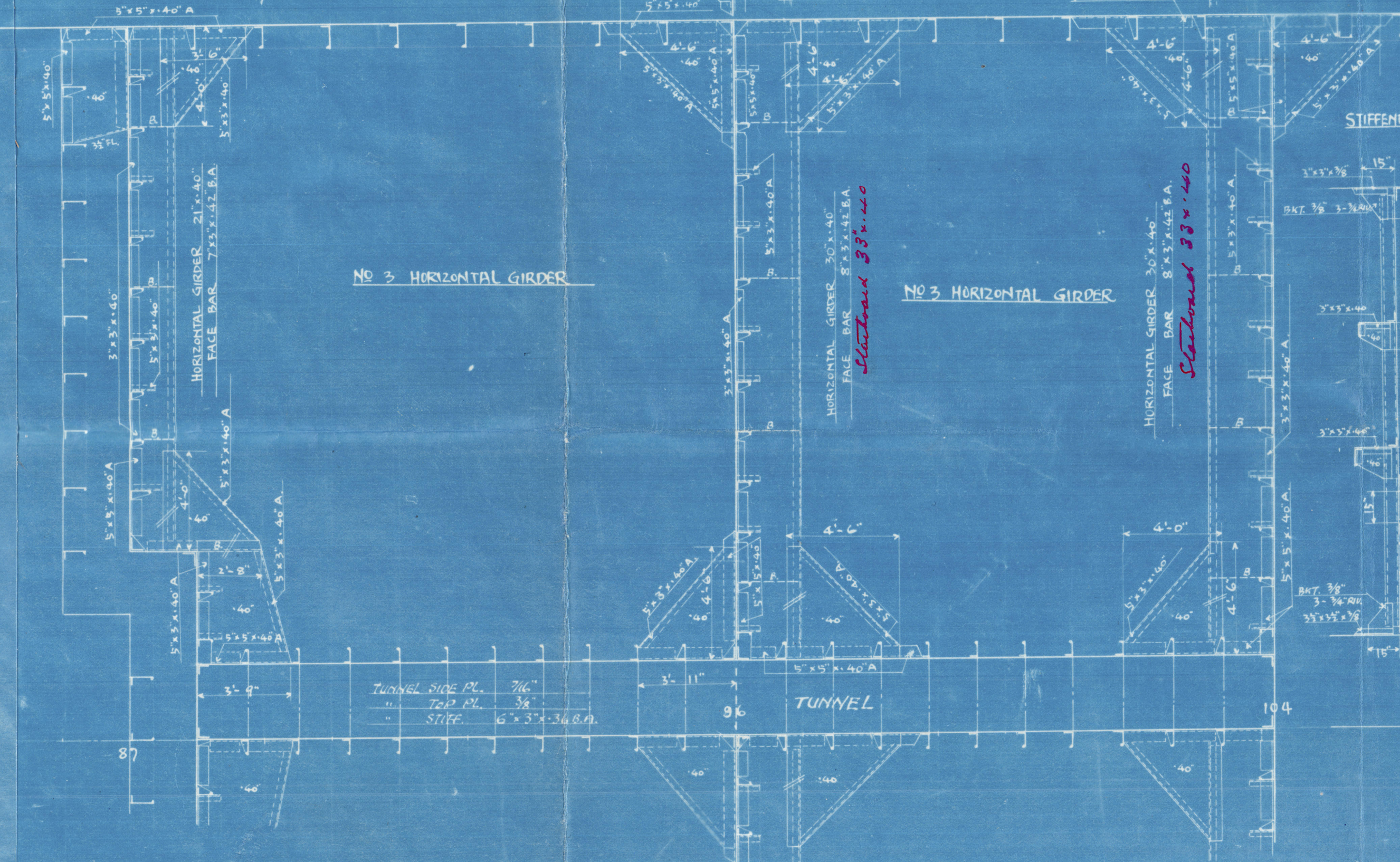
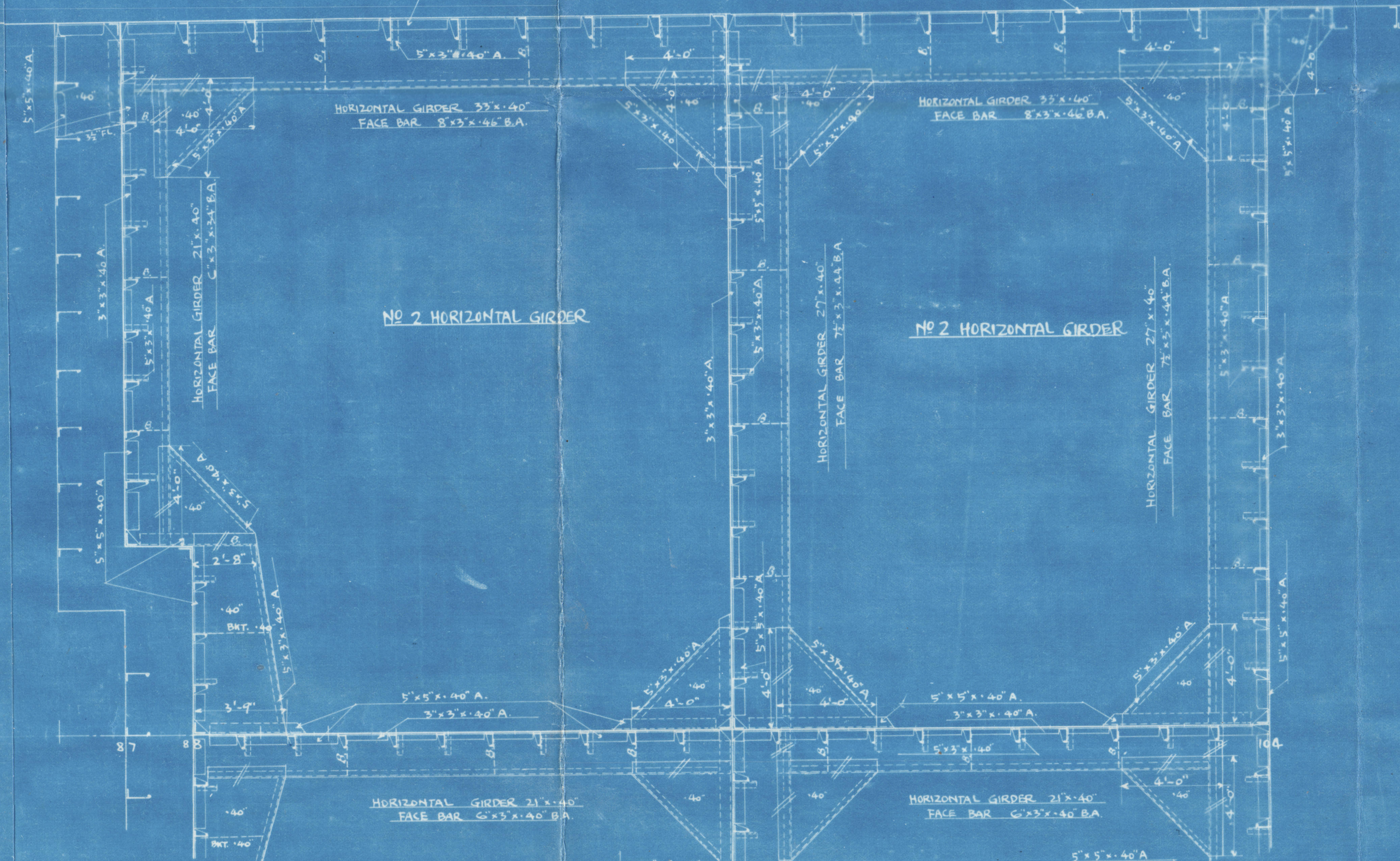
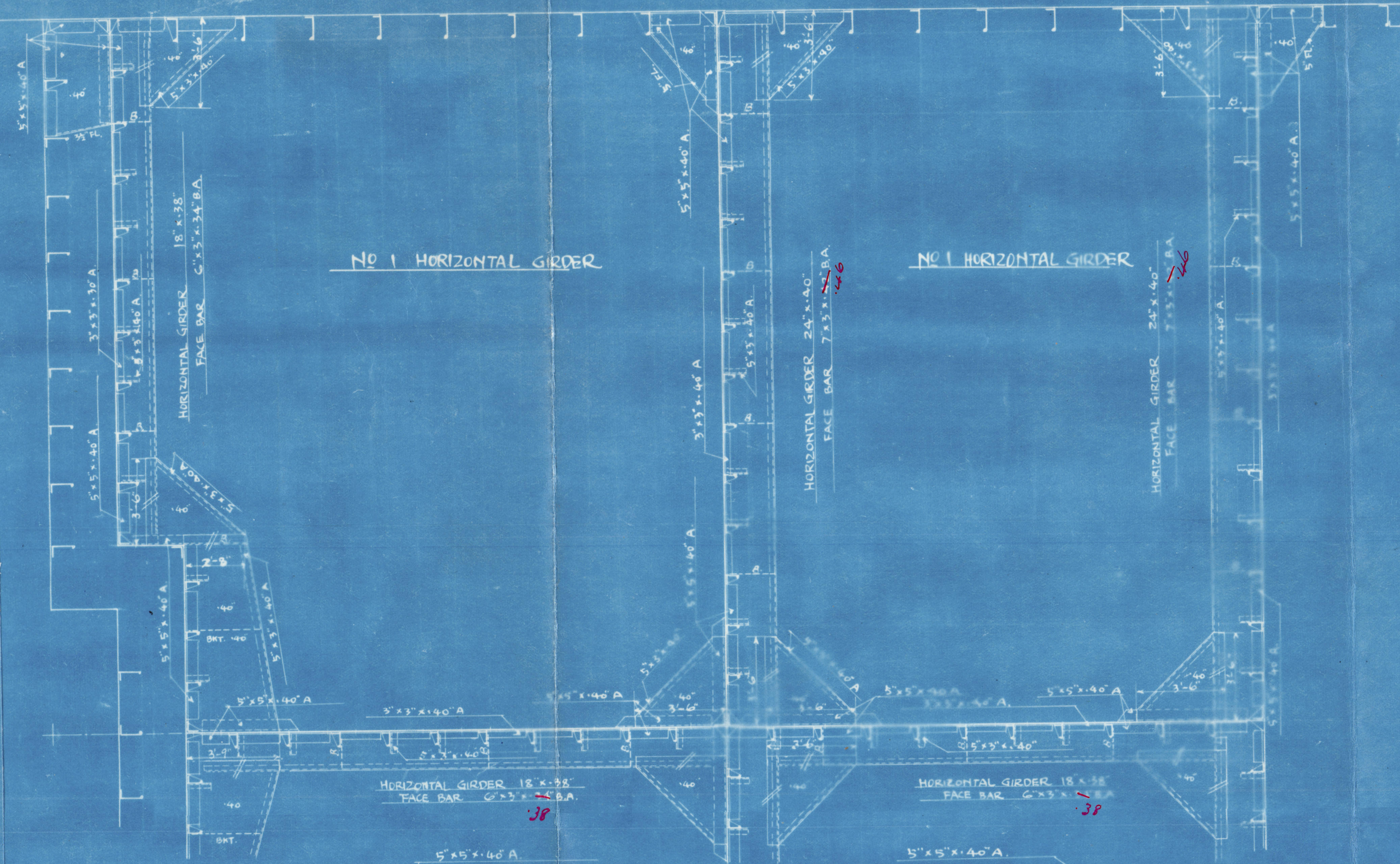
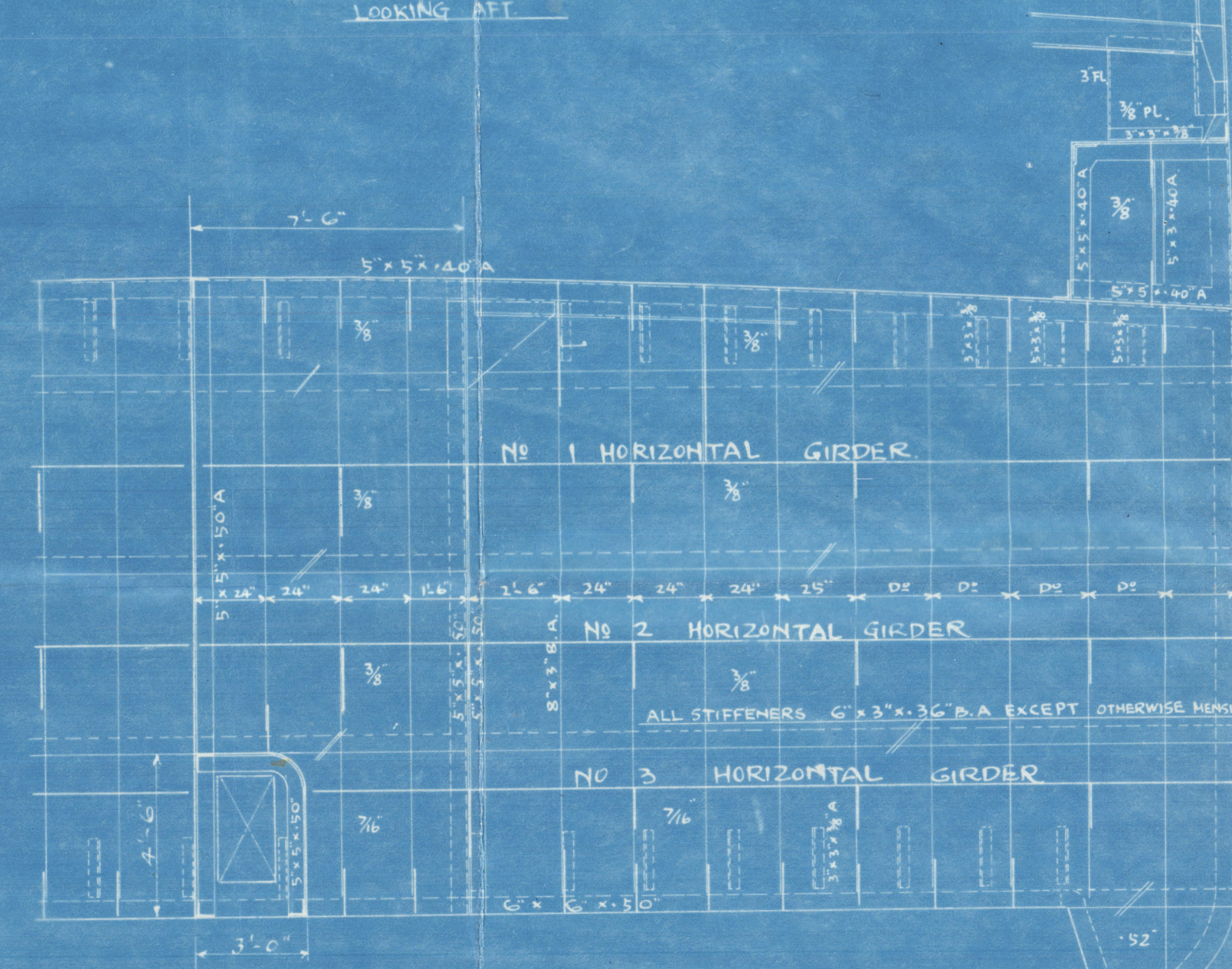


O.T. BULKHEAD AT FR. 96
LOOKING AFT.

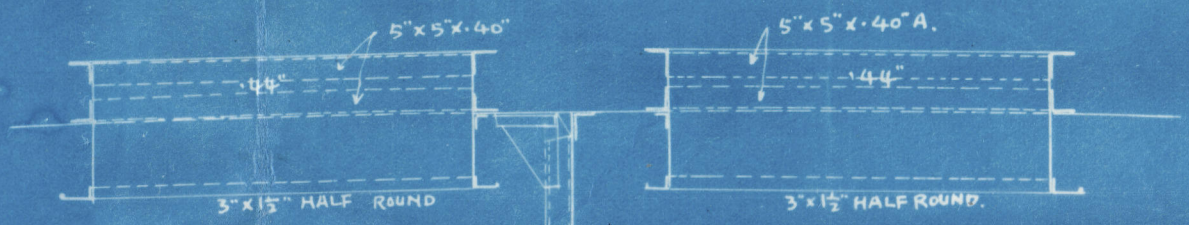
N.B. OVER FLOOR PLATE AND BULKHEAD 16'-0" ABOVE TOP OF EXP. TRUNK



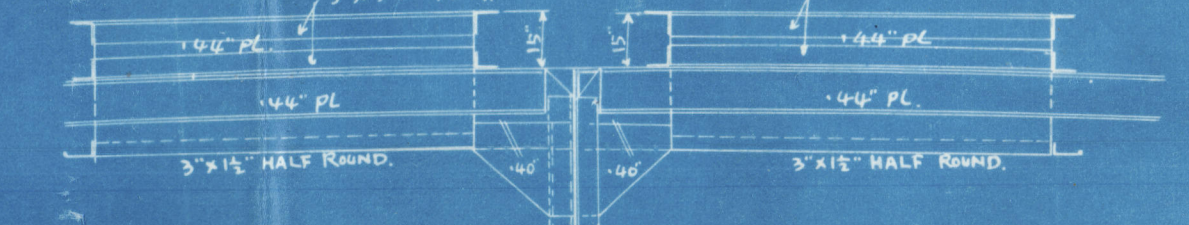
O.T. BULKHEAD AT FR. 87.88
LOOKING AFT.



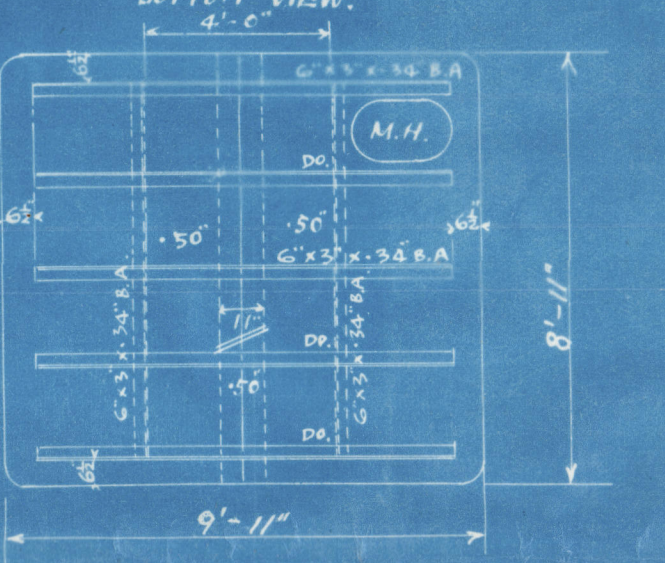
HATCH END COAMING AT BB.



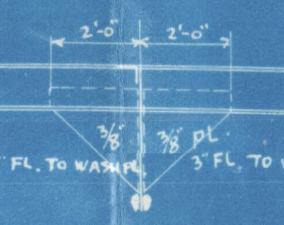
HATCH END COAMING AT AA.



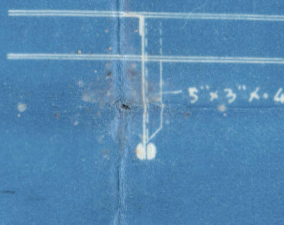
HATCH COVER
BOTTOM VIEW.



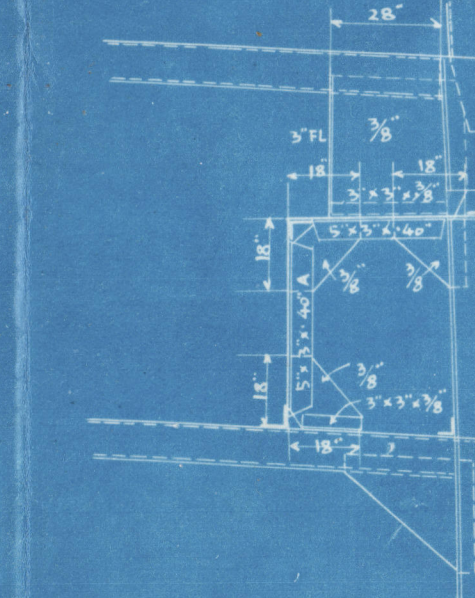
WASH PL. BKT.



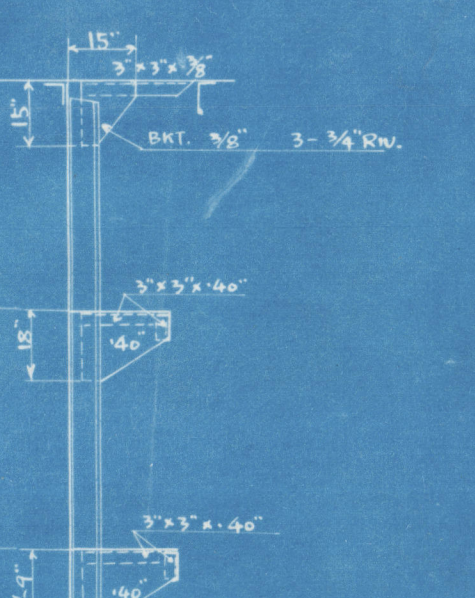
WASH PL. LUG.



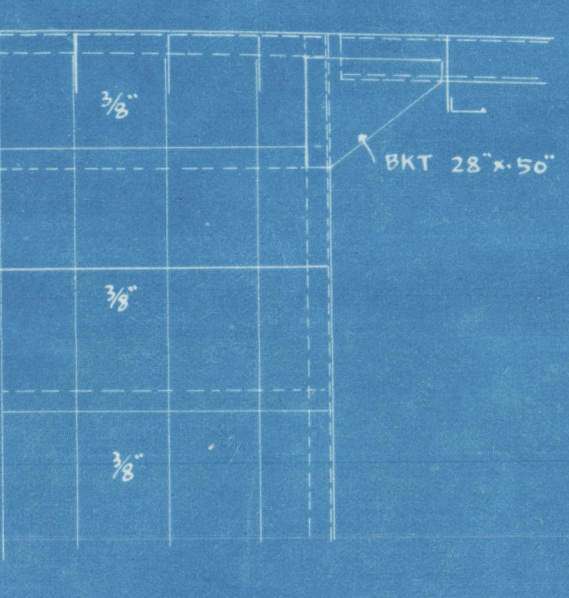
SECTION OF EXP. TRUNK.



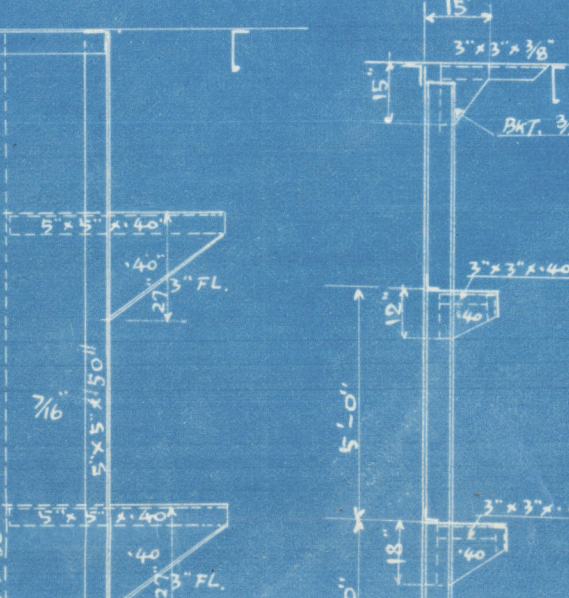
STIFF. AT FR. 96.8104 B&B.



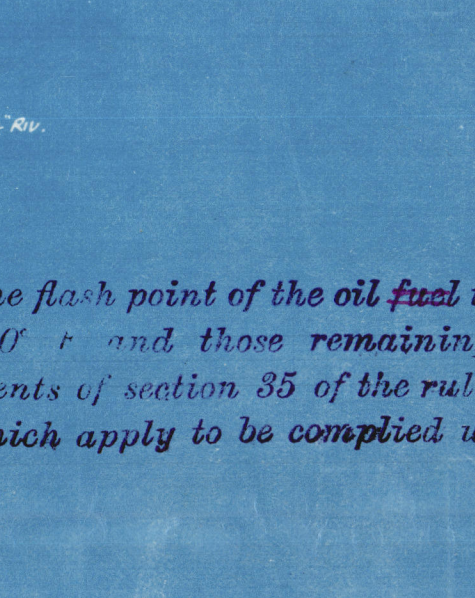
BEAM CONNECTION TO B&B AT FR. 86.



STEP OF B&B AT FR. 87-88.



STIFF. AT FR. 87-88 B&B.



The flash point of the oil fuel to be above 150° F. and those remaining provisions of section 35 of the rules which apply to be complied with.

