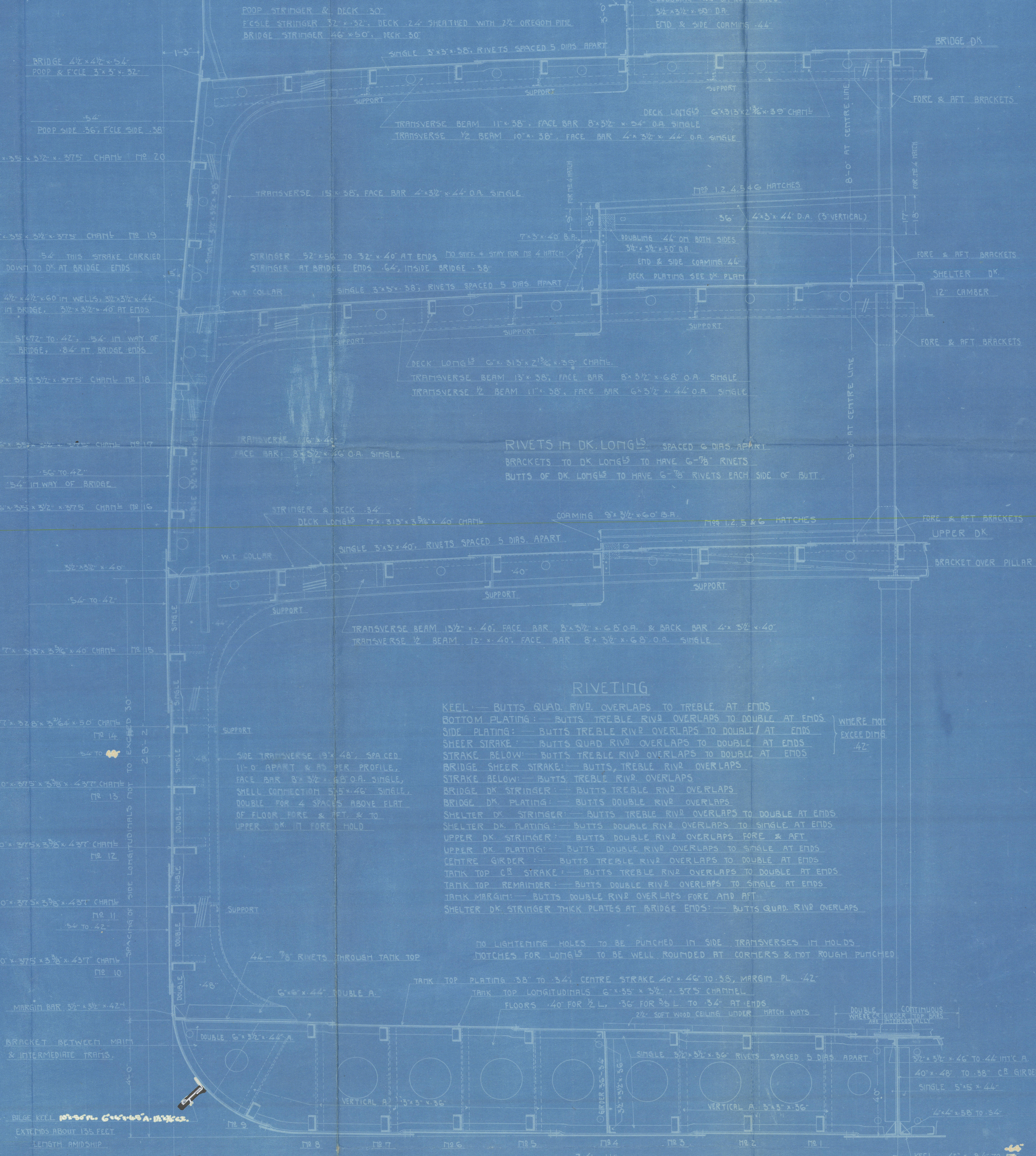
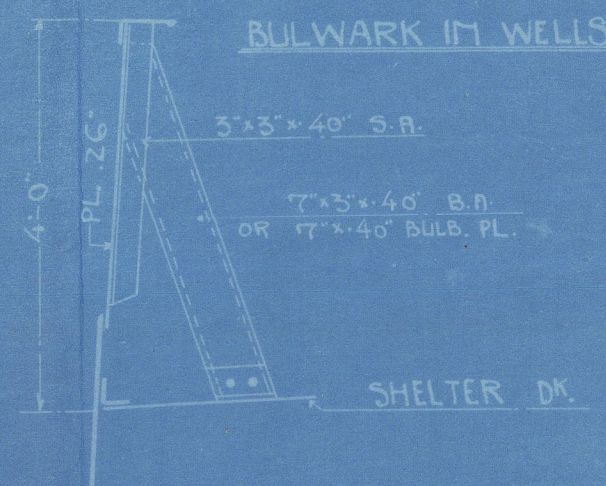


S.S. YESAKI MARU

TO CLASS + 100 A.I. LLOYD'S
ISHERWOOD SYSTEM (PATENT)

MIDSHIP SECTION
SCALE 1/2 IN. TO ONE FT.

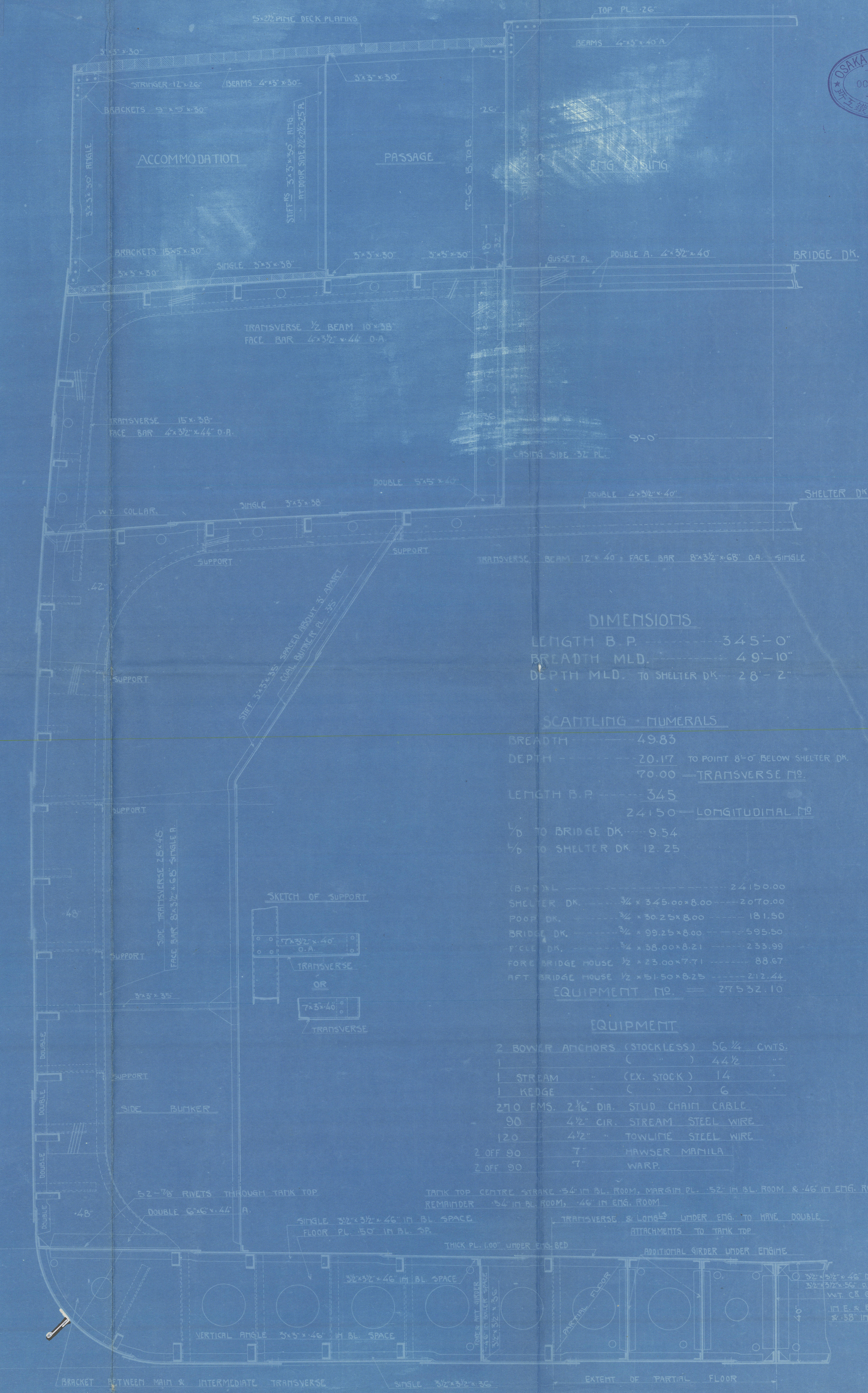


NO. OF RIVETS EACH SIDE OF BUTT 7/8 DIA.	NO. OF RIVETS IN BRACKETS TO BULWARKS 7/8 DIA.
20 RIVETS SPACED 6 DIAS. APART	5
15	5
14	5
13	5
12	5
11	5
10	5
9	5
8	5
7	5
6	5
5	5
4	5
3	5
2	5
1	5

RIVETING

KEEL: BUTTS QUAD RIV. OVERLAPS TO TREBLE AT ENDS
 BOTTOM PLATING: BUTTS TREBLE RIV. OVERLAPS TO DOUBLE AT ENDS
 SIDE PLATING: BUTTS TREBLE RIV. OVERLAPS TO DOUBLE AT ENDS
 SHEER STRAKE: BUTTS QUAD RIV. OVERLAPS TO DOUBLE AT ENDS
 STRAKE BELOW: BUTTS TREBLE RIV. OVERLAPS TO DOUBLE AT ENDS
 BRIDGE SHEER STRAKE: BUTTS TREBLE RIV. OVERLAPS TO DOUBLE AT ENDS
 STRAKE BELOW: BUTTS TREBLE RIV. OVERLAPS TO DOUBLE AT ENDS
 BRIDGE DK. STRINGER: BUTTS TREBLE RIV. OVERLAPS TO DOUBLE AT ENDS
 BRIDGE DK. PLATING: BUTTS DOUBLE RIV. OVERLAPS TO DOUBLE AT ENDS
 SHELTER DK. STRINGER: BUTTS TREBLE RIV. OVERLAPS TO DOUBLE AT ENDS
 SHELTER DK. PLATING: BUTTS DOUBLE RIV. OVERLAPS TO DOUBLE AT ENDS
 UPPER DK. STRINGER: BUTTS DOUBLE RIV. OVERLAPS TO DOUBLE AT ENDS
 UPPER DK. PLATING: BUTTS DOUBLE RIV. OVERLAPS TO DOUBLE AT ENDS
 CENTRE GIRDER: BUTTS TREBLE RIV. OVERLAPS TO DOUBLE AT ENDS
 TANK TOP STRAKE: BUTTS TREBLE RIV. OVERLAPS TO DOUBLE AT ENDS
 TANK TOP REMAINDER: BUTTS DOUBLE RIV. OVERLAPS TO DOUBLE AT ENDS
 TANK MARGIN: BUTTS DOUBLE RIV. OVERLAPS TO DOUBLE AT ENDS
 SHELTER DK. STRINGER THICK PLATES AT BRIDGE ENDS: BUTTS QUAD RIV. OVERLAPS

NO LIGHTENING HOLES TO BE PUNCHED IN SIDE TRANSVERSES IN HOLDS
 NOTCHES FOR LONGS TO BE WELL ROUNDED AT CORNERS & NOT ROUGH PUNCHED
 TANK TOP PLATING 38\"/>



DIMENSIONS

LENGTH B.P. 345'-0"
 BREADTH MLD. 49'-10"
 DEPTH MLD. TO SHELTER DK. 26'-2"

SCANTLING - NUMERALS

BREADTH 49.83
 DEPTH 20.17 TO POINT 8'-0" BELOW SHELTER DK.
 70.00 TRANSVERSE NO.
 LENGTH B.P. 345
 241.50 LONGITUDINAL NO.
 9.54 TO BRIDGE DK.
 12.25 TO SHELTER DK.

EQUIPMENT

2 BOILER ANCHORS (STOCKLESS) 56 1/2 CWTs.
 1 () 44 1/2
 1 STREAM (EX. STOCK) 14
 1 KEDGE () 6
 270 FMS. 2 1/2 DIA. STUD CHAIN CABLE
 90 4 1/2 CIR. STREAM STEEL WIRE
 120 4 1/2 TONWIRE STEEL WIRE
 2 OFF 90 7' HAWSER MANILA
 2 OFF 90 7' WARP

PLATE GIRDERS IN BOTTOM
 RIVETS SPACED 7 DIAS. APART

BOTTOM LONGITUDINALS 11' 3" x 3/4" x 40 CHAIN
 BOTTOM PLATING 3/4" TO 1" NOT FURTHER REDUCED
 MIDSHIP THICKNESS MAINTAINED TO COLLISION BUD ON FLAT OF FLOOR

SECTION IN WAY OF ENG. & BL. SPACE

SS "YESAKI MARU"
(Osaka Iron Works Yard No 916)

MIDSHIP SECTION

See Kob. Rpt. No. 2639

005811-005825-0098



© 2021

Lloyd's Register
Foundation