

20.4.09

N^o560 LIGHTSHIP MIDSHIP SECTION



SCALE $\frac{3}{4}$ IN. = 1 FT.
DIMENSIONS 8' 0" B.P. x 22' 0" M¹⁰ x 12' 4" M¹⁰
TO CLASS 100 A1 LLOYDS (STEEL)

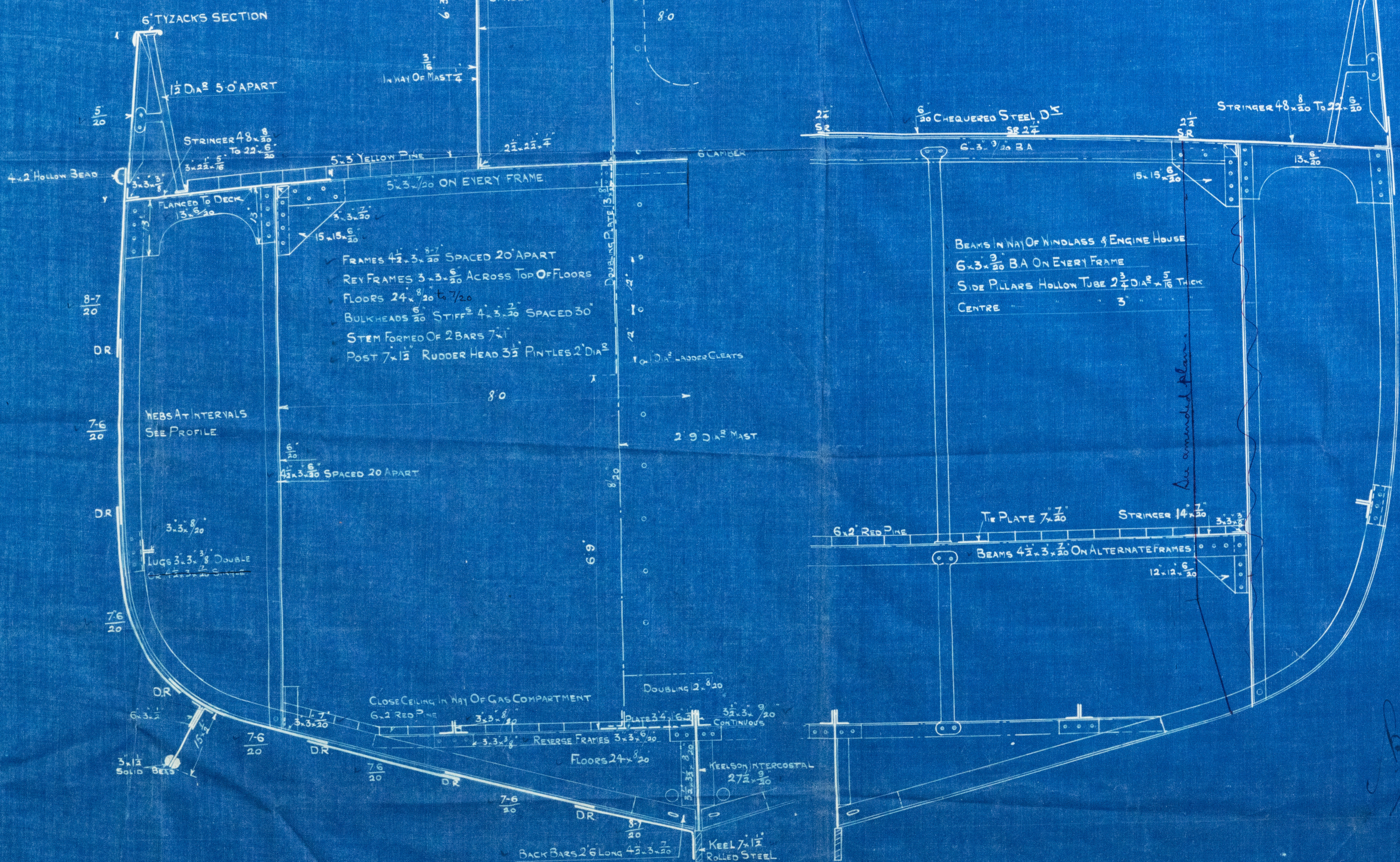
SEE AMENDED COPY

NUMERALS
DEPTH 12' 0"
BREADTH 20' 0"
GIRTH 44' 0"
79' 82" LENGTH
88' 0"
351' 0" 2nd NO
351' 52' 720

$\frac{L}{B} = 3.62$
 $\frac{L}{D} = 6.24$

EQUIPMENT
One BAXTER IMPROVED STOCKLESS ANCHOR 9 CWT.
240 FATHOMS 1 1/2" CABLE
90 FATHOMS 8" COIR TOW ROPE
90 " 6" ROPE
90 " 5 1/2" "
60 " 2 1/2" "
OWNERS SPECIFICATION

RIVETING (IRON RIVETS)
BUTTS OF SHELL PLATING STRAPPED AND
DOUBLE RIV. 5/8" RIVETS 9 1/2" STRAPS 8 STRAPS AT ENDS
DECK STRINGER BUTTS STRAPPED AND
SINGLE RIV. 3/4" DOUBLE STRAPS 5 1/2" 3/4" RIVETS.



HALF MIDSHIP SECTION

SECTION IN WAY OF WINDLASS

LLOYD'S REGISTER
OF SHIPPING
19 APR 1909
LONDON

LR

005744-005749-005750

Earle's S. & E. Co. Ltd.

Nº 560.

Midship Section.



"Bull"

Hull Report No. 21947

Recommended Section



© 2021

Lloyd's Register
Foundation

005774-005790-0247