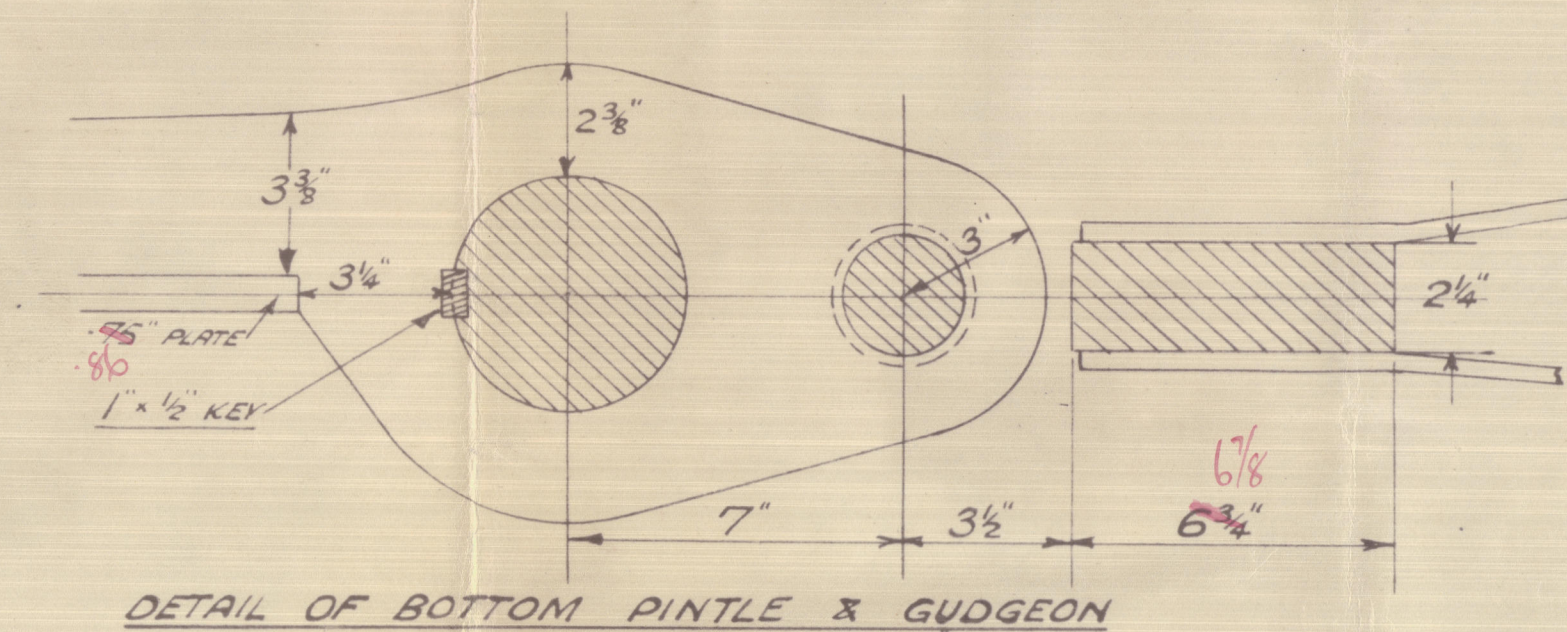
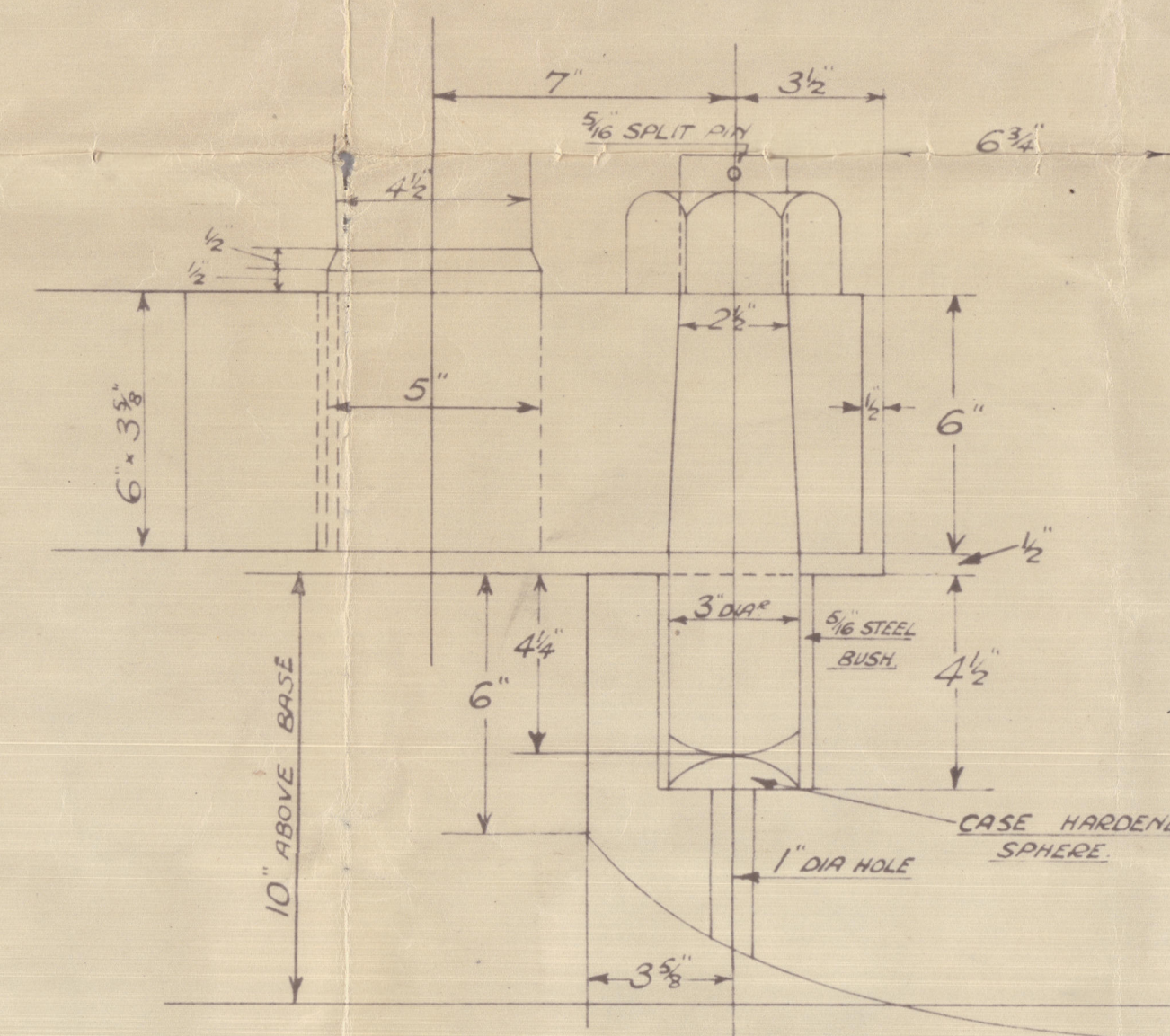


DETAIL OF TOP & INTERMEDIATE PINTLES & GUDGEONS.



DETAIL OF BOTTOM PINTLE & GUDGEON

1ST LONGITUDINAL No = $L \times D = 222 \times 17.5 = 3885$

AREA OF RUDDER = 59.49 SQ. FT.

C.G. OF RUDDER ABAFT CR. LINE OF PINTLES = 2.63 FT

$$\underline{A \cdot D = 59.49 \times 2.63 = 156.459} \quad \text{SPEED OF VESSEL} = 9 \text{ KNOTS}$$

STERN POST OF FORGED IRON.

RUDDER FRAME OF FORGED IRON IN TWO PIECES WITH

COUPLING. TO HAVE ARMS SHRUNK ON AND KEYED TO STOCK

RIVETING— HOLES IN STERNPOST. ABOVE COUNTER TO SUIT $\frac{3}{4}$ " DIA. RIVETS SPACED $3\frac{3}{4}$ " APART.

HOLES IN STERNPOST BELOW COUNTER TO SUIT 1" DIA. RIVETS SPACED 5" APART

HOLES IN RUDDER ARMS TO SUIT $1\frac{1}{8}$ " DIA RIVETS SPACED 5" APART AND C/SK AS REQ.

TO LLOYDS LATEST REVISED RULES TO CLASS "LLOYDS 100 A 1. + HOPPER DREDGER.

Nº 279.

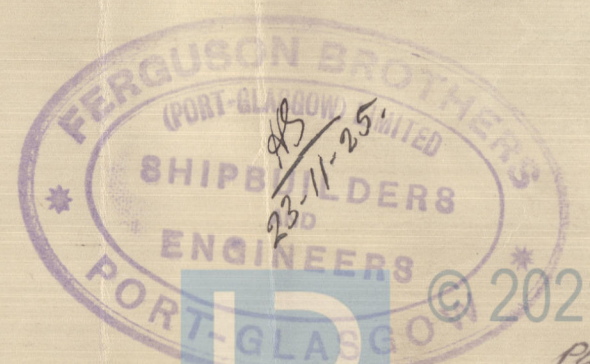
STERNPOST & RUDDER.

SCALE 1" = 1 FT.

FERGUSON BROS.
(PORT-GLASGOW) LTD
SHIPBUILDERS & ENGINEERS

APPROVED
FLOYDS REGISTER OF SHIPPING

Payments per 30 days
DATE 25-11-76

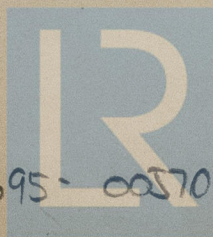


Serguson Bros
(Port Glasgow) &
Thos. H. Kipper Dudgeon
"CARRONWATER"

N^o. 279.

Sternpost & Rudder.

Gr. K. Rep^t. N^o. 18605.



© 2021

Lloyd's Register
Foundation

005695 - 005708 - 0105