

No 279. PROFILE & DECK PLAN.

TWIN SCREW BOW-WELL BARGE LOADING_BUCKET HOPPER DREDGER.

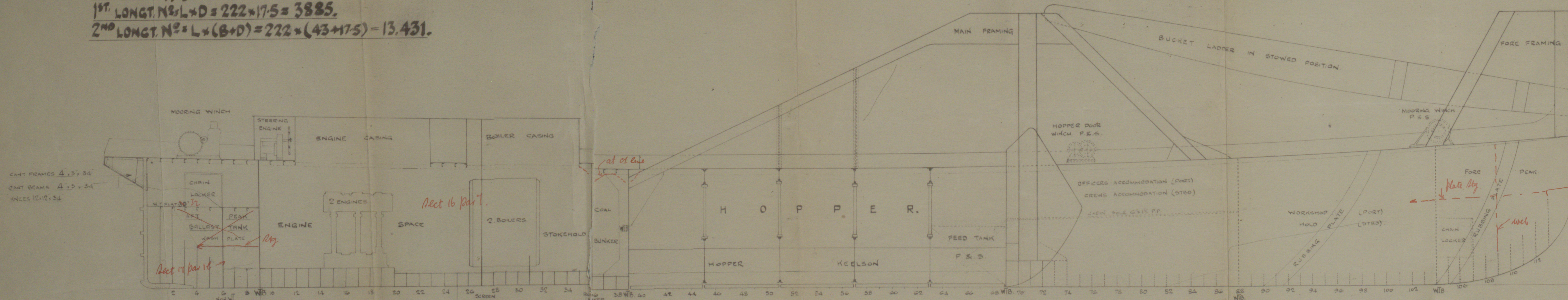
LLOYDS NUMERALS.

L=222. B=43. D=175.
L/D = $\frac{222}{175} = 12.7$. d=13.42
1st LONGT. N^o L/D = $222 \times 175 = 3885$.
2nd LONGT. N^o = L x (B+D) = $222 \times (43+175) = 13,431$.

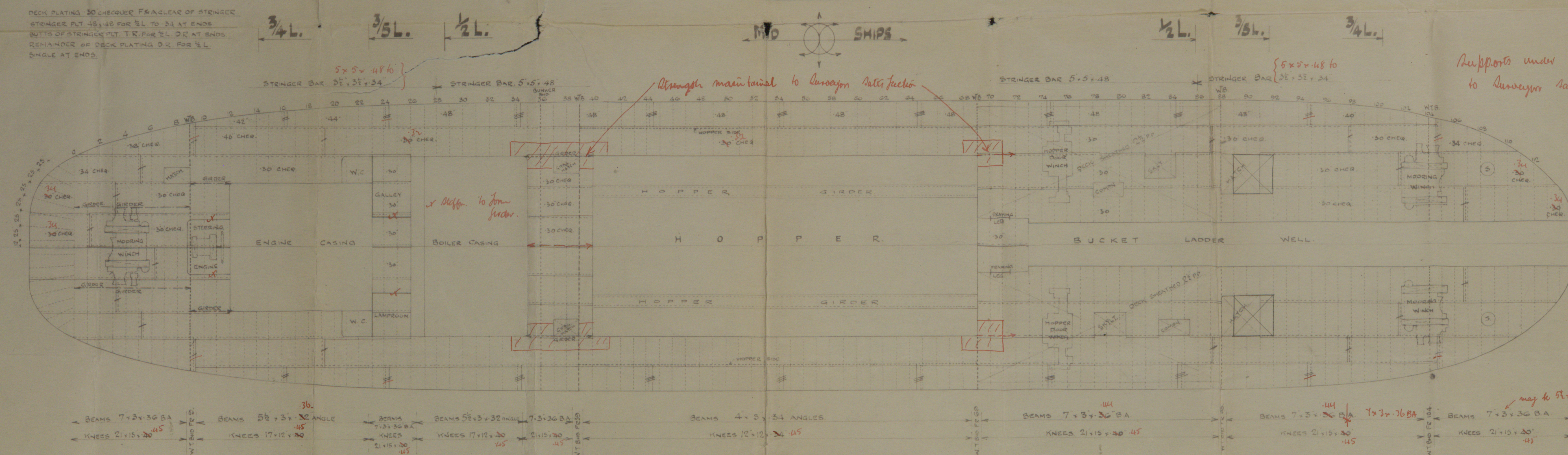
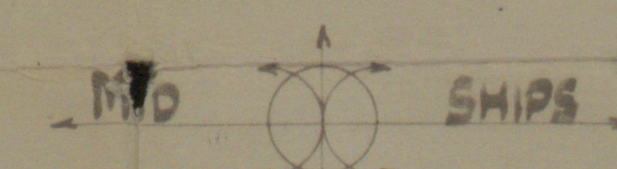
TO LLOYDS LATEST REVISED RULES & REGULATIONS. CLASS LLOYDS 100A.1. HOPPER DREDGER

DIMENSIONS :- 222'0 LLOYDS LENGTH BETWEEN PERES x 43'-0" x 17'-6" MOULDED.

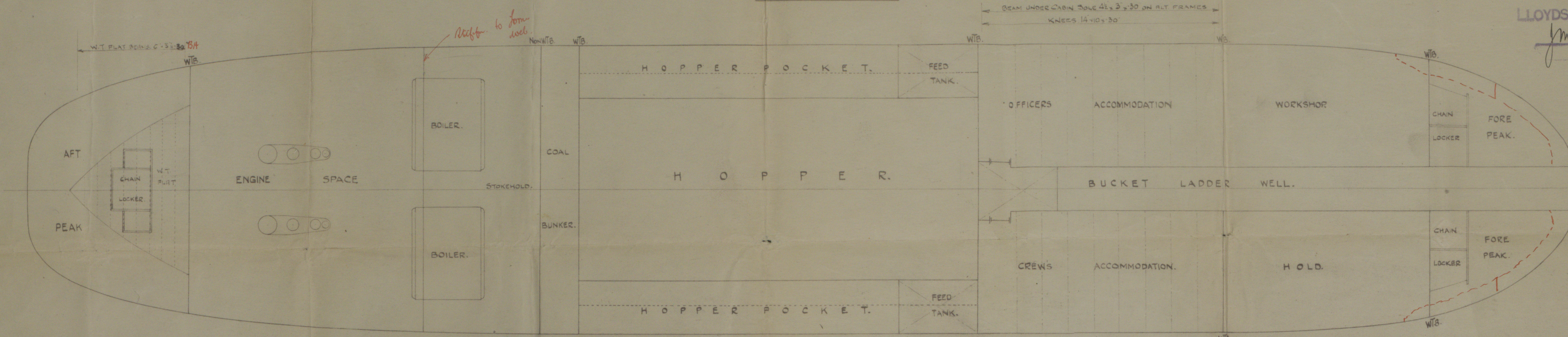
SCALE - 1/8" = 1 FOOT. BULKHEADS - 1/4" = 1 FOOT.



ELEVATION.

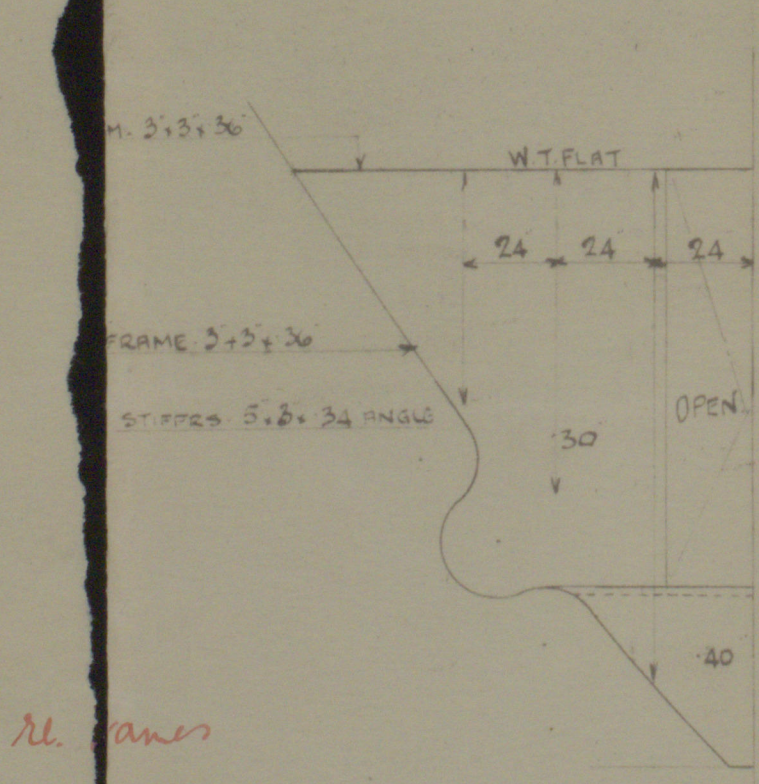


MAIN DECK PLAN.

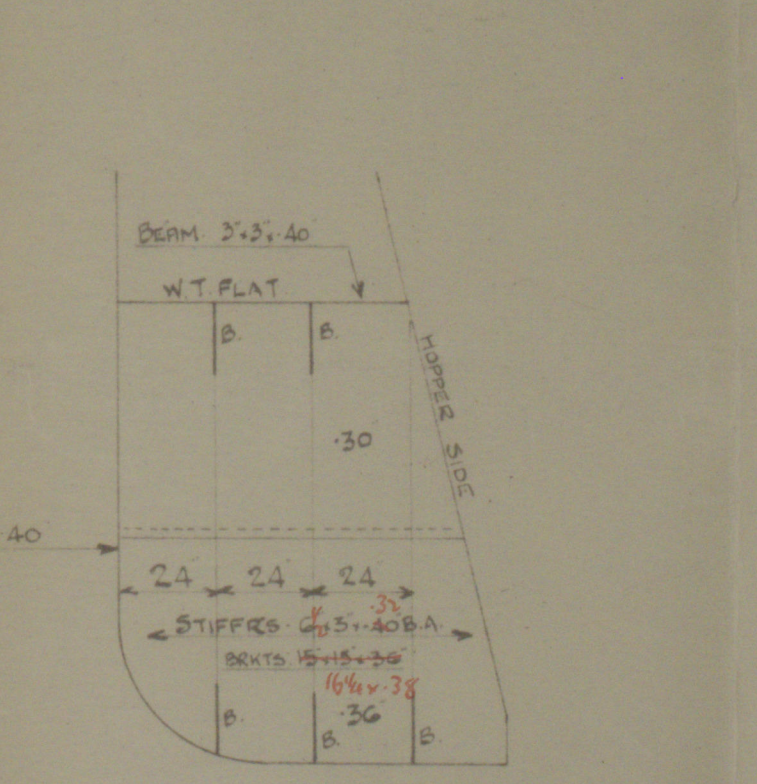


UNDER DECK PLAN.

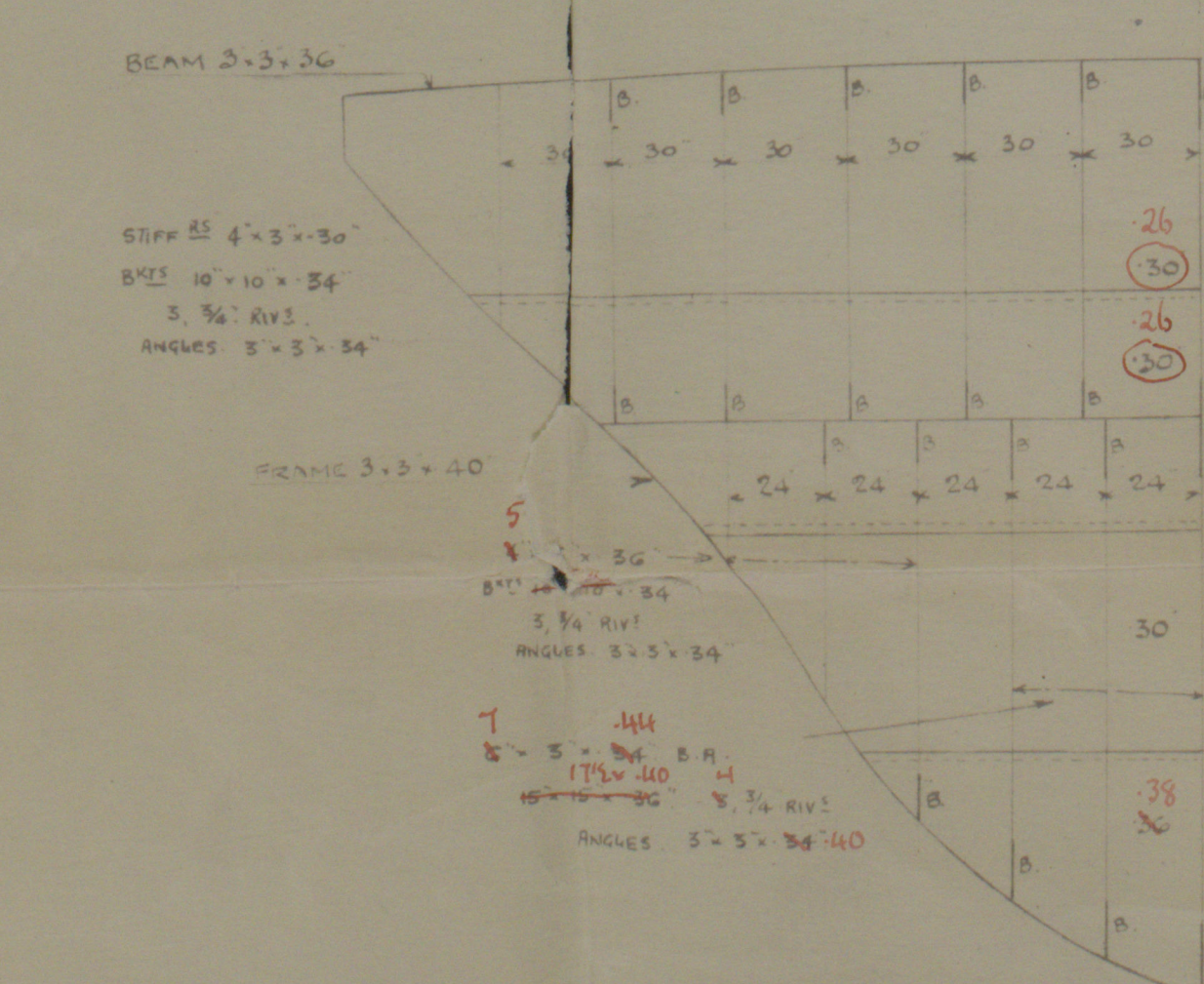
FERGUSON BROS.
(PORT GLASGOW) LTD
SHIPBUILDERS & ENGINEERS



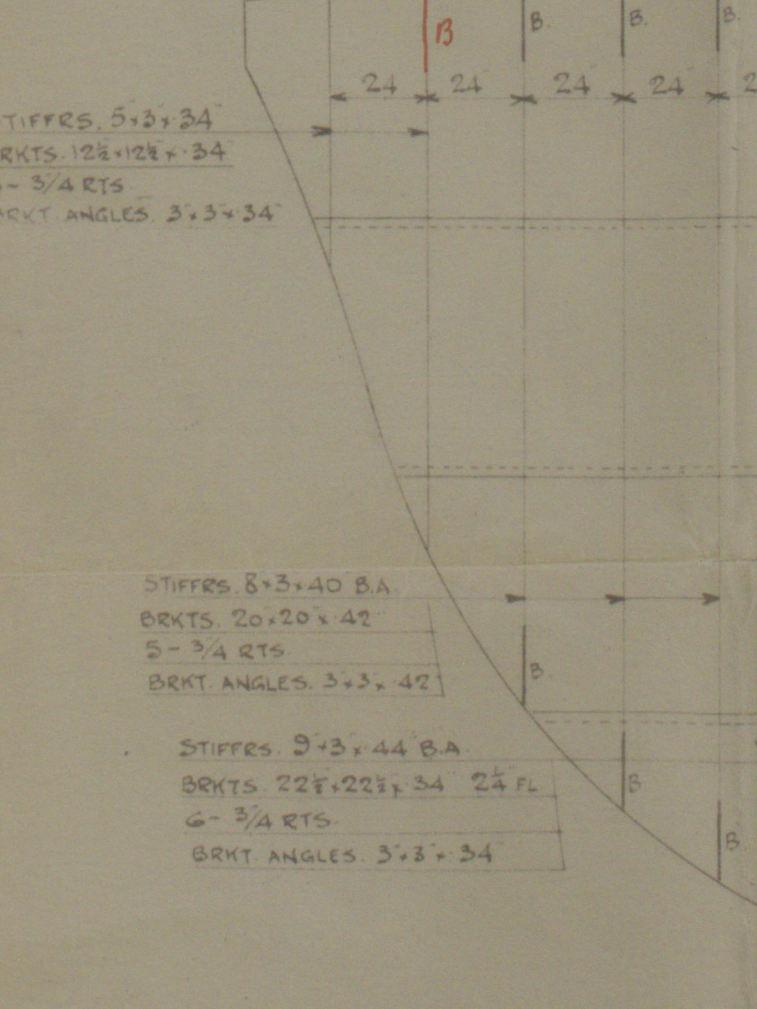
NON W.T. BOSS BND. FR. 6.



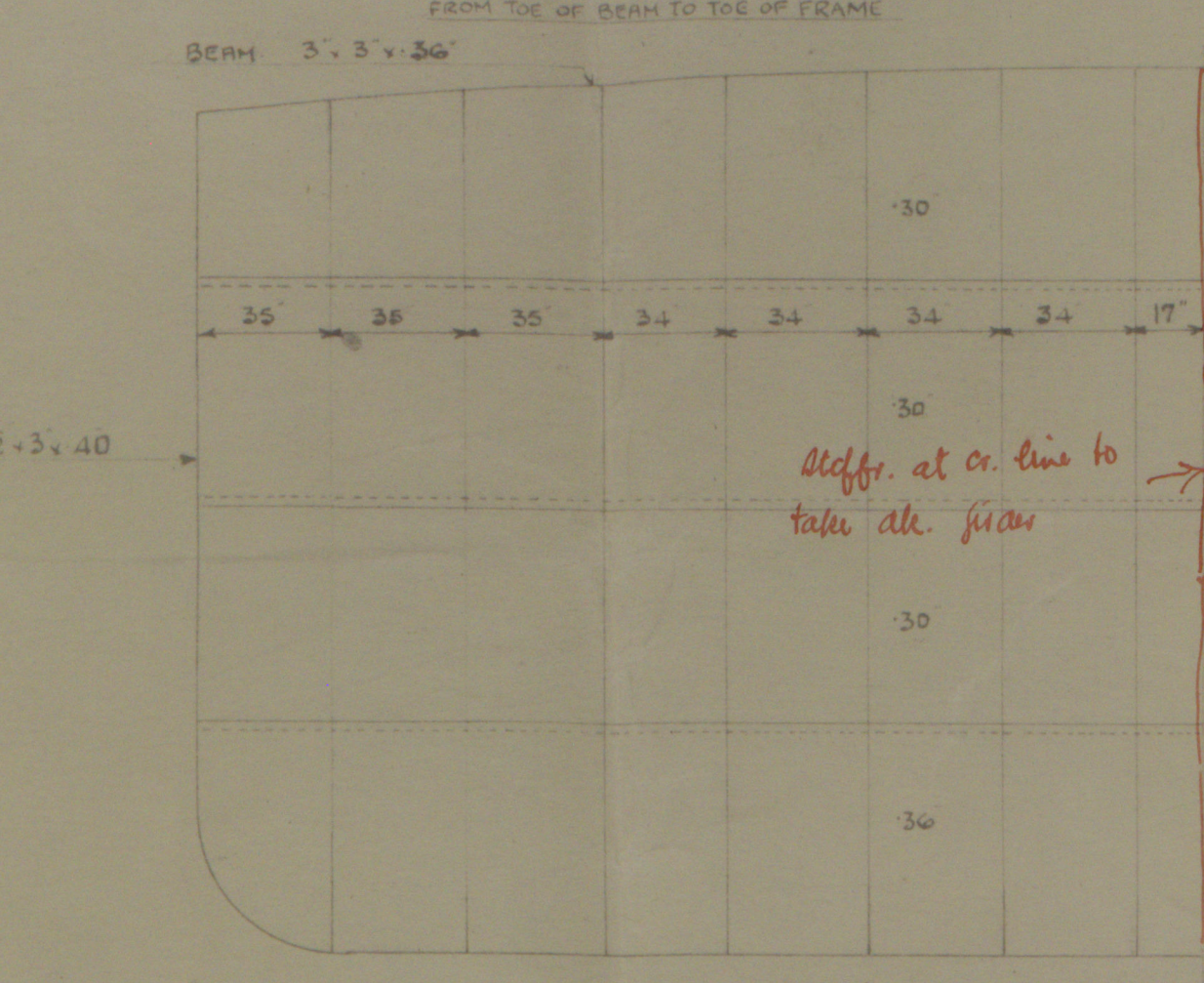
FEED TANK BND. FR. 63 P.S.



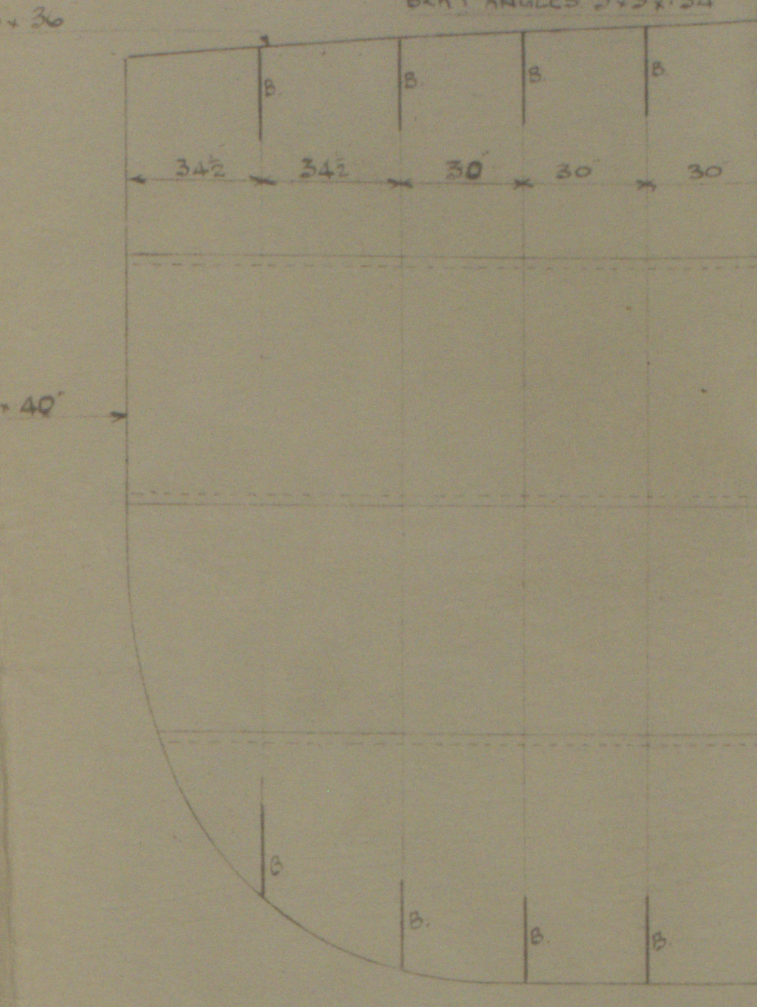
W.T. PEAK BND. FR. 9



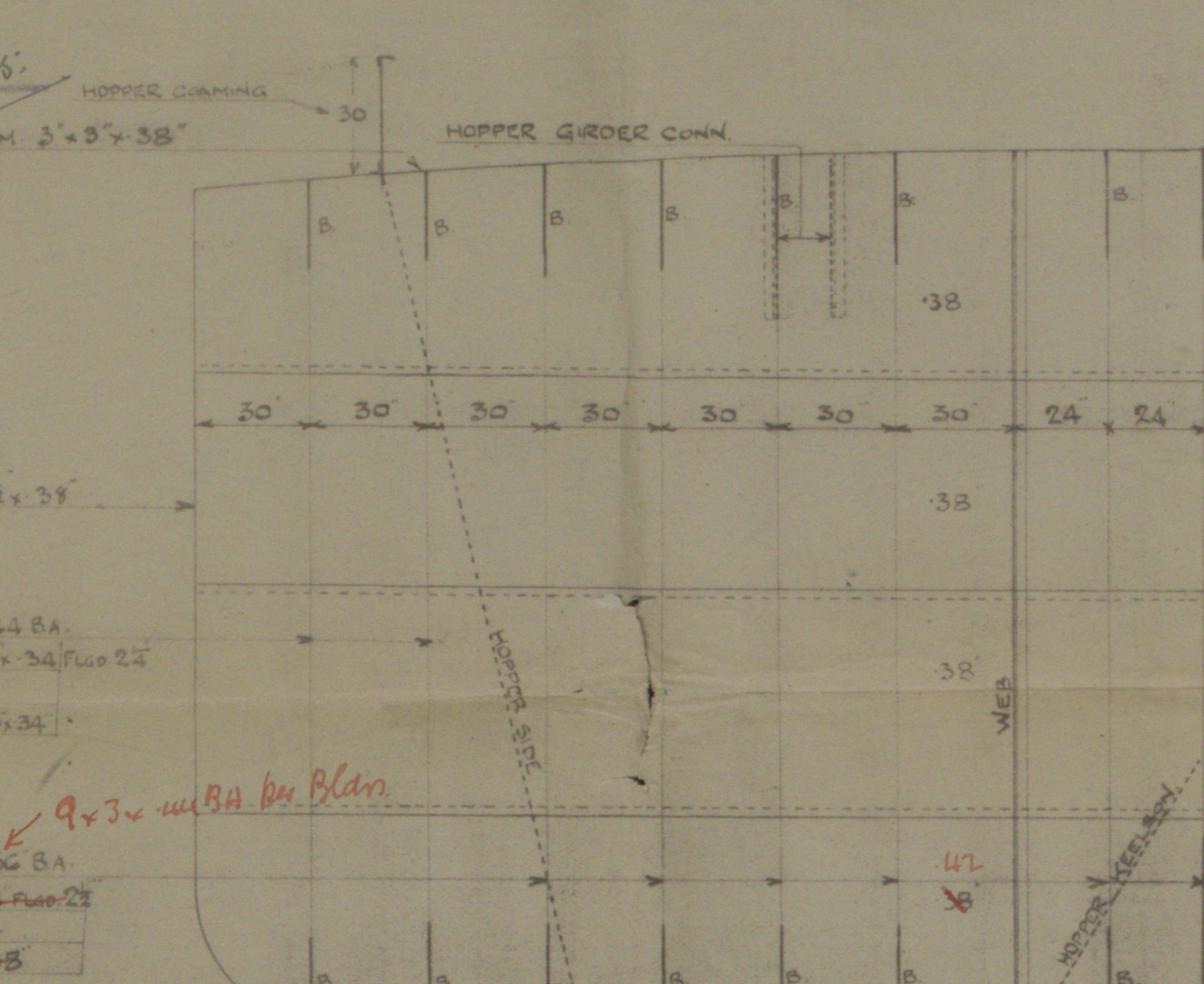
W.T. PEAK BND. FR. 104 P.S.



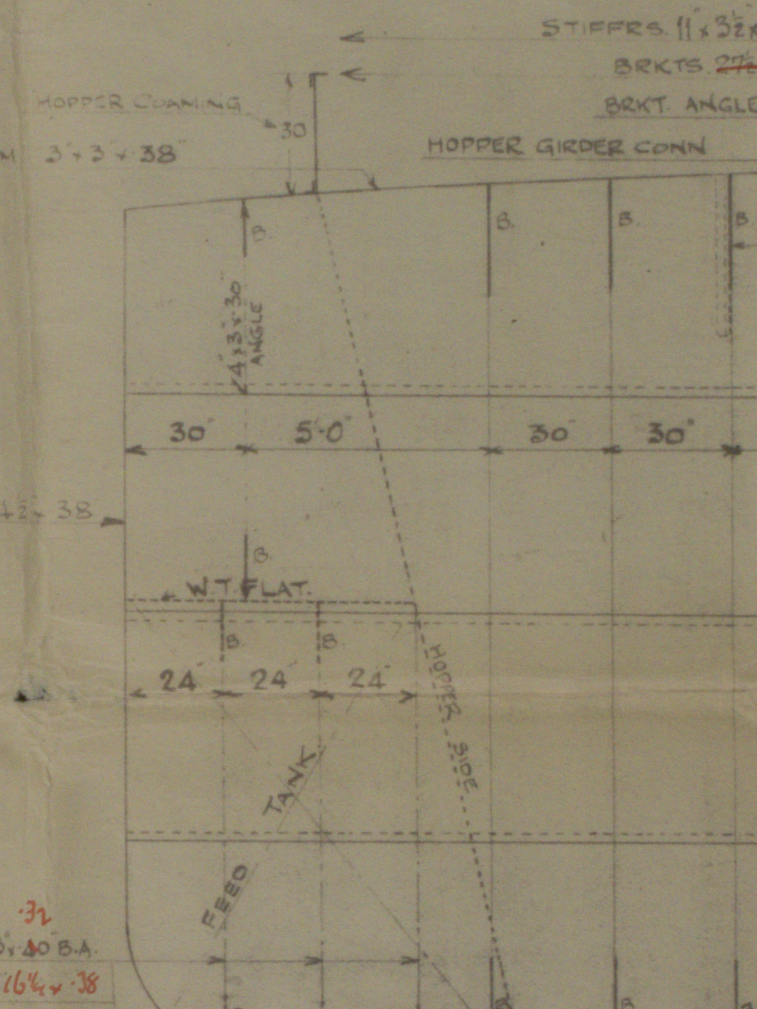
NON-W.T. BUNKER BND. FR. 36.



W.T. BND. FR. 88 P.S.



W.T. HOPPER END BND. FR. 39



W.T. HOPPER END BND. FR. 49

APPROVED
LLOYDS REGISTER OF SHIPPING
M. J. GIBSON
DATE 25.11.28

003495-005708-0103

Serguson Bros.

(Port Glasgow) Ltd.

Surv. & Hopper Dredger

"CARRONWATER"

N^o. 279.

Profile & D^r plans.

Gr. K. Ref^y N^o. 18605.



© 2021

Lloyd's Register
Foundation

005695-005708-0103