

SHIP NO^s 628 & 629. STEM, STERNPOST, & RUDDER.

STEEL SINGLE SCREW MOTOR VESSELS.

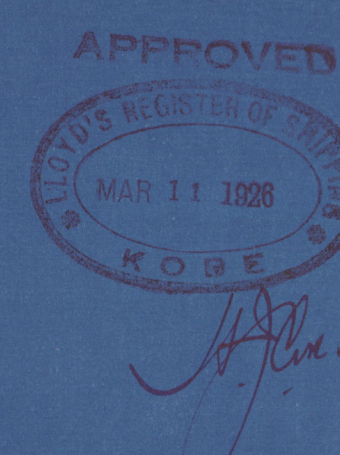
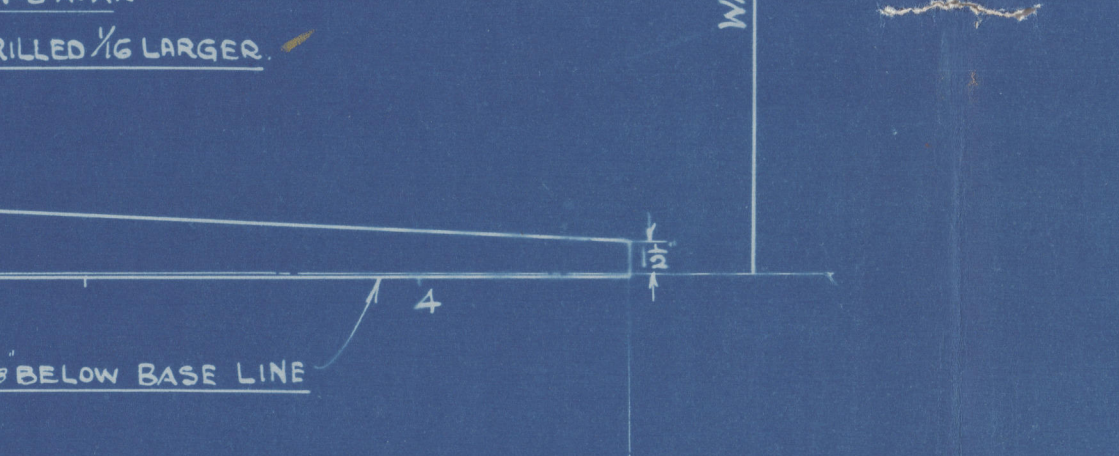
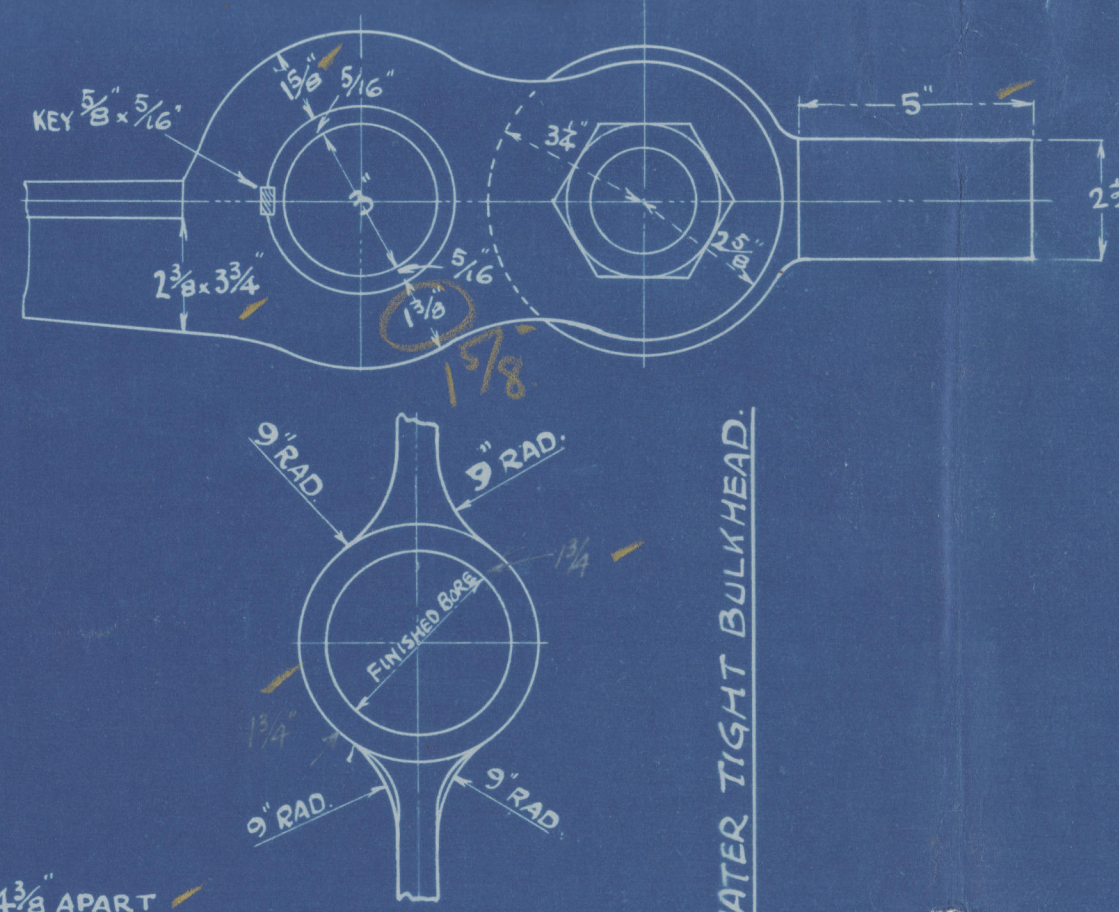
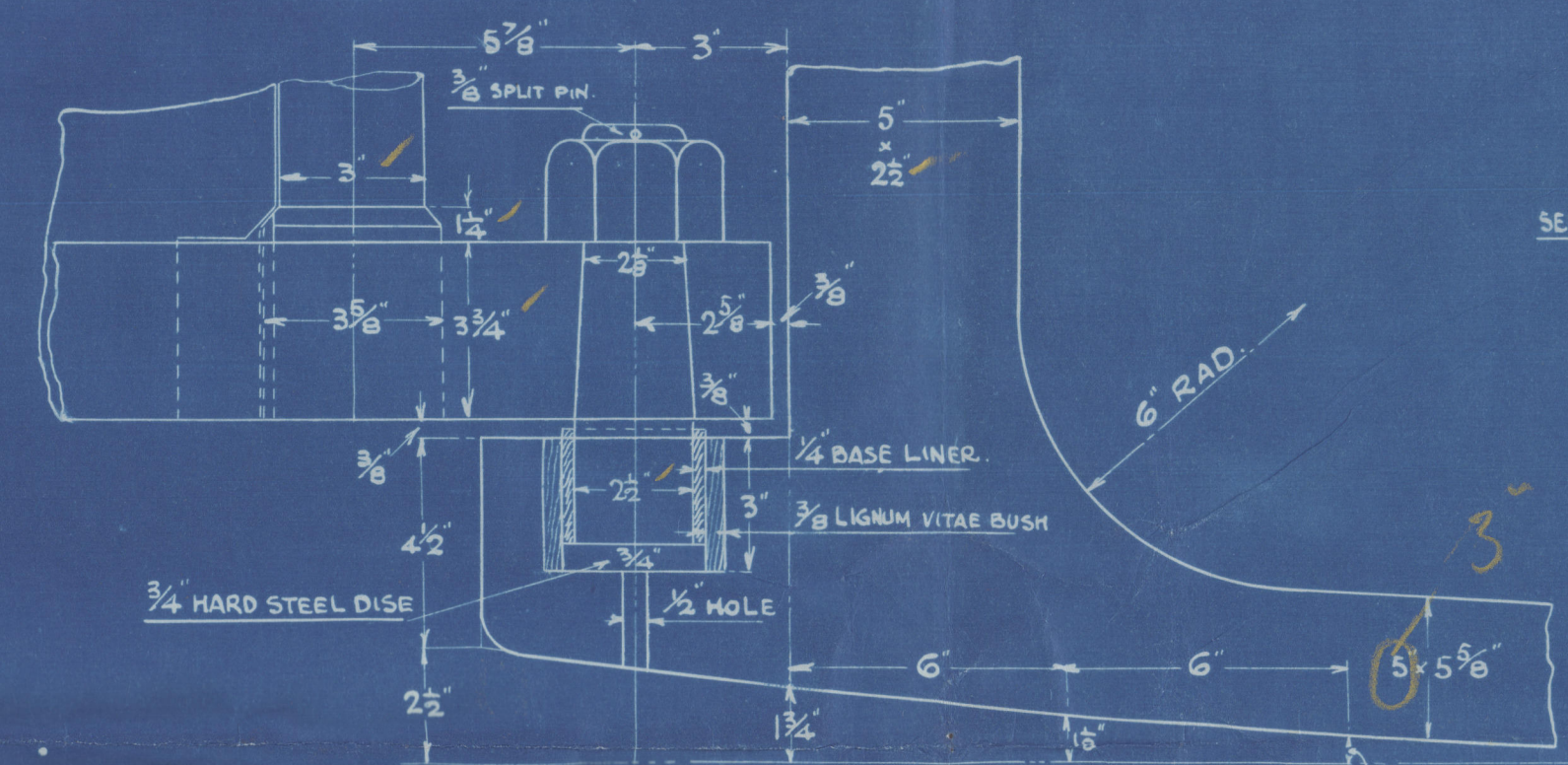
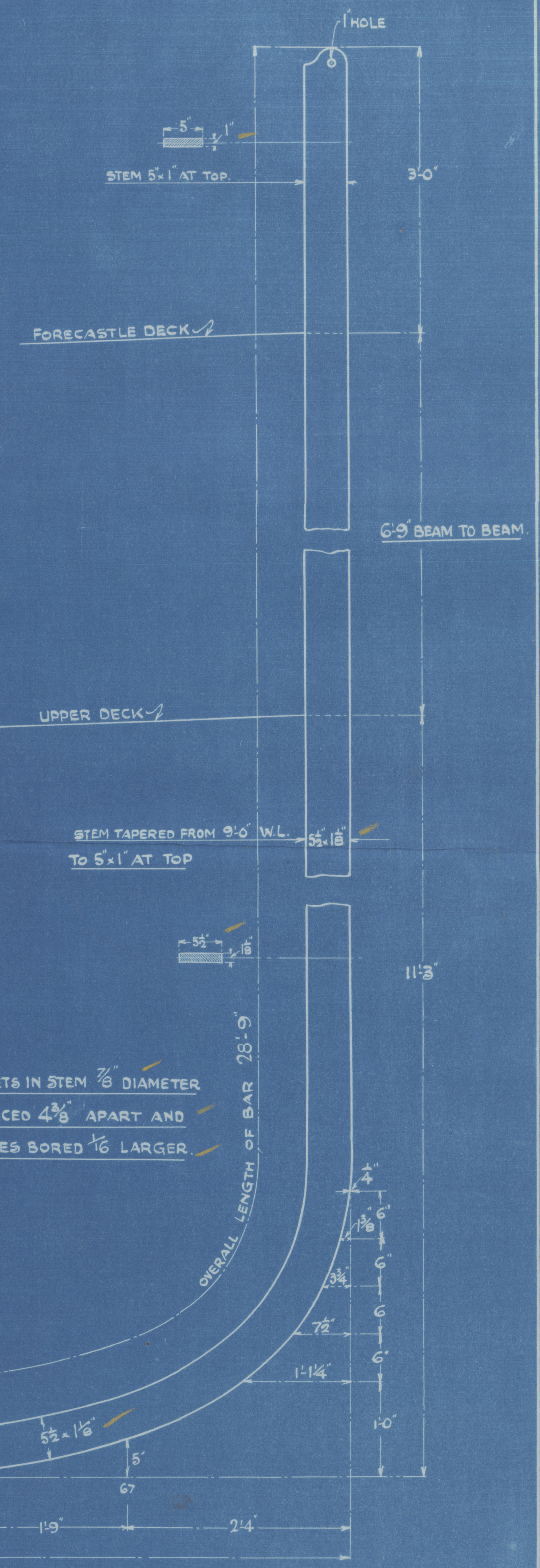
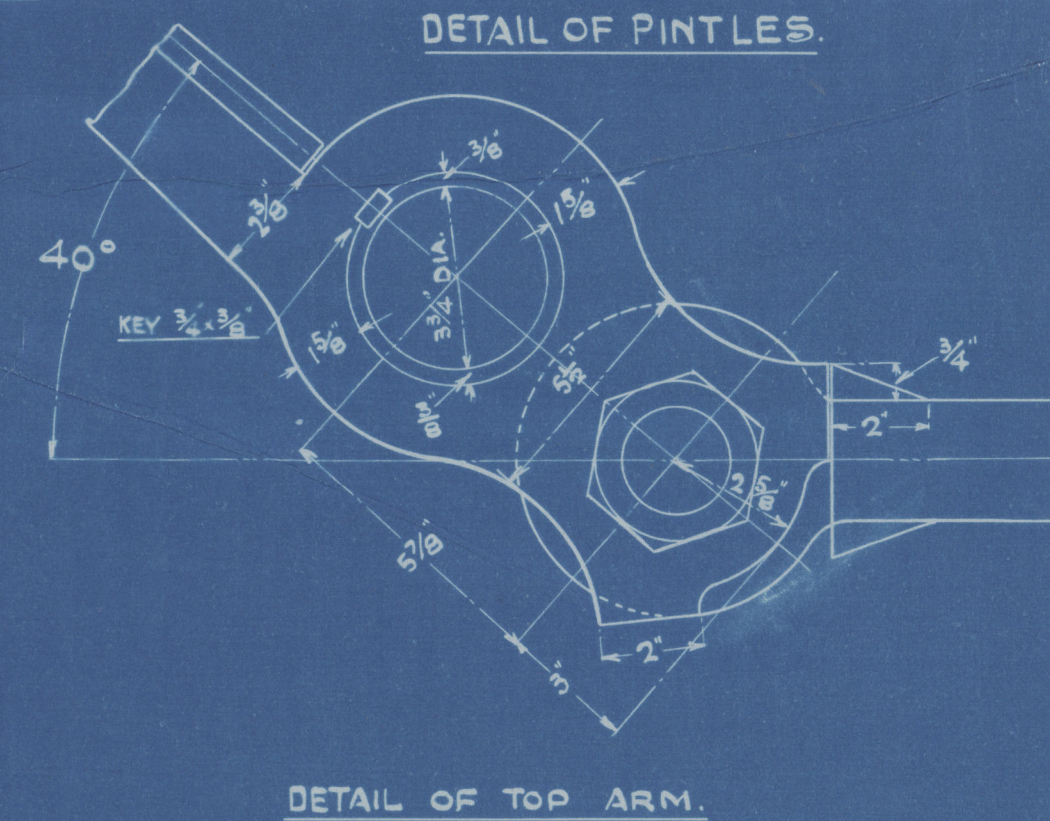
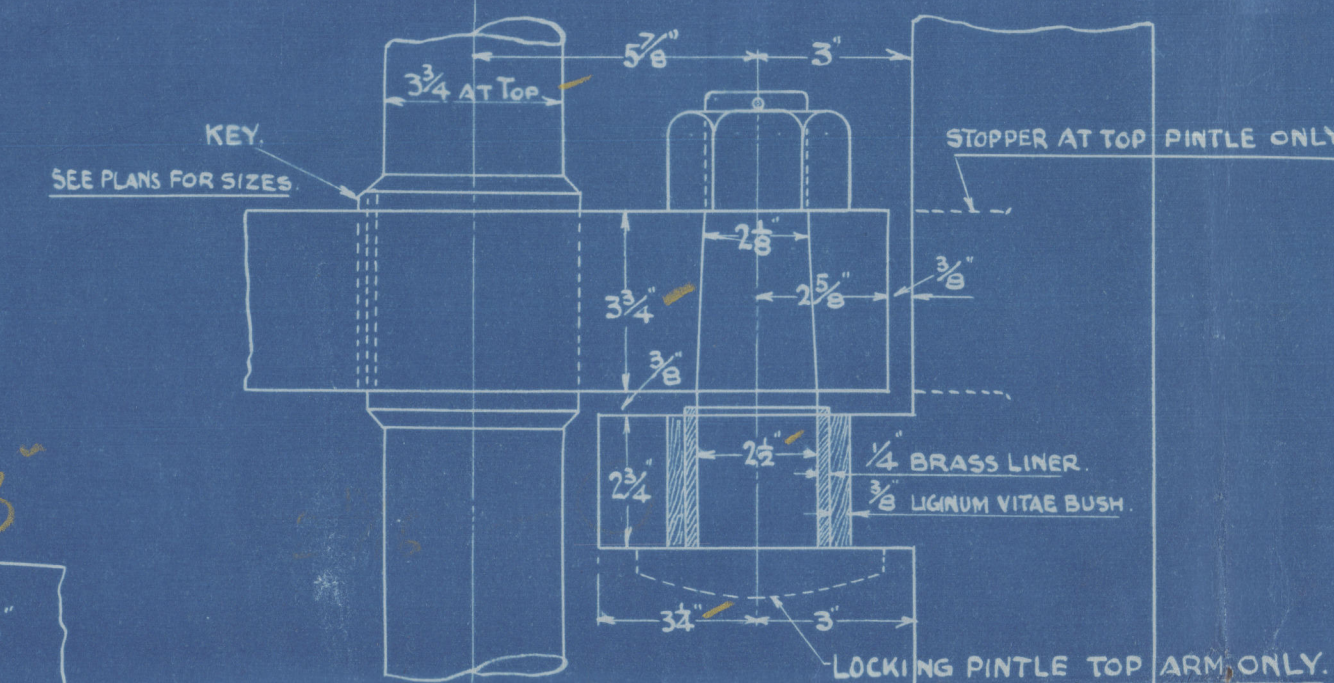
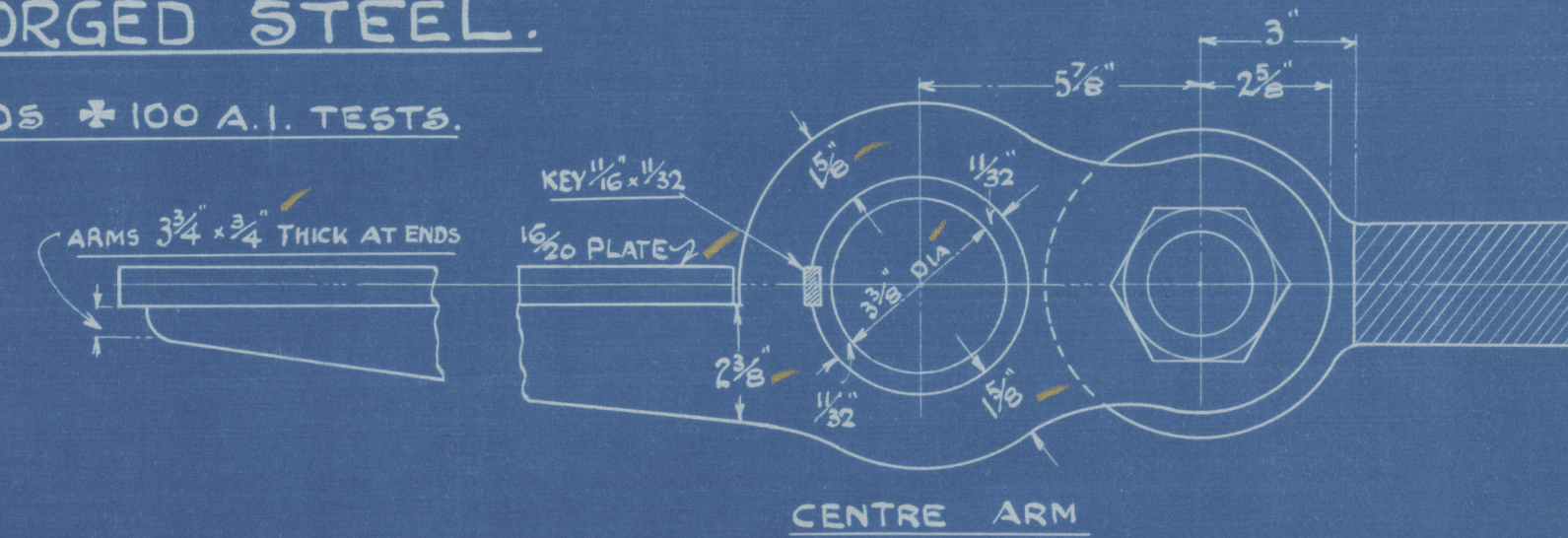
DIMENSIONS = 120'-0" B.P. x 24'-0" MLD x 8'-6" MLD.

SCALES 1" & 3" = ONE FOOT.

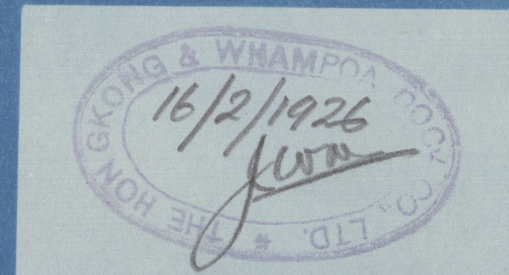
MATERIAL: FORGED STEEL.

TO LLOYD'S 100 A.I. TESTS.

A = FULL AREA OF RUDDER = $22\frac{1}{2}$ f²
 AREA TO 5'-0" W.L. = $17\frac{1}{2}$ f²
 D = G.G. ABAFT PINTLES = 2'-4"
 A x D = 54.0
 SPEED = 8 KNOTS.



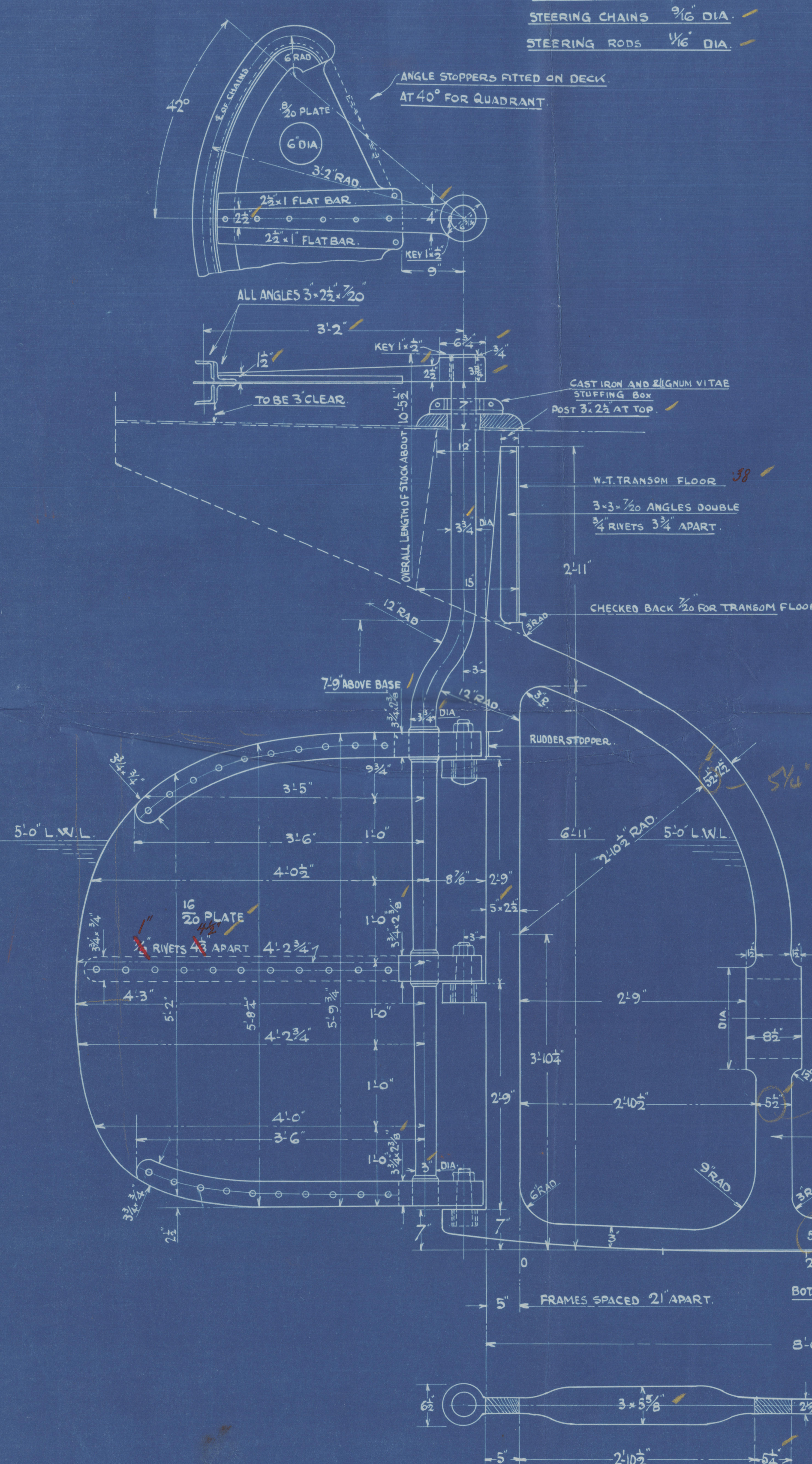
MR. 16/2/1926
 5 copies to Lloyd's 16/2/1926



HONGKONG & WHAMPOA DOCK CO. LTD.
 DRAWING NO. 69
 1.192

NOTES

DOUBLE BLOCKS AND MANILLA
 REVEIVING TACKLE FITTED
 STEERING CHAINS 3/16" DIA.
 STEERING RODS 1/16" DIA.



Hong Kong to Shanghai & R

628-9

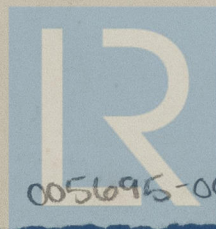
Reader.

²
Mr. Aloha⁴

Hkg 6027.

~~GEN. BOX NO~~

~~884.~~



© 2021

Lloyd's Register
Foundation

005695-005708-0018