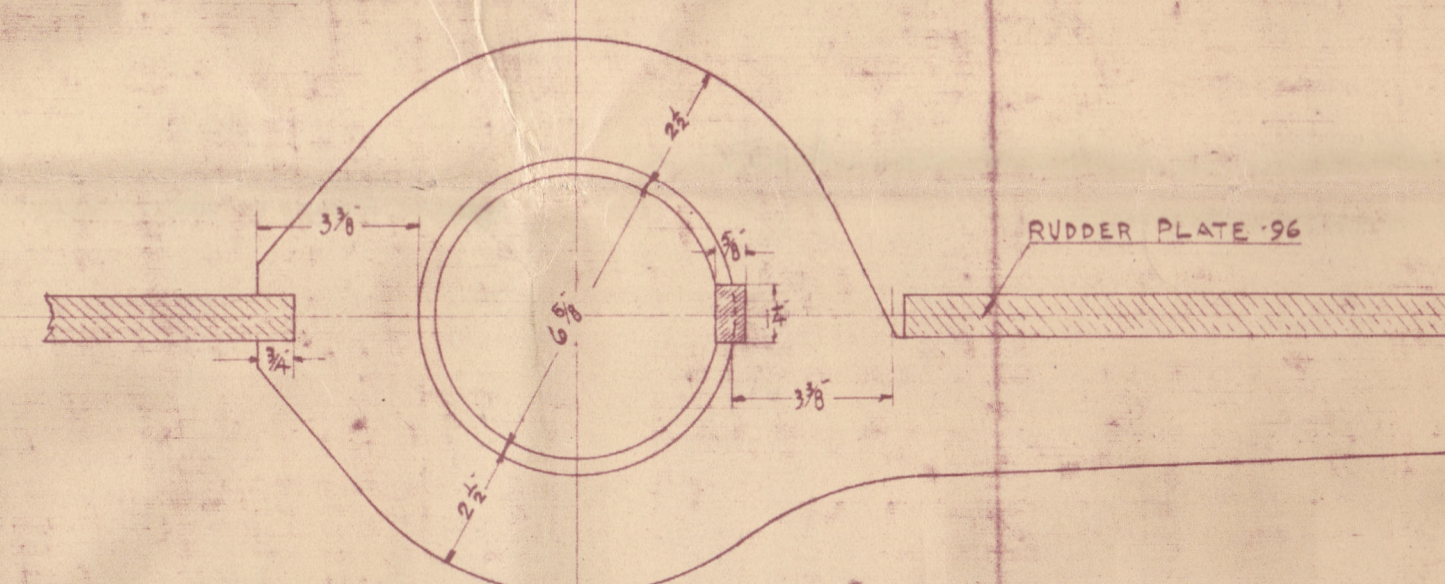
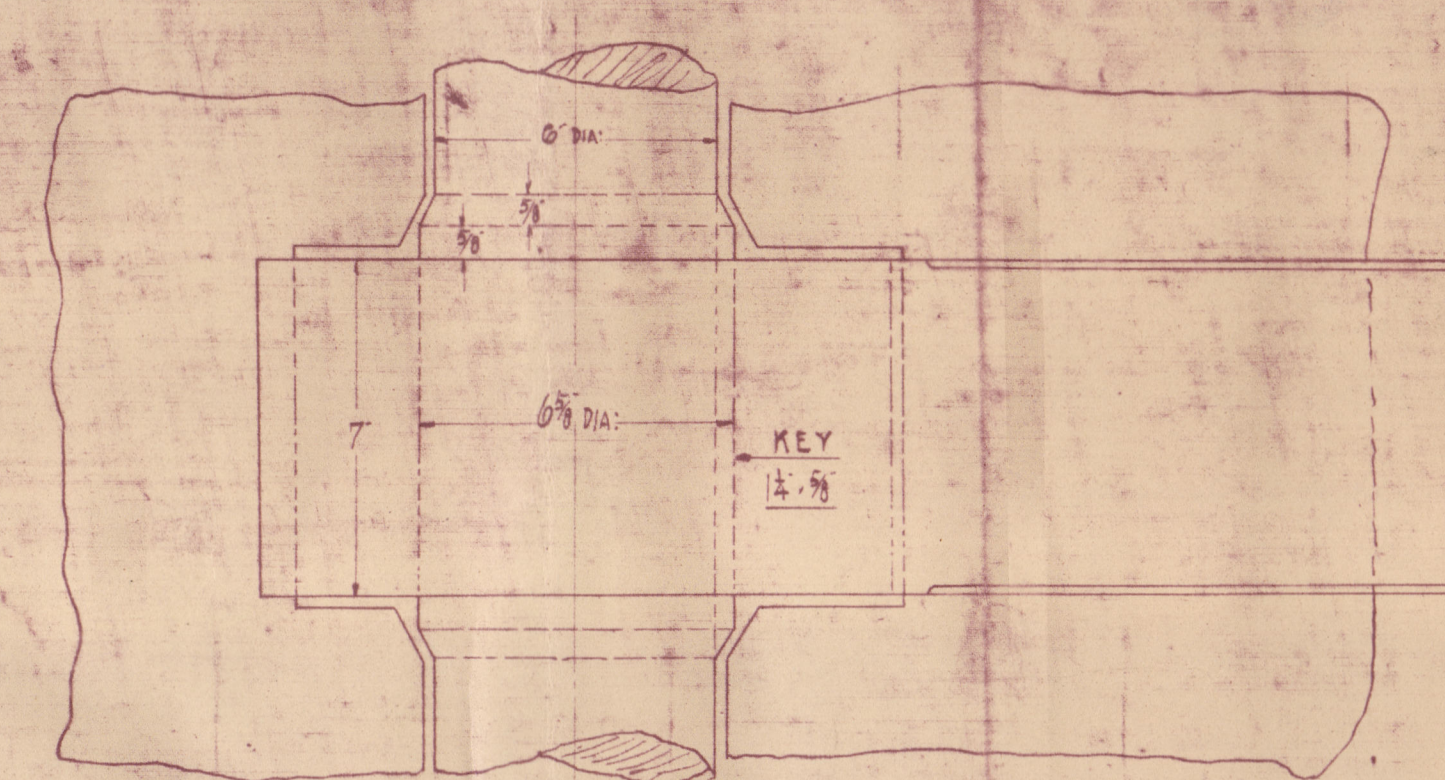
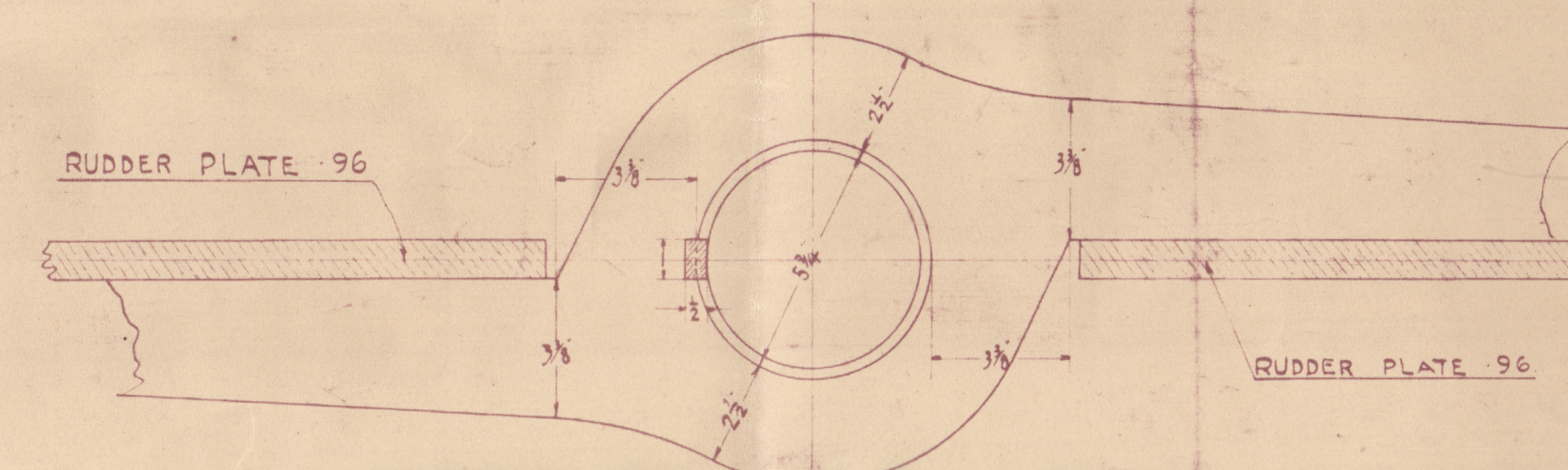
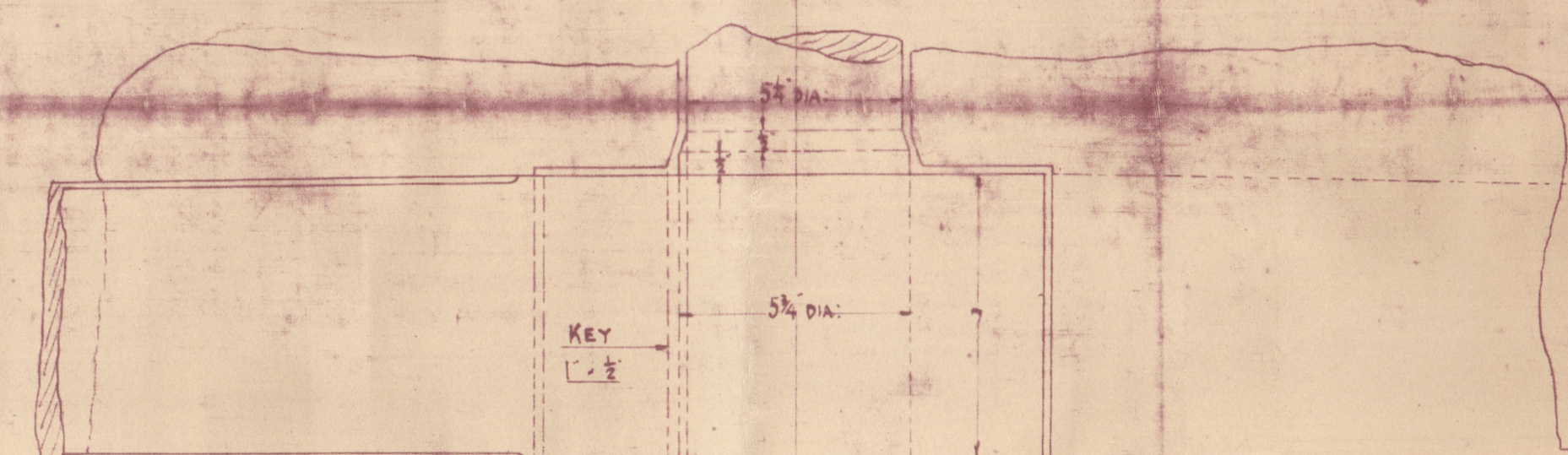
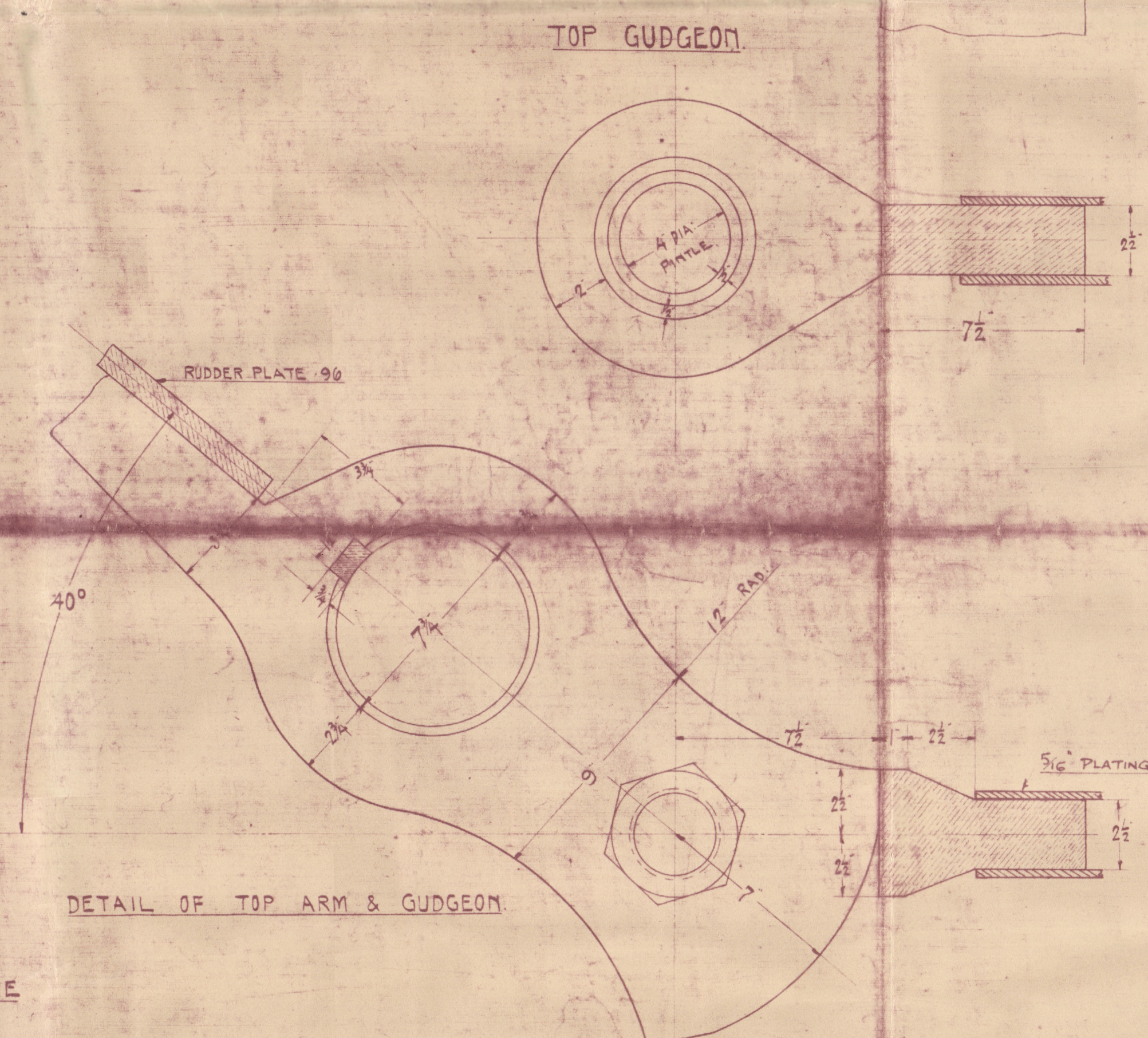


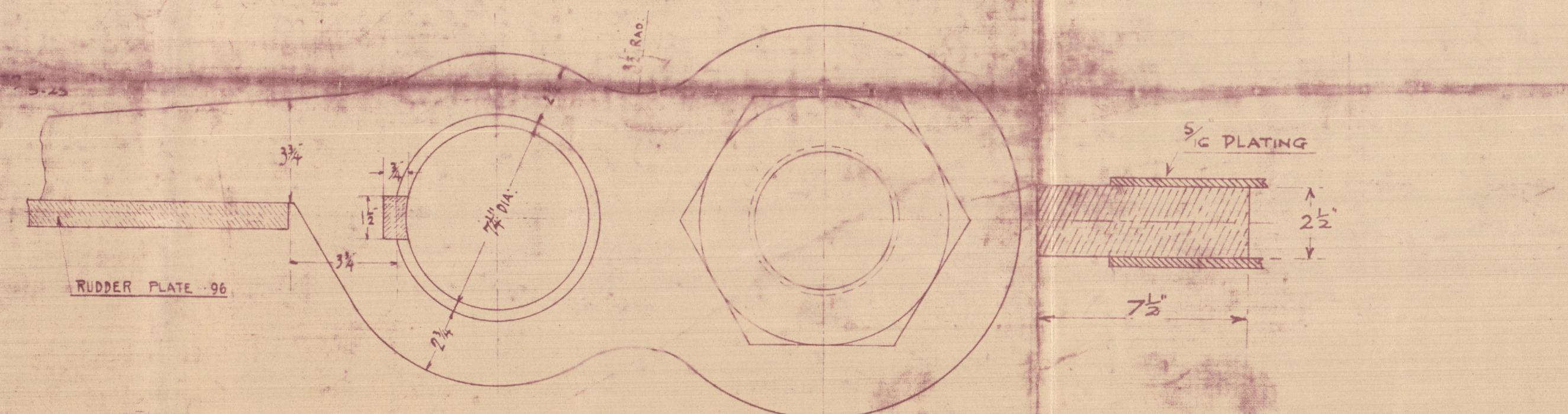
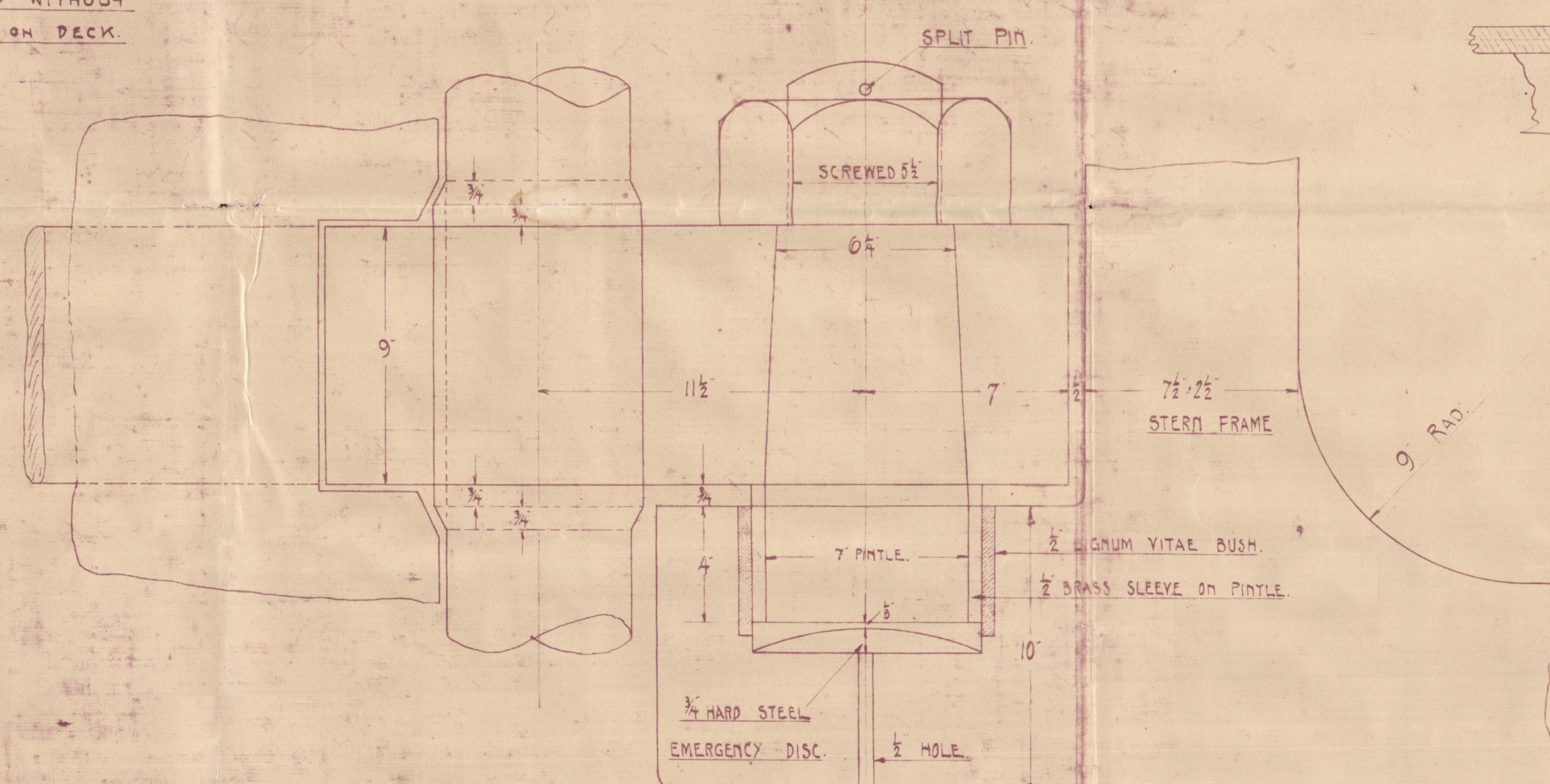
SCALE  $\frac{1}{2}" = 1$  FOOT DETAILS  $3" = 1$  FT.



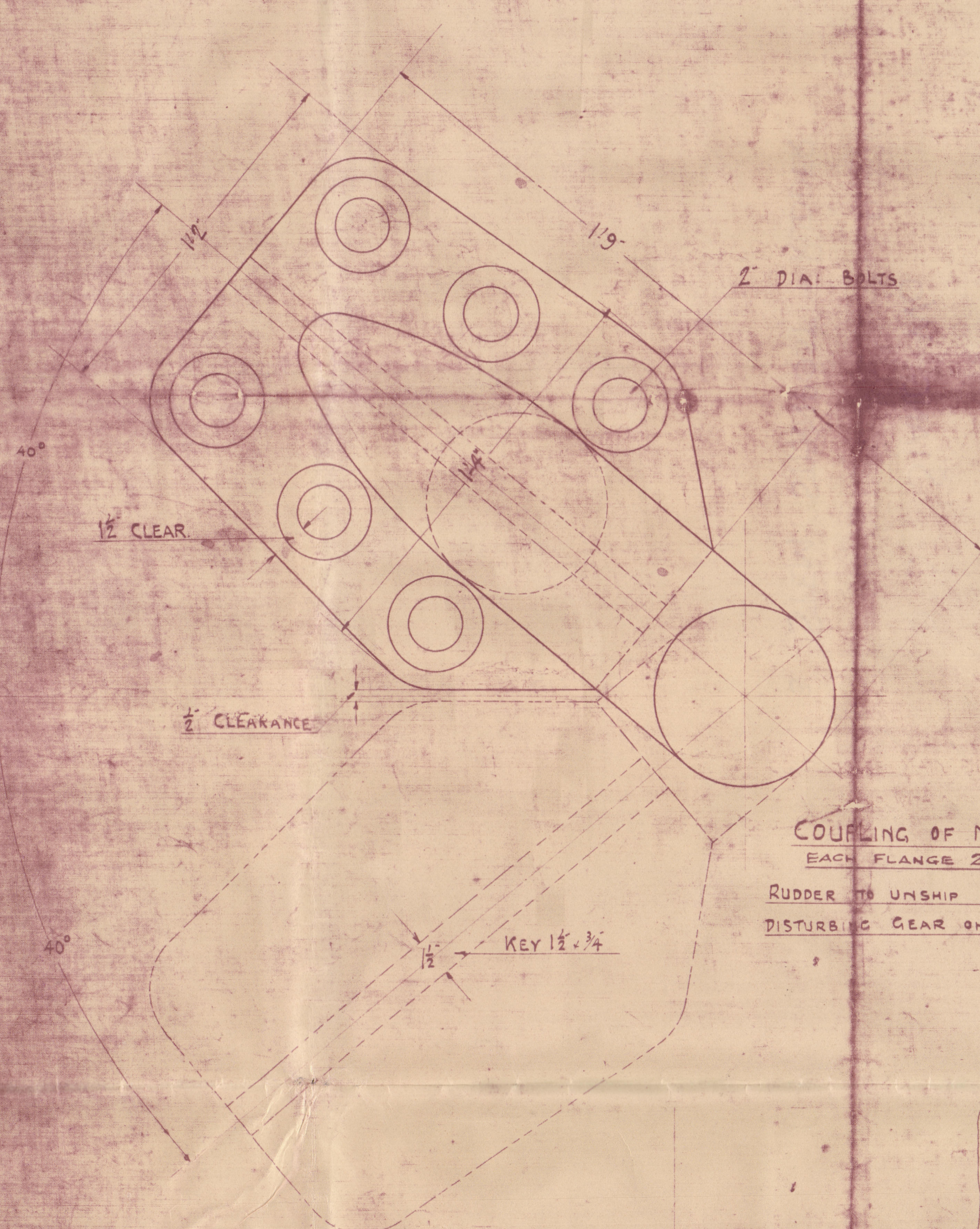
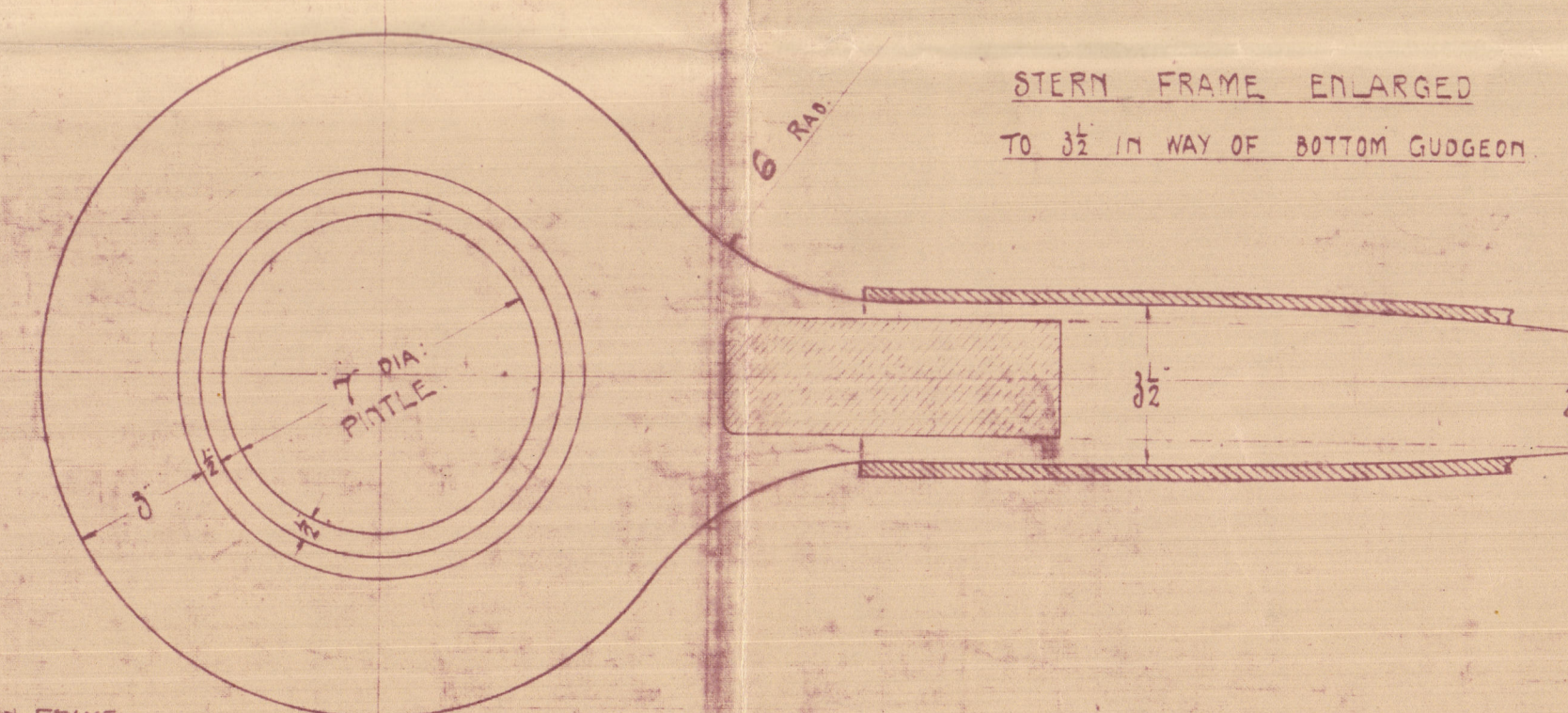
DETAIL OF LOWER ARM "A"



DETAIL OF BOTTOM ARM

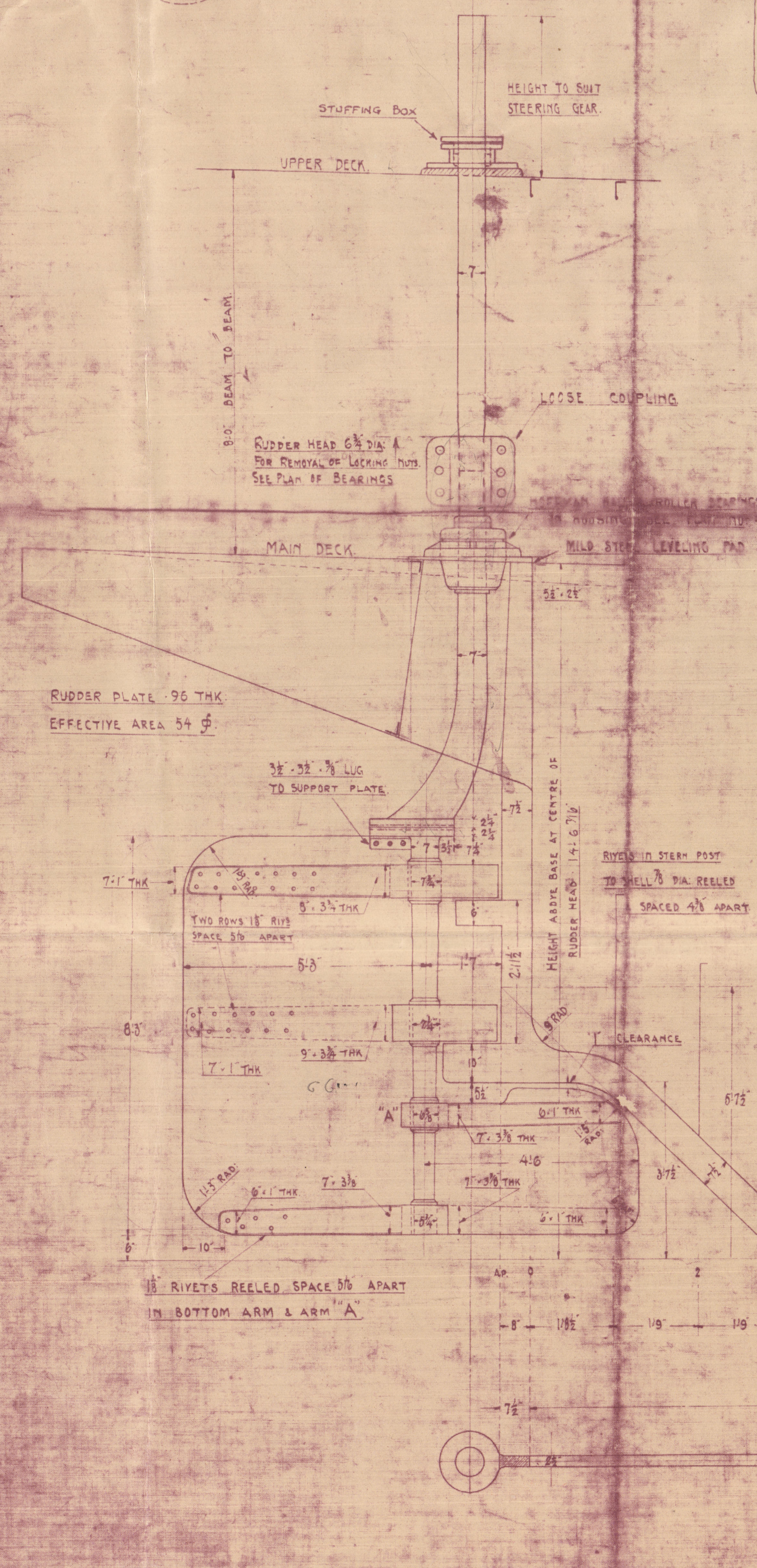


BOTTOM GUDGEON



COUPLING OF MAIN PIECE  
EACH FLANGE 26" DIA

RUDDER TO UNSHIP WITHOUT  
DISTURBING GEAR ON DECK.



STEM RIVETING  
 $\frac{7}{8}$  DIA RIVETS SPACED  $4\frac{3}{8}$  APART

TOTAL LENGTH ABOUT 38' 9" AT INNER EDGE



НОПС НОПС & WHAMPIA PDSK Co. Ltd

DRAWING NO. 57

Lloyd's Re

005643-0209



S. S. SIANG WO

Shi 4276.

3. STEM, STERNPOST, & RUDDER.



© 2021

Lloyd's Register  
Foundation

005635-005643-0209