

3/5/27

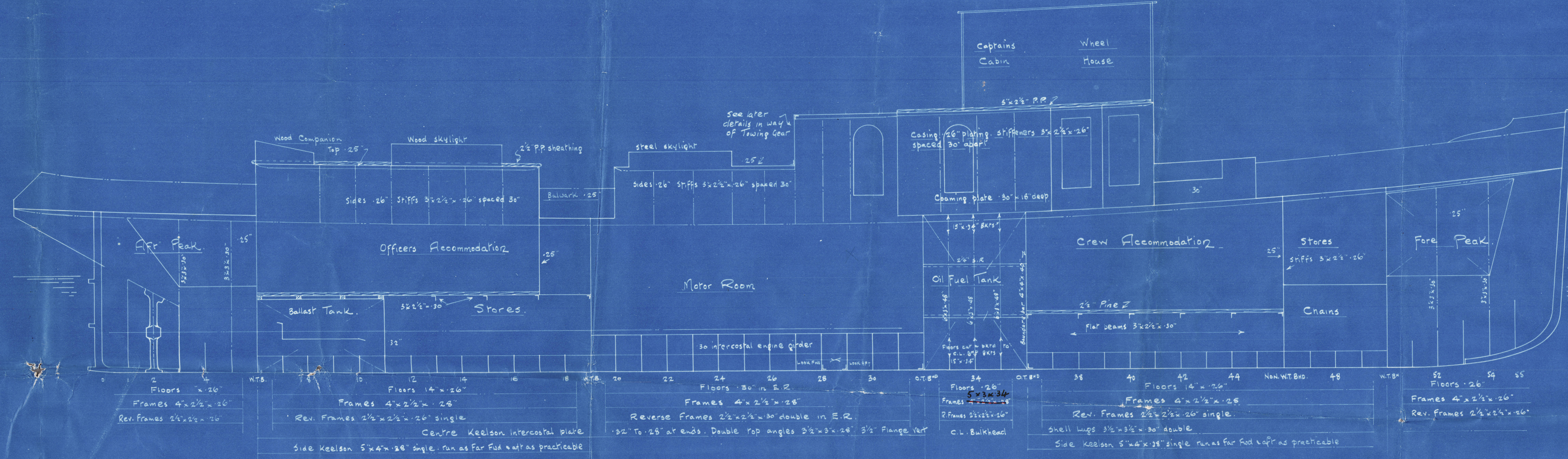
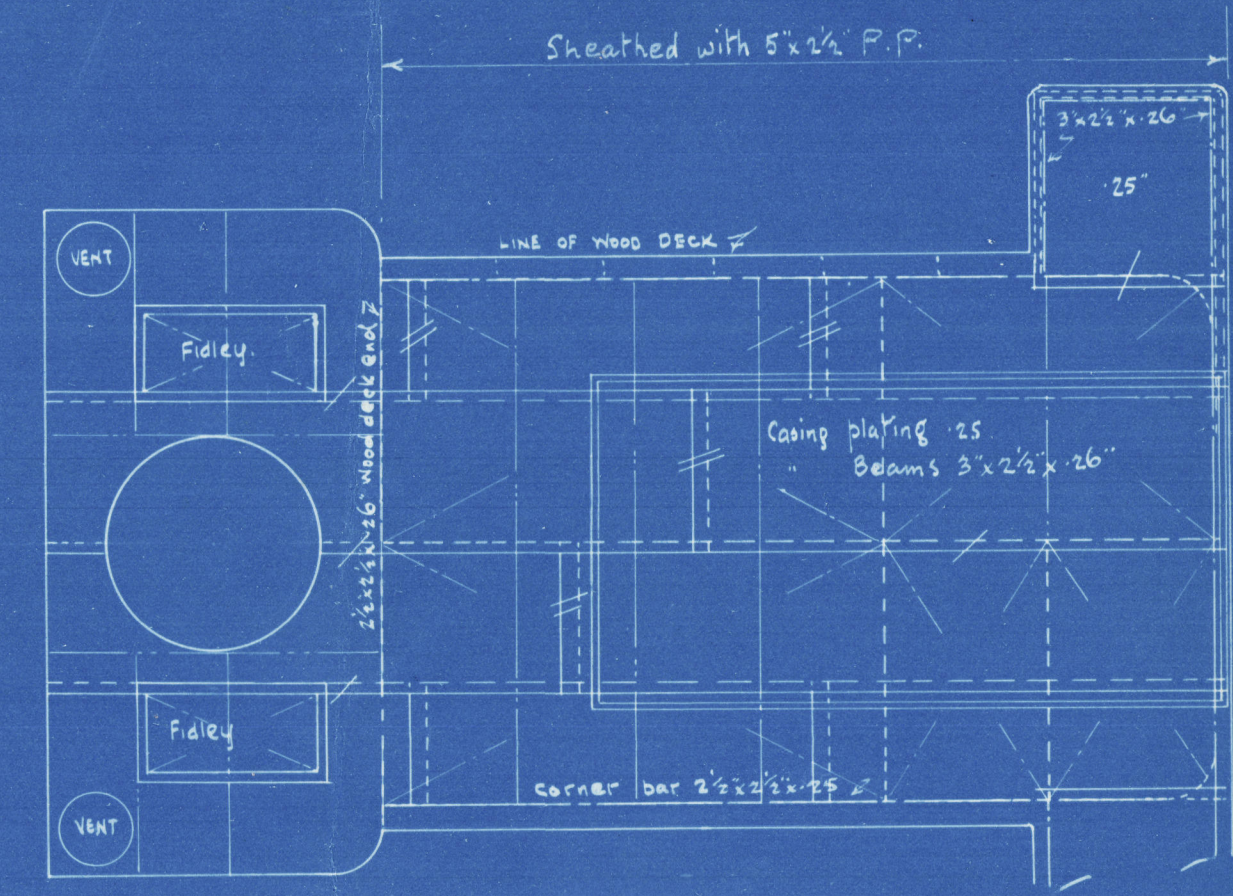
Steel Twin Screw Motor Tug No 448

Dimensions 100'-0" B.P. x 21'-0" mld x 10'-0" mld

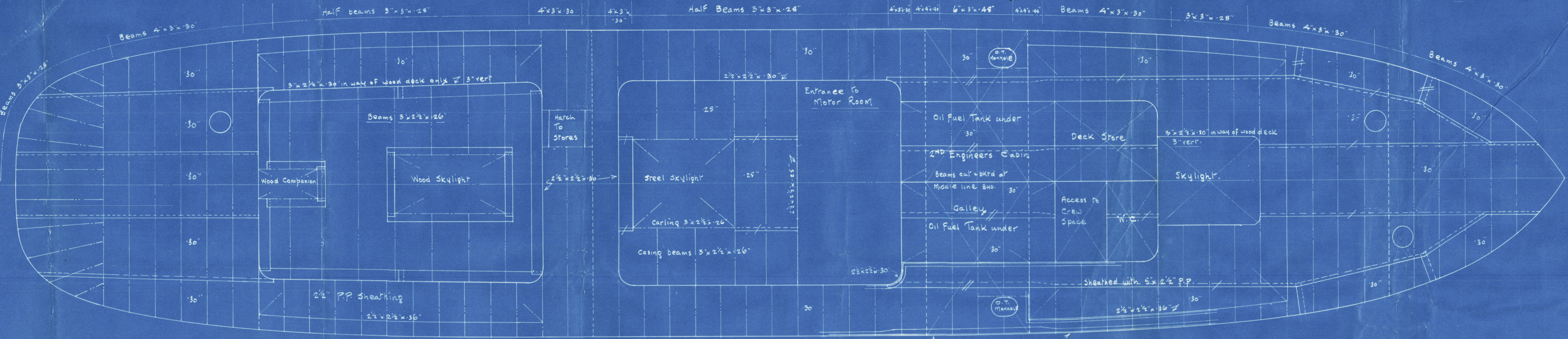
Lays Ramerals L x D = 100 x 10 = 1000. L x (B+D) = 100 x (21+10) = 3100

To Class 100 A For Towing Purposes.

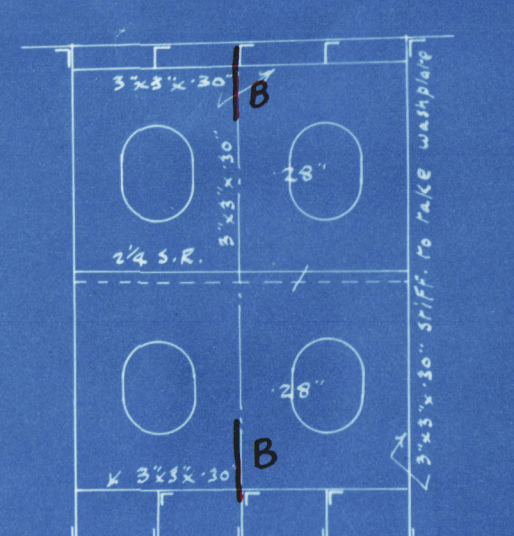
Scale 1/4" and 1/2" = 1 Foot Plan No 3448



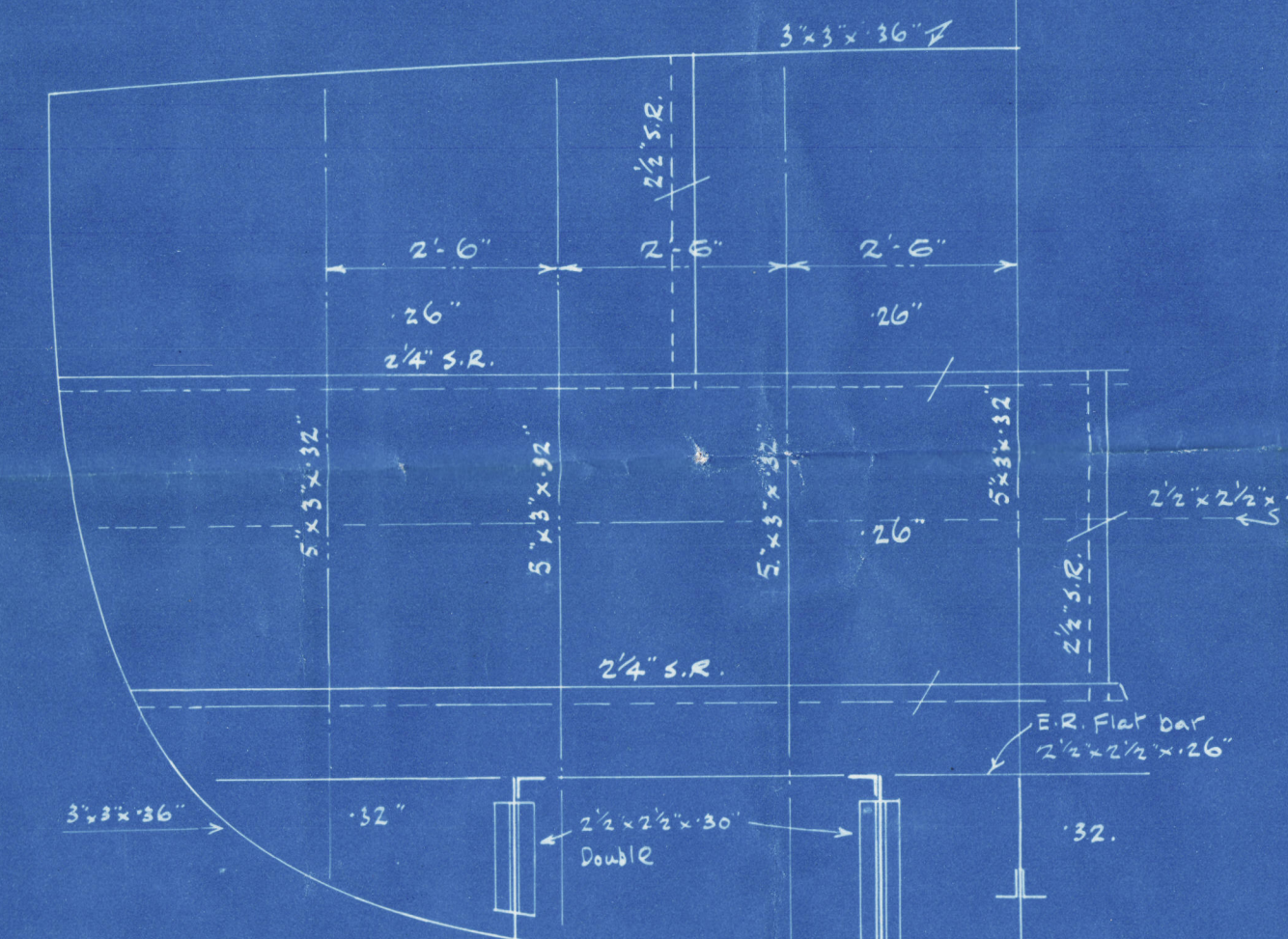
Billings throughout to Savage's retroflection.



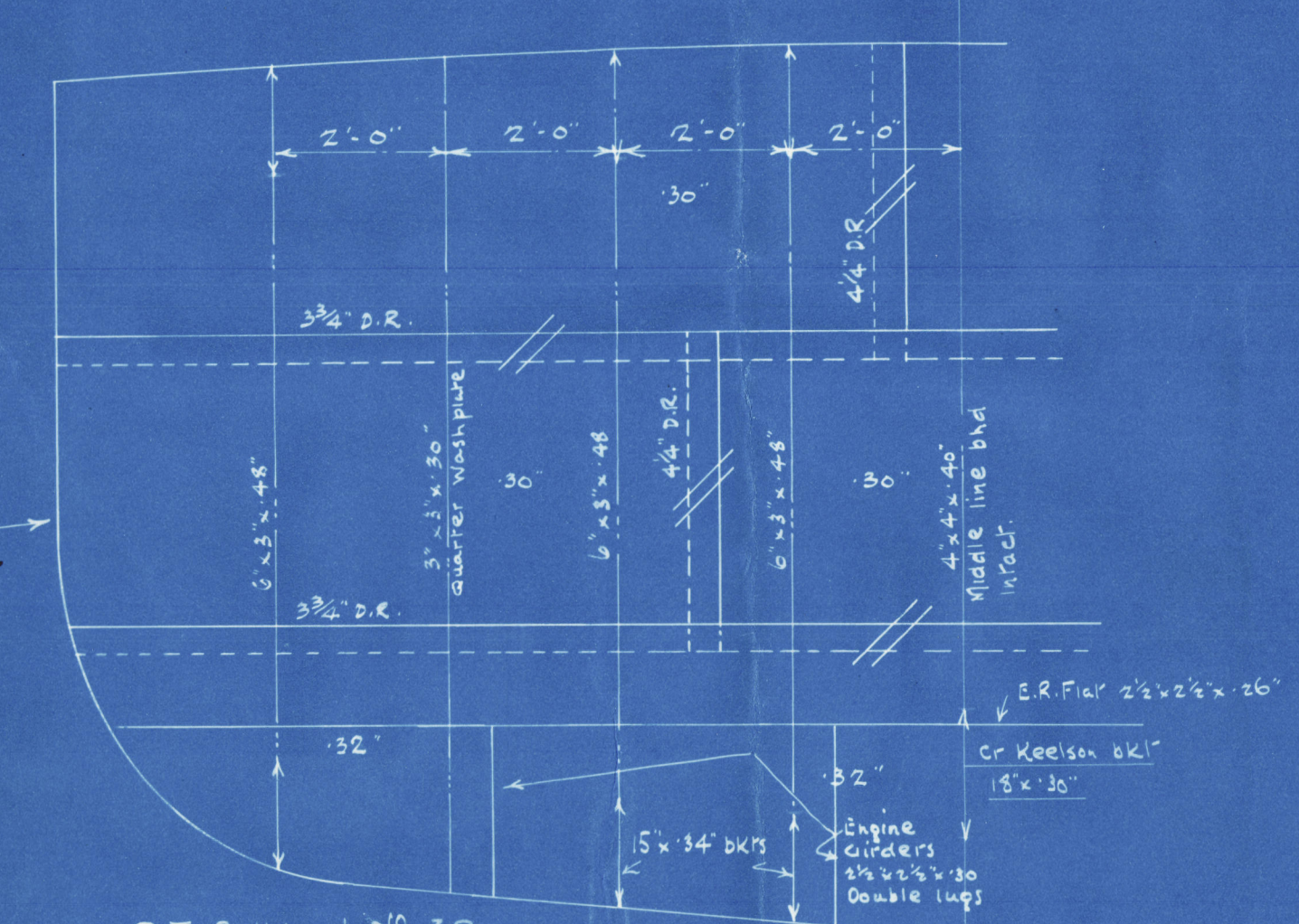
Stringer bar 4"x4"x30" in way of Oil Fuel Tank.



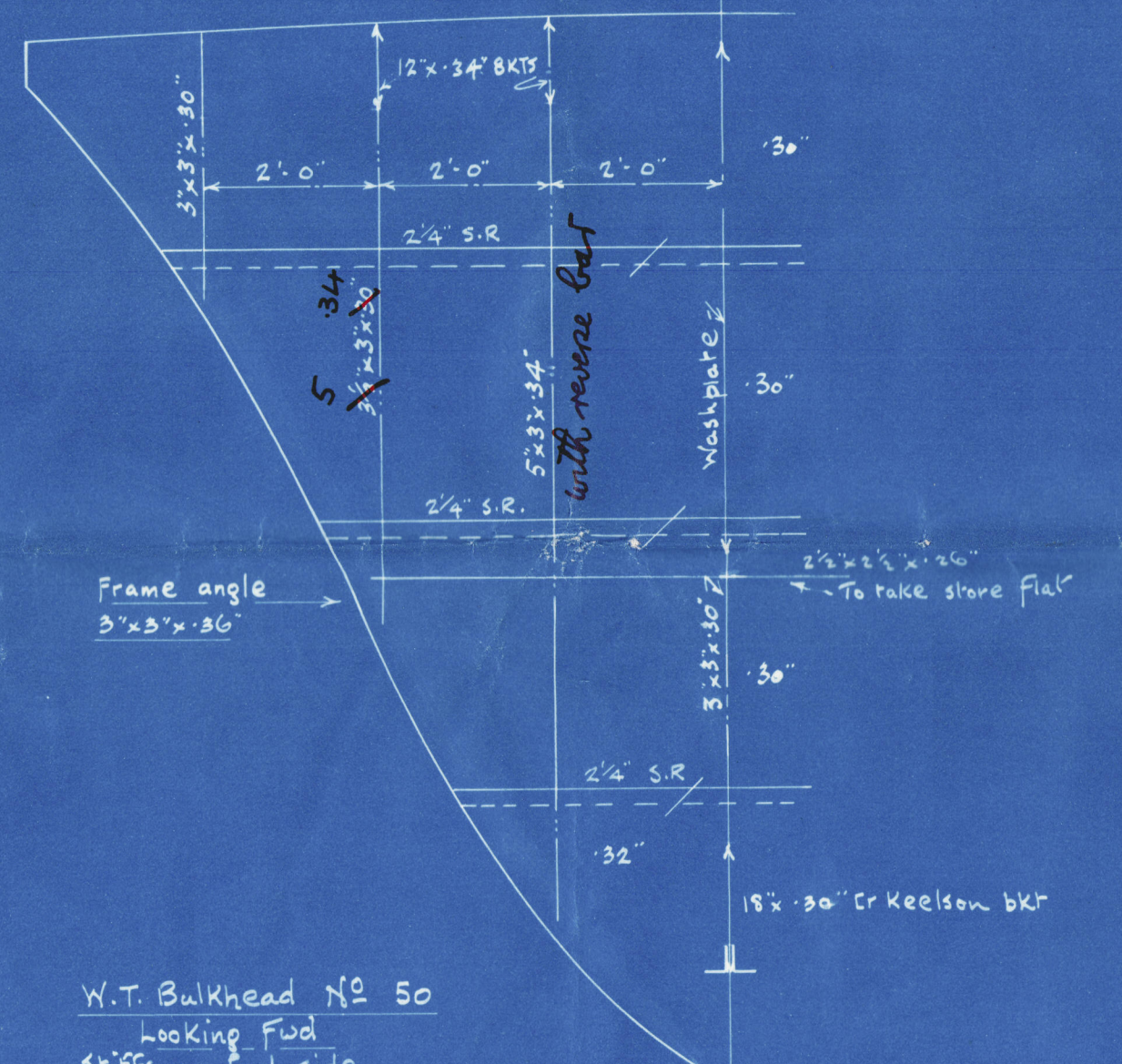
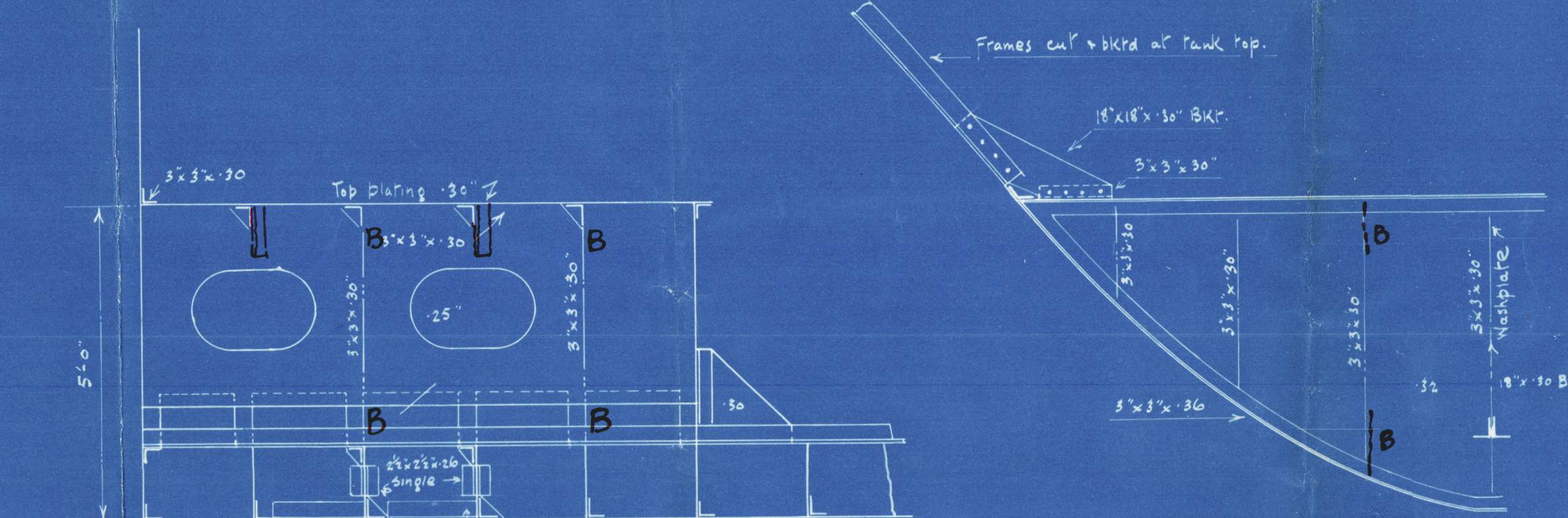
W.T. Bulkhead No 6 looking aft stiffeners on aft side



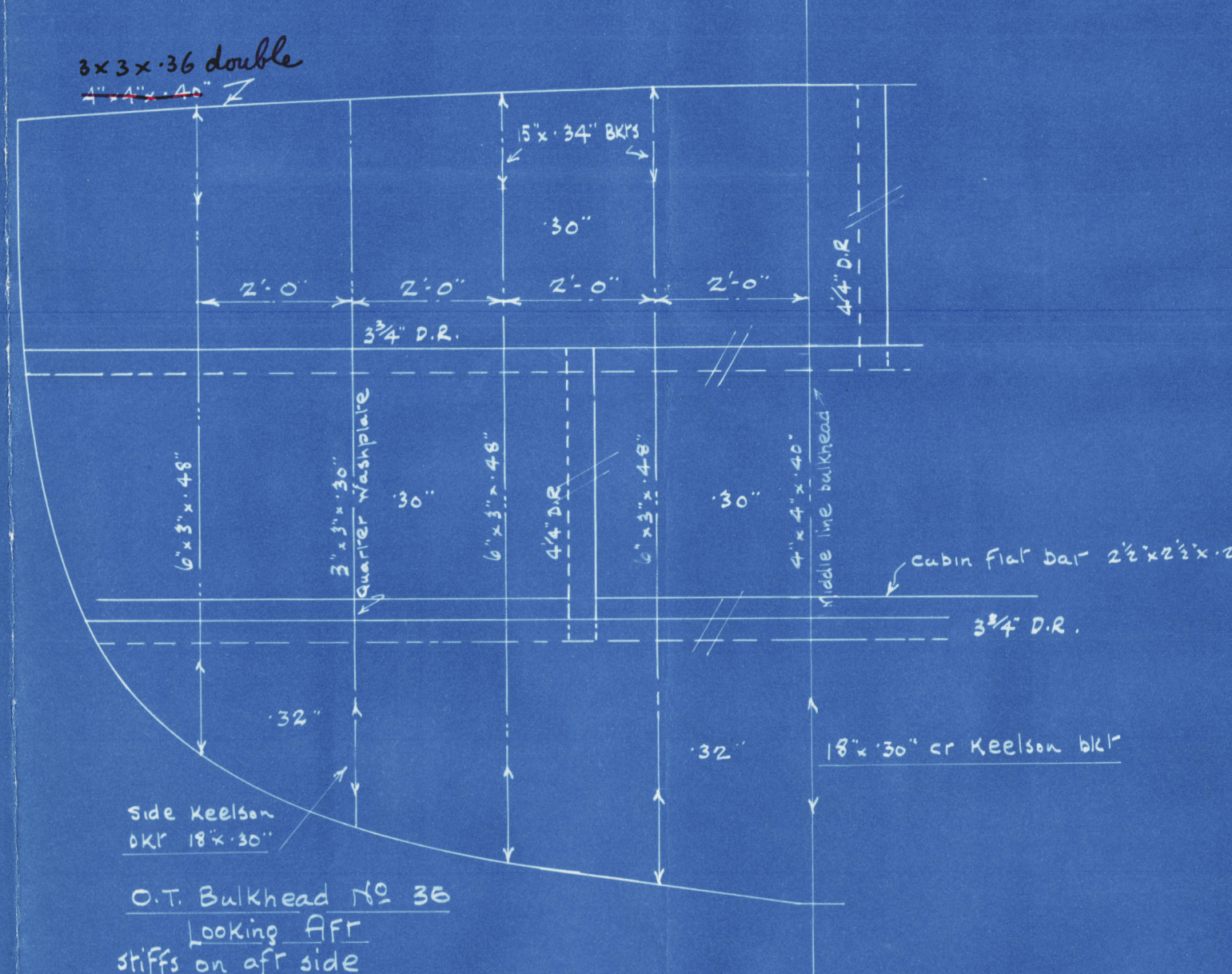
W.T. Bulkhead No 19 looking aft stiffeners on aft side



O.T. Bulkhead No 32 looking forward stiffeners on fore side



W.T. Bulkhead No 50 looking forward stiffeners on fore side



O.T. Bulkhead No 38 looking forward stiffeners on fore side

W.S. 3.5.27

29.11.27

Profile, Deck & Plan

Motor Log.

J Cruickshank

Nº 448

S. S. Quitador

LIVERPOOL.

Report No. 93065



© 2021

Lloyd's Register
Foundation

005635-005643-0007