

STEEL TWIN SCREW MOTOR TUG NO 448

DETAIL OF STERNPOST AND RUDDER

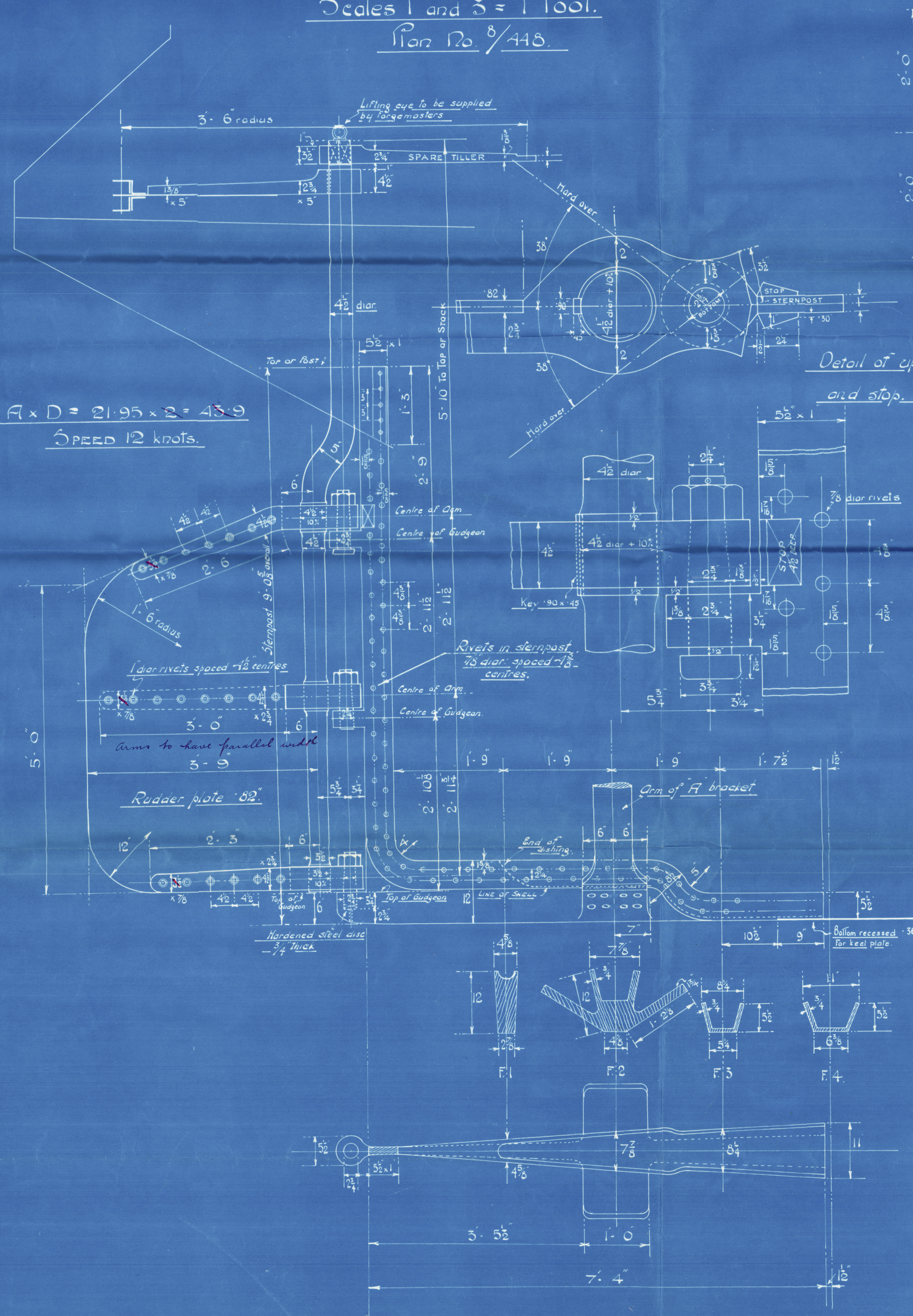
Sternpost of Cast Steel

Rudder frame and tiller Forged Iron

To Lloyd's tests

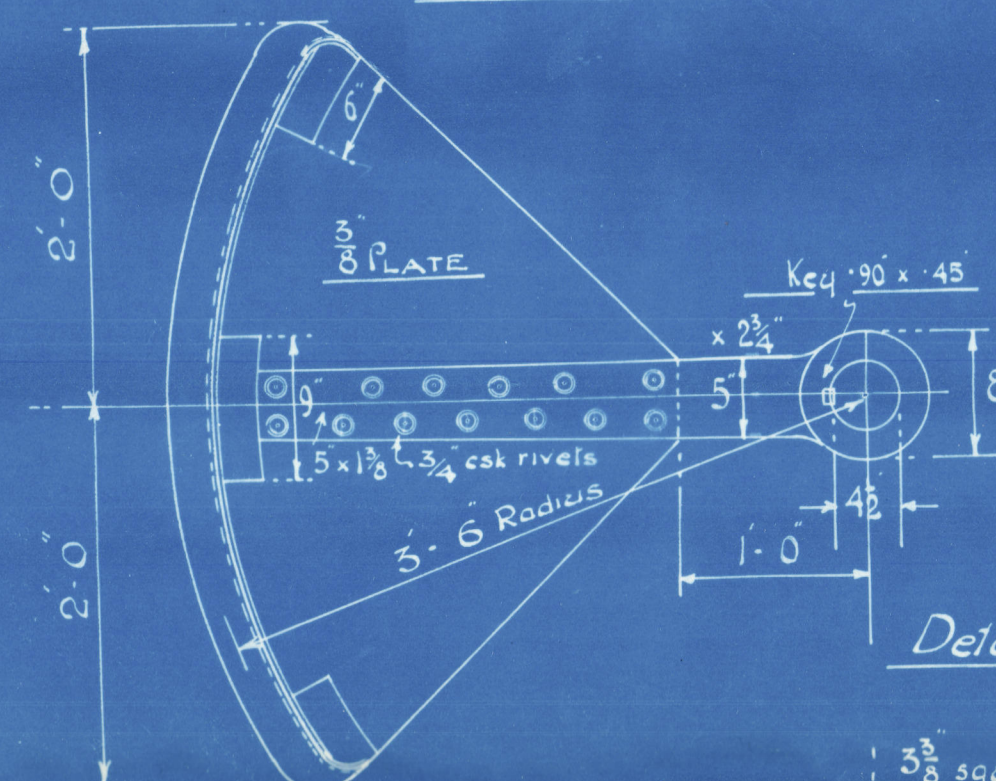
Scales 1" and 3" = 1 Foot.

Plan No. 8/448.

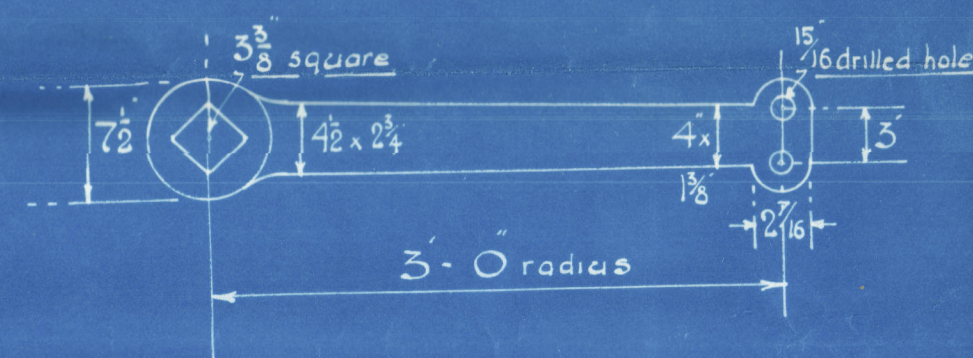


$A \times D = 21.95 \times 2 = 43.9$
SPEED 12 KNOTS.

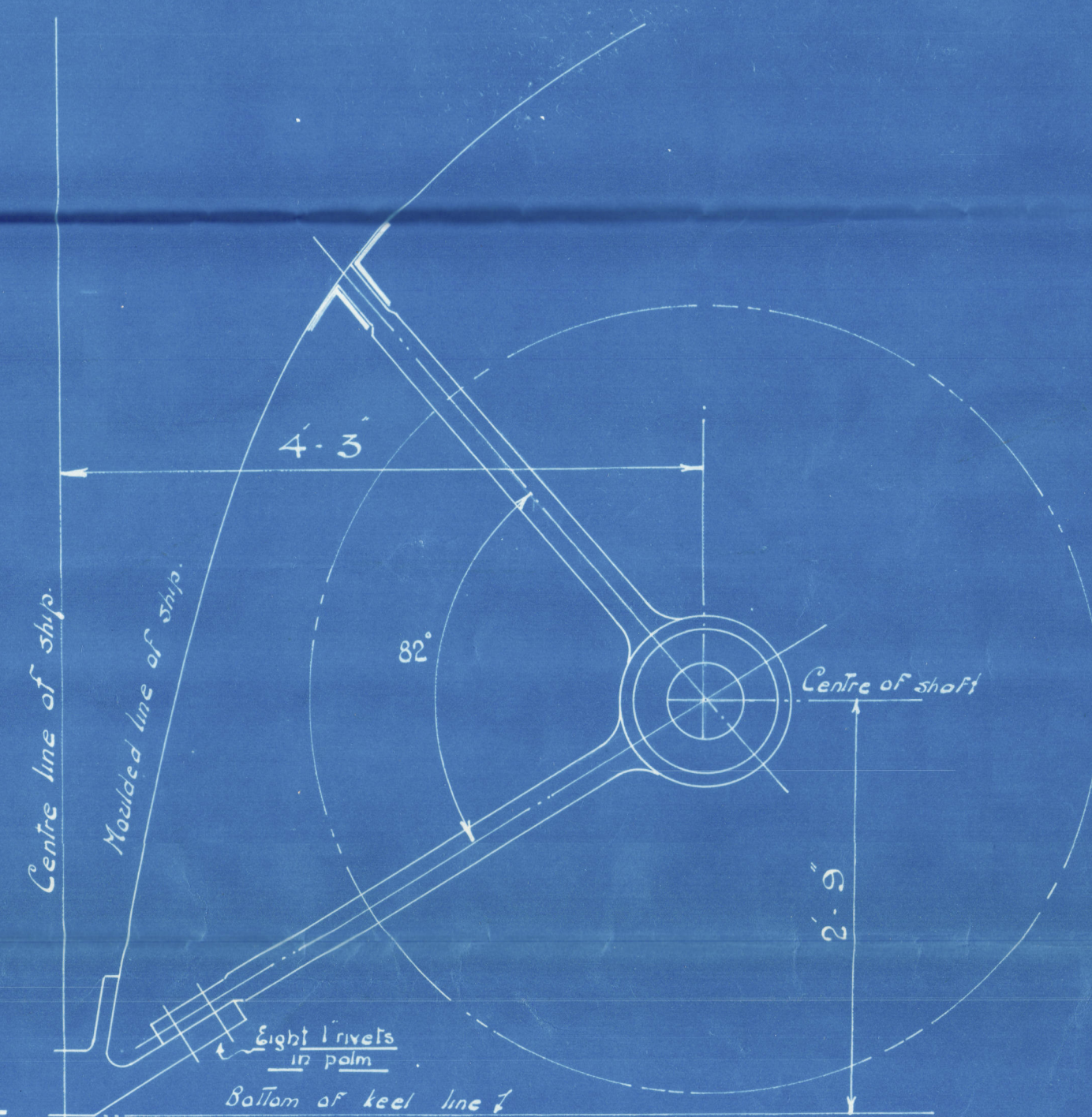
Detail of Quadrant



Detail of spare tiller.



Detail of upper arm of rudder and stop. Scale 3" = 1 foot.



Arrangement of "A" bracket

Scale 1" = 1 foot.

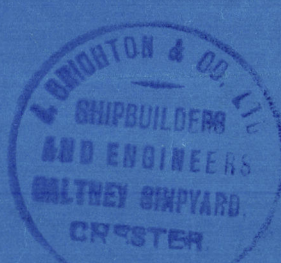
For details see later plans.

Note: 324 H.P. transmitted through each shaft at 275 R.P.M.

Lloyd's Register of Shipping.

27.6.24

27.6.24



Steamport Rudder.

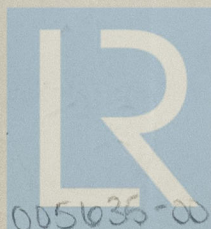
No. 448.

J. Crichton & Co. Ltd.

S. S. Quintados

LIVERPOOL.

Report No. 93065



© 2021

Lloyd's Register
Foundation

005635-005643-0006