

— S. S. Nos 139 & 140. — 161-162.

— RUDDER FRAME. —

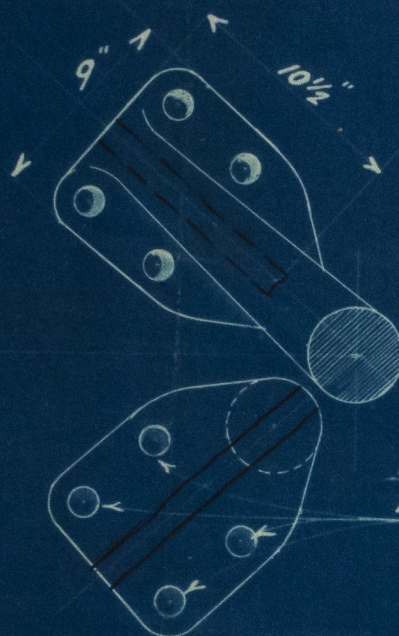
SCALE  $\frac{3}{4}$  IN. = 1 FOOT.

TO PASS LLOYDS.

RUDDER NUMERAL <sup>33</sup> 51-52

Speed under 12 knots  
10

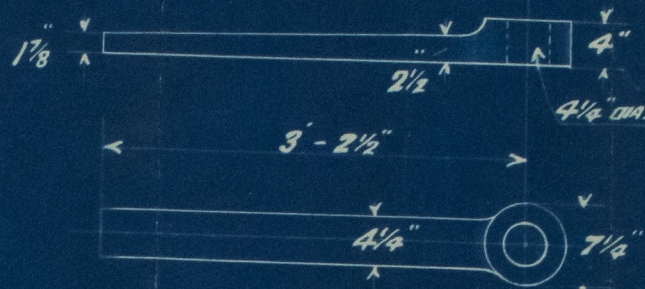
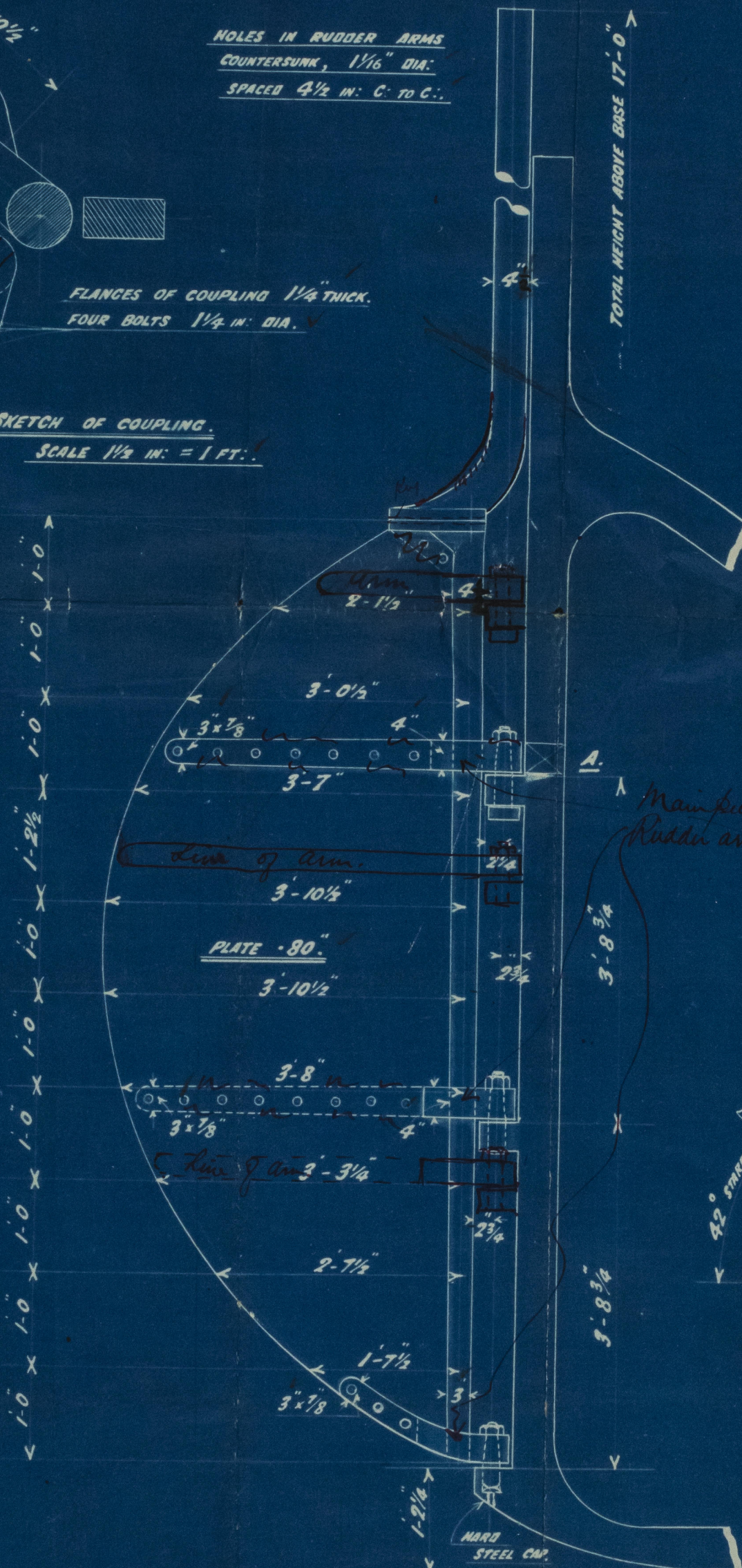
5111  
12-111  
17-213 (16112)



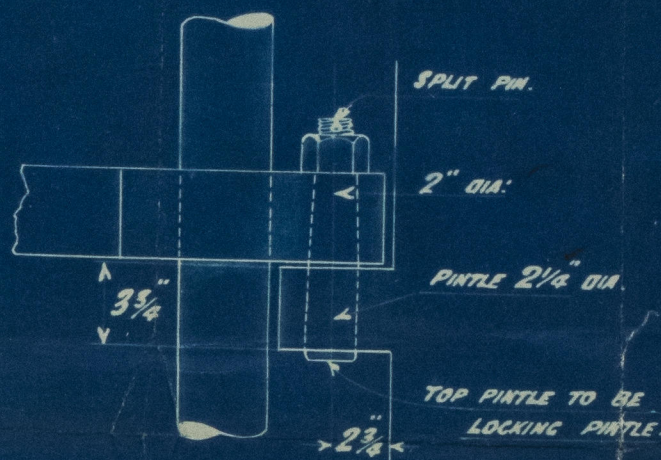
FLANGES OF COUPLING  $\frac{1}{4}$ " THICK.  
FOUR BOLTS  $\frac{1}{4}$ " DIA.

SKETCH OF COUPLING.  
SCALE  $\frac{1}{2}$  IN. = 1 FT.

HOLES IN RUDDER ARMS  
COUNTERSUNK,  $\frac{1}{16}$ " DIA.  
SPACED  $4\frac{1}{2}$ " IN. C. TO C.



SKETCH OF QUADRANT TILLER.  
SCALE  $\frac{3}{4}$  IN. = 1 FT.

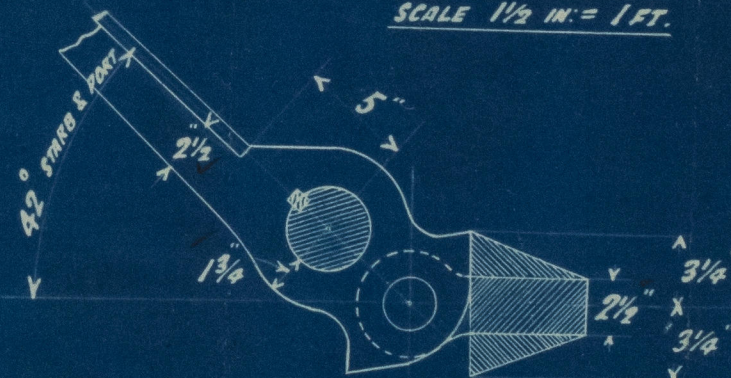


SKETCH OF PINTLE.  
SCALE  $\frac{1}{2}$  IN. = 1 FT.

Main piece increased in diameter to admit of efficient keyway being cut  
1 1/4" 1/2" CLEARANCE.



PLAN OF ARM AT MAINPIECE.  
SCALE  $\frac{1}{2}$  IN. = 1 FT.



SKETCH OF STOPPER ON STERNFRAME, "A".  
SCALE  $\frac{1}{2}$  IN. = 1 FT.

C.B.  
5-11-11



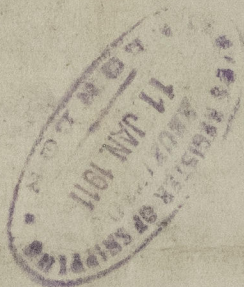
© 2020  
Lloyd's Register  
Foundation



S/S N<sup>o</sup> 13940

Rudder Frame

s/s no 161 + 162



s/s Larrea

Hull Rpt No 23829

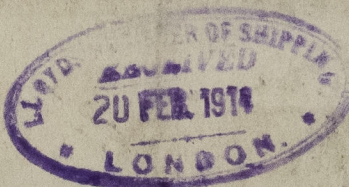
s/s Lamport 23897

s/s Las Heras

Hull Rpt No: 27084

s/s Linniers

Hull Rpt No 27228



© 2020

Lloyd's Register  
Foundation

005585-005601-0122