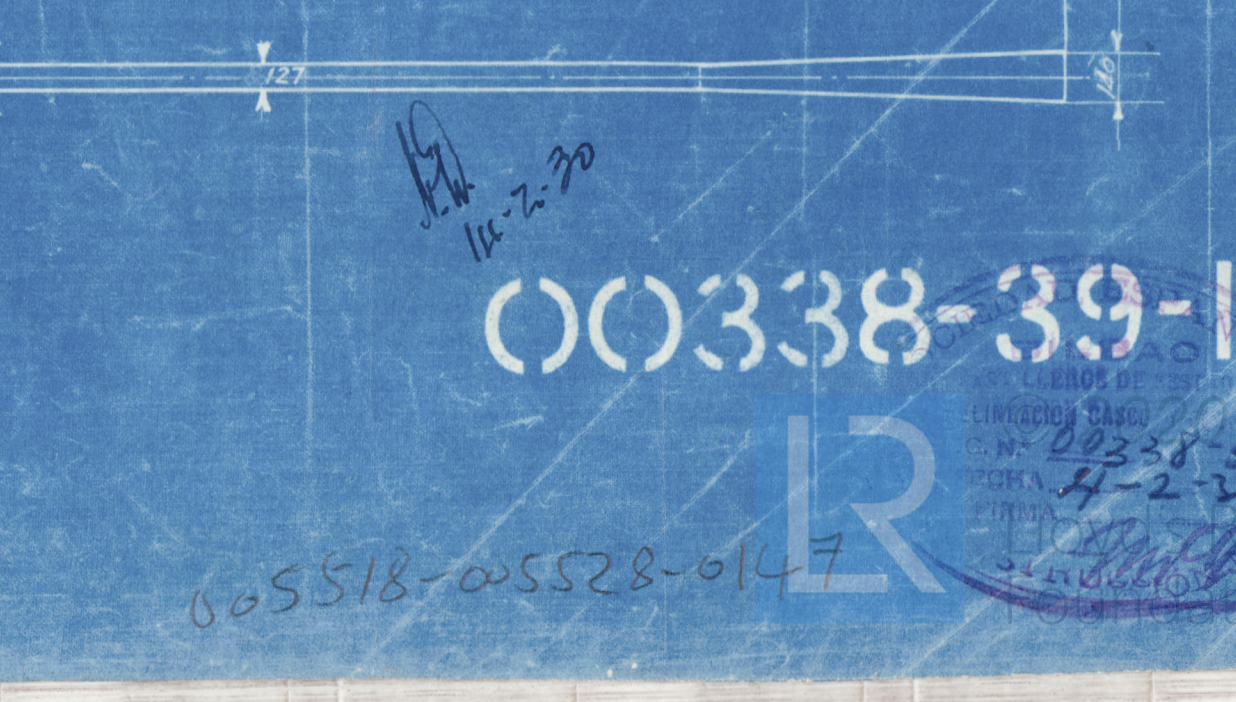
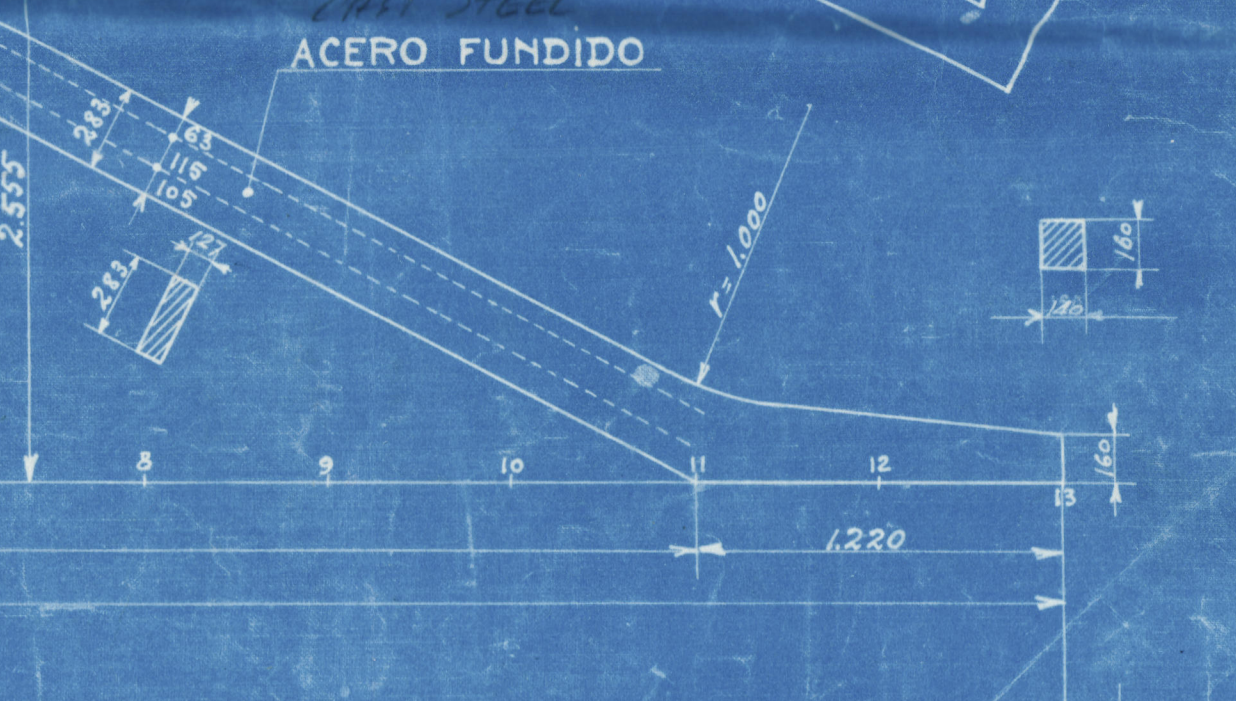
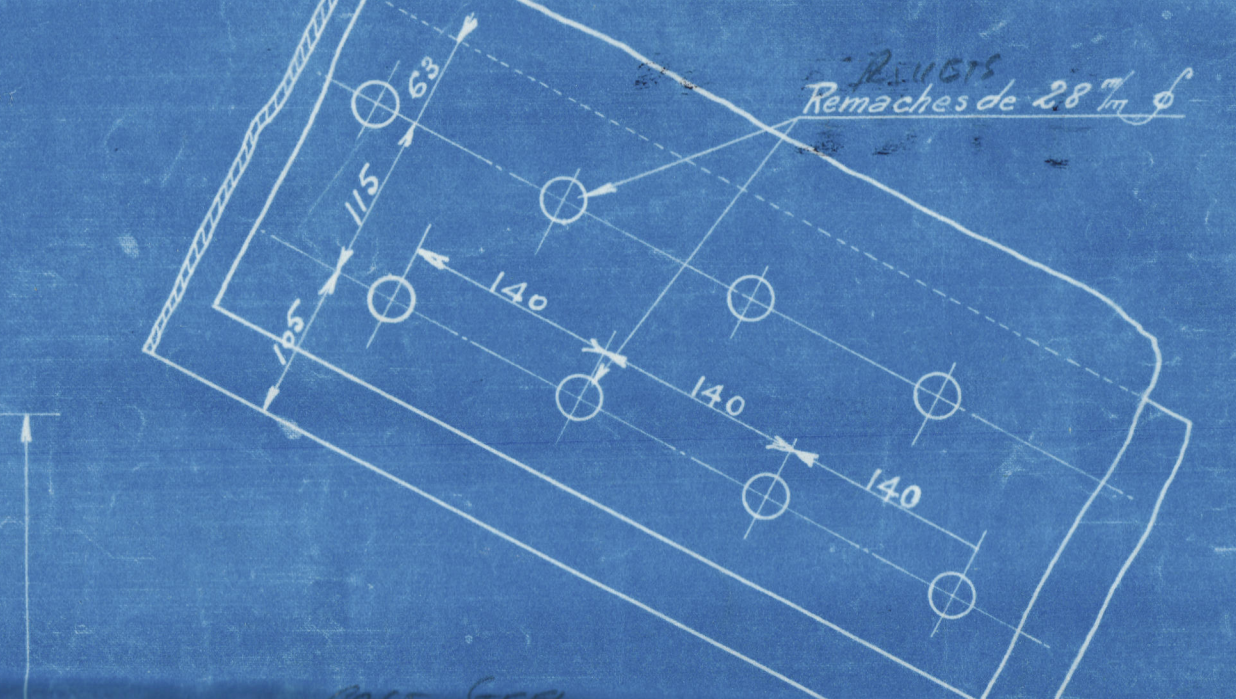
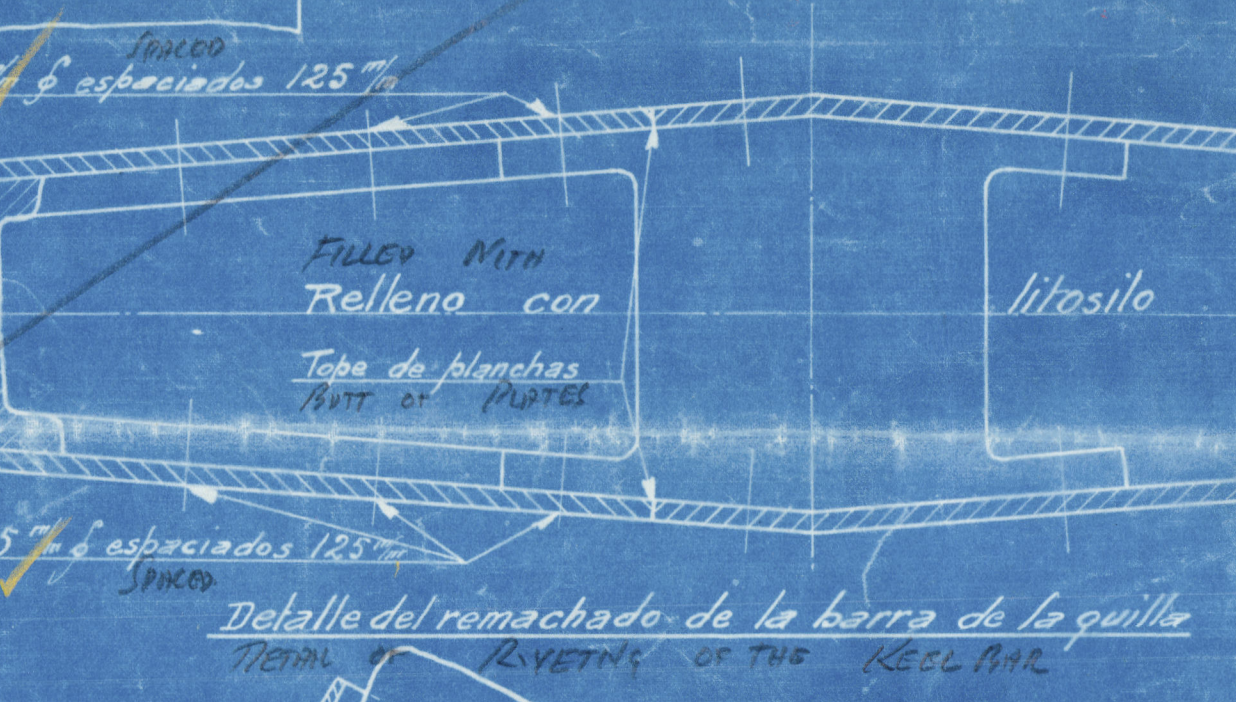
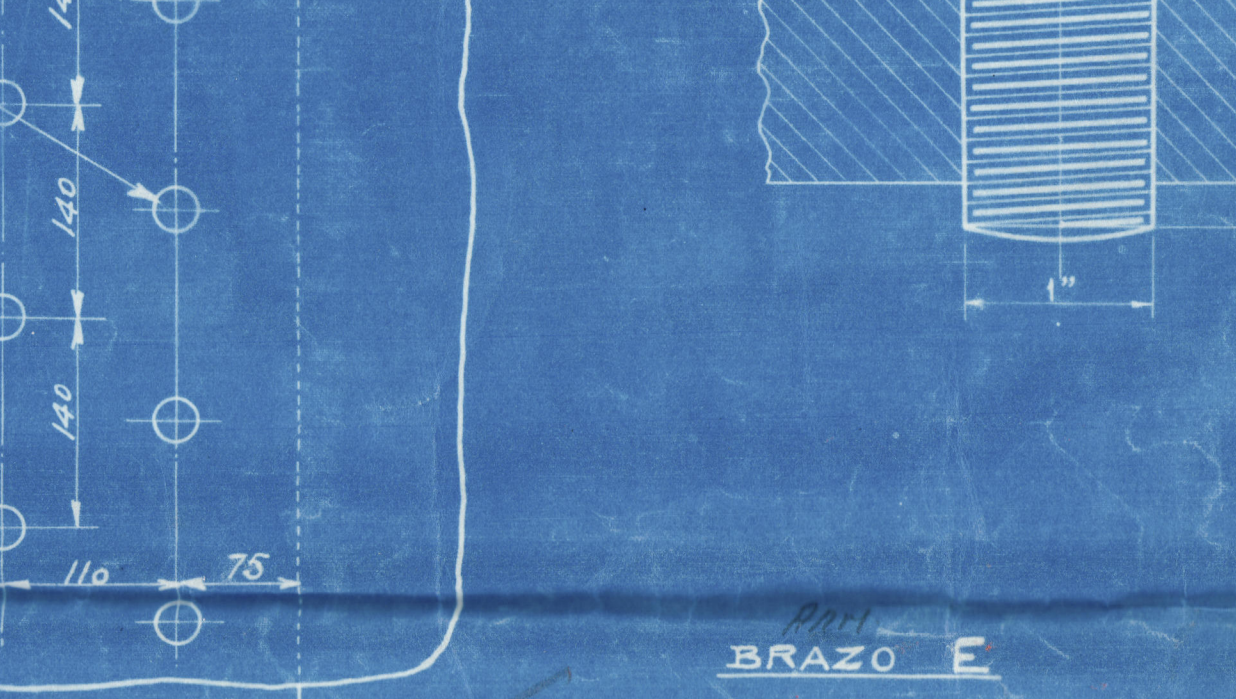
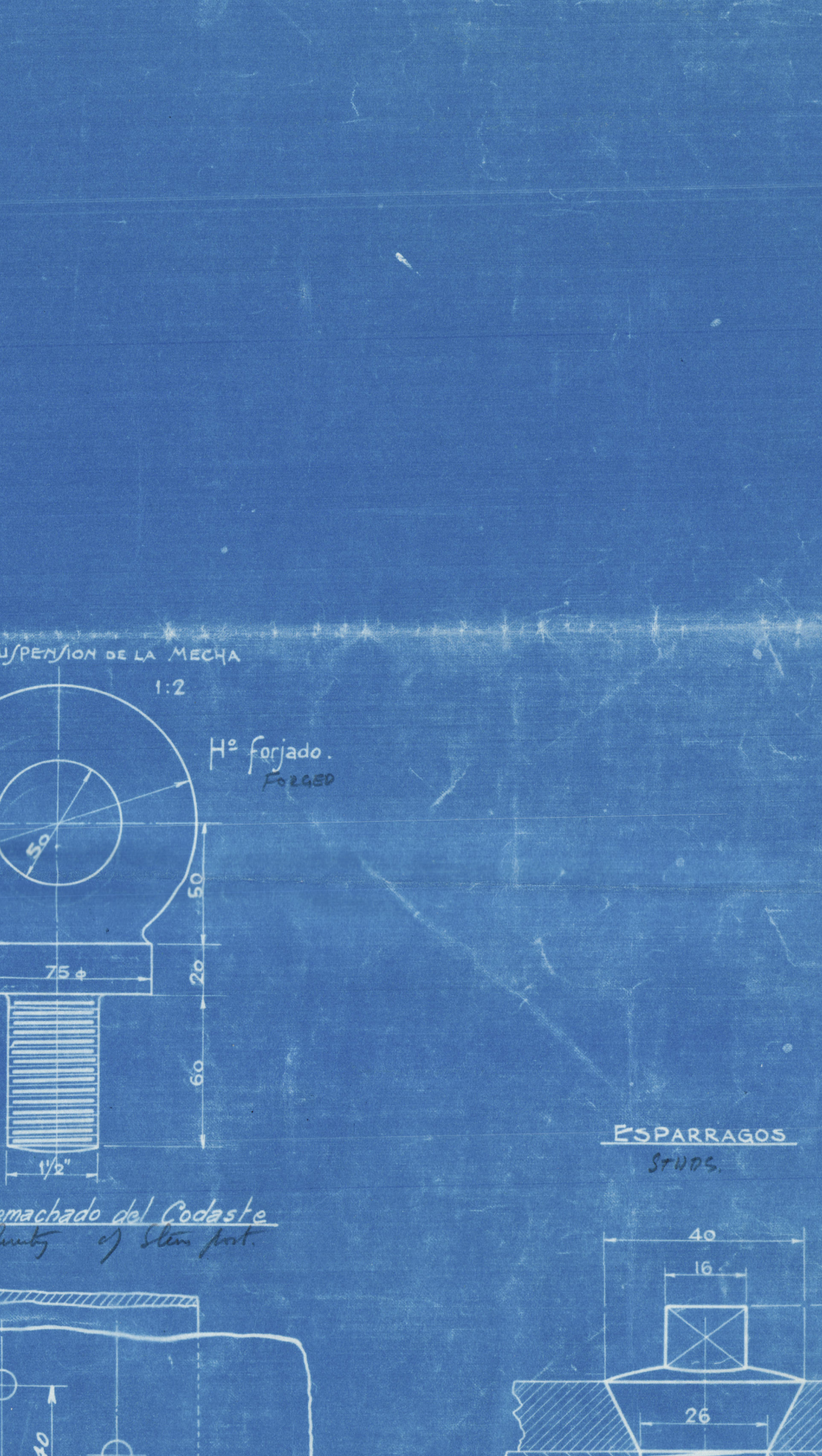
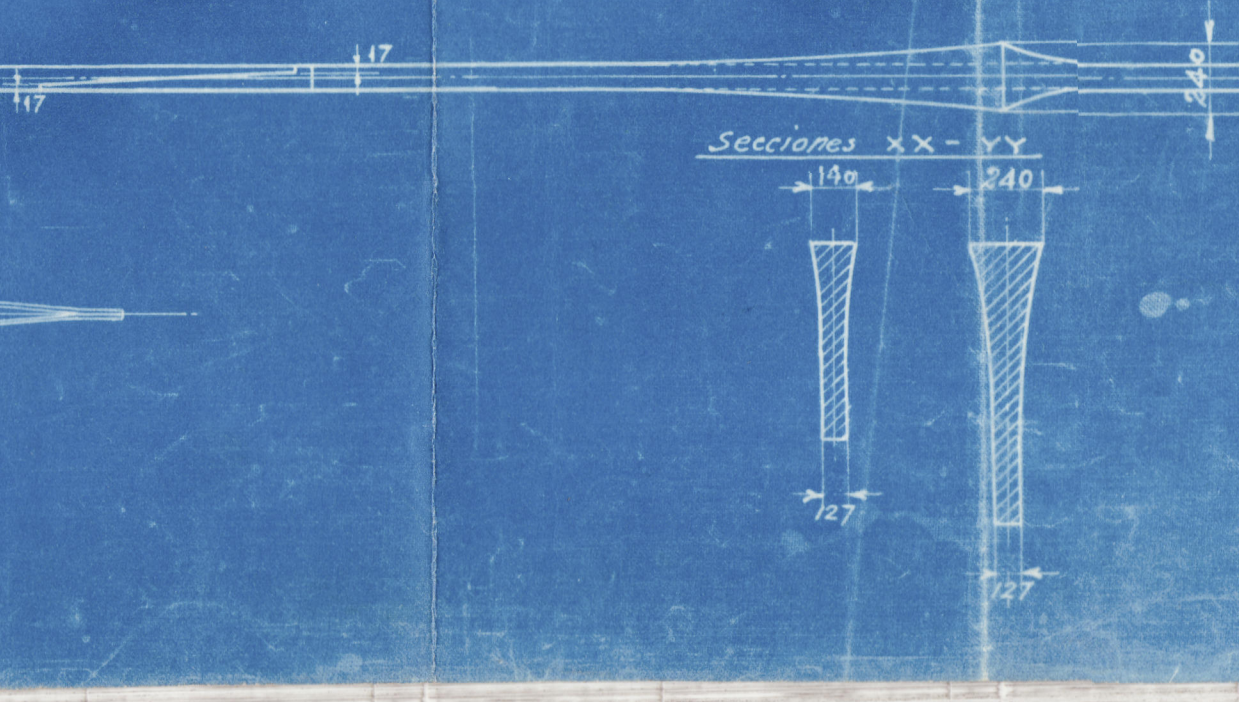
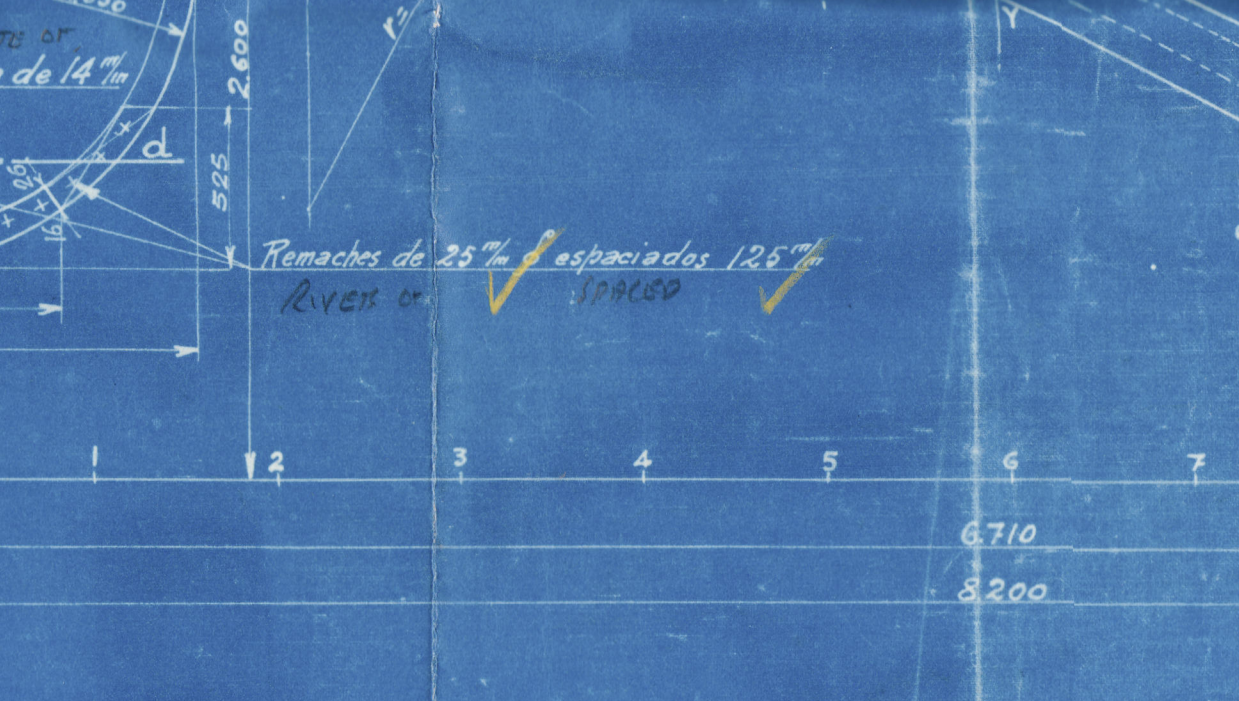
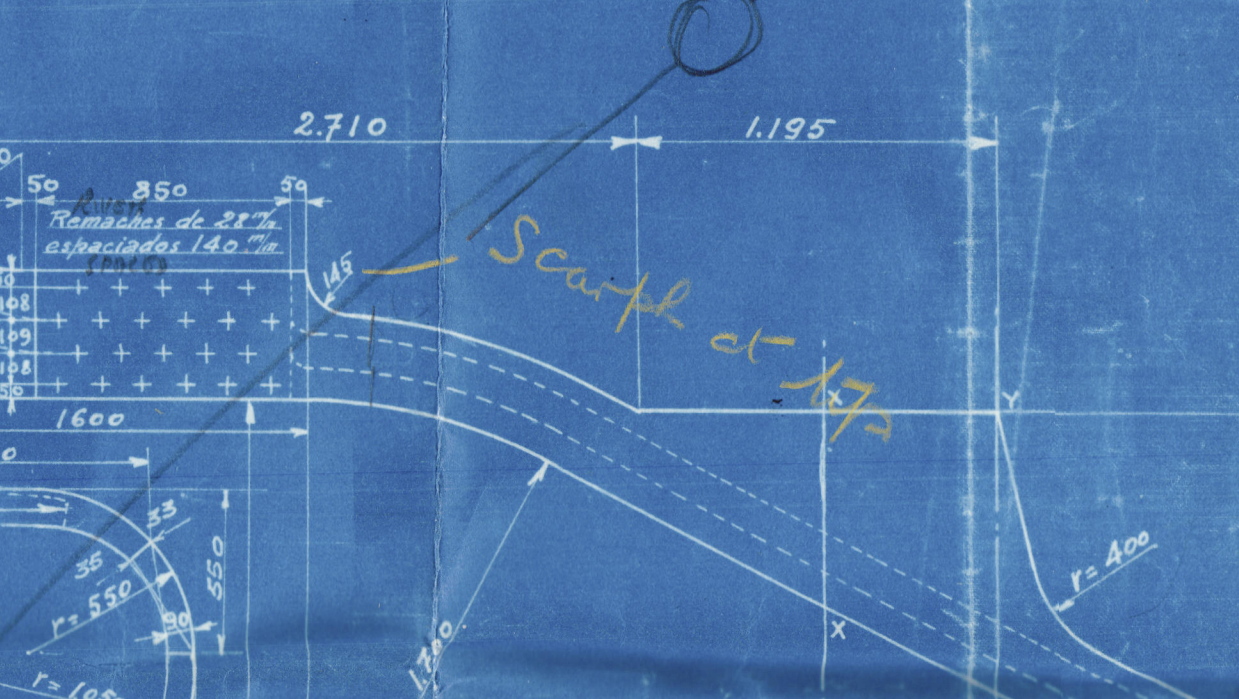
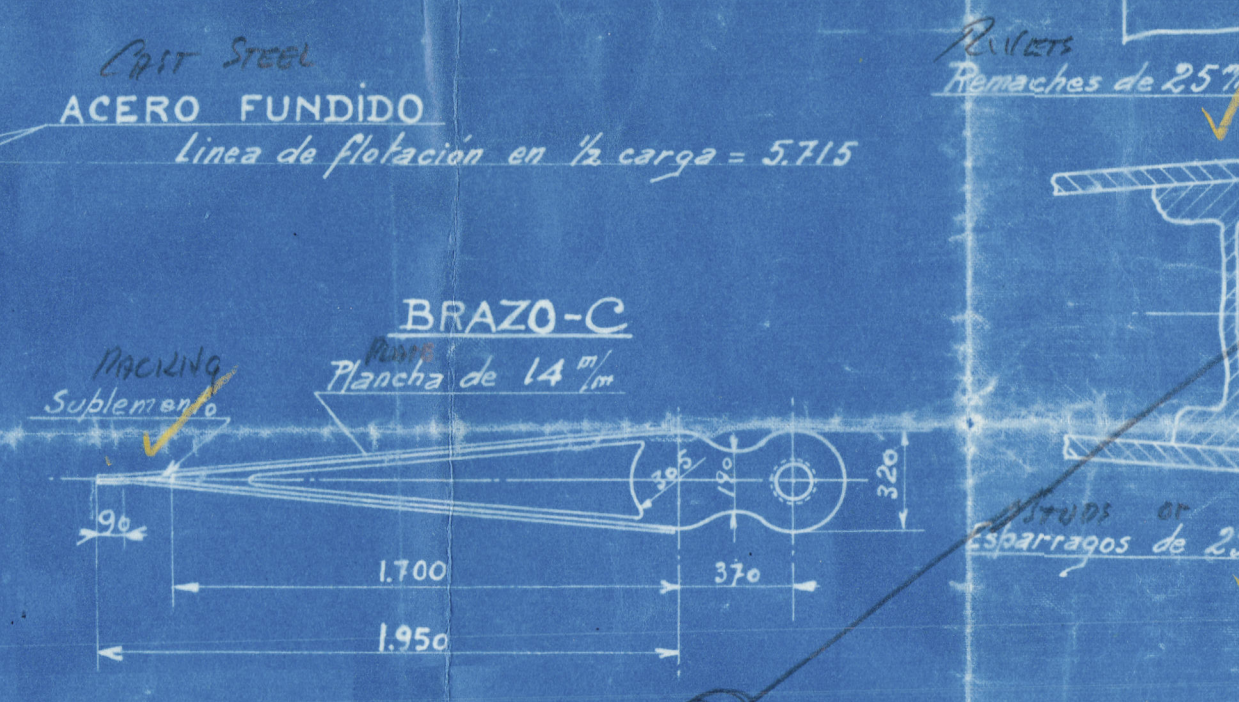
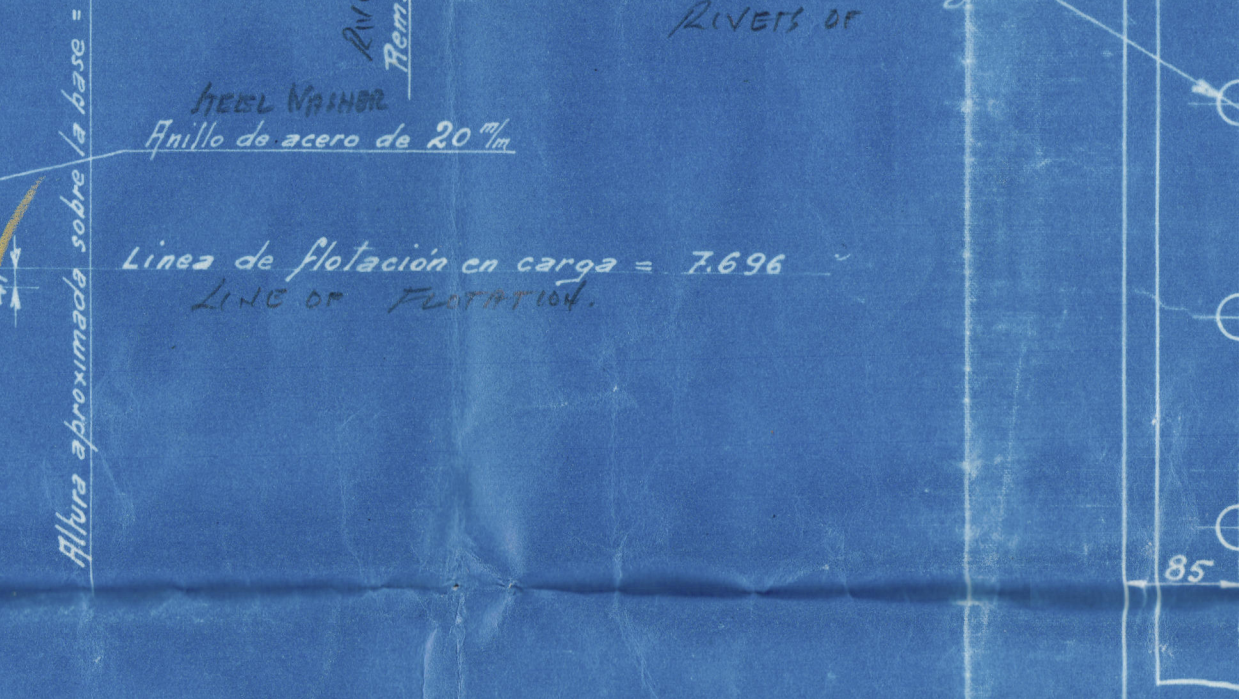
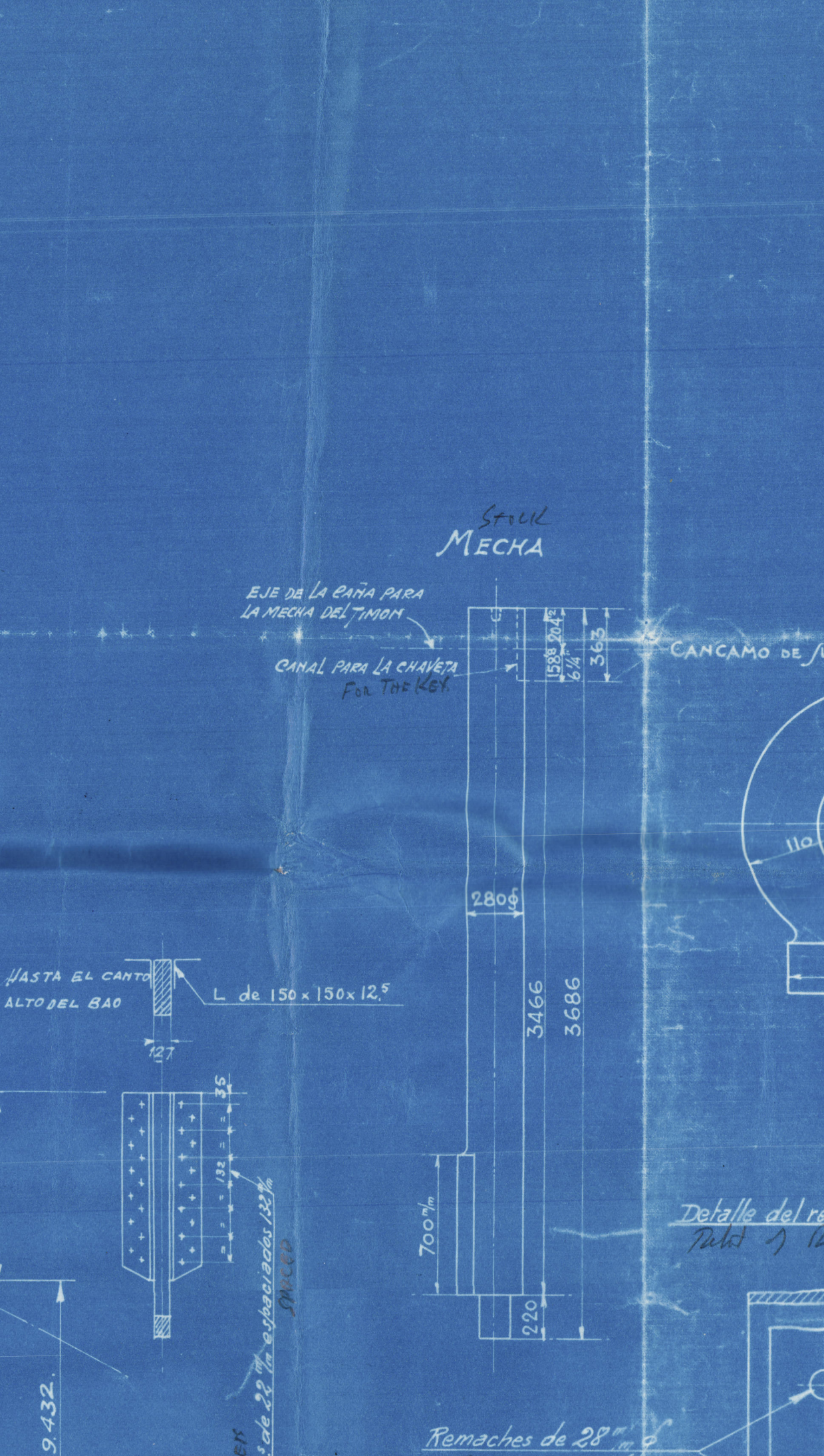
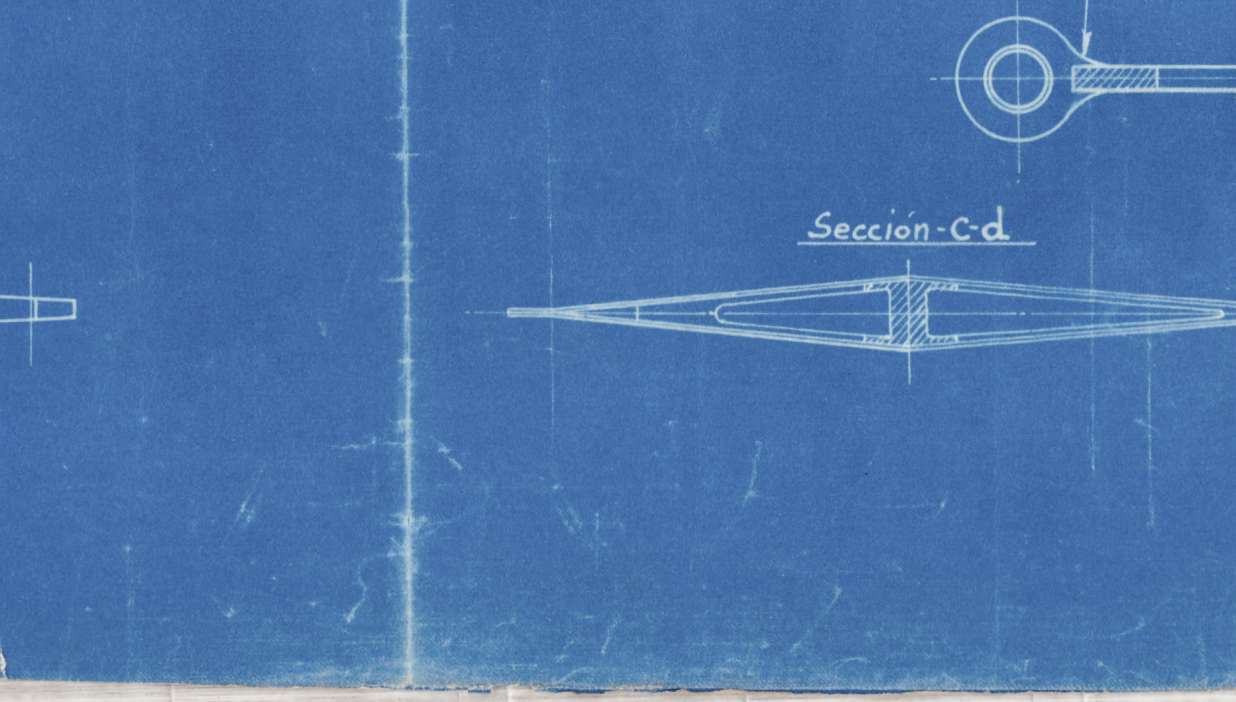
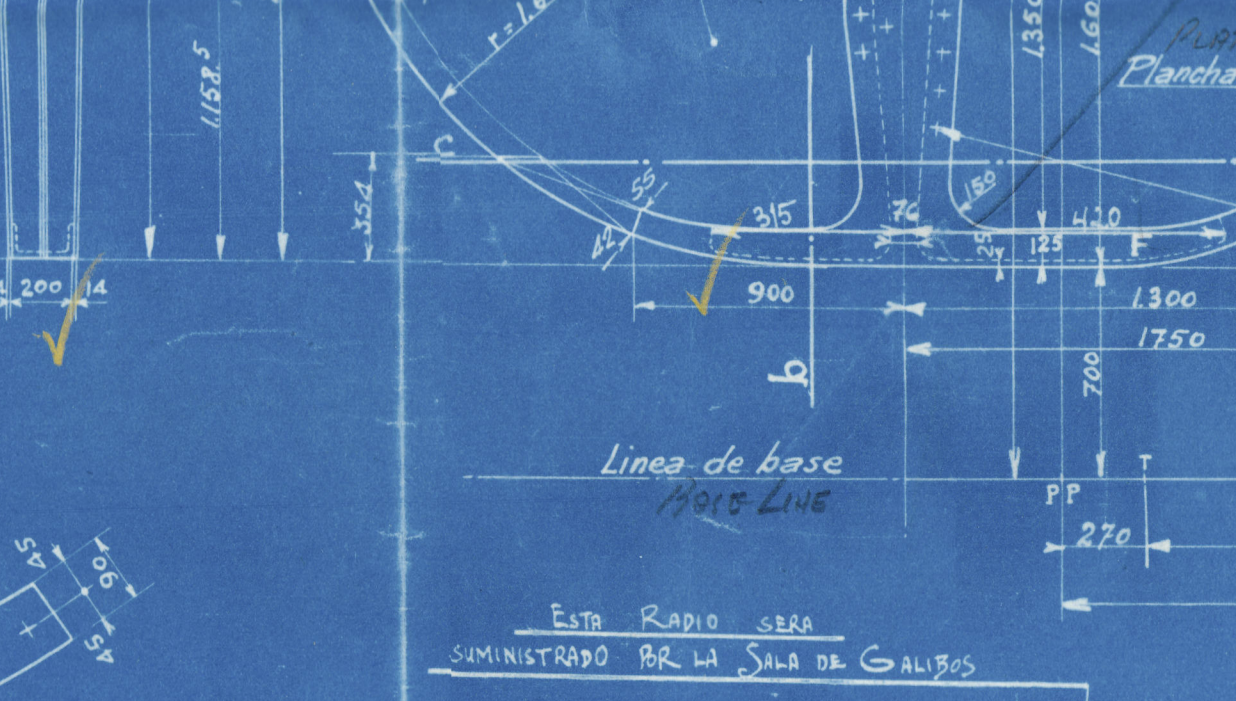
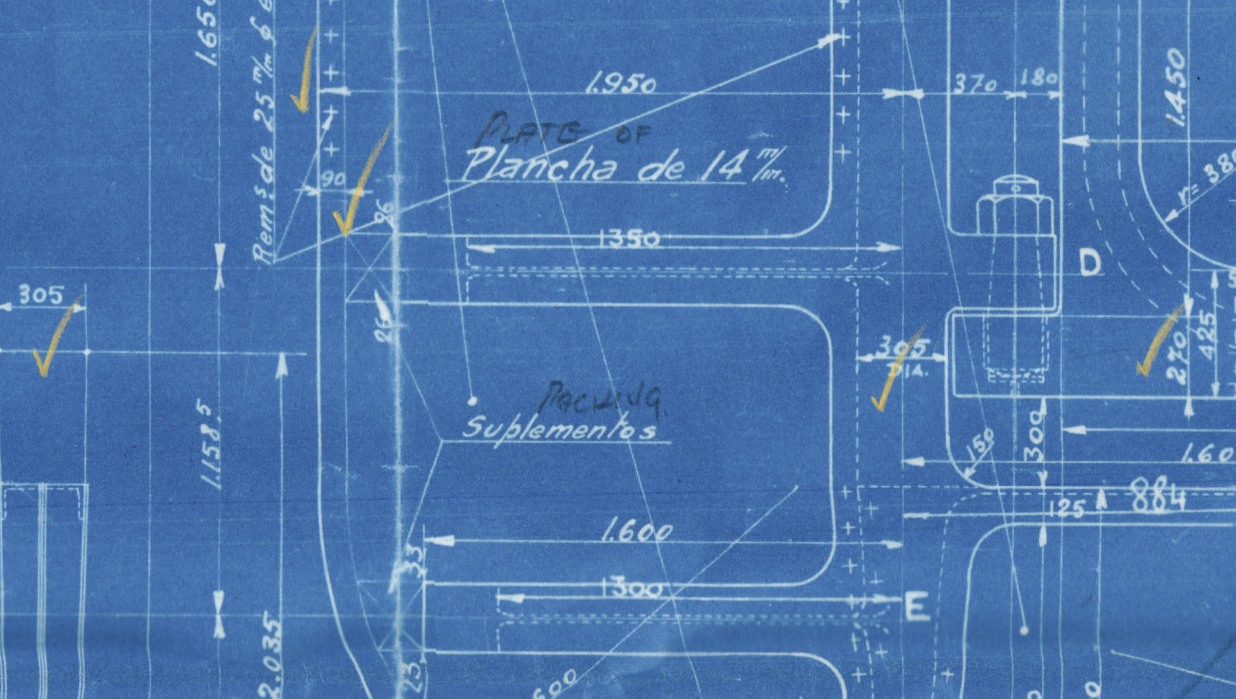
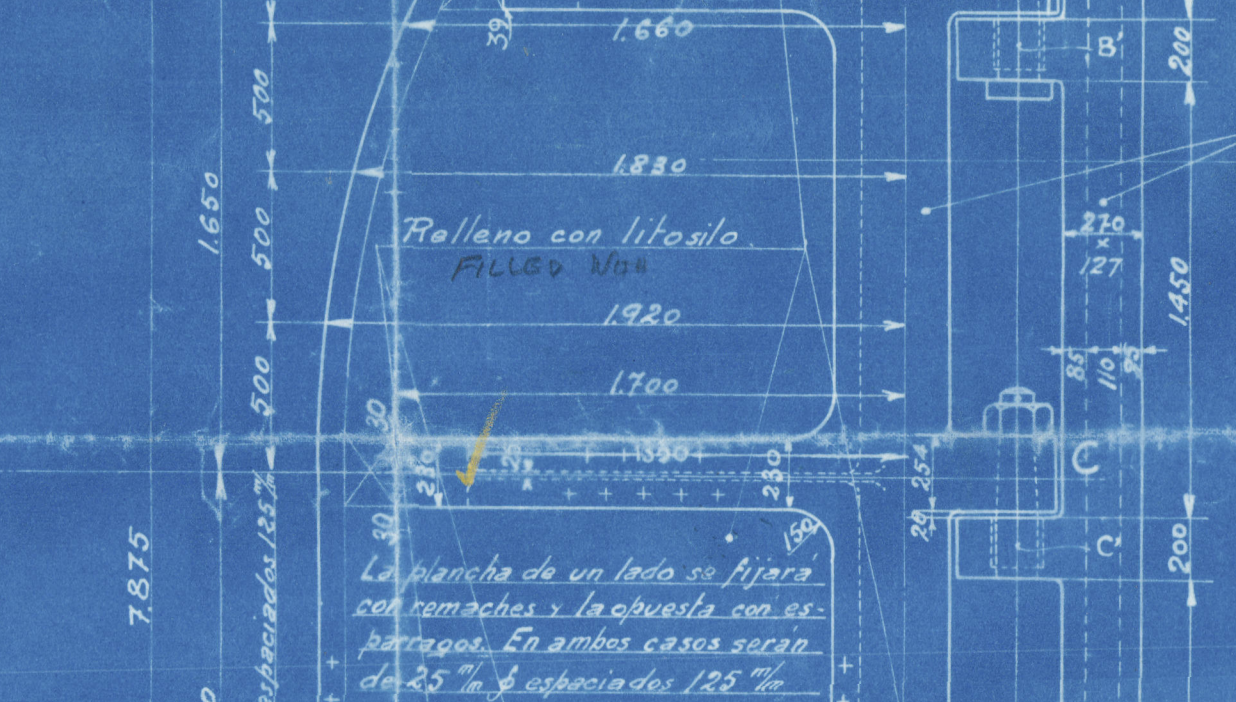
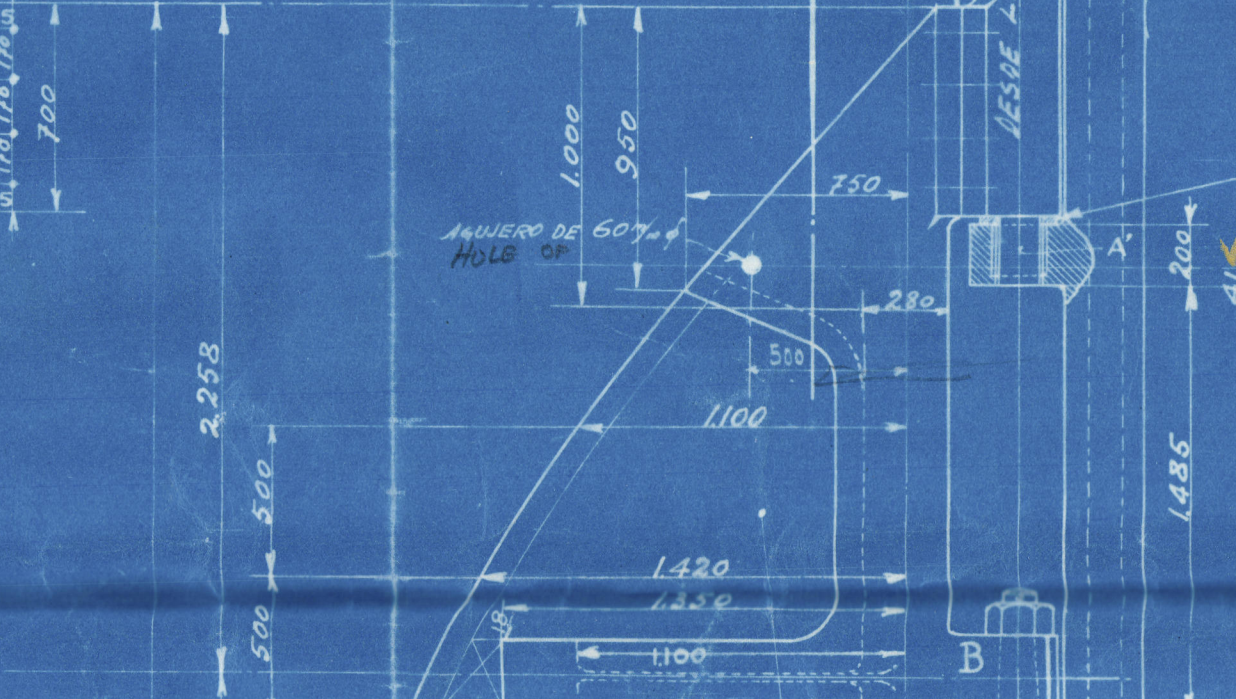
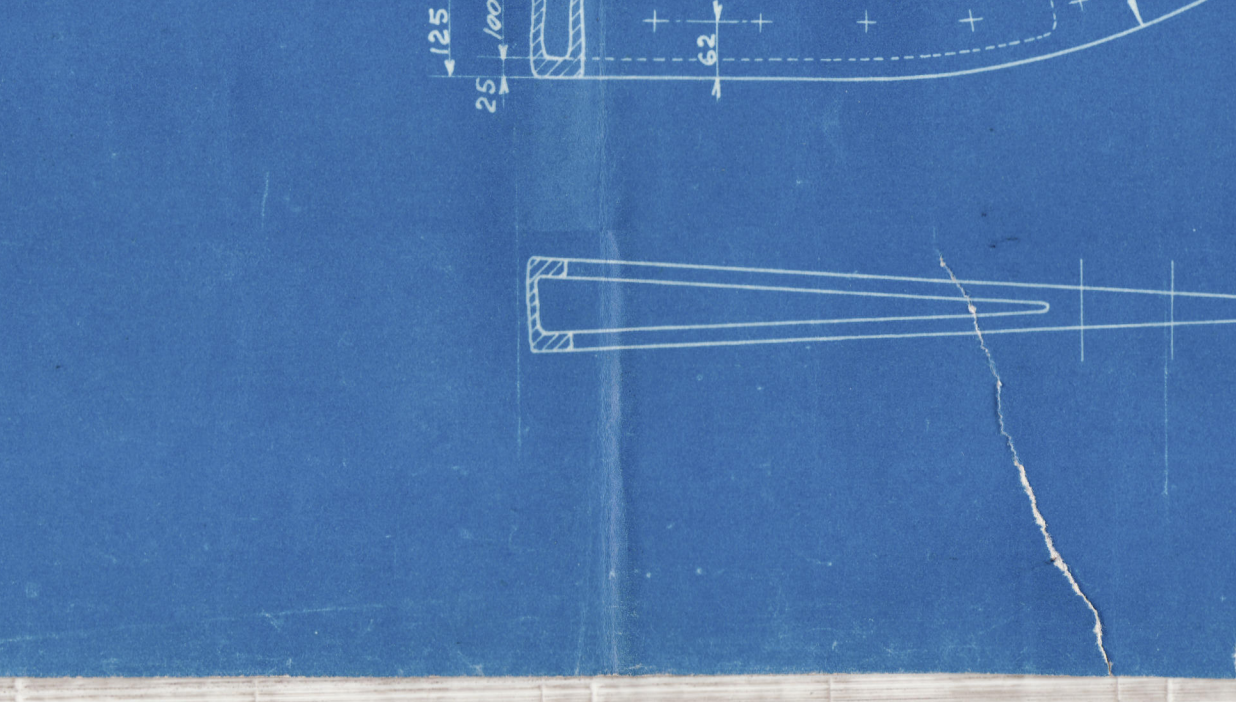
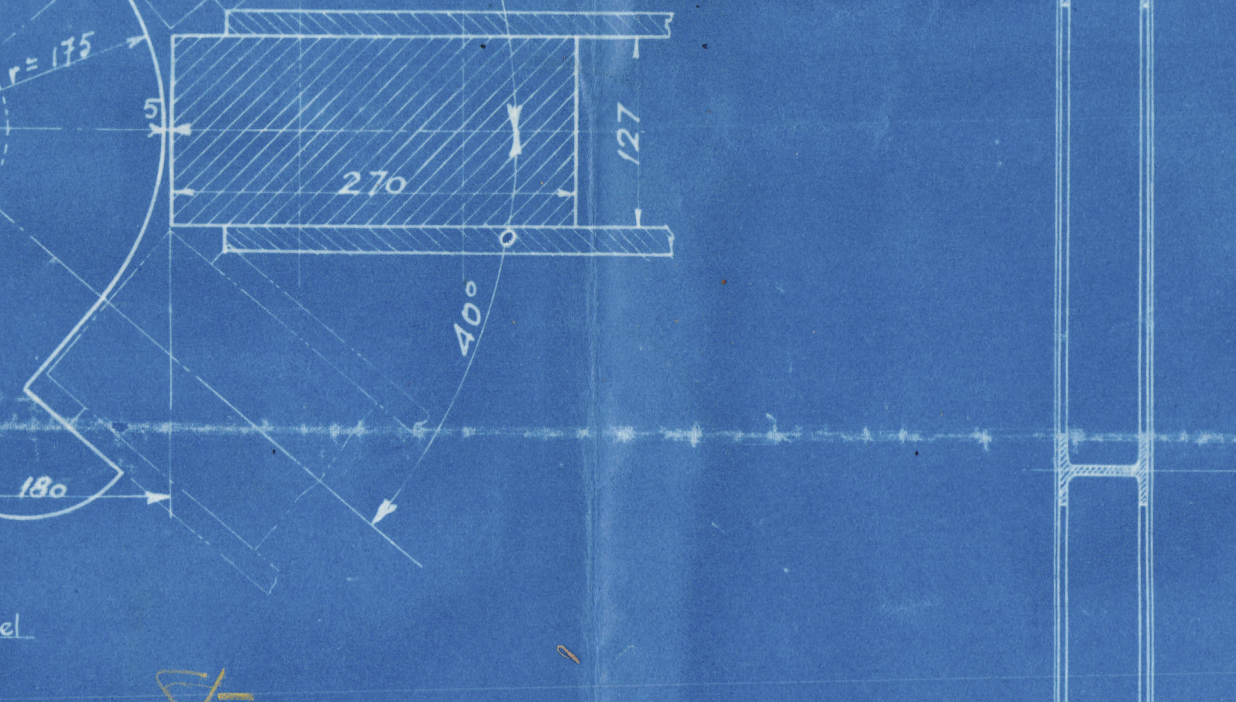
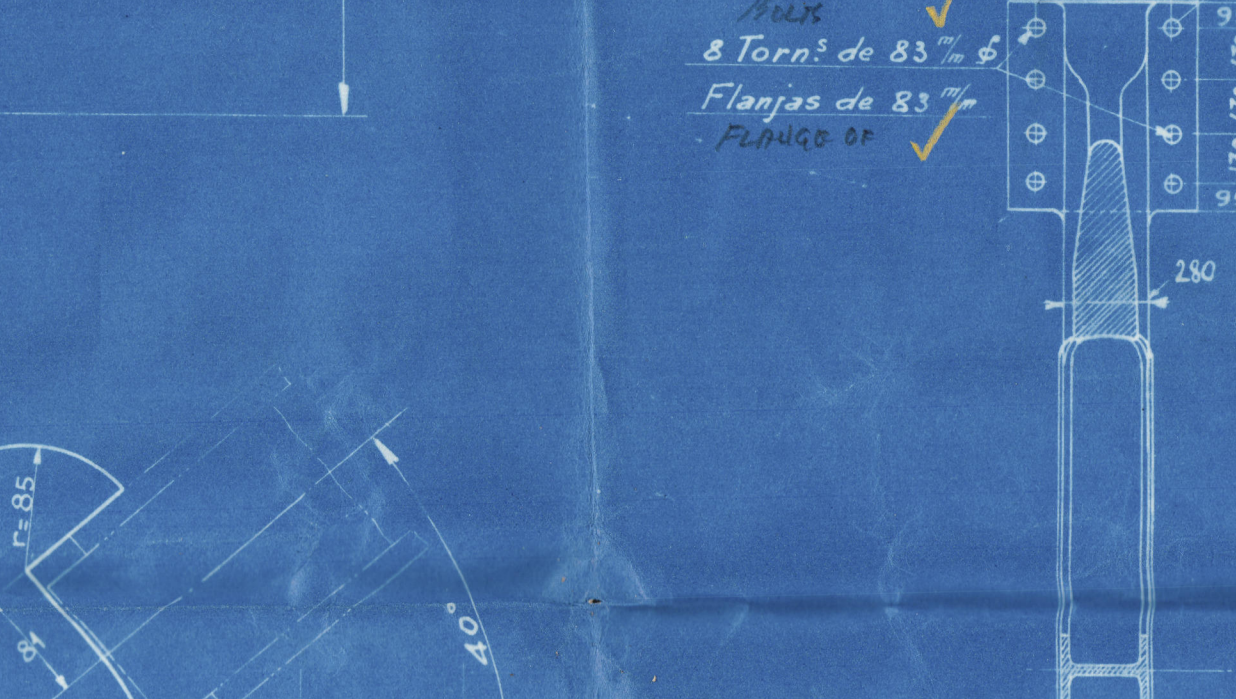
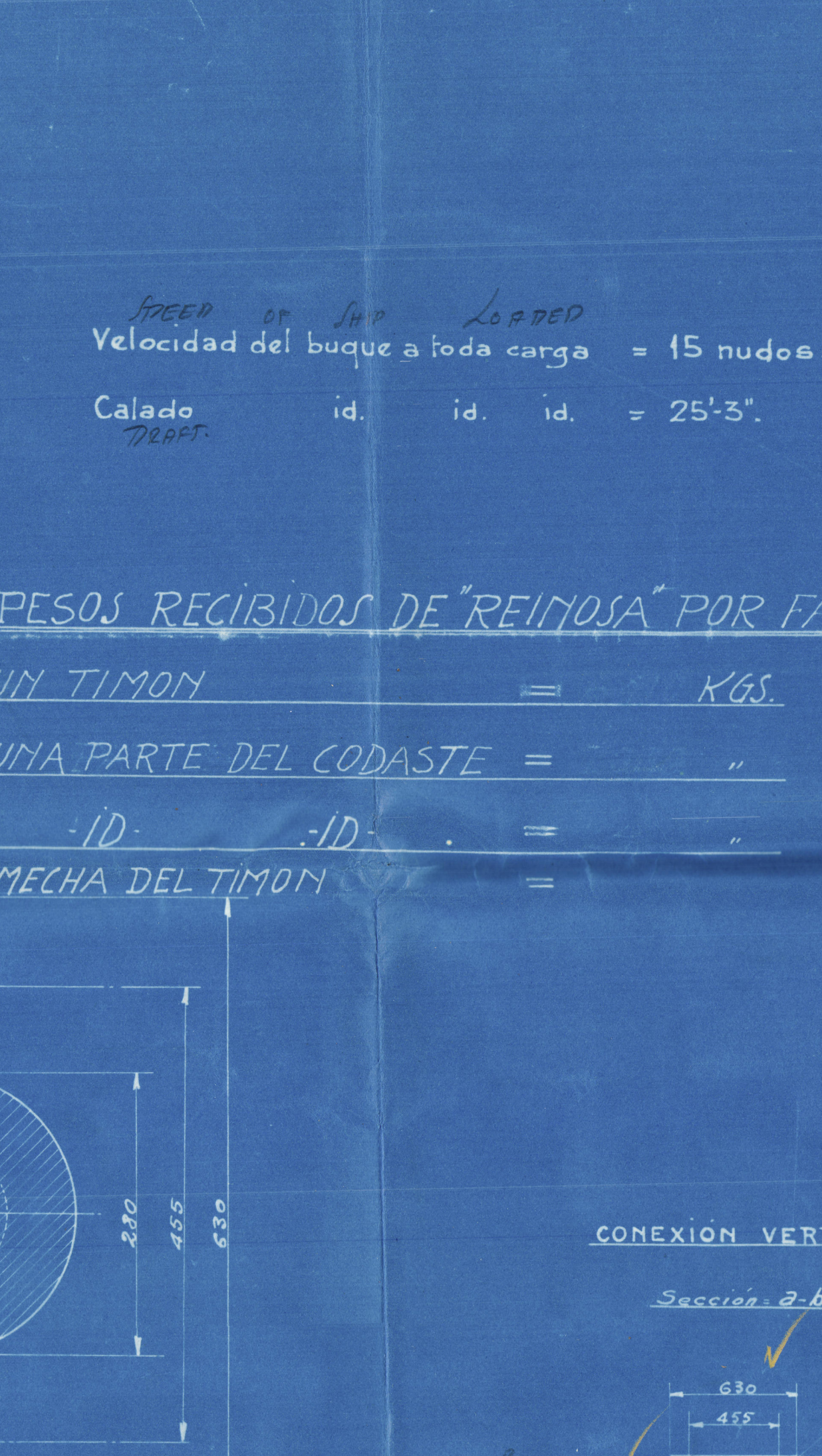
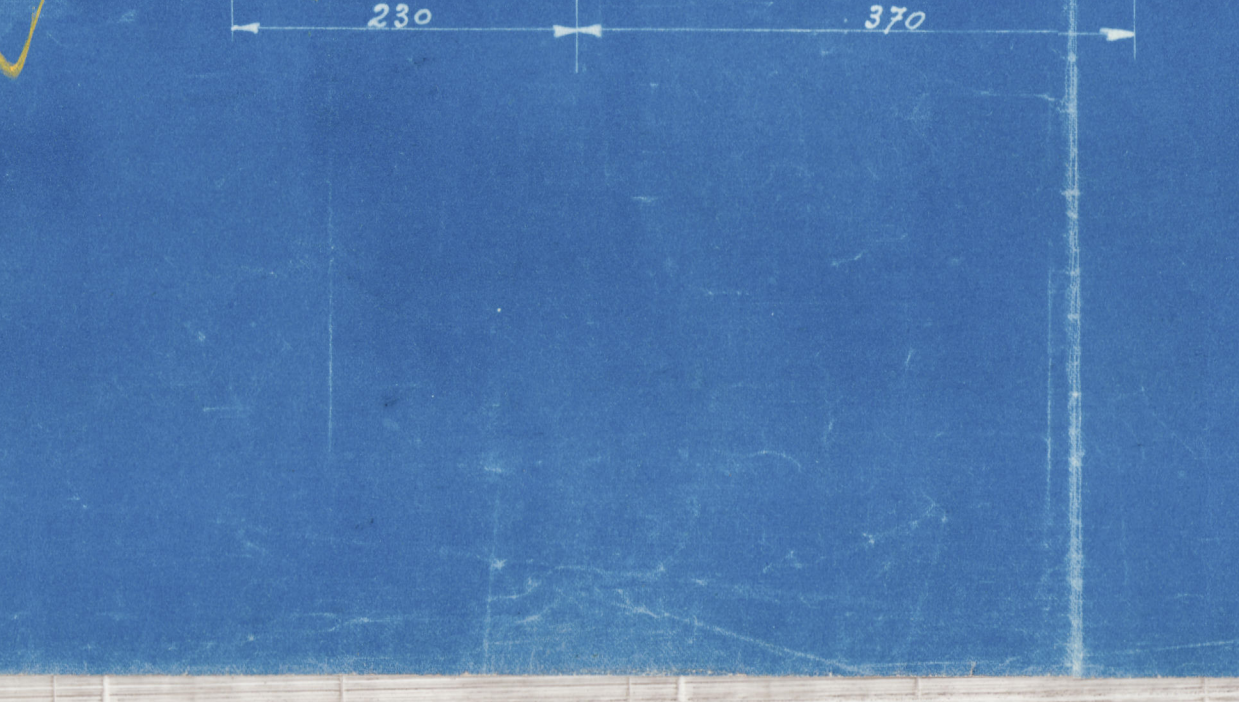
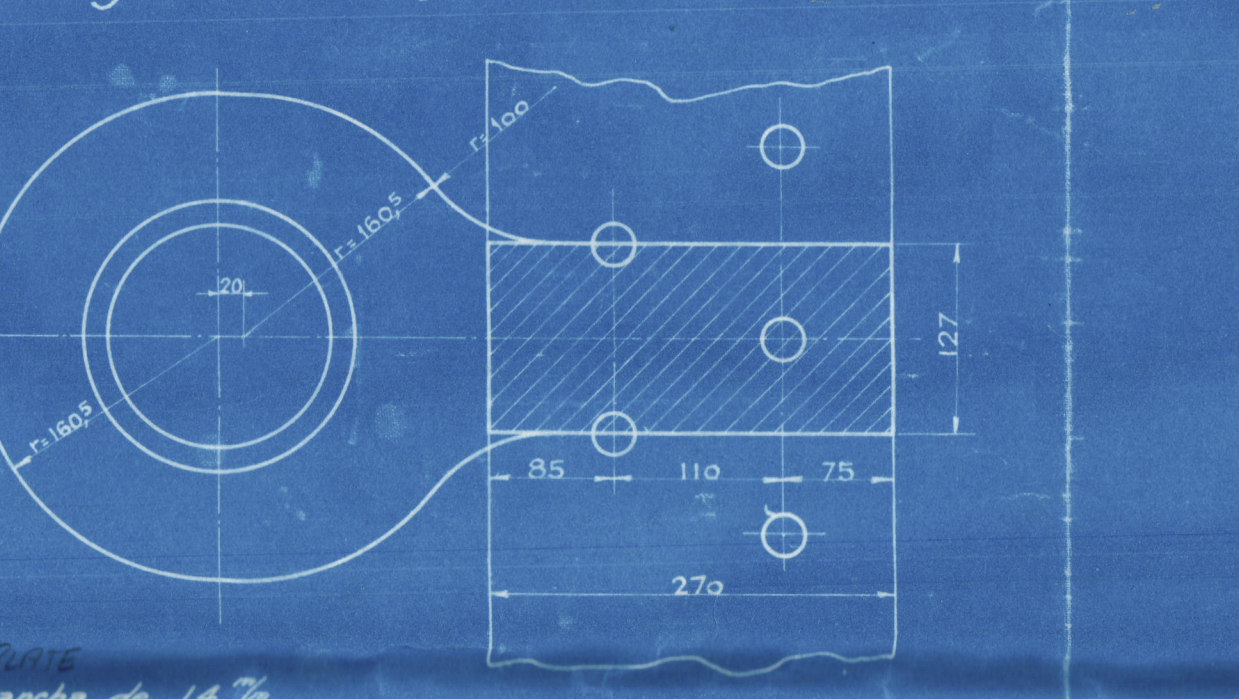
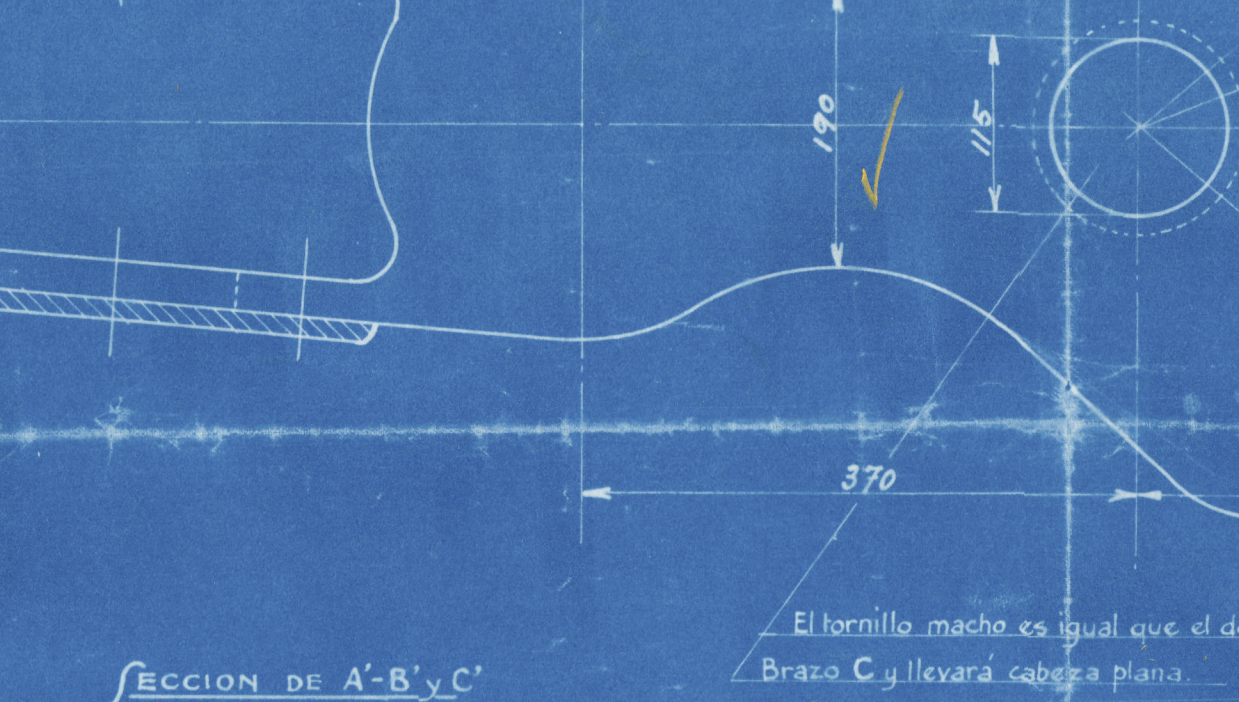
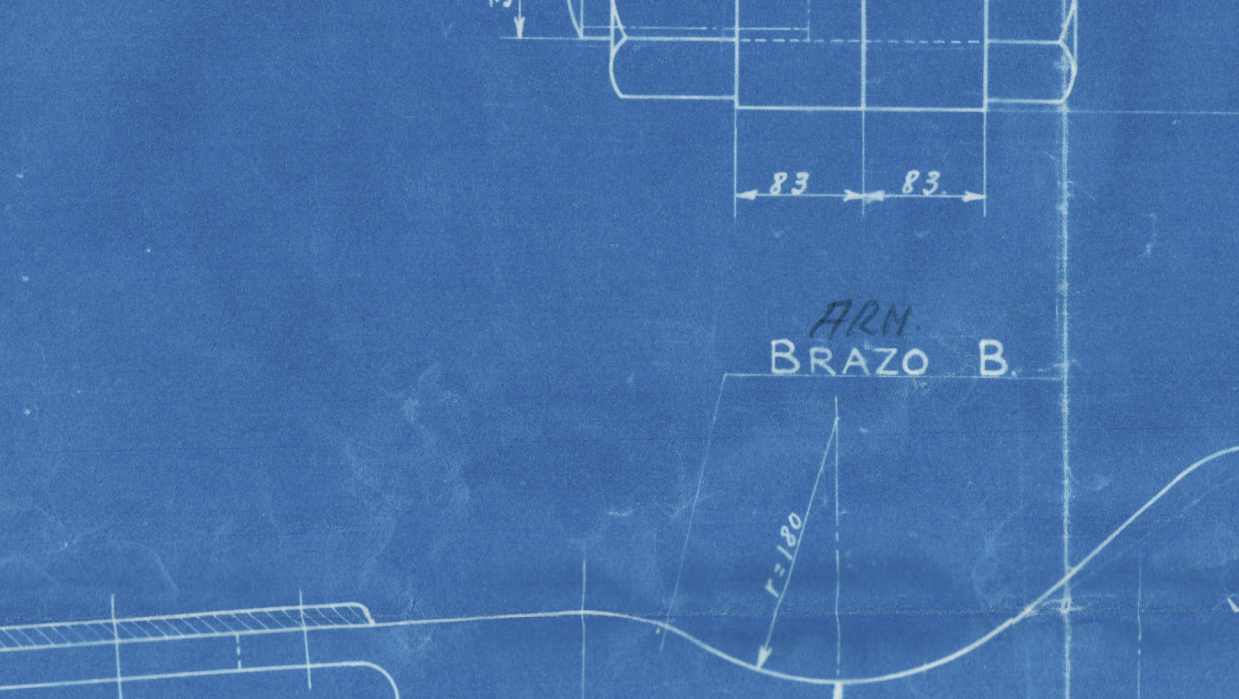
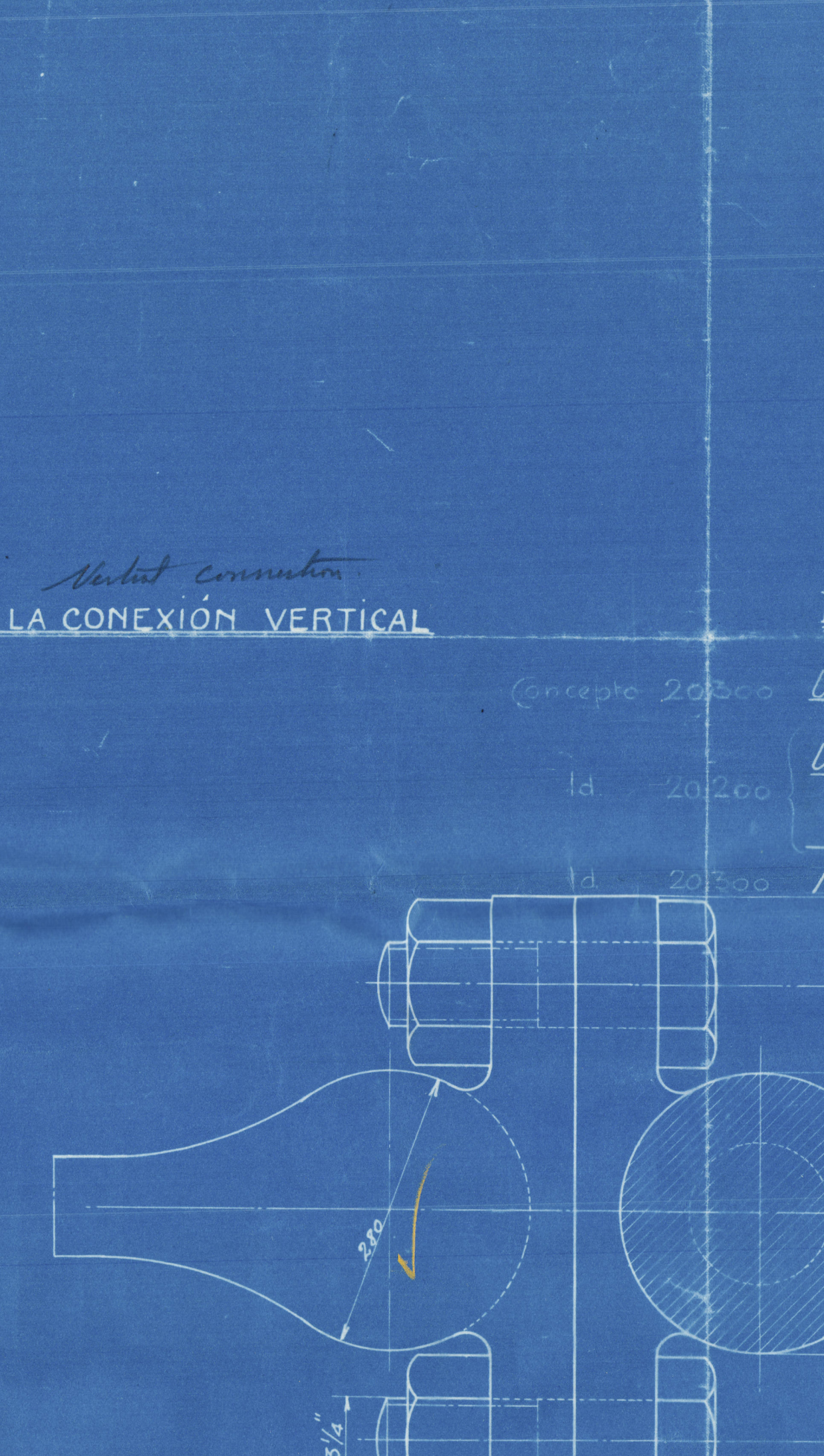
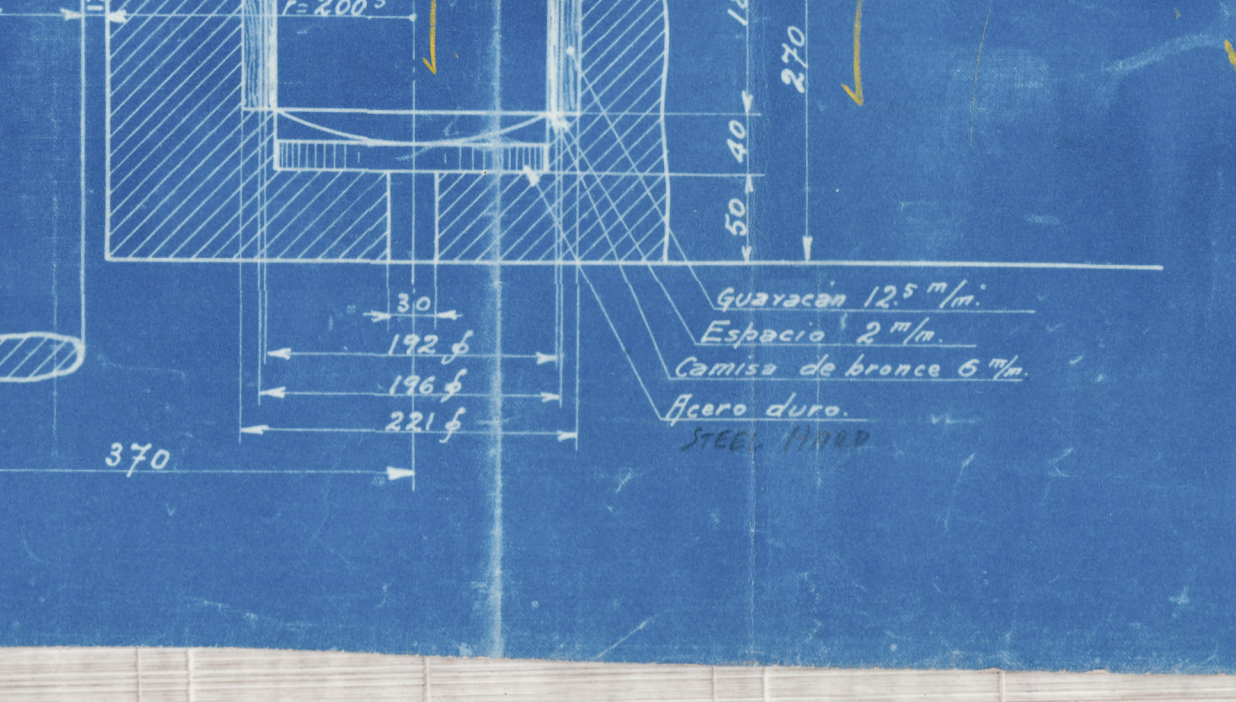
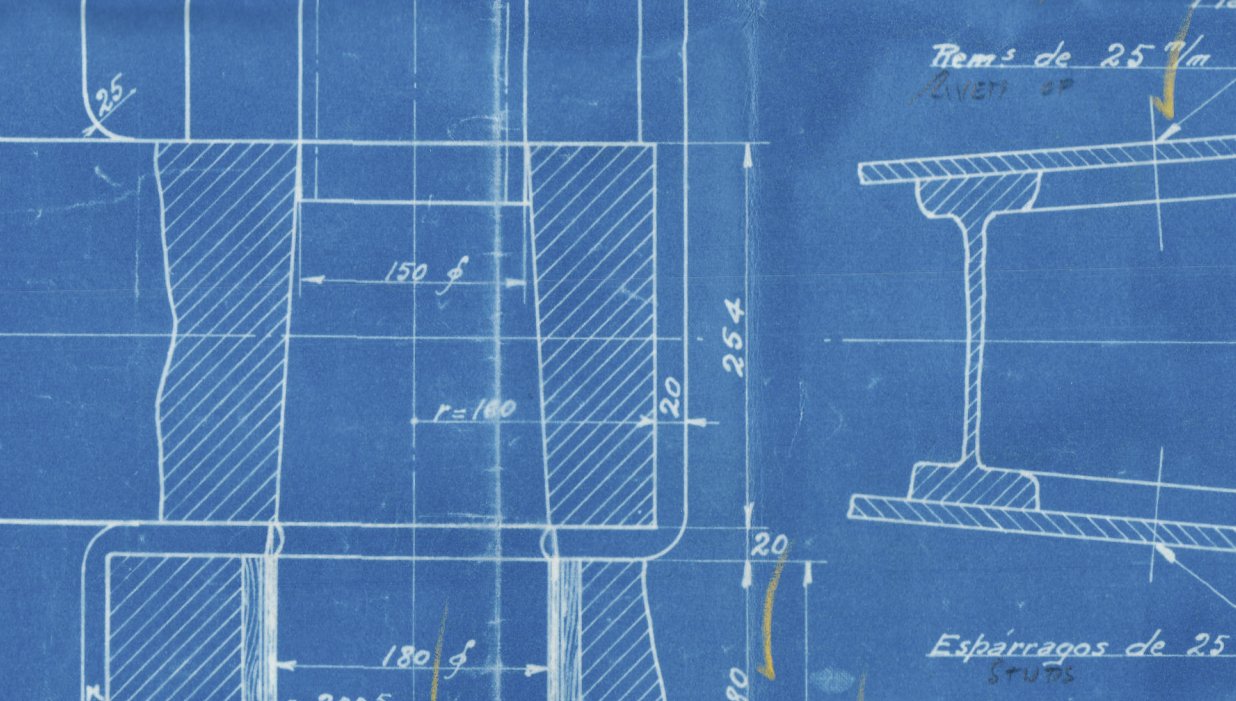
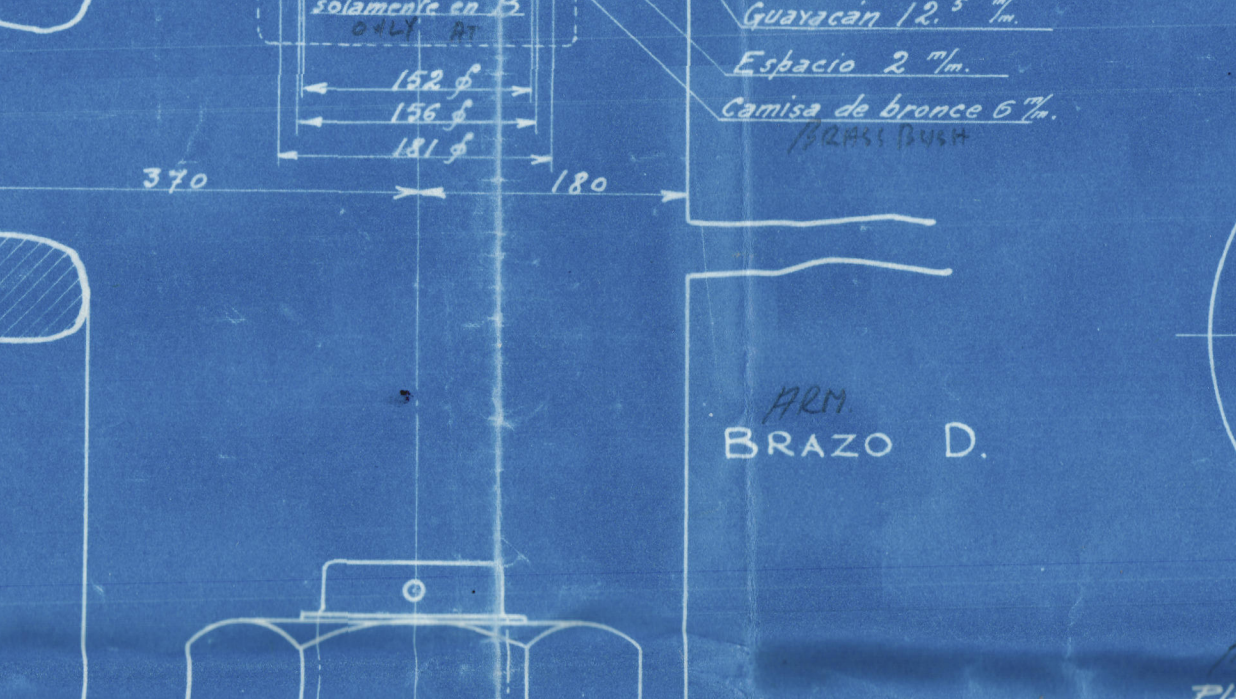
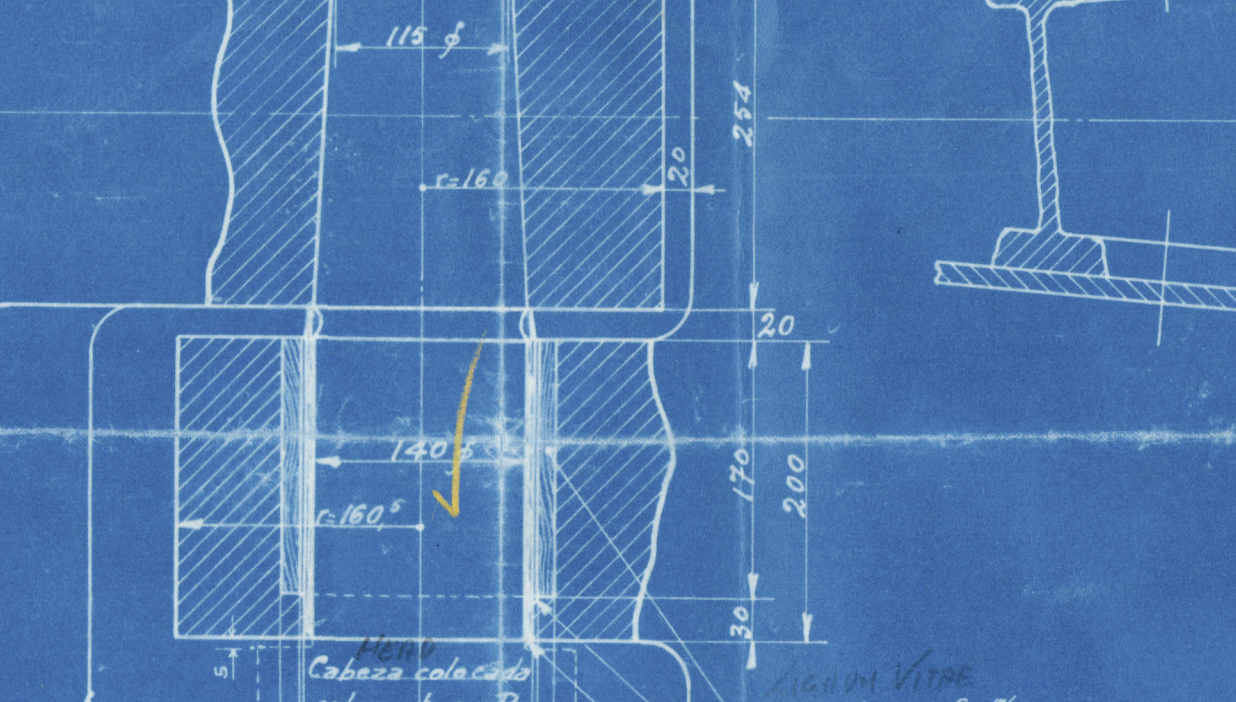
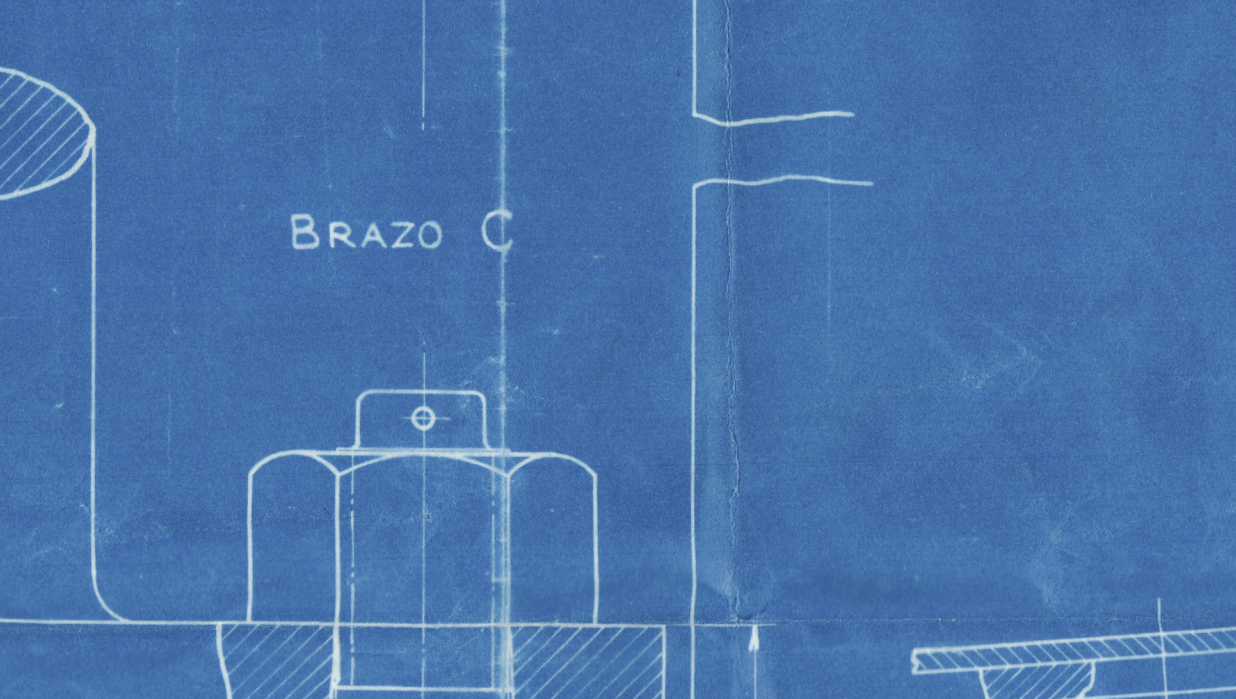
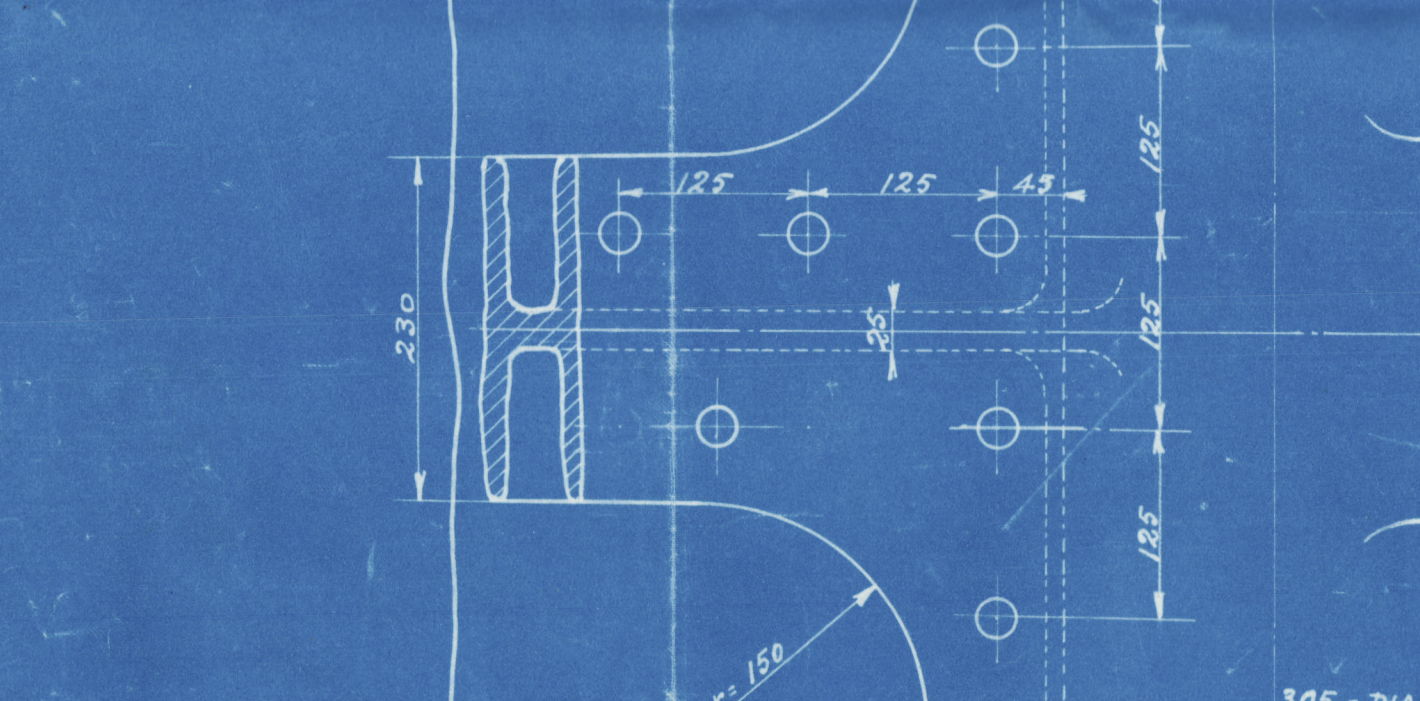
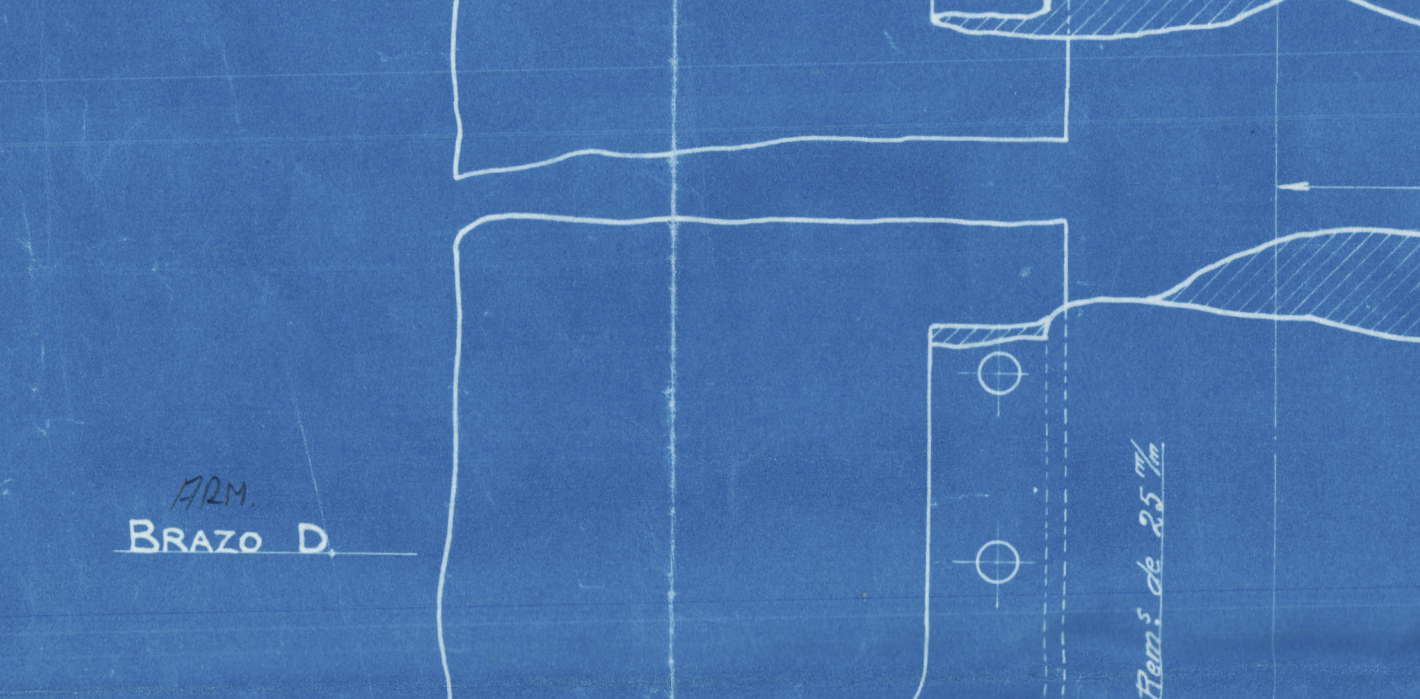
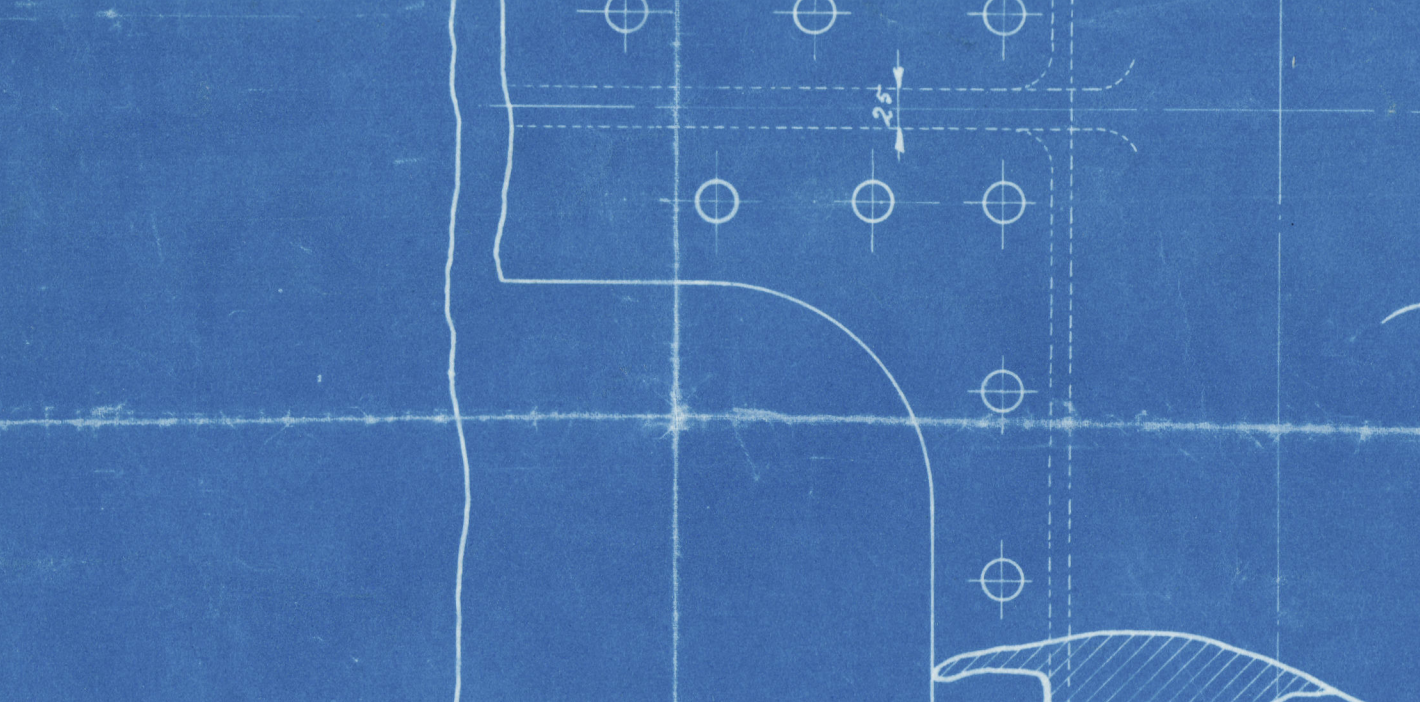
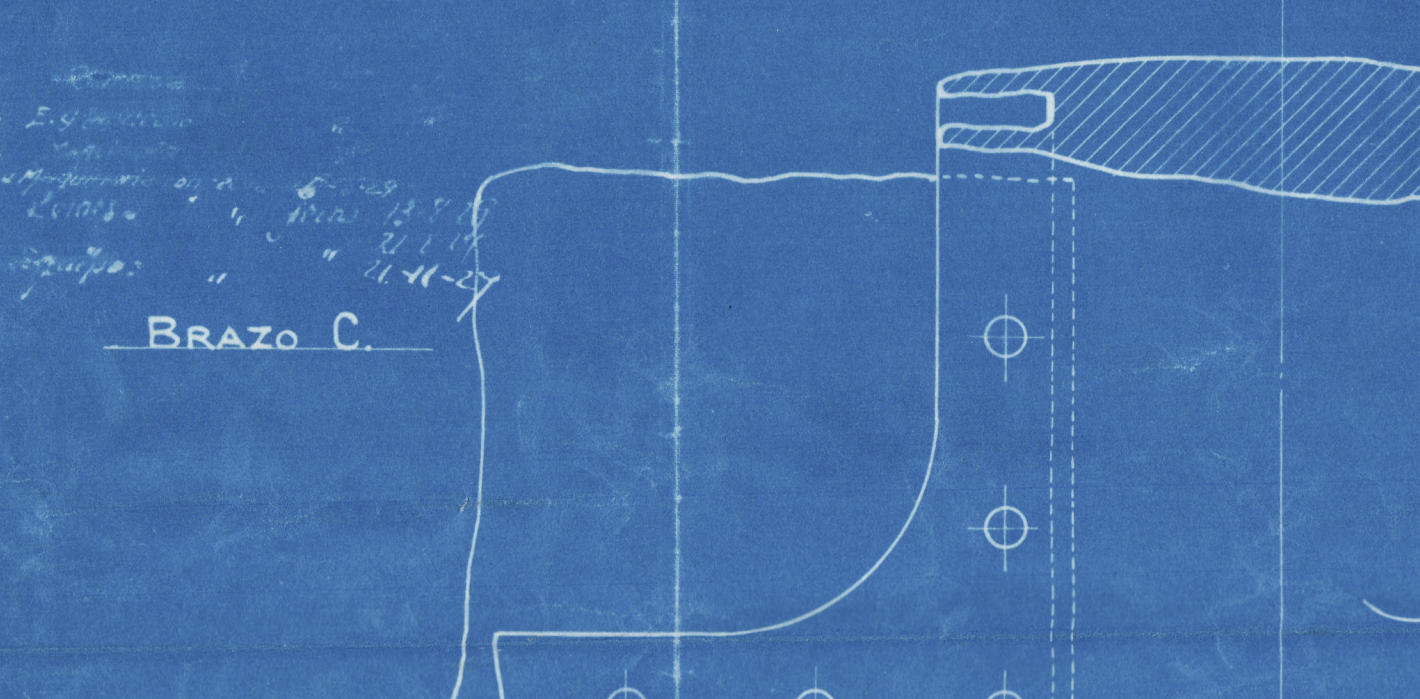
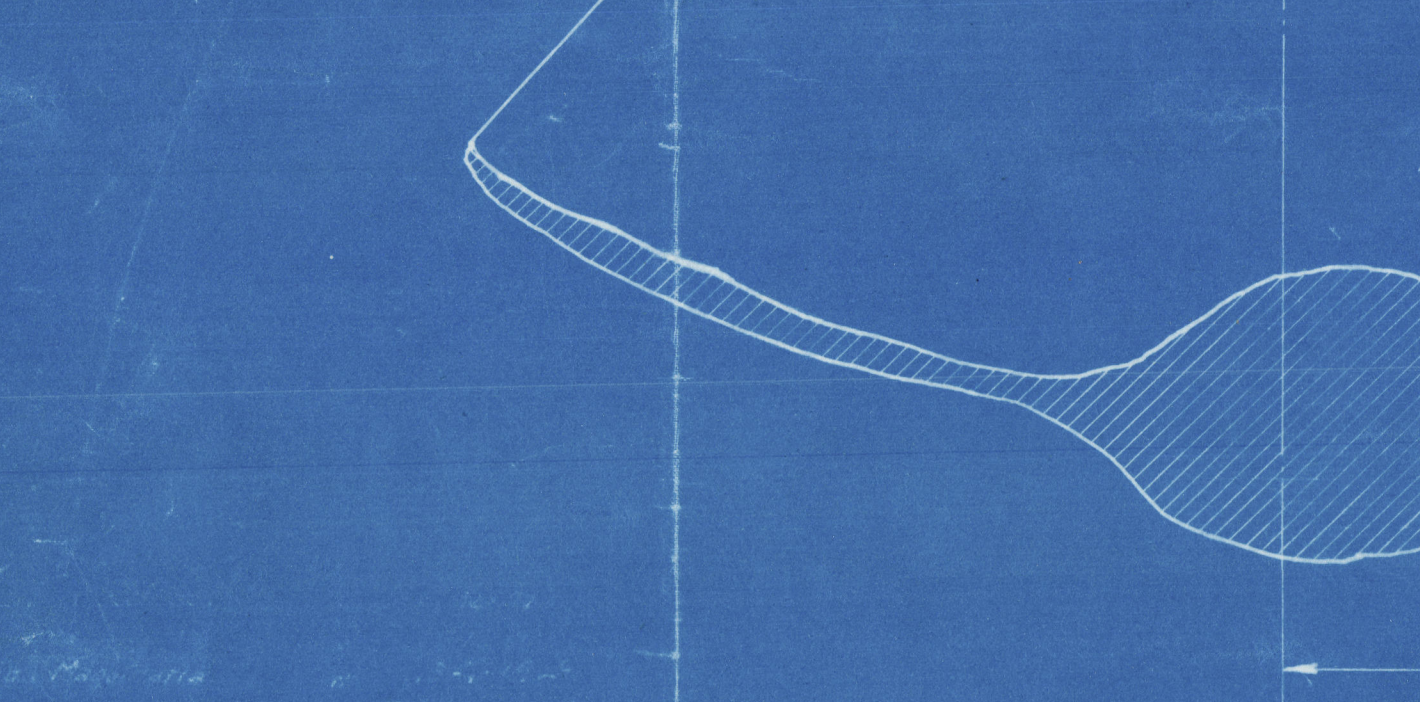


BUQUE N° 38 y 39

STERN POST
Codaste y Timon

Escalas
Conjunta = 1:25
Detalles = 1:5

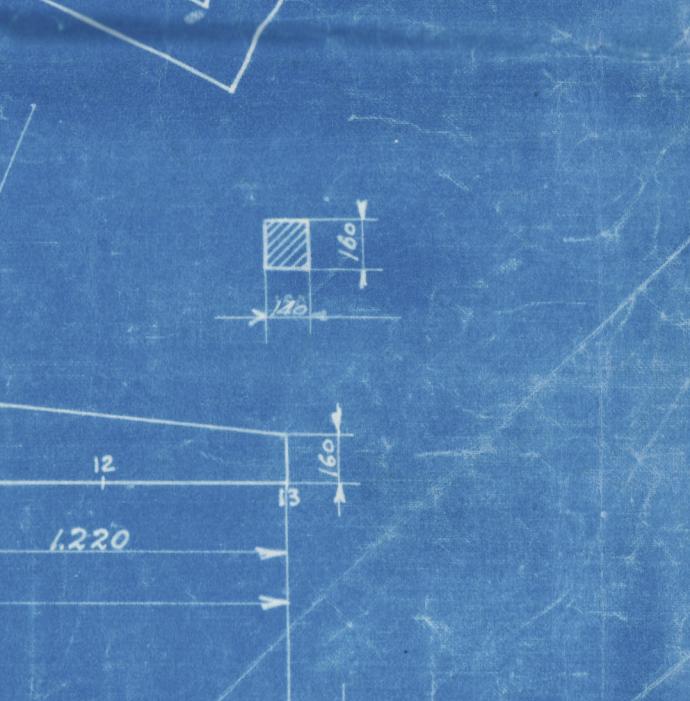
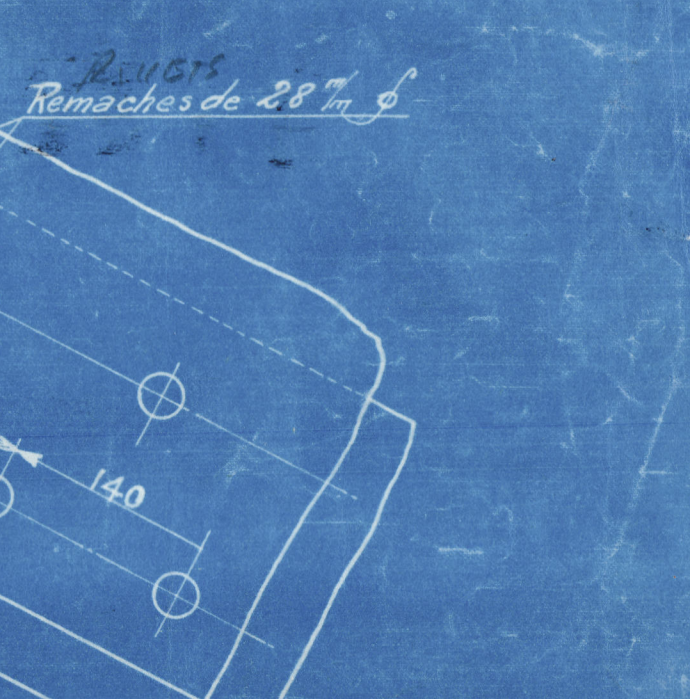
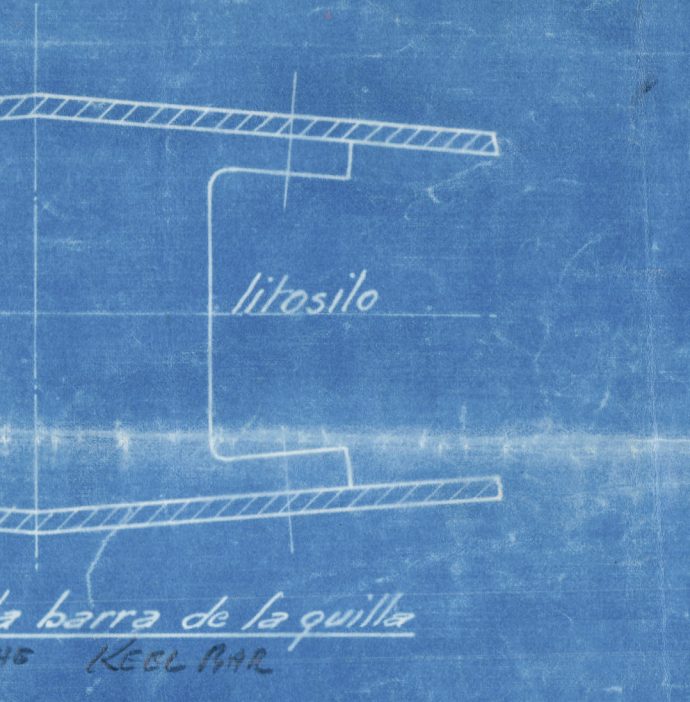
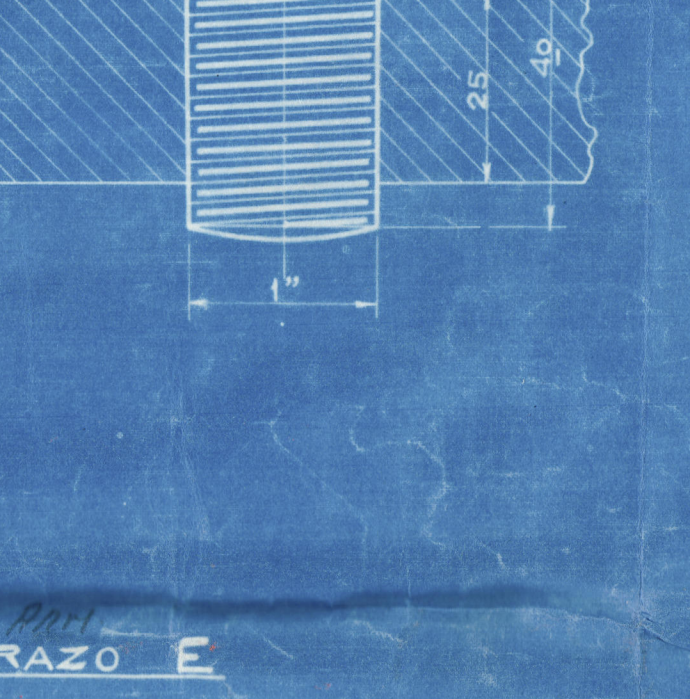
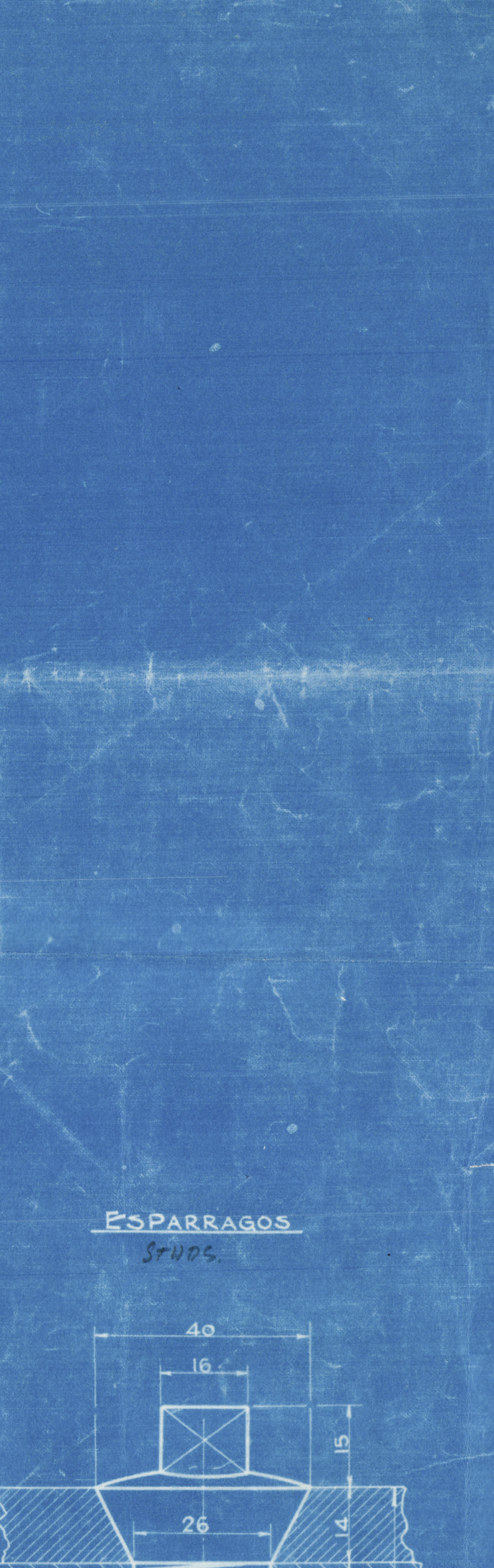
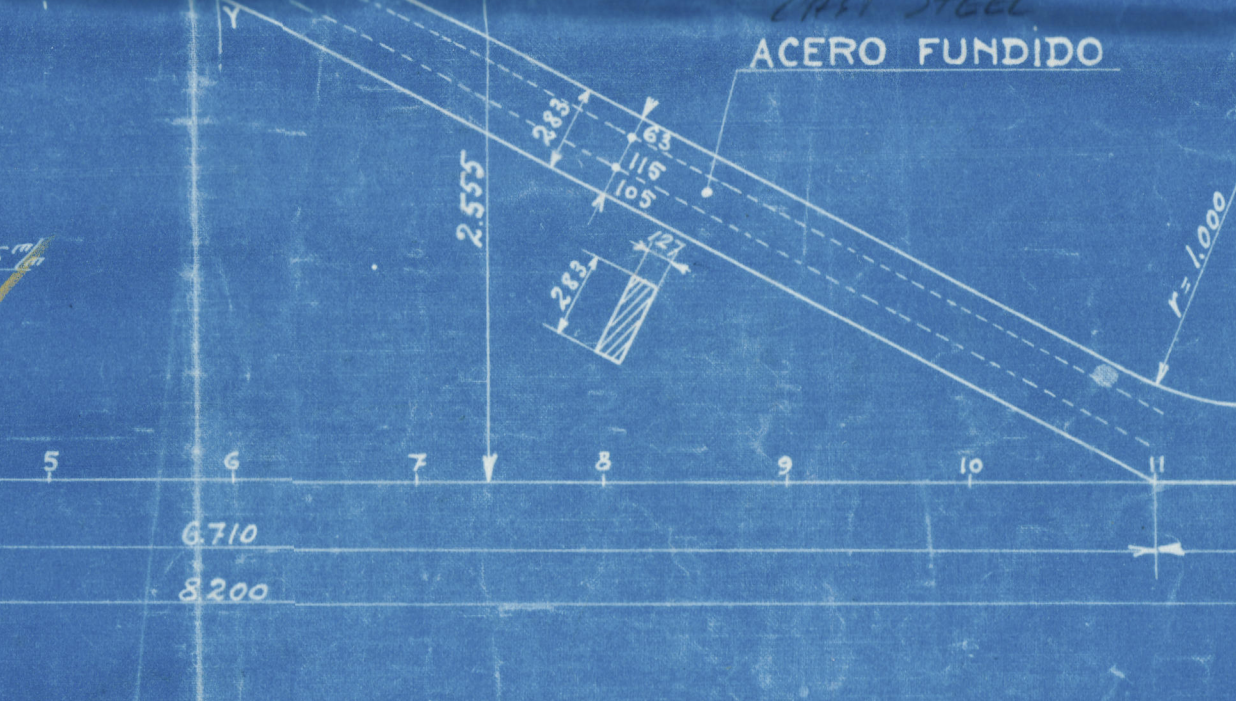
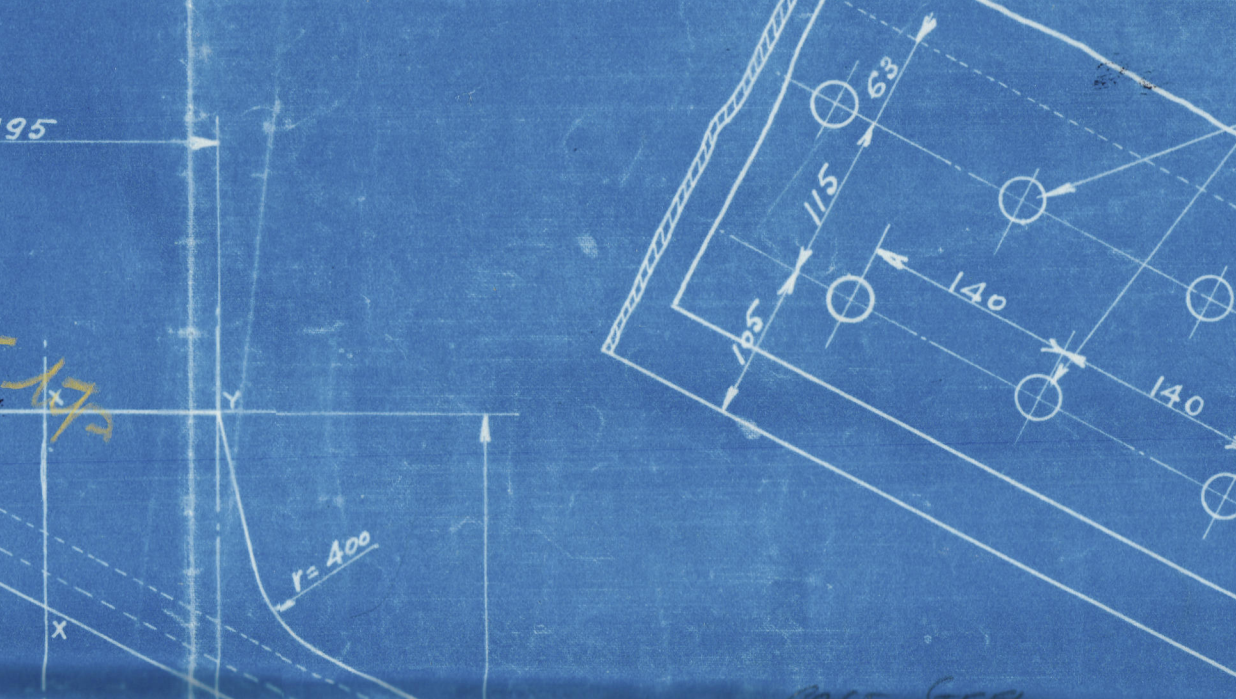
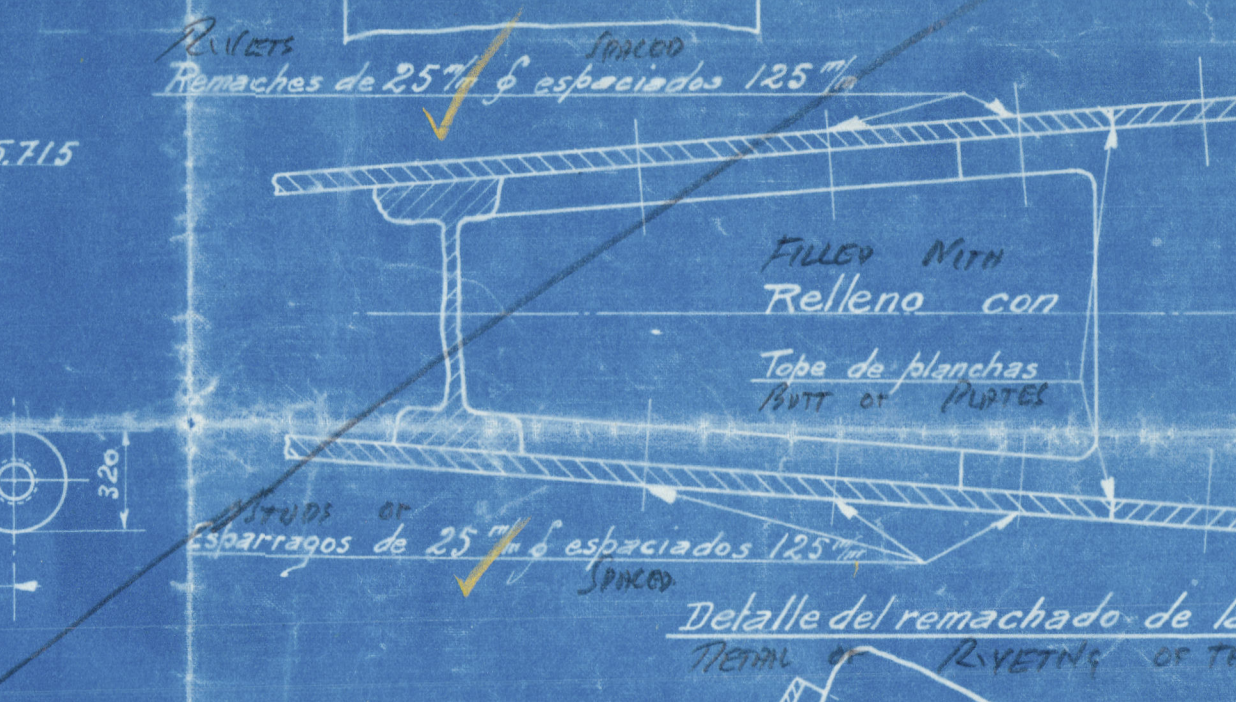
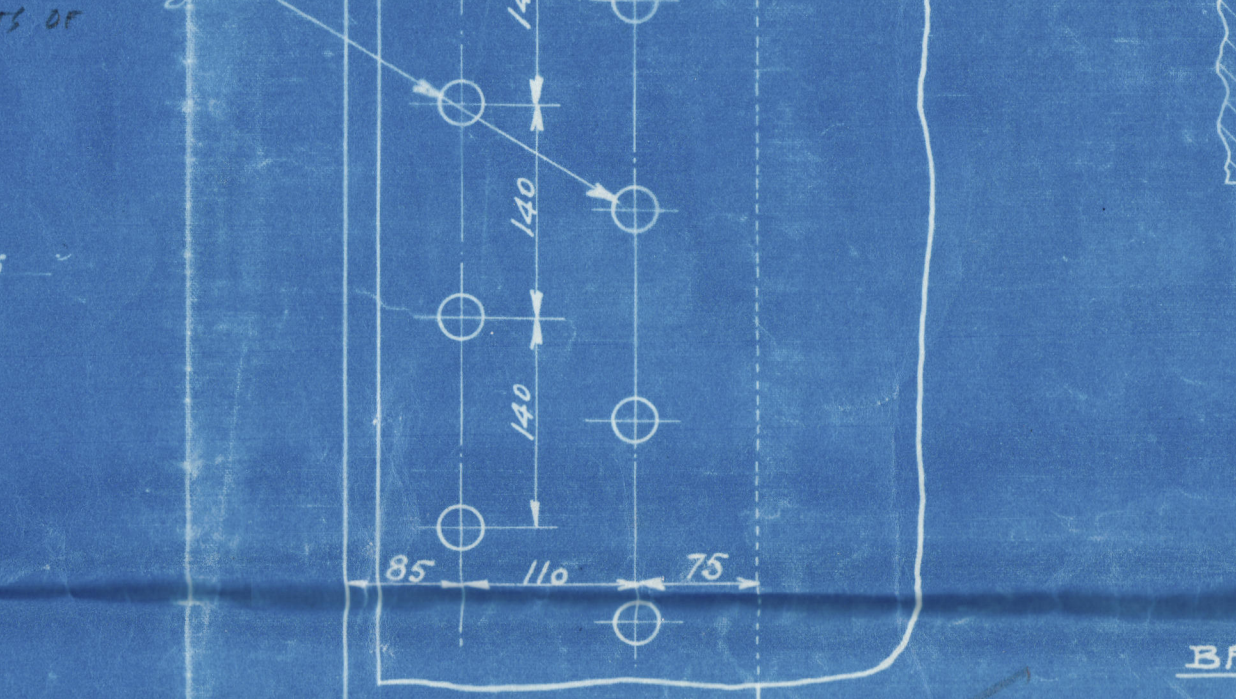
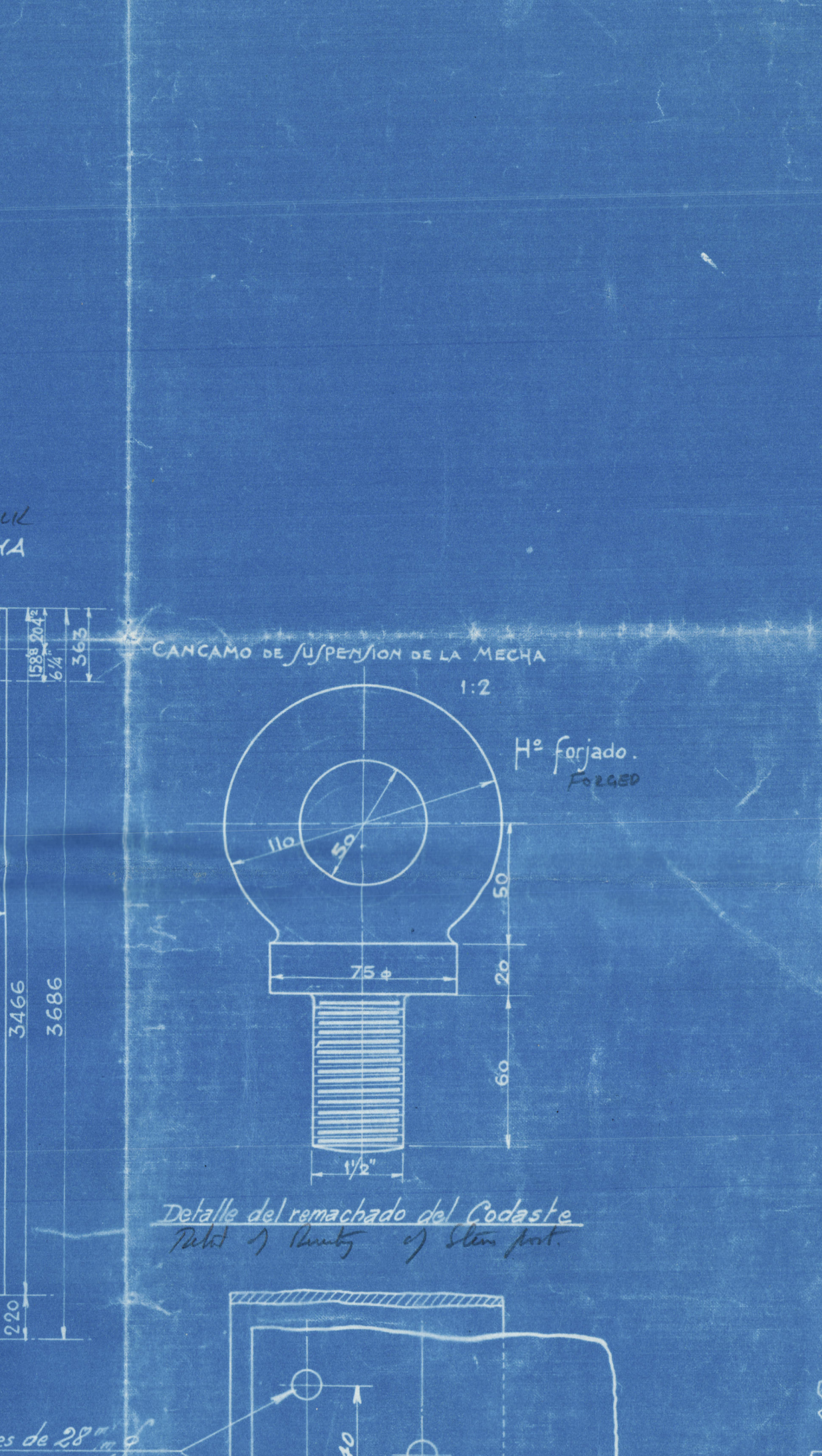
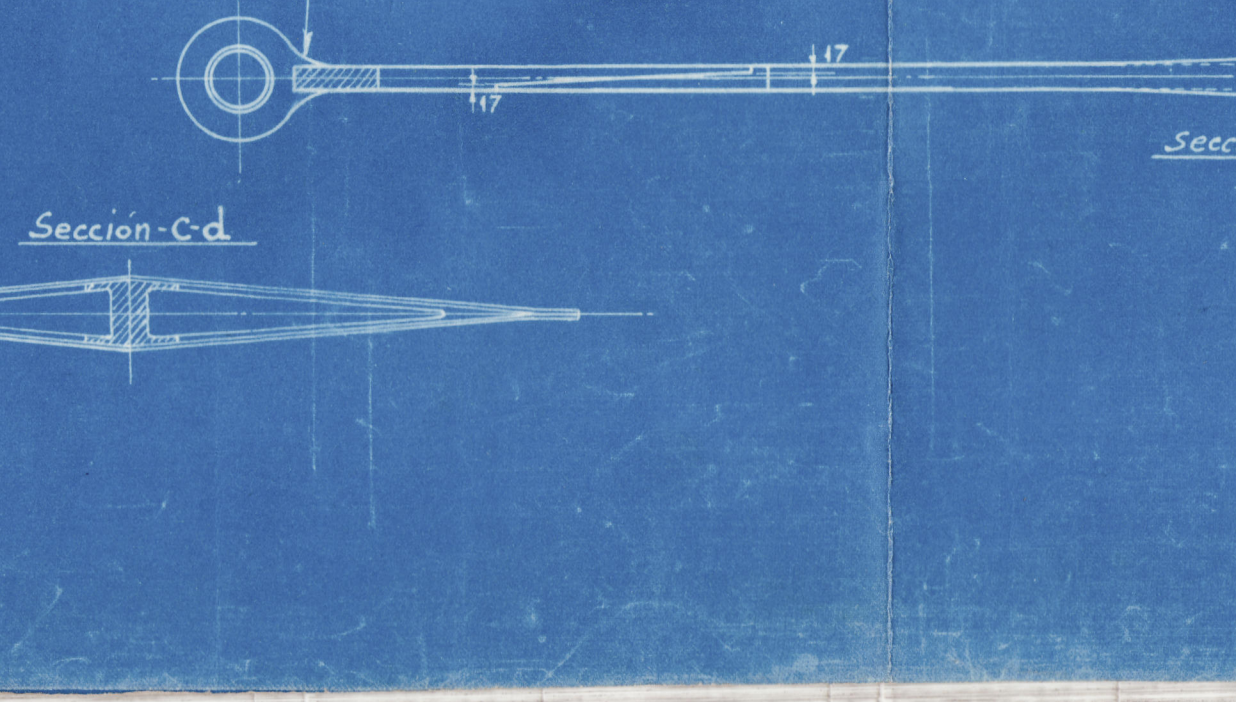
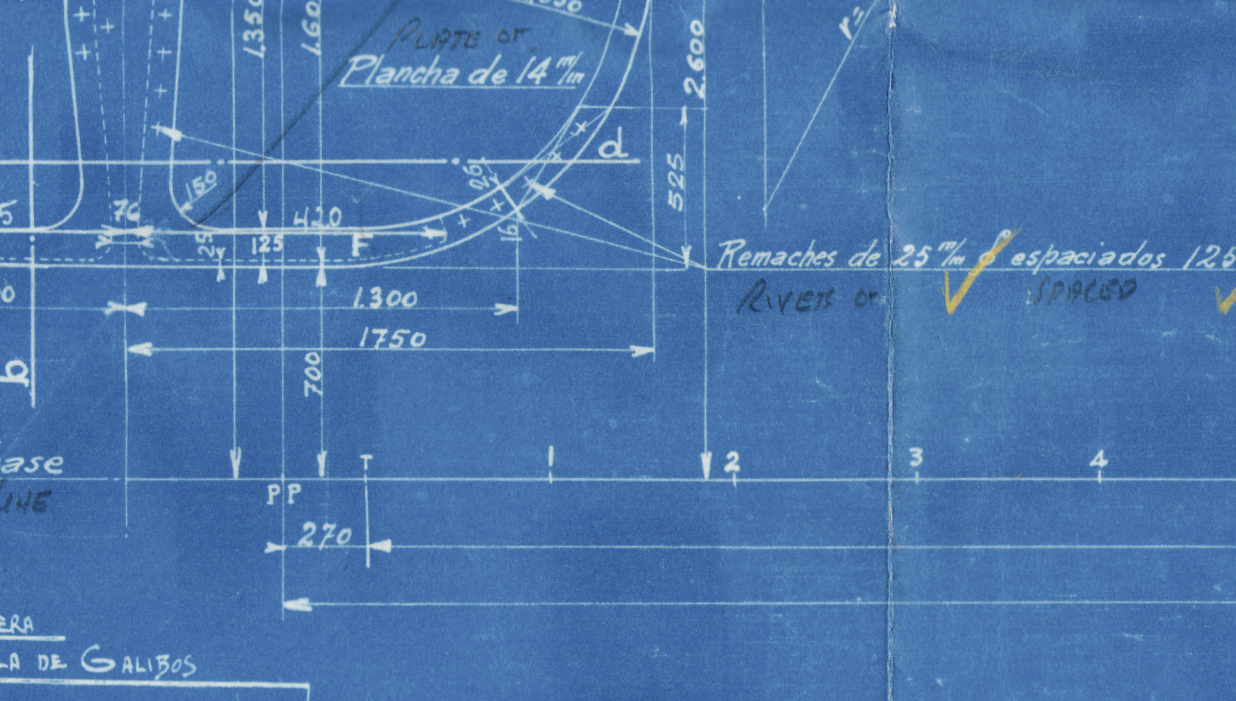
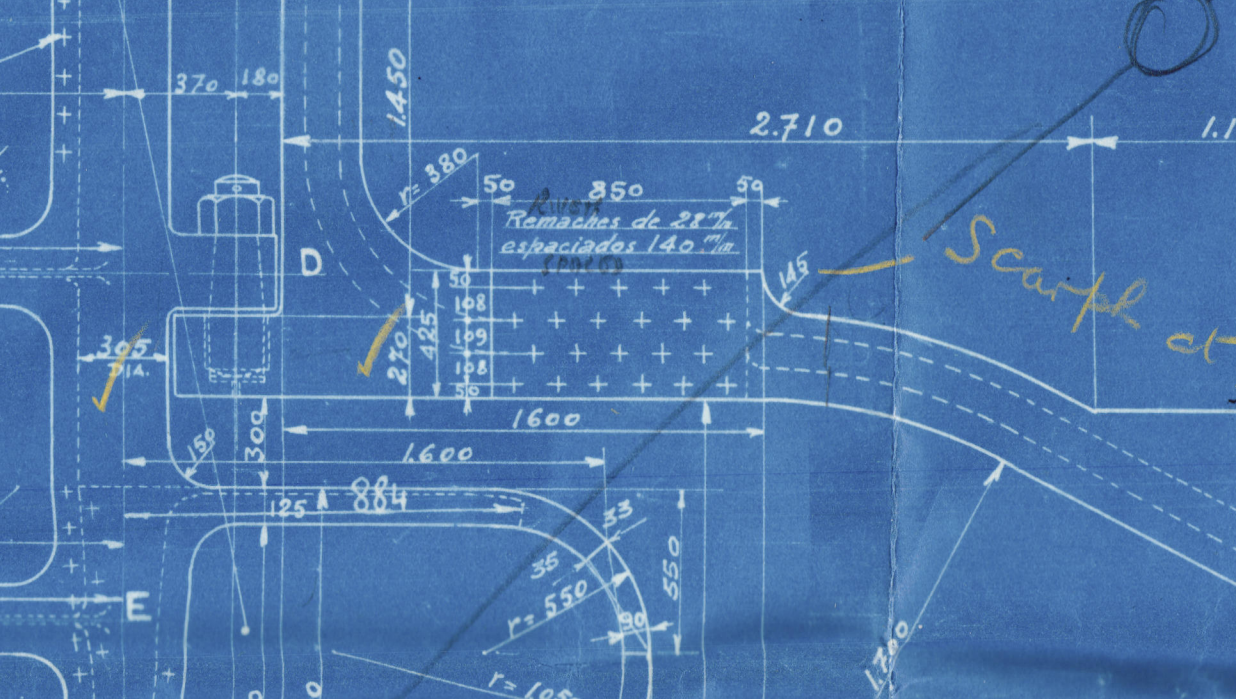
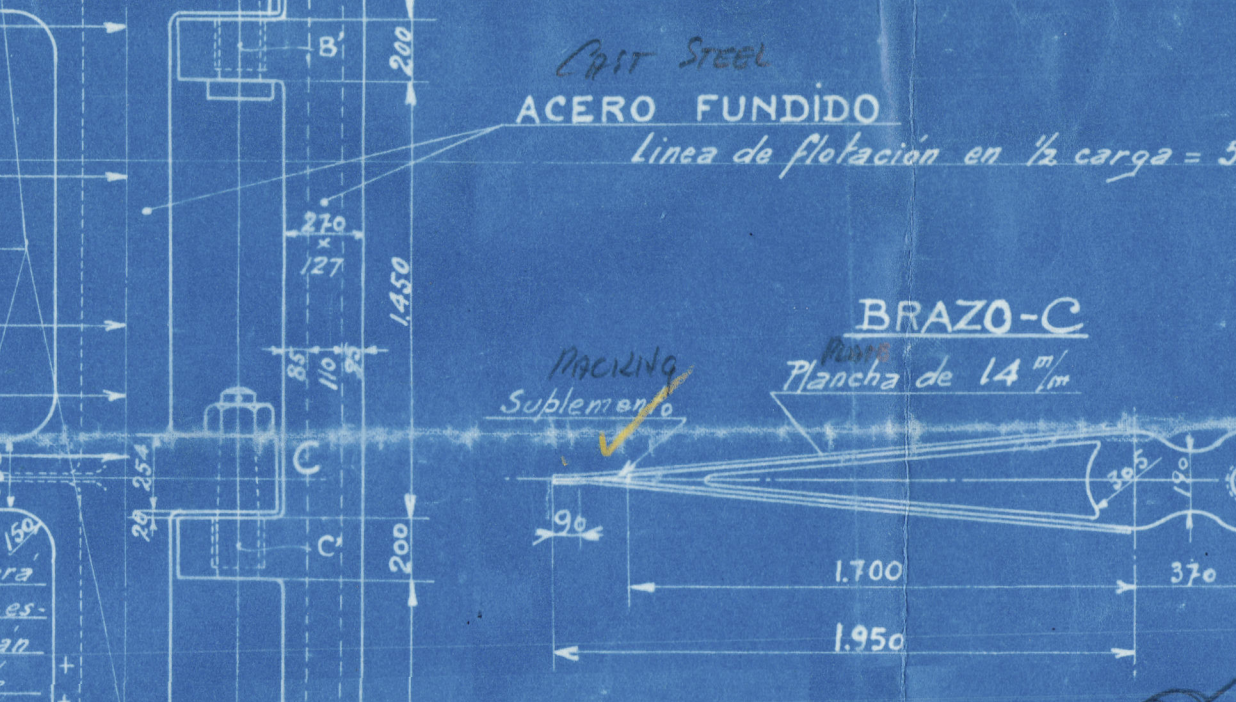
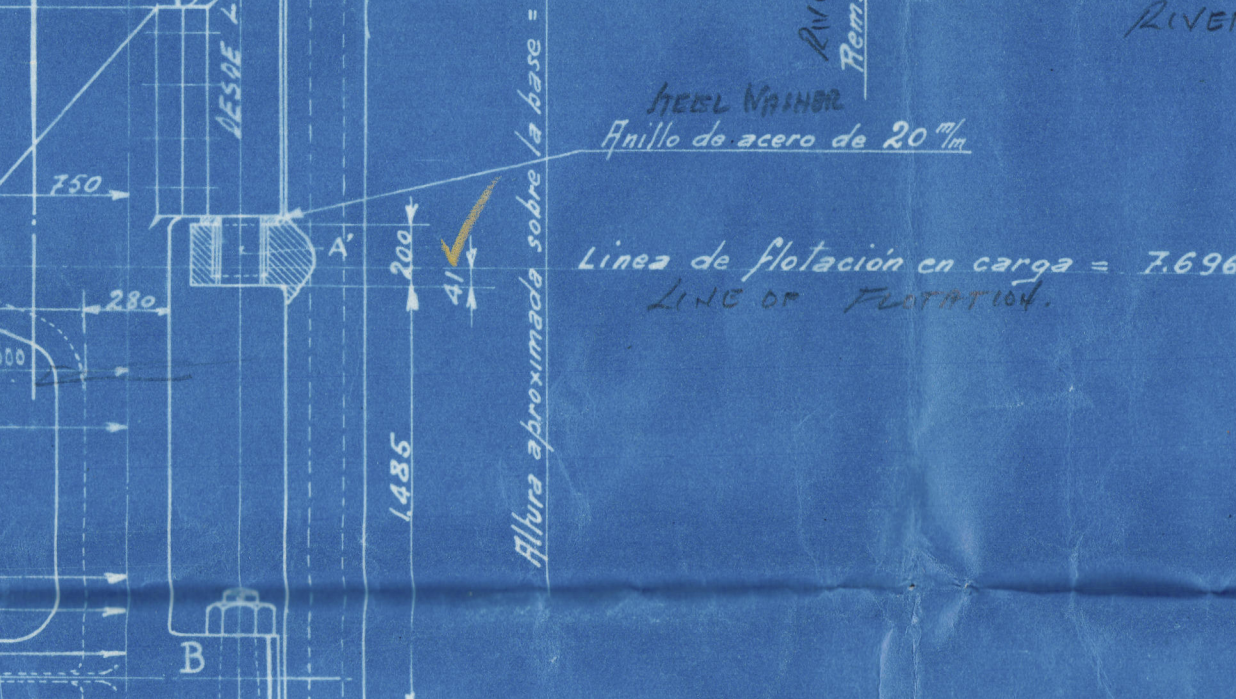
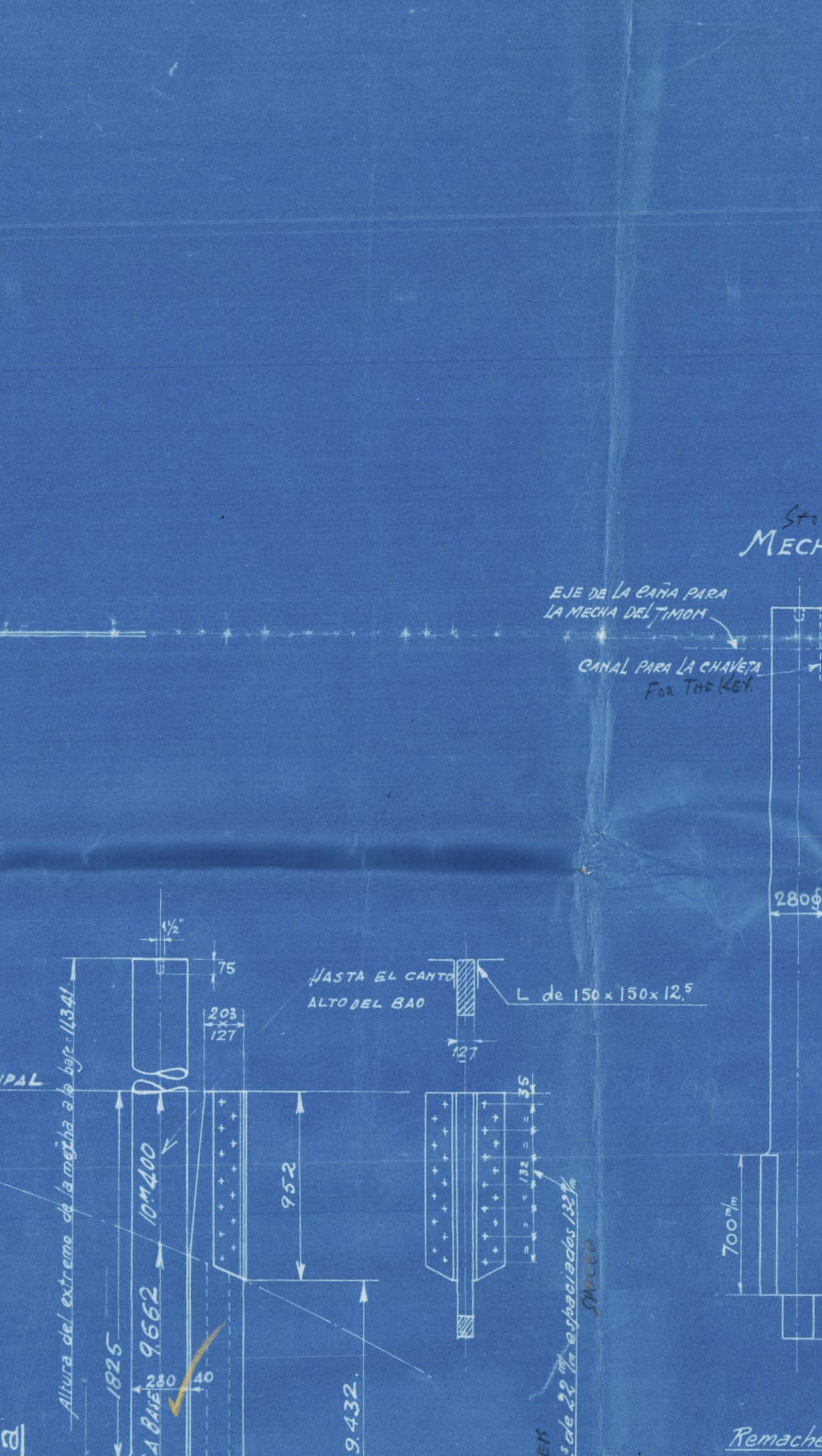
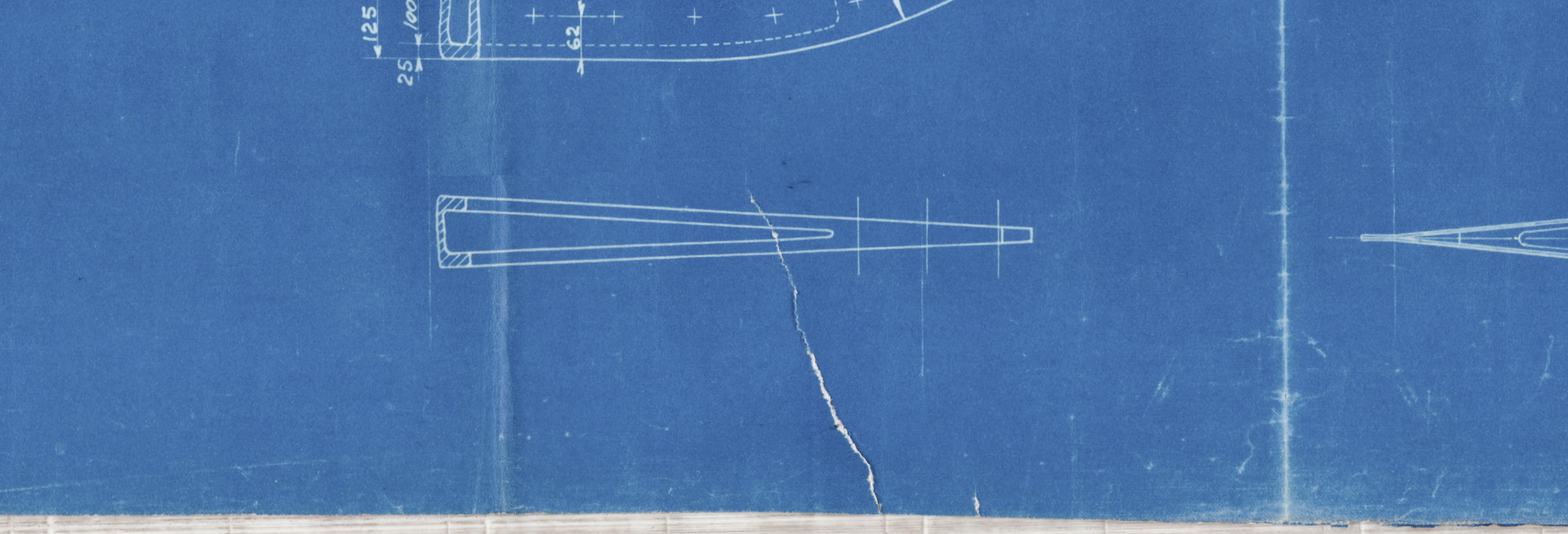
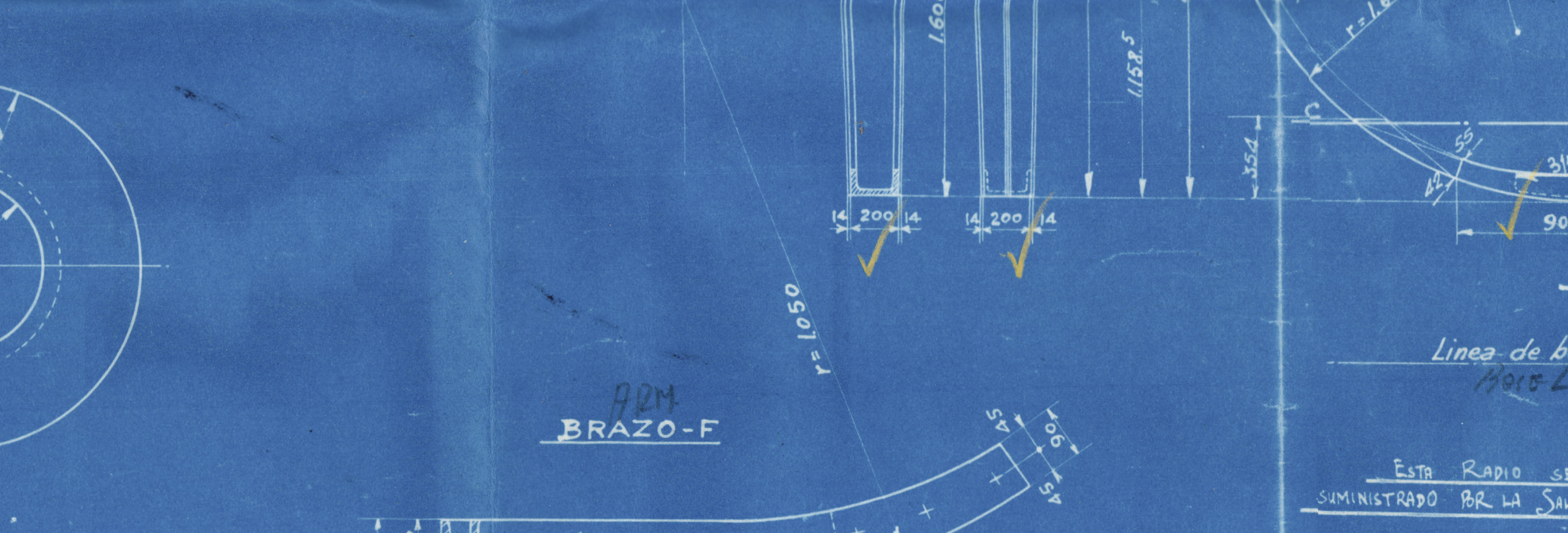
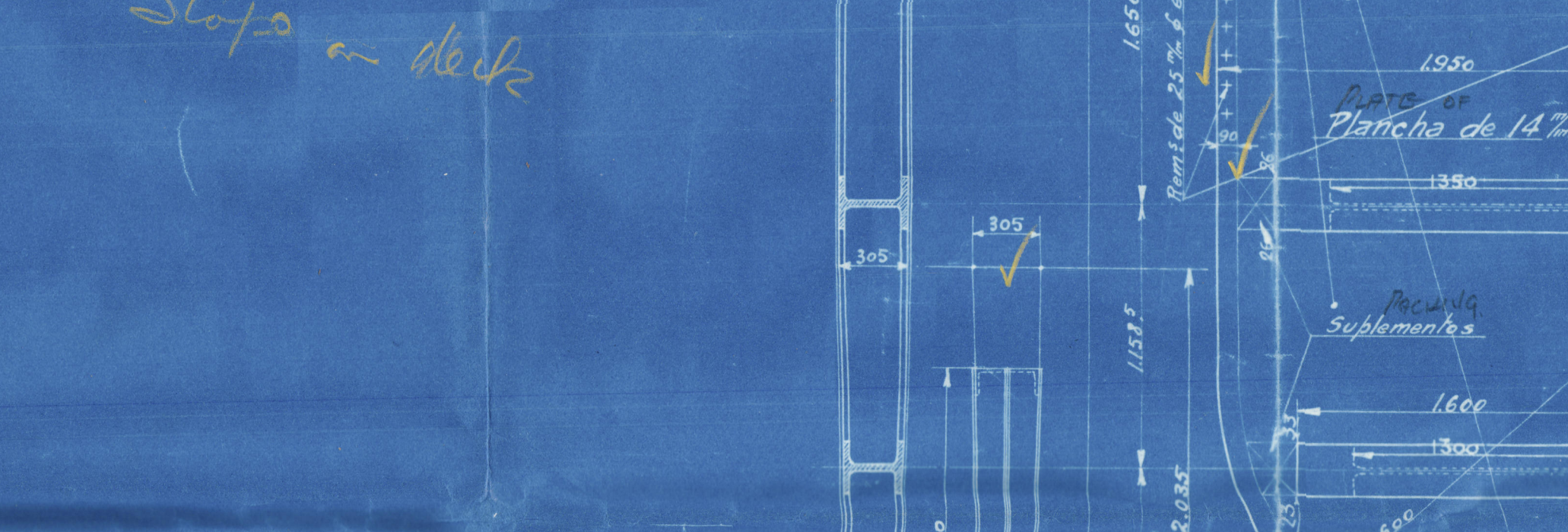
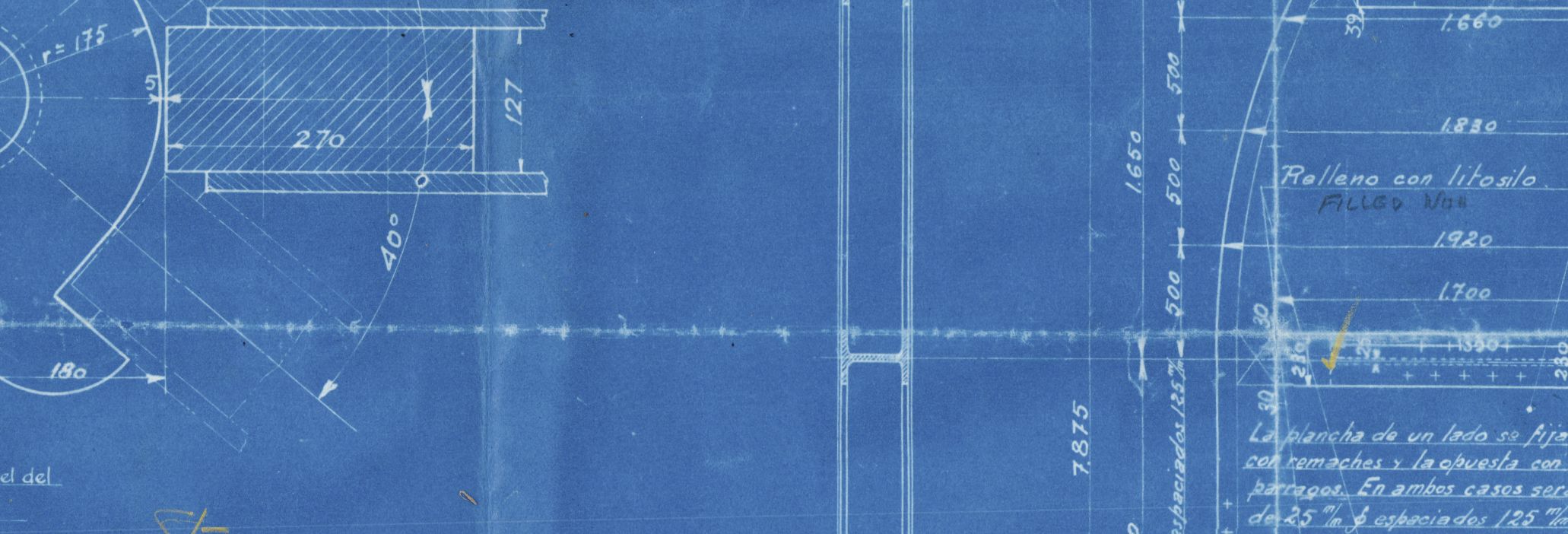
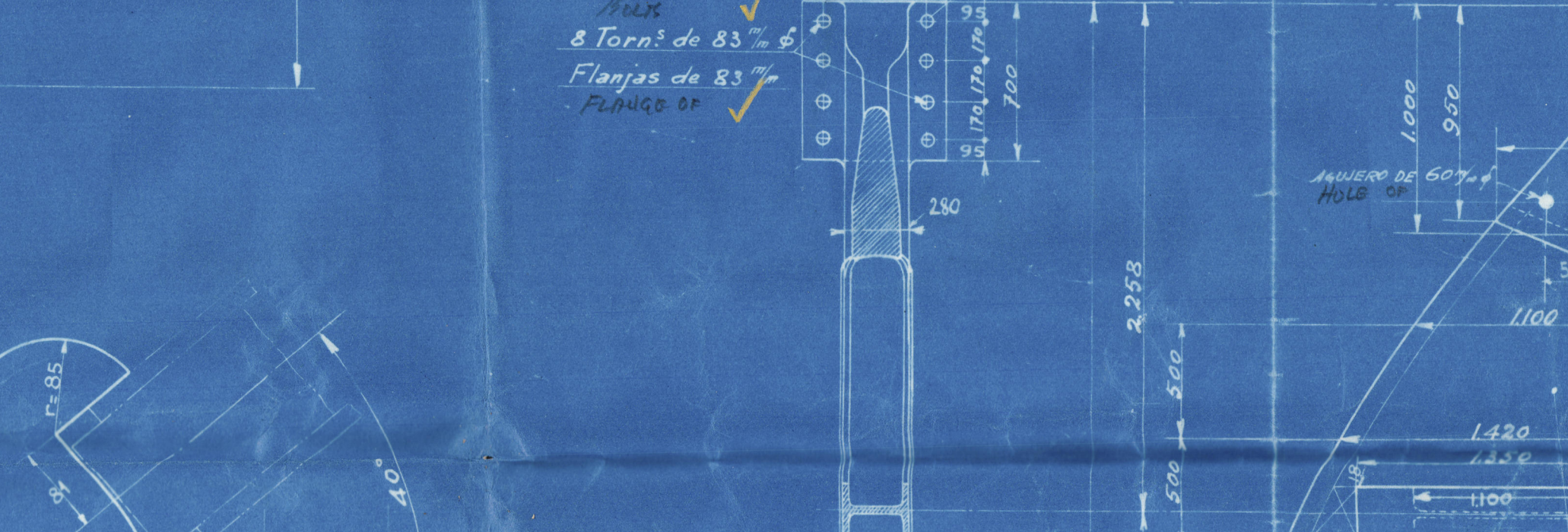
Material
Pieza principal del timon = Acero fundido
Codaste = Hierro forjado
Mecha = Hierro forjado



VELOCIDAD OF SUP LOADED
Velocidad del buque a toda carga = 15 nudos. ✓
Calado DEPT. id. id. id. = 25'-3".

PESOS RECIBIDOS DE "REINOJA" POR FACTURA N°

UN TIMON	=	KGS.	Peso sin magnificar
UNA PARTE DEL CODASTE	=	"	"
MECHA DEL TIMON	=	"	"



Loc. Espanola

38-29

Stempost + Rudder

GEN. BOX NO 386

“CABO SAN AGUSTIN”



© 2020

Lloyd's Register
Foundation

005518-005528-0147