

Lloyd's Register of Shipping.
SURVEYS FOR FREEBOARD.
(CONDITIONS OF ASSIGNMENT.)

Ship's Name *SAN VELINO*

Port of Survey NEWCASTLE-ON-TYNE

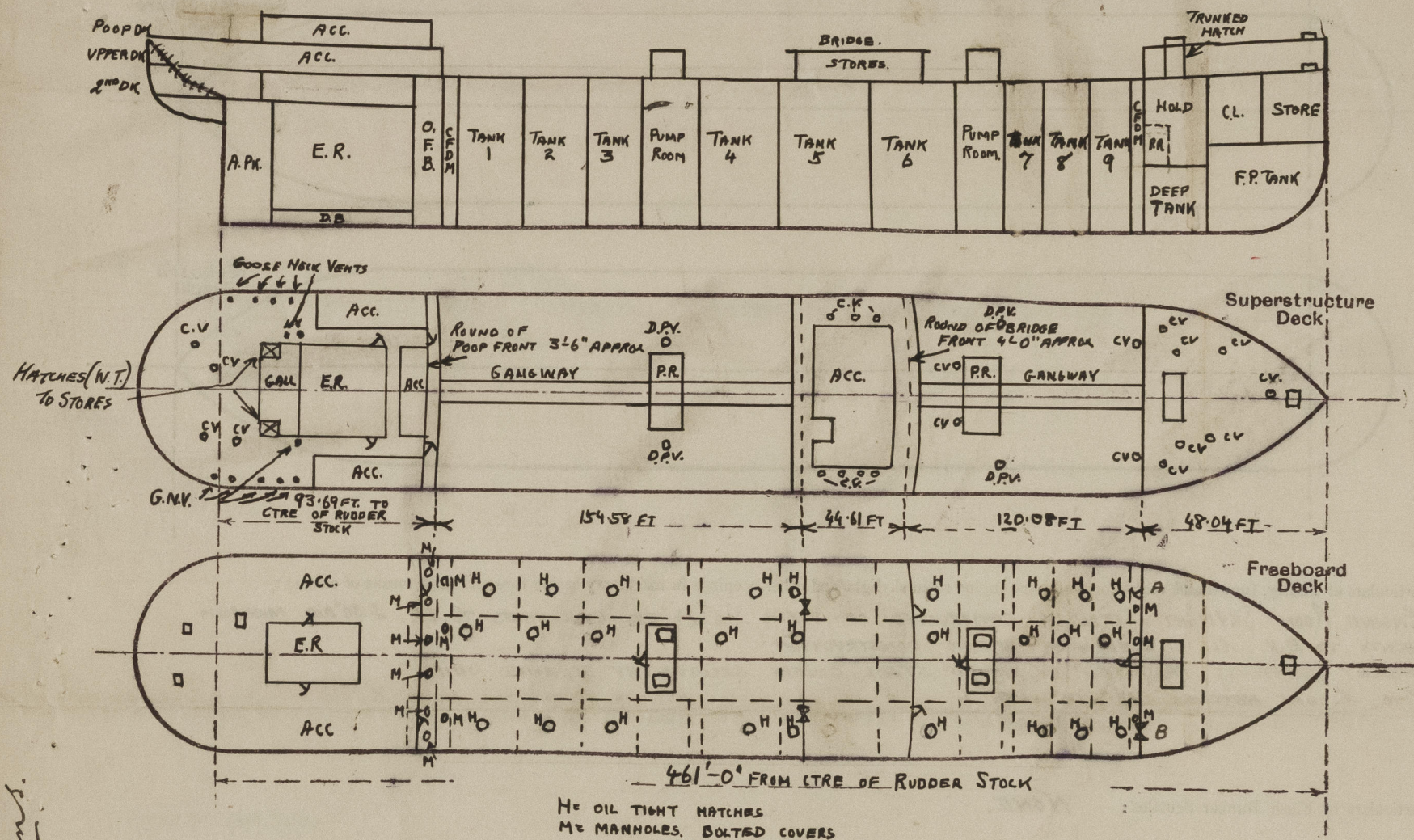
Official Number

Surveyor's Signature *A. Hunter*

Nationality and Port of Registry *BRITISH.*

Date of Survey *1944 DURING CONSTRUCTION*

Disposition and dimensions of superstructures, trunks, deckhouses and machinery casings to be inserted in the diagrams and tabular statement : —



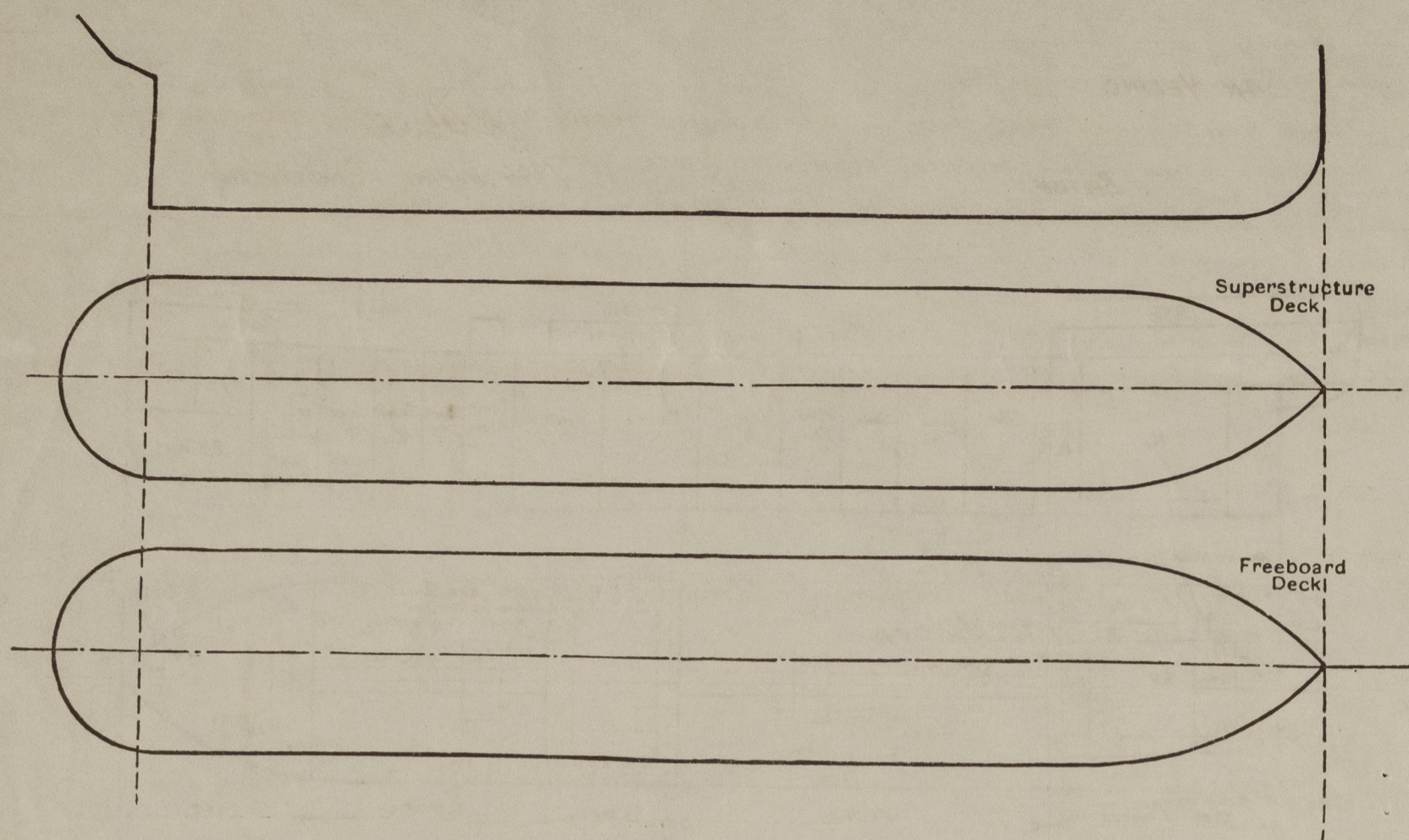
Particulars of Superstructures, Trunks, Casings, Deckhouses.

	Coaming	Plating	Stiffeners	Spacing	End Attachments of Stiffeners	Size of Openings	Height of Sills	Height of Casings
Poop Bulkhead44 ✓		10x3½x .40 BA. ✓	ABOUT 30"	LUGS AT TOP BRACKETS AT BTM	2@ 5'-0" x 2'-10"	18"	7'-6"
Raised Quarter Deck Bulkhead ...	NONE. ✓							
Bridge, After Bulkhead	-	.32 ✓	5x3x.30 O.A. ✓	ABOUT 30"	RIVETED THRO' BOUNDARY BARS.	2@ 5'-0" x 4'-0"	24"	
Bridge, Forward Bulkhead	-	.44 ✓	9x3½x .42 BA. ✓	" 33"	BRTS. TOP & BTM. RIVETED THRO' A. & B.	2@ 5'-0" x 3'-0"	18"	7'-6"
Forecastle Bulkhead	-	.32 ✓	4x3x .34 OA ✓	" 30"	RIVETED THRO' A. & B. BOUNDARY BARS.	1@ 5'-0" x 2'-6" 1@ 5'-0" x 4'-0"	18" 24"	7'-6"
Trunk, Aft	NONE...							
Trunk, Forward	NONE...							
Exposed Machinery Casings on Free- board or Raised Quarter Decks ...	NONE. ✓							
Exposed Machinery Casings on Super- structure Decks34 ✓	.30 ✓	3x3x.30 OA. ✓	30¾"	BRTS. TOP CONT. BELOW SUPERS. PK.	2@ 4'-6" x 2'-0"	18"	8'-4"
Machinery Casings within Superstruc- tures not fitted with Class I Closing Appliances	NONE...							
ENTRANCES TO PUMP ROOMS		.40 FRONT & SIDES	6x3x.36 BA ✓	30"/33" ✓	BRTS AT TOP	4'-0" x 2'-3" ✓	24" ✓	7'-6"
Lockhouses on Flush Deck Ships ... ON PBD. DECK.		.30 AFT. ✓	4x3x.32 OA ✓	ABOUT 30" ✓	LUGS & BTM			

Particulars of Closing Appliances (state if capable of being manipulated from both sides).

Poop Bulkhead	...	HINGED STEEL W.T. DOORS CLOSED BY CLIPS MANIPULATED BOTH SIDES ✓
Raised Quarter Deck Bulkhead	...	—
Bridge, After Bulkhead	...	PORTABLE STEEL PLATES SECURED BY HOOK BOLTS SPACED 18" ✓
Bridge, Forward Bulkhead	...	HINGED STEEL W.T. DOORS CLOSED BY CLIPS MANIPULATED BOTH SIDES ✓
Forecastle Bulkhead	...	A. " " DODR " " " " " "
Exposed Machinery Casings on Free-board or Raised Quarter Decks	..	B. PORTABLE STEEL PLATES SECURED BY HOOK BOLTS SPACED 18" ✓
Exposed Machinery Casings on Superstructure Decks	...	—
Machinery Casings within Superstructures not fitted with Class I Closing Appliances	...	HINGED STEEL DOORS . LOCKS & HANDLES MANIPULATED BOTH SIDES. ✓
PUMP ROOM ENTRANCES ON FSD OR Deckhouses on Flush Deck Ships	...	—
		HINGED STEEL DOORS . CLOSED BY CLIPS MANIPULATED BOTH SIDES ✓

The following diagrams should be used to indicate the positions of cargo and coaling hatchways, gangway, cargo and coaling ports, ventilators, companionways, etc., which would affect the seaworthiness of the ship:—



ENGINE ROOM SKYLIGHT STRONGLY CONSTRUCTED OF STEEL. 6-24" DIA COAL VENTS TO E.R. 2-30" DIA MUSHROOM VENTS TO E.R. ALL OF STEEL & OF STRONG CONSTRUCTION. FIDLEY GRATINGS PROTECTED BY HINGED STEEL COVERS SECURED BY SCREWED CLIPS. TWO ESCAPE HATCHES 18"x18" WITH " " " " " " " " ✓

Particulars of Companionways :—

ON UPPER DECK
DOORS STEEL HINGED W.T. SECURED BY CLIPS OPERATED BOTH SIDES ✓
AT AFT END OF FORECASTLE TO AUXILIARY PUMP ROOM. OPENING IN TRUNK
4'2" x 24" SILL 18". DOOR STEEL HINGED W.T. SECURED BY CLIPS OPERATED BOTH SIDES. ✓

Particulars of Ventilators in exposed positions on freeboard and superstructure decks :—

10 8" 30 x 32 ✓

WOOD PLUGS AND CANVAS COVERS SUPPLIED FOR ALL VENT COAMINGS. CANVAS COVERS SUPP

Particulars of Air Pipes in exposed positions on freeboard, raised quarter, or superstructure decks :—

" " " Goose Neck Horn 3 @ 1" 2' 1"

All air papers are closed in accordance with Rule requirements.

Particulars of Gangway Cargo and Coaling Ports:—

CLOSED BY STEEL HINGED DOOR 40 THICK. SECURED BY STEEL STRONG-BACK WITH SCREWED HANDLE ✓

Particulars of Scuppers and Sanitary Discharge Pipes :—

SCUPPERS AND DISCHARGES FROM SPACES IN POOP DISCHARGE THROUGH TWO NON-RETURN STORM VALVES, ON ONE NON-RETURN STORM VALVE CONTROLLED FROM ABOVE UPPER DECK. ✓

NO SCUPPERS OR DISCHARGES FROM BRIDGE & FORECASTLE SPACES. ✓

The bridge space is drained direct to the freeboard deck through 2 drain holes in the bridge end bulkhead, the holes being provided with screw plugs.

The forecabin space is drained by 2-2" scuppers discharging through the shell about 8" below the freeboard deck with a skewed plug at the freeboard deck.

Particulars of Side Scuttles :—

of Side Scuttles:—		10" dia.									
<u>POOR</u>	14P.	23S.	B.RASS	SUBSTANTIAL	CONSTRUCTION.	CAST IRON	DEADLIGHTS	✓			
<u>BRIDGE</u>	4P.	5S.	"	8" dia	"	"	"	"	"	"	✓
<u>FONECASTLE</u>	2S.		"	8"	"	"	"	"	"	"	✓

Vertical distance of Sill of lowest Side Scuttle above top of keel NO SIDE SCUTTLES BELOW FREEBOARD DECK

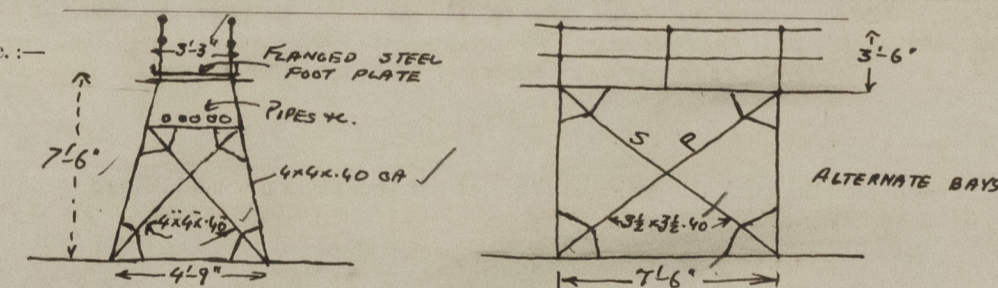
Particulars of Guard Rails :—

POOF. BRIDGE AND FORECASTLE:- 3'-6" HIGH. 3RAILS. STANKIONS SPACED ABOUT 4'-9" APART (WELDED TO DECK)

FREEBOARD DECK: RAILS 3'-6" " 3 " " " " 5'-0" " " " "

BULKHEADS:- (SEE SKETCH) 3'-6" HIGH 30" THICK, 7" BA. ROLL BAR. 6" B.P. STAYS SPACED ABOUT 6'-0" APART. EXTRA STIFFENING ARRANGED IN VICINITY OF ERECTION BULKHEADS.

Particulars of Gangways, Lifelines, etc. :—

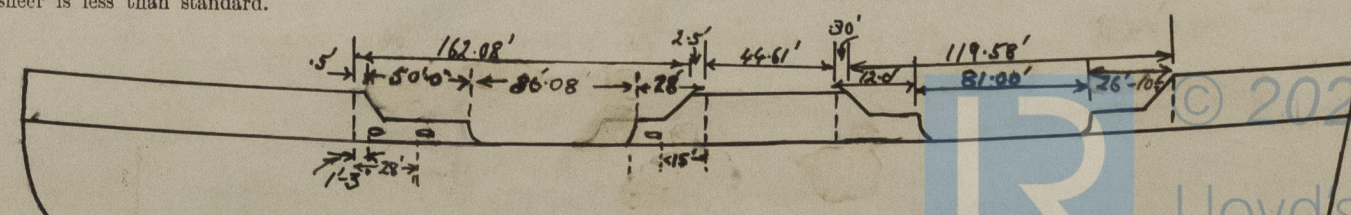


Particulars of Freeing Arrangements.						
	Length of Bulwark	Height of Bulwark	Size of Freeing Ports	Number each side	Area each side	Rule area each side
After Well	78'-0"	3'-6"	$\left. \begin{array}{l} 5'-0" \times 9' \\ 6'-0" \times 9' \\ 4'-9" \times 9' \end{array} \right\} \text{ ————— }$	3	more than 50% open rails 118 sq. FT.	TANNER
Forward Well	38'-10 1/2"	3'-6"	NONE		more than 50% open rails	

State position of each freeing port { After Well:—
(F. and A. position and height above deck edge) { Forward Well:— } AS PER SKETCH. (13" ABOVE DECK)

State whether the freeing ports are fitted with shutters, bars, or rails, and give particulars of such:—

Additional area where sheer is less than standard.



PARTICULARS OF PROTECTION TO OPENINGS, ETC.

HATCHWAYS ON FREEBOARD AND SUPERSTRUCTURE DECKS. IN FCLG									
← ON UPPER DECK → ON ROOF → ON FORECASTLE DECK → ON FBR DH →									
Description of Hatchway
Dimensions of Hatchway
COAMINGS	Height above Deck	10"	7"	DITTO.	22"	34"	9 1/2" x 42"	DITTO.	
	Thickness	.75"	.40"		.40	.44	.44		
	Sides								
	Ends								
Stiffeners	...								
Brackets, Stays	...					6 x 3.8 A			
HATCH BEAMS	Number	...				COVER:-			
	Spacing40" STEEL			
	Scantling and Sketch	...				HINGED			
						W.T. (MACHINE)			
FORE AND AFTERS	Bearing Surface	...	NONE.	NO NE	NONE	STIFFENERS	NONE	NONE	
						4 x 3 x .40"			
						SPACED 30"			
						COVER BEHIND BY SCREWED BUTTERFLY			
HATCH COVERS	Material	...	STEEL	STEEL	STEEL	STEEL	STEEL	STEEL	
	Thickness42	.50	.40	.40	.40	.40	
	How fitted	...	HINGED. O.T.	BOLTED	HINGED W.T.	AS ABOVE.	HINGED W.T.	DITTO.	
	Bearing Surface	...	CLIPS.	3/4" BOLTS SPACED 3 3/4"	CLIPS.		CLIPS.		
Spacing of Cleats	
Number of Tarpaulins	
*Are wood fore and afters steel shod at all bearing surfaces ?									
Are battens and wedges efficient and in good condition ?									
Are tarpaulins in good condition and in accordance with rule requirements ?									
Are lashings provided in accordance with rule requirements ?									

Particulars of any special features:—

Endorsement at first survey and at surveys for renewal of Certificate:—

The fittings and appliances are in accordance with the particulars shown on this form (or as now modified) and are in good condition.

