

# MIDSHIP SECTION.

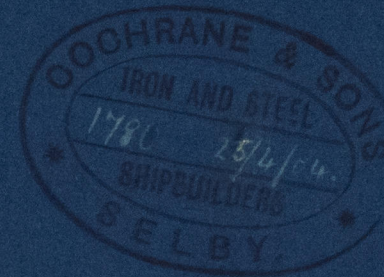
— STEEL SCREW TRAWLER. —

— N<sup>o</sup> 326. —

DIMENSIONS 115' 0" x 21' 6" x 11' 6" DEPTH OF HOLD.

SCALE  $\frac{1}{2}$ " = 1 FOOT.

TO CLASS 100 A.I. FOR FISHING PURPOSES.



Length of Quarter Deck 61' 6" x 12"  
Length of Forecastle Deck 20' 6" x 15'

Casing as previously approved.

Deck plated in way of casing  
4 1/2" double seam

3" x 2 1/2" x 5/16" angle to take spur of bulwark stanchion.

3/4" single lap

6 1/2" x 3" x 5/16". Built angle rail  
3" x 1 1/2" hollow bead iron

5/16" x 5/16"

3/4" single lap

3" x 3" x 5/16" angle

30" x 5/16" to 7/16"

butts strapped

3/4" double lap

54" x 7/16" to 5/16"

butts lapped

3/4" double lap

47 1/2" x 7/16" to 5/16"

butts lapped

3/4" double lap

Butt straps of sheerstrake & garboard strakes to be 1/8" thicker than plates they connect & to be double rivetted, remainder of shell butts lapped & double rivetted.

54" x 7/16" to 5/16"

butts lapped

3/4" double lap

48" x 7/16" to 5/16"

butts lapped

3/4" double lap

5/16" to 7/16" butts strapped.

Stringer 30" x 7/16"

5" x 3" pitch pipe

tie plate 8" x 5/16"

6" Camber.

Stanchions 2 1/2" dia.

Beams

5" x 3" x 5/16" on alternate frames in lieu of 5 1/2" x 3" x 5/16"

Frames

3" x 2 1/2" x 5/16" spaced 20" apart

Rev. D<sup>o</sup>

2 1/2" x 2 1/2" x 5/16" to stringer & deck alternately.

in way of Hold, Quarter Deck & Raised Forecastle Deck & double in E & B. space

Floors

16" x 7/16" to 5/16" & 7/16" in E & B. space

Bulkheads 7/16"

Keel & Stem. 7 1/2" x 1 1/8" bulb

Stern Post 6" x 2 1/2"

Rudder Head 4 1/4" dia

T. iron stanchions 6" x 3" x 5/16" in thwart bunker

5" x 4" x 5/16" single angles.

double angles 4" x 3" x 5/16"

7 1/2" x 7/16" bulb.

## Equipment.

1 Bower Anchor	5 cwt	ex stock
1 " "	4 1/2 "	" "
1 " "	2 1/2 "	" "
90 Stathoms	1" short link cable	
90 " "	5/2" hawser	
60 " "	4" Warp.	

## Lloyds Numbers.

1/2 Girth	19.00
1/2 Breadth	10.71
Depth	12.778
	42.488 1 <sup>st</sup> 1 <sup>st</sup>
	113.875
	4883.88 2 <sup>nd</sup> 1 <sup>st</sup>
Depth to Length	8.91
Breadth to Length	5.554

5" x 4" x 5/16" single angles

40ft Rolling Chock  
7" bulb 3" x 3" x 5/16" angles.

Cochrane & Son  
Shipbuilders

Selby



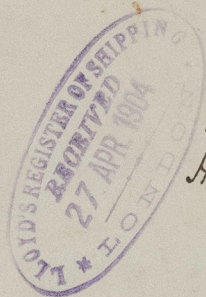
Lloyd's Register  
Foundation



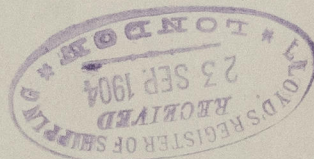
N<sup>o</sup> 326

Midship Section

Cochrane & Sons  
Selby



s/s "Ingomar"  
Hull Report N<sup>o</sup> 16304



© 2020

Lloyd's Register  
Foundation