

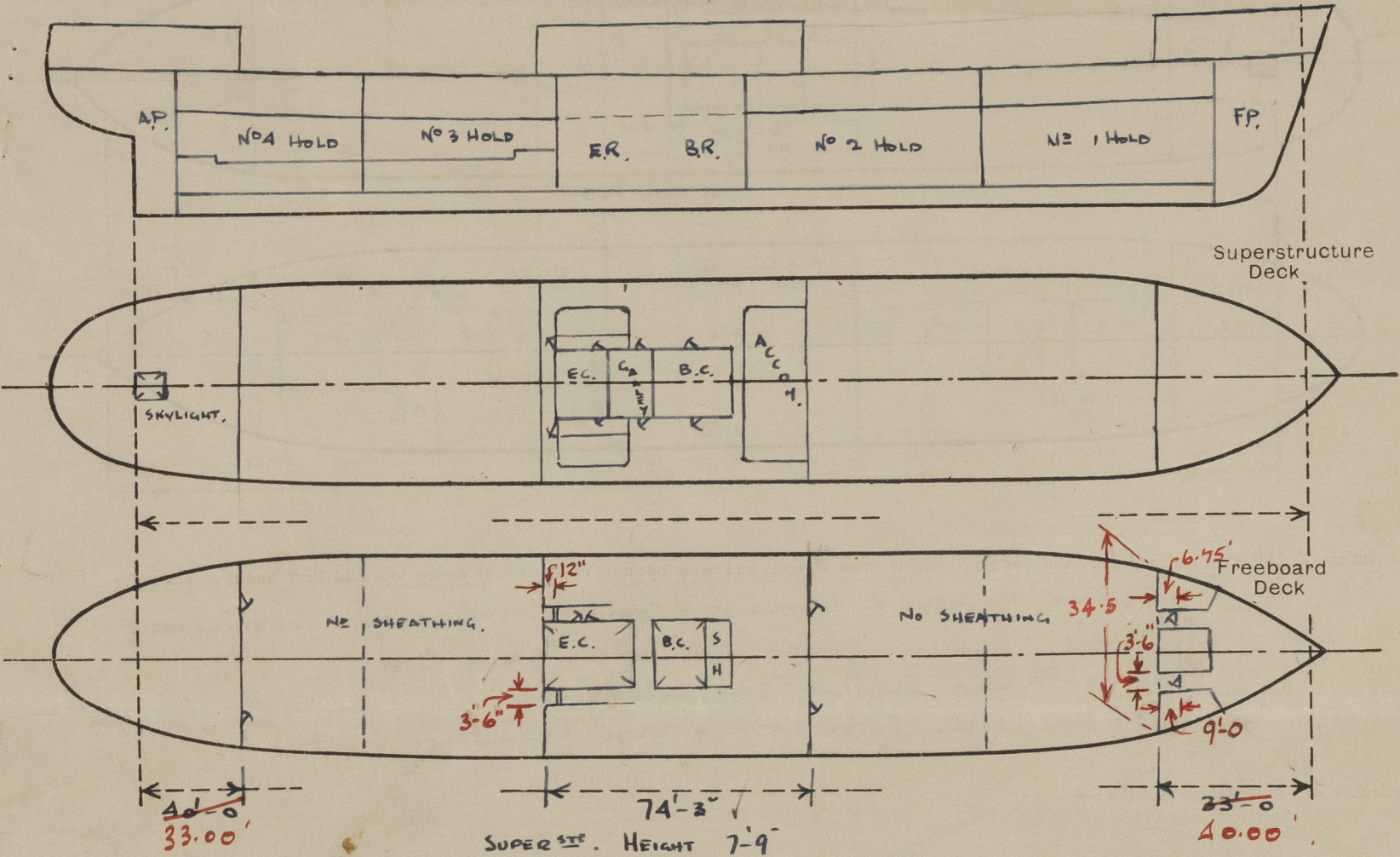
Lloyd's Register of Shipping.
SURVEYS FOR FREEBOARD.
(CONDITIONS OF ASSIGNMENT.)

Index No. _____
(For London Office only.)

15 APR 1950

Ship's Name.....SAMARANG MARU.....Port of Survey.....OSAKA.....
Official Number.....Surveyor's Signature.....
Nationality and Port of Registry.....JAPAN TOKYO.....Date of Survey.....MARCH 1950.....

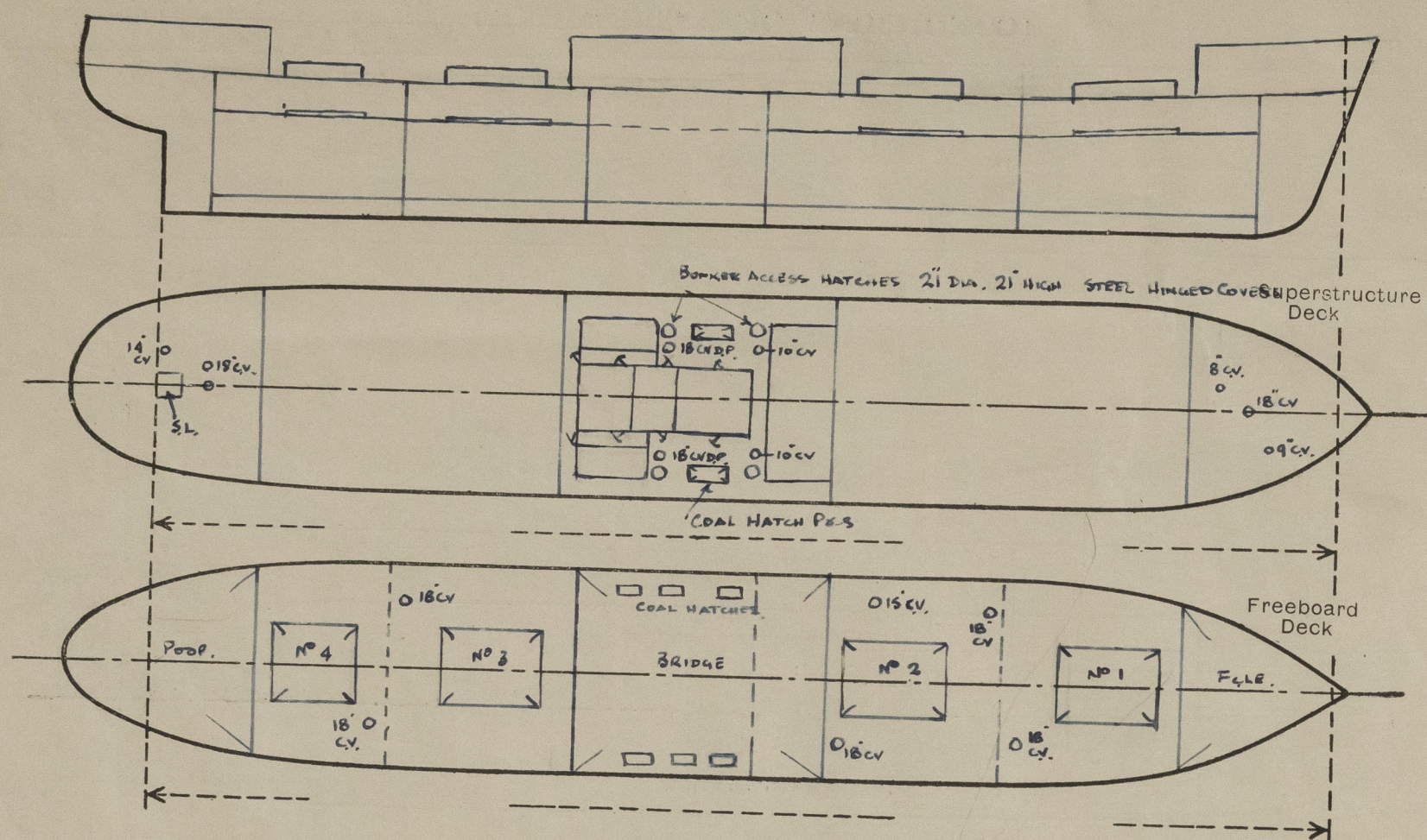
Disposition and dimensions of superstructures, trunks, deckhouses and machinery casings to be inserted in the diagrams and tabular statement :—



Particulars of Superstructures, Trunks, Casings, Deckhouses.								
	Coaming	Plating	Stiffeners	Spacing	End Attachments of Stiffeners	Size of Openings	Height of Sills	Height of Casings
Poop Bulkhead		7/16" ✓	6 x 3 x 3/16 L ✓	30" ✓	NONE	2 @ 5'-3" x 30"	21"	7'-9" ✓
Raised Quarter Deck Bulkhead ...		5/16" ✓	3 x 3 x 5/16 L ✓	30" x 27" ✓	NONE ✓	2 @ 5'-3" x 27"	—	7'-9" ✓
Bridge, After Bulkhead		7/16" ✓	8 x 3 1/2 x 6 1/8 BA ✓	30" ✓	BRKT'D ✓	2 @ 5'-3" x 30"	24"	7'-9" ✓
Forecastle Bulkhead... ..		5/20" ✓	3 x 3 x 5/16 L ✓	27" x 30" ✓	NONE ✓	2 @ 5'-3" x 3-6	18"	7'-9" ✓
Trunk, Aft		—	—	—	—	—	—	—
Trunk, Forward		—	—	—	—	—	—	—
Exposed Machinery Casings on Freeboard or Raised Quarter Decks ...	40"	5/16"	3 x 3 x 5/16 L	30" x 27"	NONE	—	—	—
Exposed Machinery Casings on Superstructure Decks	40"	5/16"	3 x 3 x 7/16 L	33"	NONE	1 P x 5'-0" x 2'-3"	21" ✓	7'-9" ✓
Machinery Casings within Superstructures not fitted with Class I Closing Appliances	40"	5/16"	3 1/2 x 3 x 5/16 L	30"	NONE	5'-3" x 6'-0"	18" ✓	7'-9" ✓
Deckhouses on Flush Deck Ships ...		—	—	—	—	—	—	—
Particulars of Closing Appliances (state if capable of being manipulated from both sides).								
Poop Bulkhead	HINGED W.T. DOORS OF STEEL MANIPULATED ^ FROM BOTH SIDES. AND SECURED ✓							
Raised Quarter Deck Bulkhead ...	—							
Bridge, After Bulkhead	STORM BOARDS 2 1/2" THICK IN CHANNELS full. 1/2" HEIGHT OF CASING. AND SECURED ✓							
Bridge, Forward Bulkhead	HINGED W.T. DOORS OF STEEL MANIPULATED ^ FROM BOTH SIDES. AND SECURED ✓							
Forecastle Bulkhead... ..	HINGED SOLID WOODS MANIPULATED ^ FROM BOTH SIDES. AND SECURED ✓							
Exposed Machinery Casings on Freeboard or Raised Quarter Decks ...	—							
Exposed Machinery Casings on Superstructure Decks	HINGED STEEL DOORS MANIPULATED ^ FROM BOTH SIDES AND SECURED ✓							
Machinery Casings within Superstructures not fitted with Class I Closing Appliances	HINGED STEEL DOORS MANIPULATED ^ FROM BOTH SIDES. AND SECURED ✓							
Deckhouses on Flush Deck Ships ...	—							

PARTICULARS OF PROTECTION TO OPENINGS, ETC.

The following diagrams should be used to indicate the positions of cargo and coaling hatchways, gangway, cargo and coaling ports, ventilators, companionways, etc., which would affect the seaworthiness of the ship:—



Particulars of fiddle, funnel and ventilator coamings, engine room skylight and other openings in machinery casing tops and their means of closing:—

FIDDLE FUNNEL & VENTILATOR COAMINGS EFFICIENTLY CONSTRUCTED.
FIDDLE GRATING CLOSED WITH HINGED STEEL COVERS.
ENGINE ROOM SKYLIGHT EFFICIENTLY CONSTRUCTED AND FITTED WITH HINGED STEEL COVER (FITTED WITH PERMANENT LIGHTS.)

Particulars of Flush Bunker Scuttles:—

Particulars of Companionways:—

Particulars of Ventilators in exposed positions on freeboard and superstructure decks:—

ALL VENTILATOR COAMINGS 30" MINIMUM HEIGHT ON SUPERSTRUCTURE DECKS SUBSTANTIALLY CONSTRUCTED AND FITTED WITH WOOD PLUGS AND CANVAS COVERS.

ALL VENTILATOR COAMINGS 36" HEIGHT ON FREEBOARD DECK SUBSTANTIALLY CONSTRUCTED AND FITTED WITH WOOD PLUGS AND CANVAS COVERS.

Particulars of Air Pipes in exposed positions on freeboard, raised quarter, or superstructure decks:—

ALL AIR PIPES OF STEEL. HEIGHT ABOVE FILE DECK:— 18"
BRIDGE DECK:— 18"
POOP DECK:— 18"
UPPER DECK:— 36"

ALL FITTED WITH WOOD PLUGS AND CANVAS COVERS.

Particulars of Gangway Cargo and Coaling Ports:—

NONE
(NOTE: GANGWAY/COALING DOORS IN SHIP AS BUILT NOW)
PLATED OVER, AND PERMANENTLY SEALED.

Particulars of Scuppers and Sanitary Discharge Pipes:—

ALL SCUPPERS FROM POOP ACCOMMODATION
BRIDGE " } LED BELOW FREEBOARD DECK AND FITTED
FILE " } WITH STORM H.R. VALVES ON SHELL.

Particulars of Side Scuttles:—

SIDE SCUTTLES FITTED IN CREW ACCOMMODATION (POOP, BRIDGE & FILE)
WITH STRONGLY CONSTRUCTED FRAMES AND
FITTED WITH HINGED BEADLIGHTS.

Vertical distance of Sill of lowest Side Scuttle above top of keel 34'-0"

Particulars of Guard Rails:—

POOP DECK - RAILS 36" HIGH - 2 RODS. STANCHIONS 5'-0" APART MAX
BRIDGE " - " 3'-6" - 4 RODS. " 5'-0" " "
FILE " - " 3'-6" - EFFICIENTLY STAYED. " 5'-0" " "
UPPER " - RAILS 3'-3" - 3 RODS. STANCHIONS 5'-0" " "
" - BULWARK 3'-9" - EFFICIENTLY STAYED 6'-0" " "

Particulars of Gangways, Lifelines, etc.:—

MANILLA LIFELINES FITTED IN F&A WELLS

Particulars of Freeing Arrangements.

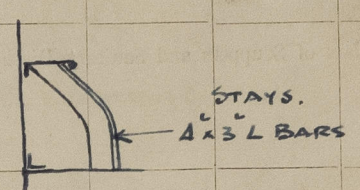
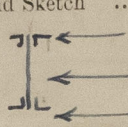
	Length of Bulwark	Height of Bulwark	Size of Freeing Ports	Number each side	Area each side	Rule area each side
After Well ...	99'-0"	3'-9"	5'-1" x 1'-4"	3	20.33 sq. ft.	19.8 sq. ft.
Forward Well ...	98'-0"	3'-9"	5'-1" x 1'-4"	3	20.33 sq. ft.	19.6 sq. ft.

State position of each freeing port ... { After Well:— FROM POOP FRONT:— 11'-0", 53'-0", 81'-6" }
(F. and A. position and height above deck edge) { Forward Well:— FROM BRIDGE FRONT:— 11'-0", 45'-0", 86'-0" } 10" ABOVE DECK.

State whether the freeing ports are fitted with shutters, bars, or rails, and give particulars of such:— FITTED WITH VERTICAL BARS 8" APART MAX

Additional area where sheer is less than standard.

PARTICULARS OF PROTECTION TO OPENINGS, ETC.

HATCHWAYS ON FREEBOARD AND SUPERSTRUCTURE DECKS.									
Description of Hatchway	Nº 1	Nº 2	Nº 3	Nº 4	P & S. COAL HATCHES		
Dimensions of Hatchway	27'-6" x 18'-0"	33'-0" x 18'-0"	30'-3" x 18'-0"	27'-6" x 18'-0"	8'-3" x 5'-0"		
COAMINGS	Height above Deck	...	34" ✓	do. ✓	do. ✓	do. ✓	30" ✓		
	Thickness { Sides	...	7/16" ✓	do. ✓	do. ✓	do. ✓	do. ✓		
	Stiffeners	7-3 x 4-0 BA ✓	do. ✓	do. ✓	do. ✓			
	Brackets, Stays	...	STAYS MAX. 9'-0" APART. AND AT C ON ENDS. ✓						
HATCH BEAMS	Number	...	5 ✓	7 ✓	6 ✓	5 ✓			
	Spacing	...	4'-7" ✓	4'-1 1/2" ✓	4'-4" ✓	4'-7" ✓			
	Scantling and Sketch	...		do. ✓	do. ✓	do. ✓			
	Bearing Surface	...	3" ✓	do. ✓	do. ✓	do. ✓			
FORE AND AFTERS	Number	...	Rule 7/4	Rule 7/4	Rule 7/4	Rule 7/4			
	Spacing	...	84.75	78.0	81	84.75			
	Unsupported Lengths	...	Prof. = 47.6	Prof. = 47.6	Prof. = 47.6	Prof. = 47.6			
	Scantling* and Sketch	...	55% ?	61%	59%	56%			
HATCH COVERS	Material	...	WOOD	do.	do.	do.	do.		
	Thickness	...	2 3/8"	do.	do.	do.	do.		
	How fitted	...	F & A ✓	do. ✓	do. ✓	do. ✓	do. ✓		
	Bearing Surface	...	3"	do.	do.	do.	ATHWART.		
Spacing of Cleats	24" MAX.	do.	do.	do.	do.		
Number of Tarpaulins...	2 HIND	do.	do.	do.	do.		
*Are wood fore and afters steel shod at all bearing surfaces? ✓ Are battens and wedges efficient and in good condition? YES ✓ Are tarpaulins in good condition and in accordance with rule requirements? YES ✓ Are lashings provided in accordance with rule requirements? YES. ✓									

Particulars of any special features:—

ACCESS HATCHES TO BUNKERS — 2 P & S. — POSITION AS ON DIAGRAM II. ✓
 21" DIAM. 21" HIGH — FITTED WITH HINGED STEEL W.T. COVERS.



© 2020

Lloyd's Register
Foundation