

Lloyd's Register of Shipping.

SURVEYS FOR FREEBOARD.

(COMPUTATION FOR STEAMER, SAILING SHIP, TANKER.)

Ship's Name "SHILLONG"	Official Number 182960	Nationality and Port of Registry British London.	Gross Tonnage 8934	Date of Build 1949.	Port of Survey NEWCASTLE-ON-TYNE
Moulded Dimensions: Length 490.0 Breadth 67.0 Depth 34.51					Date of Survey While building
Moulded displacement at moulded draught = 85 per cent. of moulded depth 17838 tons					Surveyor's Signature G. Campbell.
Coefficient of fineness for use with Tables 68. (6483 actual.)					Particulars of Classification *100A1 with Freeboard (contemplated.)

DEPTH FOR FREEBOARD (D). Moulded depth ... 34.51 Stringer plate (.54")04 Sheathing on exposed deck $T \left(\frac{L-S}{L} \right) = \text{nil.}$ Depth for Freeboard (D) = 34.55	DEPTH CORRECTION. (a) Where D is greater than Table depth (D-Table depth) R = $(34.55 - 32.67) 3 = 1.88 \times 3 = 5.64$ (b) Where D is less than Table depth (if allowed) (Table depth-D) R = If restricted by superstructures <input checked="" type="checkbox"/>	ROUND OF BEAM CORRECTION. Moulded Breadth (B) 67.0 Standard Round of Beam = $\frac{B \times 12}{50} = 16.08$ Ship's Round of Beam = 0 Difference 16.08 Restricted to <input checked="" type="checkbox"/> Correction = $\frac{\text{Diff}^\circ}{4} \times \left(1 - \frac{S_1}{L} \right) = 4.02 \times .0055 = +0.02$
---	--	---

DEDUCTION FOR SUPERSTRUCTURES.

COMBINED
BRIDGE &

	Mean Covered Length (S)	Equivalent Enclosed Length (S ₁)	Height	Height Correction	Effective Length (E)
Poop enclosed ...	41.0	41.0	8.61	✓	41.0
" overhang ...	0.75	0.37	8.61	✓	0.37
R.Q.D. enclosed ...					
" overhang ...					
Bridge enclosed ...					
" overhang aft ...					
" overhang forward ...					
F'cle enclosed ...	443.25	443.25	8.52	✓	443.25
" overhang ...					
Trunk aft ...					
" forward ...					
Tonnage opening aft ...	5.0	2.69	8.61	✓	2.69
" " forward ...					
Total ...	490.0	487.31			487.31

Standard Height of Superstructure **7.5'**

" " R.Q.D. **✓**

Deduction for complete superstructure **42"**

Percentage covered $\frac{S}{L} = 100.$

" " $\frac{S_1}{L} =$ } **99.45** ✓

" " $\frac{E}{L} =$ } **99.32** ✓

Percentage from Table, Line A. **99.32** ✓
(corrected for absence of forecastle (if required))

Percentage from Table, Line B. **✓**
(corrected for absence of forecastle (if required))

Interpolation for bridge less than .2L (if required) **✓**

Deduction = **42 × .9932 = 41.71** ✓

+ 12.24 (P.T.O.) ✓ SHEER CORRECTION.

Station	Standard Ordinate	S	M	Product	Actual Ordinate	Effective Ordinate	S	M	Product
A.P. ...	59.00	1		59.00	66.12	78.36	1		78.36
$\frac{1}{2}$ L from A.P. ...	26.255	4		105.02	27.59	34.87	4		139.48
$\frac{3}{8}$ L " ...	6.49	2		12.98	7.18	8.62	2		17.24
Amidships ...	0	4		0	0	0	4		0
$\frac{3}{8}$ L from F.P. ...	12.98	2		25.96	15.81	17.19	2		34.38
$\frac{1}{2}$ L " ...	52.51	4		210.04	63.18	69.53	4		278.12
F.P. ...	118.00	1		118.00	144.00	156.24	1		156.24
Total ...				531.00	+12.24				703.82

Correction = $\frac{\text{Difference between sums of products}}{18} \left(.75 - \frac{S}{2L} \right) = \frac{172.82}{18} \times .25 = -2.40$ ✓

If limited on account of midship superstructure. ✓

Mean actual sheer aft =
Mean standard sheer aft =Mean actual sheer forward =
Mean standard sheer forward =

Length of enclosed superstructure forward of amidships =

" " aft of " =

Deduction for Tropical Freeboard.

Addition for Winter and Winter North Atlantic Freeboard.

Depth to Freeboard Deck = **34.55** Ft.
 Summer freeboard = **5.06**
 Moulded draught (d) = **29.49**

Deduction for Tropical freeboard and addition for

Winter freeboard = $\frac{d}{4}$ inches = **7.37 = 7 1/4"**

Addition for Winter North Atlantic Freeboard (if required) = ✓

Deduction for Fresh Water.

Displacement in salt water at summer load water line
 $\Delta = 18053$
 Tons per inch immersion at summer load water line
 $T = 59.96$
 Deduction = $\frac{\Delta}{40 T}$ inches **7.53**
7 1/2" ✓

TABULAR FREEBOARD corrected for Flush Deck (if required)

Correction for coefficient **nil.**

Depth Correction ... **5.64**
 Deduction for superstructures ... **41.71**
 Sheer correction ... **2.40**
 Round of Beam correction ... **0.02**
 Correction for Thickness of Deck amidships ...
 Other corrections, scantlings, etc. ...

+	-
5.64	
-	41.71
-	2.40
0.02	
-	
-	
5.66	44.11

Summer Freeboard = **60.85** ✓

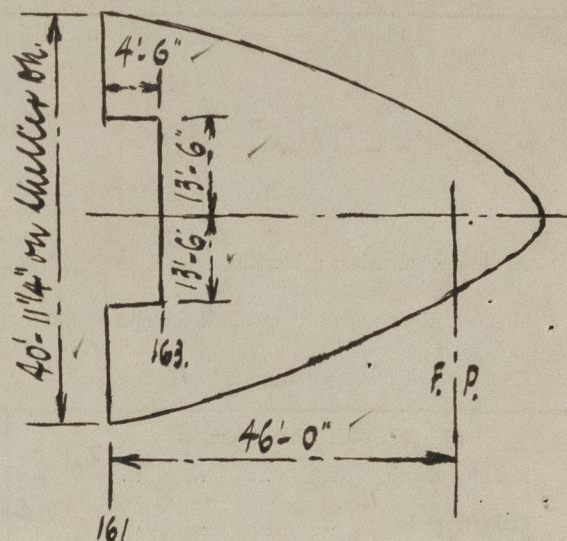
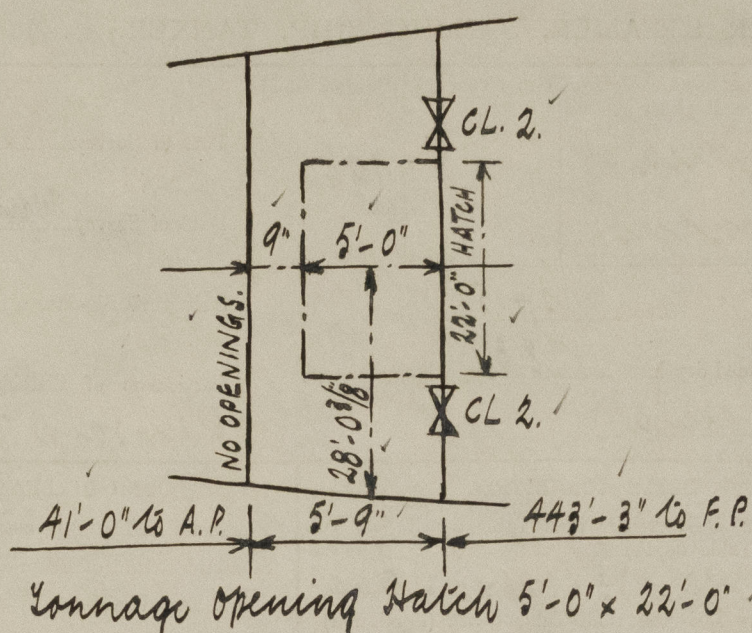
SUMMER FREEBOARD amidships from Centre of Disc to top of Deck Line, Wood, Steel, Deck :-

Tropical Fresh Water Line above Centre of Disc ...	14 3/4"
Fresh Water Line " " ...	7 1/2"
Tropical Line " " ...	7 1/4"
Winter Line below " " ...	7 1/4"
Winter North Atlantic Line " " ...	-

Tropical Fresh Water Freeboard ...	3 - 10
Fresh Water " " ...	4 - 5 1/4
Tropical " " ...	4 - 5 1/2
Winter " " ...	5 - 8
Winter North Atlantic " " ...	-

Shillong.

A new form should be prepared if any alterations that affect the freeboard have been made. If no such alterations have been made, the Surveyor should endorse the form on this side with his signature and the date.



Freeboard on shelter deck.

Height = 7'-4 1/2" at Fr. 161
" = 7'-5 3/4" " F.P.

Note: 2 1/2" thick sheathing on exposed shelter deck, extending from stern to 41'-0" forward of A.P.
Shelter Deck Round of Beam = 6"

<u>Draught</u>	<u>Displacement</u>	<u>T. P. I.</u>
31'	19090	61.08 ✓
30'	18363	60.31 ✓
29'	17645	59.54 ✓
28'	16936	58.77 ✓

Depth mid. to shelter deck = 43'-0.09" ✓
Stringer Plate = 0.78" ✓
43'-0.87" = 43.07" ✓
D = 34.55 ✓
Midship Tween deck height = 8.52' ✓
Standard Height = 7.50 ✓
Excess = 1.02' = 12.24" ✓

Trade of ship U.K. - China.

Names of sister ships "SURAT" (Vickers-Armstrongs Ltd No 103)

Builder's name and yard number Vickers-Armstrongs Ltd No 104.

Owners P. T. O. Steam Nav. Co.

Fee £ To be charged with first entry.



© 2021

Lloyd's Register
Foundation