

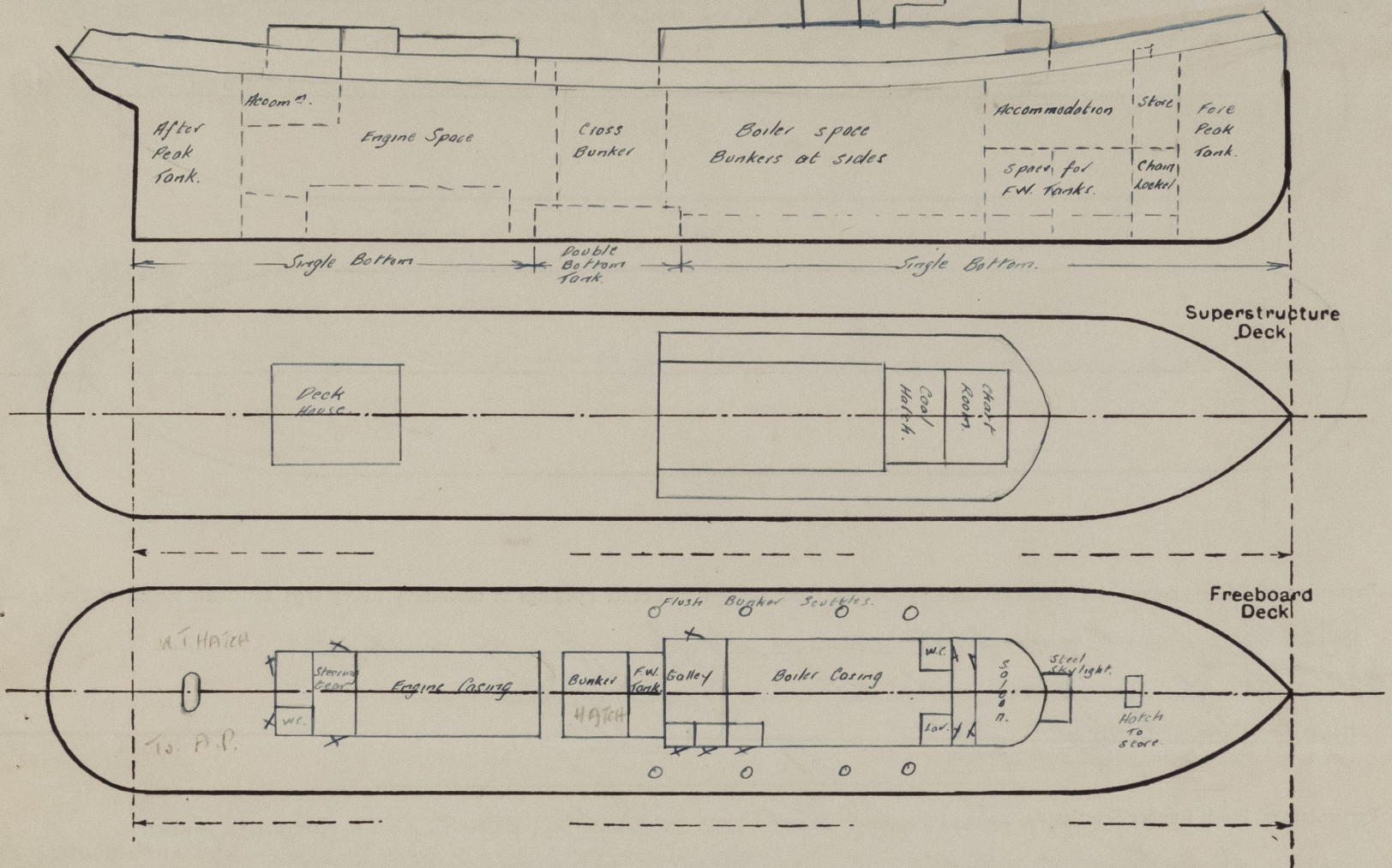
Lloyd's Register of Shipping.

SURVEYS FOR FREEBOARD.

(CONDITIONS OF ASSIGNMENT.)

Ship's Name St. Kitts Port of Survey Sydney N.S.W.
 Official Number 143780 Surveyor's Signature J. J. Levine
 Nationality and Port of Registry British. Sydney N.S.W. Date of Survey 28-10-53 to 20-5-54

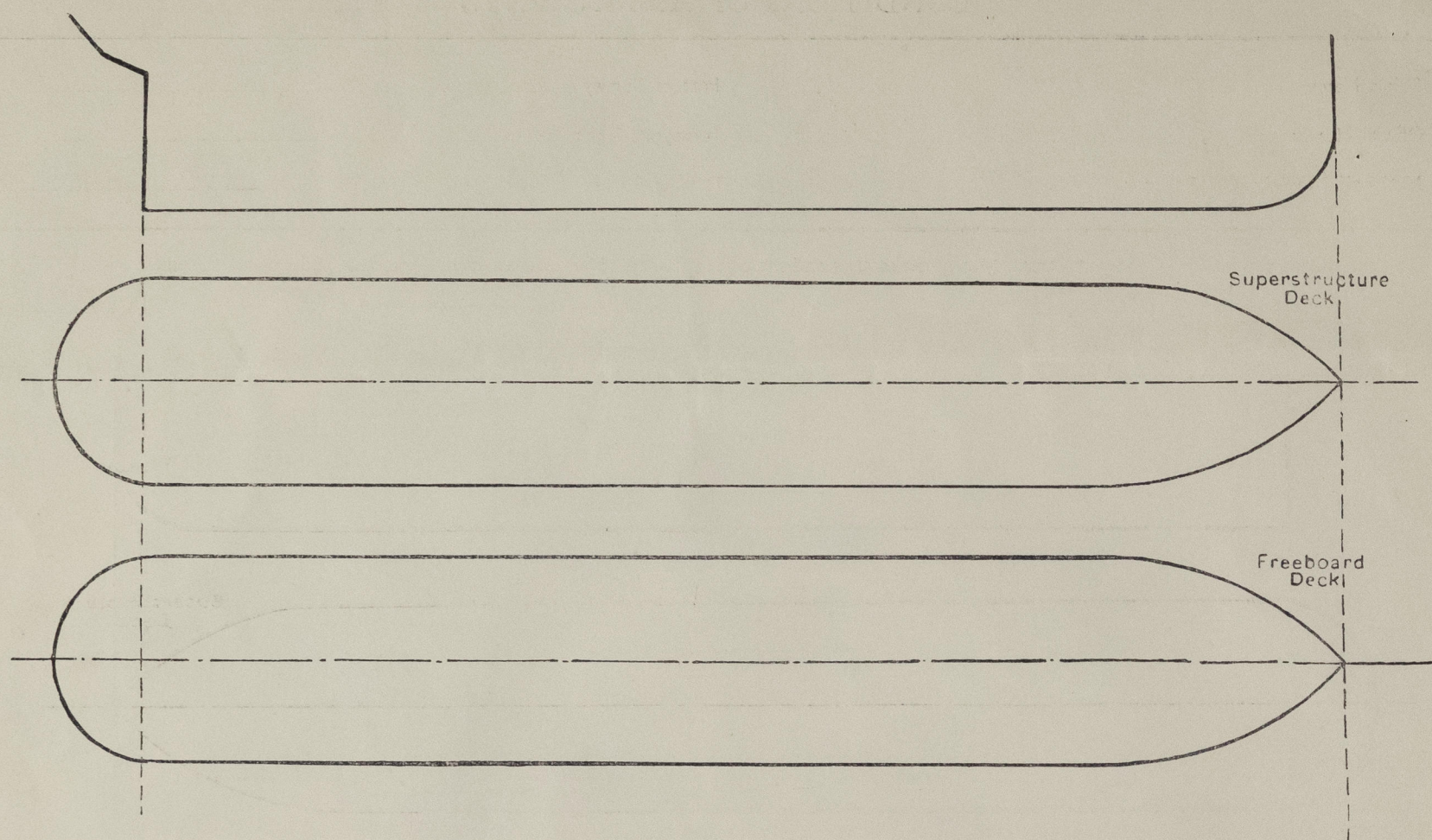
Disposition and dimensions of superstructures, trunks, deckhouses and machinery casings to be inserted in the diagrams and tabular statement:—



Particulars of Superstructures, Trunks, Casings, Deckhouses								
	Coaming	Plating	Stiffeners	Spacing	End Attachments of Stiffeners	Size of Openings	Height of Sills	Height of Casings
Poop Bulkhead	✓							
Raised Quarter Deck Bulkhead	✓							
Bridge, After Bulkhead	✓							
Bridge, Forward Bulkhead	✓							
Forecastle Bulkhead	✓							
Trunk, Aft	✓							
Trunk, Forward	✓							
Exposed Machinery Casings on Freeboard or Raised Quarter Decks	Engines "24" ✓	"20" ✓	2 1/2" x 2 1/2" x 24 ✓	24" ✓	Brackets at Top ✓	4'4" x 2'2" ✓	24" ✓	3'6" ✓
Exposed Machinery Casings on Superstructure Decks	Boilers "24" ✓	"20" ✓	3" x 3" x 3 ✓	36" ✓	Brackets at Top ✓	5'0" x 2'0" ✓	24" ✓	7'6" ✓
Machinery Casings within Superstructures not fitted with Class 1 Closing Appliances	✓							
Deckhouses on Flush Deck Ships	"24" ✓	"20" ✓	2 1/2" x 2 1/2" x 24 ✓	36" ✓	Brackets at Top ✓	4'8" x 2'0" ✓	18" ✓	6'6" ✓
Particulars of Closing Appliances (state if capable of being manipulated from both sides)								
Poop Bulkhead	✓							
Raised Quarter Deck Bulkhead	✓							
Bridge, After Bulkhead	✓							
Bridge, Forward Bulkhead	✓							
Forecastle Bulkhead	✓							
Exposed Machinery Casings on Freeboard or Raised Quarter Decks	Hinged steel doors. Operated from both sides. ✓							
Exposed Machinery Casings on Superstructure Decks	✓							
Machinery Casings within Superstructures not fitted with Class 1 Closing Appliances	✓							
Deckhouses on Flush Deck Ships	Hinged steel doors. Operated from both sides. ✓							

PARTICULARS OF PROTECTION TO OPENINGS, ETC.

The following diagrams should be used to indicate the positions of cargo and coaling hatchways, gangway, cargo and coaling ports, ventilators, companionways, etc., which would affect the seaworthiness of the ship:—



Particulars of fiddle, funnel and ventilator coamings, engine room skylight and other openings in machinery casing tops and their means of closing:—

Fiddle, funnel & ventilator coamings strongly & efficiently constructed.
Fiddle openings fitted with steel covers & locking bars. ✓
Engine room skylight of steel strongly constructed.

Particulars of Flush Bunker Scuttles:— Four each side, 20" diameter. Cast iron covers fitted with bayonet joints, locking bars & chains. ✓

Particulars of Companionways:— Entrance to crew accommodation forward & aft in, strongly constructed steel deckhouse.
Forward: Hardwood doors 4'8" x 2'0" - 24" high, jill-operated from both sides. ✓
Aft: Hardwood doors 4'8" x 2'0" - 24" high, jill-operated from both sides. ✓

Particulars of Ventilators in exposed positions on freeboard and superstructure decks:—

To crew accommodation forward: 4 cast iron, swan neck vents 38" high 14" diameter. ✓
1 - 8" diameter vent. Coaming 30" x 30". ✓
To spaces below crew acc. forward: 2 cast iron, swan neck vents 34" high 14" diameter. ✓
To bunkers: 2 cast iron, swan neck vents 4" diameter 27" high. ✓
To engine room: 2 - 12" diameter vents, coaming 36" x 30". ✓
To crew accommodation aft: 2 - 8" diameter vents, coaming 30" x 30". ✓
Vents fitted with wood plugs & canvas covers. ✓

Particulars of Air Pipes in exposed positions on freeboard, raised quarter, or superstructure decks:—

To fore peak tank: 1 - 4" diameter 41" high. adequately supported. ✓
To space below boiler room floor: 2 - 4" diameter 30" high. ✓
To double bottom tank: 2 - 3 1/2" diameter 26" high. ✓
To after peak tank: 2 - 3 1/2" diameter 26" high. ✓
Air pipes fitted with wood plugs. ✓

Particulars of Gangway Cargo and Coaling Ports:— None ✓

St. Kitts.

Particulars of Scuppers and Sanitary Discharge Pipes:—

Six deck scuppers each side. ✓
Three 4" diameter soil pipes from W.C. led overboard below freeboard deck with brass stormwater at ship's side. ✓
Three 3" diameter soil pipes from washplace led overboard below freeboard deck with brass stormwater at ship's side. ✓
Three 2" diameter soil pipes from galley led overboard below freeboard deck with brass stormwater at ship's side. ✓

Particulars of Side Scuttles:—

Below freeboard deck.
To crew accommodation forward: 8-9" diameter gunmetal, sidelights fitted with hinged deadlights. ✓

Vertical distance of Sill of lowest Side Scuttle above top of keel 15'6" ✓

Particulars of Guard Rails:— Efficient bulwarks 36" high ✓

Particulars of Gangways, Lifelines, etc.:— Flush deck, ship. ✓

Particulars of Freeing Arrangements						
	Length of Bulwark	Height of Bulwark	Size of Freeing Ports	Number each side	Area each side	Rule area each side
After Well	135'0" ✓	3'6" ✓	2'6" x 1'0" ✓	6	15.4 ft. ✓	135.4 ✓
Forward Well						
State position of each freeing port (F. and A. position and height above deck edge) <div> After Well:— </div> Forward Well:—						
State whether the freeing ports are fitted with shutters, bars, or rails, and give particulars of such:— Hinged steel shutters. ✓ Additional area where sheer is less than standard. Lower edge of freeing ports 6" above deck. ✓						

005443-005452-0063 2/2

PARTICULARS OF PROTECTION TO OPENINGS, ETC.

HATCHWAYS ON FREEBOARD AND SUPERSTRUCTURE DECKS									
	FREEBOARD DECK.			Casing Top					
Description of Hatchway	Store	Bunker	After Peak Tank.				Bunker		
Dimensions of Hatchway	2'0" x 1'6"	10'0" x 5'6"	2'6" x 1'6"				10'6" x 8'2"		
COAMINGS	Height above Deck	10"	36"	12"			34"		
	Thickness	Sides 32"	32"	38"			34"		
		Ends 32"	32"	38"			28"		
	Stiffeners	✓	6" x 3" x .38"	✓			28"		
Brackets, Stays	✓	Bulb angle After end.	✓			✓			
HATCH BEAMS	Number	None	None	None			1		
	Spacing						4'1"		
Scantling and Sketch							9 3/4" x 5" Plate	2 1/2" x 2 1/2" x .38 Angles.	
Bearing Surface							2 1/2"		
FORE AND AFTERS	Number	None	None	None			None		
	Spacing								
Unsupported Lengths									
Scantling* and Sketch									
Bearing Surface									
HATCH COVERS	Material	W.T. steel	Wood.	W.T. steel			Wood		
	Thickness	Cover fitted	2 1/2"	Cover			2 1/2"		
	How fitted	with	Fore & Aft.	fitted			Fore & Aft.		
	Bearing Surface	toggles and	2 1/2"	toggles			2 1/2"		
Spacing of Cleats	buttershy	24"	and			24"			
Number of Tarpaulins	nuts.	2	buttershy			2			
			nuts.						
*Are wood fore and afters steel shod at all bearing surfaces? <input checked="" type="checkbox"/> Are battens and wedges efficient and in good condition? <input checked="" type="checkbox"/> Are tarpaulins in good condition and in accordance with rule requirements? <input checked="" type="checkbox"/> Are lashings provided in accordance with rule requirements? <input checked="" type="checkbox"/>									

Particulars of any special features:— *Shore tug usually engaged in local towing at Newcastle N.S.W. and occasionally making ocean voyages.*

Endorsement at first survey and at surveys for renewal of Certificate:—

The fittings and appliances are in accordance with the particulars shown on this form (or as now modified) and are in good condition.

