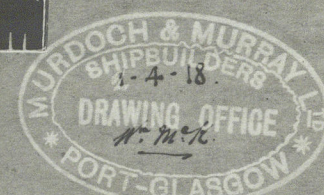


9/14/18

# RESCUE TYPE.

## SINGLE SCREW TUGS NOS 287 & 8. AFT END BULKHEADS.

SCALE 1/2" = 1'-0"



MARK	NO	LENGTH	BREADTH	THICKNESS	REMARKS
B.H. 13	1	12'-0"	2'-0"	3/8"	
2	1	14'-0"	2'-0"	3/8"	
3	1	10'-0"	2'-0"	3/8"	
4	1	14'-0"	2'-0"	3/8"	
A.P.B. 14	3	30'-0"	5'-5"	2"	WOOD CONNECTIONS
15	3	22'-0"	2'-0"	2"	STIFFERS (TO CUT)

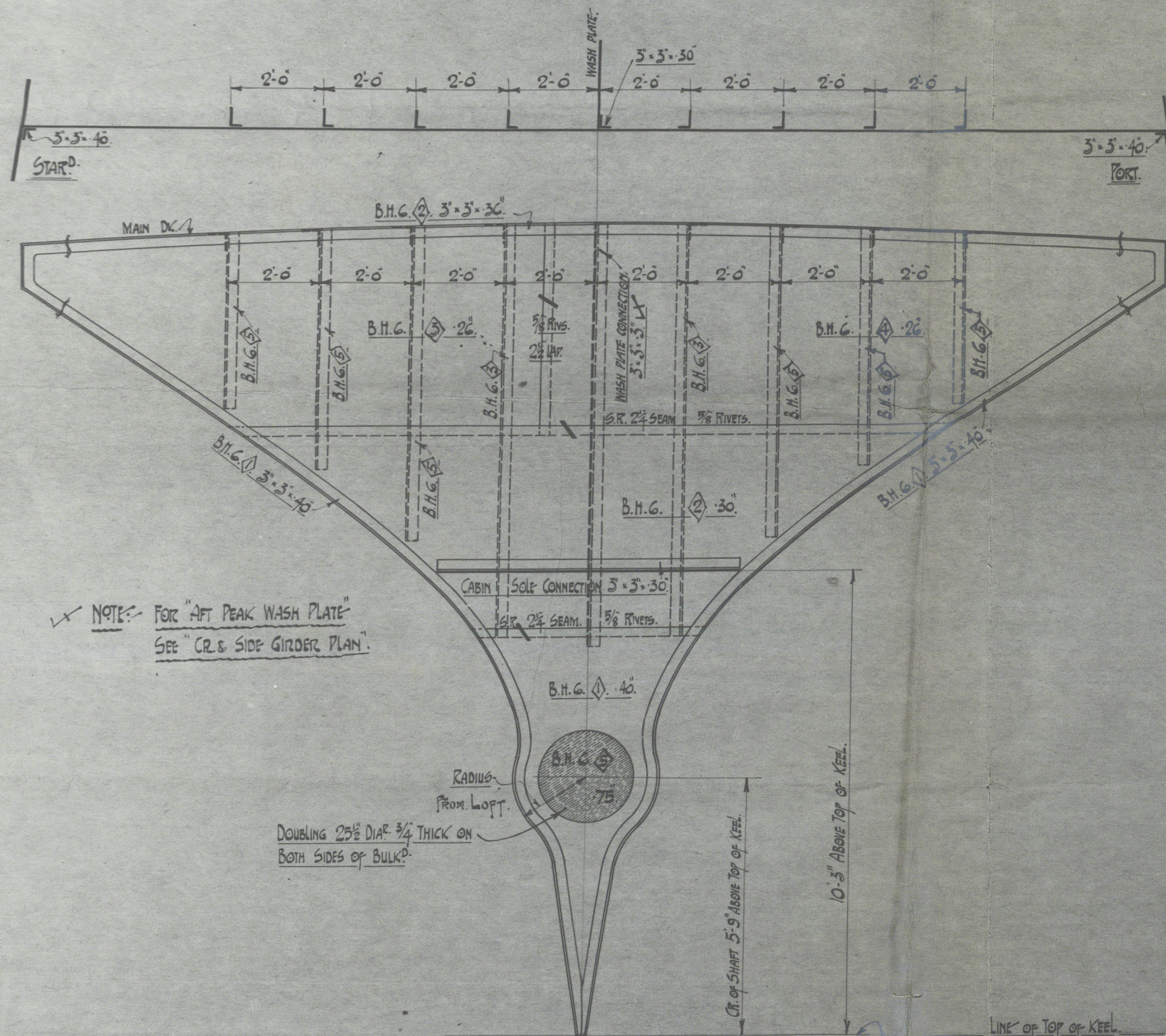
MARK	NO	LENGTH	BREADTH	THICKNESS	REMARKS
B.H. 27	1	30'-0"	5'-5"	3/8"	BEAM.
2	1	23'-0"	5'-5"	3/8"	TANK CONNECTION.
3	1	20'-0"	5'-5"	3/8"	FRAMING JOINT.
4	1	22'-0"	5'-5"	3/8"	
5	1	21'-0"	5'-5"	3/8"	
6	1	24'-0"	5'-5"	3/8"	B.H. BHD STIFFERS (TO CUT)

MARK	NO	LENGTH	BREADTH	THICKNESS	REMARKS
S.T.C. 1	2	24'-0"	5'-5"	3/8"	FRAMES.
2	1	22'-0"	5'-5"	3/8"	FRAMES.
3	1	20'-0"	5'-5"	3/8"	FRAMES.
4	1	17'-0"	5'-5"	3/8"	FRAMES.
5	1	30'-0"	5'-5"	3/8"	FRAMES.

MARK	NO	LENGTH	BREADTH	THICKNESS	REMARKS
B.H. 6	1	13'-0"	5'-5"	3/8"	FRAMES.
2	1	16'-0"	5'-5"	3/8"	FRAMES.
3	1	14'-0"	5'-5"	3/8"	FRAMES.
4	1	15'-0"	5'-5"	3/8"	FRAMES.
5	2	2'-0"	2'-0"	3/8"	STIFF DOWLS.

DETAIL of LUG CONNECTION TO DECK AT TOP OF EACH STIFFER.

5'-5" x 3/8" LUGS 5'-5" x 5". FOUR RIVETS IN EACH FLANGE.  
STIFFER 5'-5" x 3/4".



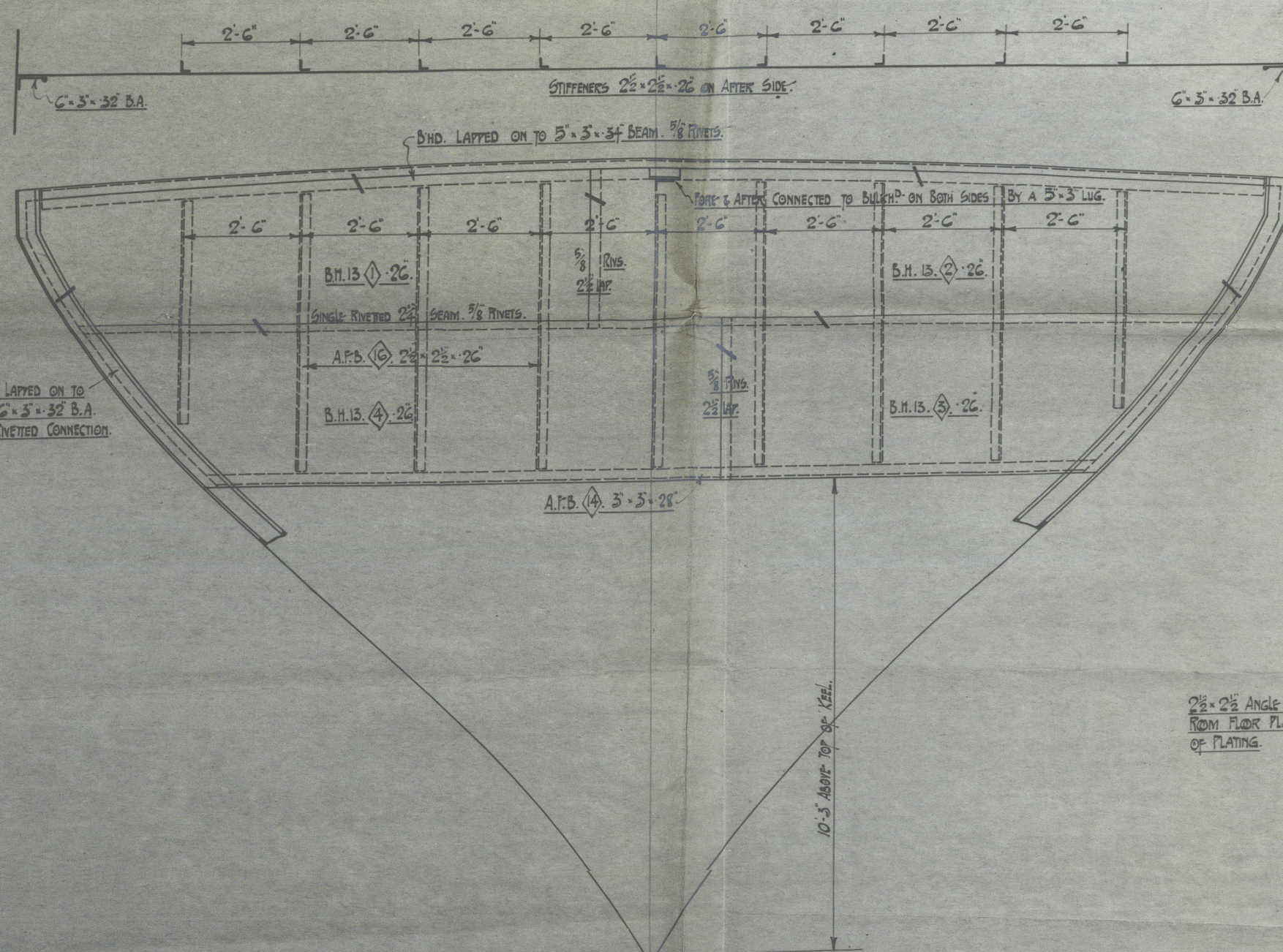
NOTE: FOR AFT PEAK WASH PLATE SEE "CR. 6 SIDE GIRDER PLAN".

AFT PEAK W.T. BHD. ON FR. 6.  
LOOKING AFT.

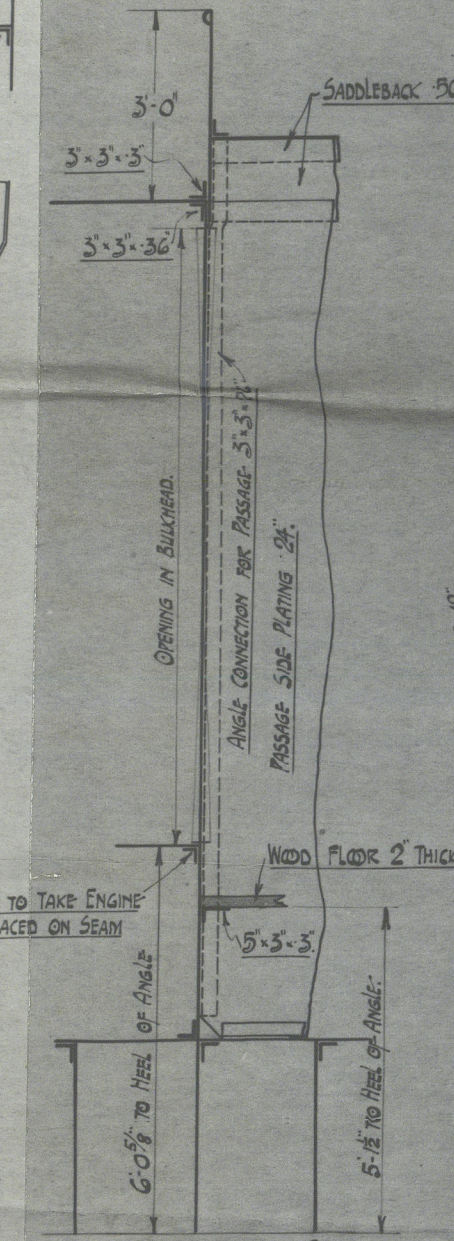
STIFFERS ON AFTER SIDE 5'-5" x 3/4" ANGLES.

### RIVETING

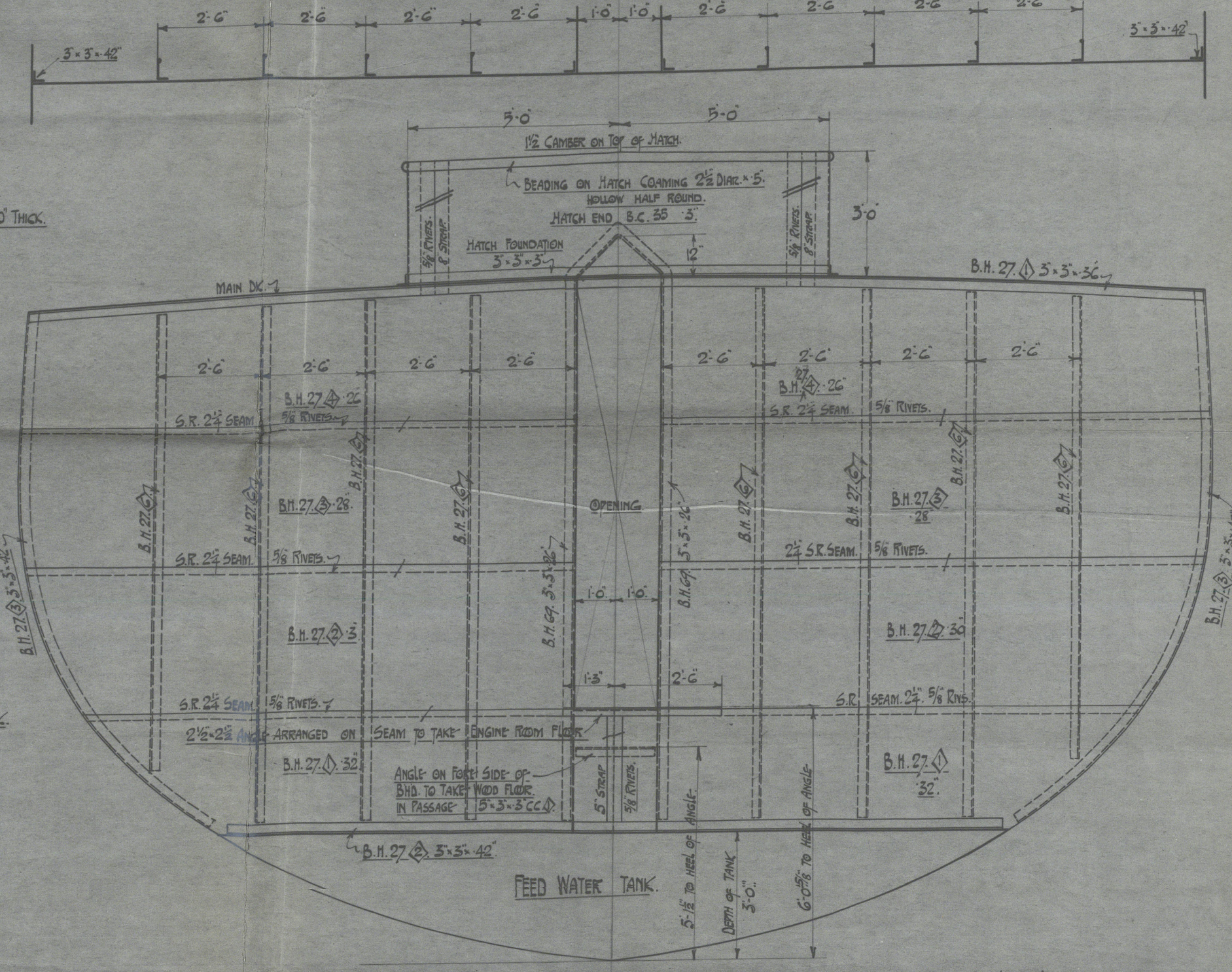
RIVETING OF ALL BEAMS & BUTTS 3/8" RIVETS SPACED 2 3/4" APART. CR. TO CR.  
RIVETS CONNECTING STIFFERS TO PLATING OF AFTER PEAK BHD. ON FR. 6. 3/8" DIA. SPACED 3 1/2" APART. CR. TO CR.  
BULKHEADS ON FR. 13 & 27.  
ON STIFFERS HAVING LUGGED ATTACHMENTS OR NO END ATTACHMENTS, THE SPACING OF RIVETS TO BEATING IS TO BE 2 1/2" FOR 3/8" RIVETS. FOR 1/2" OF THE LENGTH OF STIFFER FROM EACH END BHD. FR. TO SHELL PLATING. 3/8" RIVETS SPACED 3 1/2" APART CR. TO CR.  
RIVETS IN FRAME 13, CONNECTING BHD. PLATING TO ORDINARY FRAMES, ARE SAME DIA. & SPACING AS IN THE CASE OF BHD. FR. TO PLATING. VIZ.: 3/8" DIA. SPACED 2 1/2" APART.



NON W.T. BHD. ON FR. 13.  
LOOKING AFT.  
STIFFERS 2'-0" x 2'-0" B. ANGLES.



NON W.T. BHD.



NON W.T. BUNKER BHD. ON FR. 27.  
LOOKING FORWARD.  
STIFFERS 5'-5" x 3/8" B. ANGLES.

DETAIL of BHD. SHOWING POSITION of ANGLE TO TAKE ENGINE PLATE.

2'-0" x 2'-0" ANGLE ON SEAM.

QTY SENT TO	DATE	NO SENT
LOFT		1
PLATER		2
LOYDS		1

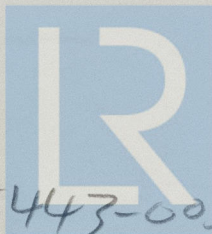


Lloyd's Register Foundation

SS. UCO

AFT END BULKHEADS

D.B. 94TOP



© 2020

Lloyd's Register  
Foundation

005443-005452-0034