

"RESCUE" TYPE.

9/6/18

MARK	NO.	LENGTH	BREADTH	THICK	REMARKS.
B.H. 55	1	10'-8" 6/8	2'-0"	1/2"	TO BUNKER.
2	1	10'-8" 6/8	2'-0"	1/2"	TAPER ONE SIDE.
3	1	11'-7" 1/2	2'-0"	1/2"	
4	1	11'-7" 1/2	2'-0"	1/2"	
5	1	11'-7" 1/2	2'-0"	1/2"	
6	1	11'-7" 1/2	2'-0"	1/2"	
7	1	11'-7" 1/2	2'-0"	1/2"	

MARK	NO.	LENGTH	SCANTLING	THICK	WHERE USED.
B.H. 55	1	20'-0"	2" x 8"	1/2"	FORNIES.
2	1	20'-0"	2" x 8"	1/2"	BEAM.
3	1	20'-0"	2" x 8"	1/2"	FLAT CONNECTION.
4	1	20'-0"	2" x 8"	1/2"	STIFFENING PLATE.
5	1	20'-0"	2" x 8"	1/2"	
6	2	22'-0"	2" x 8"	1/2"	BELOW.

SINGLE SCREW TUGS NOS. 287 & 8. FORE END BULKHEADS.

SCALE 1/2" = 1'-0"



RIVETING.

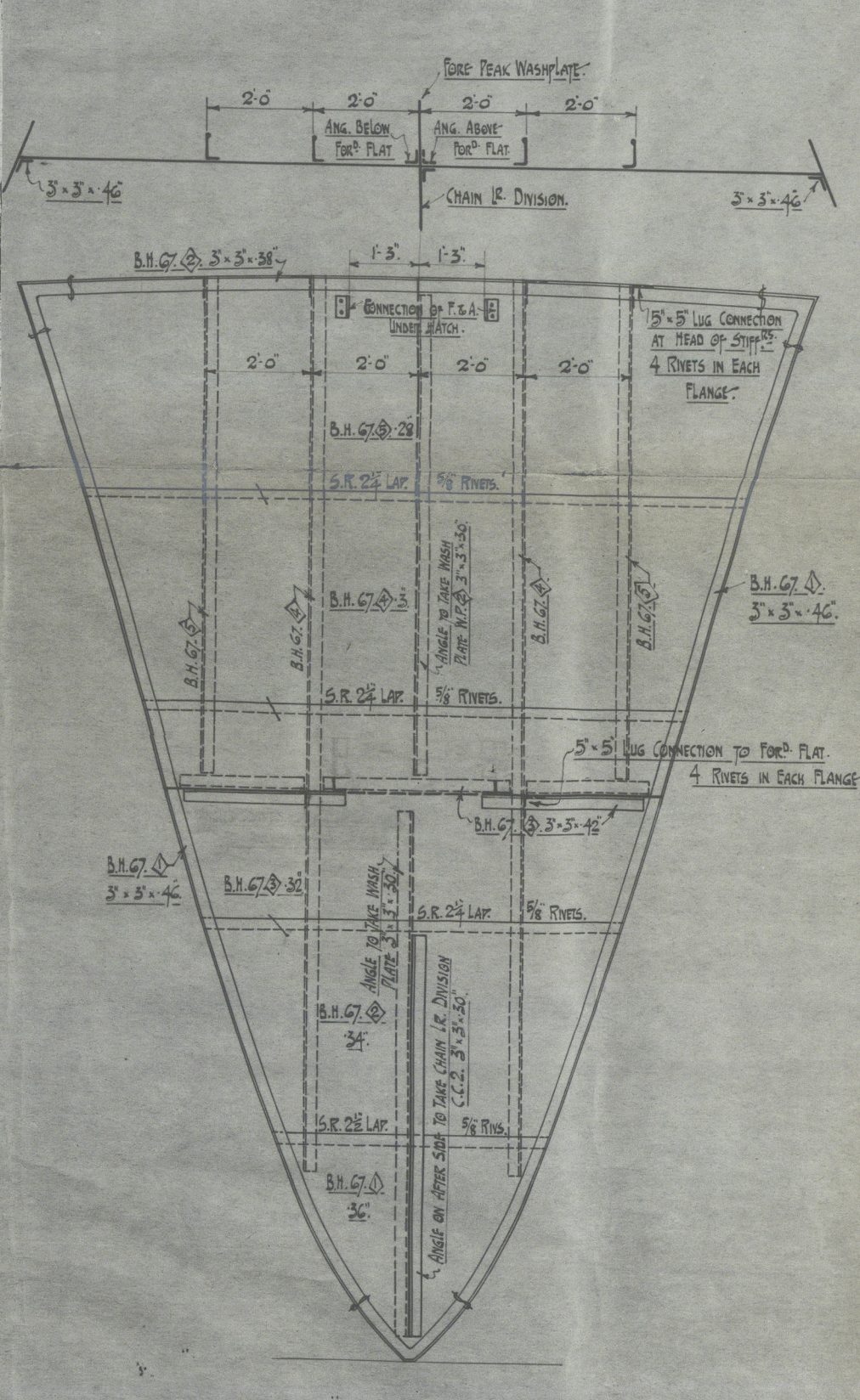
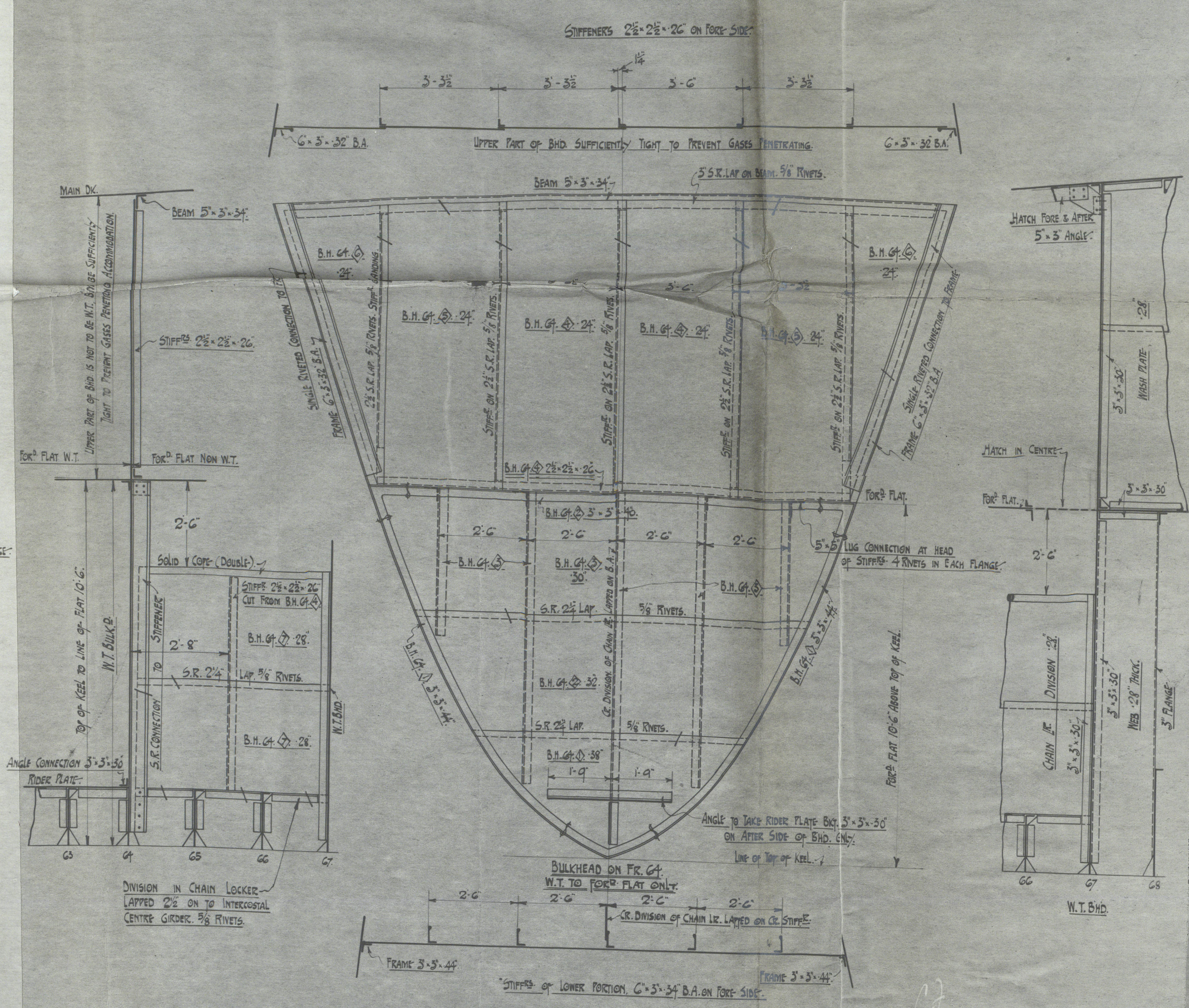
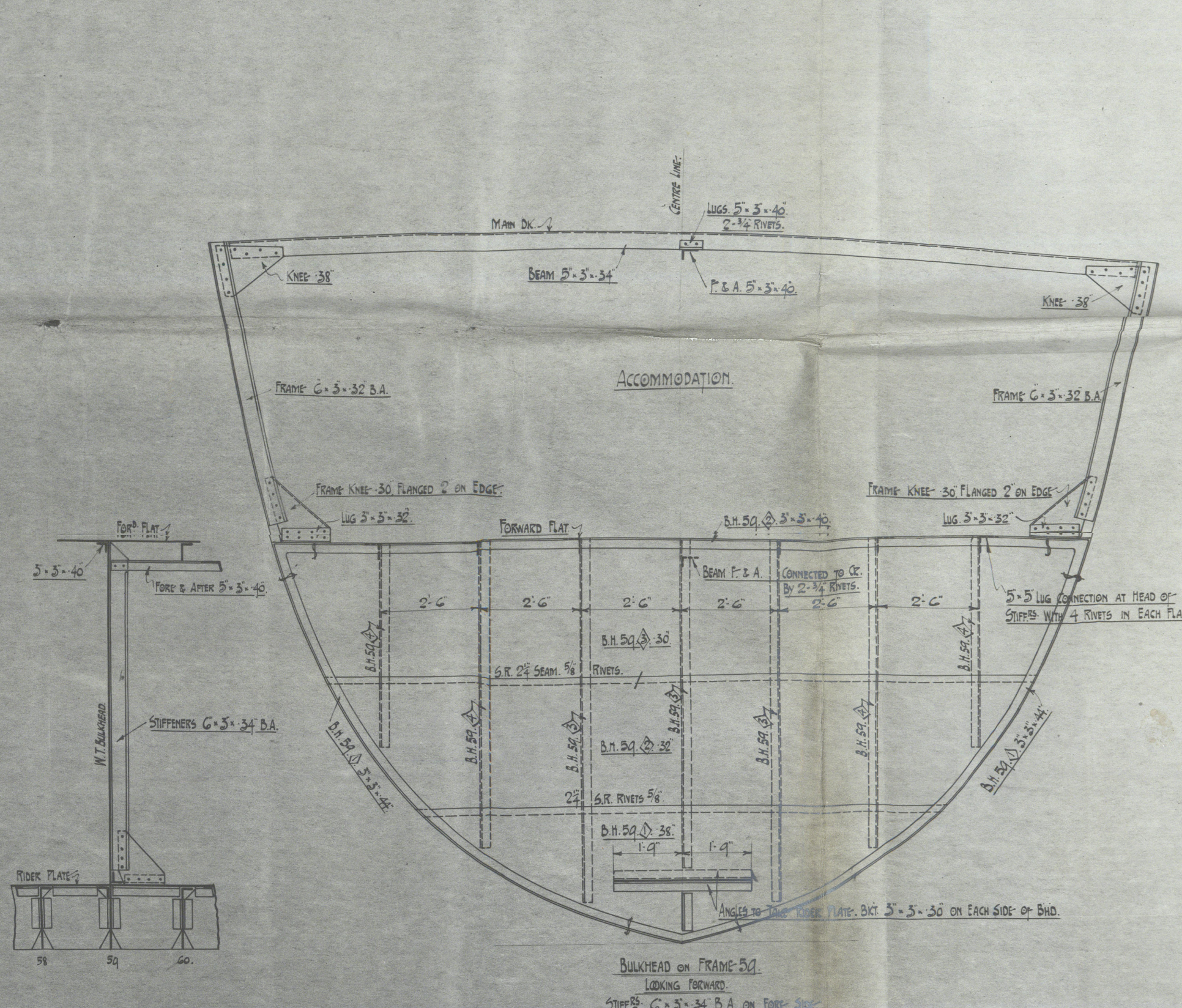
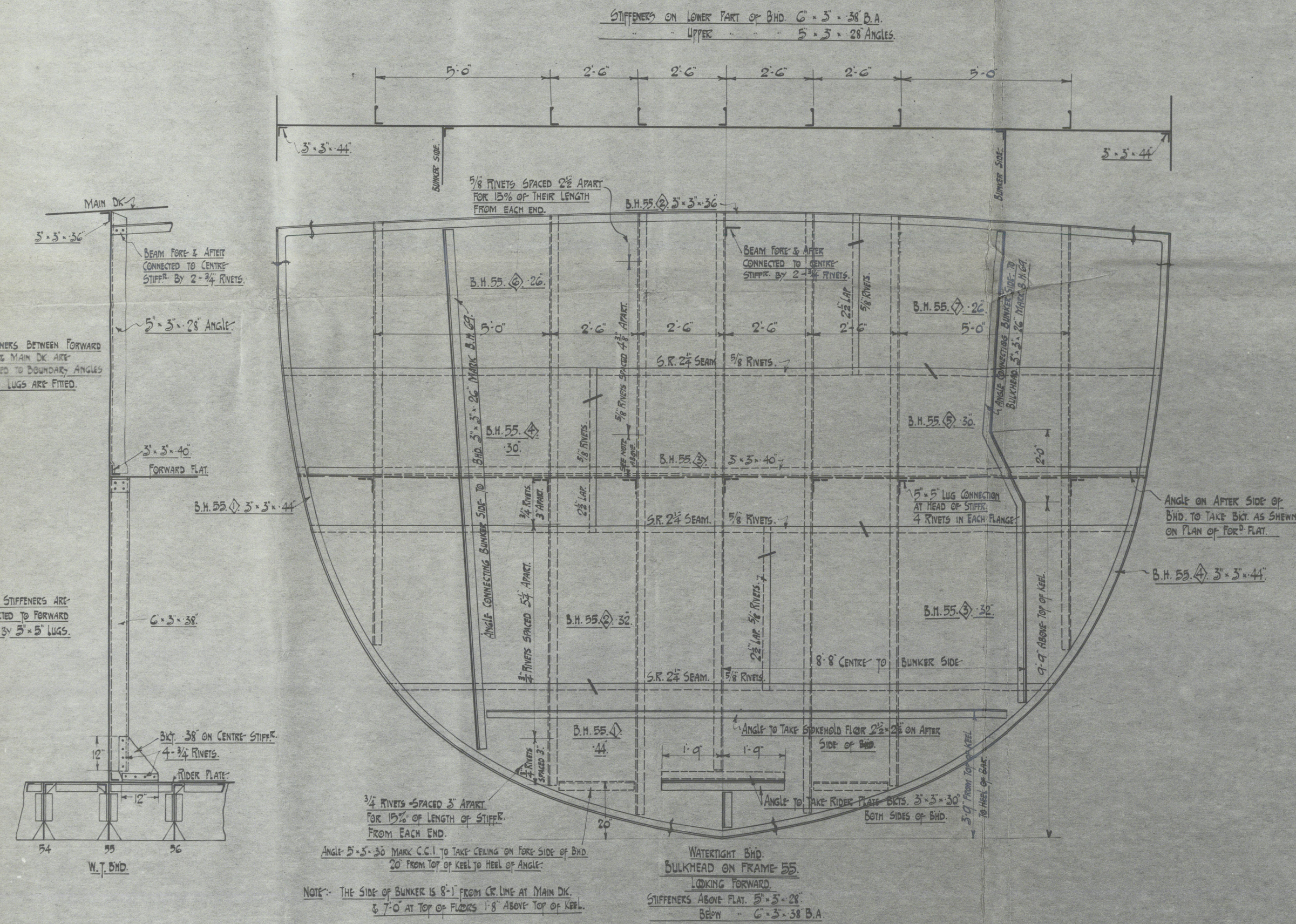
RIVETING OF ALL SEAMS & BUTTS OF BULKHEAD PLATING 5/8" RIVETS SPACED 2 1/2" APART CR TO CR.
RIVETS CONNECTING STIFFENERS TO BULKHEADS B.H. 55 & THE UPPER PART OF B.H. 56 ARE 5/8" DIA. SPACED 4 1/2" APART CR TO CR.
LOWER PART OF B.H. 55 ARE 3/4" DIA. SPACED 3 1/2" APART CR TO CR.
B.H. 57 ARE 1/2" DIA. SPACED 4 1/2" APART CR TO CR.
ON STIFFENERS HAVING LUG ATTACHMENTS OR NO END ATTACHMENTS THE SPACING OF RIVETS TO PLATING ARE TO BE INCREASED TO 2 1/2" FOR 5/8" RIVETS & 3" FOR 3/4" RIVETS FOR 1/2" OF LENGTH OF STIFFENERS FROM EACH END.
STIFFENERS WITHOUT END ATTACHMENTS ARE TO BE RIVETED TO THE BULKHEADS & TO BE RIVETED TO SAME.
B.H. 55 TO SHELL PLATING 5/8" RIVETS SPACED 3 1/2" APART CR TO CR.
B.H. 56 TO SHELL PLATING 5/8" RIVETS SPACED 3 1/2" APART CR TO CR.

MARK	NO.	LENGTH	BREADTH	THICK	REMARKS.
B.H. 55	1	20'-0"	2'-0"	1/2"	
2	1	20'-0"	2'-0"	1/2"	
3	1	20'-0"	2'-0"	1/2"	

MARK	NO.	LENGTH	SCANTLING	THICK	REMARKS.
B.H. 55	1	20'-0"	2" x 8"	1/2"	FORNIES (TO CUT).
2	1	20'-0"	2" x 8"	1/2"	FLAT CONNECTION.
3	1	20'-0"	2" x 8"	1/2"	S.A. STIFFENERS 3" IN CENTRE.
4	1	20'-0"	2" x 8"	1/2"	4 AT SIDES.

MARK	NO.	LENGTH	BREADTH	THICK	REMARKS.
B.H. 55	1	20'-0"	2'-0"	1/2"	TAPER BOTH SIDES.
2	1	20'-0"	2'-0"	1/2"	
3	1	20'-0"	2'-0"	1/2"	
4	2	22'-0"	2'-0"	1/2"	TAPER ONE SIDE.
5	2	22'-0"	2'-0"	1/2"	DIVISION IN CHAIN IR.
6	2	22'-0"	2'-0"	1/2"	
7	2	22'-0"	2'-0"	1/2"	

MARK	NO.	LENGTH	BREADTH	THICK	REMARKS.
B.H. 55	1	20'-0"	2'-0"	1/2"	TAPER BOTH SIDES.
2	1	20'-0"	2'-0"	1/2"	
3	1	20'-0"	2'-0"	1/2"	
4	2	22'-0"	2'-0"	1/2"	TAPER ONE SIDE.
5	2	22'-0"	2'-0"	1/2"	DIVISION IN CHAIN IR.
6	2	22'-0"	2'-0"	1/2"	
7	2	22'-0"	2'-0"	1/2"	



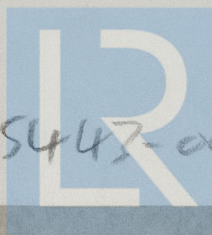
Qty	SENT TO	DATE	BY
1	LOFT		
1	PLATER		
1	WLOYS		

So Ruts

ss. UCO.

FORE BULKHEADS

D. B 94 Top



© 2020

005443-005452-0033
Lloyd's Register
Foundation