

“RESCUE” TYPE.

: FOR THE :

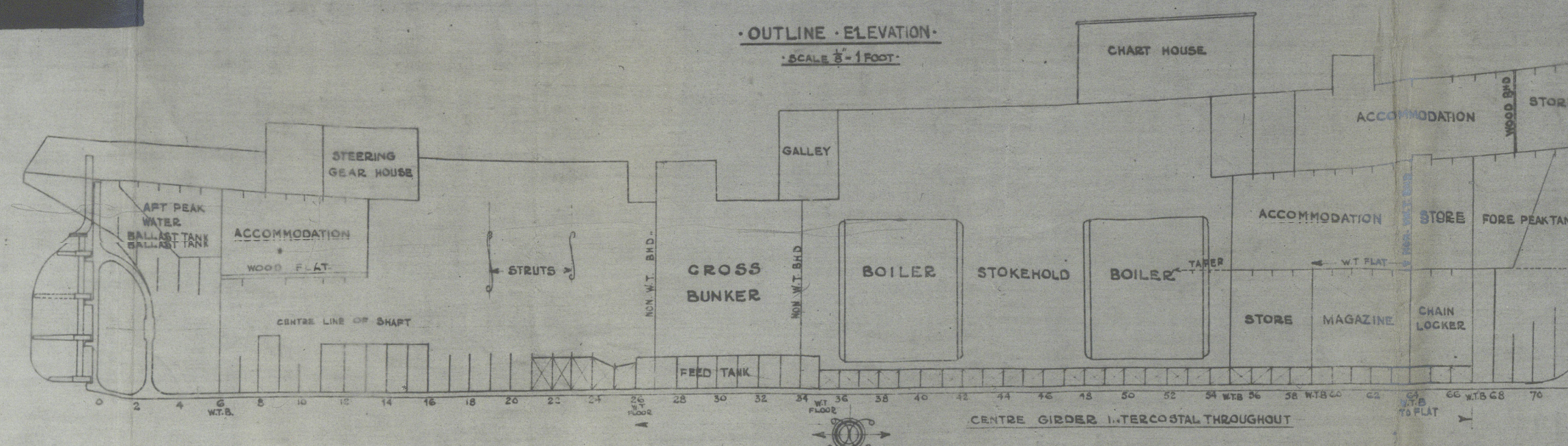
: ADMIRALTY :

DIMENSIONS 135'-0"_{BPX} 29'-0"_{H+P} x 16'-0"_{MLD}

SCALE $\frac{1}{2} = 1$ FOOT

TO CLASS LLOYDS A.1. FOR TOWING PURPOSES

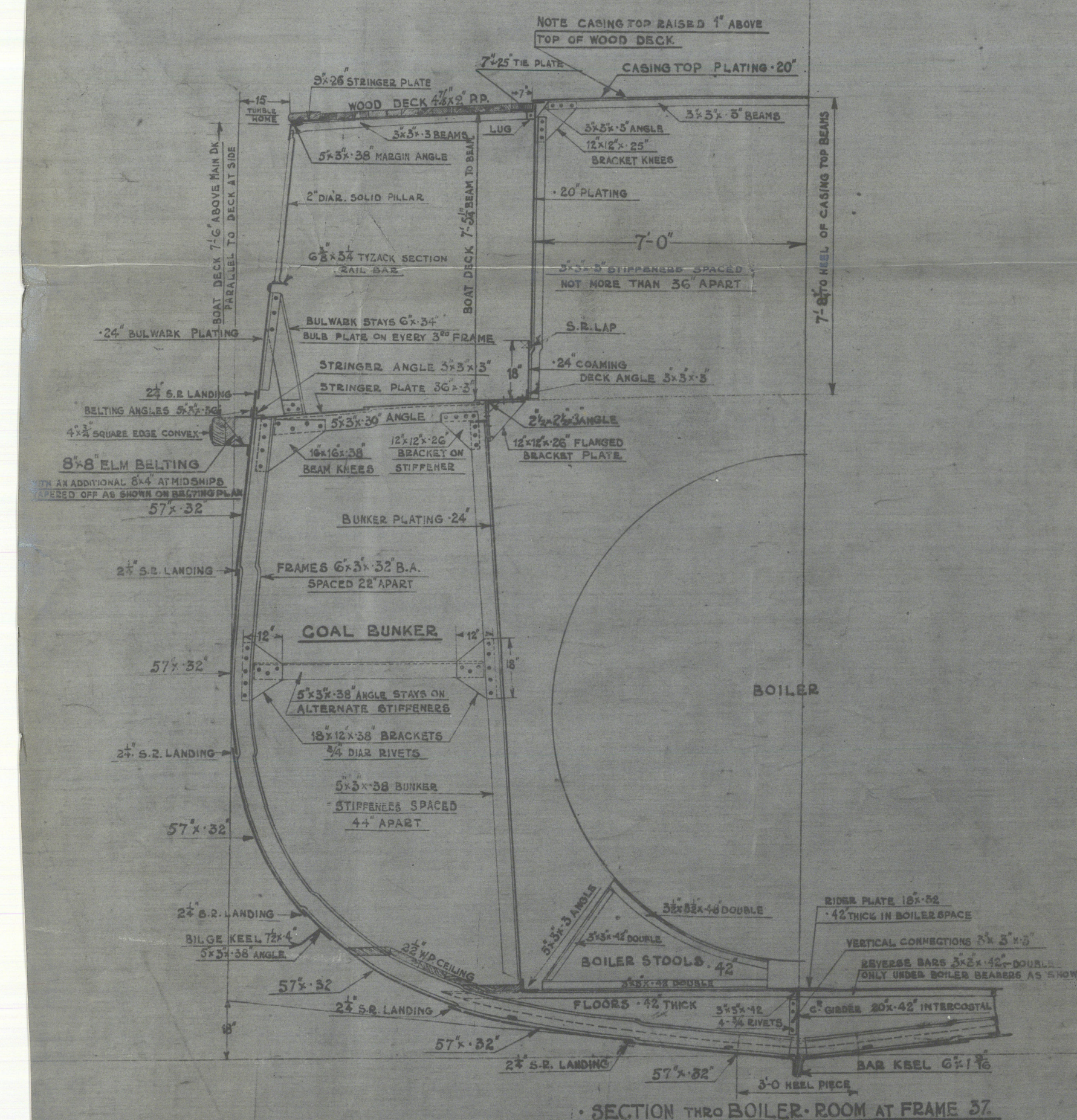
• OUTLINE • ELEVATION
• SCALE $\frac{1}{8}$ " = 1 FOOT •



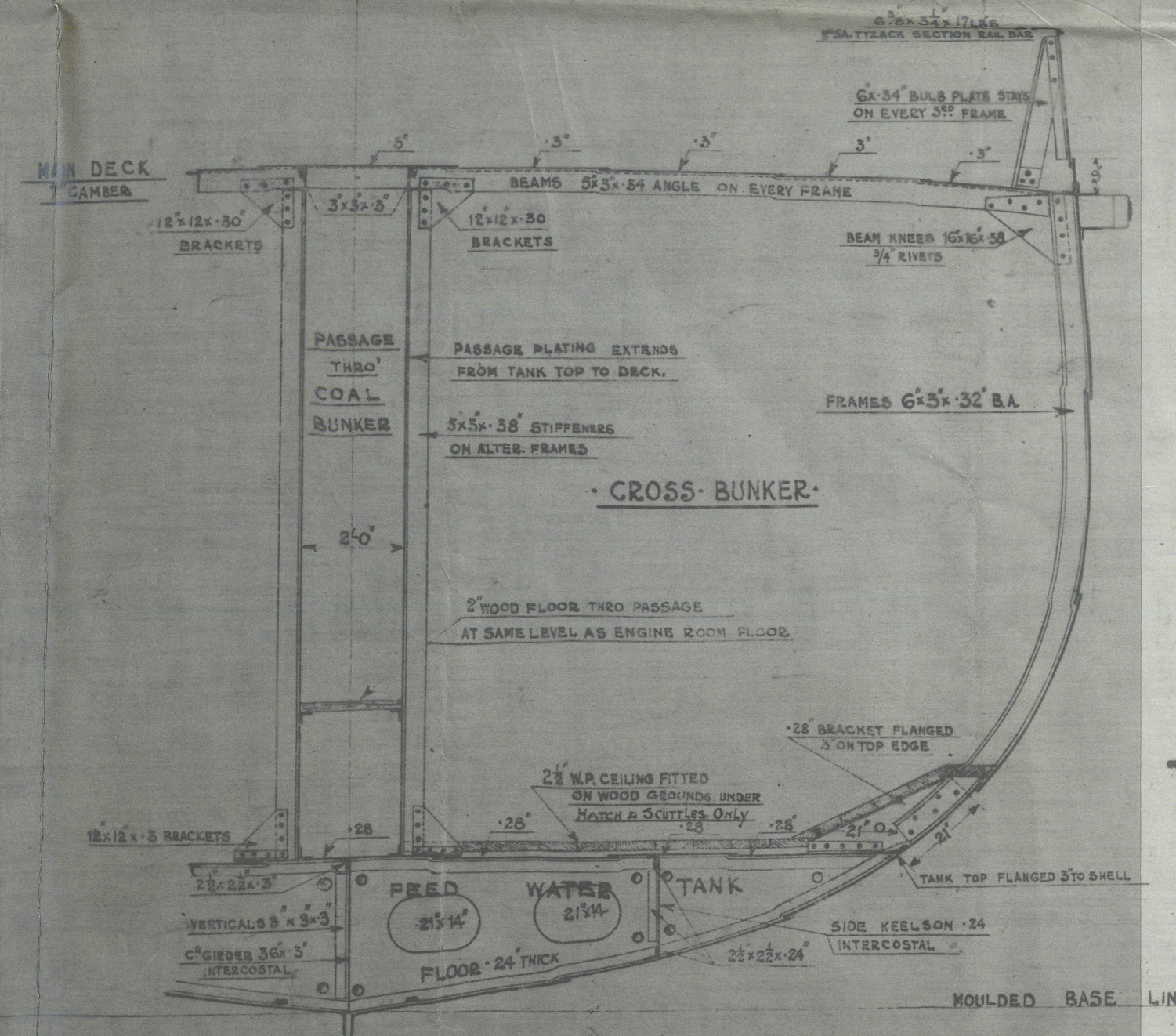
EQUIPMENT

2	BOARD ANCHORS	STOCKLESS	EACH	102 CWTs.
1	KEDGE ANCHOR	EX	STOCK	1 1/2 CWTs.
2	SALVAGE ANCHORS	TO OWNERS REQUIREMENTS		50 CWTs. EACH
120	FATHOMS	18	STUD LINK	CHAIN CABLE
60	"	18	"	"
115	"	12	MANILLA CORDAGE	CABLE LAID TOWING HANSE
75	"	7 1/2	HEMP TOWING	HANSE.
120	"	9	MANILLA	HANSE
2-60	"	6	"	"
90	"	5 1/2	"	"
2-60	"	4 1/2	"	"
100	"	3	"	"
60	"	3 1/2	FLXIBLE GALVANIZED	STEEL WIRE ROPE,
FITTED ON WIRE REEL, WITH BRAKE.				

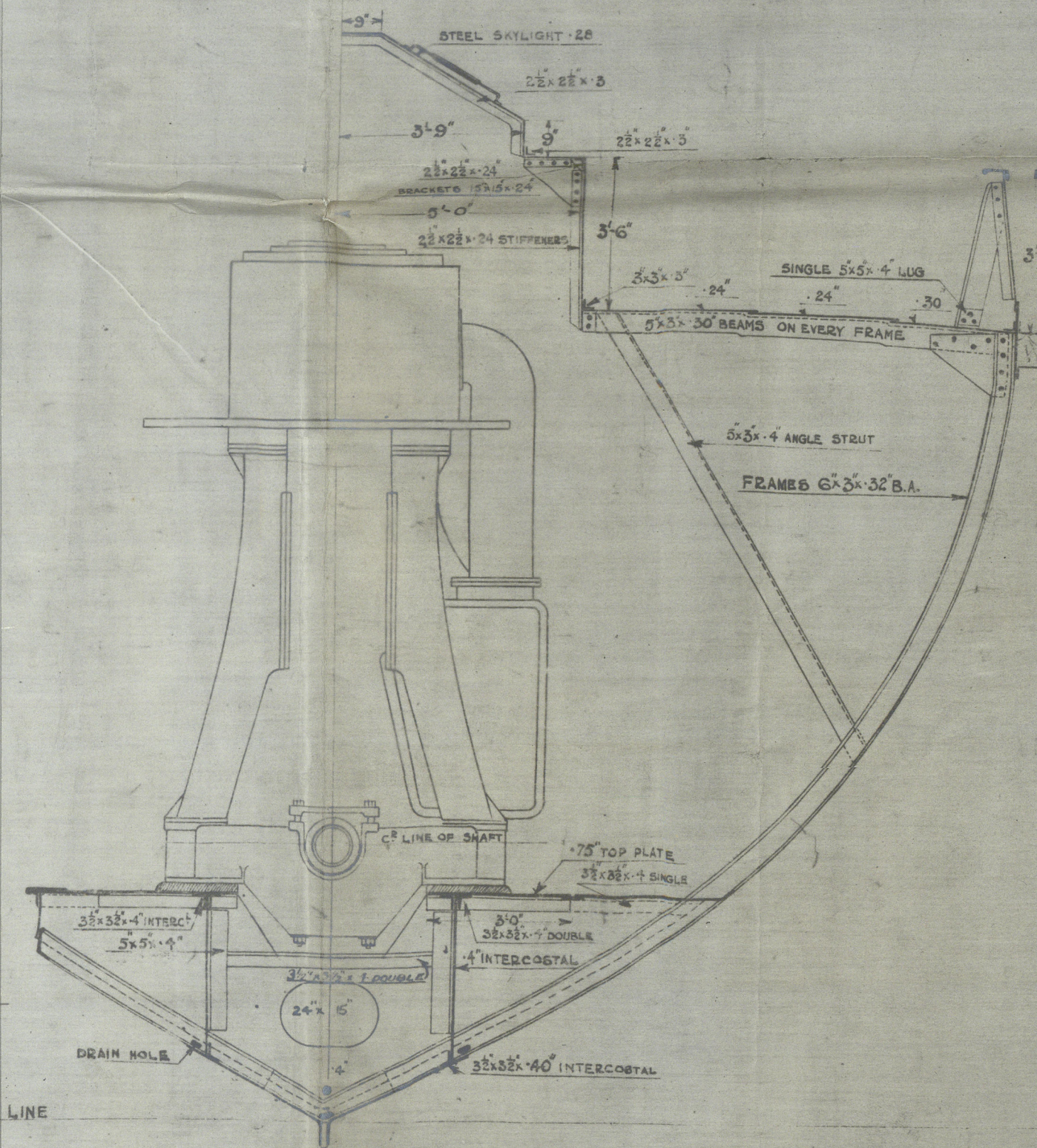
SUPPLIED BY ADMIRALTY



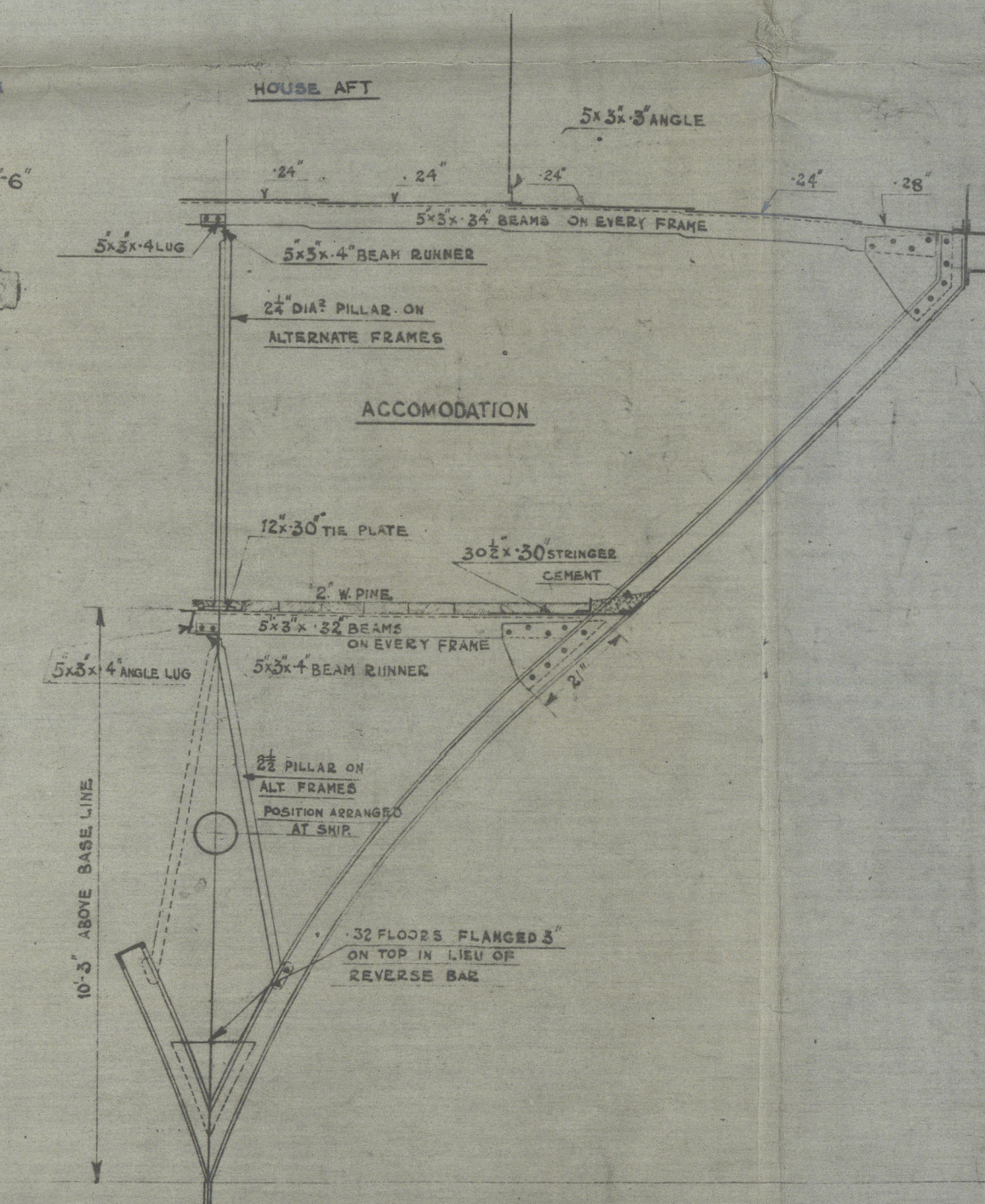
SECTION THRO BOILER ROOM AT FRAME 37



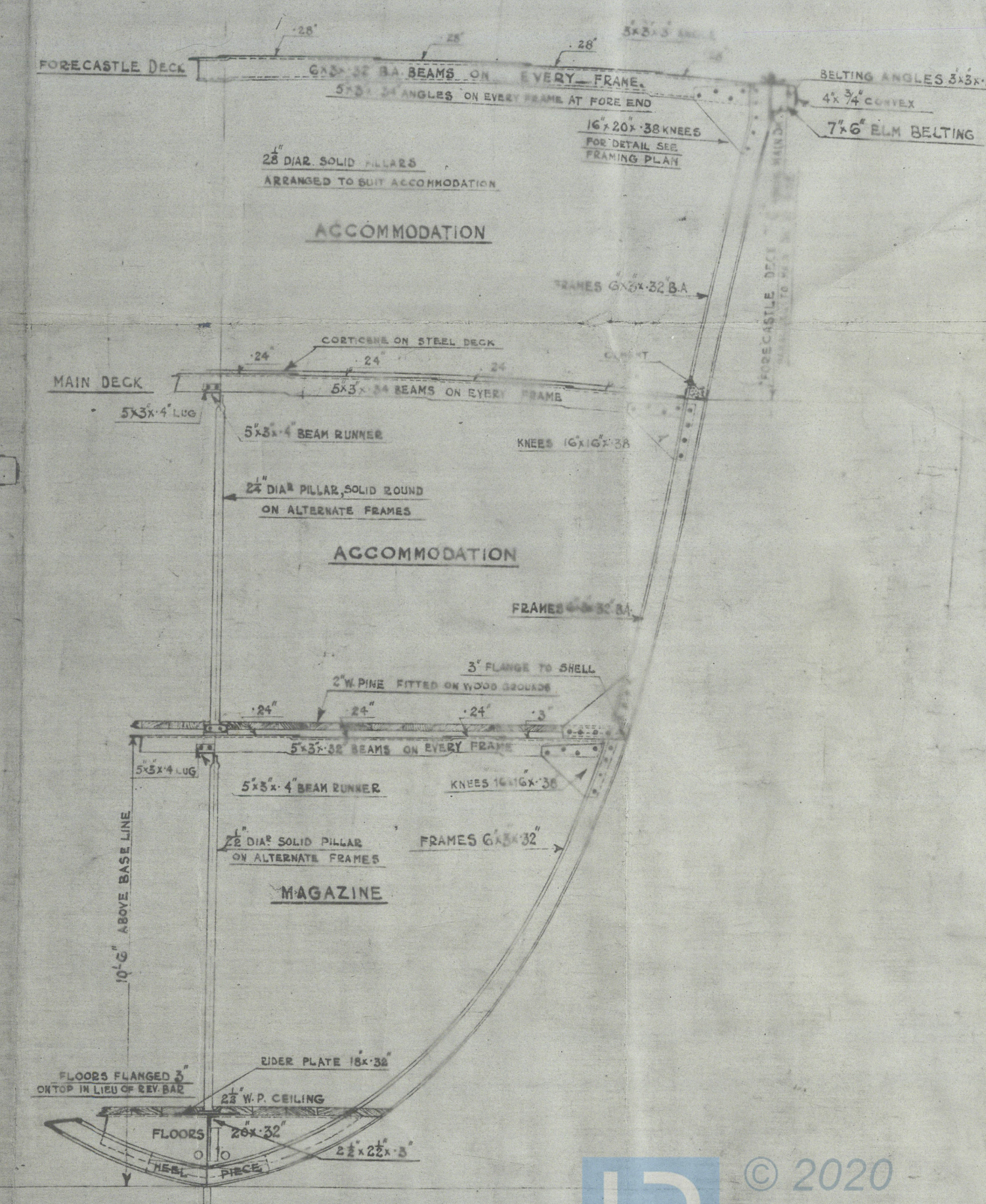
SECTION THRO CROSS BUNKER AT FRAME 31



SECTION THRO' ENGINE ROOM AT FRAME 20



SECTION THRO' FLAT AT FRAME 10



SECTION THRO' FORECASTLE AT FRAME 60.

ss. Uco

Midship Section (as built)

LB 94 Top

11. Hts

" ST. KITTS "

See ^{Spd} London Report No. 27233 (HULL)

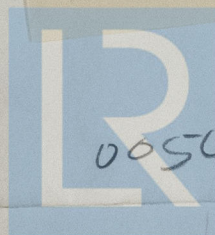
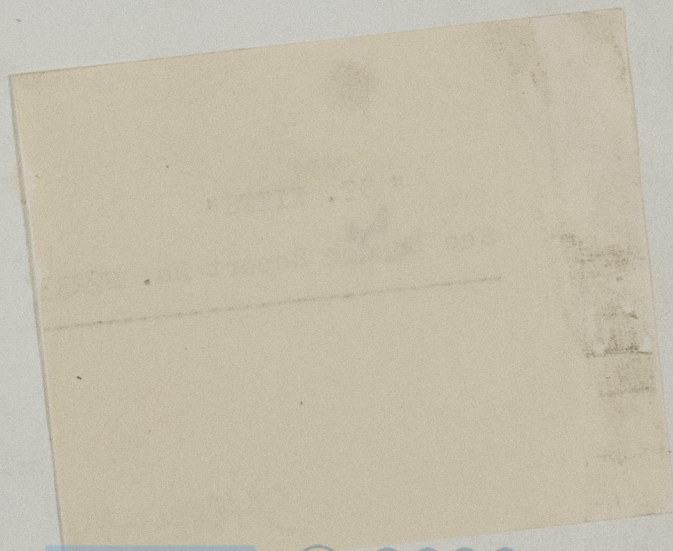
005443-00452-0031^{1/2}

ss. Vco

Midship Section (as built)

LB 94 Top

St. Lifts



© 2020

005443-00452-0031²/₂
Lloyd's Register
Foundation