

Lloyd's Register of Shipping.

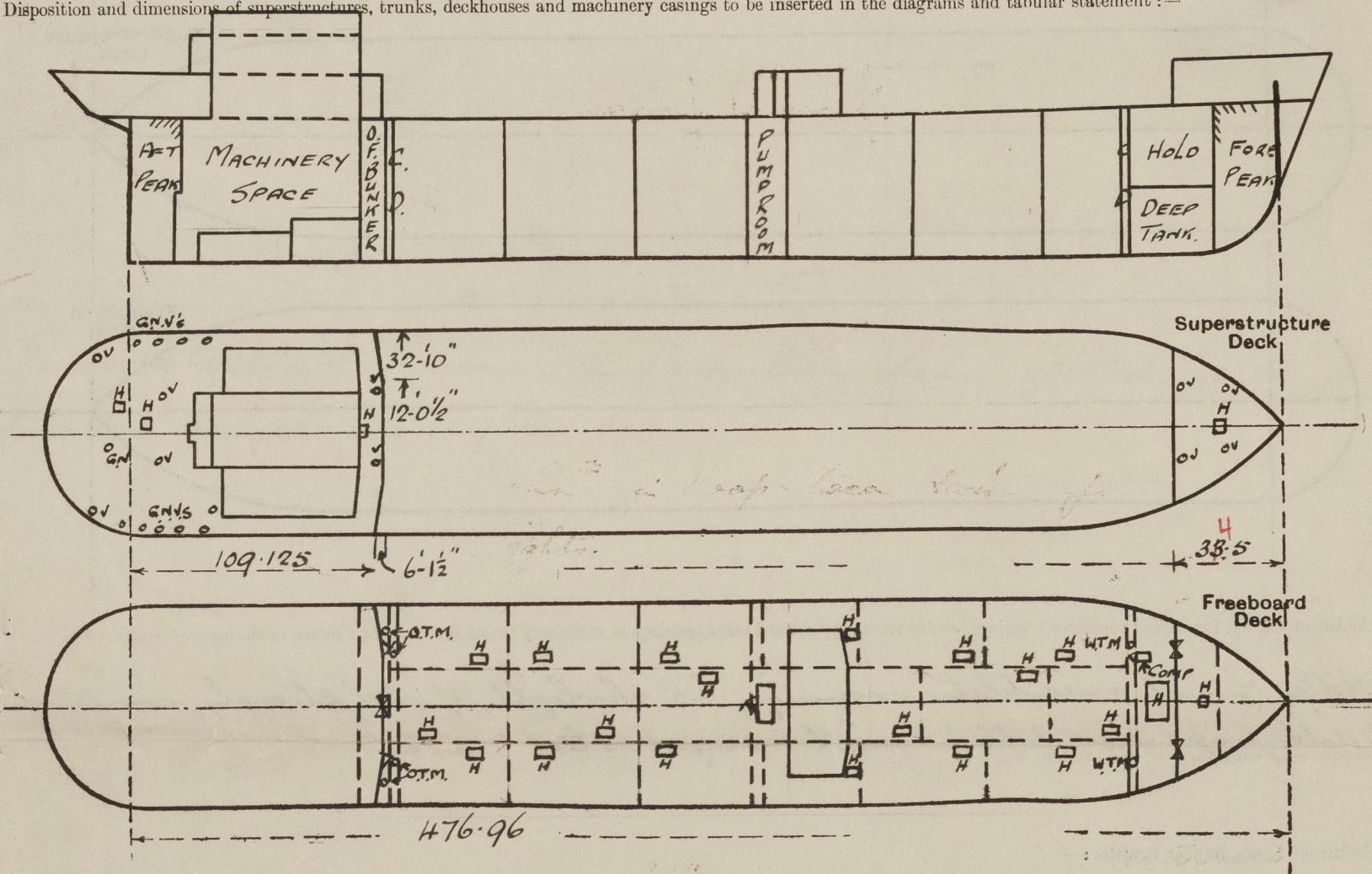
SURVEYS FOR FREEBOARD.

(CONDITIONS OF ASSIGNMENT.)

 Index No.
 (For London Office only).
N^o 33284

Ship's Name SS. EMPIRE AIRMAN Port of Survey Sunderland
 Official Number _____ Surveyor's Signature W. C. Miller
 Nationality and Port of Registry BRITISH, SUNDERLAND. Date of Survey During Construction

Disposition and dimensions of superstructures, trunks, deckhouses and machinery casings to be inserted in the diagrams and tabular statement:—



Particulars of Superstructures, Trunks, Casings, Deckhouses.

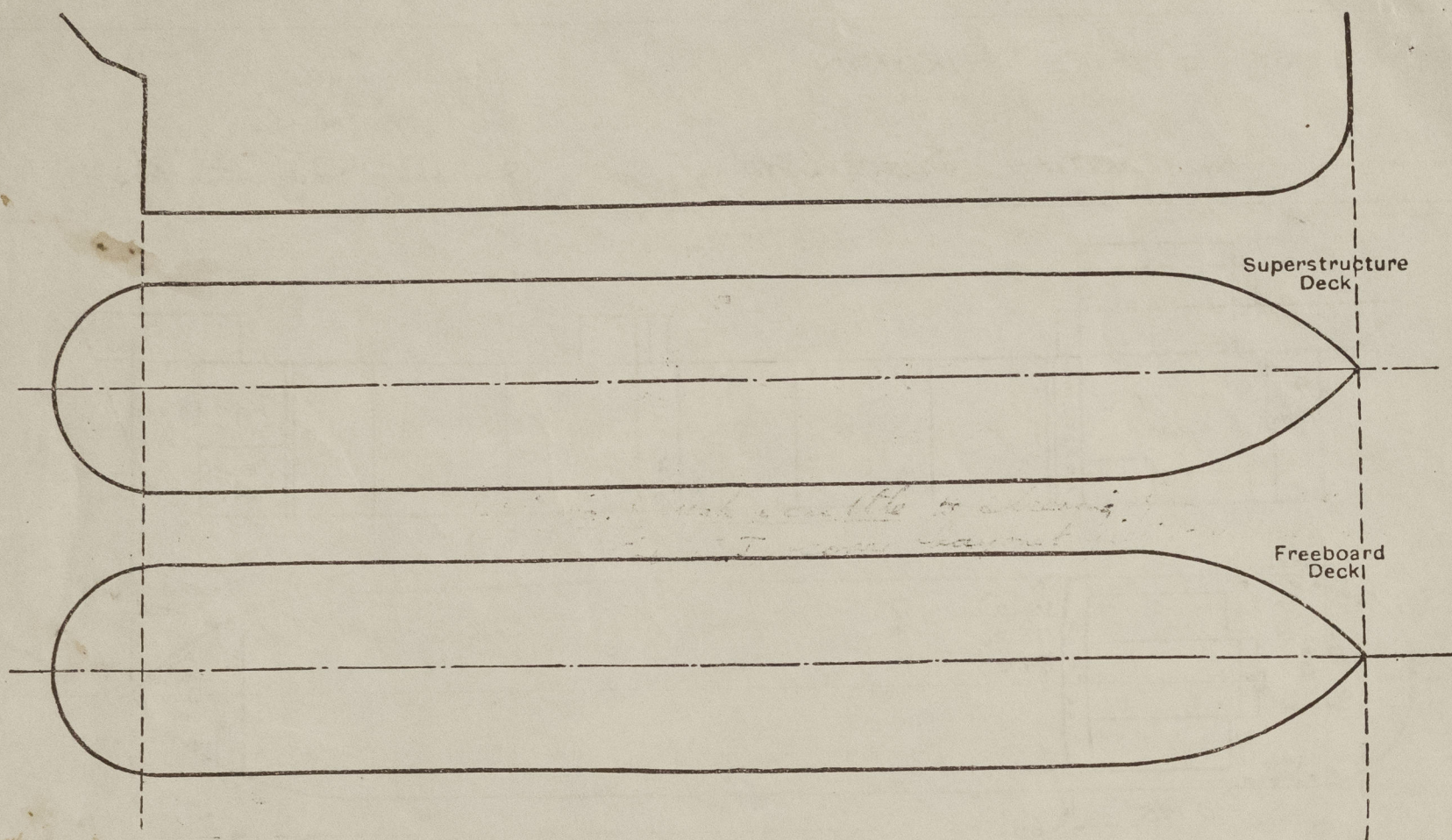
| | Coaming | Plating | Stiffeners | Spacing | End Attachments of Stiffeners | Size of Openings | Height of Sills | Height of Casings |
|---|---------|---------|-------------------|---------|-------------------------------|--|-----------------|-------------------|
| Poop Bulkhead ... | 44 | 44 | 10 x 3 1/2 x 50 L | 30 | Lugged top welded to deck | 2 @ 4'6" x 2'3" (a) 1 @ 5'0" x 4'1" (b) | 18" | 7'-6" |
| Raised Quarter Deck Bulkhead ... | ✓ | ✓ | | | | | | |
| Bridge, After Bulkhead ... | ✓ | ✓ | | | | | | |
| Bridge, Forward Bulkhead ... | ✓ | ✓ | | | | | | |
| Forecastle Bulkhead ... | 30 | 30 | 5 x 3 x 16 OA | 30" | Limited to boundaries | 4'1" x 3'1" | 18" | 7'-6" |
| Trunk, Aft ... | ✓ | | | | | | | |
| Trunk, Forward ... | ✓ | | | | | | | |
| Exposed Machinery Casings on Freeboard or Raised Quarter Decks ... | ✓ | | | | | | | |
| Exposed Machinery Casings on Superstructure Decks ... | 34" | 32 | 5 x 3 x 18 L | 30" | continuous | NONE. | ✓ | - |
| Machinery Casings within Superstructures not fitted with Class I Closing Appliances ... | ✓ | ✓ | | | | | | |
| Deckhouses on Flush Deck Ships ... | ✓ | | ✓ | | | | | |

Particulars of Closing Appliances (state if capable of being manipulated from both sides).

| | |
|---|--|
| Poop Bulkhead ... | (a) Chequer Type W.T. door (b) 3 1/2" wood covers in full height sweetened channels. |
| Raised Quarter Deck Bulkhead ... | ✓ |
| Bridge, After Bulkhead ... | ✓ |
| Bridge, Forward Bulkhead ... | ✓ |
| Forecastle Bulkhead ... | 3" wood covers in full height sweetened channels. |
| Exposed Machinery Casings on Freeboard or Raised Quarter Decks ... | ✓ |
| Exposed Machinery Casings on Superstructure Decks ... | ✓ |
| Machinery Casings within Superstructures not fitted with Class I Closing Appliances ... | ✓ |
| Deckhouses on Flush Deck Ships ... | ✓ |

PARTICULARS OF PROTECTION TO OPENINGS, ETC.

The following diagrams should be used to indicate the positions of cargo and coaling hatchways, gangway, cargo and coaling ports, ventilators, companionways, etc., which would affect the seaworthiness of the ship:—



Particulars of fiddle, funnel and ventilator coamings, engine room skylight and other openings in machinery casing tops and their means of closing:—

Fiddle, funnel, & ventilator coamings, E.R. skylight, of steel strongly constructed. Fiddle opening fitted with hinged steel cover.

Particulars of Flush Bunker Scuttles:—

NONE.

Particulars of Companionways:—

To Forward Pump Room. Plating 40, deck opening 3'2" x 2'9", door 4'0" x 2'3", coaming 19 1/2" mechan type W.T. door.
Pump Room Entrance plating 35 L. 25, stiffeners 4 x 3 x 36 @ 30", beams 5 x 3 x 30 L @ 30", 1 door 4'0" x 2'3", 18" coaming with mechan type W.T. door, 2 skylights 5'6" x 4'0"

Particulars of Ventilators in exposed positions on freeboard and superstructure decks:—

Fore Deck 2'9" Vents to Fore Green Deck Coaming 36" x 32"
2'15" " " " " " 36" x 36"
Poop Deck 6'6" " " " " " 30" x 30"
11'5" G.N. " " " " " 18" to lip.
Upper Deck 1'9" " " " " " 36" x 32"

ventilators fitted with wood plug & canvas cover.

Particulars of Air Pipes in exposed positions on freeboard, raised quarter, or superstructure decks:—

Air pipes on Poop Deck to O.B. tanks 18" to lip.
Air pipes on Upper Deck 36" to lip.

Air pipes fitted with wood plug or gauge & canvas cover.

Particulars of Gangway Cargo and Coaling Ports:—

NONE.

Particulars of Scuppers and Sanitary Discharge Pipes:—

4-6 x 5 1/2" slots cut in stinger angle, each side, to drain upper deck.

Discharges from spaces on or above freeboard deck, led to N.R. valves on shell, below freeboard deck.

Particulars of Side Scuttles:—

10" dia. sidelights to Accom in poop & fore decks, fitted with substantial hinged deadlights.

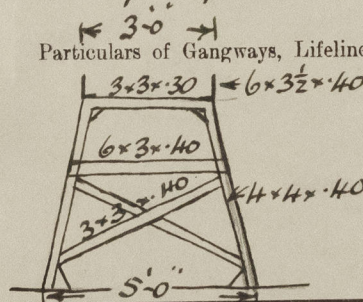
Vertical distance of Sill of lowest Side Scuttle above top of keel

42'6"

Particulars of Guard Rails:—

Steel bulwark 3'6" in way of midship deckhouse, and at ends of poop & fore decks. On poop & fore decks, & on remainder of upper deck, rails 3'6" high, stanchions 2 1/2 x 1 1/2" flat welded to deck spaced 5'0" apart, 3 rails on poop & upper deck, 2 rails on fore deck.

Particulars of Gangways, Lifelines, etc.:—



Gangway 7'6" to 7'0" high from poop to bridge, & from bridge to foremast, with 1/4" chequered plating. Supports 9'6" to 9'10 1/2" apart, fore & aft bracing, 3 off aft & 2 off forward. Lifelines from ladders on forward gangway to fore deck.

Particulars of Freeing Arrangements.

| | Length of Bulwark | Height of Bulwark | Size of Freeing Ports | Number each side | Area each side | Rule area each side |
|------------------|-------------------|-------------------|-----------------------|------------------|----------------|---------------------|
| After Well ... | ✓ | | | | | |
| Forward Well ... | ✓ | | | | | |

State position of each freeing port ... (After Well:— ✓)
(F. and A. position and height above deck edge) (Forward Well:— ✓)

State whether the freeing ports are fitted with shutters, bars, or rails, and give particulars of such:— ✓

Additional area where sheer is less than standard. ✓

PARTICULARS OF PROTECTION TO OPENINGS, ETC.

| HATCHWAYS ON FREEBOARD AND SUPERSTRUCTURE DECKS. | | | | | | | | | |
|--|---|------------------------------|--|--|--|--|--|--|--|
| Description of Hatchway | | | FREEBOARD DECK | | | | | | |
| Dimensions of Hatchway | | | 18 Hatches to Cargo Tanks 5'-3" x 4'-0" Coaming 8" x 50, 50" O.T. covers with 14 toggles spaced 15" apart. | | | | | | |
| COAMINGS | { | Height above Deck | Hatch to Fore Hold 8'-0" x 12'-0" Coaming 30" x 44, 7" L stiffeners side | | | | | | |
| | | Thickness { Sides | and ends, 4 plate stays, 36" H.T. coar with 3-6" L stiffeners, 20 | | | | | | |
| | | Stiffeners | toggles. Access manhole in cover 30" x 24, 4" coaming, 42" W.T. | | | | | | |
| | | Brackets, Stays | covers with 6 toggles. | | | | | | |
| HATCH BEAMS | { | Number | 6 Access manholes to Cofferdams & O.F. Bunker 23" x 18" | | | | | | |
| | | Spacing | 8" x 40" coaming, 50 covers, 5 toggles. | | | | | | |
| | | Scantling and Sketch | Hatch to Chain Locker 2'-0" x 1'-9", Coaming 9" x 40, Rest, cover, cleats, 1 tarpaulin. | | | | | | |
| | | Bearing Surface | FCL DECK. | | | | | | |
| FORE AND AFTERS | { | Number | Hatch to Life Line Decks 2'-6" x 2'-6", Coaming 4" x 38, 40 W.T. | | | | | | |
| | | Spacing | covers with 8 toggles. | | | | | | |
| | | Unsupported Lengths | POOP DECK. | | | | | | |
| | | Scantling* and Sketch | Hatch to Deck Store 2'-6" x 2'-6" x 8" x 40" Coaming, Rest, cover, cleats, 2 tarpaulins. | | | | | | |
| HATCH COVERS | { | Material | 2 Hatches to Magazine & Store 2'-6" x 2'-6", Coaming 9" x 40, 40" W.T. | | | | | | |
| | | Thickness | covers, 8 toggles. | | | | | | |
| | | How fitted | 1-18" dia. flush scuttle to Steering Gear Space with | | | | | | |
| | | Bearing Surface | substantial C.I. cover, bayonet joints, & chain attachment. | | | | | | |
| Spacing of Cleats | | | | | | | | | |
| Number of Tarpaulins | | | | | | | | | |
| <p>*Are wood fore and afters steel shod at all bearing surfaces?</p> <p>Are battens and wedges efficient and in good condition?</p> <p>Are tarpaulins in good condition and in accordance with rule requirements?</p> <p>Are lashings provided in accordance with rule requirements?</p> | | | | | | | | | |

Particulars of any special features :—

Endorsement at first survey and at surveys for renewal of Certificate :—

The fittings and appliances are in accordance with the particulars shown on this form (or as now modified) and are in good condition.



© 2020

Lloyd's Register
Foundation