

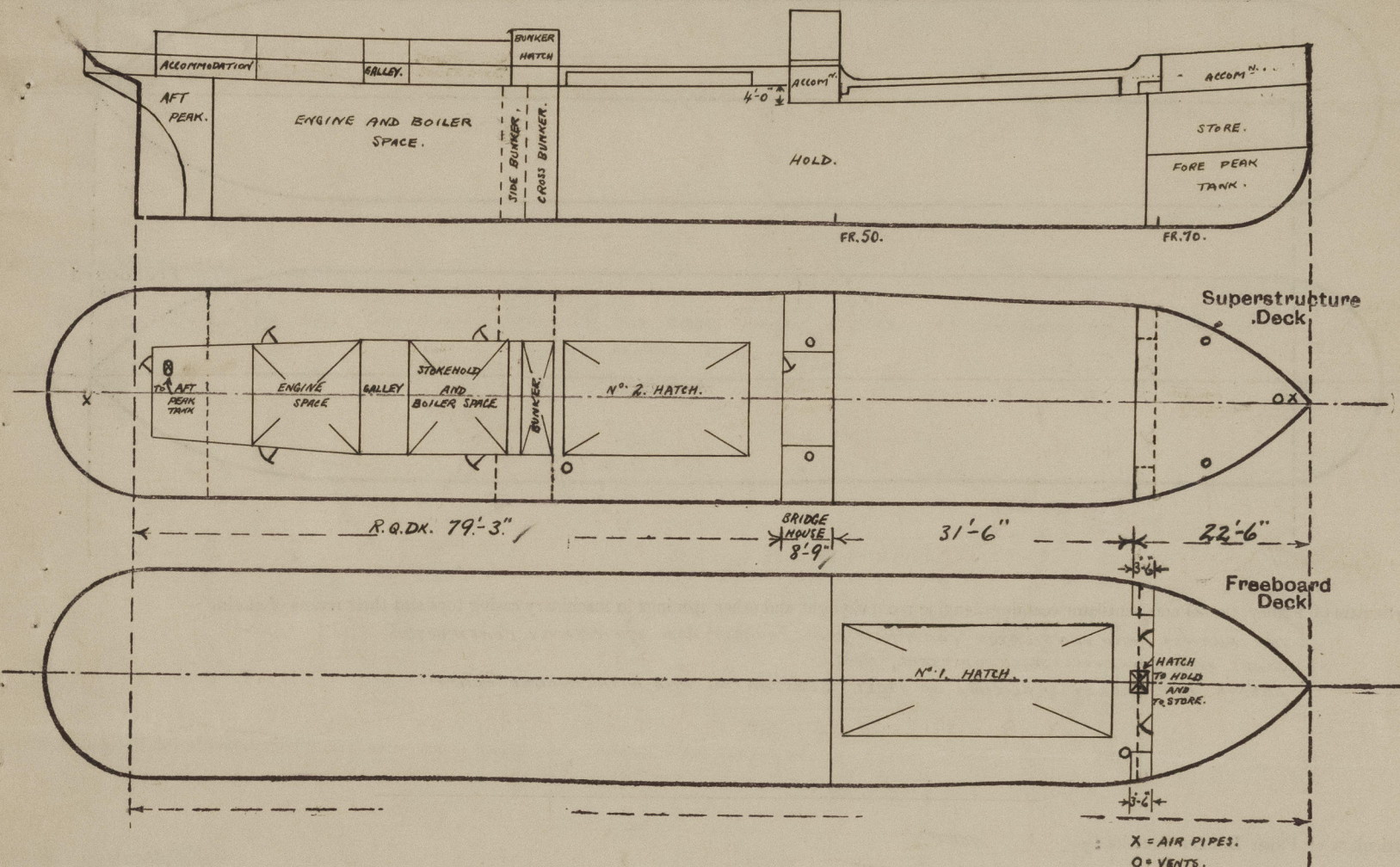
# Lloyd's Register of Shipping.

## SURVEYS FOR FREEBOARD.

### (CONDITIONS OF ASSIGNMENT.)

Index No. 28589  
(For London Office only).21773Ship's Name S.S. "JOHN EVELYN."Port of Survey LEITH.Official Number 143498Surveyor's Signature William Alcorn.Nationality and Port of Registry BRITISH, LEITH.Date of Survey 18<sup>TH</sup> DECEMBER, 1946, AND SUBSEQUENT DATES.

Disposition and dimensions of superstructures, trunks, deckhouses and machinery casings to be inserted in the diagrams and tabular statement: -



Particulars of Superstructures, Trunks, Casings, Deckhouses.

	Coaming	Plating	Stiffeners	Spacing	End Attachments of Stiffeners	Size of Openings	Height of Sills	Height of Casings
Peep Bulkhead, DECKHOUSE, AFT END.	.30	.26	2 1/2 x 2 1/2 x 26 O.A.	30"	✓	4'-1" x 22"	18"	6'-6"
<del>BRIDGE FORWARD BHD</del> Raised Quarter Deck Bulkhead FR. 50.	.28	.24	5 x 2 1/2 x 40 B.A.	30"	BRACKETED TOP AND BOTTOM.	✓	✓	7'-0"
HOUSE Bridge After Bulkhead ...	.28	.24	2 1/2 x 2 1/2 x 26 O.A.	30"	✓	5'-4 1/2 x 19 1/2	11"	7'-0"
<del>R.Q.DX.</del> Bridge, Forward Bulkhead ...	.30"	.30"	.30" plate webs			none	✓	4'-0"
Forecastle Bulkhead ... FR. 70...	.25	.25	2 1/2 x 2 1/2 x 26 O.A.	23" to 30"	✓	4'-5" x 23 1/2"	18"	7'-0"
Trunk, Aft ...			✓					
Trunk, Forward ...			✓					
Exposed Machinery Casings on Freeboard or Raised Quarter Decks ...	.30	.26	2 1/2 x 2 1/2 x 26 O.A.	22" to 30"	✓	4'-0" x 22"	16" & 17"	6'-6"
Exposed Machinery Casings on Superstructure Decks ...			✓					
Machinery Casings within Superstructures not fitted with Class I Closing Appliances ...			✓					
Deckhouses on Flush Deck Ships ...			✓					

Particulars of Closing Appliances (state if capable of being manipulated from both sides).

Peep Bulkhead, DECKHOUSE AFT END.	ONE HARDWOOD HINGED DOOR, 4'-1" x 22", CAN BE OPERATED FROM BOTH SIDES.
<del>BRIDGE FORWARD BHD</del> Raised Quarter Deck Bulkhead FR. 50.	NO OPENINGS.
HOUSE Bridge After Bulkhead ...	ONE HARDWOOD HINGED DOOR, 5'-4 1/2" x 19 1/2", CAN BE OPERATED FROM BOTH SIDES.
<del>R.Q.DX.</del> Bridge, Forward Bulkhead ...	No openings ✓
Forecastle Bulkhead ... FR. 70...	TWO HINGED STEEL DOORS, 4'-5" x 23 1/2", CAN BE OPERATED FROM BOTH SIDES.
Exposed Machinery Casings on Freeboard or Raised Quarter Decks ..	FOUR HINGED STEEL DOORS, 4'-0" x 22", CAN BE OPERATED FROM BOTH SIDES.
Exposed Machinery Casings on Superstructure Decks ...	✓
Machinery Casings within Superstructures not fitted with Class I Closing Appliances ...	✓
Deckhouses on Flush Deck Ships ...	✓



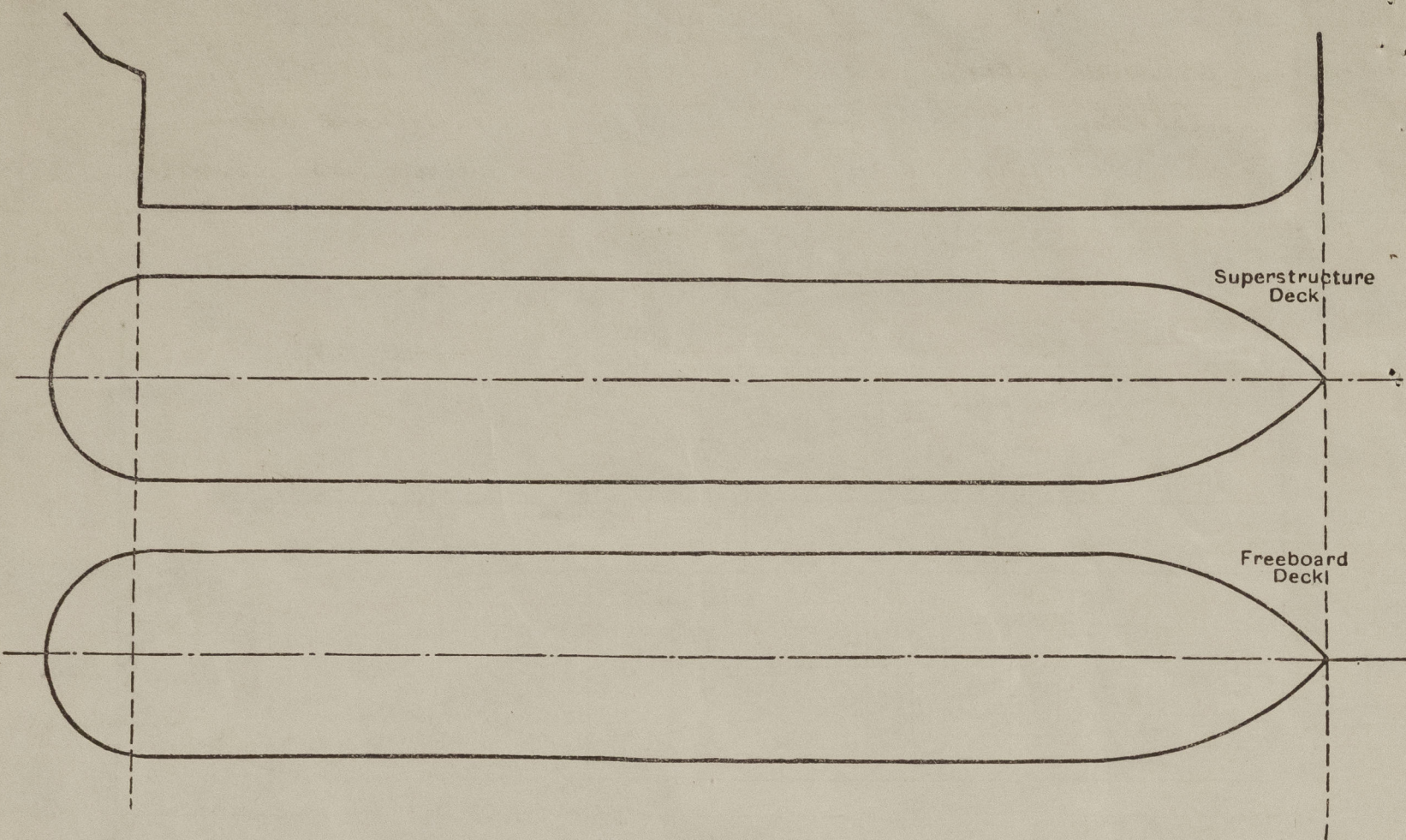
© 2020

Lloyd's Register  
Foundation



## PARTICULARS OF PROTECTION TO OPENINGS, ETC.

The following diagrams should be used to indicate the positions of cargo and coaling hatchways, gangway, cargo and coaling ports, ventilators, companionways, etc., which would affect the seaworthiness of the ship:—



Particulars of fiddley, funnel and ventilator coamings, engine room skylight and other openings in machinery casing tops and their means of closing :—

THE FUNNEL AND VENTILATOR COAMINGS ARE STRONGLY AND EFFICIENTLY CONSTRUCTED.  
FLAPS OVER STOWAGE SPACE OF STEEL, HINGED.  
ENGINE AND GALLEY SKYLIGHTS OF STEEL SUBSTANTIAL AND WITH HINGED FLAPS.

Particulars of Flush Bunker Scuttles :—

NONE.

Particulars of Companionways :—

ENTRANCE TO BRIDGE HOUSE. WOOD DOOR AT AFT END, HINGED, 5'-4 1/2" x 19 1/2" - SILL 11", CAN BE OPERATED BOTH SIDES.

Particulars of Ventilators in exposed positions on freeboard and superstructure decks :—

ON FCSLE DK. 1 OFF  $7\frac{1}{2}$ " DIA. SCREW DOWN COVER, COATING 18" x 30"

2 " 5" " STOVE PIPES, COARINGS 18" x 30".

ON UPPER DK. 1 OFF 9" DIA., COWL VENT, TO HOLD (S.S.F.) COAMING 36" X 32".

ON R.Q.DK. 1 OFF 9" DIA., COWL VENT TO HOLD (S.S.A.) COAMING 36"x.32"

ON BRIDGE HOUSE. 1 OFF, P & S.S., 6" DIA., SCREW DOWN COVER, COAMING 12" x .28.

Particulars of Air Pipes in exposed positions on freeboard, raised quarter, or superstructure decks :—

TO FORE PEAK TANK. 1 AT 3" DIA., OPENING 18" ABOVE FOSLE DECK.

TO AFT PEAK TANK. 1 AT 3" DIA., OPENING 36" ABOVE R. Q. DECK.

Particulars of Gangway Cargo and Coaling Ports:—

NONE

John Evelyn

Particulars of Scuppers and Sanitary Discharge Pipes :—

ONE 4" DISCHARGE PIPE FROM CREW W.C. ON UPPER DECK, P.J., FORWARD, STORM VALVE AT SHELL, BELOW FREEBOARD DECK.

ONE 4" " " " CAPTAIN'S W.C. " " " " AMIDSHIPS, " " " " " "

ONE 4" " " " CREWS W.C. ON R.Q.DK., P.S., AFT, STORM VALVE AT SHELL, BELOW FREEBOARD DECK.

ONE 2" SCUPPER PIPE FROM GALLEY ON R.Q.DK., S.S. AFT, STORM VALVE AT SHELL, BELOW FREEBOARD DECK.

Particulars of Side Scuttles:—

3 OFF, (P+S.S.) IN FOSLE ACCOMMODATION, 6  $\frac{5}{8}$ " DIA., BRASS FRAME, SUBSTANTIAL CONSTRUCTION, HINGED METAL DEADLIGHTS.

Vertical distance of Sill of lowest Side Scuttle above top of keel ALL SHELL SIDE SCUTTLES IN FISCLE SPACE ABOVE FREEBOARD DECK.

Particulars of Guard Rails :—

ON FORECASTLE. OPEN RAILS, 36" HIGH, STANCHIONS ABOUT 48" APART. - 2 RODS.

ON UPPER DECK. PLATE BULWARK; PLATING .26, RAIL BAR 7"x3"x.40 B.A. STAYS 7 1/2"x.40 BULB PLATE, AT APPROX. 6'-0".

ON R.Q.DK.      "      "      "      26      "      "      "      "      "      STAYS 8" X .40      "      "      "      "

Particulars of Gangways, Lifelines, etc.:— PLATFORMS FROM R.Q.DK. BULKHEAD AND FUSELAGE FRONT TO HATCHWAY No. 1

MANILLA LIFELINES FEEDLE TO AMIDSHIPS AND DECKHOUSE AFT TO AMIDSHIPS,  
WITH FITTINGS AT CASINGS.

Particulars of Freeing Arrangements.						
	Length of Bulwark	Height of Bulwark	Size of Freeing Ports	Number each side	Area each side	Rule area each side
After Well ... R. & DK. ...	79' 3" <del>93-0</del>	3'-3"	□ 2'-6" x 1'-6" ⊖ 6" x 4" SCUPPERS.	4 4	15 SQ. FT. .66 SQ. FT.	15.85 <del>9</del>
Forward Well ... ..	31' 5" <del>32-00</del>	4'-3"	□ 2'-6" x 1'-6" ⊖ 6" x 4" SCUPPERS.	3. 3.	11.25 SQ. FT. .50 SQ. FT.	6 <del>6</del>

State position of each freeing port ... <sup>R. Q. DK.</sup> After Well:— IN VICINITY OF FRAMES, 7, 18, 29 AND 39; 9" FROM DECK.

(F. and A. position and height above deck edge) { Forward Well :— " " " 52, 57 AND 64; 12" FROM DECK.

State whether the freeing ports are fitted with shutters, bars, or rails, and give particulars of such:— *HINGED SHUTTERS AND PROTECTION RAILS FITTED.*

Additional area where sheer is less than standard.



# PARTICULARS OF PROTECTION TO OPENINGS, ETC.

HATCHWAYS ON FREEBOARD AND SUPERSTRUCTURE DECKS.									
Description of Hatchway		No. 1.	No. 2.	COAL HATCH, CASING TOP.	MANHOLE TO AFT PEAK TANK.				
Dimensions of Hatchway		UPPER DECK.	R.O. DECK.						
		23'6" x 14'0"	21'0" x 14'0"	5'2 1/2" x 14'0"	21" x 18"				
COAMINGS	Height above Deck	3'6"	3'0"	7'6"					
	Thickness	4 1/4	4 1/4	26					
	Sides	4 1/4	4 1/4	26					
	Ends	4 1/4	4 1/4	26					
	Stiffeners	7x3x38 B.A.	7x3x38 B.A.	✓					
	Brackets, Stays	EACH SIDE, 26 6x38 BULB PLATE.	26 6x38 BULB PLATE.	✓					
HATCH BEAMS	Number	4	4						
	Spacing	4'8 1/2"	4'2 1/2"						
	Scantling and Sketch	PL. 15" x 32"	PL. 15" x 32"						
		TOP AND BOTTOM ANGLES, 3x3x42. DOUBLE.	TOP AND BOTTOM ANGLES, 3x3x42. DOUBLE.						
	Bearing Surface	3"	3"						
FORE AND AFTERS	Number								
	Spacing								
	Unsupported Lengths								
	Scantling and Sketch								
	Bearing Surface								
HATCH COVERS	Material	WOOD.	WOOD.	WOOD.					
	Thickness	2 1/2"	2 1/2"	2 1/2"					
	How fitted	F.A.	F.A.	F.A.					
	Bearing Surface	3"	3"	3"					
Spacing of Cleats		24"	24"	24"					
Number of Tarpaulins		2	2	2					
<p>*Are wood fore and afters steel shod at all bearing surfaces? NONE.</p> <p>Are battens and wedges efficient and in good condition? YES.</p> <p>Are tarpaulins in good condition and in accordance with rule requirements? YES.</p> <p>Are lashings provided in accordance with rule requirements? YES.</p>									

Particulars of any special features:—

Endorsement at first survey and at surveys for renewal of Certificate:—

The fittings and appliances are in accordance with the particulars shown on this form (or as now modified) and are in good condition.



© 2020

Lloyd's Register Foundation



Name of Ship *JOHN EVELYN*

Freeboard Report Examined  
(Date) *15 May 1957*

Signed *[Signature]*

0077 3/3