

20 MAY 1948

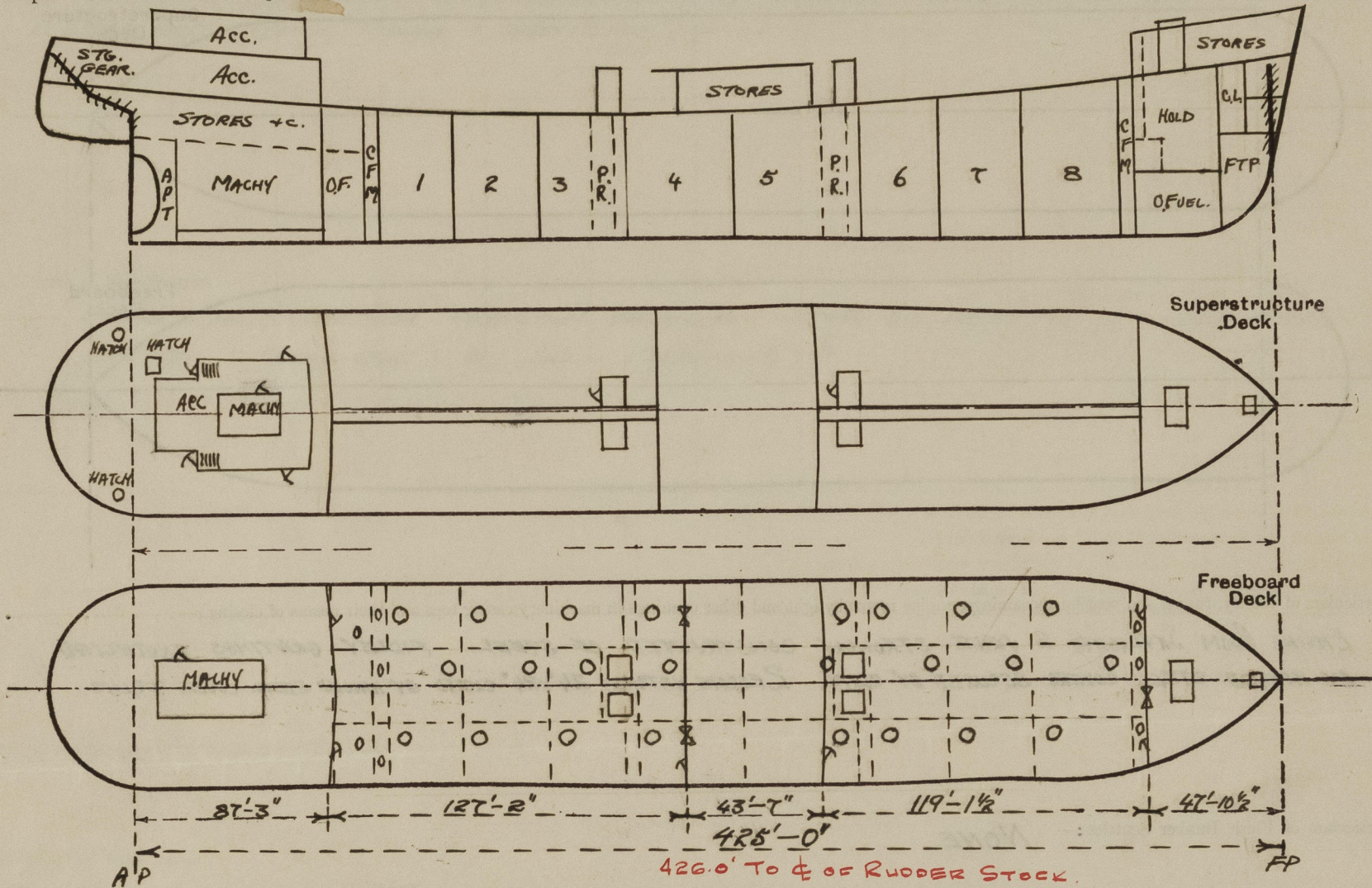
# Lloyd's Register of Shipping.

## SURVEYS FOR FREEBOARD.

(CONDITIONS OF ASSIGNMENT.)

Ship's Name "LABIOSA" Port of Survey NEWCASTLE-ON-TYNE  
Official Number 181908 Surveyor's Signature A. Hunter  
Nationality and Port of Registry BRITISH. LONDON Date of Survey DURING CONSTRUCTION.

Disposition and dimensions of superstructures, trunks, deckhouses and machinery casings to be inserted in the diagrams and tabular statement:—



Particulars of Superstructures, Trunks, Casings, Deckhouses.

|   | Coaming | Plating | Stiffeners  | Spacing | End Attachments of Stiffeners                                       | Size of Openings  | Height of Sills | Height of Casings |
|---|---------|---------|---|---------|---|---|-----------------|-------------------|
| Poop Bulkhead ...   | NONE    | .44     | 9x3 1/2 x 44 B.A.                                 | 30/33   | TOP:— LUGS<br>BTM:— WELDED TO DK.                                   | 2 @ 5'-0" x 2'-6"   | 19"             | 8'-0"             |
| Raised Quarter Deck Bulkhead ...  | —       | —       | —   | —       | —   | —   | —               | —                 |
| Bridge, After Bulkhead ...  | NONE    | .30     | 4x3 x 32 O.A.                                     | 30/33   | TOP: RIVETED TO 2 @ 5'-1" x 3'-1"<br>BTM: ANGLES. 1 @ 5'-0" x 2'-0" | 1 @ 5'-0" x 2'-0"   | 19"             | 7'-6"             |
| Bridge, Forward Bulkhead ...  | »       | .44     | 9x3 1/2 x 44 B.A.                                 | 30/34   | TOP:— LUGS<br>BTM:— WELDED TO DK.                                   | 1 @ 5'-0" x 2'-6"   | 19"             | 7'-6"             |
| Forecastle Bulkhead ...   | »       | .32     | 4x3 x 32 O.A.                                     | 28/31   | TOP:— FREE<br>BTM:— R4'D TO DK.<br>ANGLES                           | 1 @ 5'-0" x 2'-6"<br>1 @ 5'-0" x 4'-0"<br>1 @ 4'-6" x 2'-0" | 19<br>20<br>18  | 7'-6"             |
| Trunk, Aft ...  | —       | —       | —   | —       | —   | —   | —               | —                 |
| Trunk, Forward ...  | —       | —       | —   | —       | —   | —   | —               | —                 |
| Exposed Machinery Casings on Freeboard or Raised Quarter Decks ...                      | —       | —       | —   | —       | —   | —   | —               | —                 |
| Exposed Machinery Casings on Superstructure Decks ...                                   | .34     | .30     | 3 x 3 x 30 O.A.                                   | 30      | TOP:— BRACKETS<br>BTM:— FREE BELOW SUPERS. DK.                      | 4 @ 5'-0" x 2'-0"   | 18              | 7'-6"             |
| Machinery Casings within Superstructures not fitted with Class I Closing Appliances ... | —       | —       | —   | —       | —   | —   | —               | —                 |
| PUMP ROOM ENTRANCES<br>Deckhouses on Flush Deck Ships ...                               | NONE    | .30     | 40 FORD SIDES 6x3 x 36 B.A.<br>ENDS 4x3 x 32 O.A. | 30      | TOP:— BRACKETS<br>BTM:— WELDED TO DK.                               | 4'-6" x 2'-3"   | 24              | 7'-6"             |

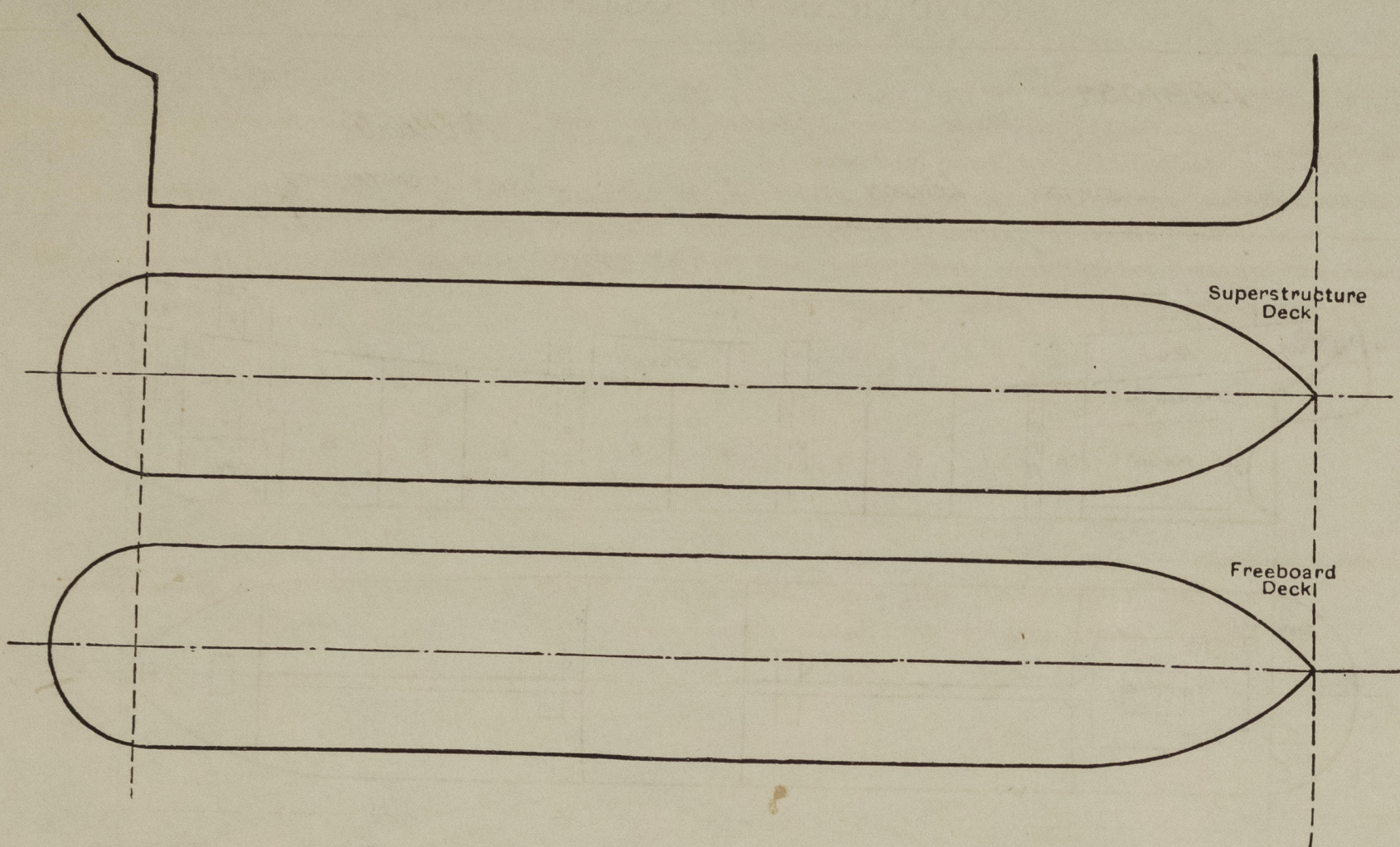
Particulars of Closing Appliances (state if capable of being manipulated from both sides).

|   |   |
|---|---|
| Poop Bulkhead ...   | HINGED STEEL W.T. DOORS CLOSED BY CLIPS MANIPULATED BOTH SIDES.                     |
| Raised Quarter Deck Bulkhead ...  | HINGED STEEL W.T. DOORS CLOSED BY CLIPS MANIPULATED BOTH SIDES.                     |
| Bridge, After Bulkhead ...  | 2 PORTABLE STEEL PLATES SECURED BY HOOK BOLTS SPACED 18 INS.                        |
| Bridge, Forward Bulkhead ...  | HINGED STEEL W.T. DOOR CLOSED BY CLIPS MANIPULATED BOTH SIDES.                      |
| Forecastle Bulkhead ...   | PORTABLE STEEL PLATE SECURED BY HOOK BOLTS SPACED 18 INS.                           |
| Exposed Machinery Casings on Freeboard or Raised Quarter Decks ...                      | HINGED STEEL W.T. DOOR CLOSED BY CLIPS MANIPULATED BOTH SIDES (TO FORECASTLE STORE) |
| Exposed Machinery Casings on Superstructure Decks ...                                   | » " " " " " " " " (TO AUXILIARY PUMP ROOM)  |
| Machinery Casings within Superstructures not fitted with Class I Closing Appliances ... | STRONG HINGED WOOD DOORS. LOCKS & HANDLES BOTH SIDES.                               |
| PUMP ROOM ENTRANCES<br>Deckhouses on Flush Deck Ships ...                               | HINGED STEEL W.T. DOORS CLOSED BY CLIPS MANIPULATED BOTH SIDES.                     |



### PARTICULARS OF PROTECTION TO OPENINGS, ETC.

The following diagrams should be used to indicate the positions of cargo and coaling hatchways, gangway, cargo and coaling ports, ventilators, companionways, etc., which would affect the seaworthiness of the ship:—



Particulars of fiddle, funnel and ventilator coamings, engine room skylight and other openings in machinery casing tops and their means of closing :

ENGINE ROOM SKYLIGHTS & VENTS. STRONGLY CONSTRUCTED OF STEEL. FIDLEY GRATINGS PROTECTED BY HINGED STEEL COVERS SECURED BY CLIPS. 2 ESCAPE HATCHES 24" X 24" CLOSED BY HINGED STEEL COVERS & CLIPS.

Particulars of Flush Bunker Scuttles:— *NONE.*

Particulars of Companionways :—

ON UPPER DECK: AFT END OF FCL (S. SIDE) TO AUXILIARY PUMP ROOM:- OPENING IN TRUNK 4'-6" x 2'-0" SILL 24" WT.  
DOOR:- STEEL, HINGED & SECURED BY CLIPS MANIPULATED BOTH SIDES. X

ON POOP DECK: TO POOP SPACE & MACHINERY SPACE. OPENINGS 5'-0" x 2'-0" HINGED WOOD DOORS 2" THICK, 18" SILL, doors capable of being operated from both sides.

Particulars of Ventilators in exposed positions on freeboard and superstructure decks :—

ON UPPER DECK. 4 DECK POST VENTS SUPPORTED BY PUMP ROOM ENTRANCES. X  
" POOP " 1-10" COWL VENT. COAMING 36" HIGH X 32" TH. 6-6" COWL VENTS. 36" HIGH X 36" TH. 8-4" C.I. GOOSENECKS OPENING 36" ABOVE DK. X  
" " FRONT. TO POOP SPACE. 3-10" COWL VENTS. COAMINGS 30" HIGH X 32" TH. X  
" FORE DECK. 1-12" DIA COWL VENT. COAMING 36" HIGH X 34" TH. 5-10" COWL VENTS. 36" HIGH X 32" TH. 1-4" C.I. GOOSENECK OPENING 24" ABOVE DK. B.F.S.  
" BOW. " NIL. X

VENTILATOR COARINGS FITTED WITH WOOD PLUGS, CHAIRS COVERS UP TO CONVENTION REQUIREMENTS. ✓

Particulars of Air Pipes in exposed positions on freeboard, raised quarter, or superstructure decks :—

ON UPPER DECK For'd of BOP. 4<sup>3</sup> 3" MUSHROOM HEADS HEIGHT OF POOP AND SUPPORTED THEREBY ✓  
AFT OF FCLE 2<sup>2</sup> 3" GOOSENECKS " " FCLE " " " ✓

On POOP DECK. 6-3 $\frac{1}{2}$ " DIA MUSHROOM HEADS 24" ABOVE DECK. 7-3" DIA & 2-2" DIA GOOSENECKS OPENING 30" ABOVE DECK  
" FOLE " 2-3 $\frac{1}{2}$ " " " 24" " "

AIR PIPES FITTED WITH CLOSING ARRANGEMENTS TO CONVENTION REQUIREMENTS. ✓

Particulars of Gangway Cargo and Coaling Ports:— *NONE.*

Particulars of Scuppers and Sanitary Discharge Pipes :—

SCUPPERS AND DISCHARGES FROM SPACES IN POOP DISCHARGE THROUGH TWO NON-RETURN STORM VALVES OR ONE NON-RETURN STORM VALVE CONTROLLED FROM ABOVE POOP DECK. ✓  
 BRIDGE & FLE SPACES DRAIN ONTO UPPER DECK THROUGH SCREWED HOLES WITH BRASS PLUGS ATTACHED BY CHAINS. ✓  
 FLE ALSO DRAINS OVERBOARD THROUGH 1 1/2" DISCHARGE EACH SIDE WITH SCREEN PLUG AT UPPER DECK. ✓ BY CHAIN  
 SCUPPERS THROUGH SHEER STRAKE ABOVE UPPER DECK 8" x 3" 6 P, 6 S, 4 PIPE SCUPPERS 2 P, 2 S AT POOP FRONT &  
 AT BRIDGE FRONT THROUGH STRINGER & SHEER STRAKE 3" x 3" 6 P, 6 S, 4 PIPE SCUPPERS 2 P, 2 S AT POOP FRONT &  
 AT BRIDGE FRONT THROUGH STRINGER & SHEER STRAKE

Particulars of Side Scuttles :—

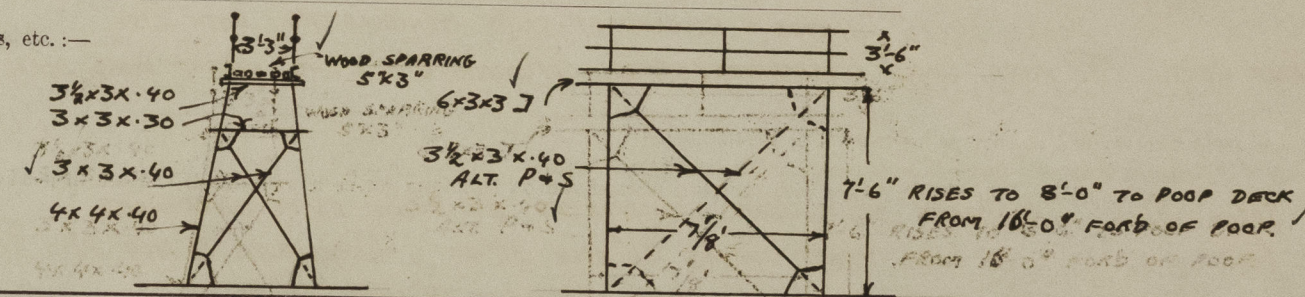
STRONG BRASS CONSTRUCTION. CAST STEEL DEADLIGHTS. 8" x 10" DIA FITTED TO POOP & BRIDGE SIDES  
POOP FRONT & BRIDGE FRONT & AFT END & F/CLE FRONT. ☒ NOT FITTED TO POOP & BRIDGE SIDES  
POOP FRONT & BRIDGE FRONT & AFT END & F/CLE FRONT

Vertical distance of Sill of lowest Side Scuttle above top of keel —

Particulars of Guard Rails :—

POOP, BRIDGE & FORECASTLE. 3'-6" HIGH 3 RAILS. STANCHIONS SPACED APPROX 4'-9" WELDED TO DECK ✓  
 UPPER DECK. ~~POOP, BRIDGE & FORECASTLE. 3'-6" HIGH 3 RAILS. STANCHIONS SPACED APPROX 4'-9" WELDED TO DECK.~~ ✓  
 " BULWARKS. 3'-6" HIGH. 30" THICK. 7" B.A. RAIL. 6" B.A. STANCHIONS SPACED 6'-0" EXTRA STIFFENING AT ERECTIONS. ✓  
 UPPER DECK. " BULWARKS. 2'-6" HIGH. 30" THICK. 7" B.A. RAIL. 6" B.A. STANCHIONS SPACED 6'-0" EXTRA STIFFENING AT ERECTIONS. ✓

Particulars of Gangways, Lifelines, etc. :—



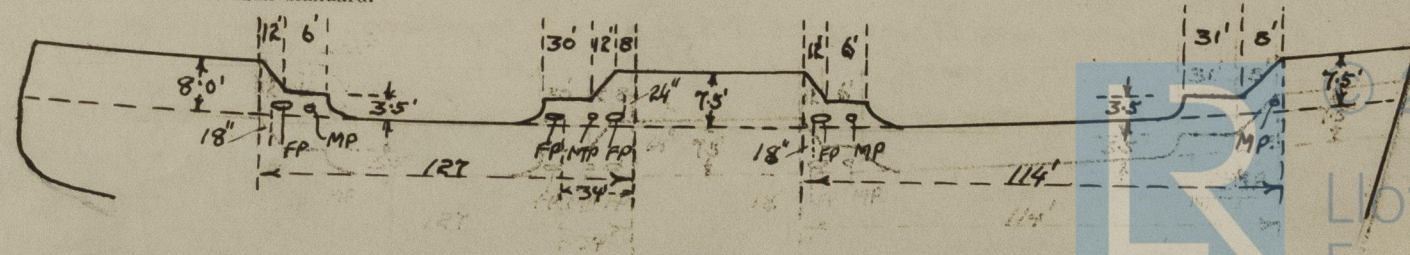
### Particulars of Freeing Arrangements.

| Particulars of Freeing Arrangements. |                   |                   |                       |                  |                                     |                           |
|--------------------------------------|-------------------|-------------------|-----------------------|------------------|-------------------------------------|---------------------------|
|                                      | Length of Bulwark | Height of Bulwark | Size of Freeing Ports | Number each side | Area each side<br>Sq. Ft.           | Rule area each side       |
| After Well ... ..                    | 68'-0"            | } SEE SKETCH      | 3'-0" x 1'-5"         | } 3              | 38.87<br>10.25<br>+ 59.0' OPEN RAIL | 7.9 ft<br>+ 59.0' OPEN RA |
| Forward Well ... ..                  | 57'-0"            |                   | 3'-0" x 1'-5"         |                  | 1                                   | 3.47<br>+ 62.0' OPEN RAIL |

|   |               |               |
|---|---------------|---------------|
| State position of each freeing port ... ..      | After Well :— | } SEE SKETCH. |
| (F. and A. position and height above deck edge) | Forward Well  |               |

State whether the freeing ports are fitted with shutters, bars, or rails, and give particulars of such:— 1 HORIZONTAL BAR.

Additional area where sheer is less than standard.





PARTICULARS OF PROTECTION TO OPENINGS, ETC.

| HATCHWAYS ON FREEBOARD AND SUPERSTRUCTURE DECKS.                            |                                |                     |  |                             |                           |           |                           |           |       |
|---|--------------------------------|---------------------|--|-----------------------------|---------------------------|-----------|---------------------------|-----------|-------|
| ON UPPER DECK   |                                |                     |  |                             |                           |           |                           |           |       |
| ON FOLE DK.   |                                |                     |  |                             |                           |           |                           |           |       |
| ON POOP DK.   |                                |                     |  |                             |                           |           |                           |           |       |
| Description of Hatchway   | TO CARGO TANKS 24 OFF CIRCULAR | TO COFFERDAMS 6 OFF | TO FUEL BURNERS 2 OFF                  | IN FOLE TO FORE PEAK STORES | TO HOLD TRIMMED TO U. DK. | TO STORES | TO STORES 20 OFF CIRCULAR | TO STORES |       |
| Dimensions of Hatchway  | 4'-0" DIA.                     | 1'-6" x 2'-0"       |  | 30" x 30"                   | 8'-0" x 8'-0"             | 18" x 14" | 15" DIA.                  | 24" x 24" |       |
| COAMINGS  | Height above Deck              | 10"                 | INVERTED ANGLES 6x3x42 WELDED TO DECK. | DITTO.                      | 8"                        | 2'-9"     | 6"                        | 5"        | 9"    |
|   | Thickness                      | .75                 |  |                             | .40                       | .40       | .40                       | .44       | .40   |
|   | Sides                          |                     |  |                             |                           |           |                           |           |       |
|   | Ends                           |                     |  |                             |                           |           |                           |           |       |
| Stiffeners  |                                |                     |  | NONE                        | 6x3x38 BA. HORIZONTAL     | NONE      | NONE                      | NONE      |       |
| Brackets, Stays   |                                |                     |  |                             |                           |           |                           |           |       |
| HATCH BEAMS   | Number                         | NONE                | NONE                                   |                             |                           |           |                           |           |       |
|   | Spacing                        |                     |  |                             |                           |           |                           |           |       |
|   | Scantling and Sketch           |                     |  |                             |                           |           |                           |           |       |
|   | Bearing Surface                |                     |  |                             |                           |           |                           |           |       |
| FORE AND AFTERS   | Number                         | NONE                | NONE                                   |                             |                           |           |                           |           |       |
|   | Spacing                        |                     |  |                             |                           |           |                           |           |       |
|   | Unsupported Lengths            |                     |  |                             |                           |           |                           |           |       |
|   | Scantling* and Sketch          |                     |  |                             |                           |           |                           |           |       |
| Bearing Surface   |                                |                     |  |                             |                           |           |                           |           |       |
| HATCH COVERS  | Material                       | STEEL               | STEEL                                  | DITTO                       | STEEL                     | STEEL     | STEEL                     | STEEL     | STEEL |
|   | Thickness                      | .42                 | .50                                    |                             | .40                       | .40       | .40                       | .40       |       |
|   | How fitted                     | HINGED              | BOLTED O.T.                            |                             | HINGED                    | HINGED    | HINGED                    | HINGED    |       |
|   | Bearing Surface                | CLIPS               |  |                             | CLIPS                     | CLIPS     | CLIPS                     | CLIPS     |       |
| Spacing of Cleats   |                                |                     |  |                             |                           |           |                           |           |       |
| Number of Tarpaulins  |                                |                     |  |                             |                           |           |                           |           |       |
| *Are wood fore and afters steel shod at all bearing surfaces ?              |                                |                     |  |                             |                           |           |                           |           |       |
| Are battens and wedges efficient and in good condition ?                    |                                |                     |  |                             |                           |           |                           |           |       |
| Are tarpaulins in good condition and in accordance with rule requirements ? |                                |                     |  |                             |                           |           |                           |           |       |
| Are lashings provided in accordance with rule requirements ?                |                                |                     |  |                             |                           |           |                           |           |       |

Particulars of any special features :—

Endorsement at first survey and at surveys for renewal of Certificate :—

The fittings and appliances are in accordance with the particulars shown on this form (or as now modified) and are in good condition.



© 2020

Lloyd's Register Foundation