

OWNERS -  
THE AUSTRALIND STEAM SHIPPING CO. LTD.

TRADER, ANDERSON & CO. } JOINT MANAGERS  
BITHELL, GUNN & CO. }

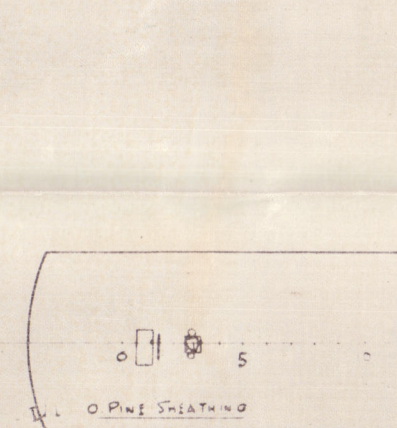
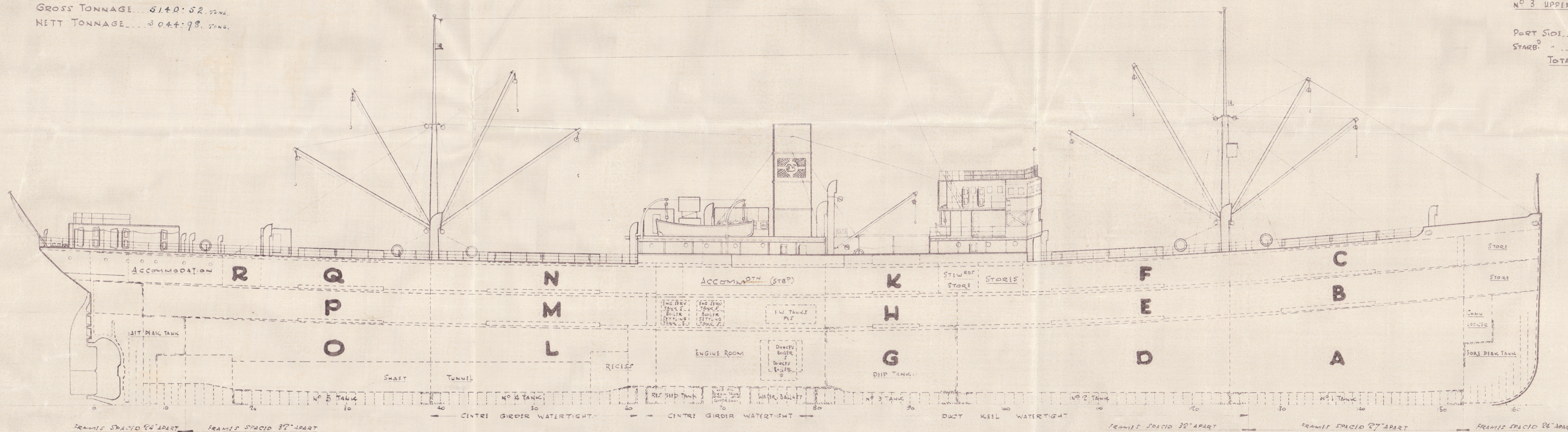
LONDON

JANUARY, 1920.

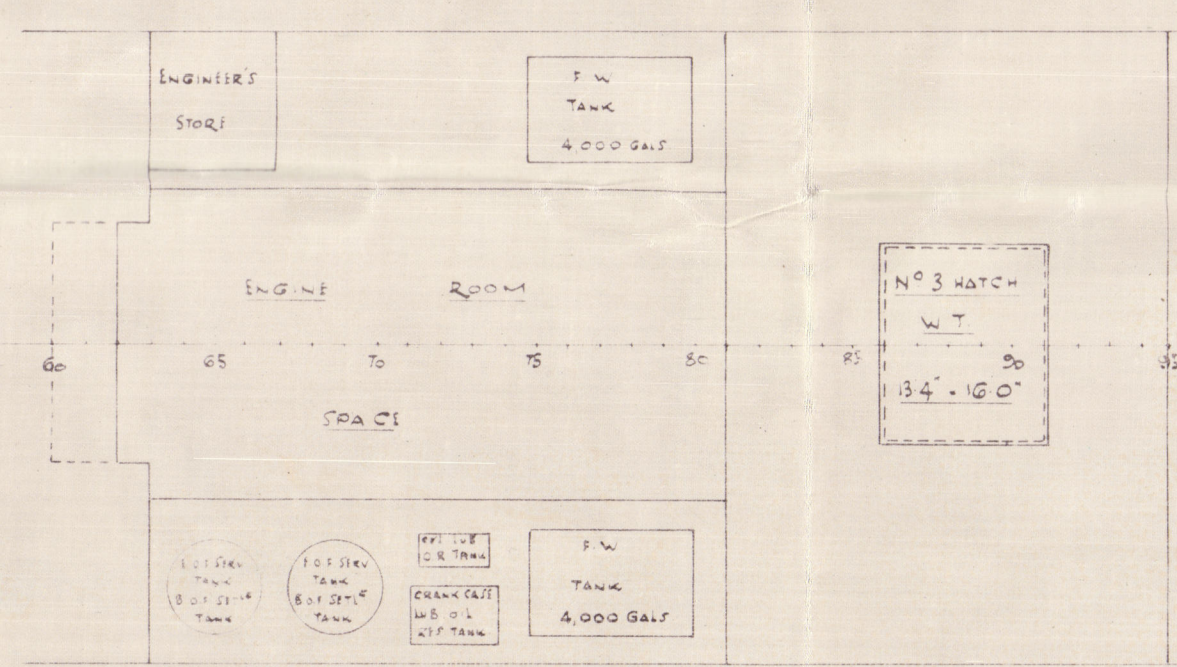
DIMENSIONS: 410'0" x 54'0" x 29' 9 1/2"  
LENGTH OVERALL 425'4"  
RISE OF FLOOR 6"  
GROSS TONNAGE 5140.52 TONS  
NETT TONNAGE 3044.98 TONS

# M. S. "ARMADALE". CAPACITY PLAN.

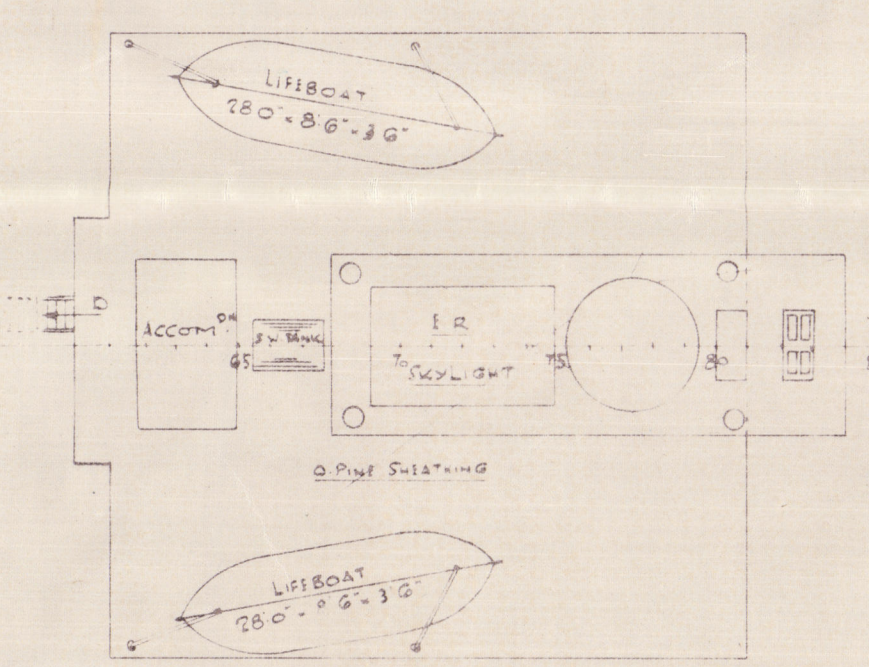
SCALE: 1/16" = 1 FOOT.



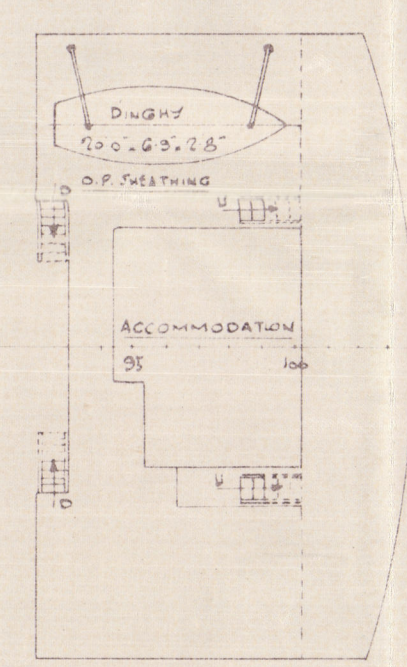
AFT DK. HOUSE TOP.



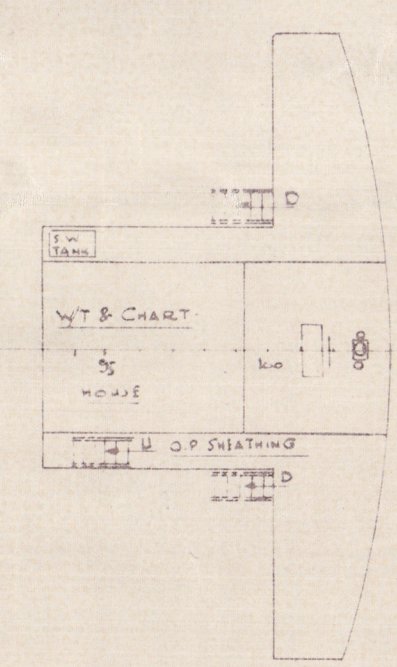
MAIN DECK.



AFT BOAT DECK.



FOR'D BOAT DECK.



NAV. BRIDGE DECK.

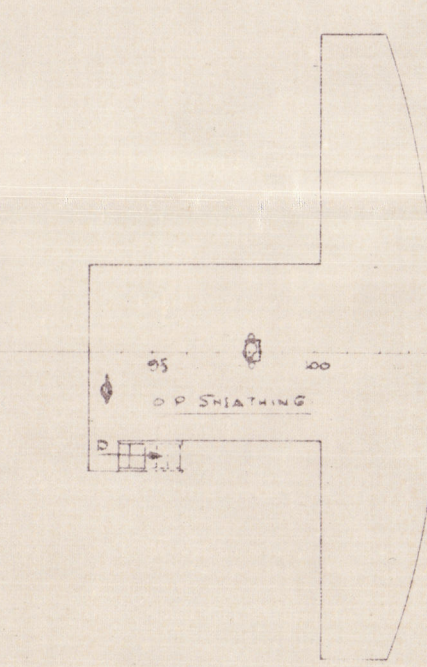
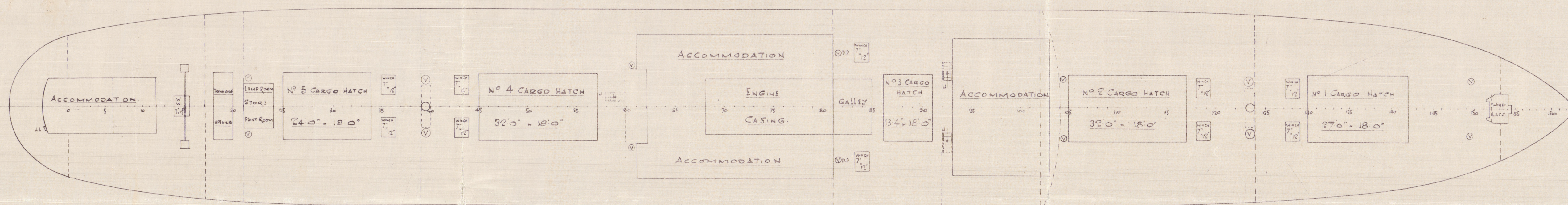
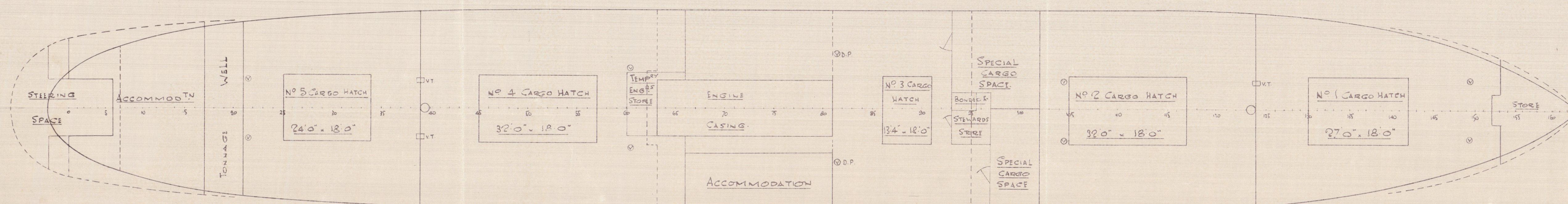


CHART & WHEELHOUSE TOP.



SHELTER DECK.



UPPER DECK.

HATCHWAYS	DERRICKS	WINCHES	BALE CAPACITIES	GRAIN CAPACITIES
NO 1 27'0" x 18'0" 27'0" x 18'0" 27'0" x 18'0"	TWO 5 TON AT SIDES OF MAST	TWO 7" x 12"	NO 1 HOLD 50080 Cu. Ft.	54920 Cu. Ft.
NO 2 32'0" x 18'0" 32'0" x 18'0" 32'0" x 18'0"	TWO 10 " " " "	TWO 7" x 12"	NO 1 LOWER TWEEN DECK 21720	24020
NO 3 13'4" x 16'0" 13'4" x 18'0" 13'4" x 18'0"	TWO 5 " ON SAMSON POSTS	TWO 7" x 12"	NO 1 UPPER 15927	22470
NO 4 32'0" x 18'0" 32'0" x 18'0" 32'0" x 18'0"	TWO 10 " AT SIDES OF MAST	TWO 7" x 12"	NO 2 HOLD 71040	76320
NO 5 24'0" x 18'0" 24'0" x 18'0" 24'0" x 18'0"	TWO 5 " " " "	TWO 7" x 12"	NO 2 LOWER TWEEN DECK 32610	36600

(INCLUDED IN THIS TOTAL)

\* SPECIAL CARGO SPACE IN

NO 3 UPPER TWEEN DECK

BALE CAPS 4947 Cu. Ft.

PORT SIDE 4414 Cu. Ft.

STARBOARD 2643 - 2962 -

TOTAL = 7057 Cu. Ft.

GRAN CAPS 4947 Cu. Ft.

NO 3 HOLD 31740

NO 3 LOWER TWEEN DECK 16050

\* NO 3 UPPER 27803

NO 4 HOLD 47720

NO 4 LOWER TWEEN DECK 47000

NO 4 UPPER 25550

NO 5 HOLD 34940

NO 5 LOWER TWEEN DECK 28010

NO 5 UPPER 17520

UPPER TWEEN DECK 417

NO 1 HATCH - SCALING 1430

NO 2 1710

NO 3 720

NO 4 1710

NO 5 1280

TOTALS = 483506 Cu. Ft.

GRAIN 534245 Cu. Ft.

TOTAL 479936 Cu. Ft.

THE FIGURES GIVEN ON THIS  
PLAN ARE GIVEN IN GOOD  
FAITH BUT ARE NOT GUARANTEED.

WATER TANKS  
ENGINE ROOM TANK 20 TONS

FRESH WATER TANKS  
TANK MAIN DECK AND MIDSHIP 17 1/2 TONS

TOTAL = 35 TONS

ENGINE OIL FUEL  
CAPACITY AT 80 SPECIFIC GRAVITY

NO 1 TANK 108 TONS

NO 2 239

NO 3 143

NO 5 80

SETTLING TANKS (2 TANKS) 8

TOTAL = 568 TONS

BOILER OIL FUEL  
CAPACITY AT 80 SPECIFIC GRAVITY

NO 4 TANK 176 TONS

SETTLING TANKS (2 TANKS) 11

TOTAL = 187 TONS

STORE ROOMS

COLD STORE (2 COMPARTMENTS) 410 Cu. Ft.

FLOUR 465

PAINT 541

DECK AND LAMP RM 271

ENGINE (AFTER CASING UPPER DECK) 1450

DECK STORES AFT UPPER DECK 640

ENGINE 280

STOWED DRY STORES 883

BOWD STORE 272

STORE FORWARD 2210

MAIN 1910

TOTAL = 9332 Cu. Ft.

WATER BALLAST

NO 1 TANK 123 TONS

NO 2 273

NO 3 163

NO 4 202

NO 5 80

ENGINE ROOM TANK 184

DEEP TANK 1025

FORE PEAK TANK 83

AFT 111

TOTAL = 2229 TONS

SCALE OF DEADWEIGHT  
FREEBOARD & TONS PER INCH

SUMMER DRAFT 26' 4 1/2"

3100 TONS.

SCALE OF DEADWEIGHT

SCALE OF DEADWEIGHT

SCALE OF DEADWEIGHT

SCALE OF DEADWEIGHT

SCALE OF DEADWEIGHT

SCALE OF DEADWEIGHT

SCALE OF DEADWEIGHT

SCALE OF DEADWEIGHT

SCALE OF DEADWEIGHT

SCALE OF DEADWEIGHT

SCALE OF DEADWEIGHT

SCALE OF DEADWEIGHT

SCALE OF DEADWEIGHT

SCALE OF DEADWEIGHT

SCALE OF DEADWEIGHT

SCALE OF DEADWEIGHT

SCALE OF DEADWEIGHT

SCALE OF DEADWEIGHT

SCALE OF DEADWEIGHT

SCALE OF DEADWEIGHT

SCALE OF DEADWEIGHT

SCALE OF DEADWEIGHT

SCALE OF DEADWEIGHT

SCALE OF DEADWEIGHT

SCALE OF DEADWEIGHT

SCALE OF DEADWEIGHT

SCALE OF DEADWEIGHT

SCALE OF DEADWEIGHT

SCALE OF DEADWEIGHT

SCALE OF DEADWEIGHT

SCALE OF DEADWEIGHT

SCALE OF DEADWEIGHT

SCALE OF DEADWEIGHT

SCALE OF DEADWEIGHT

SCALE OF DEADWEIGHT

SCALE OF DEADWEIGHT

SCALE OF DEADWEIGHT

SCALE OF DEADWEIGHT

SCALE OF DEADWEIGHT