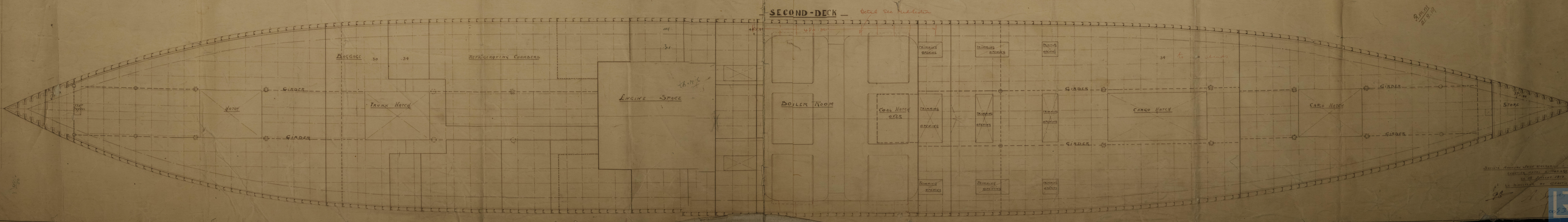
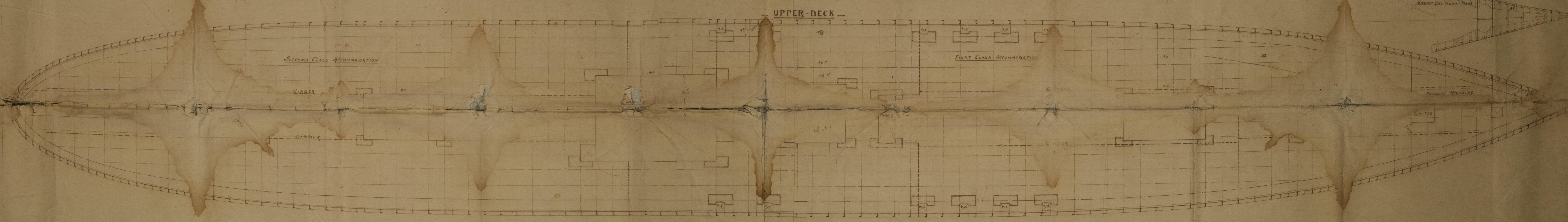
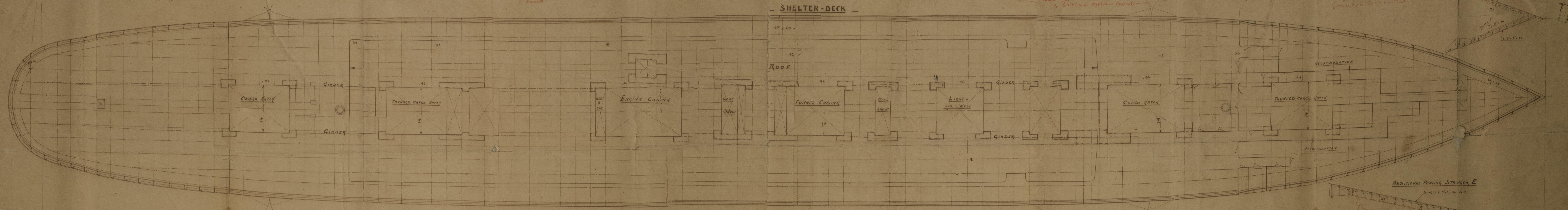
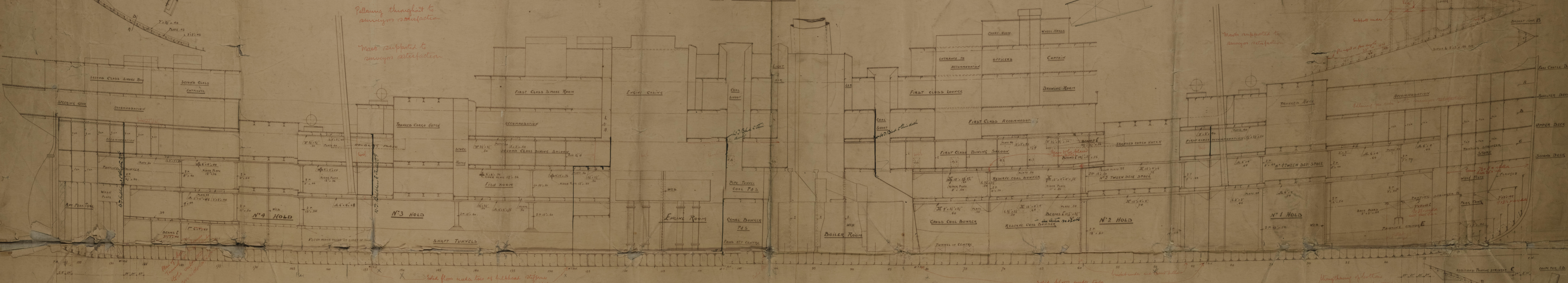


715  
21/8/19

# N°562-563 T.S. SHELTER-DECK STEAMSHIP THE "BELGE MARITIME" DU CONGO

RULE DIMENSIONS 440'-0" x 56'-3 3/8" x 21'-0" TO UPPER-X 37' TO SHELTER-DECK MID.  
SCANTLING NUMBERS 85.8334 377665 - PROPORTION LENGTH-11.81 DEPTHS TO SHELTER-DECK "d." (UNDER) 16.00

SCALE 1/64" TO FOOT

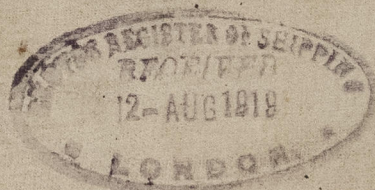




See Anon<sup>e</sup> JOHN COCKERILL

NOS 562 & 563

PROFILE & DECK PLANS



"MARISTRELLA"

Elizabethville

M/M 5382

Center Book



© 2021

Lloyd's Register  
Foundation

005377-005386-0219