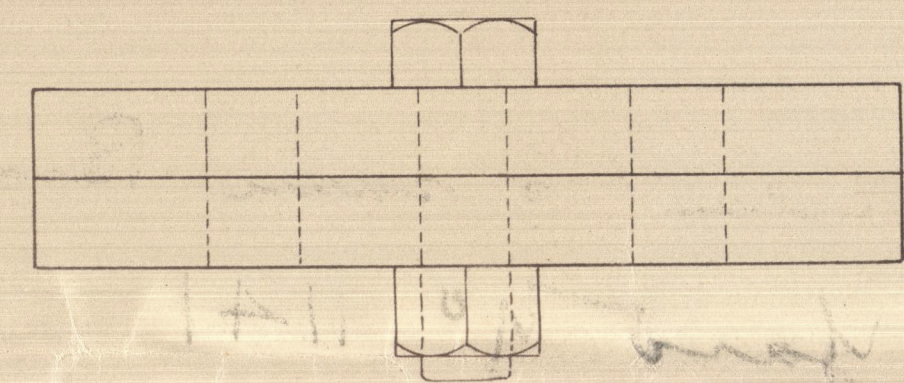
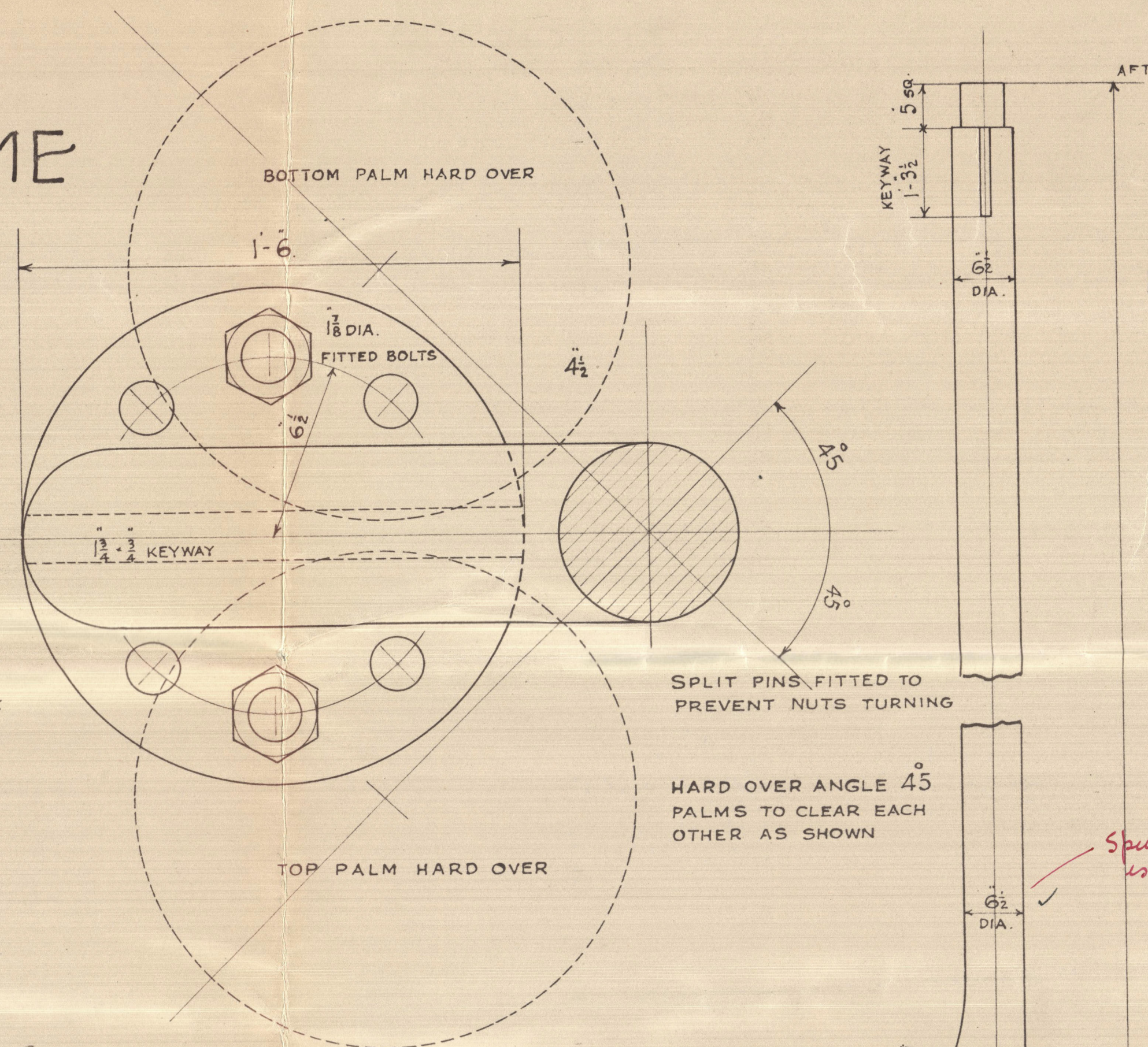


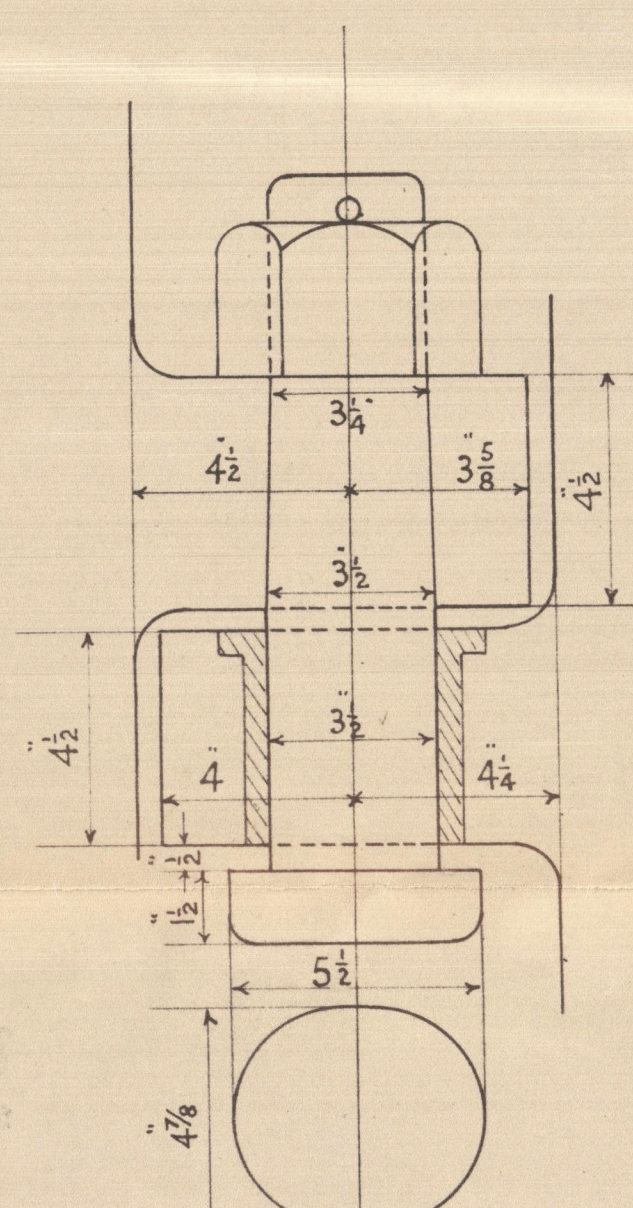
# RUDDER-FRAME FORGED IRON TO LLOYDS TESTS.



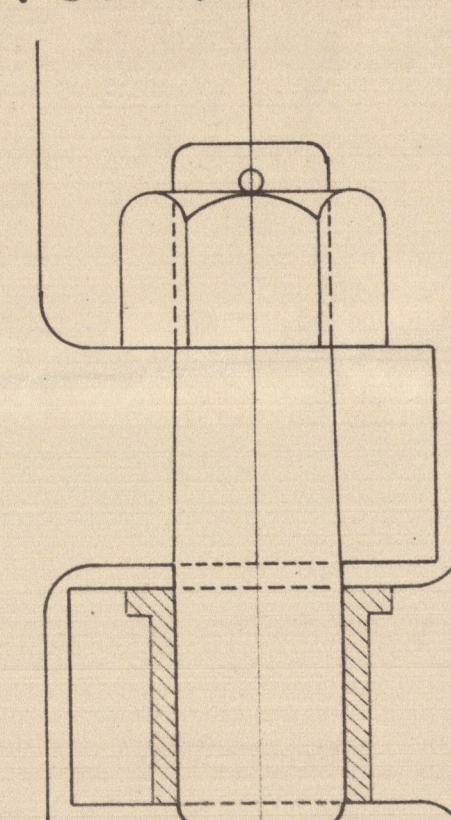
COUPLING BOLTS TO BE SHIPPED FROM THE TOP, WITH NUTS SCREWED UP FROM UNDER SIDE



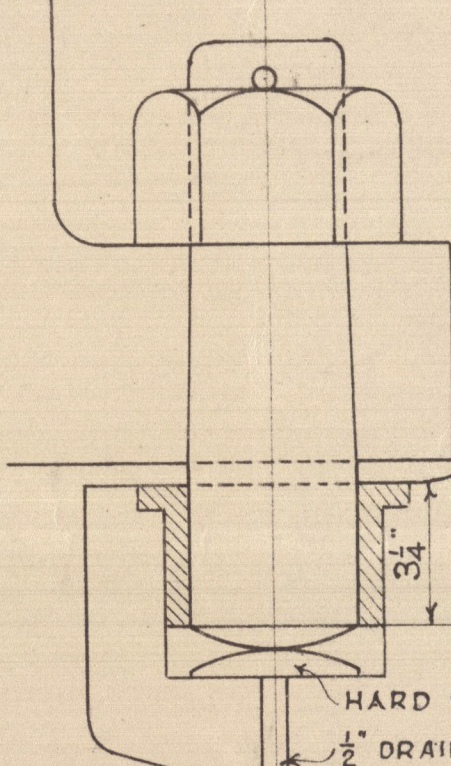
DETAIL OF COUPLING



TOP PINTLE



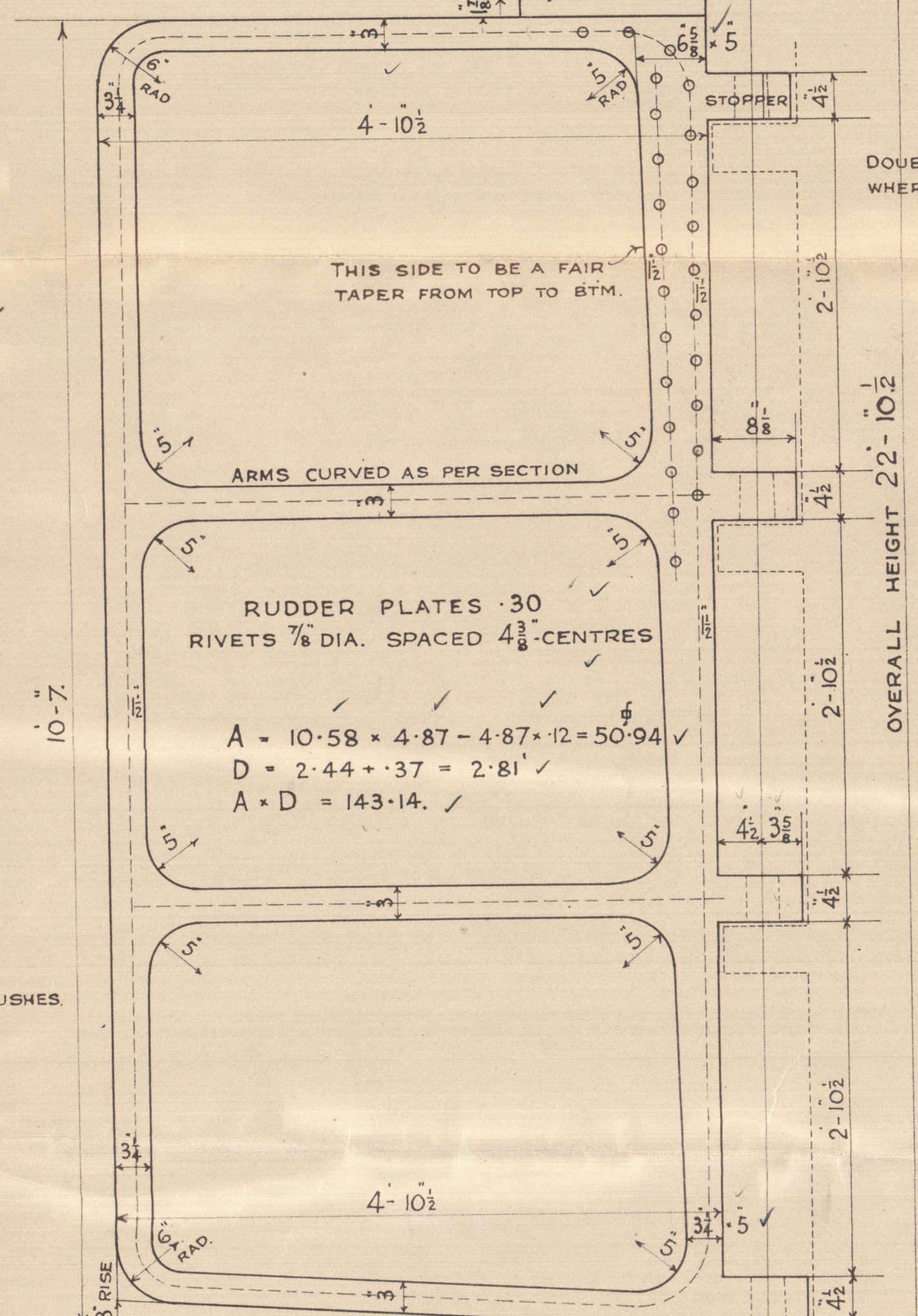
INTERMEDIATE PINTLES



BOTTOM PINTLE

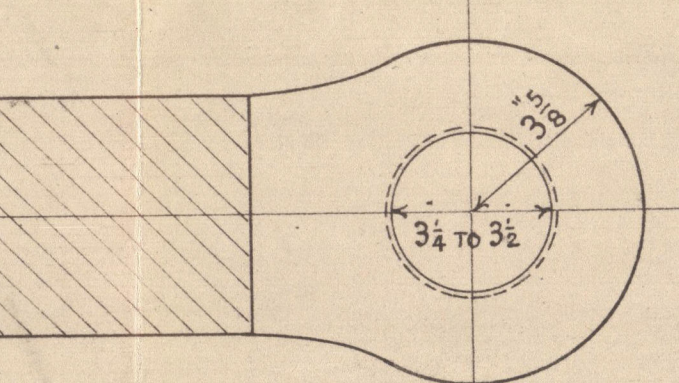
PINTLES TO HAVE NOT MORE THAN 1/2" CLEARANCE IN BUSHES

GUDGEONS ON STERN-FRAME TO BE BORED TRUE AND ALIGNED BEFORE FITTING TURNED STEEL BUSHES.



OUTLINE SECTION OF BLADE

DOUBLE ROW OF HOLES TO BE DRILLED WHERE SHOWN - SINGLE ELSEWHERE



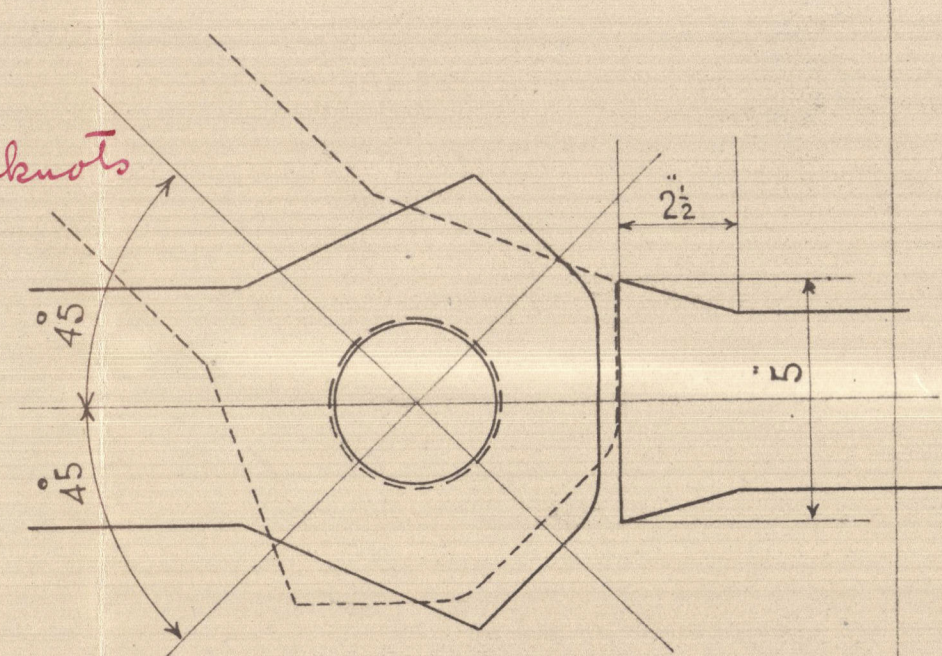
RUDDER GUDGEONS EXCEPT TOP

UPPER AND LOWER SURFACES OF GUDGEONS TO BE SQUARE TO POST AND DEAD LEVEL SO THAT PINTLE NUTS MAY BEAR TRUE ON SAME.

RUDDER HEAD.

NOs 1155-'56 & '58.

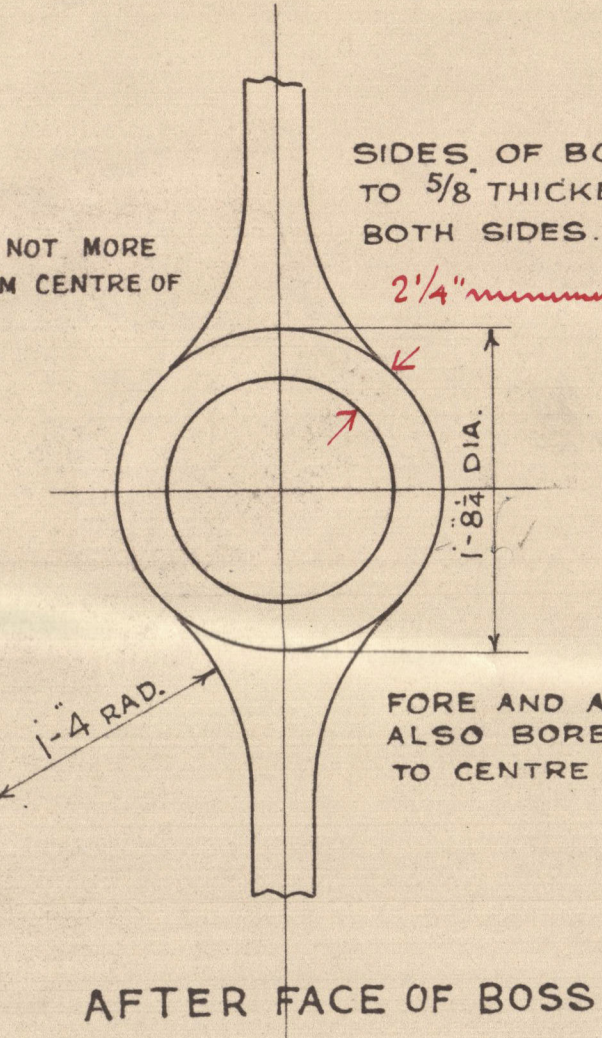
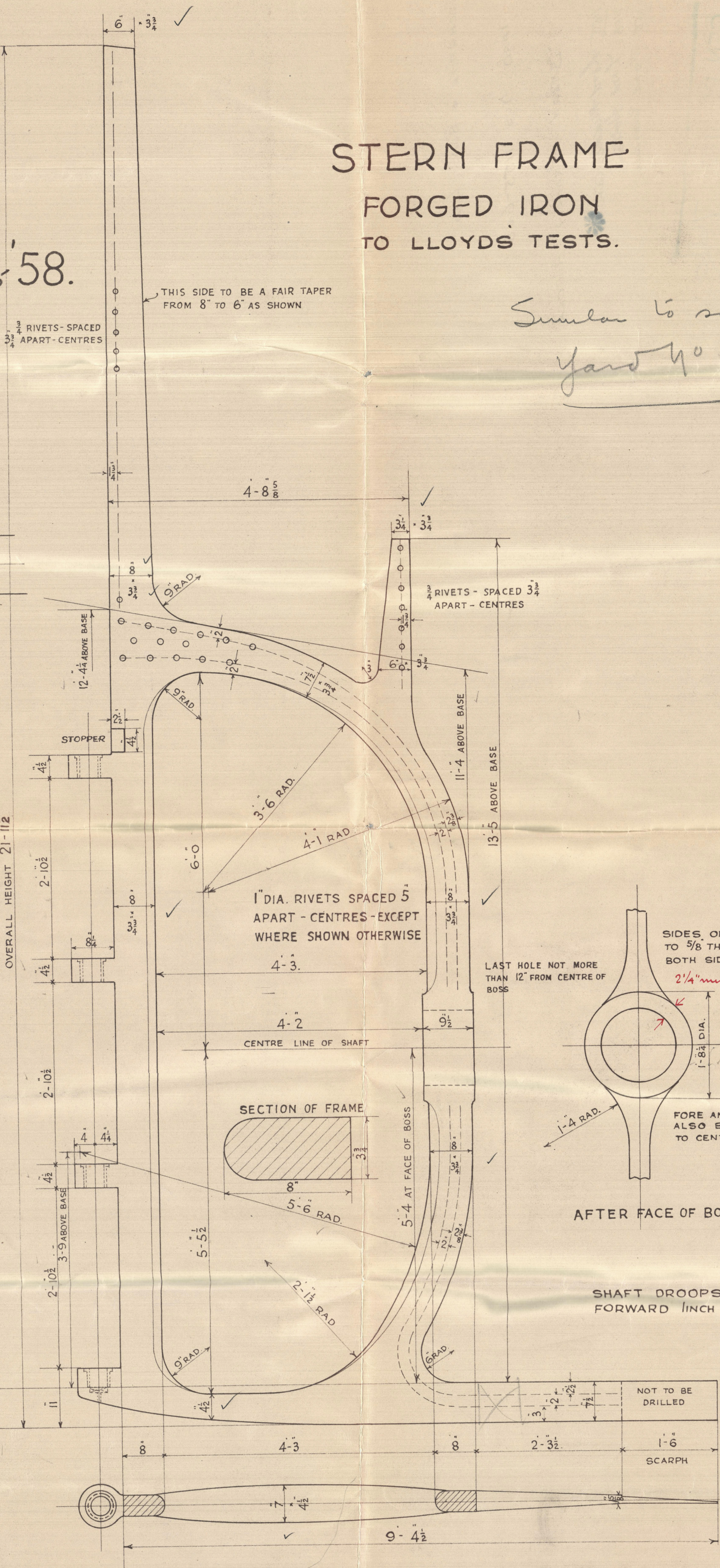
SCALE 1 IN. = 1 FT.  
DETAILS 3 INS. = 1 FT.



DETAIL OF STOPPER

# STERN FRAME FORGED IRON TO LLOYDS TESTS.

Similar to same Builder  
yard 40 1141



AFTER FACE OF BOSS

SHAFT DROOPS FROM AFT TO FORWARD 1/16" IN 10'-3 1/4"

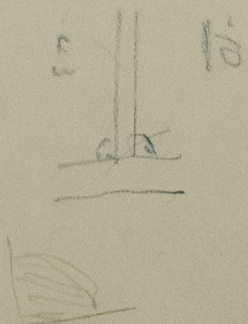
SIDES OF BOSS TO BE TAPERED TO 5/8" THICKER AT FORE END ON BOTH SIDES.  
2 1/4" minimum finished  
NO 1155 - 14 1/8 ROUGH BORE  
NO 1156 - 14 1/4 " " "  
NO 1158 - 14 1/4 " " "  
FORE AND AFTER FACES OF BOSS ALSO BORE OF BOSS TO BE SQUARE TO CENTRE LINE OF SHAFT

3 7/8  
6  
2050

1 1/2  
6  
17 0



005377-005386-0131



© 2021

Lloyd's Register  
Foundation



PLAN NO. 3550  
FOR ENCLOSURE TO  
Messrs. Lloyd's R.  
of S. Hull FROM  
COCHRANE & SONS, LTD.  
SHIPBUILDERS, SELBY.  
DATE 14/12/35

*off*



© 2021

Lloyd's Register  
Foundation


005377 - 005388 - 0131



COCHRANE & SONS LTD

YARD NOS 1155-608

STERN FRAME & RUDDER

1155 Lord Middle ton 

1156. Lord Holham

1158. Lord Essendon

Office

GEN BOX NO

746

3



© 2021

Lloyd's Register  
Foundation

005377-005386-0131