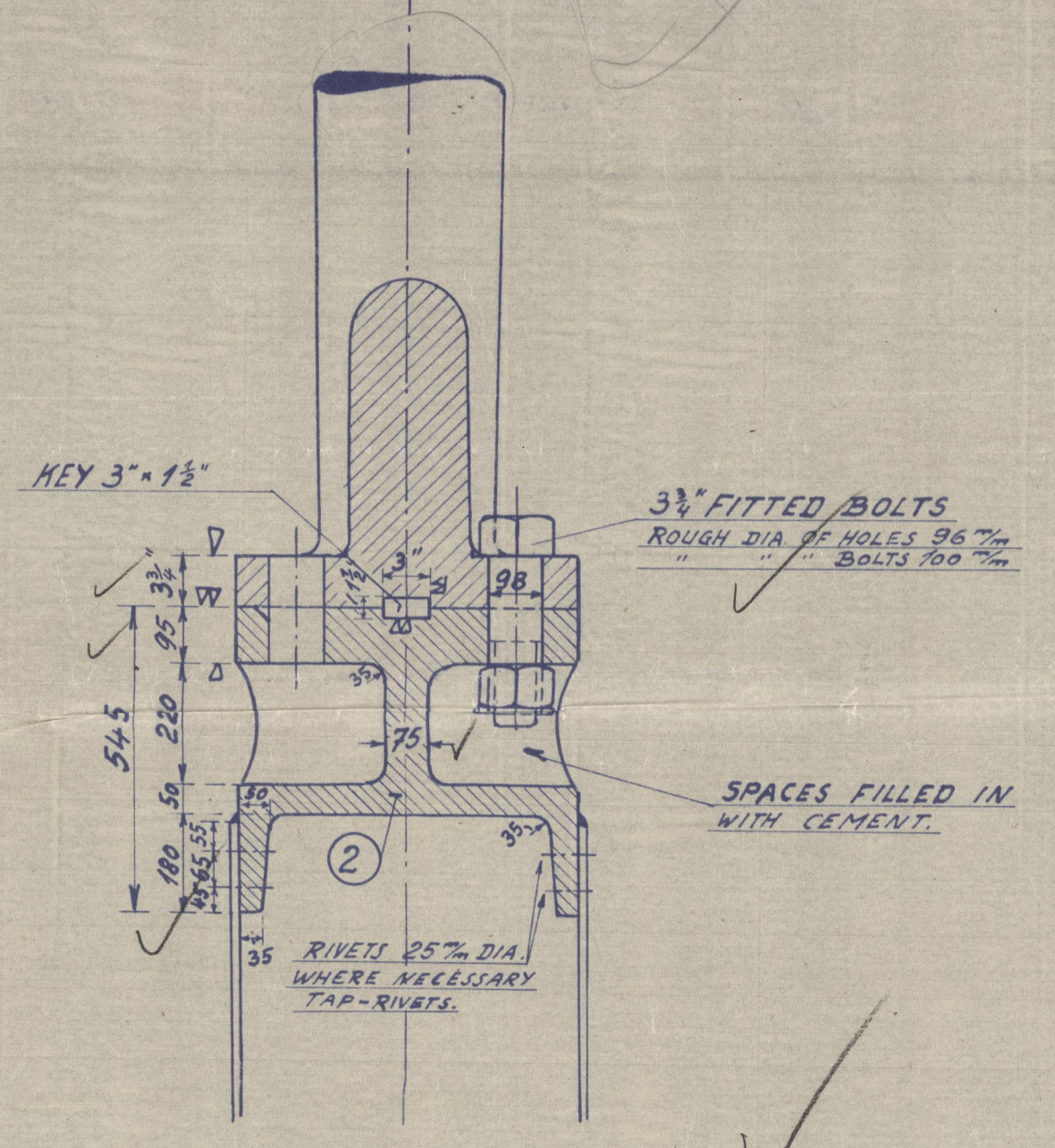


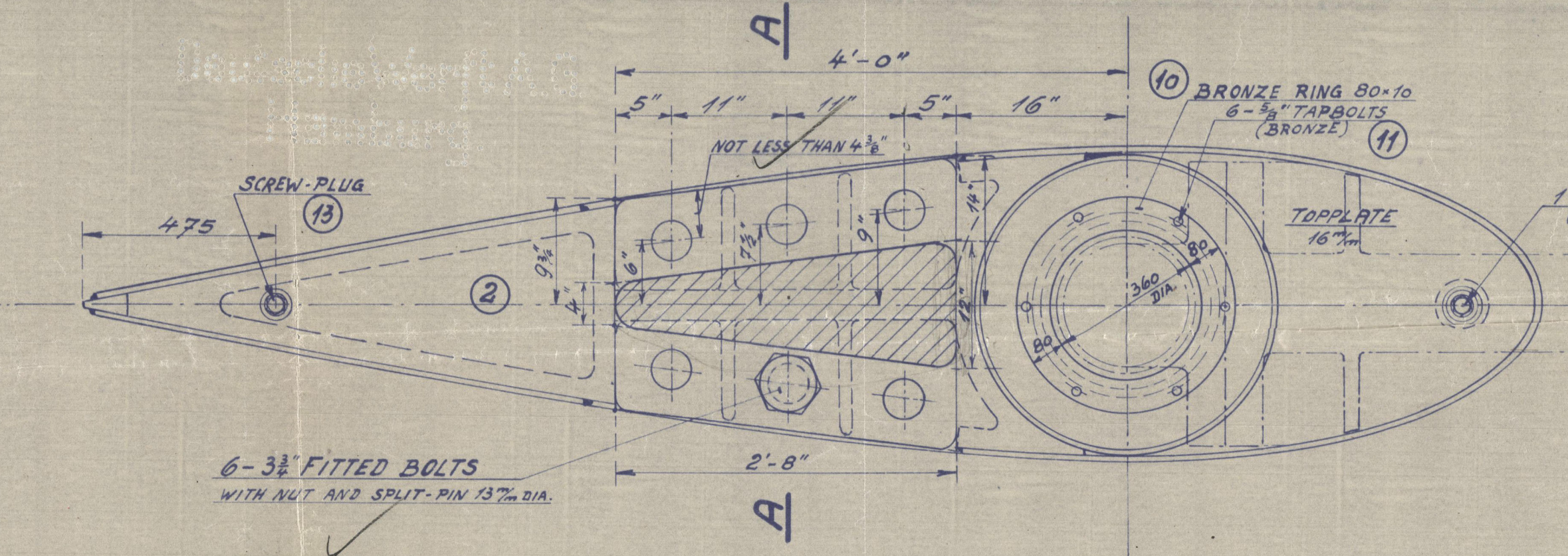
Rules for application of law to be complied with.  
 Addition to be made in the register book - Rudder electrically welded.

# SECTION: A-A.

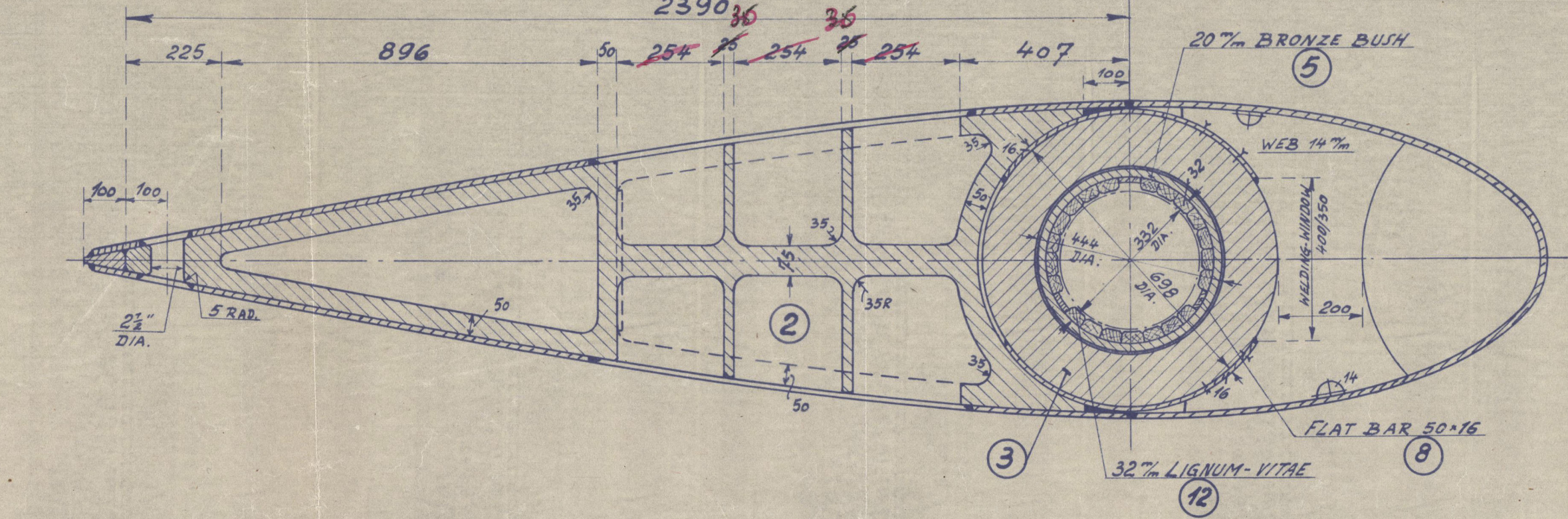


# SECTION: B-B.

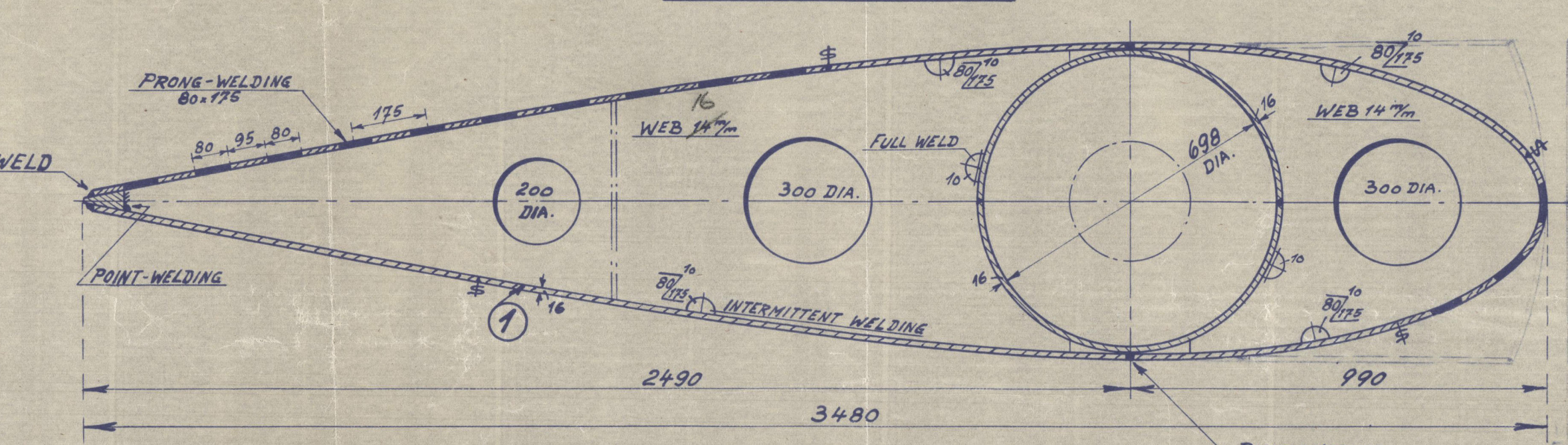
SCALE 1:12.



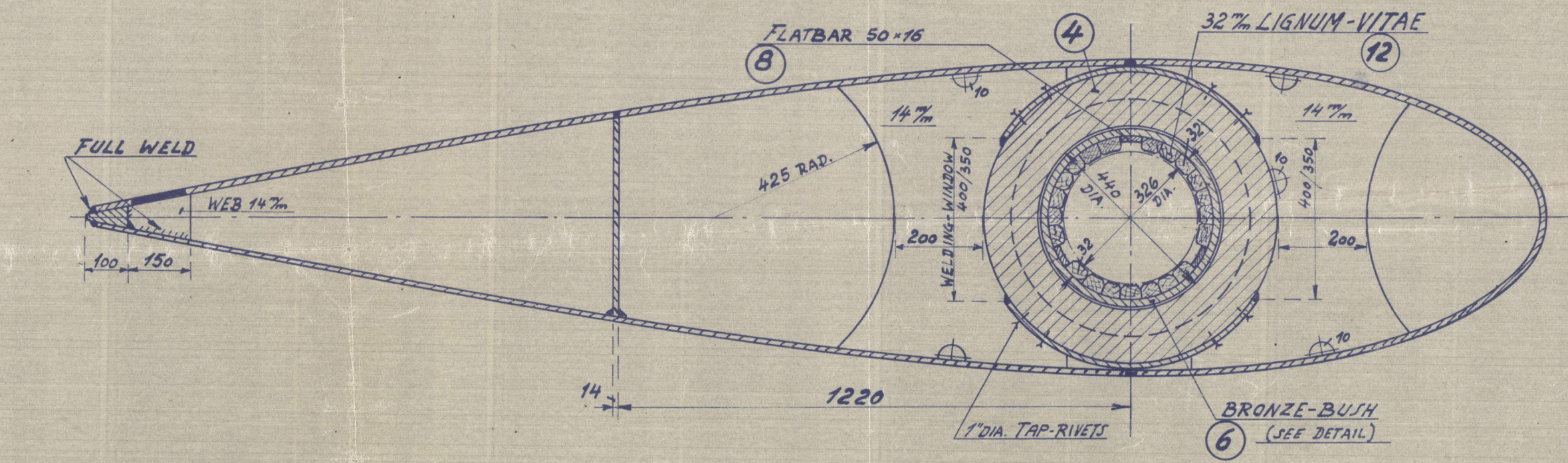
# SECTION: C-C.



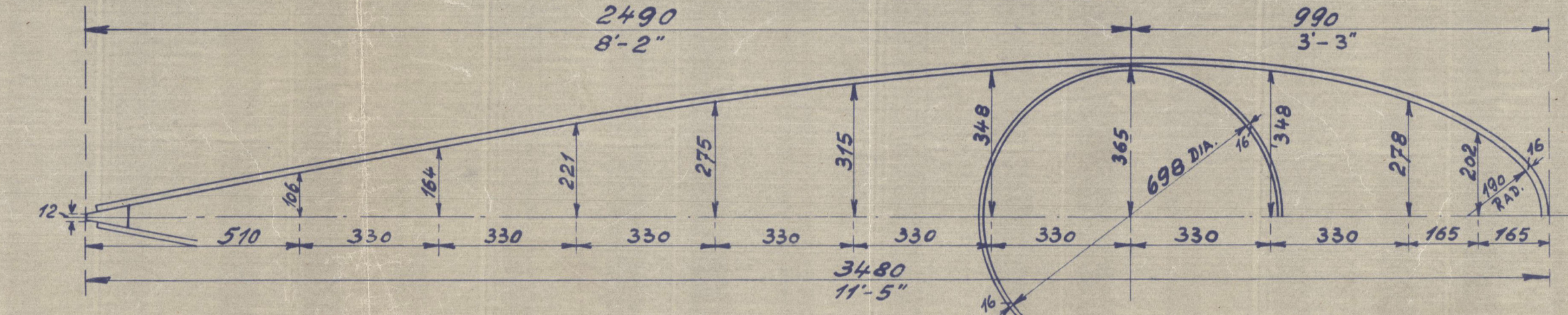
# SECTION: D-D.



# SECTION: E-E.

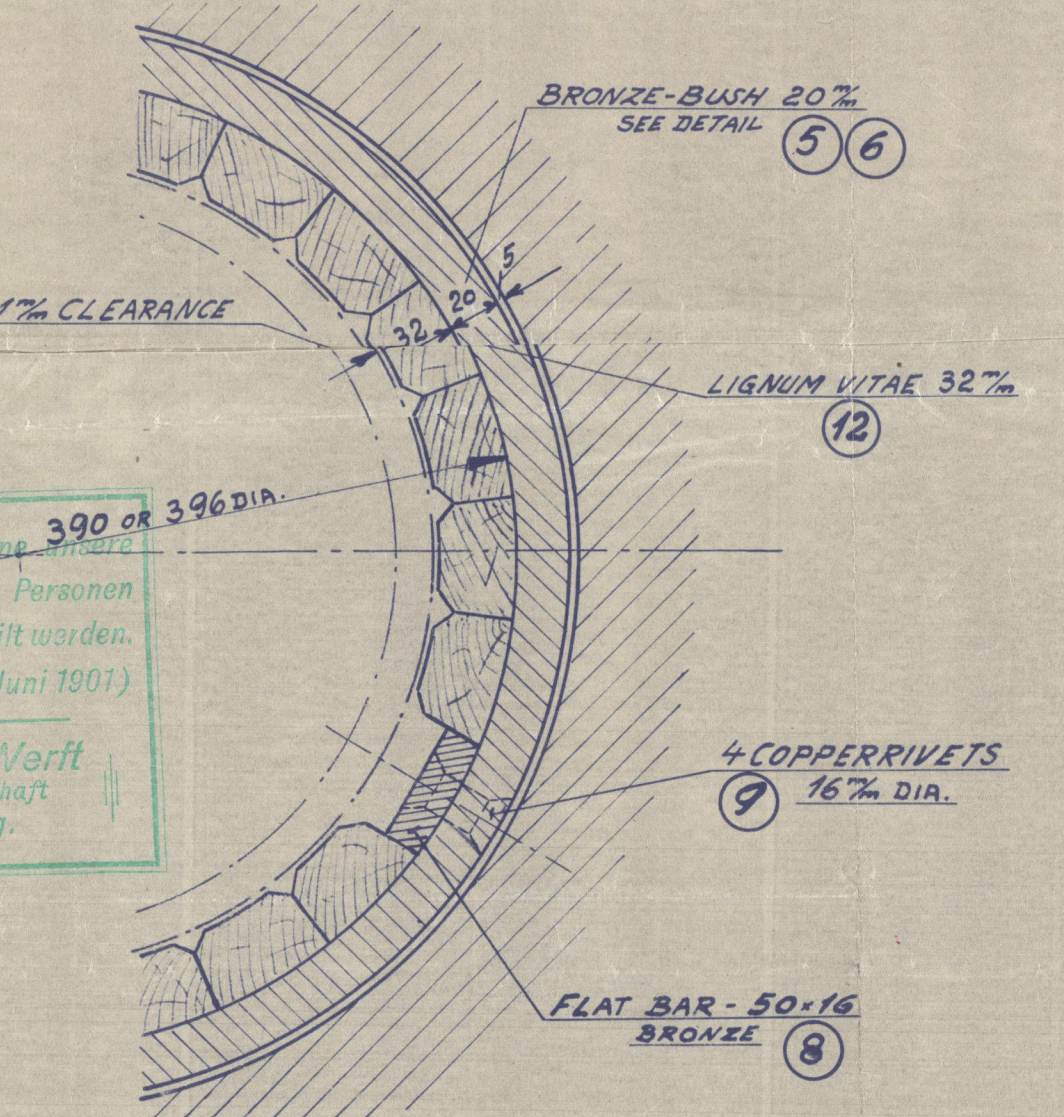


# PROFILE OF RUDDER.



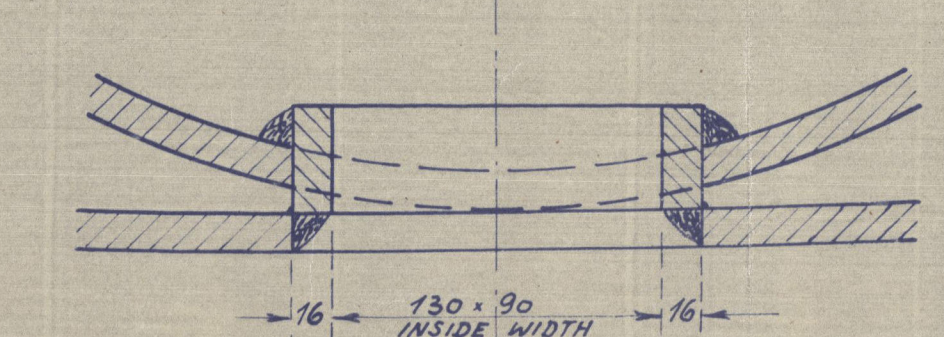
# DETAIL OF LIGNUM-VITAE BUSHES 1:3.

4\"/>



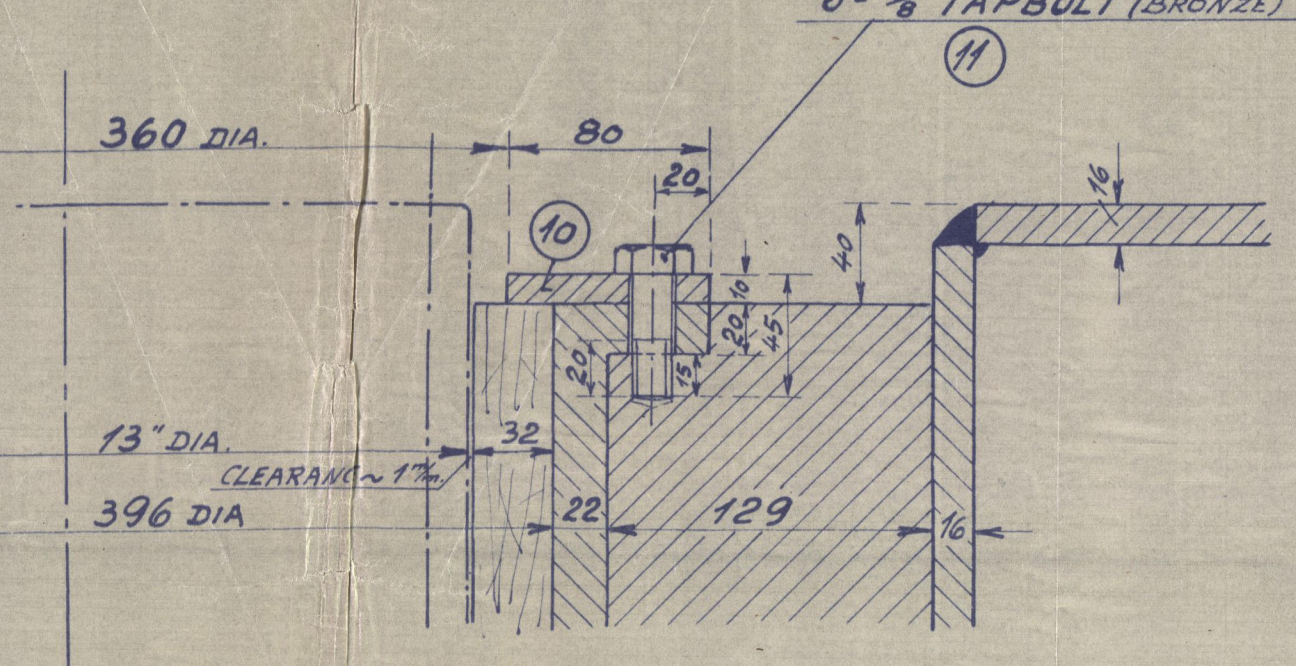
# DETAIL OF HANDHOLE.

1:3. 4\"/>

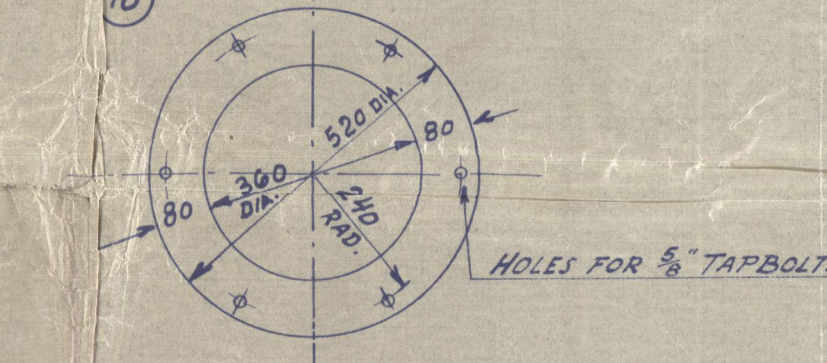


# DETAIL UPPER BRONZE BUSH.

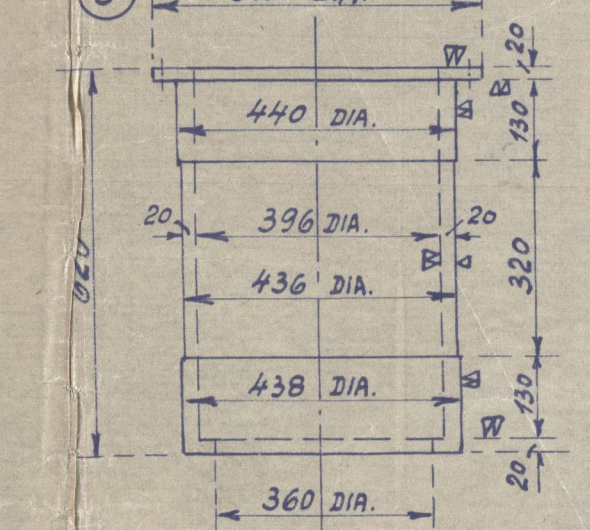
SCALE 1:3. 4\"/>



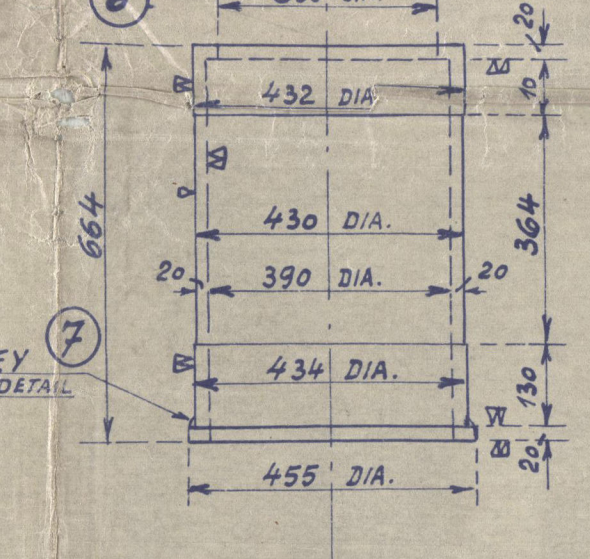
# BRONZING 1:12.



# UPPER BRONZE BUSH.



# LOWER BRONZE BUSH.



# DIMENSIONS.

LENGTH	500'-0"	152.397 m.
BREADTH	64'-6"	19.659 "
DEPTH	37'-0"	11.222 "
DRAFT	29'-3"	8.915 "
SPEED OF VESSEL	13 KNOTS	
RUDDER AREA	212 sq. ft.	19.6 m <sup>2</sup>

# TO TEST: LLOYD'S REGISTER OF SHIPPING.

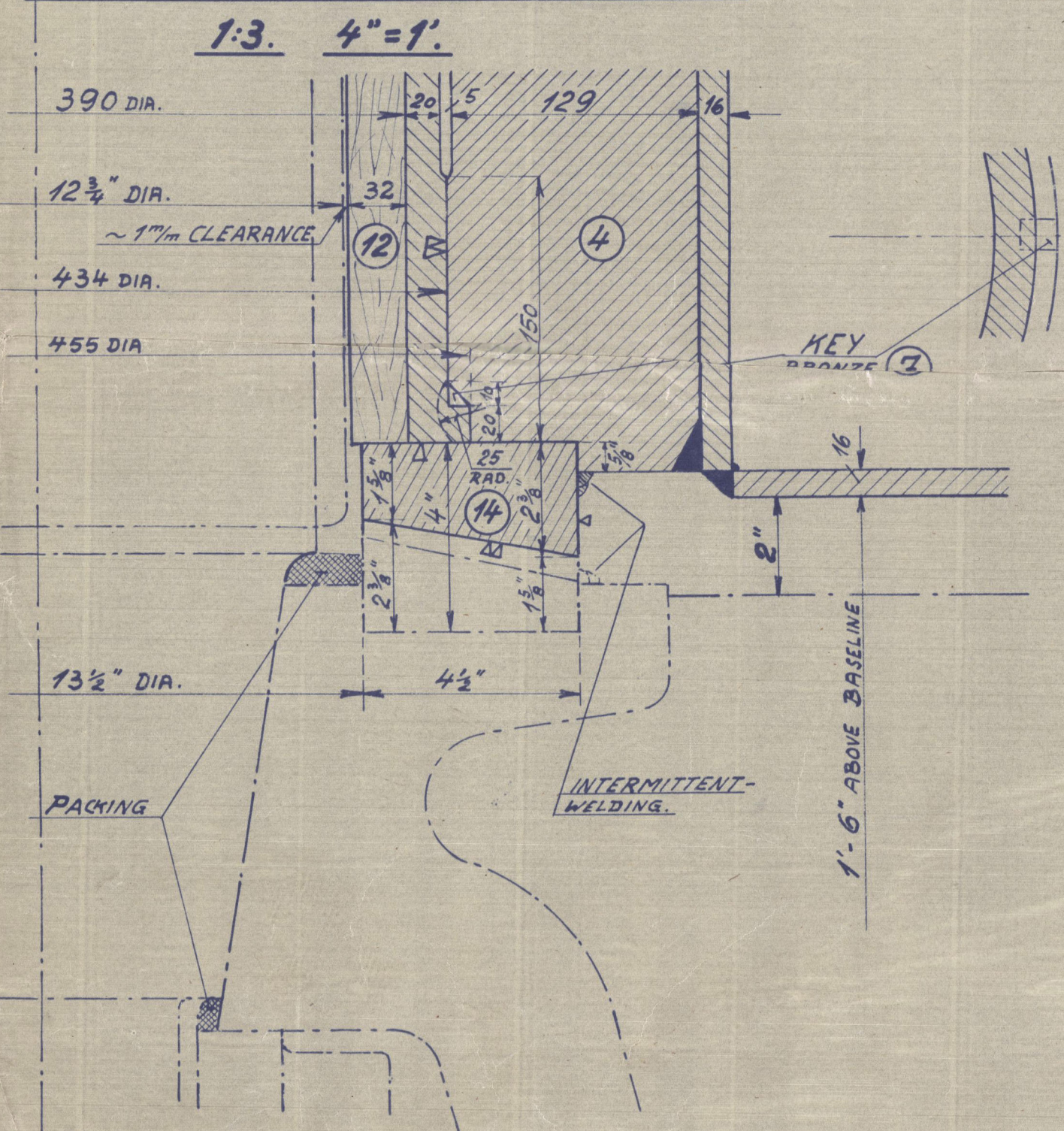
POS. NO.	OBJECTS	MATERIAL	REMARKS
1	RUDDERBODY	FORGED IRON	
2	COUPLING-PIECE	CAST STEEL	
3	UPPER-BEARING	"	
4	LOWER "	"	
5	UPPER BRONZE-BUSH	BRONZE METAL #2 (CUT-1), P&O	
6	LOWER " "	"	
7	KEY	"	
8	FLAT BAR - 50 x 16	"	
9	COPPER-RIVETS 16 <sup>1</sup> / <sub>2</sub> " DIA.	COPPER	
10	BRONZE RING - 80 x 10	BRONZE METAL	
11	1/2" DIA. TAPBOLT	"	
12	LIGNUM VITAE-BUSH	LIGNUM VITAE	
13	SCREW PLUG, 1" GAUGE-THREAD	BRONZE METAL	
14	UPPER BEARING RING	FORGED STEEL	

# NOTES:

1. THE FORWARD AND AFTER PART OF THE RUDDER IS TO BE FILLED WITH SOLUTION AND SUBJECTED TO A PRESSURE OF 15 POUNDS PER (S INCH) IN ANY POSITION AND WILL HAVE TO BE ASSESSED BY ROYAL AFTER THAT THE SOLUTION HAS BEEN TO BE REMOVED AGAIN AND THE SCREW-PLUGS TO BE INVERTED.
2. INSIDE PIPE IN THE RUDDER IS TO BE PAINTED WITH SOLUTION.
3. ALL WELDING-WORKS ARE TO BE ACCOMPANIED VERY CAREFULLY.
4. SPECIAL CARE THAT THE RUDDER-IRON IS FINISH WITH THE RUDDER-BEARING FOR THE CYLINDRICAL RUBBER-SPLIT.
5. CYLINDRICAL RUBBER-POST AND CONNECTION WITH FRAMEWORK SEE SEPARATE DRAWING.

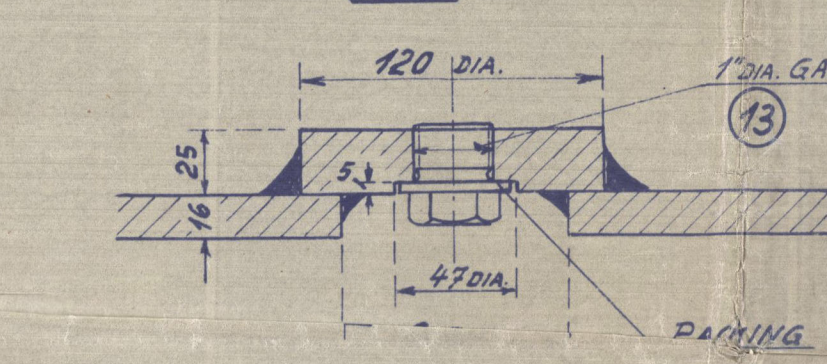
# DISPOSITION OF BEARING RINGS.

1:3. 4\"/>



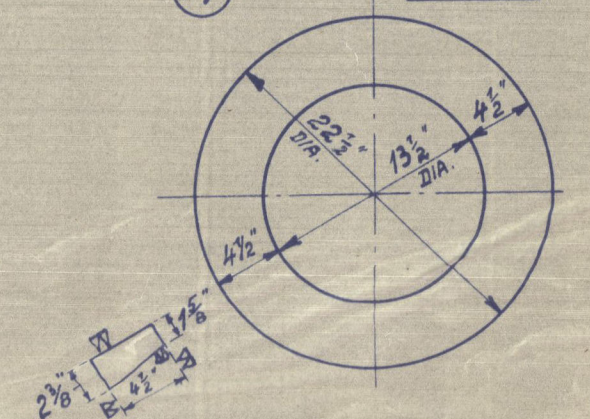
# DETAIL OF SCREW-PLUG.

1:3.



# UPPER BEARING RING.

1:12.



Rules for application of law to be complied with.  
 Addition to be made in the register book - Rudder electrically welded.

N.V. NEDERLANDSCHE SCHEEPSBOUW Mij. YARD N° 272/73. A.R. 866/73.  
 SWAN, HUNTER, & WIGHAM RICHARDSON, LTD. YARD N° 15614/1563. A.R. 866/1564.

Deutsche Werft Hamburg

15000 TON TANKER  
 11.11.1938 • 0096  
 SIMPLEX-BALANCED-RUDDER.  
 1.24.1.12.

JAR 401

005377-05326-0029



Balanced Rudder

Nederlandsche Sheepsbouwer Mij.'s Gard Nos. 272 en 273.

Swan, Hunter & Wigham Richardson Ltd.'s Yard Nos. 156<sup>1</sup>/<sub>4</sub>. 1563.

Letter 14.2.38

" TIBIA "

RECORDS DEPT.:  
LONDON.

It was a  
miserable  
thing  
which was  
the cause of  
the trouble.

005377-005386-0029

11

© 2021