

Lloyd's Register of Shipping.

SURVEYS FOR FREEBOARD.

(CONDITIONS OF ASSIGNMENT.)

Index No. 39318
(For London Office only).

Ad 6929

21 OCT 1947

N.V. "SAN LEOPOLDO"

Ship's Name

"TRESUS" ex Laurel Hill.

Official Number

181766

Nationality and Port of Registry

British, London.

Port of Survey

Brakenhead.

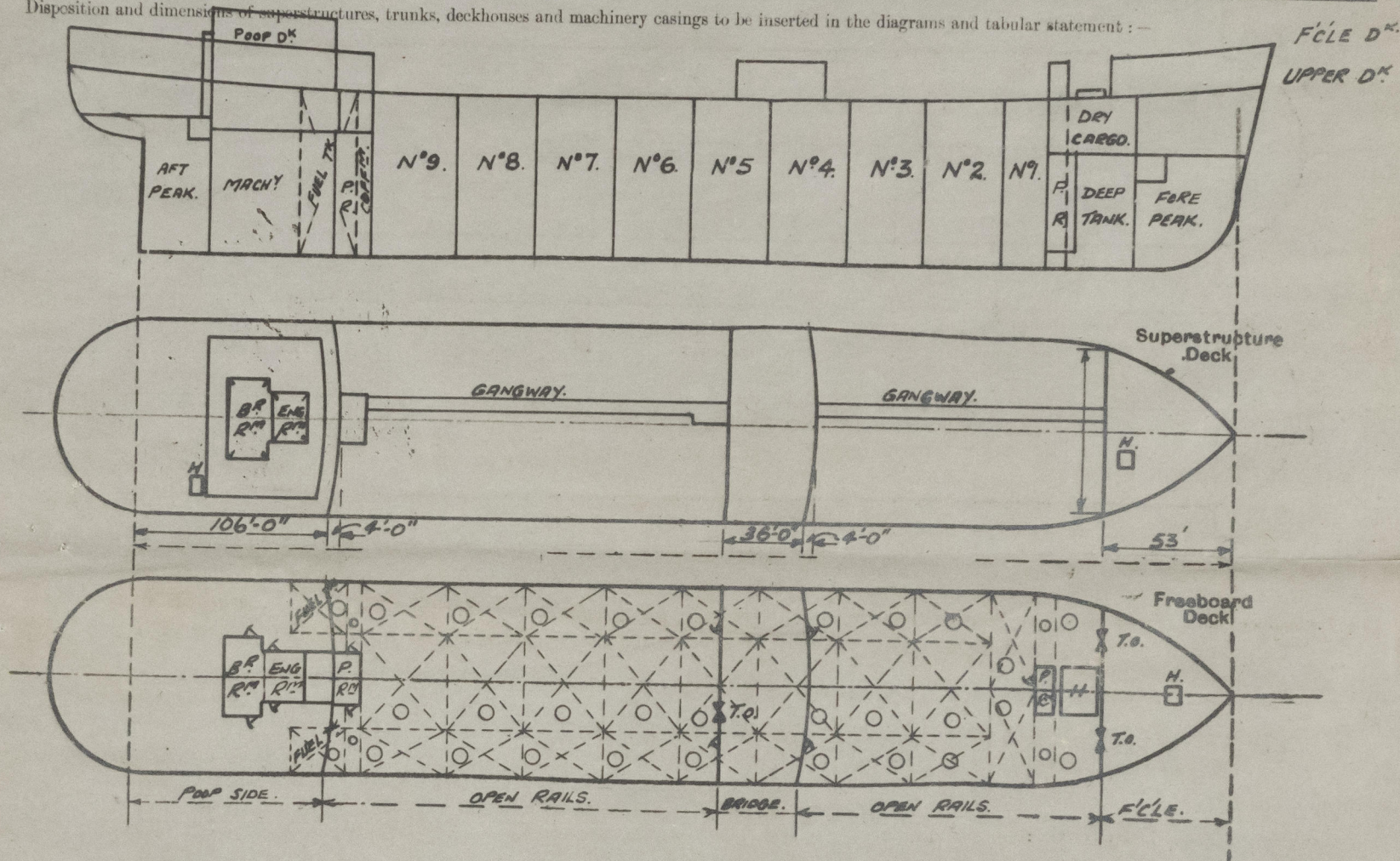
Surveyor's Signature

N. Lockhart.

Date of Survey

October 1947.

Disposition and dimensions of superstructures, trunks, deckhouses and machinery casings to be inserted in the diagrams and tabular statement:—



Particulars of Superstructures, Trunks, Casings, Deckhouses.

	Coaming	Plating	Stiffeners	Spacing	End Attachments of Stiffeners	Size of Openings	Height of Sills	Height of Casings
Poop Bulkhead		7/16"	9 x 4 x 1/2	30"	↑	5'-0" x 2'-4" (2)	18"	8'-0"
Bridge Quarter Deck Bulkhead ...					Mild steel			
Bridge, After Bulkhead		"	4 x 3 x 3/8	"	Seal	5'-6" x 3'-3" (2)	15"	8'-0"
Bridge, Forward Bulkhead		"	9 x 4 x 1/2	"	"	5'-3" x 2'-3" (2)	18"	"
Forecastle Bulkhead		"	4 x 3 x 3/8	"	Kathern	{ 1-4'-0" x 6'-0" 1-3'-3" x 5'-3"	15"	10'-0"
Trunk, Aft	None							
Trunk, Forward Pump Rm. Aft		"	9 x 4 x 3/8	"	↓	5'-0" x 2'-3" (2)	18"	8'-0"
Exposed Machinery Casings on Freeboard or Exposed Machinery Casings on Superstructure Decks	PR.	"	3 1/2 x 2 1/2 x 3/8	"		5'-0" x 2'-3" (1)	18"	8'-0"
Machinery Casings within Superstructures not fitted with Class I Closing Appliances	None							
Deckhouses on Flush Deck Ships ...	None							

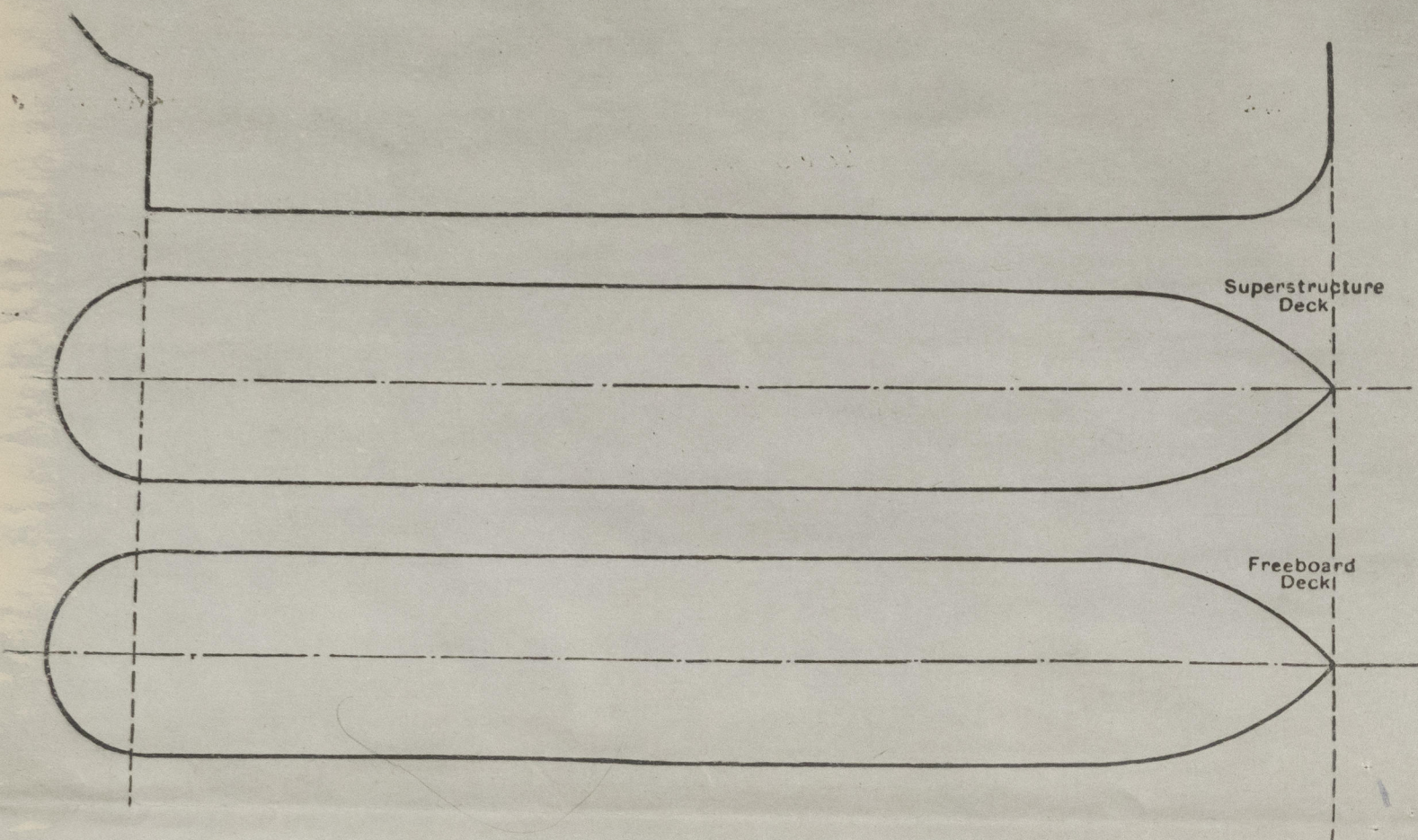
Stiffeners are flanged plates or angles welded to the on.

Particulars of Closing Appliances (state if capable of being manipulated from both sides).

Poop Bulkhead	Hinged steel W.T. Door (P.&S.) capable of being manipulated from both sides
Bridge Quarter Deck Bulkhead ...	
Bridge, After Bulkhead	Hinged steel W.T. doors capable of being manipulated from both sides.
Bridge, Forward Bulkhead	Portable steel plates secured by hook bolts.
Forecastle Bulkhead	Hinged steel W.T. doors capable of being manipulated from both sides.
Exposed Machinery Casings on Freeboard or Exposed Machinery Casings on Superstructure Decks	Hinged steel W.T. doors capable of being manipulated from both sides.
Machinery Casings within Superstructures not fitted with Class I Closing Appliances	Portable steel plates secured by hook bolts.
Deckhouses on Flush Deck Ships ...	Pump Rooms - 3 Hinged steel W.T. doors capable of being manipulated from both sides. (2 aft & 1 forward.)
	No openings.
	No openings

PARTICULARS OF PROTECTION TO OPENINGS, ETC.

The following diagrams should be used to indicate the positions of cargo and coaling hatchways, gangway, cargo and coaling ports, ventilators, companionways, etc., which would affect the seaworthiness of the ship:—



Particulars of fiddle, funnel and ventilator coamings, engine room skylight and other openings in machinery casing tops and their means of closing:—

Fiddle openings fitted with gratings and hinged steel flaps.

E.R. & B.R. ventilator and funnel coamings strongly constructed of steel.

E.R. & Pump Room skylights strongly constructed of steel.

Particulars of Flush Bunker Scuttles:—

*one on Poop Deck to rape locker
Bayonet fitting with chain attachment.*

Particulars of Companionways:— Pump Rooms - 3 Hinged steel W.T. doors, manipulated from both sides, openings 5'-0" x 2'-3" sill 18"
Poop Deckhouse - plating steel, openings in sides and ends 5'-0" x 2'-3", sills 15" x 18" (AFT) (SIDES)
with hinged steel W.T. doors manipulated from both sides.

Particulars of Ventilators in exposed positions on freeboard and superstructure decks:—

Forecastle Deck:— 1 @ 12" dia. 5'-0" high.
1 @ 12" " 3'-0" "

Upper Deck:— 2 @ 15" " 18'-0" "
1 @ 21" " 20'-0" "

Bridge Deck:— 4 @ 12" " 3'-0" "

Poop Deck:— 2 @ 15" " 13'-0" "
1 @ 12" " 3'-0" "

Efficient closing appliances provided for all ventilator coamings.

Coamings exceeding 36" in height suitably supported.

Particulars of Air Pipes in exposed positions on freeboard, raised quarter, or superstructure decks:—

Forecastle Deck:— 1 - 3 1/2" dia. 3'-6" high (stanch.) to fore peak.

Upper Deck:— { 2 - 4" " 3'-0" " to fore cofferdam.
2 - 3" " 3'-0" " " aft.
2 - 6" " 8'-0" " " Rape tanks.
2 - 6" " 8'-0" " " Oil fuel tanks } Stanch.
Poop Deck:— 1 - 4" " 1'-6" " " aft. Peak

Efficient closing appliances provided for all air escape pipes.

Particulars of Gangway Cargo and Coaling Ports:— None.

TRESUS.

Particulars of Scuppers and Sanitary Discharge Pipes:—

Scuppers and sanitary discharges from Poop accommodation led overboard below the freeboard deck and fitted with substantially constructed storm valves at ship's side.

Scuppers and sanitary discharges from Midship accommodation led overboard above the freeboard deck and fitted with substantially constructed storm valves at ship's sides.

Particulars of Side Scuttles:—

Poop Tween Decks:— side scuttles of strong construction fitted with hinged deadlights permanently attached.

Vertical distance of Sill of lowest Side Scuttle above top of keel

none below freeboard deck.

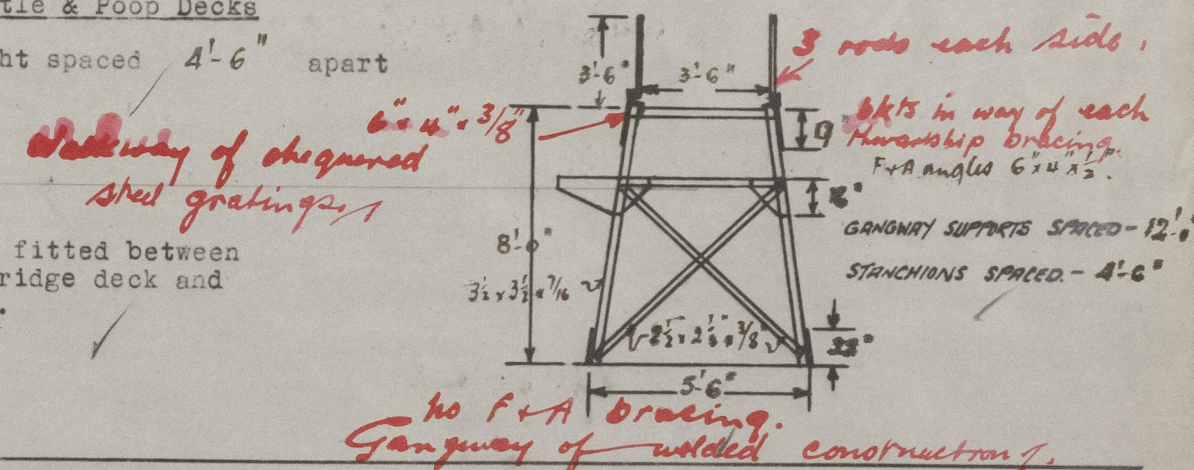
Particulars of Guard Rails:—

At sides of Upper, Forecastle & Poop Decks

Stanchions 3'-6" in height spaced 4'-6" apart and fitted with 3 rails

Particulars of Gangways, Lifelines, etc.:—

Fore and aft gangway fitted between the forecastle and bridge deck and bridge and poop deck.



Particulars of Freeing Arrangements.

	Length of Bulwark	Height of Bulwark	Size of Freeing Ports	Number each side	Area each side	Rule area each side
After Well ...						
Forward Well ...						

State position of each freeing port ... (After Well:—

(F. and A. position and height above deck edge) (Forward Well:—

State whether the freeing ports are fitted with shutters, bars, or rails, and give particulars of such:—

Additional area where sheer is less than standard.



© 2020

Lloyd's Register Foundation

PARTICULARS OF PROTECTION TO OPENINGS, ETC.

		HATCHWAYS ON FREEBOARD AND SUPERSTRUCTURE DECK							STR. OTHER SMALL HATCHES
		FREEBOARD DECK				DECK			
Description of Hatchway		TO F.P. STORE	TO CARGO HOLD	TO OIL TANKS	TO FORE & AFT.	TO C/O'S FORWARD	TO DEEPTO C.F. TANK BUNKERS	TO STEWARD'S STORE	ON F.P. DIS. TO FOLE SPACE
Dimensions of Hatchway		3'-0" x 3'-0"	11'-3" x 15'-0"	48" DIA.	24" DIA.	24" DIA.	30" DIA.		2'-3" x 2'-3"
COAMINGS	Height above Deck	30"	33"	30"	24"	30"	30"		36"
	Thickness	.50"	.50"	.50"	.62"	.62"	.50"		.50"
	Stiffeners	FLATS.	FLATS	-	FLATS	FLATS.	FLATS.		-
	Brackets, Stays	-	4' APART.	-	-	-	-		-
HATCH BEAMS	Number								
	Spacing								
FORE AND AFTERS	Number								
	Spacing								
HATCH COVERS	Material	STEEL W.T.	STEEL W.T.	STEEL W.T.	STEEL W.T.	STEEL W.T.	STEEL W.T.	STEEL W.T.	STEEL W.T.
	Thickness								
How fitted		Secured by efficient toggles							
Bearing Surface									
Spacing of Cleats		-	-	-	-	-	-	-	-
Number of Tarpaulins		-	-	-	-	-	-	-	-

*Are wood fore and afters steel shod at all bearing surfaces? -

Are battens and wedges efficient and in good condition? -

Are tarpaulins in good condition and in accordance with rule requirements? -

Are lashings provided in accordance with rule requirements? -

Particulars of any special features:-

All cargo oil tank hatch covers fitted with ullage doors 10" diameter of strong construction secured by strongbacks.

The freeboards marked on the vessel's sides are:-

Tropical Fresh water 15 3/4" above disc. -
 Tropical. 7 1/2" " " -
 Fresh water 8 1/4" " " -
 Summer. 9' 2 3/4" from 1/2 of steel upper deck at sides. -
 Winter. 7 1/2" below disc. -
 Winter North Atlantic. 12 1/2" " " -

Endorsement at first survey and at surveys for renewal of Certificate:-

The fittings and appliances are in accordance with the particulars shown on this form (or as now modified) and are in good condition.



© 2020

Lloyd's Register Foundation