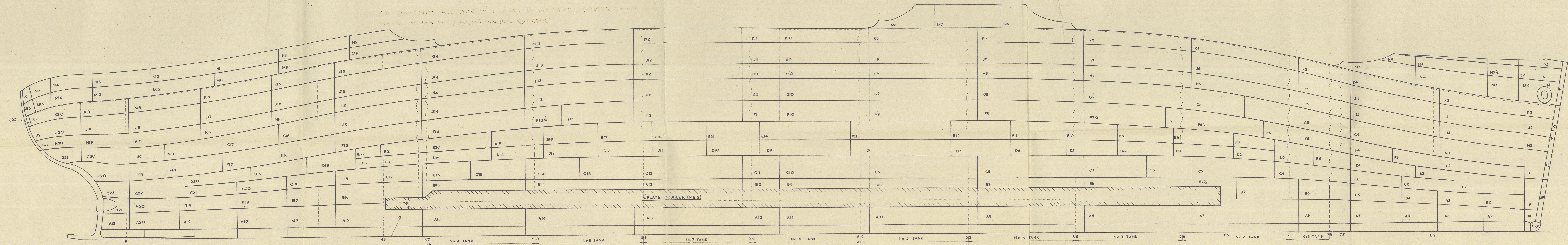
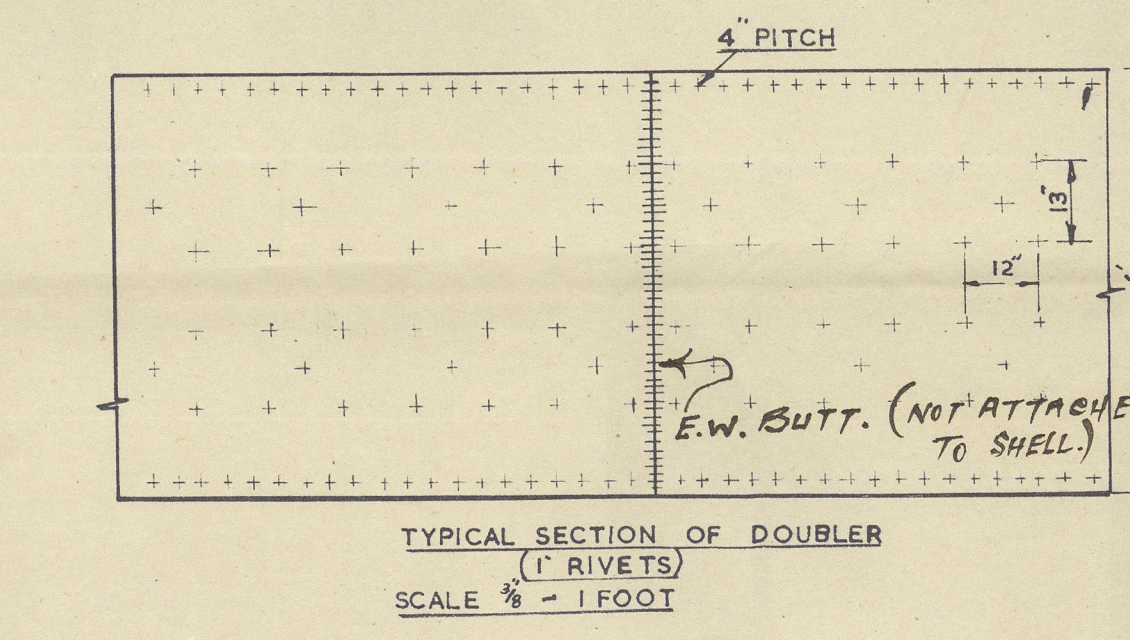


RPT. NO. LIV. 135151.

T.E.S. SAN LEONARDO.

SHELL EXPANSION

SHOWING DOUBLER FITTED JULY '52



REDUCED IN WAY OF PUMP ROOM SECTION DOUBLER.
N.B. END PLATES - 625' THICK ON ACCOUNT OF MATERIAL SHORTAGE OF .75 PLATE