

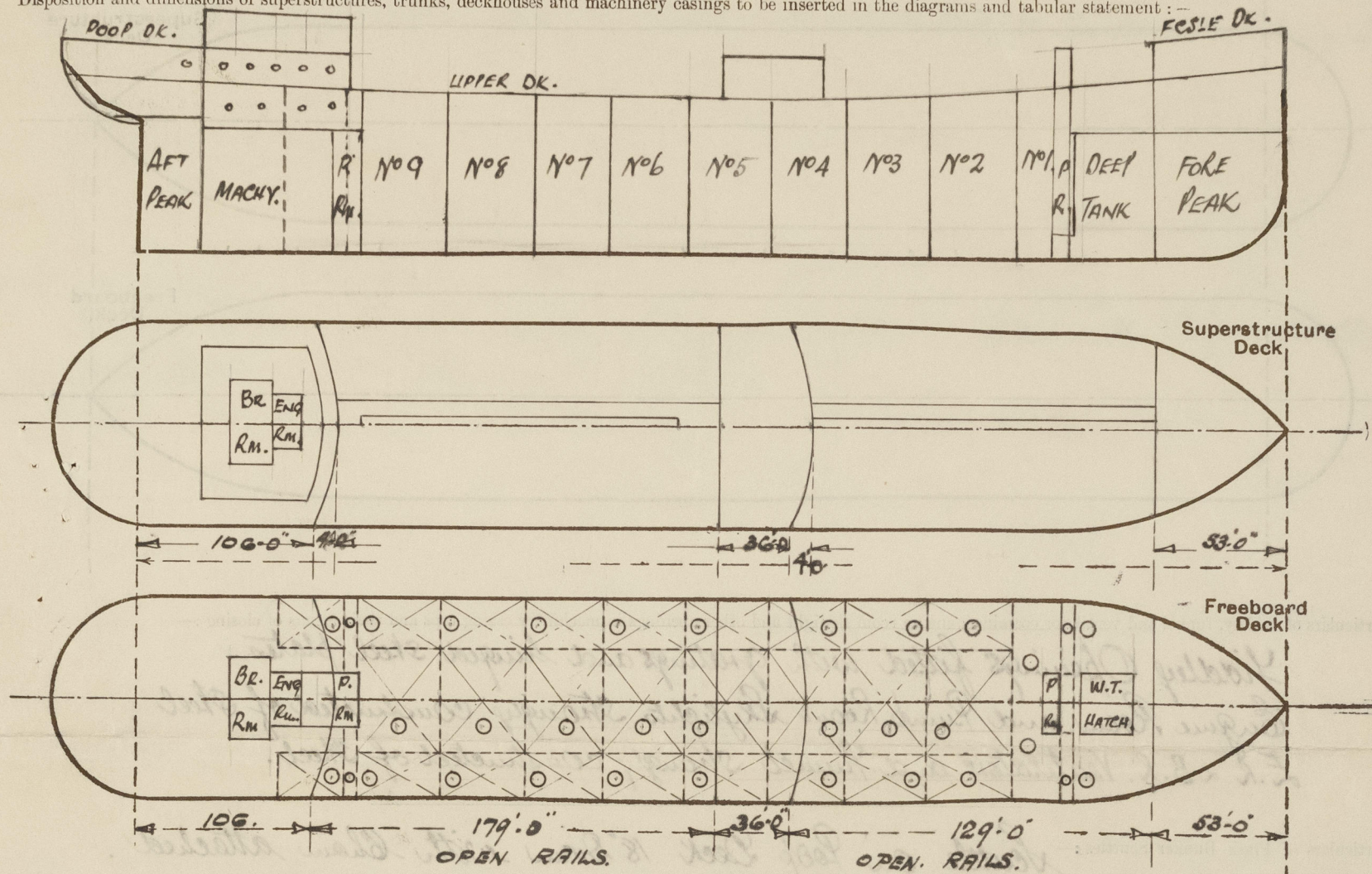
# Lloyd's Register of Shipping.

## SURVEYS FOR FREEBOARD.

### (CONDITIONS OF ASSIGNMENT.)

Ship's Name *TURBINELLUS.*Port of Survey *GLASGOW.*Official Number *NOT YET 184767*Surveyor's Signature *George Sutherland.*Nationality and Port of Registry *BRITISH. LONDON*Date of Survey *16<sup>TH</sup> OCTOBER. 1947.*

Disposition and dimensions of superstructures, trunks, deckhouses and machinery casings to be inserted in the diagrams and tabular statement:—



Particulars of Superstructures, Trunks, Casings, Deckhouses.

	Coaming	Plating	Stiffeners	Spacing	End Attachments of Stiffeners	Size of Openings	Height of Sills	Height of Casings
Poop Bulkhead ...	✓	44"	TOE ON. 3 1/2" x 2 1/2" x .25	30"	WELDED TOP NONE F. BOTTOM.	1 P.S. 5'-0" x 2'-4"	1'-6"	8'-0"
Raised Quarter Deck Bulkhead ...			9" x 4" fl. p.l.s. in way of P.R. 10" x 3 1/2" " " at sides.					
Bridge, After Bulkhead ...	✓	38	TOE ON. 4" x 3" x .25	30"	WELDED TO F.A. OVER. 1 P.S. 5'-0" x 2'-4"	1 ON 5'-1 1/2" x 4'-1 1/2"	1'-6"	8'-0"
Bridge, Forward Bulkhead ...	✓	44	9" x 4" x 3/8"	30"	WELDED TO F.A. OVER. WELDED TO DK.	1 P.S. 5'-0" x 2'-4"	1'-6"	8'-0"
Forecastle Bulkhead ...	✓	32	TOE ON. 4" x 3" x 3/8"	30"	WELDED TO F.A. OVER WITH BKT CONNECTION.	1 P.S. 5'-0" x 2'-4"	1'-6"	10'-0"
Trunk, Aft ...								
Trunk, Forward ...								
Exposed Machinery Casings on Freeboard or Raised Quarter Decks ...								
Exposed Machinery Casings on Superstructure Decks ...								
Machinery Casings within Superstructures not fitted with Class I Closing Appliances ...	✓	44	9" x 4" x 3/8"	30"	WELDED TOP AND BOTTOM.	1 P.S. 5'-0" x 2'-2"	1'-6"	8'-0"
PUMP RM. AFT								
Deckhouses on Flush Deck Ships ...								

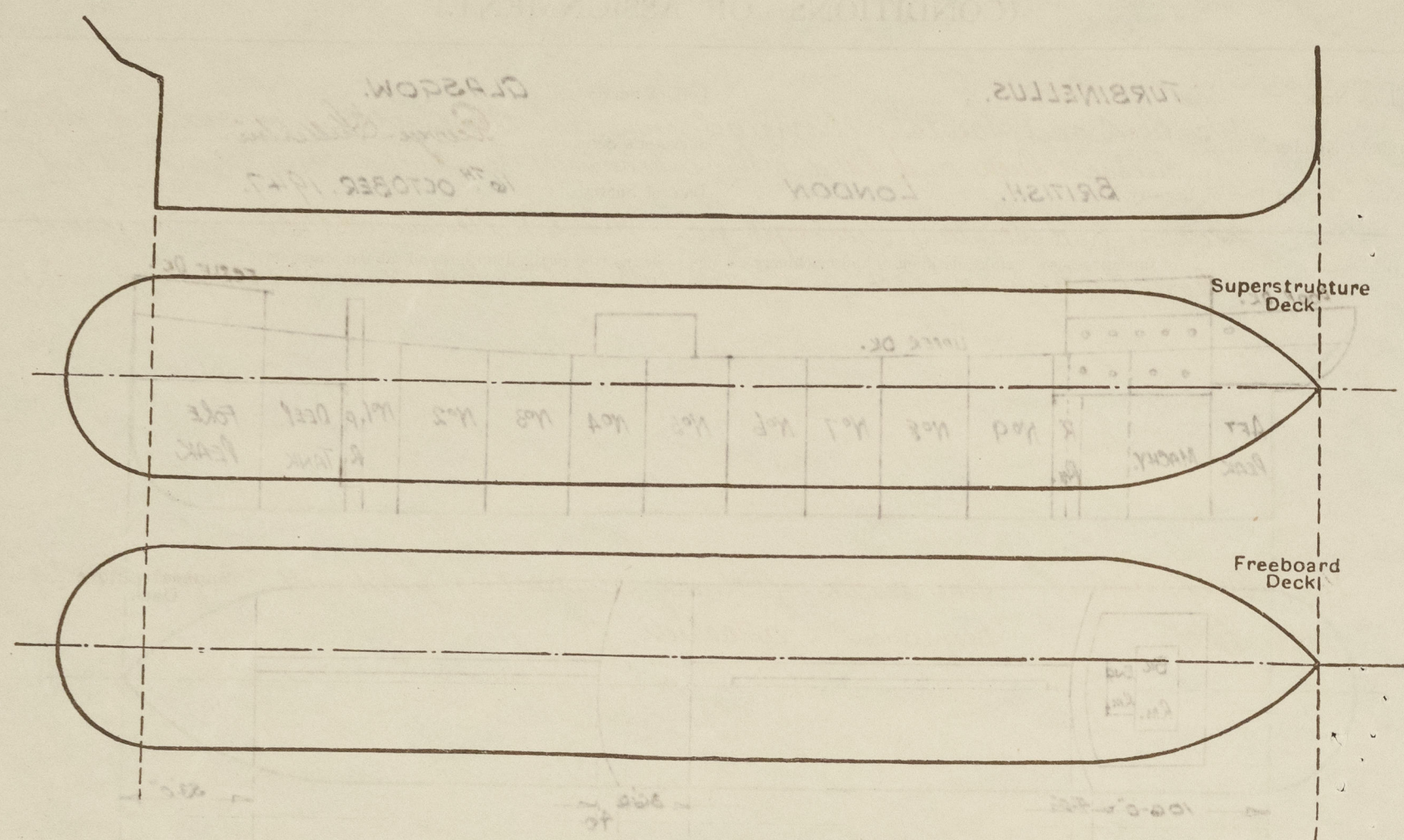
Particulars of Closing Appliances (state if capable of being manipulated from both sides).

Poop Bulkhead ...	Hinged w/T Door P.S. Capable of being operated from both sides ✓
Raised Quarter Deck Bulkhead ...	
Bridge, After Bulkhead ...	Opening Port & Starboard and Centre line closed by steel Portable Plates ✓
Bridge, Forward Bulkhead ...	Hinged w/T Door P.S. Capable of being operated both sides. ✓
Forecastle Bulkhead ...	Opening Port & Starboard closed by steel Portable Plates. ✓
Exposed Machinery Casings on Freeboard or Raised Quarter Decks ...	
Exposed Machinery Casings on Superstructure Decks ...	
Machinery Casings within Superstructures not fitted with Class I Closing Appliances ...	Hinged w/T Door P.S. Capable of being operated from both sides ✓
PUMP RMs.	
Deckhouses on Flush Deck Ships ...	



# PARTICULARS OF PROTECTION TO OPENINGS, ETC.

The following diagrams should be used to indicate the positions of cargo and coaling hatchways, gangway, cargo and coaling ports, ventilators, companionways, etc., which would affect the seaworthiness of the ship:—



Particulars of fiddle, funnel and ventilator coamings, engine room skylight and other openings in machinery casing tops and their means of closing:—

Fiddle Openings fitted with gratings and hinged steel plates.  
Engine Room and Pump Room Skylights Strongly constructed of Steel.  
F.R. & B.R. Ventilators and Funnel Strongly constructed of Steel.

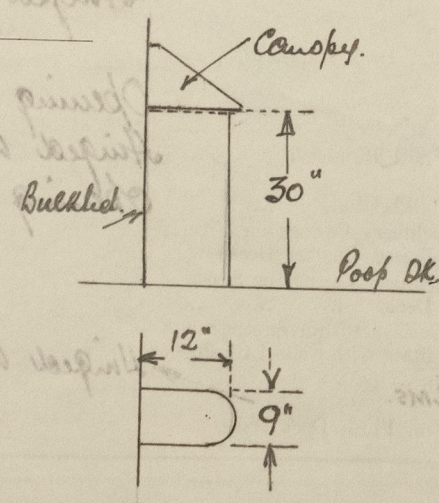
Particulars of Flush Bunker Scuttles:— Scuttle on Poop Deck 18" diam with Chain attached of strong construction (iron) with bayonet jointing.

Particulars of Companionways:— Pump Room:— Hinged steel w/ doors.  
Poop Deckhouse:— Steel Plate Openings in Sides and Ends, Hinged steel w/ doors.

Particulars of Ventilators in exposed positions on freeboard and superstructure decks:—  
Forecastle Deck:— 1 Vent. 12" Dia. 2'-8" High x 3/8" THK. to Fore Peak.  
Forecastle Aft 1 " 12" " 5'-0" " x 3/8" " to Peak Store fitted with stays.  
Upper Deck forward 1 " P.S. 17" " 13'-0" " x 3/8" " to Cargo Hatch attached to Forecastle Dt.  
" " aft 1 " P.S. 15" " 3'-0" " x 3/8" " to Pump Room.  
" " 1 " P.S. 18" " 24'-0" (overex posts) to Pump Room.  
" " 1 " P. 22" " 12'-0" (MECHANICAL FAN) in Pump Room attached to Pump Room Top.  
Poop Deck 1 " 10" Dia. 2'-10" High x 3/8" THK. to Store.  
" " 1 " P.S. 18" " 13'-0" High x 3/8" THK. to Steering Gear Comp. Stayed to Casing.

Closing appliances on all Vents:— Hinged steel water-tight covers secured by Butterfly Nuts.

Particulars of Air Pipes in exposed positions on freeboard, raised quarter, or superstructure decks:—  
Forecastle Deck 1 @ 4" Dia. 25" High to Fore Peak.  
" " 2 @ 2" Dia. 25" High.  
Upper Deck forward 2 @ 6" Dia. 6'-6" High to Deep Tank.  
" " 2 @ 2" Dia. 3'-10 1/2" High to Lower Cofferdam.  
" " aft 2 @ 3" Dia. 2'-0" High to Aft Cofferdam.  
" " 2 @ 6" Dia. 4'-7" High to Bunkers.  
Poop Deck 1 @ 3 1/2" Dia. 12" High to Aft Peak.  
" " See Sketch to Crew Lavatory.  
All air pipes fitted with self-closing valves at mouth of pipes.



Particulars of Gangway Cargo and Coaling Ports:—

Turbineller.

Particulars of Scuppers and Sanitary Discharge Pipes:—

Scuppers and Sanitary discharges from Poop Accommodation led overboard below the Freeboard Deck and fitted with substantially constructed storm valves on ship's side.  
Scuppers and Sanitary discharges from Midship Accommodation led overboard above the Freeboard Deck and fitted with substantially constructed storm valves on ship's side.

Particulars of Side Scuttles:—

Poop Deck and upper Deck.

Side scuttles of strong construction fitted with hinged deadlights permanently attached.

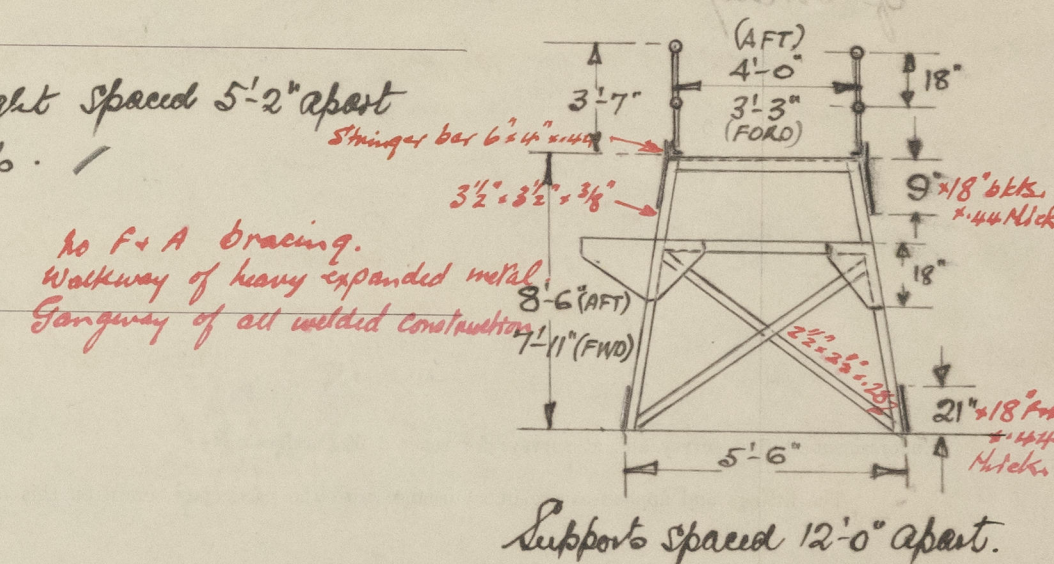
(No glasses at present in side scuttles. Glasses have been ordered. will be fitted at the first opportunity.)

Vertical distance of Sill of lowest Side Scuttle above top of keel.

Particulars of Guard Rails:—

Stanchions 3'-7" in height spaced 5'-2" apart fitted with four rails.

Particulars of Gangways, Lifelines, etc.:—



## Particulars of Freeing Arrangements.

	Length of Bulwark	Height of Bulwark	Size of Freeing Ports	Number each side	Area each side	Rule area each side
After Well ...			Open Rails.			
Forward Well ...						

State position of each freeing port ... { After Well:—

(F. and A. position and height above deck edge) { Forward Well:—

State whether the freeing ports are fitted with shutters, bars, or rails, and give particulars of such:—

Additional area where sheer is less than standard.



# PARTICULARS OF PROTECTION TO OPENINGS, ETC.

HATCHWAYS ON FREEBOARD AND SUPERSTRUCTURE DECKS.									
FREEBOARD DECK.									
Description of Hatchway	IN FEELS	CARGO HOLD.	CARGO TANKS.	OIL FUEL BUNKERS.	DEEP TANK FORD.	COFFERDAM. FORD & AFT.			
Dimensions of Hatchway	3'-0" x 3'-0"	11'-4" x 15'-0"	48" DIA.	31" DIA.	25" DIA.	25" DIA.			
COAMINGS	Height above Deck	30"	32"	32"	31"	24"	24"		
	Thickness	38"	50"	50"	50"	40"	40"		
	Stiffeners		4" x 3/8"						
	Brackets, Stays		2 AT ENDS 3 AT SIDES.						
HATCH BEAMS	Number								
	Spacing								
FORE AND AFTERS	Number								
	Spacing								
HATCH COVERS	Material	STEEL	STEEL	STEEL	STEEL	STEEL	STEEL		
	Thickness	1/2"	1/2"	1/2"	1/2"	1/2"	1/2"		
HATCH COVERS	How fitted	Hinged	Toggles.	Hinged	Hinged	Hinged	Hinged		
	Bearing Surface	W.T. made N.T.	W.T. made N.T.	W.T. made N.T.	W.T. made N.T.	W.T. made N.T.	W.T. made N.T.		
Spacing of Cleats		Toggles spaced 18"	Toggles spaced 20" apart.	Toggles spaced 18"	Toggles spaced 18"	Toggles spaced 18"	Toggles spaced 18"		
Number of Tarpaulins									

\*Are wood fore and afters steel shod at all bearing surfaces?  
 Are battens and wedges efficient and in good condition?  
 Are tarpaulins in good condition and in accordance with rule requirements?  
 Are lashings provided in accordance with rule requirements?

Particulars of any special features:—

All Cargo Tanks, Hatch Covers fitted with Ullage Doors 10" Dia of Strong Construction and Secured with Strongbacks.  
 5" x 4" x 1/2" steel cover to cargo hold has 5 stiffeners 6" x 4" x 1/2" welded to cover fitted F & A, with 2- 5" x 3/8" flat irons, fitted intercostally athwartship.

Endorsement at first survey and at surveys for renewal of Certificate:—

The fittings and appliances are in accordance with the particulars shown on this form (or as now modified) and are in good condition.



© 2020

Lloyd's Register Foundation