

Nº 1483.

RUDDER PLAN.

SCALE $\frac{1}{2}'' = 1 \text{ FOOT}$.

RUDDER FRAME & UPPER STOCK TO BE OF FORGED STEEL.
TO PASS LLOYD'S TESTS & 100 A1.

AREA OF RUDDER ABAFT & OF PINTLES = 174.8 SQ. FT.
CG " " " " " = 5.14 FT.

A x D = 900, SPEED = 14 $\frac{3}{4}$ KNOTS

LLOYD'S RUDDERHEAD = 13 $\frac{3}{4}$ "

" ALLOWANCE FOR FORD PORTION = $\frac{1}{2}$ "

13 $\frac{1}{4}$ "

OWNERS REQUIREMENTS = $\frac{5}{8}$ "

RUDDERHEAD DIA = 13 $\frac{7}{8}$ "

NOTES:- DIMENSIONS ON THIS PLAN TO BE CAREFULLY WORKED AND NOT EXCEEDED UNLESS OTHERWISE AGREED AS ANY EXCESS OVER CALCULATED WEIGHT WILL NOT BE PAID FOR.
CORRECT POSITION OF RUDDER GUDGEONS TO BE TEMPLATED FROM STERNPOST CENTRE LINE OF UPPER STOCK. GUDGEONS & PINTLES TO BE IN A PERFECTLY STRAIGHT LINE SQUARE TO BASE.
COUPLING BOLT HEADS TO BE $\frac{1}{4}$ " CLEAR OF COUPLING WHEN SCREWED UP TIGHT. THREADS OF COUPLING BOLTS TO BE WAVE SHAPED, THUS COUPLING KEY TO BE SECURED IN POSITION WITH STEEL STRAP TAPPED TO FLANGES OF COUPLING, STRAP FITTED BY SHIPBUILDERS.
ALL RIVET HOLES TO BE DRILLED MAKERS.

RUDDER FRAME NOT TO BE PAINTED BUT TO BE GIVEN A COAT OF OIL BEFORE DESPATCH.

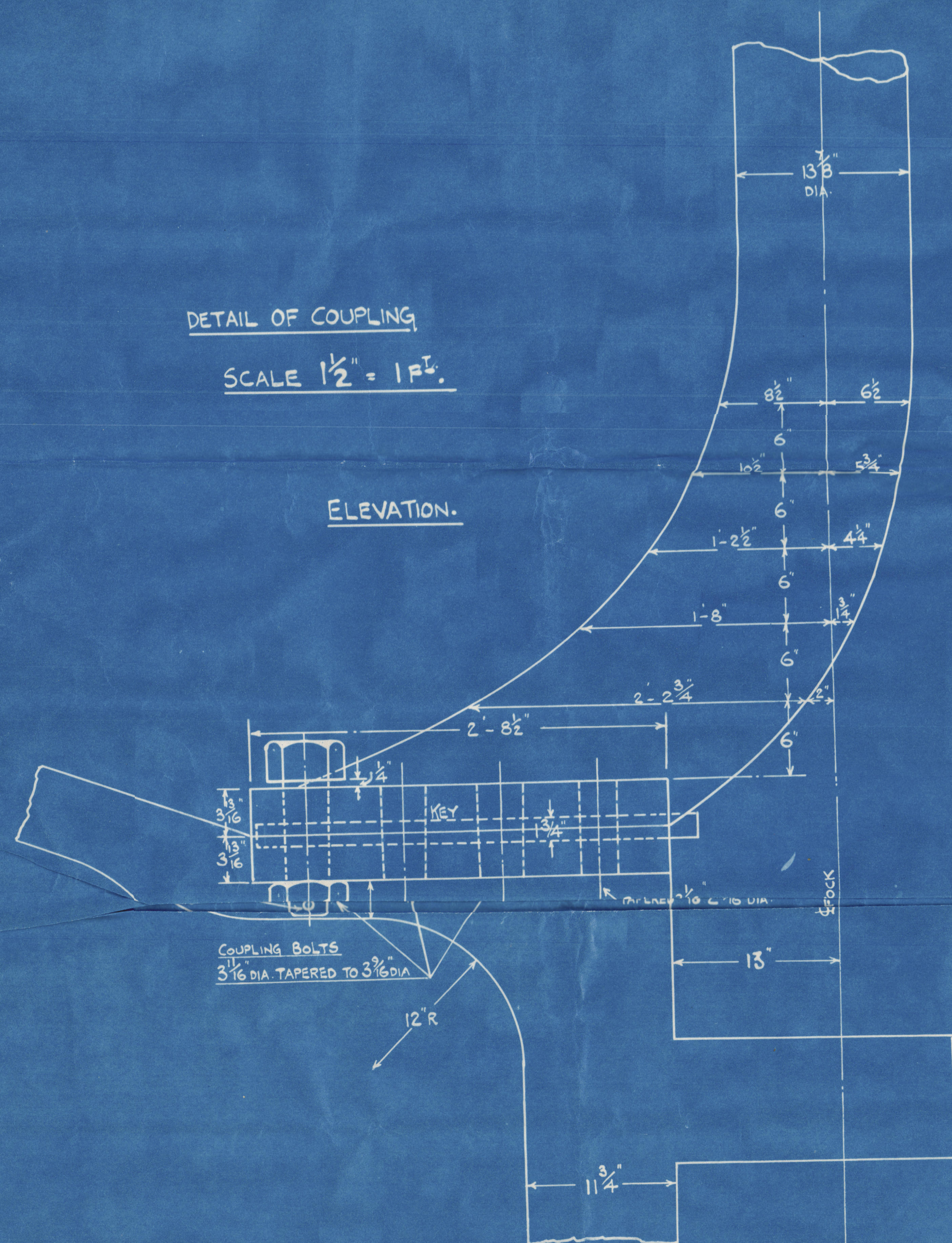
WEIGHT TO BE PAINTED ON BEFORE DESPATCH.

See also plan of amendment to rudder

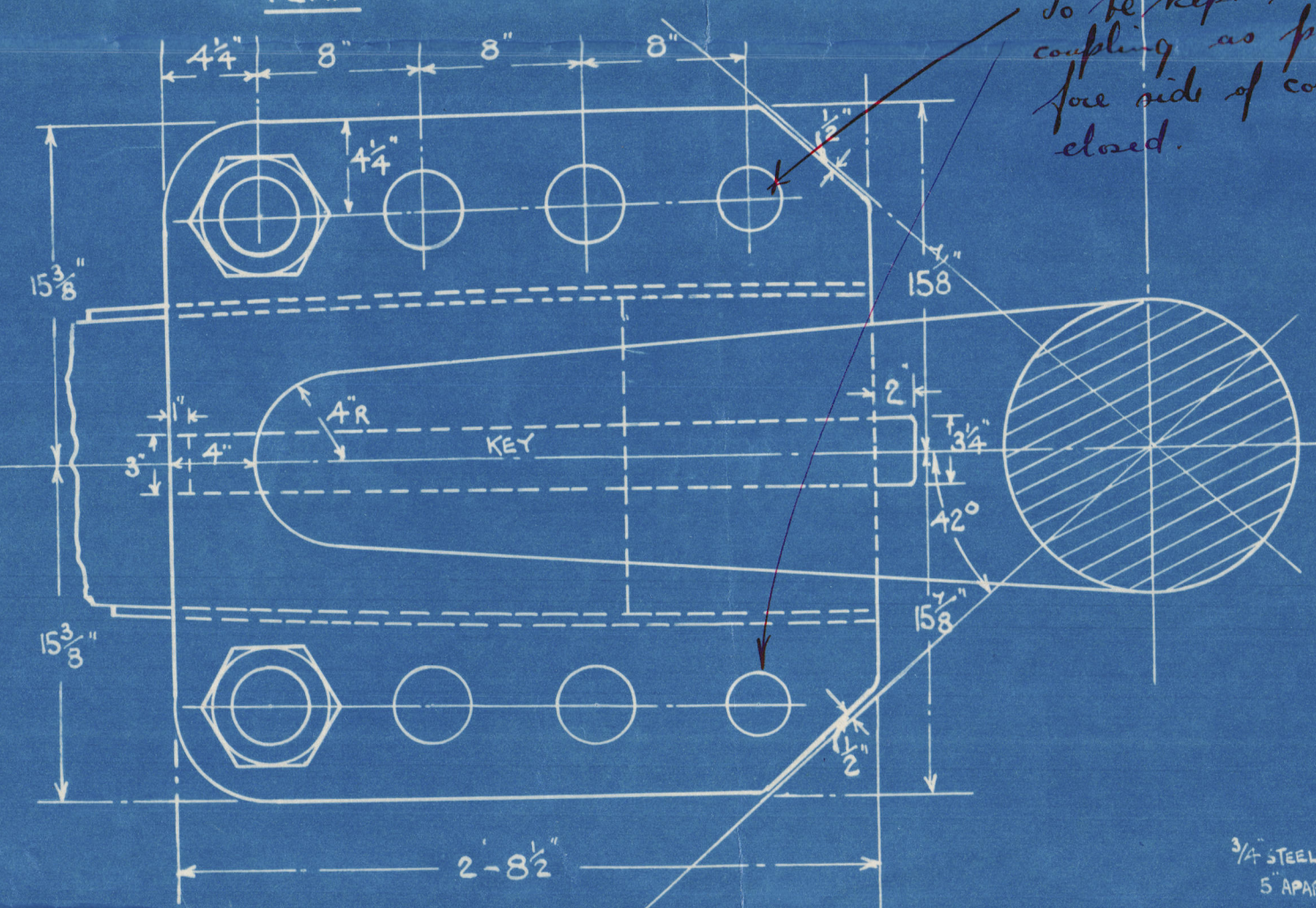
DETAIL OF COUPLING

SCALE $\frac{1}{2}'' = 1 \text{ FT.}$

ELEVATION.

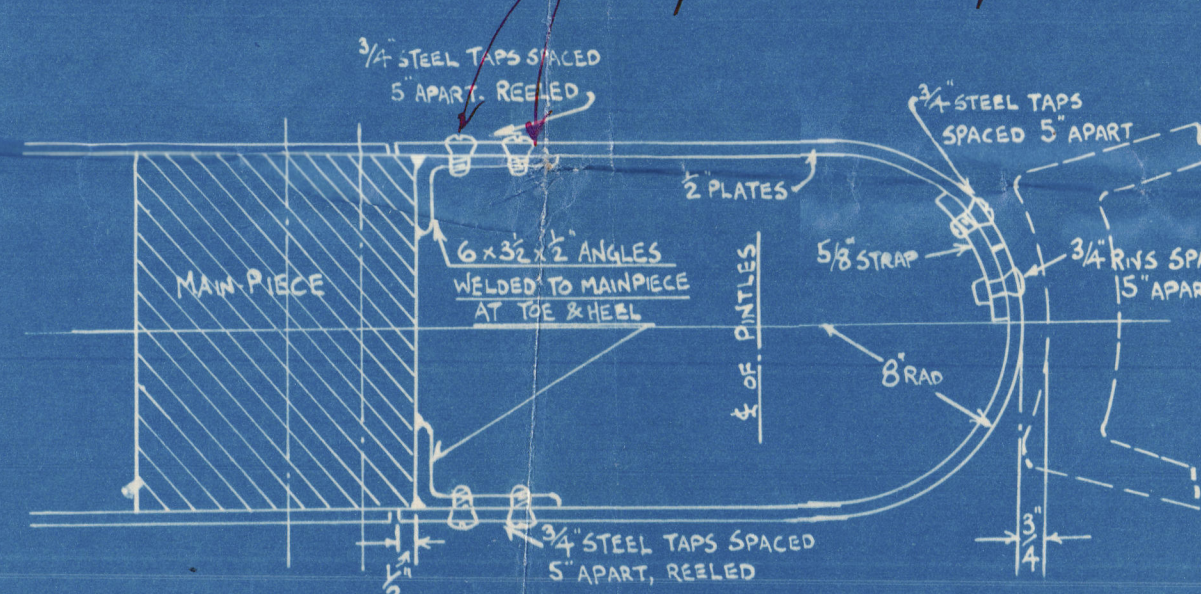


PLAN



to be kept as close to centre of coupling as practicable to ensure for rule of coupling being properly closed.

Arrangement to be made to prevent rudder from slackening back.

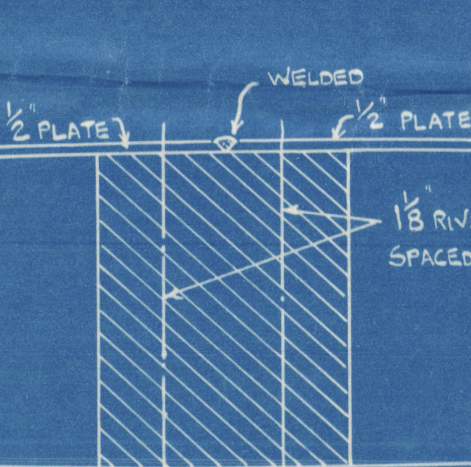


METHOD OF FITTING PORTABLE FILLING IN PLATES

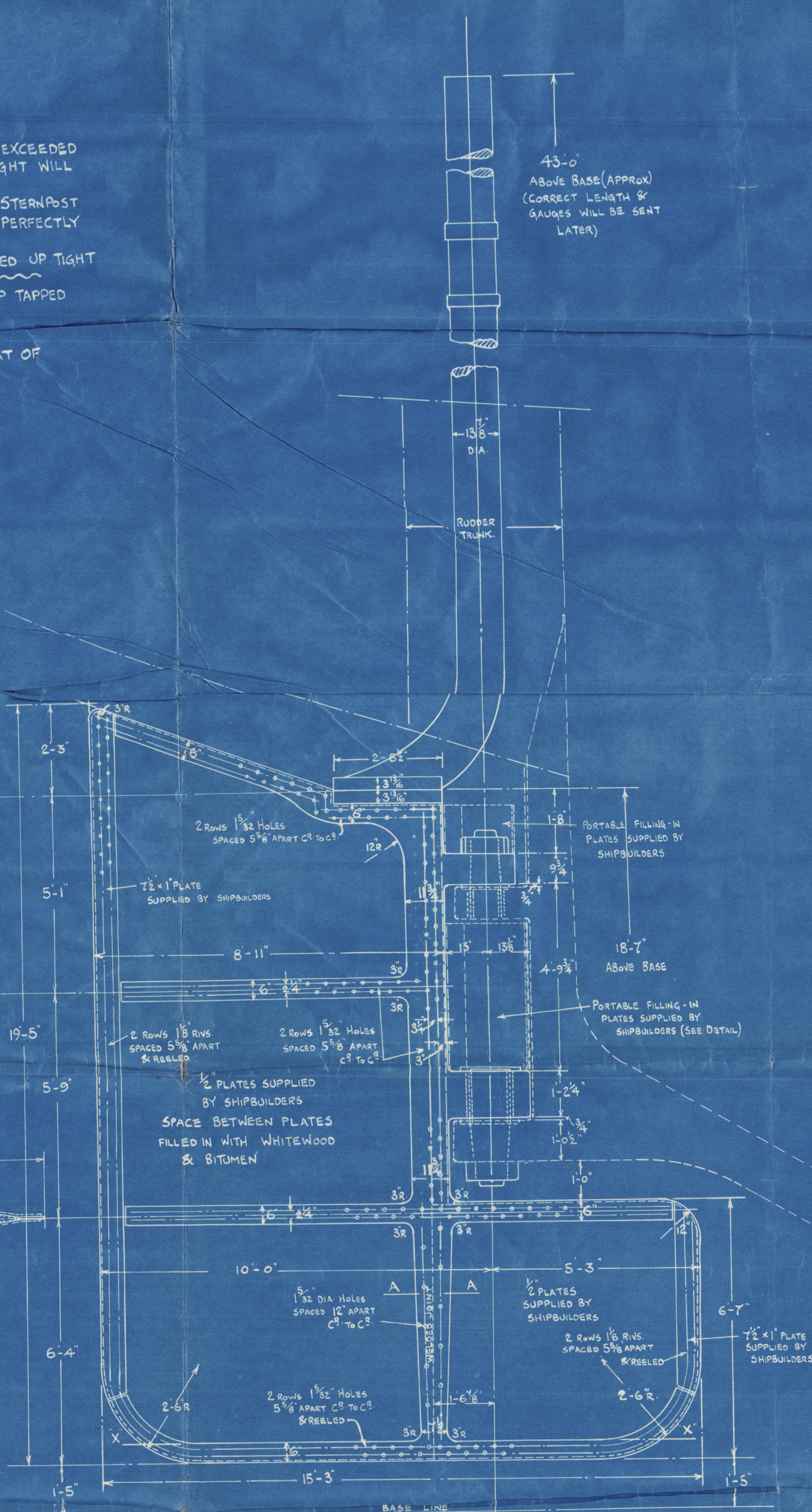
SCALE $\frac{1}{2}'' = 1 \text{ FT.}$

SECTION THROUGH FORD AND AFTER EDGES OF RUDDER.

SCALE $\frac{1}{2}'' = 1 \text{ FT.}$

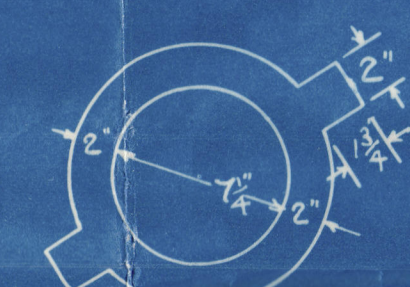


SECTION THRO LOWER MAINPIECE AT A.A.



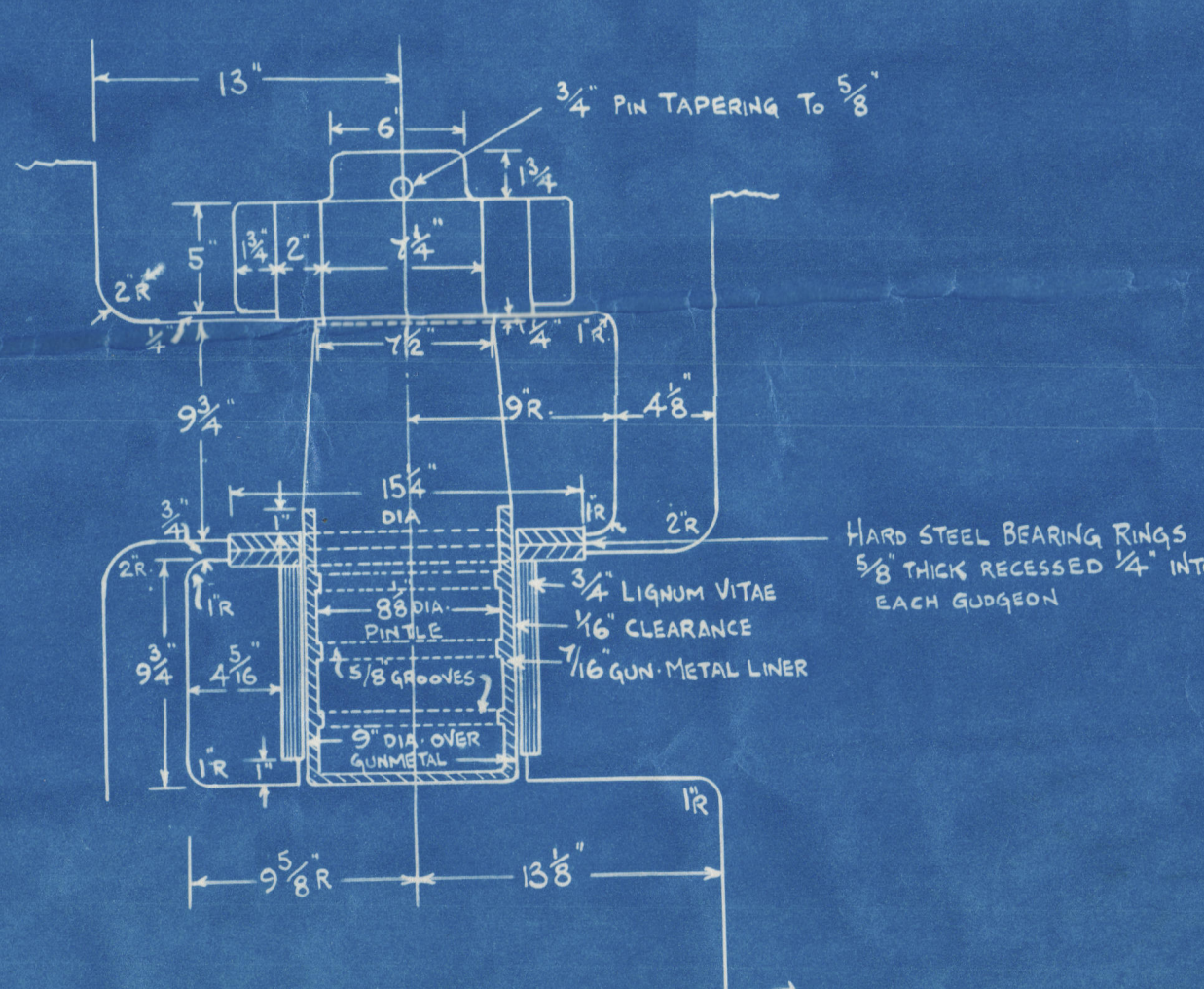
SECTION THRO 'X'.

DETAIL OF PINTLE NUT.



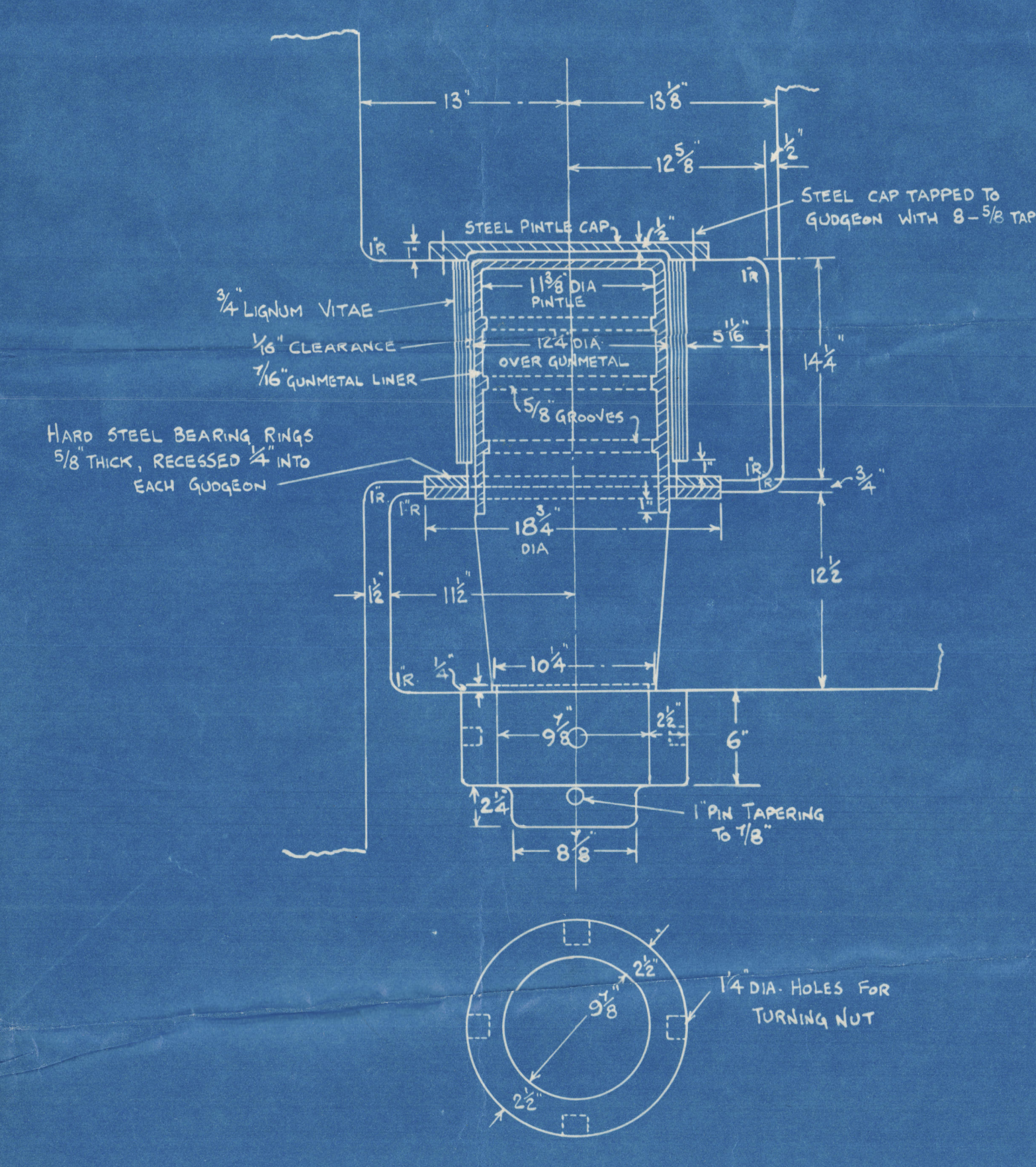
DETAIL OF TOP PINTLE.

SCALE $\frac{1}{2}'' = 1 \text{ FT.}$



DETAIL OF BOTTOM PINTLE.

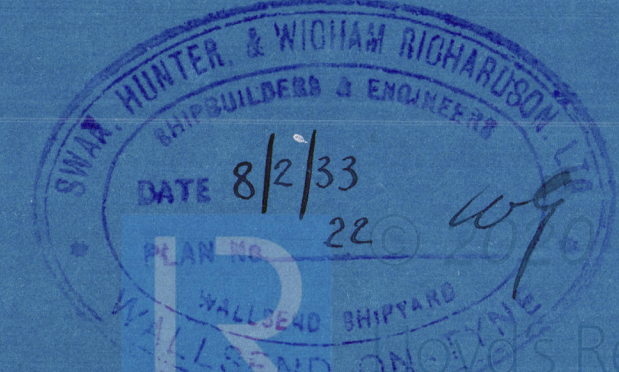
SCALE $\frac{1}{2}'' = 1 \text{ FT.}$



DETAIL OF PINTLE NUT



RECEIVED AT WILSON'S LETTER OF 8/2/33



1483.

Ruddell

Lloyd's Approved

005353-005357-0002



© 2020

Lloyd's Register
Foundation

922

(14)

Swan Hunters No 14 83

Rudder

ss "PORT GHALMERS"
NEWCASTLE ON TYNE.

Report No. 90866.



© 2020

Lloyd's Register
Foundation

005353-005320-0002