

18 DEC 1927

S.S. No. 837 M.

# RUDDER AND STERNFRAME.

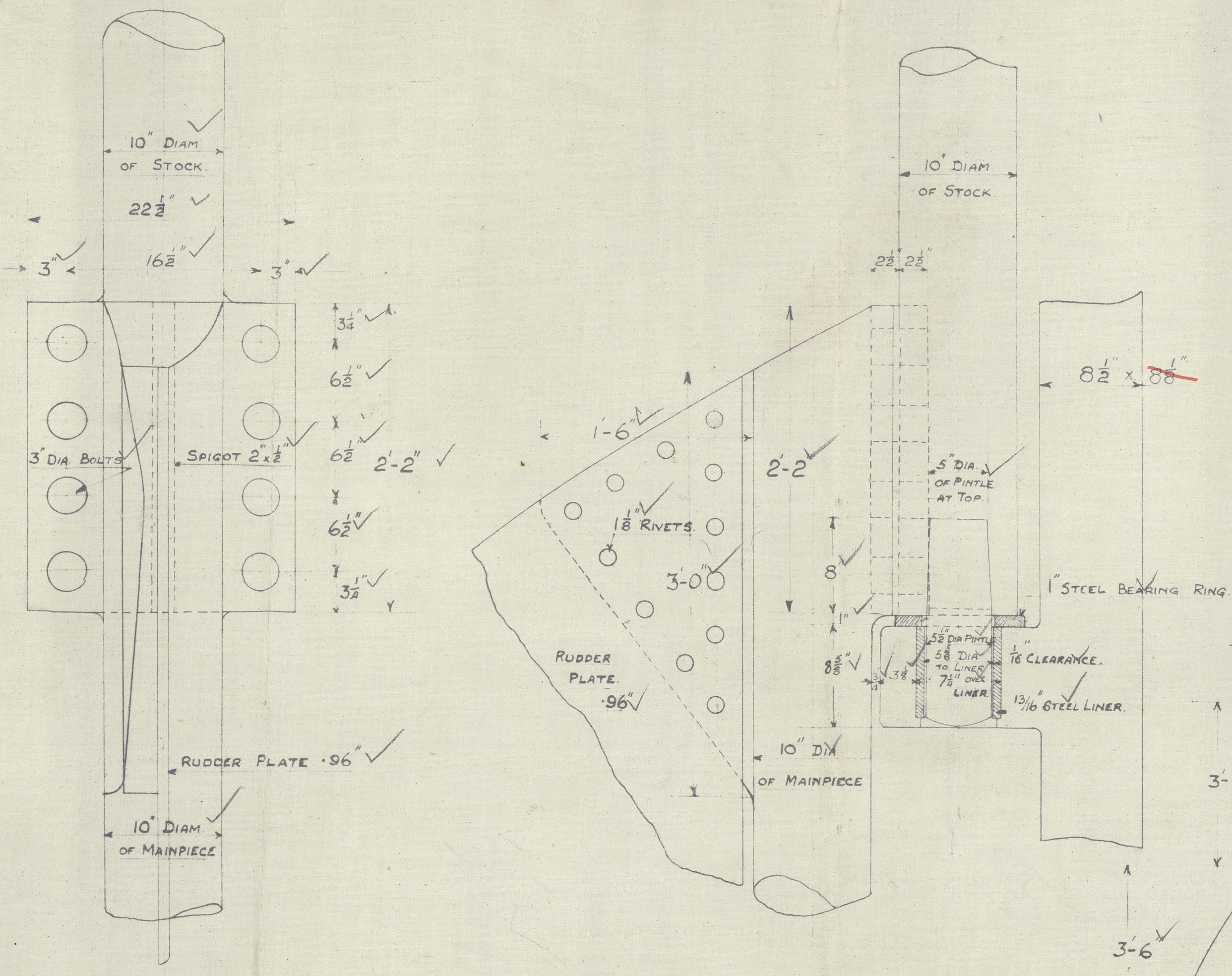
SCALES:  $\frac{1}{2}$ " = 1 FOOT AND AS INDICATED.

RUDDER AND STERNFRAME — FORGING.  
AREA OF RUDDER ABAFT C<sup>d</sup> LINE OF PINTLES 138.15 SQ. FT. ✓  
CR. OF GRAVITY OF AREA ABAFT C<sup>d</sup> LINE OF PINTLES 3.4 FT. ✓  
SPEED 11 KNOTS ✓  
RIVET HOLES IN PLATE AND ARMS TO BE COUNTERSUNK AND TO HAVE FULL HEADS AND POINTS. ALL HOLES IN ARMS AND FRAME TO BE  $\frac{1}{16}$  LARGER THAN DIA. OF RIVETS. ✓



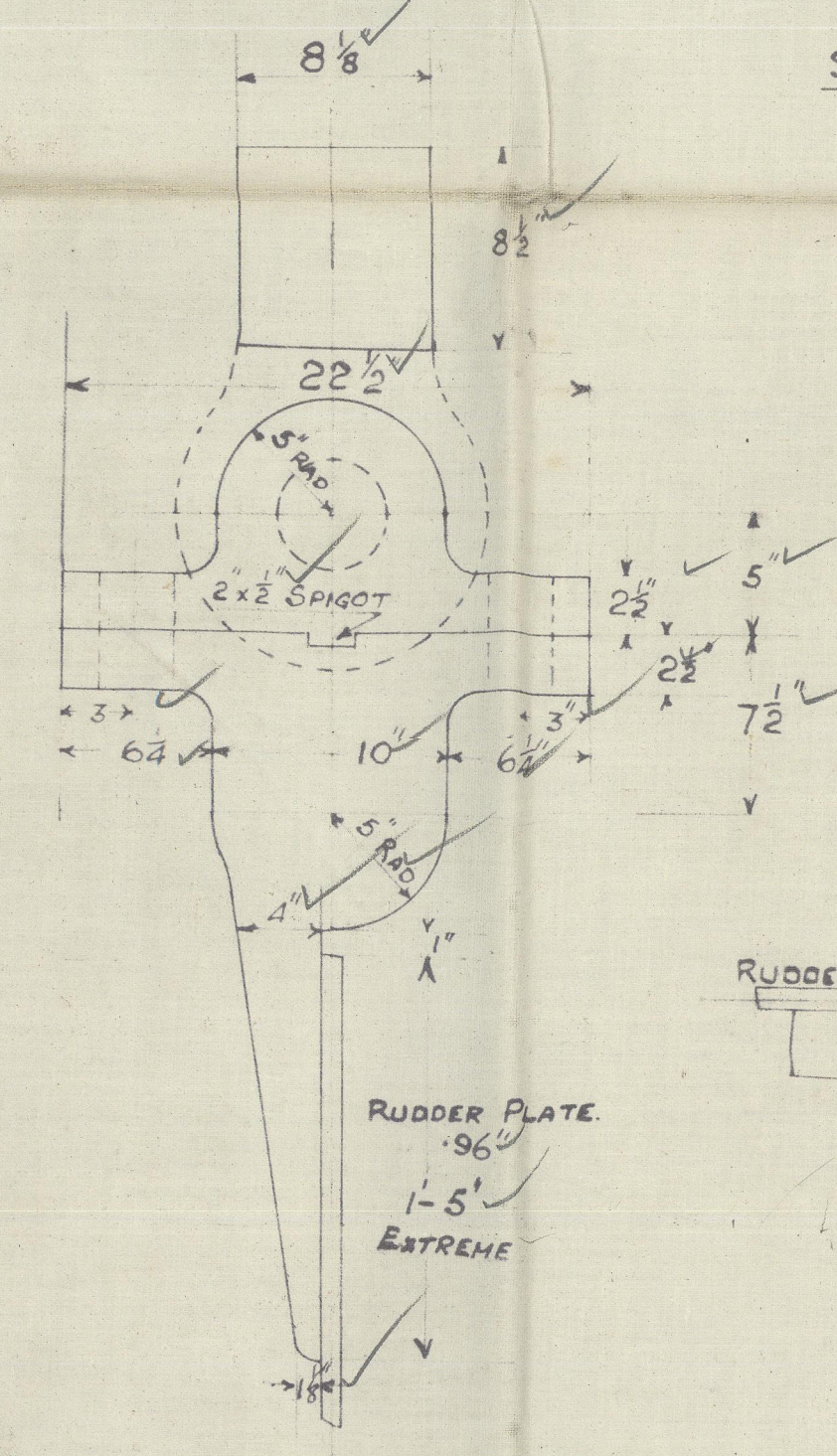
Drawn by —  
Traced by —  
Checked by —

Approved *HA*  
19/12/27

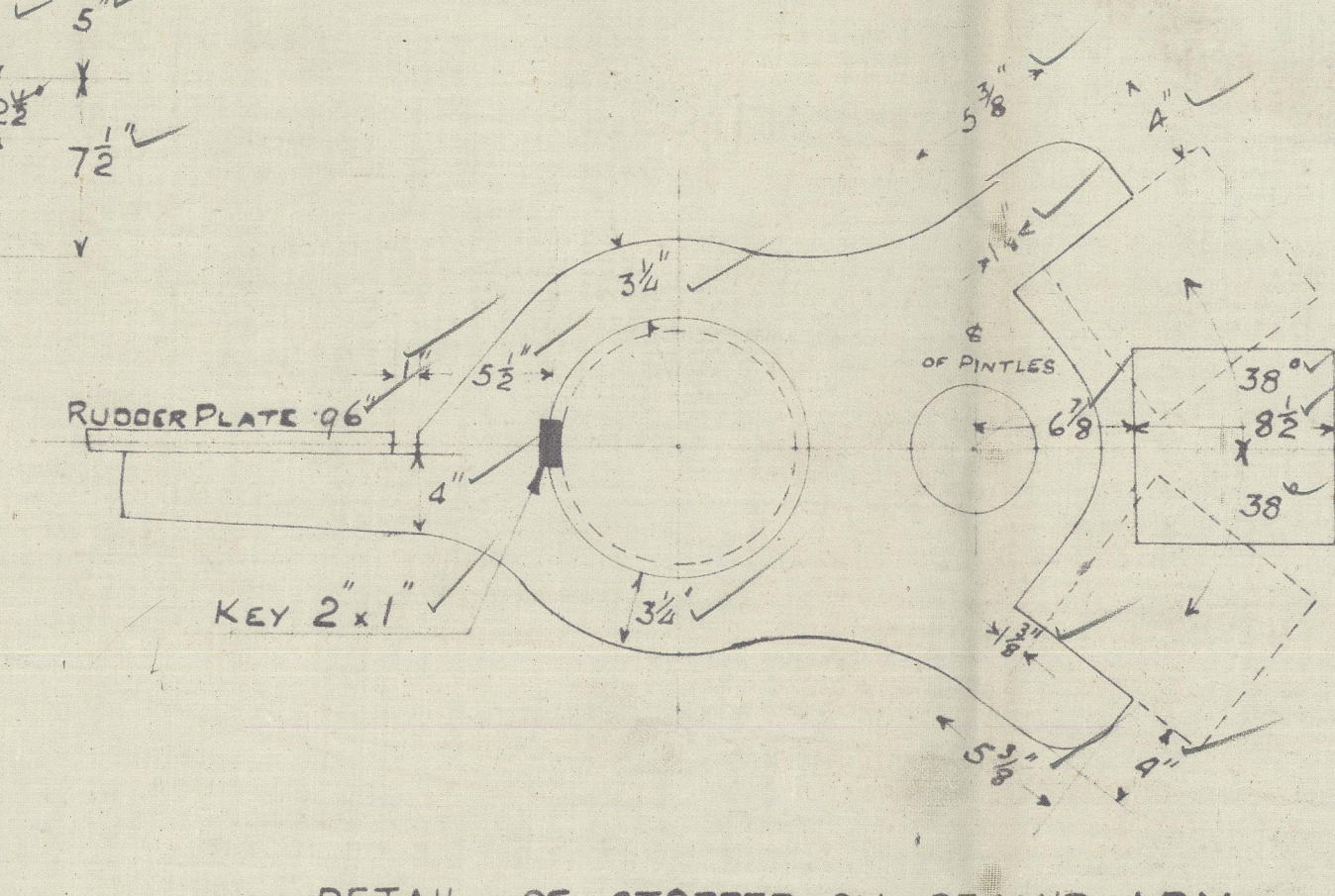


DETAIL OF TOP PINTLE & RUDDER COUPLING.

SCALE:  $\frac{1}{2}$ " = 1 FOOT.

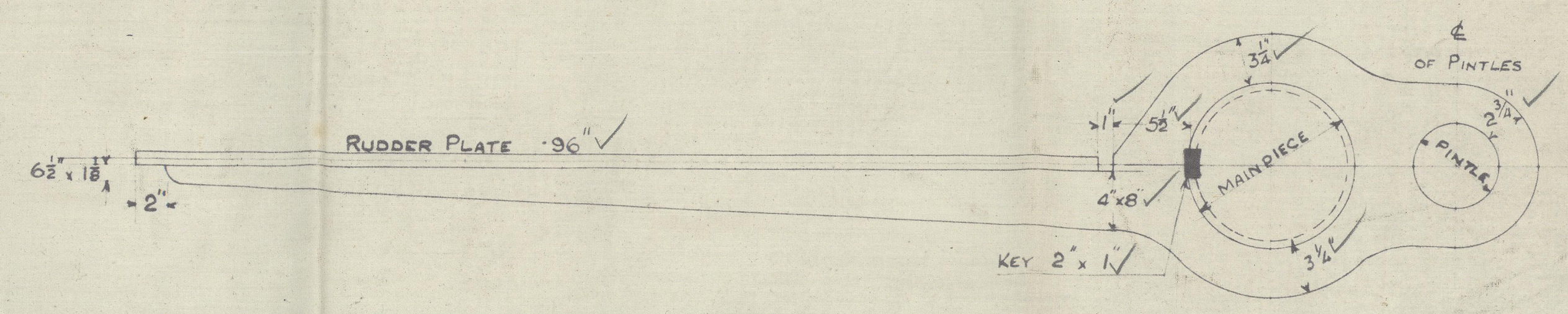


SECTION THRO' COUPLING.



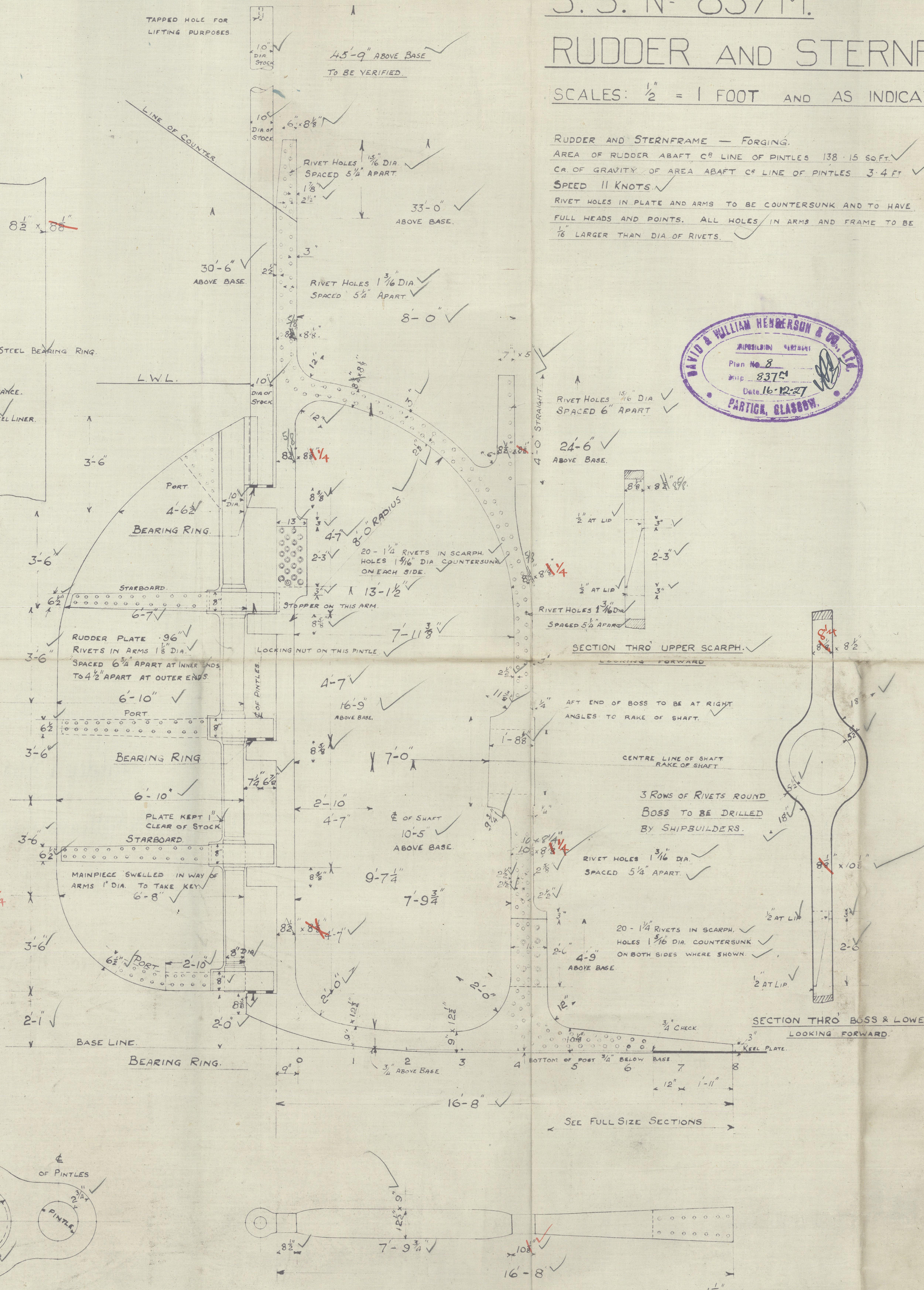
DETAIL OF STOPPER ON SECOND ARM.

SCALE  $\frac{1}{2}$ " = 1 FOOT.



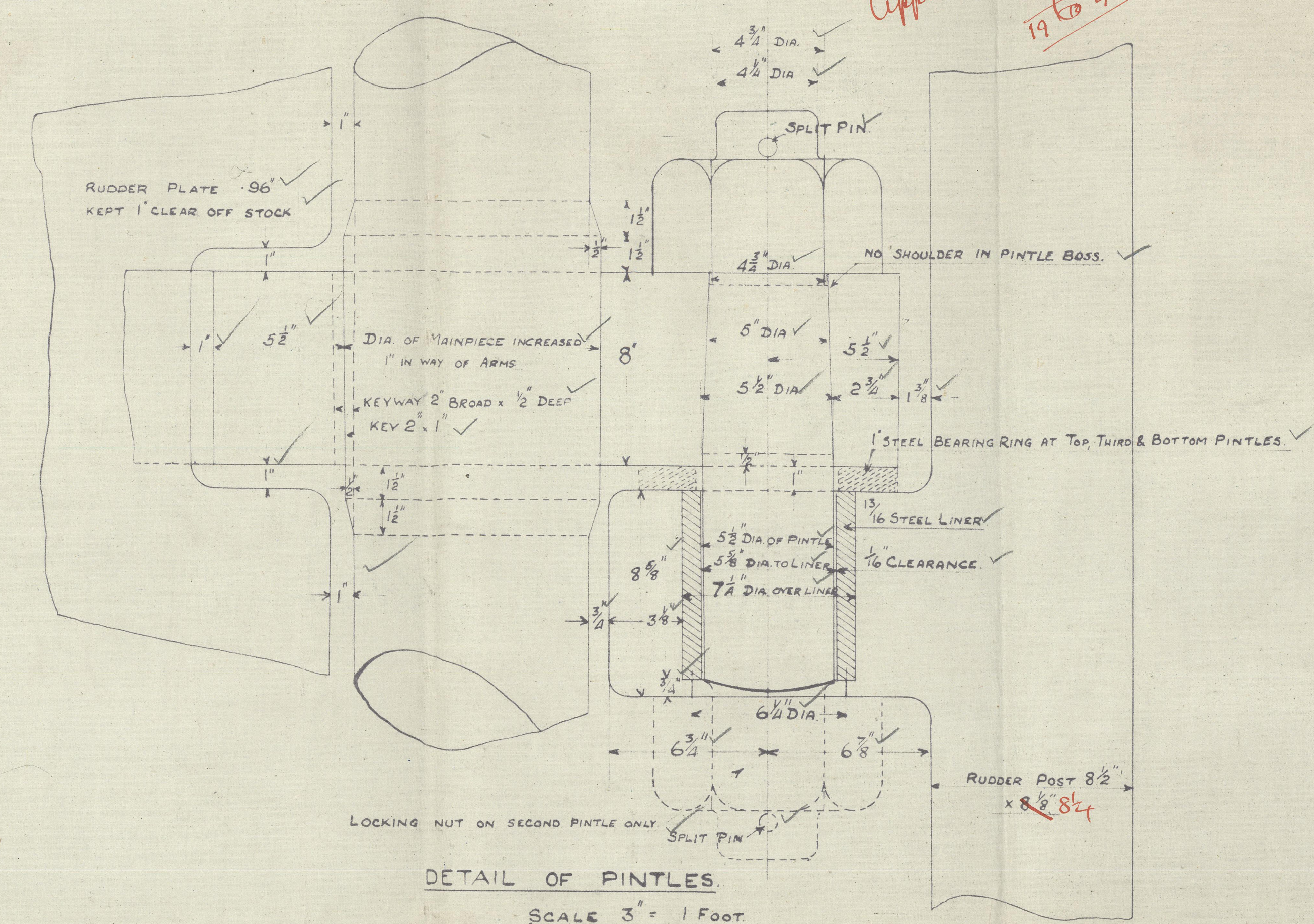
SECTION THRO' ARMS.

SCALE  $\frac{1}{2}$ " = 1 FOOT.



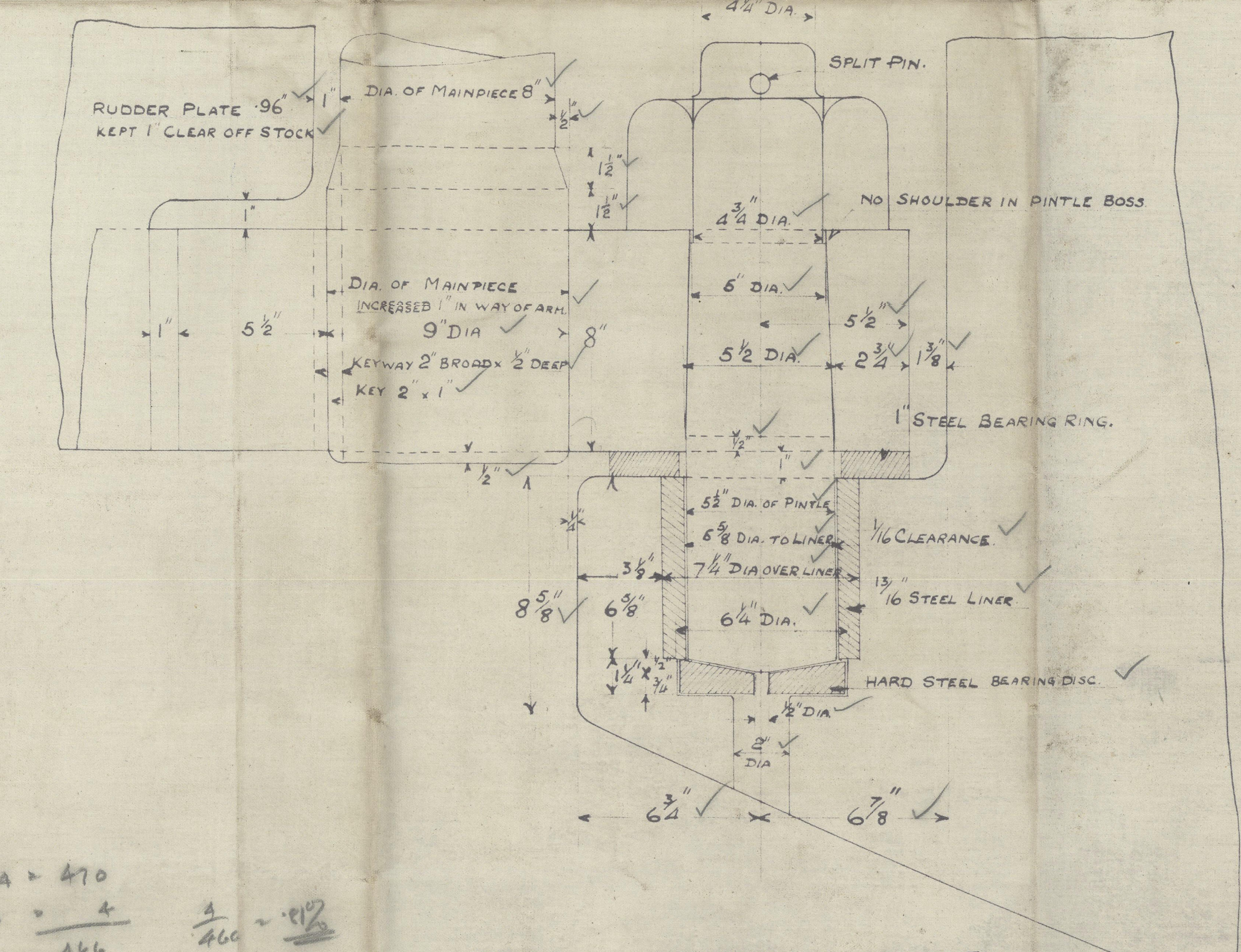
PLAN OF BOTTOM OF POST.

$\frac{1}{8}$ " RIVETS TO BE BORED  
SQUARE OFF OUTSIDE.



DETAIL OF PINTLES.

SCALE  $\frac{3}{4}$ " = 1 FOOT.



DETAIL OF BOTTOM PINTLE.

SCALE  $\frac{3}{4}$ " = 1 FOOT.

$$\begin{array}{r} 138 \times 3.4 = 470 \\ 21 \times 6 \times 3 = 378 \\ \hline 166 \end{array}$$
$$\frac{470}{166} = 2.83$$



3

Rudder & Sternpost

Dr W Henderson & Co. Ltd.

837<sup>M.</sup>

19. 12. 27.

"Beltic Monarch"

429  
NN 'BRITKON'\*

☆ - ✕

beg.



© 2020

Lloyd's Register  
Foundation

005344-005352-0212