

SHIP No 709.

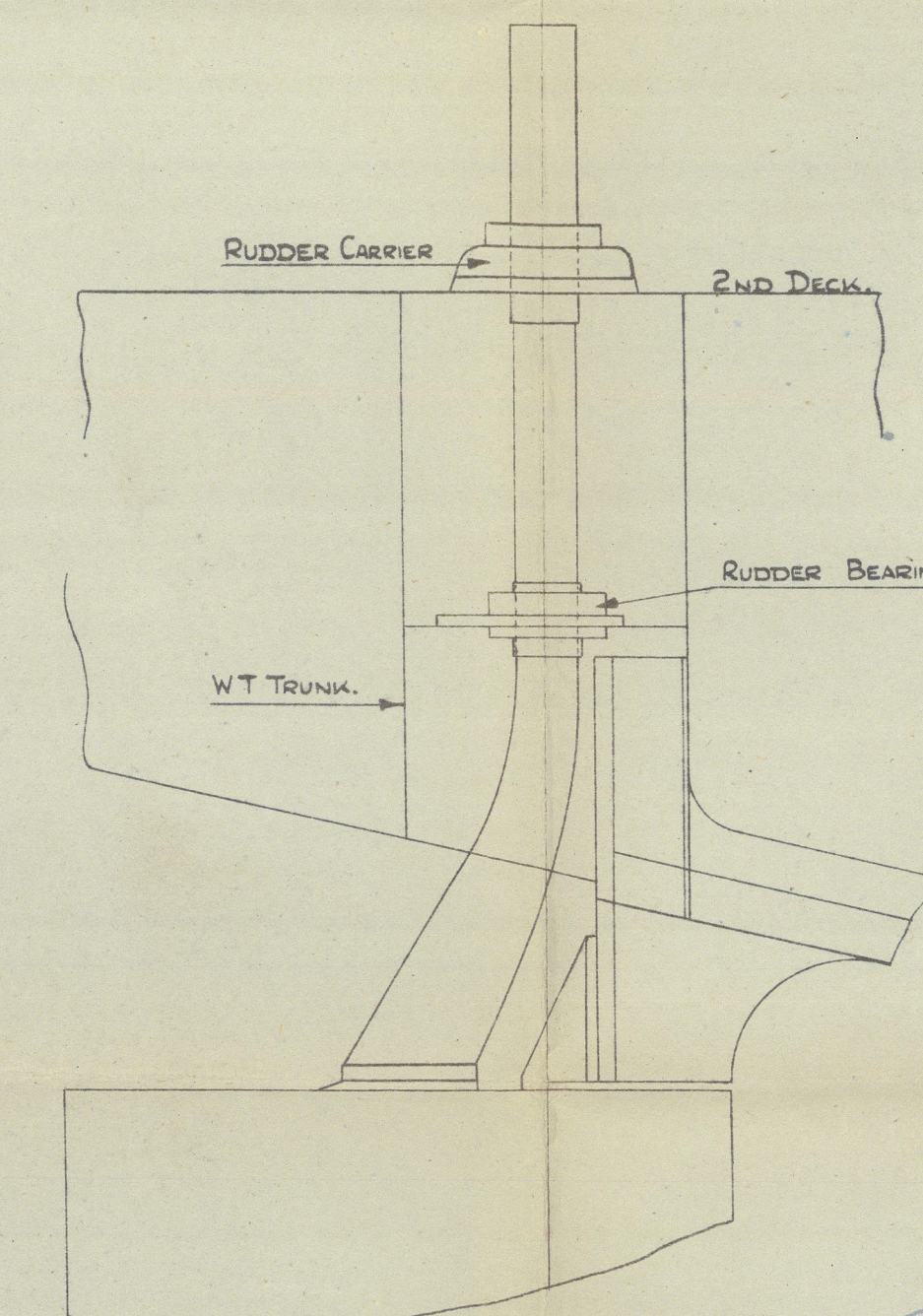
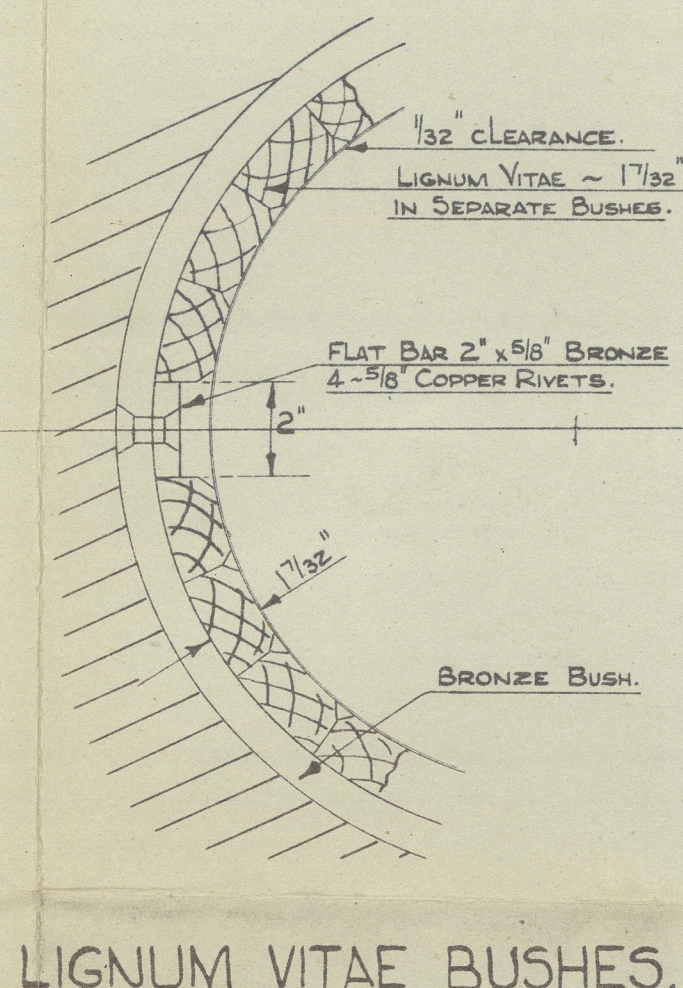
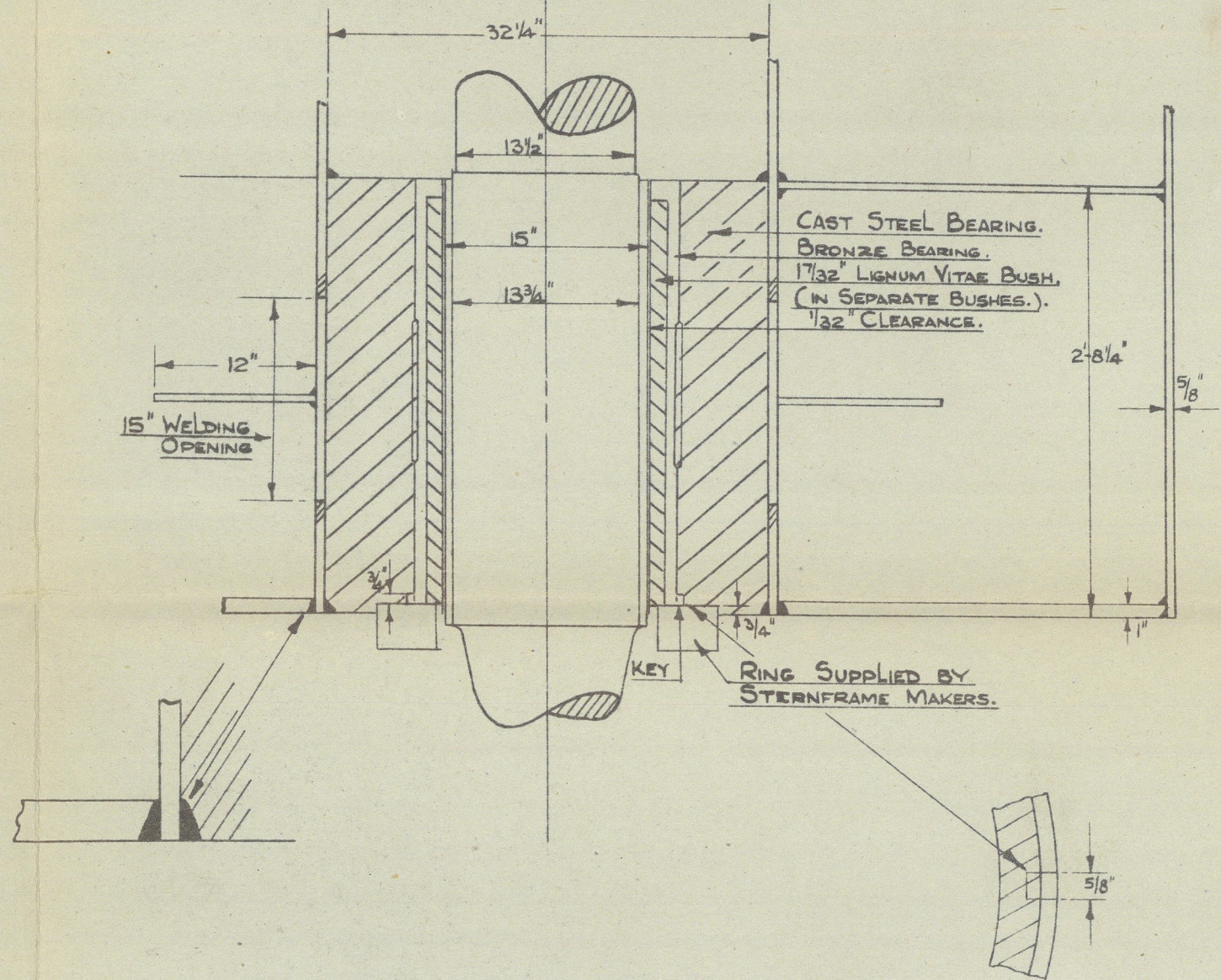
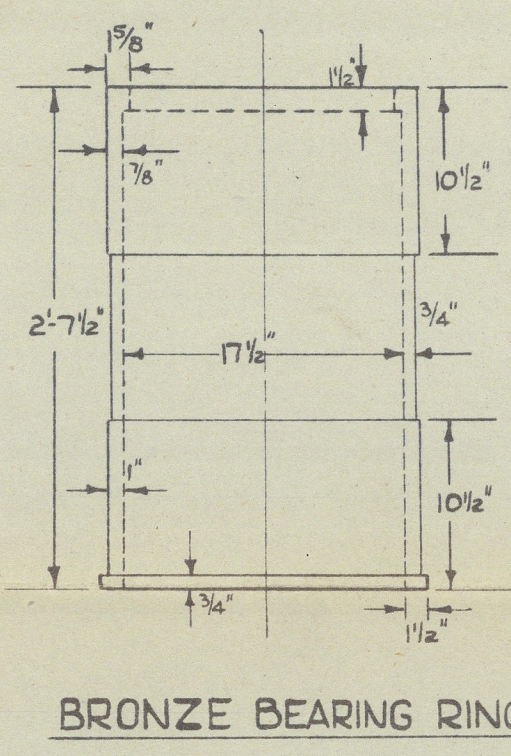
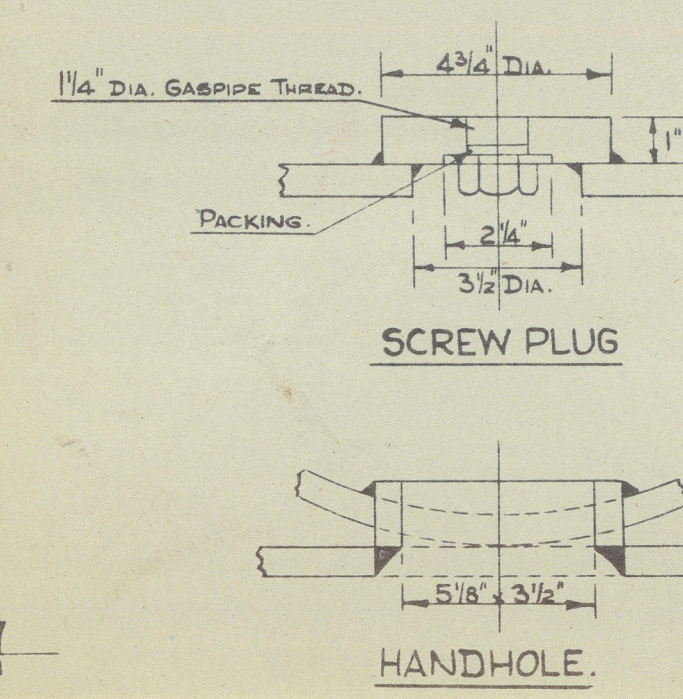
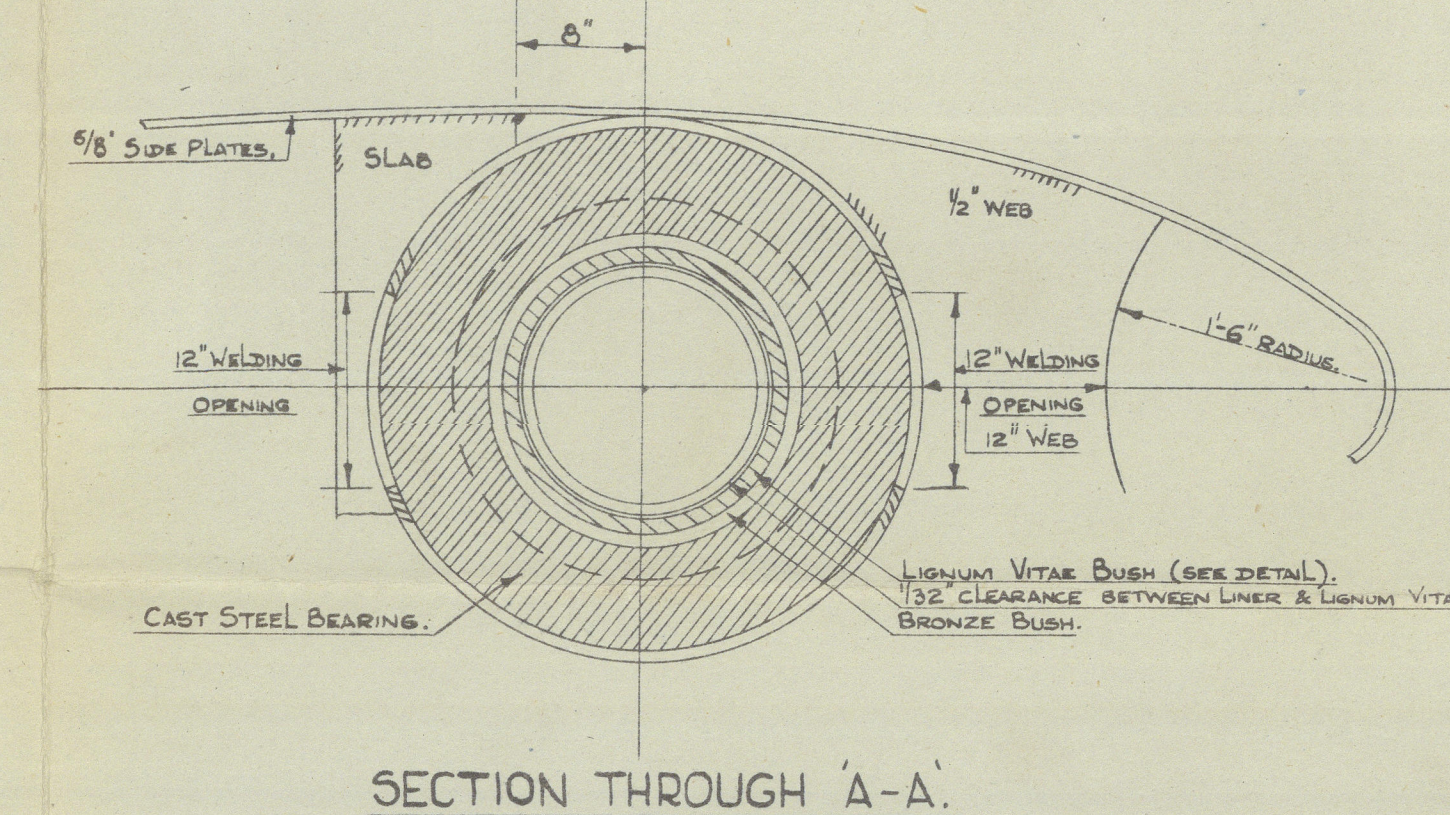
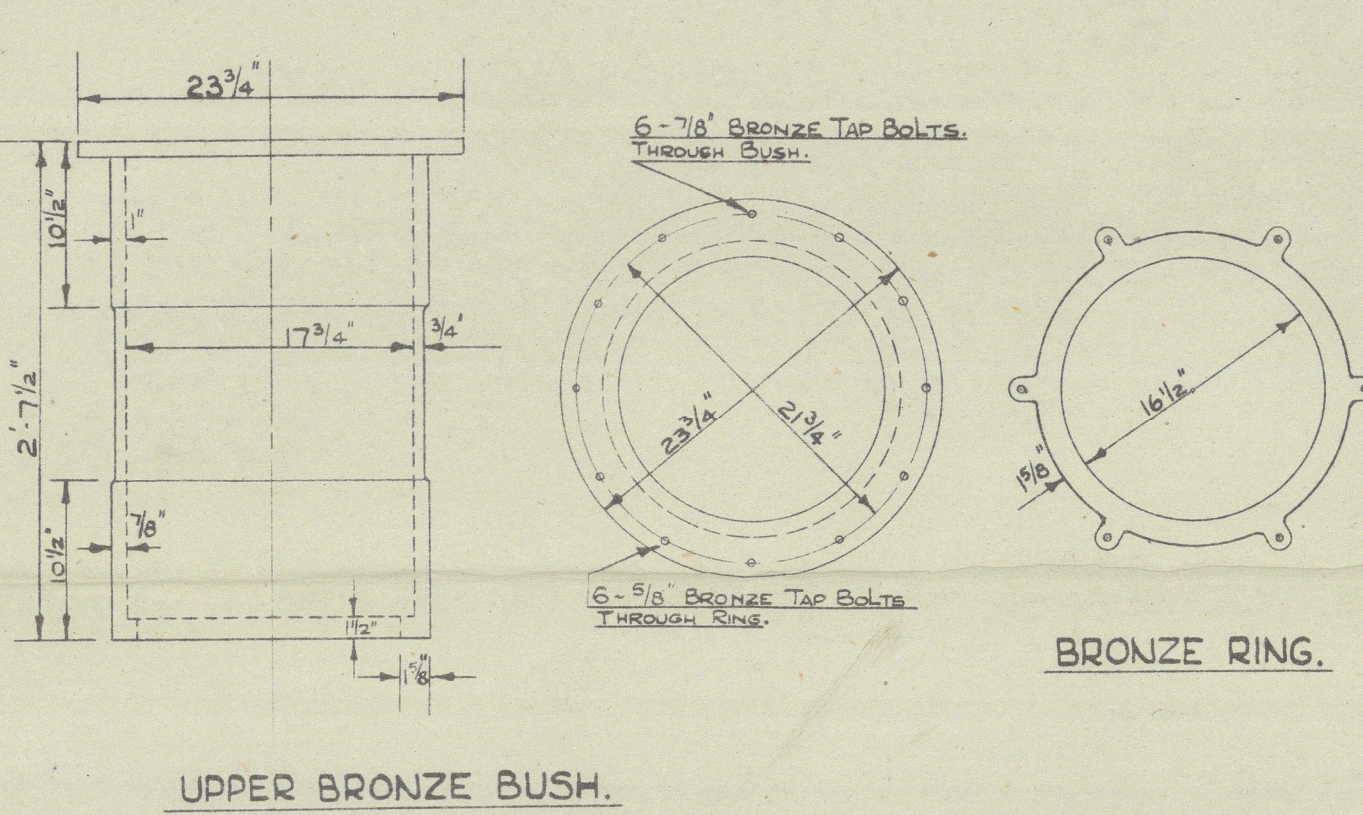
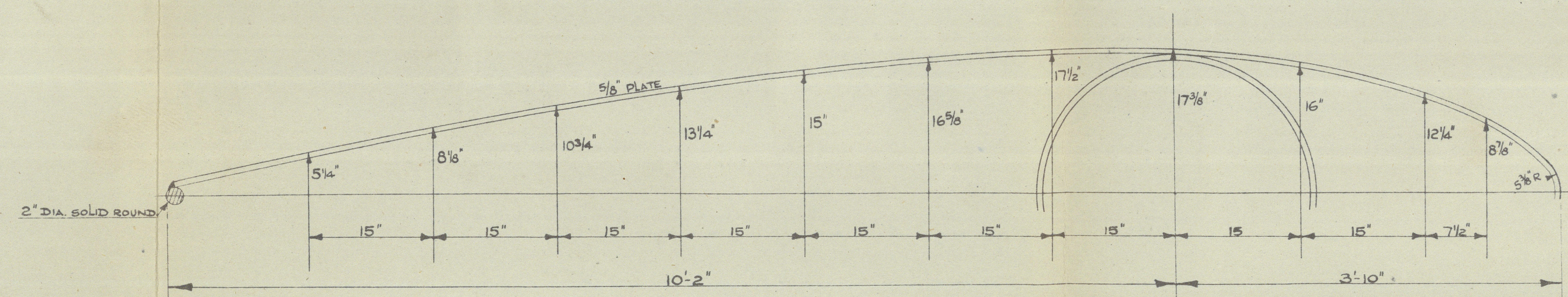
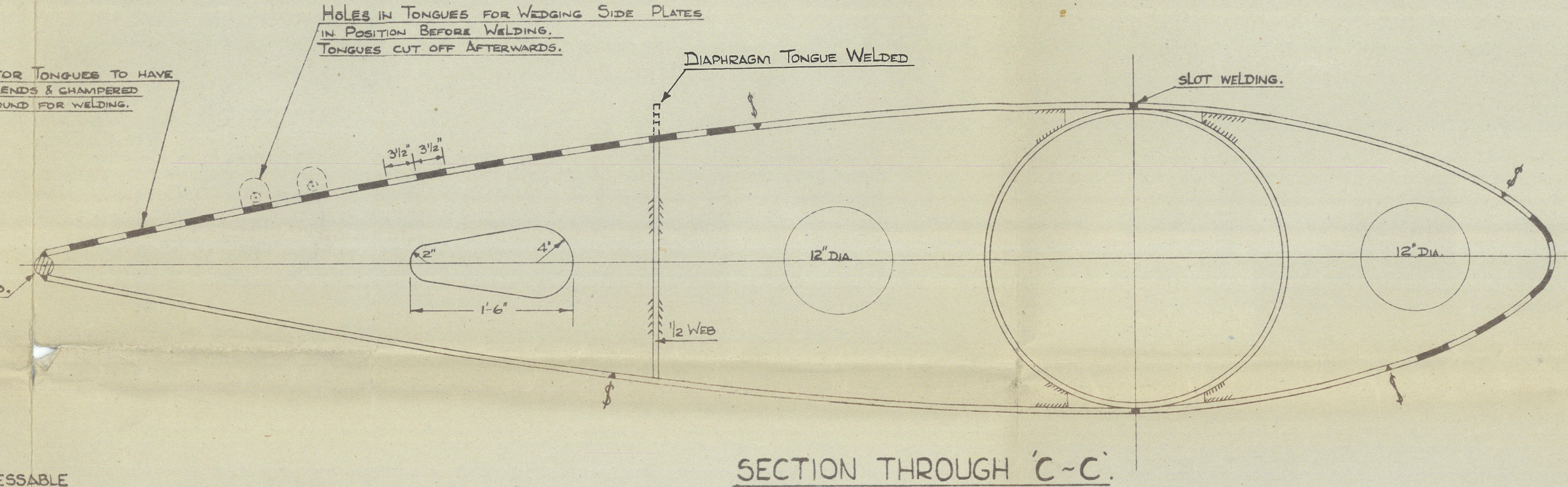
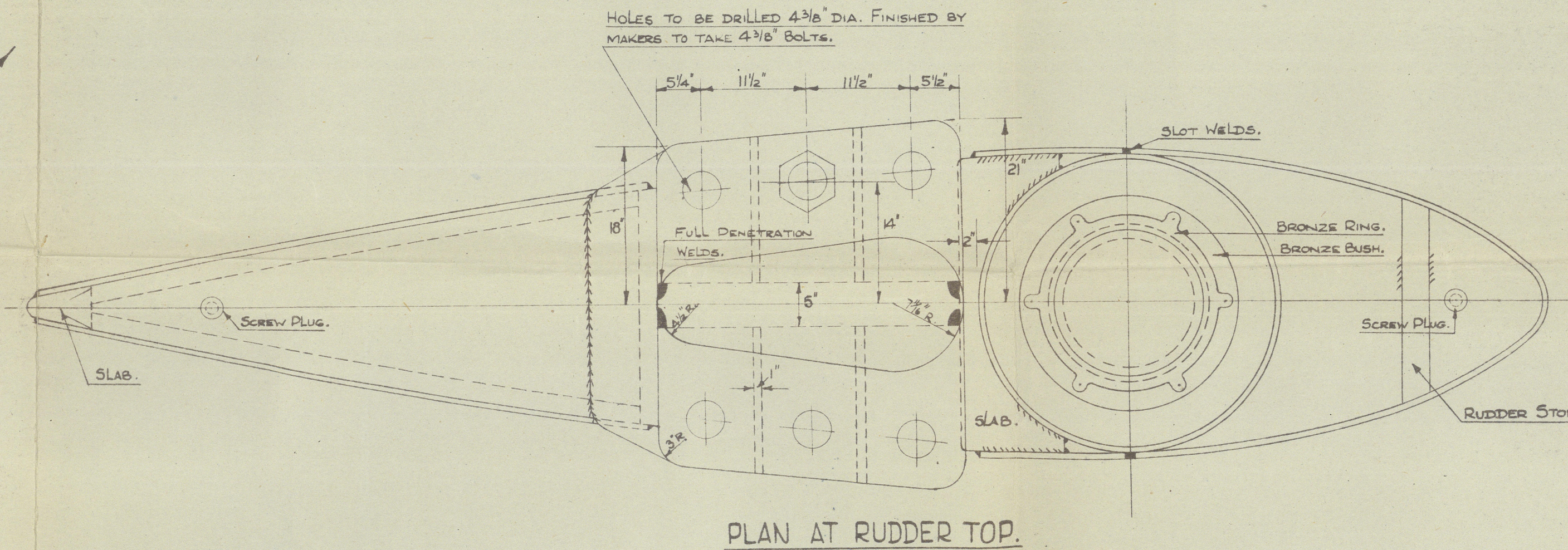
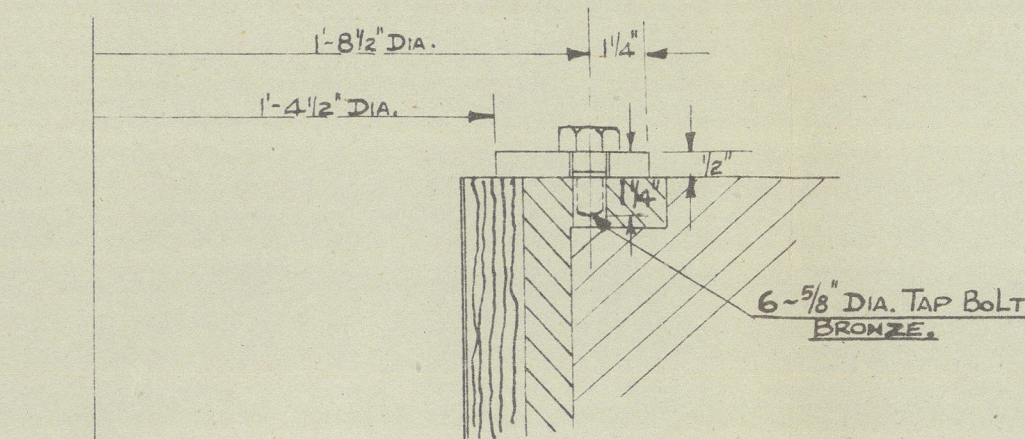
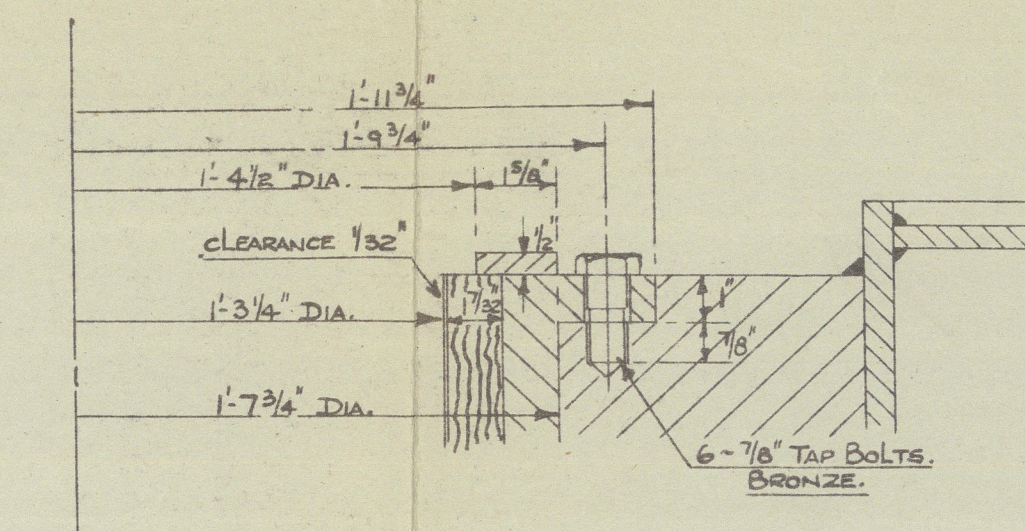
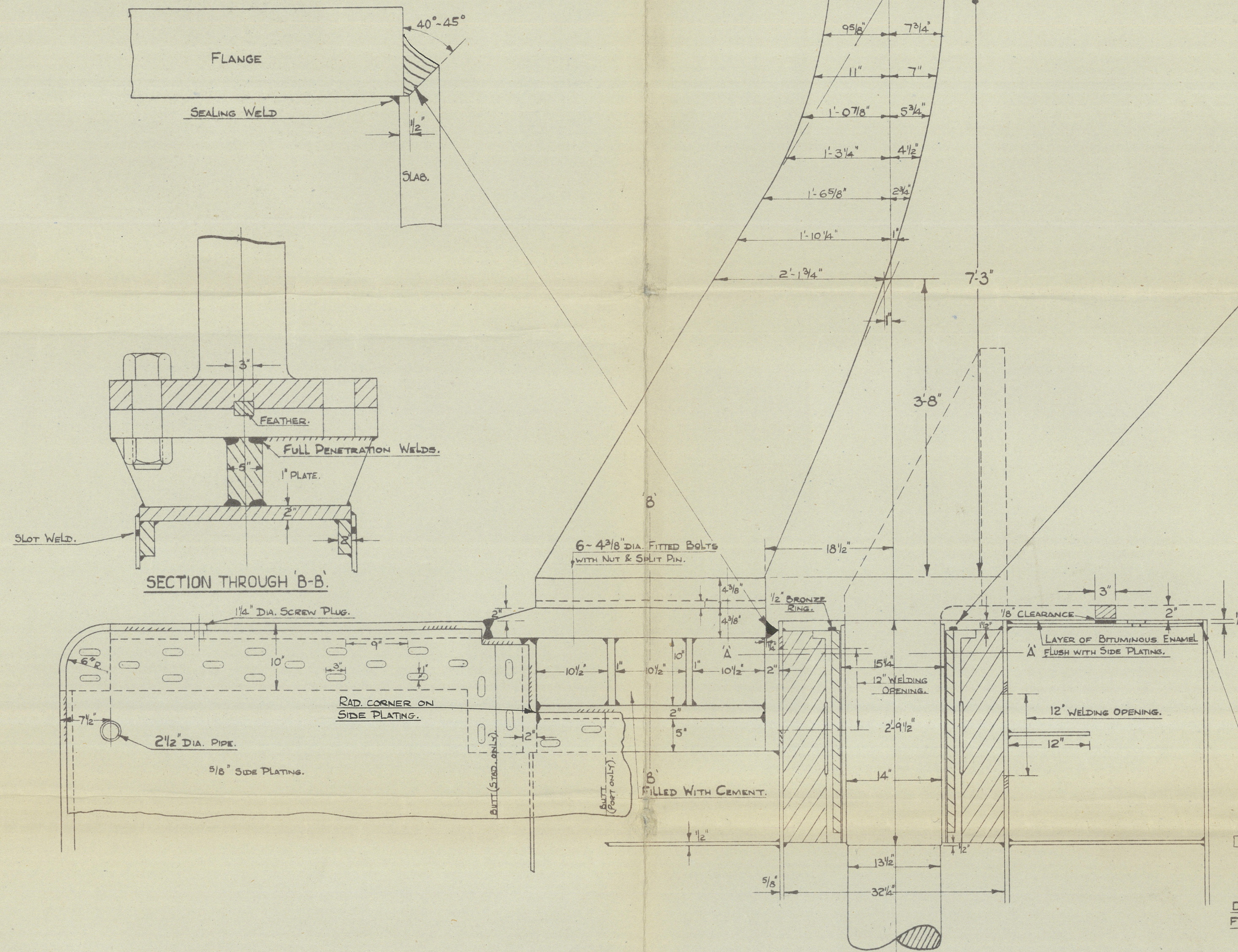
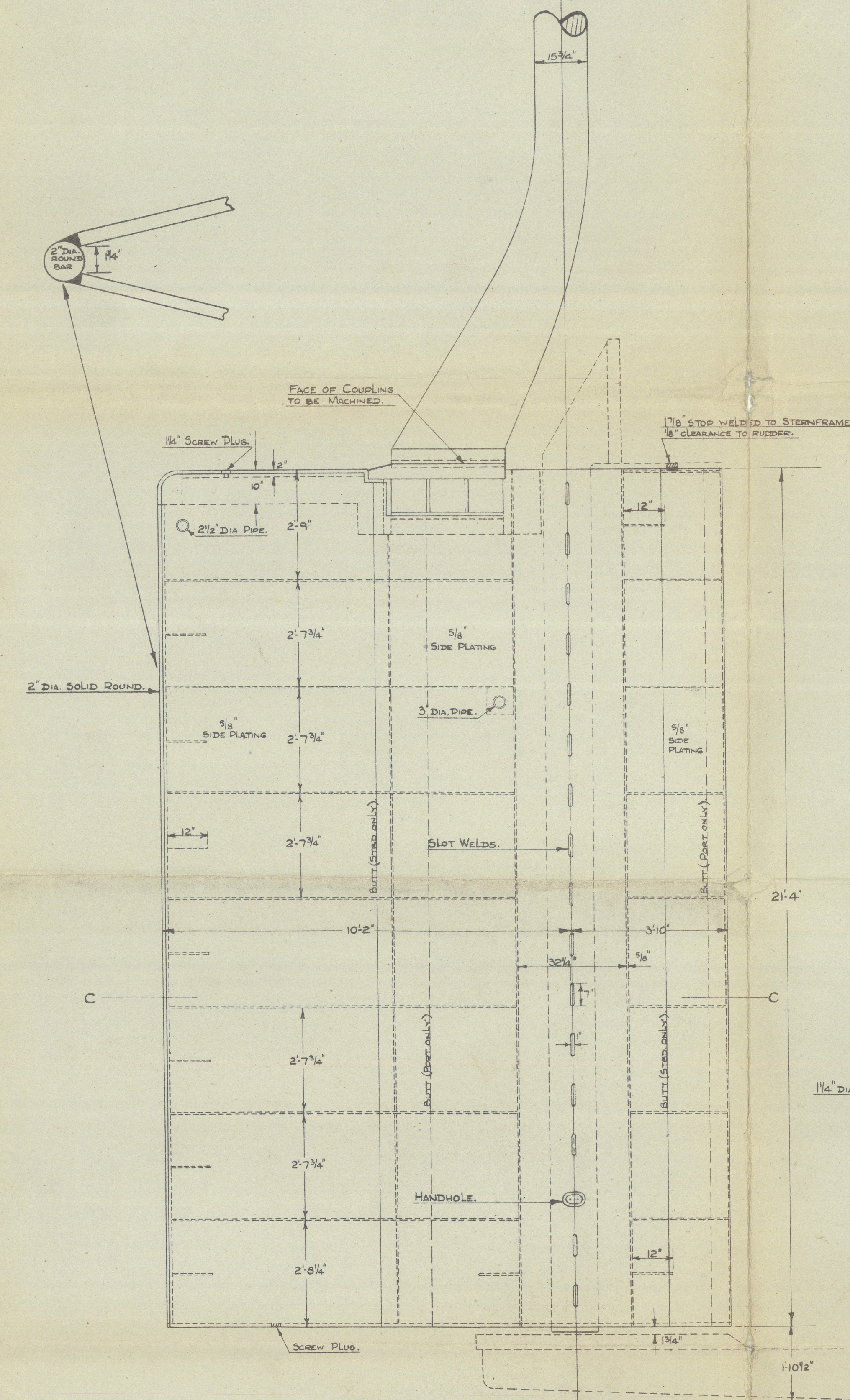
RUDDER.

PLAN No 2.

SCALES - ARRGT 1/2" = 1 FOOT. DETAILS - 1" = 1 FOOT.

TO PASS LLOYD'S TESTS & REQUIREMENTS.
 DIMENSIONS - 610'-0" LBP x 81'-0" B.M.D. x 44'-6" D.M.D.
 AREA ABAFT CENTRE LINE OF SPINDLE. = 26-93 SQ. FT.
 AREA FORWARD CENTRE LINE OF SPINDLE. = 81-69 " "
 A x D ABAFT CENTRE LINE OF SPINDLE. = 1102-00
 ALLOWANCE FOR A x D FORWARD OF SPINDLE. = 156-84
 A x D FOR LLOYD'S RULES. = 945-16
 RULE DIAMETER OF RUDDER STOCK. = 14-25
 + 10% FOR TANKERS. = 14-25
 SPEED IN KNOTS. = 16
 SIZE OF RUDDER STOCK. = 15-675 SAY 15 3/4" DIA.

ON COMPLETION THE RUDDER IS TO BE SUBJECTED TO AN
 INTERNAL PRESSURE OF 14 LB./SQ. IN.
 INTERNAL SURFACES OF RUDDER TO BE COATED WITH A BITUMINOUS
 SOLUTION.



KEY PLAN SHOWING POSITION
 OF RUDDER CARRIER & BEARING.

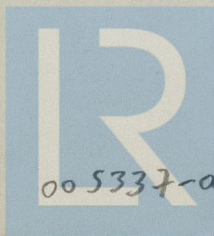
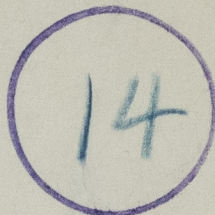
24.3.19

RECORDS DEPT

LONDON

British Crown

Rudder



© 2020

343-289

005337-005343-0089





005337-005343-0089



© 2020

Lloyd's Register
Foundation

No 1208.

(68)

RUDDER PLAN.

005337-05343-0089



© 2020

Lloyd's Register
Foundation