

SHIP No 709.

C.L. & Co. No 120 F

FABRICATED STERNFRAME.

SCALE: 1/2" = 1 FOOT.

PLAN No 1.

TO PASS LLOYDS TESTS & REQUIREMENTS.

NOTES.

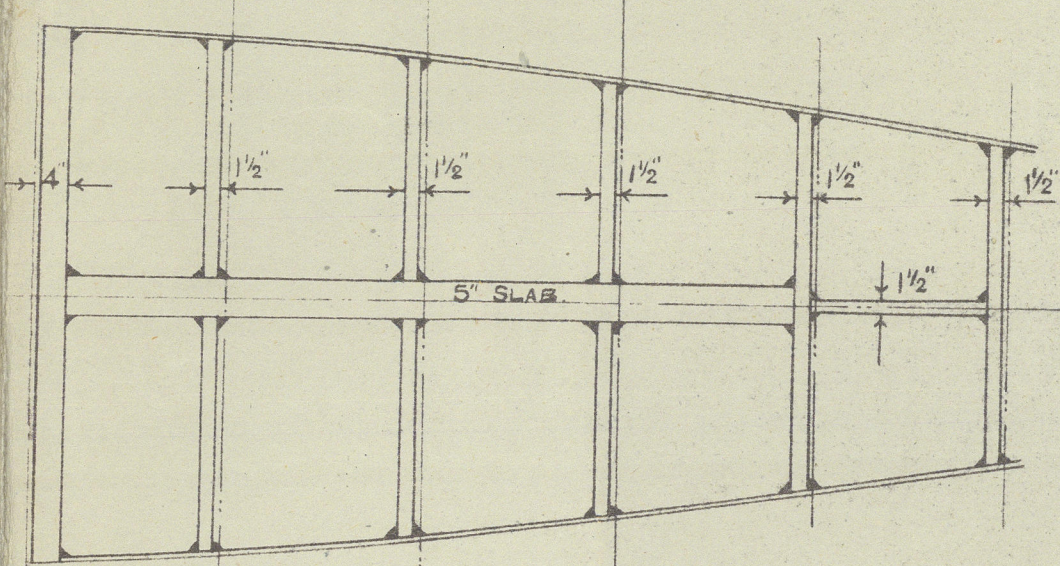
DIMENSIONS ON THIS DRAWING TO BE CAREFULLY WORKED TO & ANY EXCESS OVER CALCULATED WEIGHT WILL NOT BE PAID FOR.
STERNFRAME MAKERS TO DRILL THE HOLES FOR THE PALMED END CONNECTION OF THE POST, OUT THE KEYWAY AND TO FINISH BORE THE LOWER GUDGEON & OUT THE RECESS.

RUDDER POST TO BE FITTED IN STERNFRAME BEFORE DISPATCH.
FULL SIZE SECTIONS ON TEMPLATE PAPER TO BE SENT LATER AND MUST BE WORKED TO IN PRECEDENCE TO THIS PLAN.
WEIGHT & SHIPS NUMBER TO BE PAINTED ON.
RUDDER BACKPOST TO BE SUPPLIED BY MAKERS COMPLETE WITH NECESSARY LINERS AND WITH LOWER END COMPLETE WITH NUT & COTTER PIN.
TOP PALM TO BE MACHINED & COMPLETE WITH COUPLING BOLTS.
POST TO BE OF BEST QUALITY FORGED STEEL.

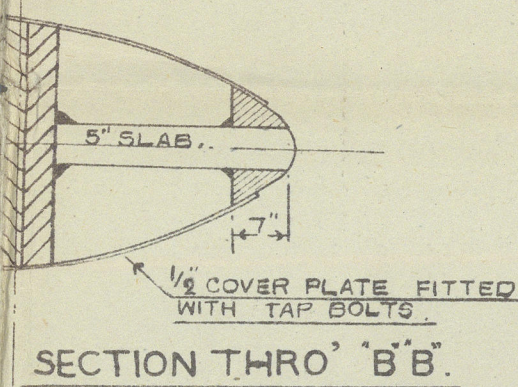
LENGTH B.P. 6'0" - 0"
BREADTH M.L.D. 8'1" - 0"
DEPTH M.L.D. 44" - 6"
WATERLINE 33" - 6"
SPEED 16 KNOTS.

ENGINE PARTICULARS.

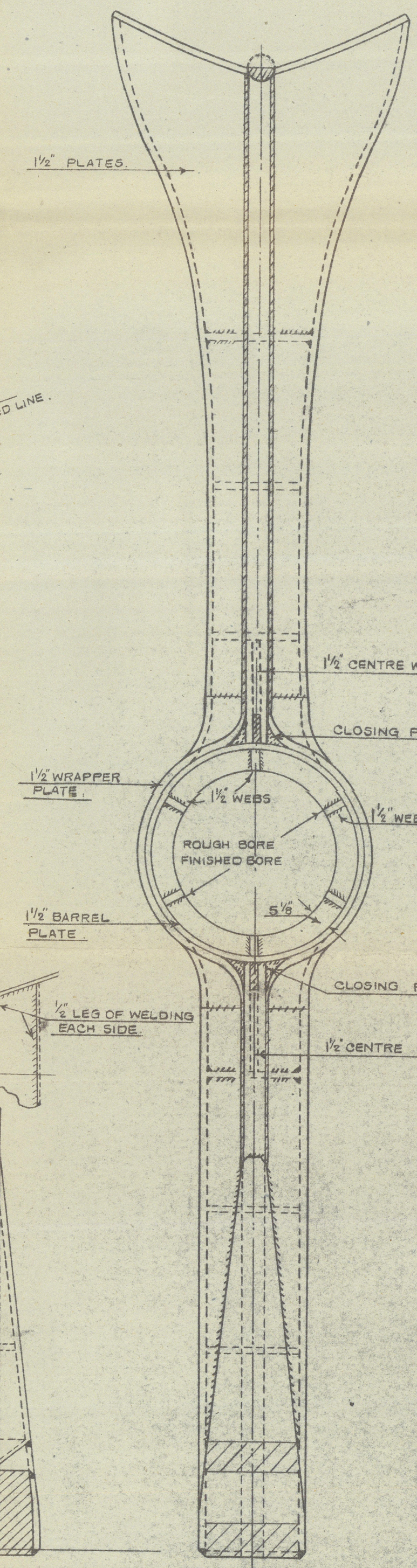
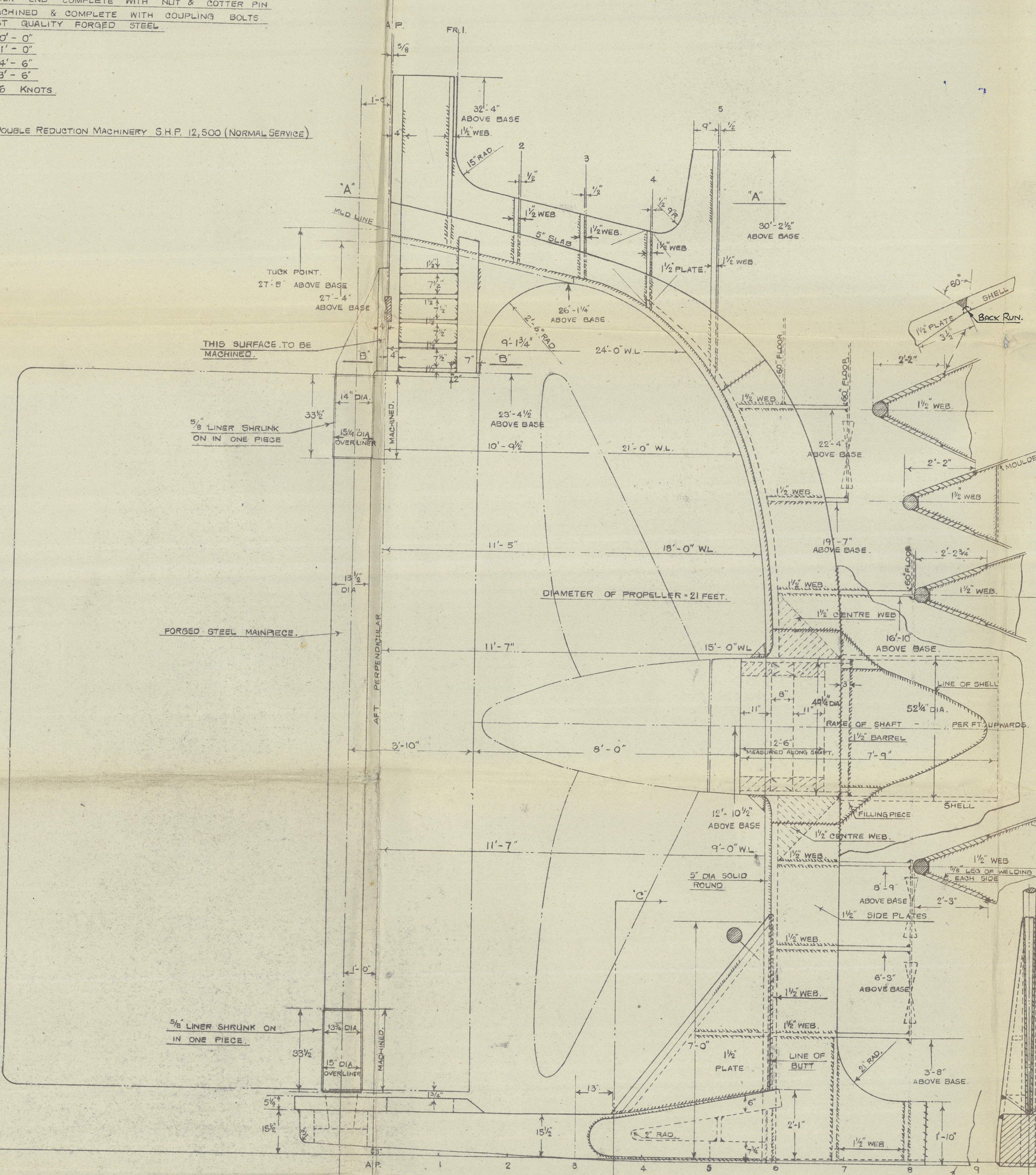
SINGLE SCREW TURBINE DOUBLE REDUCTION MACHINERY S.H.P. 12,500 (NORMAL SERVICE)
AT 112 REVS PER MIN.



SECTION THRO' 'A'A'.

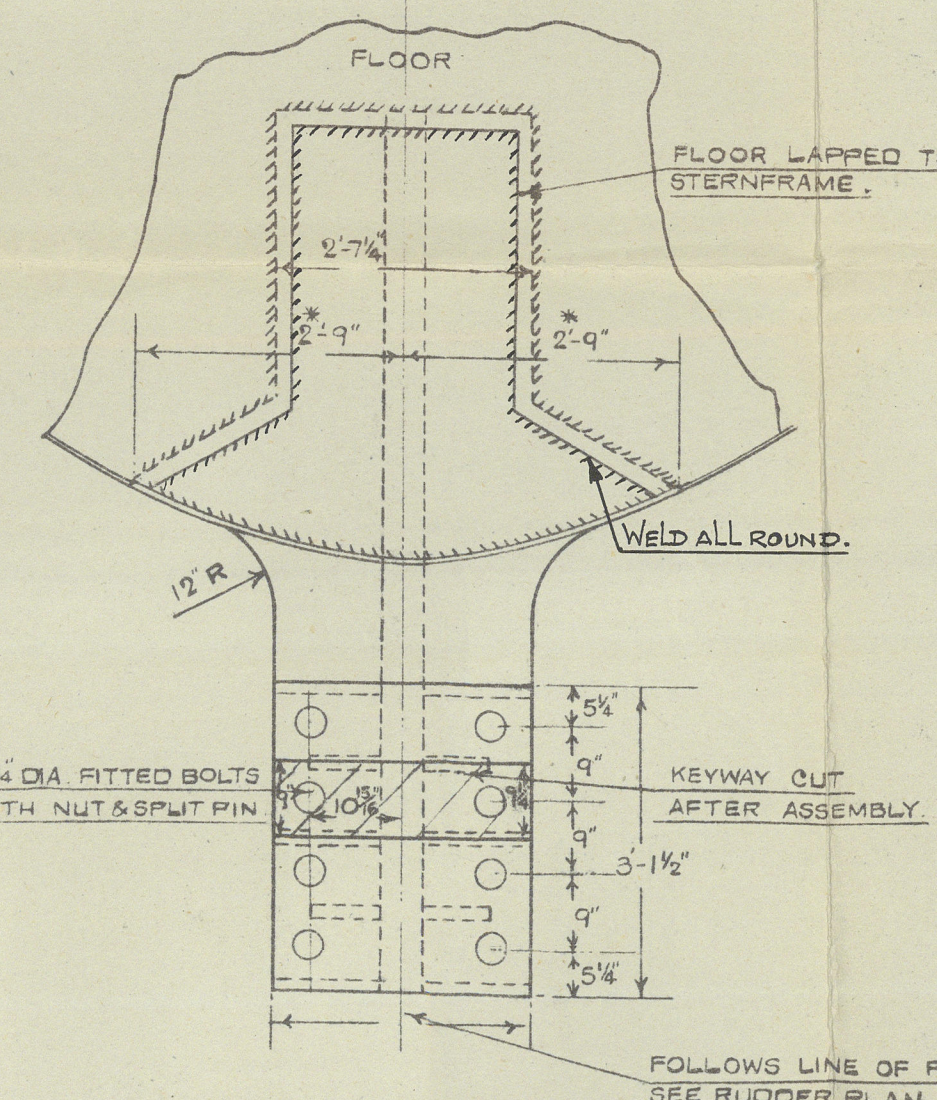


SECTION THRO' 'B'B'.

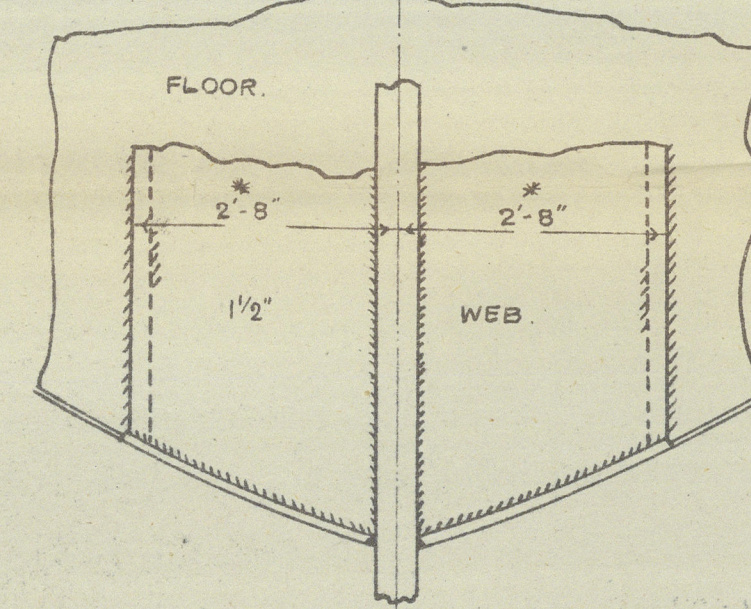


SECTION THRO' 'C'C'.

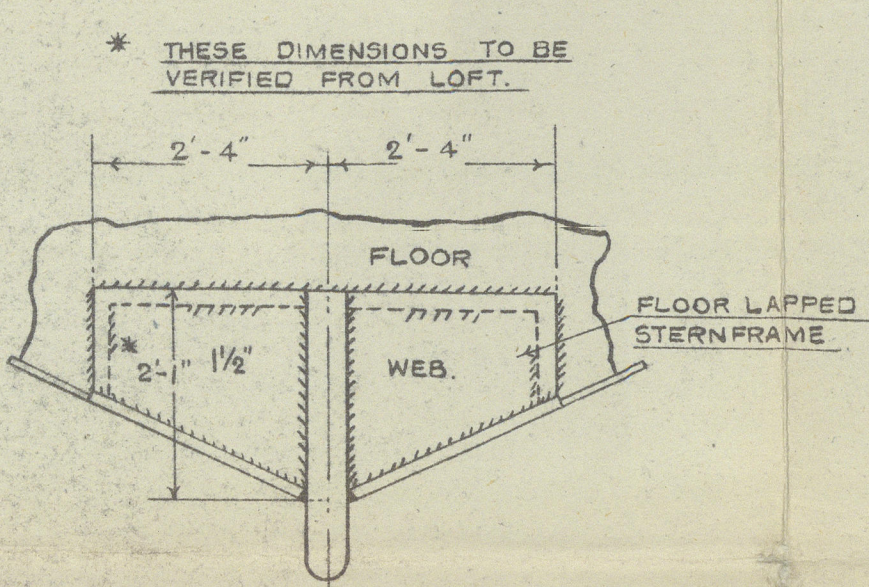
SECTION AT STERN POST.



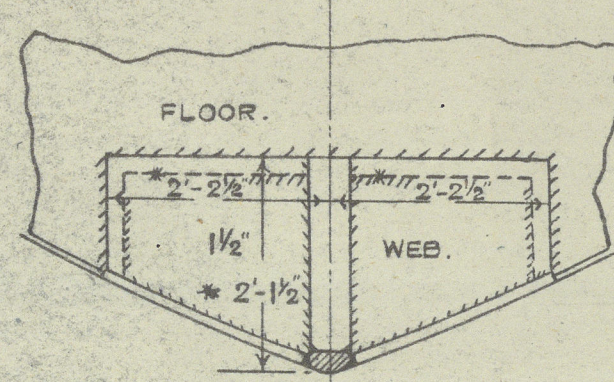
SECTION AT A.P.



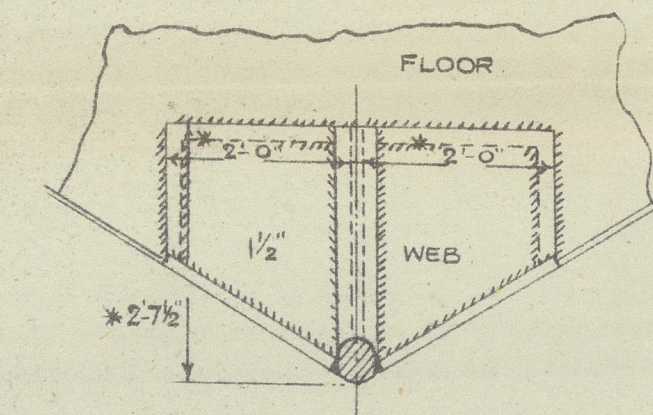
SECTION AT FRAME 1.



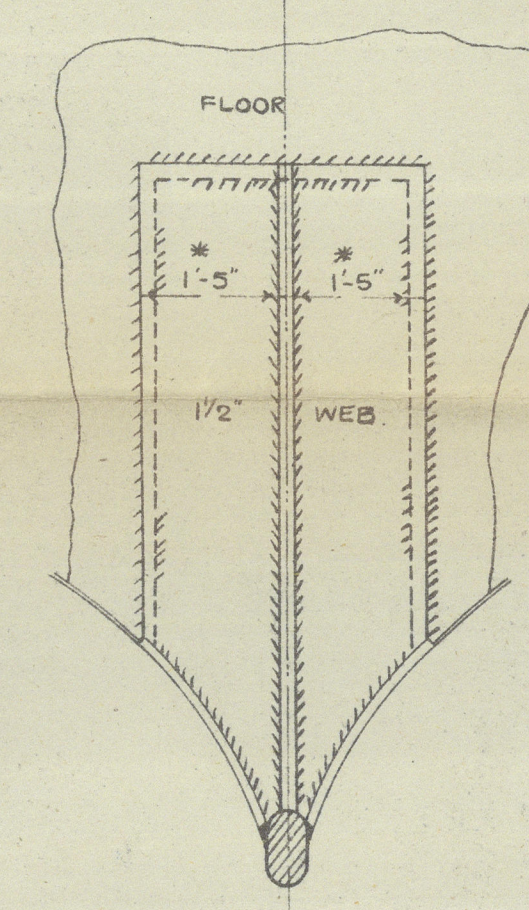
SECTION AT FRAME 2.



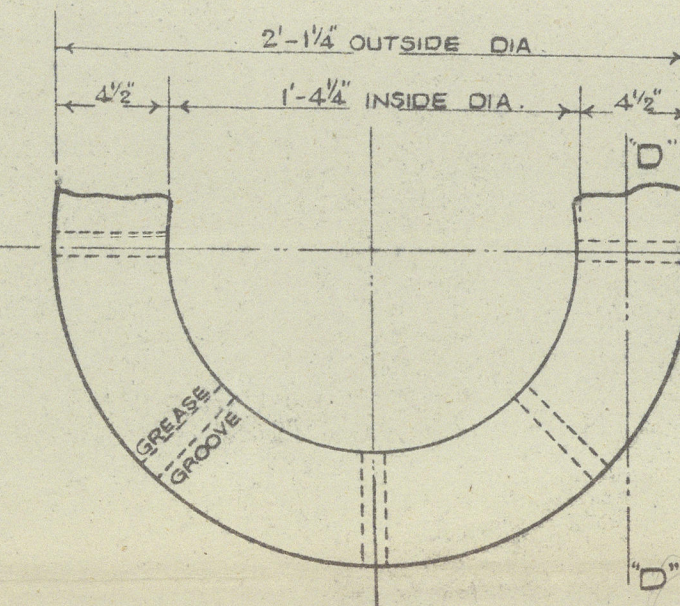
SECTION AT FRAME 3.



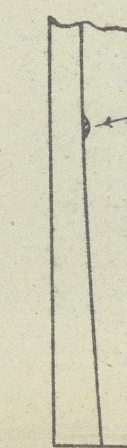
SECTION AT FRAME 4.



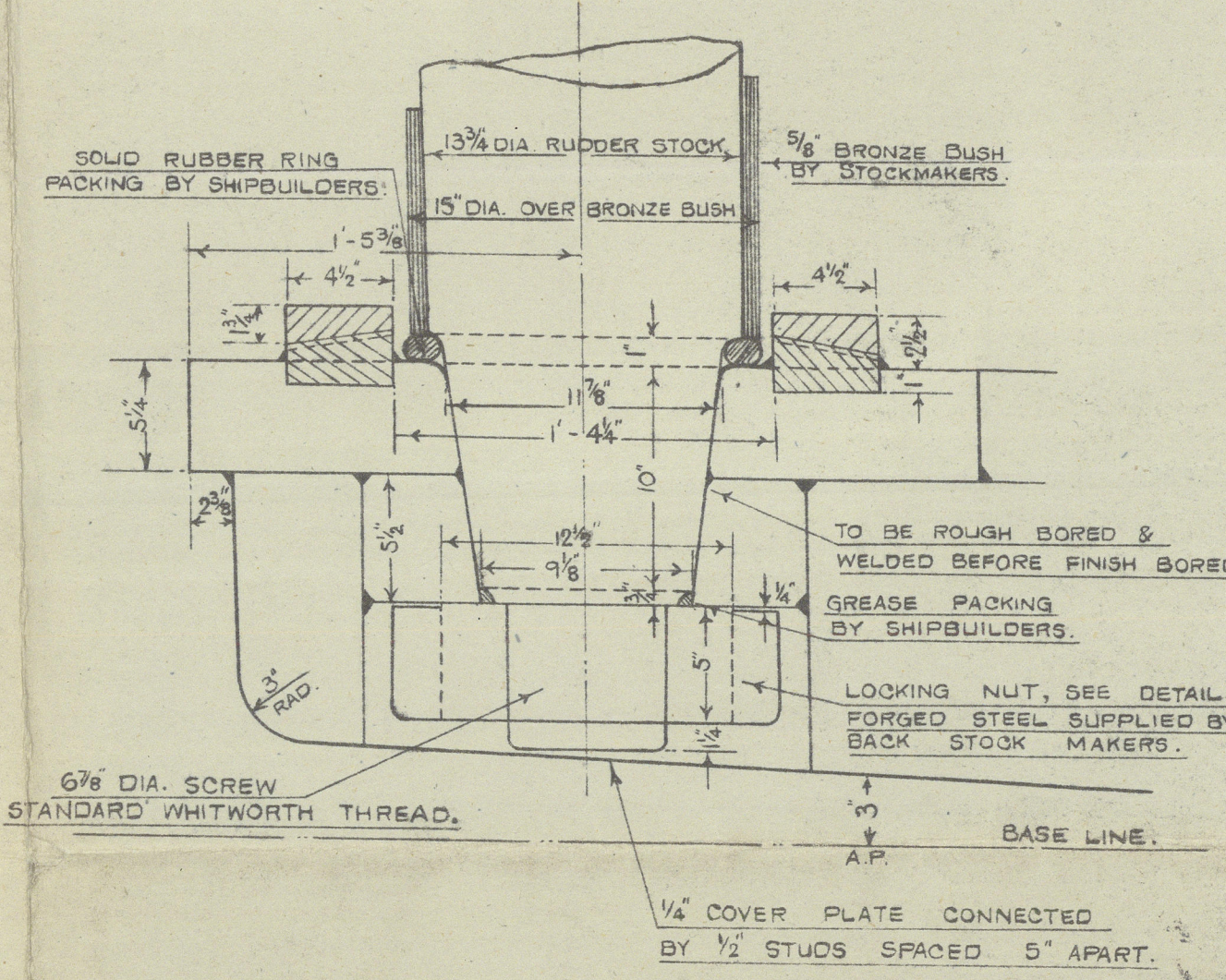
SECTION AT FRAME 5.



DETAIL OF BEARING RINGS.



SECTION THRO' 'D'D'.



DETAIL OF BACK POST CONNECTION TO STERNFRAME HEEL.

SCALE: 1/2" = 1 FOOT.

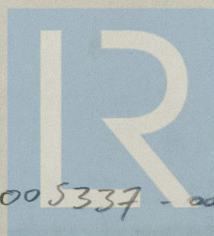


© 2020 Lloyd's Register Foundation

RECORDS DEPT
LONDON

British Crown ★
Tab Stem frame

15



© 2020

Lloyd's Register
Foundation

005337 - 005343 - 0087