

Lloyd's Register of Shipping.
SURVEYS FOR FREEBOARD.
(CONDITIONS OF ASSIGNMENT.)

Shd 9291

Ship's Name "BRITISH CROWN"

Port of Survey Birkenhead

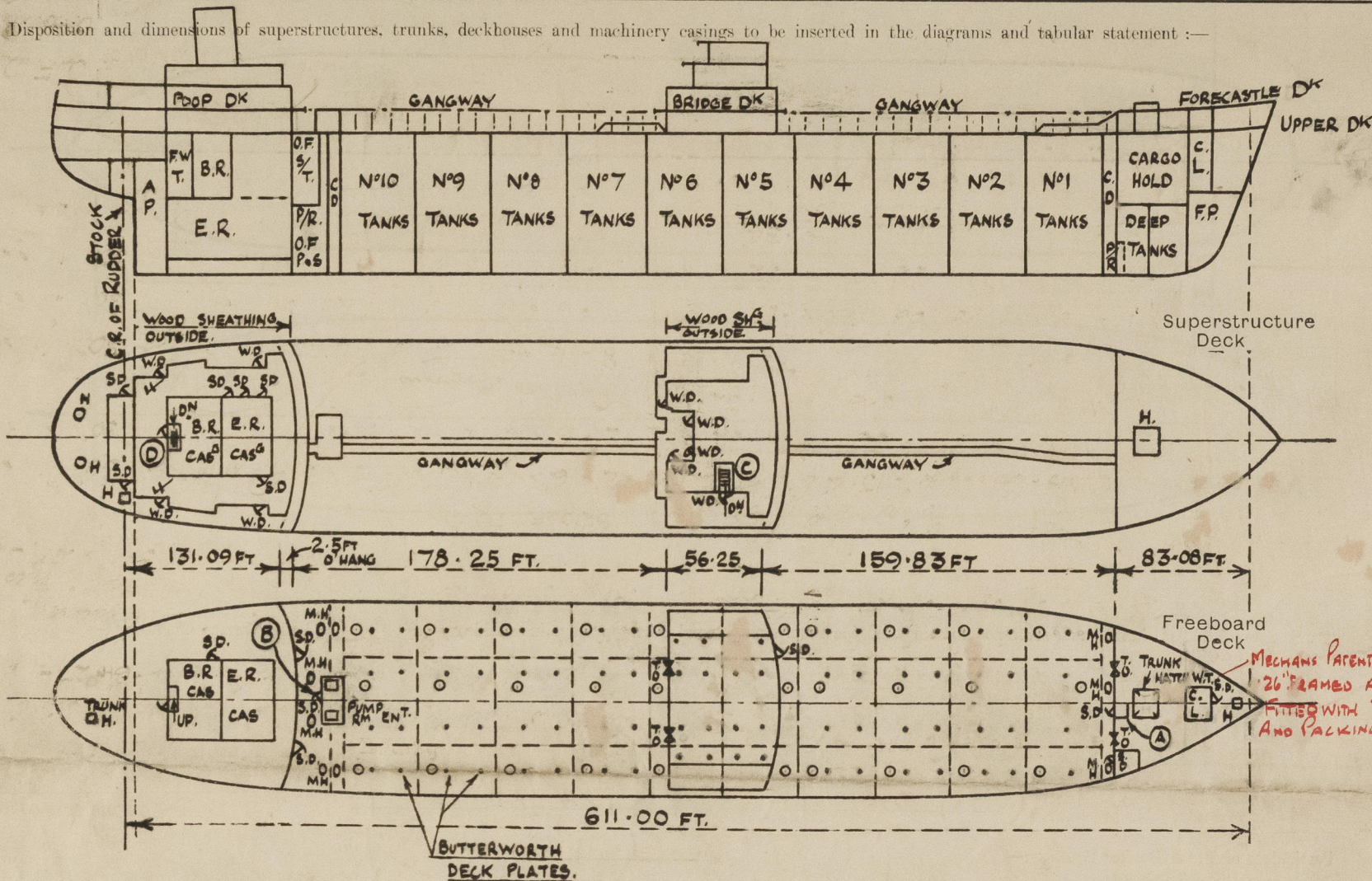
Official Number

Surveyor's Signature Harry S. Weston & J. B. Taylor

Nationality and Port of Registry BRITISH

Date of Survey Whilst Building

Disposition and dimensions of superstructures, trunks, deckhouses and machinery casings to be inserted in the diagrams and tabular statement :-



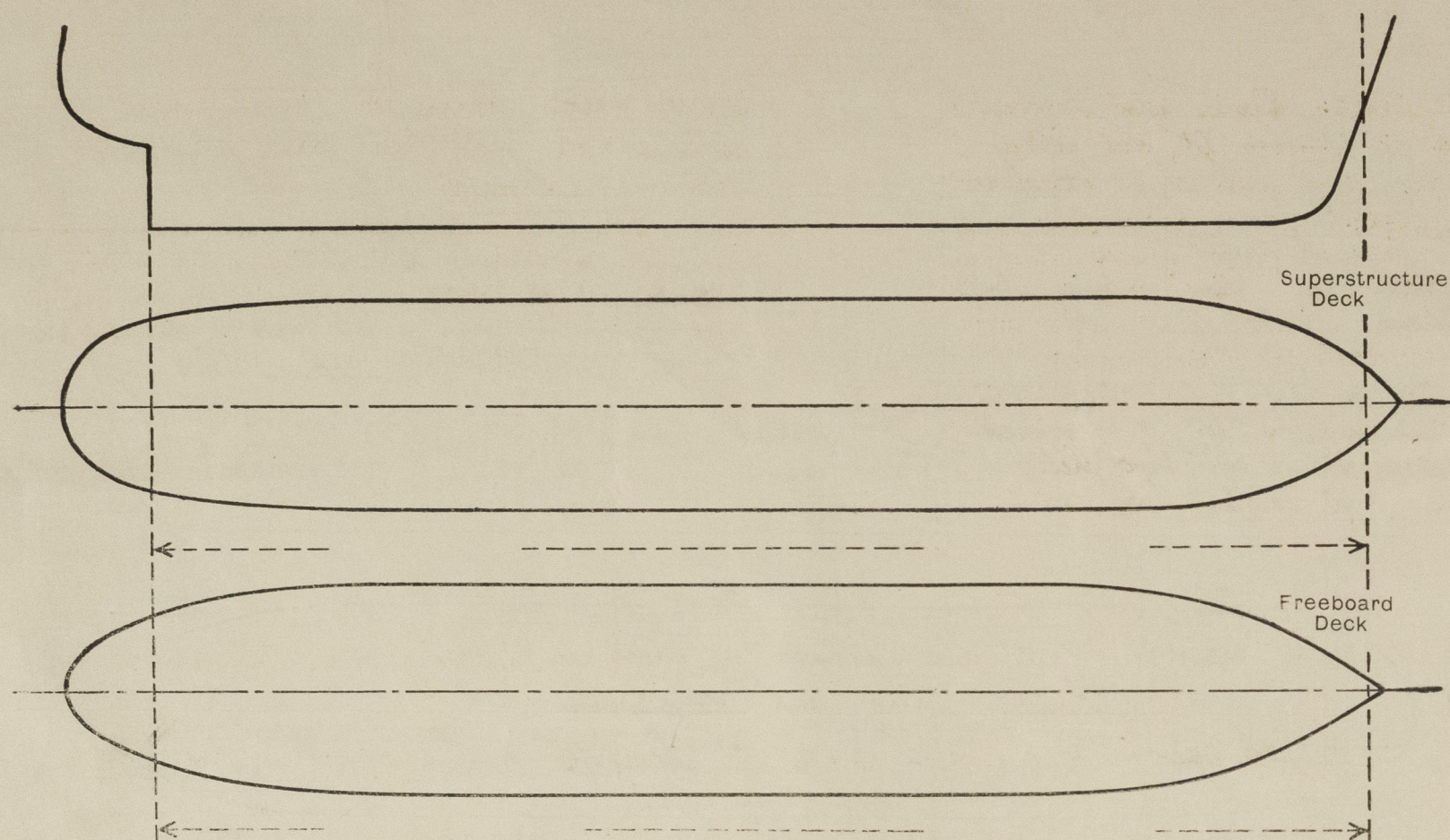
Particulars of Superstructures, Trunks, Casings, Deckhouses.

	Coaming	Plating	Stiffeners	Spacing	End Attachments of Stiffeners	Size of Openings	Height of Sills	Height of Casings
Poop Bulkhead50"	.44"	6" x 8" x ⁴⁰ / ₆₀ T _(inv)	30"	Welded top & bottom	2 @ 5'-0" x 36"	18"	8'-0"
Raised Quarter Deck Bulkhead ...	✓	✓	✓	✓	✓	✓	✓	✓
Bridge, After Bulkhead40"	.30"	3" x 2 1/2" x ^{1.0 A} / ₃₂ T _(inv)	24" - 30 1/2"	Sniped Welded top & bottom	2 @ 4'-1" x 37"	19"	7'-6"
Bridge, Forward Bulkhead50"	.50"	6" x 8 1/2" x ⁴⁴ / ₇₀ T _(inv)	30" & 31 1/2"	Sniped Welded top & bottom	5'-0" x 36"	18"	7'-6"
Forecastle Bulkhead38"	.30"	4" x 38" FLATS	29", 30"	Sniped	2 @ 4'-1" x 37"	19"	7'-6"
Trunk, Aft ...	✓	✓	✓	✓	✓	✓	✓	✓
Trunk, Forward ...	✓	✓	✓	✓	✓	✓	✓	✓
Exposed Machinery Casings on Freeboard or Raised Quarter Decks ...	✓	✓	✓	✓	✓	✓	✓	✓
Exposed Machinery Casings on Superstructure Decks ...	✓	✓	✓	✓	✓	✓	✓	✓
Machinery Casings within Superstructures not fitted with Class I Closing Appliances ...	✓	✓	✓	✓	✓	✓	✓	✓
Deckhouses on Flush Deck Ships38	.38	5" x ^{1.0 A} / ₃ x .38"	30"	Welded top & bottom	4'-3" x 27"	24"	8'-0"
PUMP RM ON UPPER DK AFT								

Particulars of Closing Appliances (state if capable of being manipulated from both sides).

Poop Bulkhead ...	2 hinged steel doors operated both sides. ✓
Raised Quarter Deck Bulkhead ...	✓
Bridge, After Bulkhead ...	2 - 3" stormboards in welded channels ✓
Bridge, Forward Bulkhead ...	1 - hinged steel door operated both sides. ✓
Forecastle Bulkhead ...	2 - hinged steel doors operated both sides ✓
Exposed Machinery Casings on Freeboard or Raised Quarter Decks ...	2 - 3" stormboards in welded channels ✓
Exposed Machinery Casings on Superstructure Decks ...	✓
Machinery Casings within Superstructures not fitted with Class I Closing Appliances ...	✓
Deckhouses on Flush Deck Ships ...	1 - hinged steel door operated both sides. ✓
PUMP RM ON UPPER DK AFT	

The following diagrams should be used to indicate the positions of cargo and coaling hatchways, gangway, cargo and coaling ports, ventilators, companionways, etc., which would affect the seaworthiness of the ship :—



Tunnel, vent workings & E.R. skylight strongly constructed of steel. Skylight fitted with hinged steel flaps with strong bulls-eye lights.

• none •

UPPER DK

- Particulars of Companionways:—
- (A) Companionway to Ford Pump Room, enclosed in steel casing, steel door operated both sides, 4'-3" x 27" - Sill 24"
- (B) Companionway to lift Pump Room, in steel deckhouse, steel door operated both sides, 4'-3" x 27" - Sill 24"

UPPER DK (Stayed to Pump Room top)
(Hft.) 2 - 24 1/2" dia C.V.s - Boommings - 13' 4" high x 44" dia
(Bord.) 1 - 10" dia C.V. " - 36" " x 32"
1 - 10" " C.V. " 10' 6" " x 32"
FREECAST DK (Stayed to Side Deck.)

FORECASTLE DK

- 3 - 10" dia C.V.s - Boatings 36" high x .32" dia
2 - 10" " C.V.s - " 36" " x .32" "
2 - 12" " C.V.s - " 36" " x .34" "
(with gas light closing appliance)

(C) BRIDGE D^K
Companionway to Bridge Space, enclosed in steel casing,
hinged 2" wood door operated both sides, 4'-6" x 27" - sill 18"

(D) POOP DECK.
Companionway to Poop Space, enclosed in steel casing, hinged 2"
wood doors operated both sides (marked thus - W), F.
in deckhouse sides, 5'-0" x 27" - sill 18"

POOP DECK

(D) POOP DECK.
Companionway to Poop Space, enclosed in steel casing, hinged 2" wood doors operated both sides (marked thus - X) P. in deckhouse sides, 5'-0" x 27", - sill 18"

BRIDGE DK

- 2 - 6" x 4" reverse ^{ble} C.V.s - Boatings 30" high x 30" thick
2 - 6" x 4" Swan Necks " 30" " x 30" "
POOP DR
8 - 6" x 4" reverse ^{ble} C.V.s - Boatings 30" high x 30" thick
9 - 6" x 4" Swan Necks - " 30" " x 30" "
2 - 12" x 4" " " - " 30" " x 34" "

All Bowl vents fitted with wood plugs & canvas covers,
Swan Neck vents. wood plugs only.

POOP DK

UPPER D ^K			
2 - 4" dia	Air Pipes 10'-6" to opening - Settling tanks Aft.	2 - 4" dia	air pipes 36" to opening. O.F. D.B. Tank.
2 - 4" " " "	10'-6" " " - Cofferdam Aft	1 - 2 1/2" " " "	36" " " - D.B. Feed Tank.
2 - 4" " " "	10'-6" " " - O.F. Bunkers.	2 - 2 1/2" " " "	36" " " - D.B. Cofferdam.
2 - 4" " " "	10'-6" " " - Cofferdam Ford.	2 - 4" " " "	36" " " - O.F. D.B. Tank
FORECASTLE D ^K .		2 - 6" " " "	30" " " - Aft Peak, Feed W.
2 - 6" dia	air pipes 18" to opening - Fore Peak.	1 - 3" " " "	18" " " - Rudder Trunk
3 - 4" " " "	36" " " - Deep Tanks.	1 - 2 1/2" " " "	18" " " - Stern Compit.

Air Pipes to O.F. tanks and Cofferdams fitted with safety tops with gauges - Canvas cover supplied.
All other air pipes fitted with wood plugs.

- None -

FORECASTLE SPACE: Drains thro' Forecastle bulkhead to Weather D^k, and fitted with brass plug with chain attachment

CHAIN LOCKER: Stores below Girdboard D^k and forward cargo spaces drained overboard thro' discharge in shell from steam ejector fitted with ~~one~~ S.O. valve and one N.R. valve.

UPPER DIS SCUFFERS - 4P. & 4S, 6" x 4"
cast steel scufflers, led thro' upper
Deck and then out thro' shell. →
6 P. & 6 S. 6" x 2" scuffer holes cut in
Stringer bar. ✓

BELOW FREEBOARD DECK:- Thompson's Welded Type. Cast steel frame, Naval brass deadlights
7-10" dia sidelights on shell of Steering Gear Compartment,
hinged lights and deadlights.

ABOVE FREEBOARD DECK :- POOP SIDE :- 13 - 10" dia sidelights hinged lights and deadlights
42 - 12" " " " " "

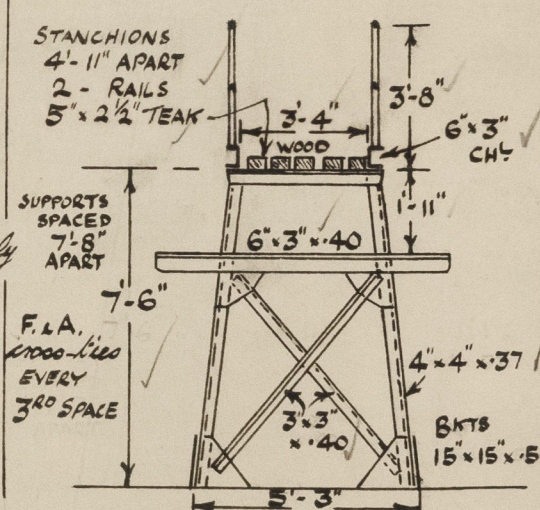
POOP FRONT:- 12 - 12" "

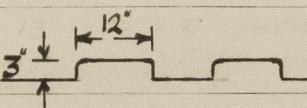
BRIDGE HOUSE - SIDES - 13-10" dia sidelights, hinged lights & deadlights
FRONT - 4-10" " " " "
AFT END - 6-10" " " " "

Vertical distance of Sill of lowest Side Scuttle above top of keel 45'-0" to sidelight in Steering Gear Comp't FR 8-9.

Particulars of Guard Rails:— UPPER DK:— Bulwark at Fide post 4'-0" high x .30" thick with 7" x 3½" x 40 B.A rail bar, 10" x 50 B.P. stiffro spaced 4'-6" & 4'-10" apart. Bulwark in way of crossover pipes aft of bridge 3'-9" high x .30", with 7" x 3½" x 40 B.A rail bar, 6" dia ½" hole on top, 10" x 50 B.P. stiffro spaced 4'-4" apart. Elsewhere:— 4 guardrails with stanchions 4'-0" high spaced 4'-6" apart. FORECASTLE, BRIDGE & POOP DECKS — 3 guardrails with stanchions 3'-6" high, spaced 5'1", 4' and 4'3" apart respectively.

gangway - see sketch →



	Length of Bulwark	Height of Bulwark	Size of Freeing Ports	Number each side	Area each side	Rule area each side
Aft of Bridge in way of Crosser Piles From G's le front ... Forward Well	29' 0"	4'-0"		13	✓	✓
	48'-0"	4'-0"	✓	✓	✓	✓

State position of each freeing port ... { After Well :—
(F. and A. position and height above deck edge) { Forward Well :—

State whether the freeing ports are fitted with shutters, bars, or rails, and give particulars of such :—

Additional area where sheer is less than standard.

© 2020
Lloyd's Register
Foundation

PARTICULARS OF PROTECTION TO OPENINGS, ETC.

HATCHWAYS ON FREEBOARD AND SUPERSTRUCTURE DECKS											
UPPER DK											
FILED											
POOP DK											
Description of Hatchway	STORES HATCH FORD	3 MANHOLES FOR TO C/D.	CARGO TANKS 30' OFF	2 MANHOLES AFT. C/D.	2 MANHOLES O.F. BUNKERS	2 MANHOLES SETTL. TANKS	CARGO HATCH	HATCH TO STEWARD ST.	HATCH TO STEER'G COMPT. S.	HATCH TO ROPE STORE P.	
Dimensions of Hatchway	30" x 30"	23 1/2" x 18" radius ends	4'-0" DIA	23 1/2" x 18" radius ends	23 1/2" x 18" radius ends	23 1/2" x 18" radius ends	9'-0" x 9'-0"	27" x 28"	31" dia	24" dia	
COAMINGS	Height above Deck	12" x 3 1/2" x 44" x 30" 50 C	10" x 75" THK	12" x 3 1/2" x 3 1/2" x 30" 50 C	12" x 3 1/2" x 3 1/2" x 30" 50 C	12" x 3 1/2" x 3 1/2" x 30" 50 C	36" x 50	18" x 44" thk	18" x 44" thk	18" x 44" thk	
	Thickness	8 A.	one flg cut to 1 1/4" & welded to deck	one flg cut to 1 1/4" & welded to deck	one flg cut to 1 1/4" & welded to deck	one flg cut to 1 1/4" & welded to deck	7" x 3" x 40 BA HORIZ. STAY 3 1/2" FLG				
	Stiffeners										
	Brackets, Stays										
HATCH BEAMS	Number										
	Spacing										
	Scantling and Sketch										
	Bearing Surface										
FORE AND AFTERS	Number										
	Spacing										
	Unsupported Lengths										
	Scantling* and Sketch										
HATCH COVERS	Material	44 thk hinged steel cover	40" thick "EASIFIT" steel cover hinged	40" thick steel cover hinged	40" thick steel cover hinged	40" thick steel cover hinged	44 thk steel cover	44 thk hinged steel cover	32" thick steel hinged framed cover	44" hinged steel cover	
	Thickness						6" x 3 1/2" x 36" 1.0 A. stiff				
	How fitted	steel cover with packing	40" thick with packing 3 1/2" x 3 1/2"	with packing 28-3/4"	with packing 28-3/4"	with packing 28-3/4"	W.T. Packing Hinged cover with 20 1/8" toggles	packing	packing	packing	
	Bearing Surface										
Spacing of Cleats		7 toggles	28-3/4" flat cleats & 28-3/4" O.T. Packing 3 toggles					7 toggles	4 toggles	4 toggles	
Number of Tarpaulins											
*Are wood fore and afters steel shod at all bearing surfaces? <input checked="" type="checkbox"/> Are battens and wedges efficient and in good condition? <input checked="" type="checkbox"/> Are tarpaulins in good condition and in accordance with rule requirements? <input checked="" type="checkbox"/> Are lashings provided in accordance with rule requirements? <input checked="" type="checkbox"/>											

Particulars of any special features:—

Small access hatch on steel cover of Forecastle Deck hatch, 18" dia 7" x 44 thk coaming, 50" steel hinged cover with 4 - 5/8" toggles and W.T. packing.



© 2020

Lloyd's Register Foundation