

COPY

Kobe Rpt. 8

No. 10655

LLOYD'S REGISTER OF SHIPPING

FOUNDED 1760

RE - CONSTITUTED 1834

No. LLST-80022

International Load Line Certificate

Issued under the authorisation of the Government of the United Kingdom of Great Britain and Northern Ireland in accordance with the provisions of the International Load Line Convention, 1930

Ship "STANVAC MANILA"

Port of Registry London

Gross tonnage 10686

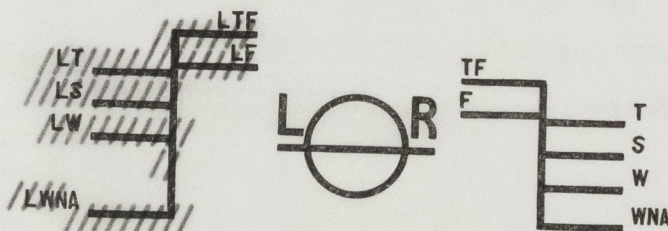
Signal Letters G Z S L

	ORDINARY CARGO FREEBOARDS.			TIMBER DECK CARGO FREEBOARDS.	
	Marked.	Freeboard from Deckline.	Load Line.	Marked.	Freeboard from Deckline.
tropical	T	8'-7 $\frac{1}{2}$ "	7 $\frac{1}{2}$ " above S	LT	-
summer	S	9'-2 $\frac{3}{4}$ "	centre of disc	LS	-
winter	W	9'-10 $\frac{1}{4}$ "	7 $\frac{1}{2}$ " below S	LW	-
winter in North Atlantic	WNA	10'-3 $\frac{1}{4}$ "	12 $\frac{1}{2}$ " below S	LWNA	-

allowance for fresh water for all freeboards 8 $\frac{1}{2}$ ins.

the upper edge of the deckline from which these freeboards are measured is -

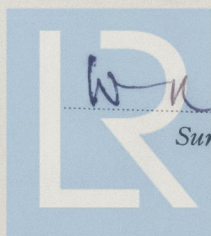
above the top of the steel upper deck at side



is to certify that this ship has been surveyed and the freeboards and load lines shown above have been assigned in accordance with the Convention.

is certificate remains in force until 30th July, 1962.

ed at Kobe on the 16th day of June, 1962.



© 2020

W.N.G. McCulloch

Surveyor to Lloyd's Register.

W.N.G. McCulloch

Lloyd's Register Foundation

005318-005320-0053