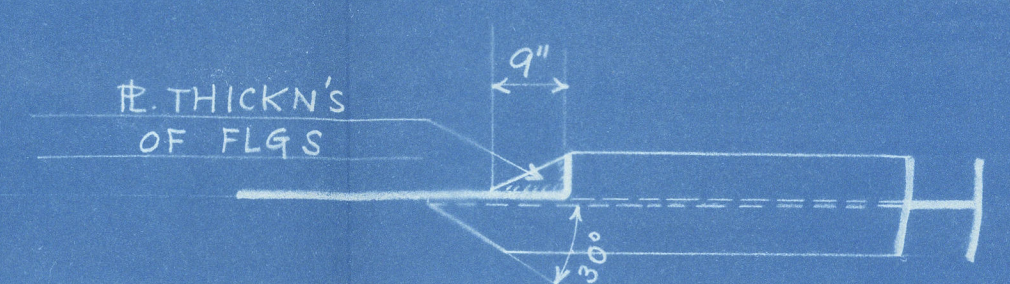
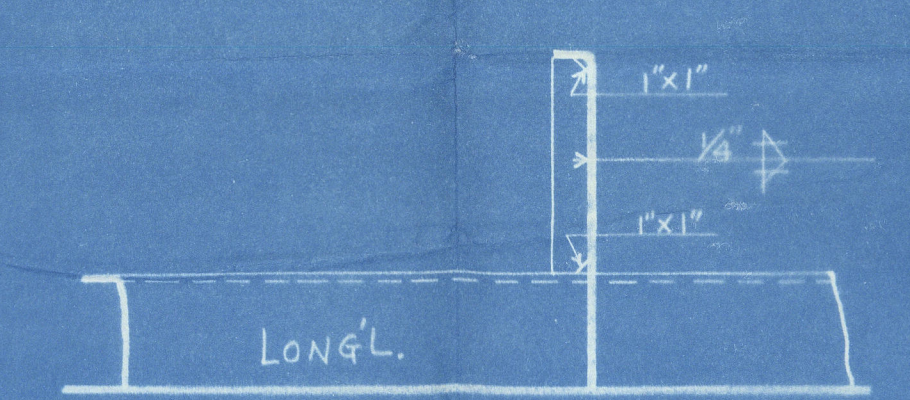


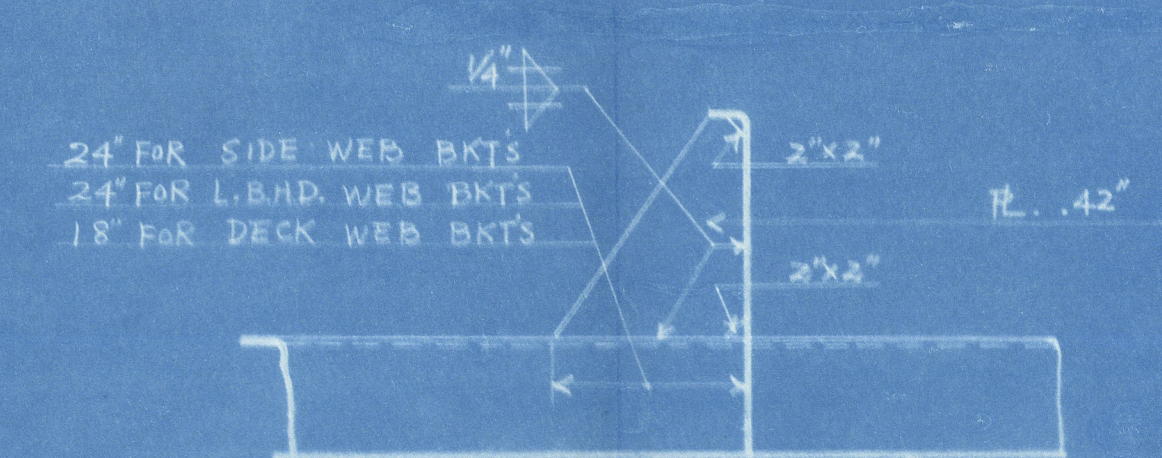
SECT. A-A.



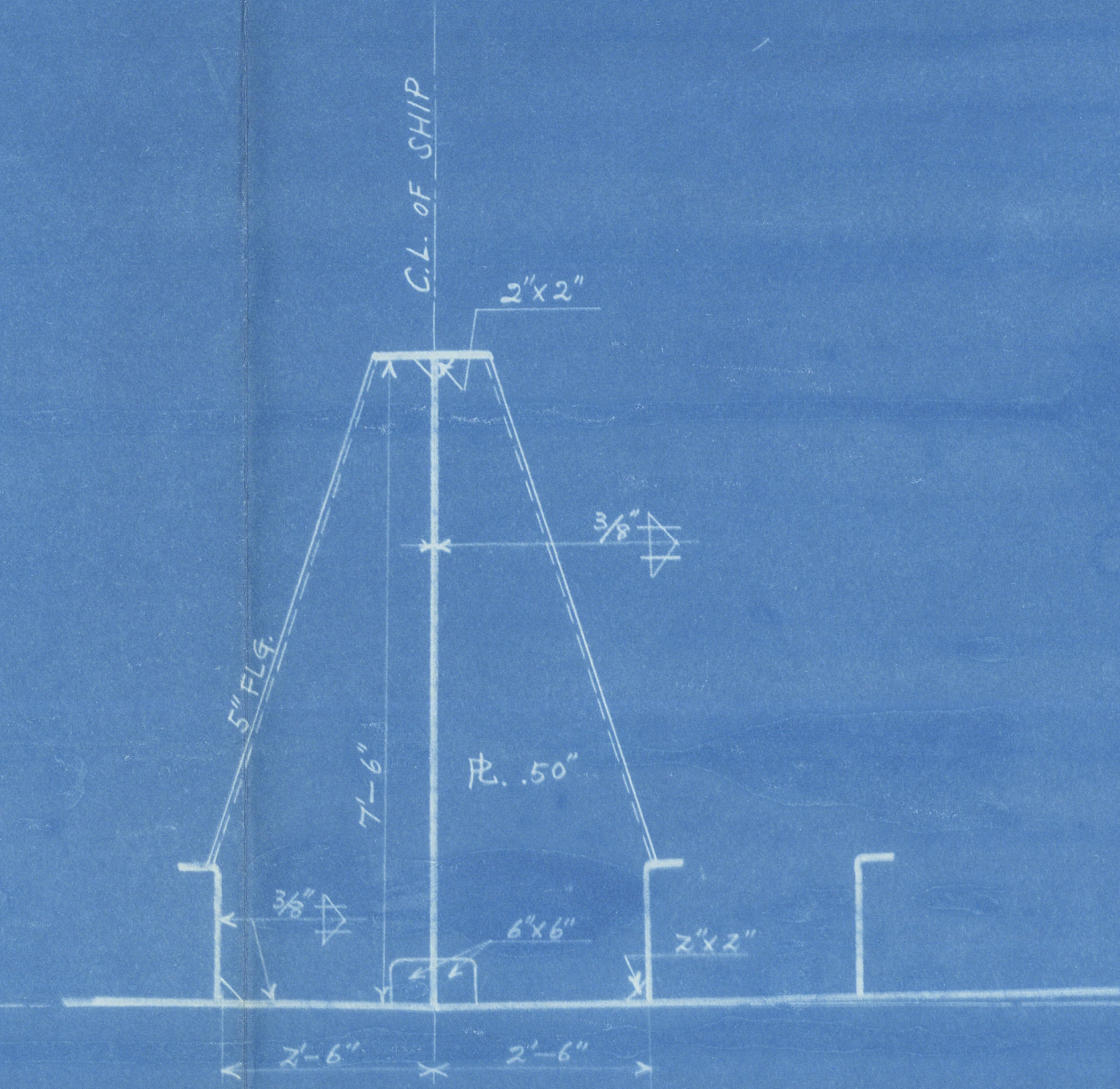
TYPICAL CB SEC. CONN.
TO WEB STIFFERS.



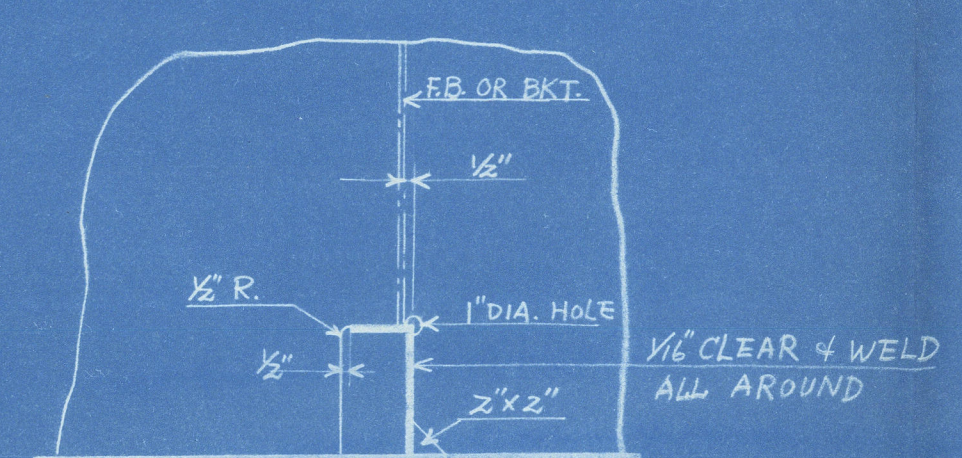
TYPICAL DETAIL OF
FLAT BAR STIFFERS



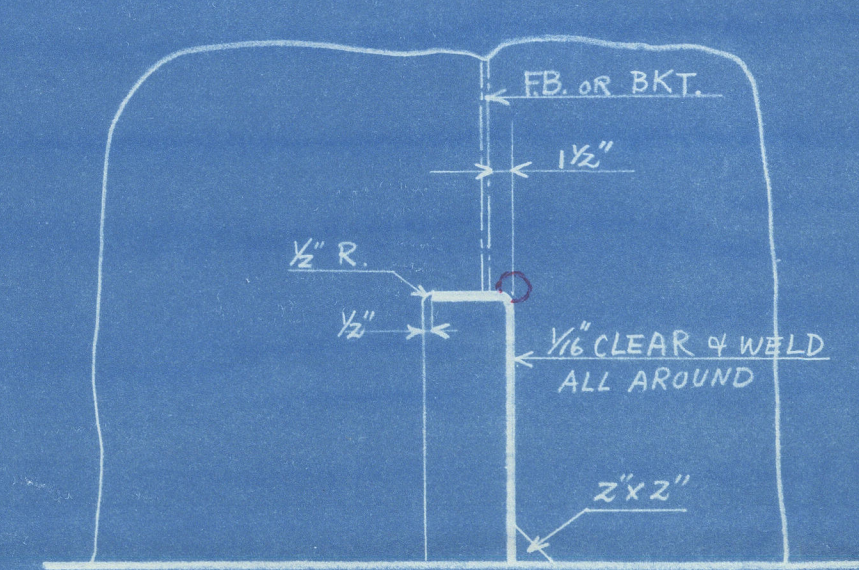
TYPICAL DETAIL OF
WEB TRIPPING BKTS



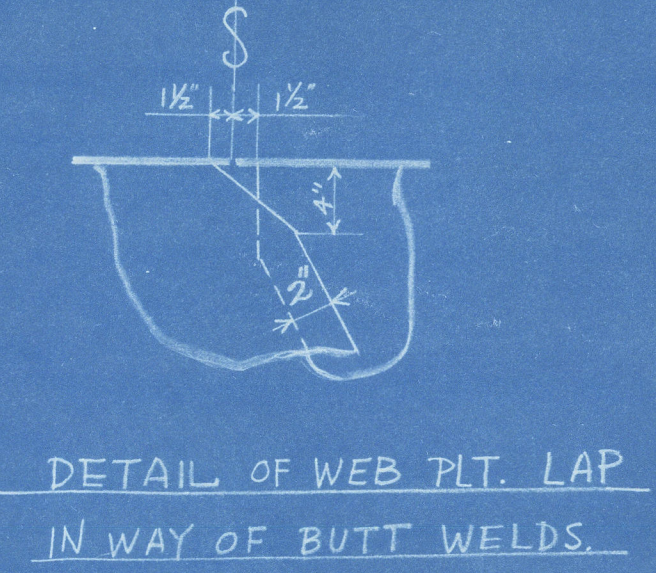
ADDITIONAL DOCKING BKTS
(TO BE FITTED AT EVERY 3 FRAMES TANKS #2 TO #9)



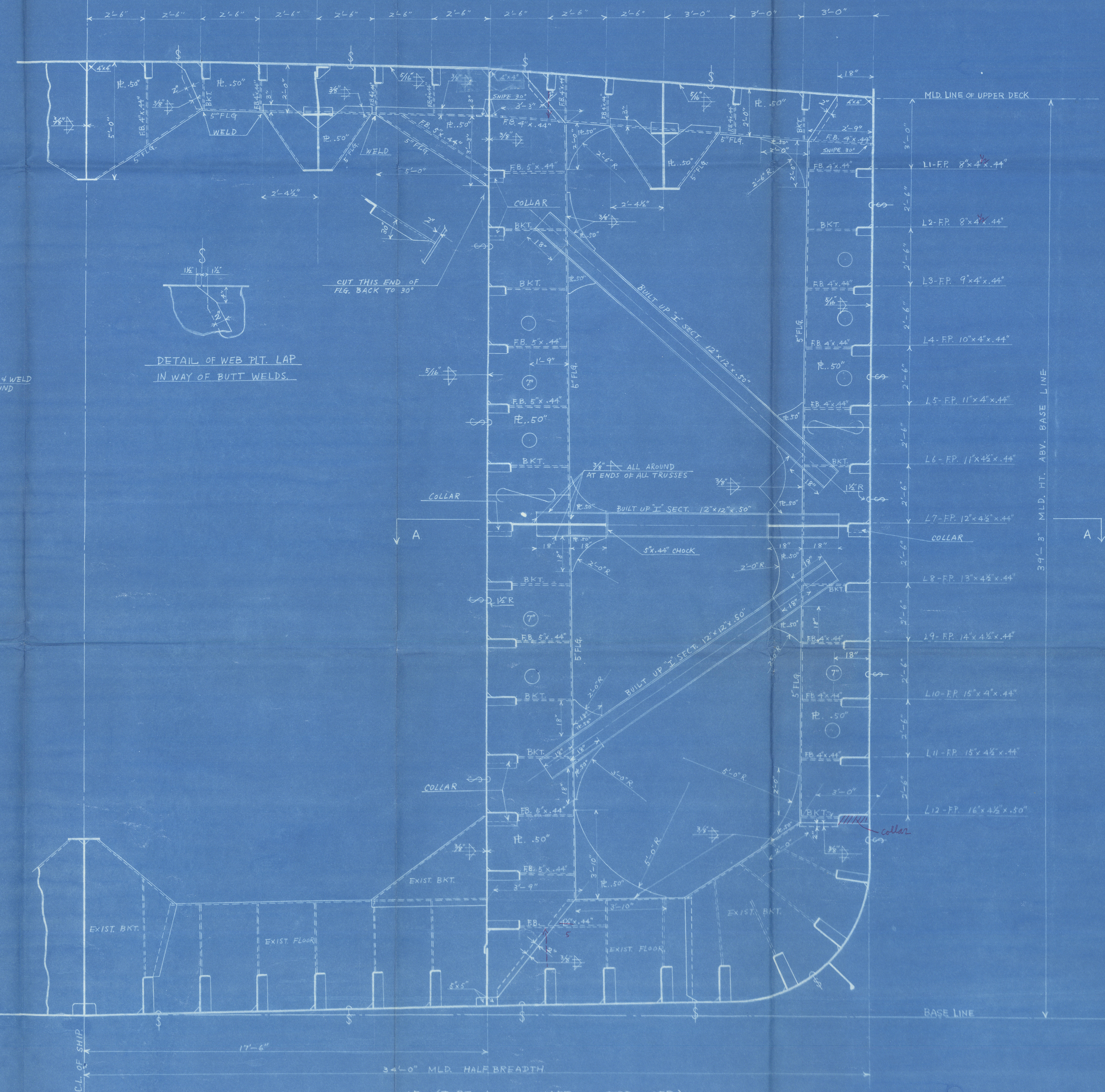
DETAIL OF LONGL CUTOUTS
(IN CASE OF ORD ANGLE)



DETAIL OF LONGL CUTOUTS
(IN CASE OF FLG. PLATE)



DETAIL OF WEB FILT. LAP
IN WAY OF BUTT WELDS.



TRANSVERSE WEB FRAME #57 (PORT LOOKING AFT, STBD. OPP)
(SIMILAR WEB FR #48, 49, 51, 52, 54, 55, 57, 58, 60, 61, 63, 64, 66, 67, 69 & 70)

STANVAC MANILA

TRANSV. WEB FRAME 7

SCALE 1/2" = 1'-0"
DRAWN BY KOHBA
TRACED BY
CHECKED BY T. Kono
DATE MAR. 10, 1956
APPROVED BY
NIPPON STEEL TUBE CO. LTD.
ASANO DOCK YARD
JOB NO. 1 DR. NO. B-2137
APPROVED BY

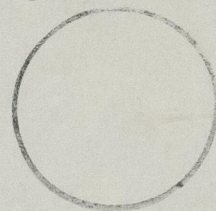
TO L.R. APPROVAL

ASANO DOCK YARD
MAR. 1956
Lloyd's Register
Foundation

RECORDS DEPT.
LONDON

9

RECORDS DEPT.
LONDON.



Trans. web frame,

SS/	STANUAC MANILA
is certificate	DWS
Companies	YOKOHAMA
REPORT No.	2022
to tel	SEP. 17. 1956



© 2020

Lloyd's Register
Foundation

005318-005220-0044