

Revised 11/1/46

# S.S. HILARY

## PROPOSED OIL FUEL BUNKERS

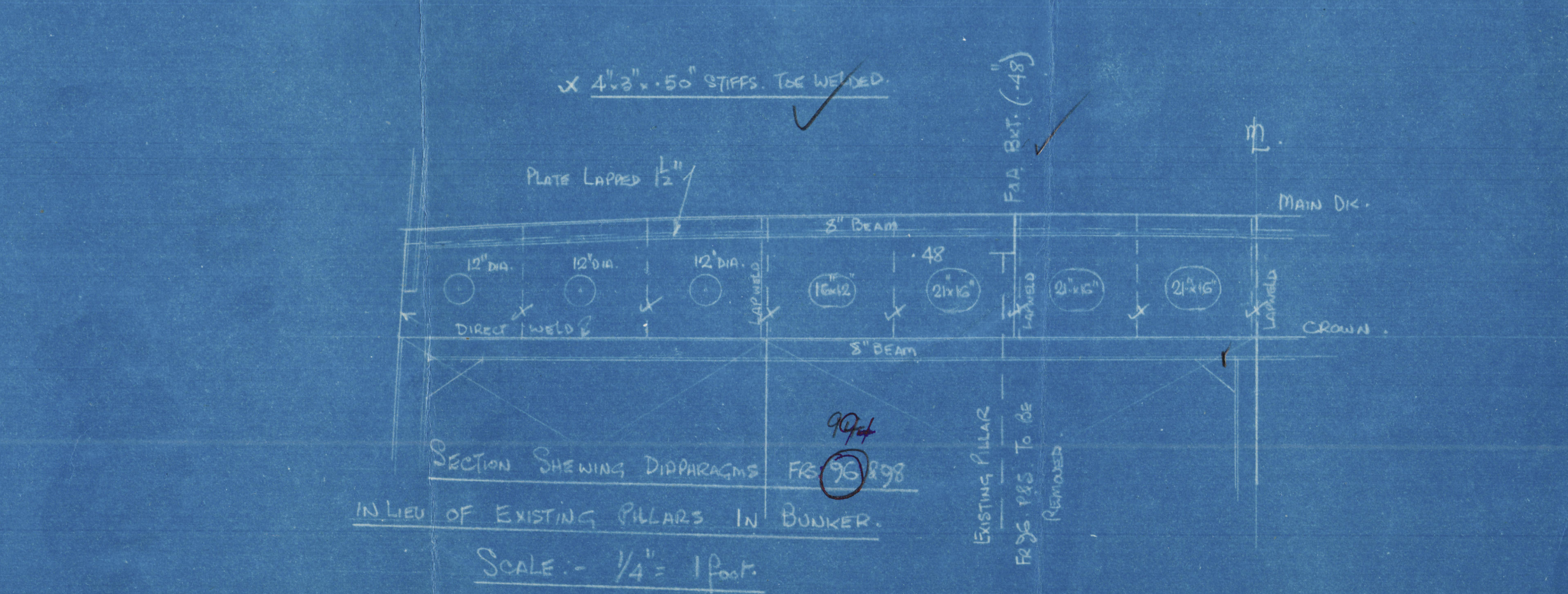
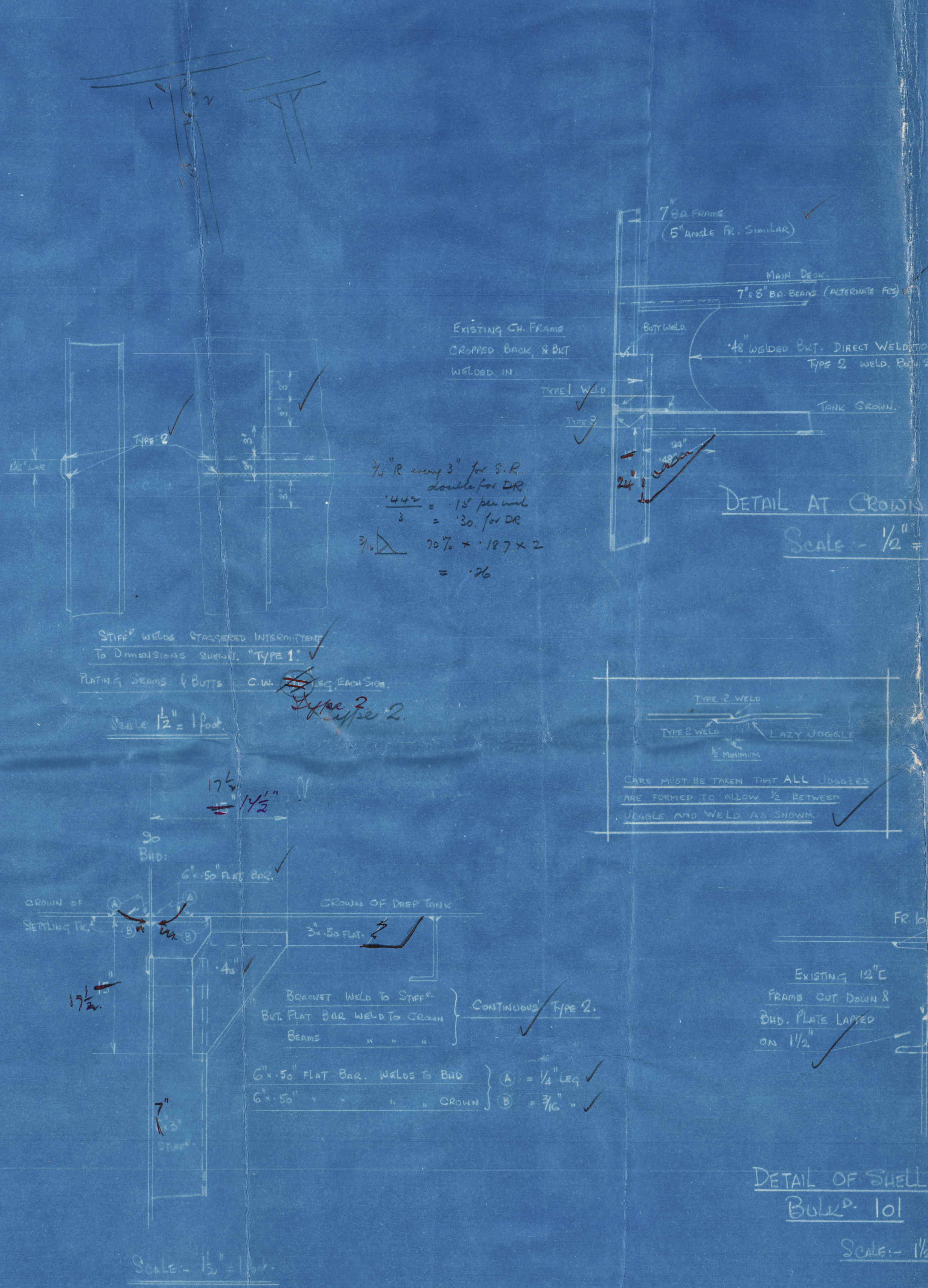
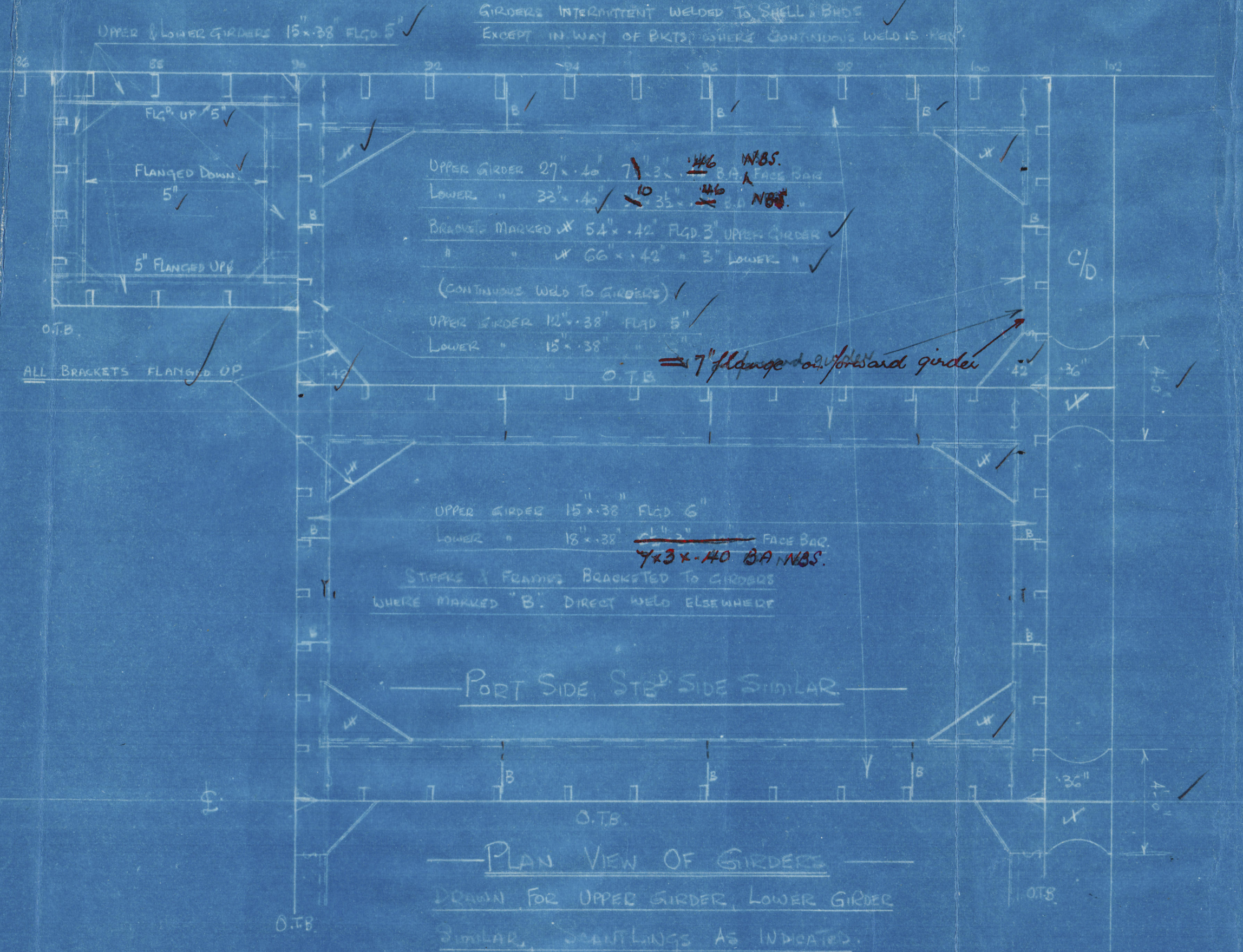
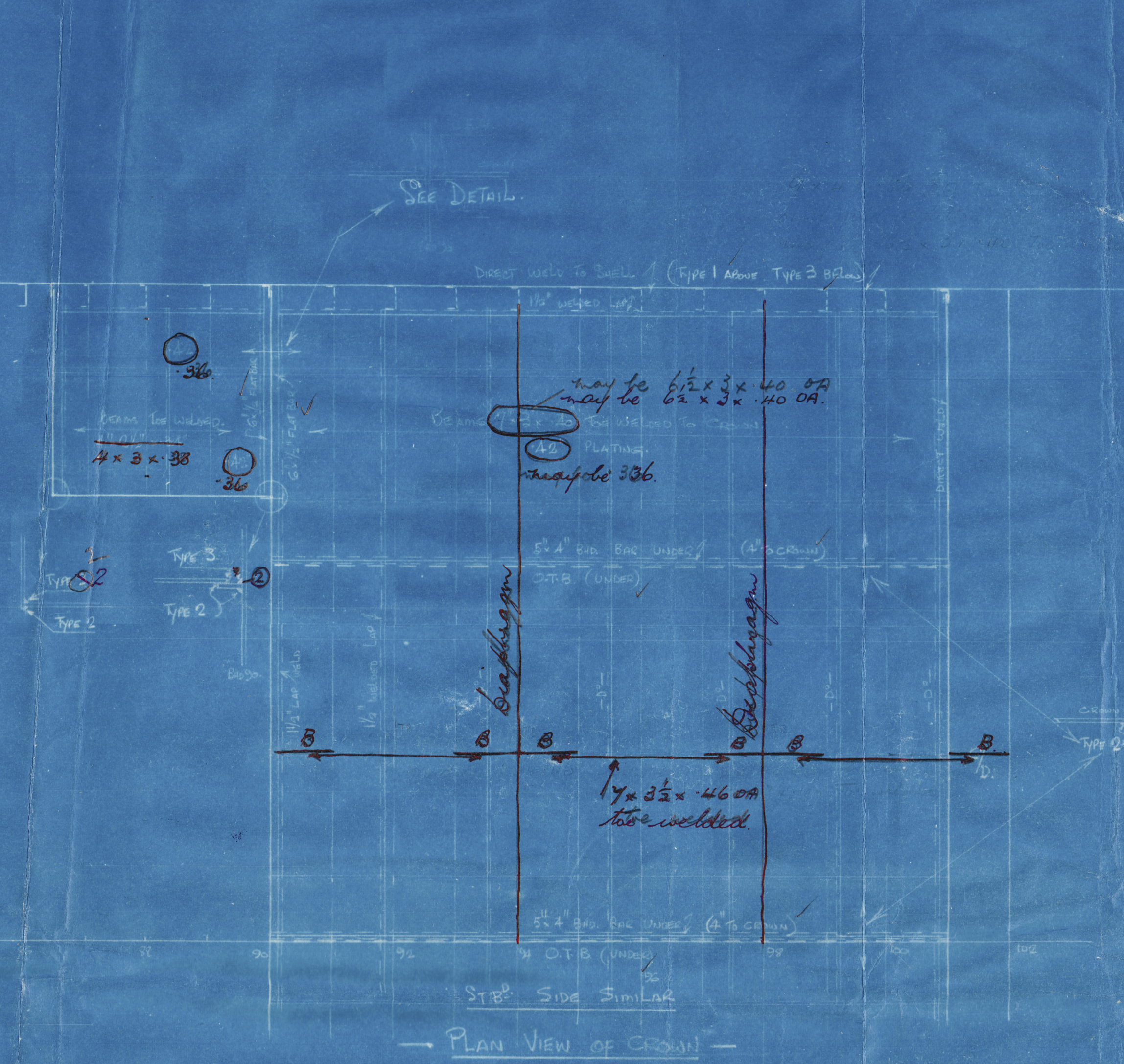
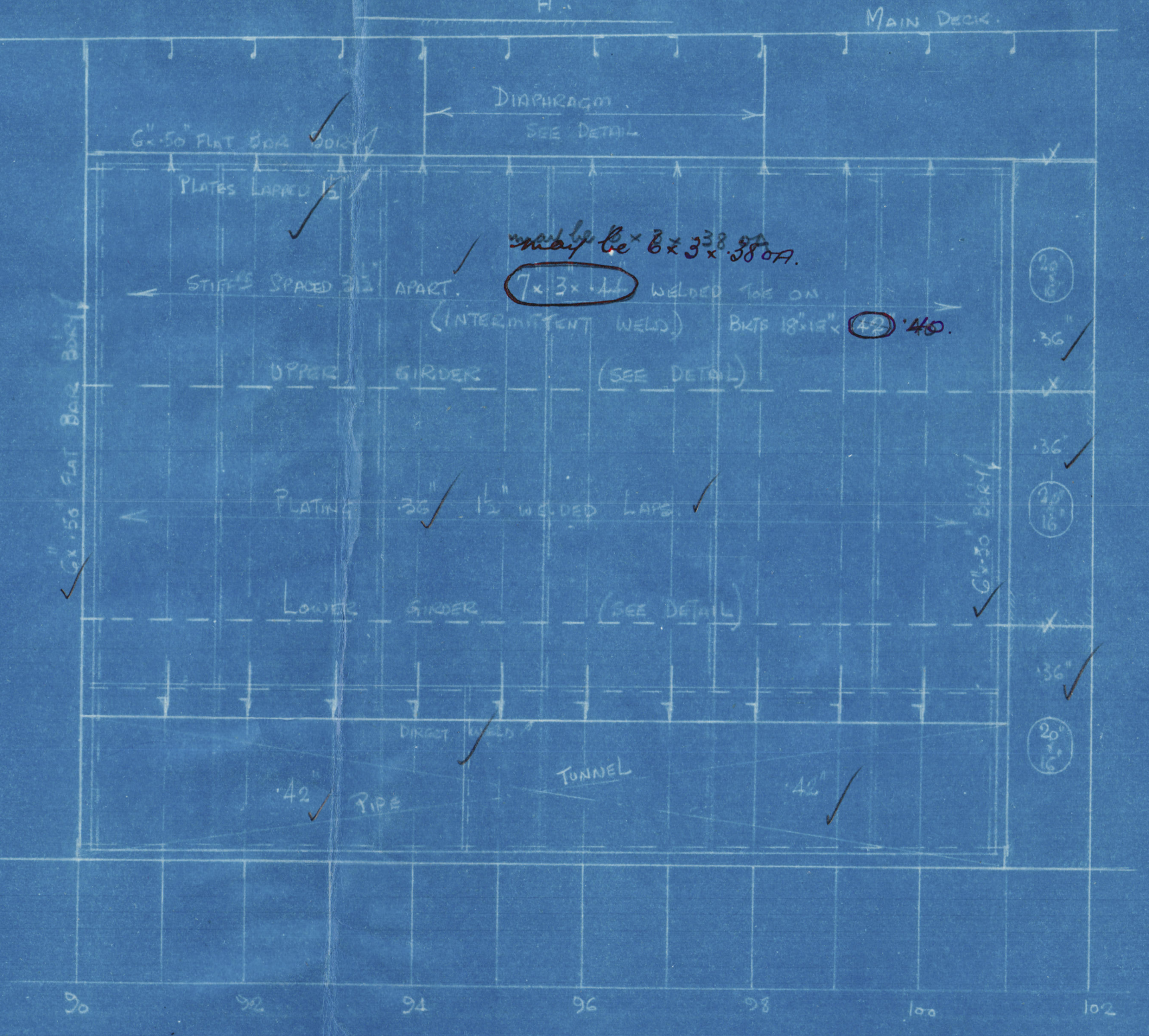
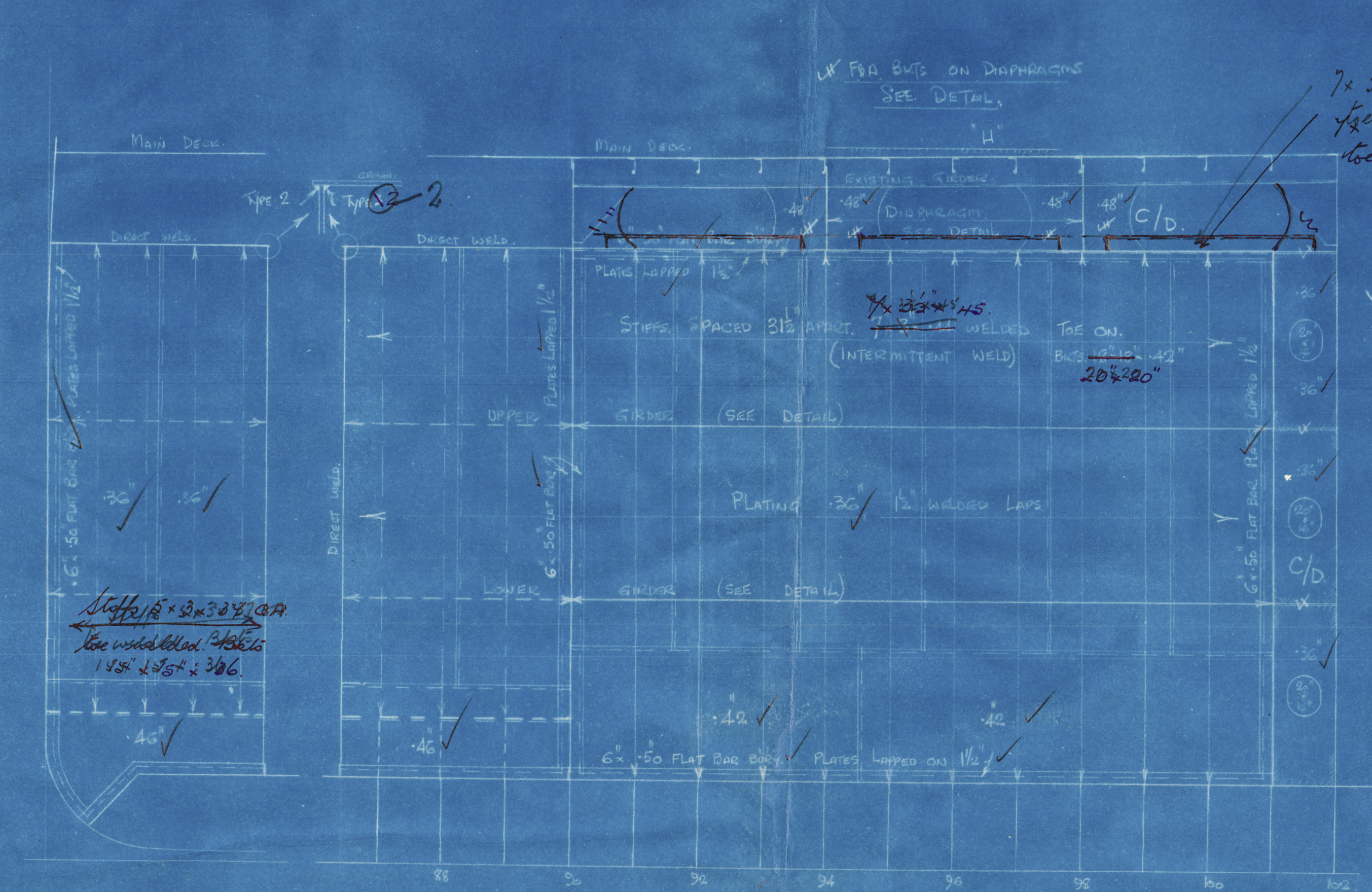
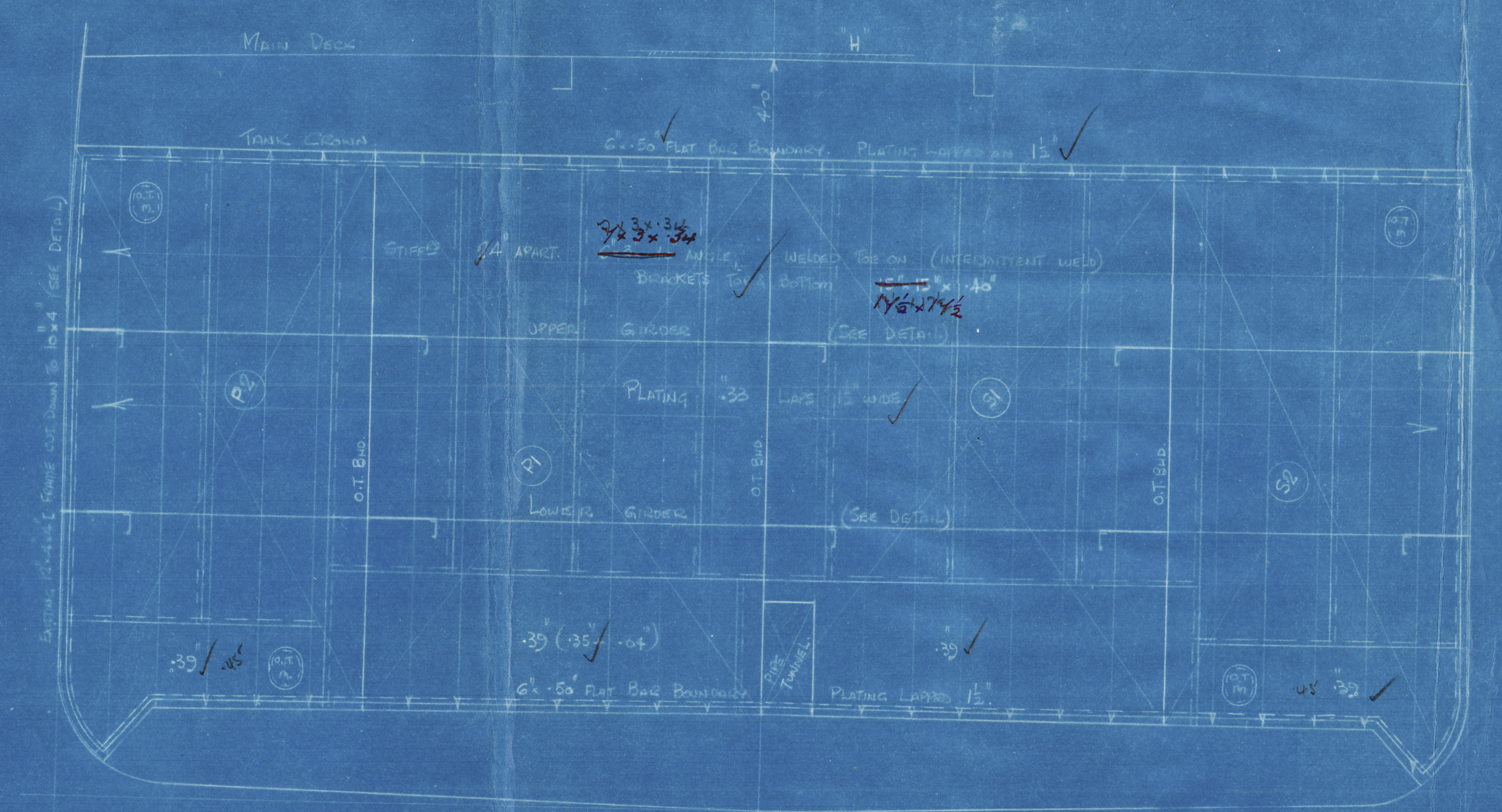
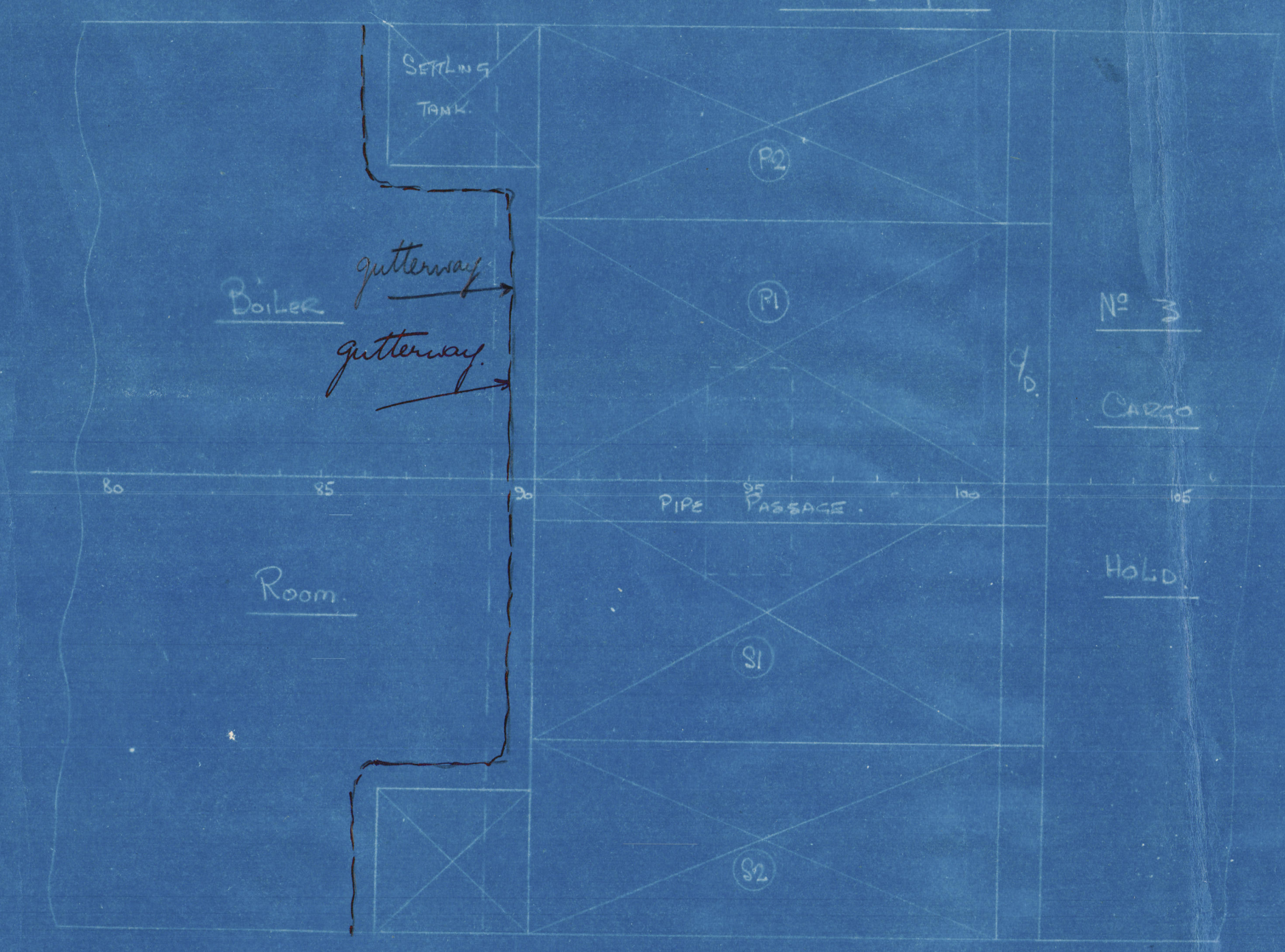
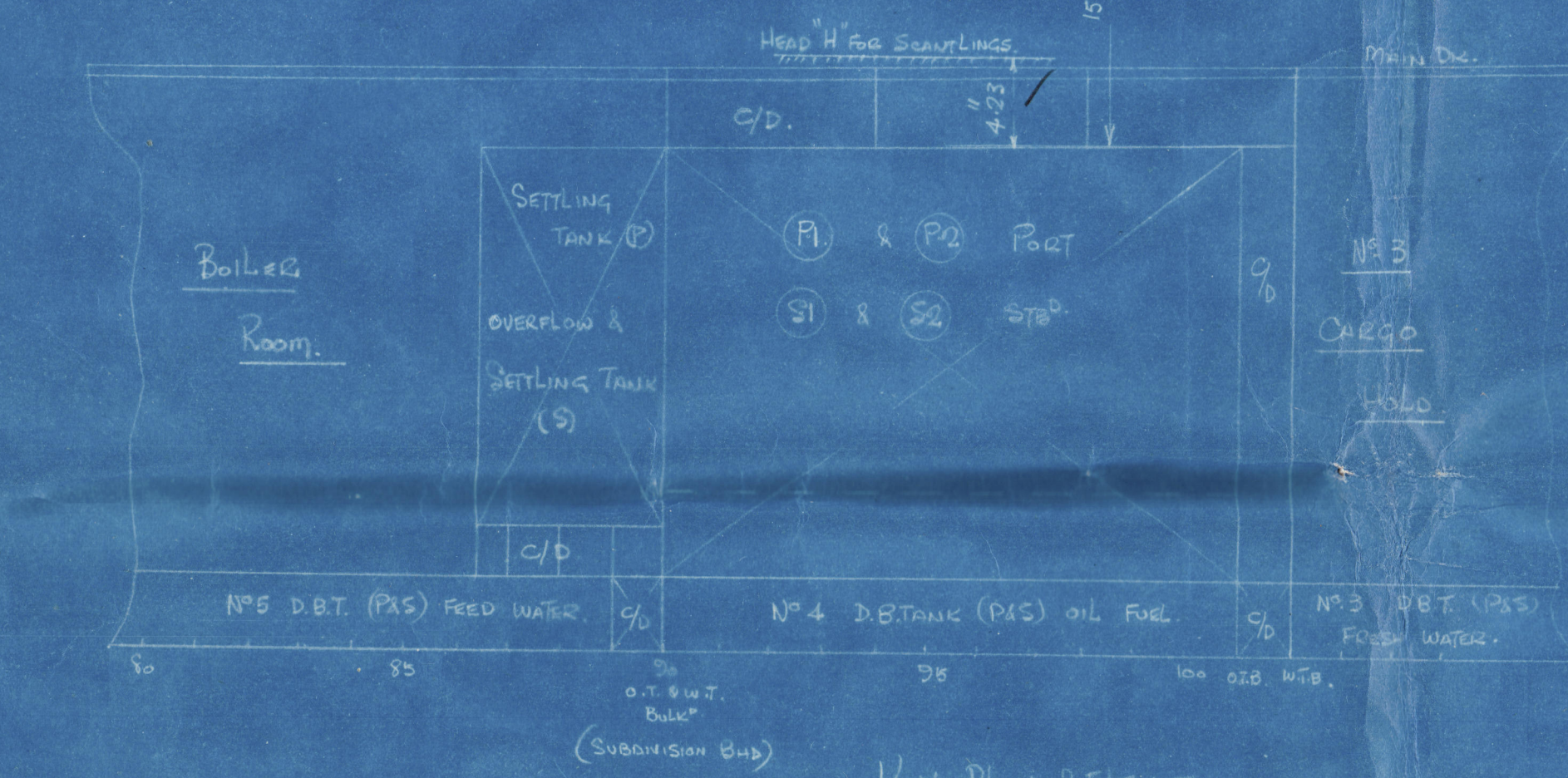
SCALE: 1/4" = One foot & as shown

All Welding To Lloyd's Latest Rules & Regs

Flash Point of Oil Fuel Above 150°F

14 JUN 1946  
REPAIR DEPT.

Depth of Tank = 21' 2"  
30% = 6' 3 1/2" = 6' 3 1/2" (D)  
1/2" difference between D & H of shell  
= 1/2 (8.00 - 6.33) = 0.835 = 8' 4 1/8"  
overlaid height



W.T.  
22.7.46



Alamy

005307-005310-0031



© 2021

Royce's Register  
Foundation