

S.S. "HILARY"

SSIMS  
11. ACCOUNTANT L.V. Rpt. No. 148002  
Date 1.58  
SUB

# PROPOSED ARRANGEMENT TO INCREASE LENGTH OF NO. 2 HATCH

SCALE: AS SHOWN

## NOTES

NO. 2 & 3 HATCHES ON UPPER DK. TO BE MADE AS ONE HOLD VENTILATORS IN BETWEEN NO. 2 & 3 HATCHES TO BE MOVED OUTBOARD P.S.

NO. 2 HATCH ON 2<sup>ND</sup> DECK INCREASED IN LENGTH. *Position to be 8' 6" from starboard & deck reinforcement plate*

MINOR BULKHEAD ON 2<sup>ND</sup> DECK CROPPED BETWEEN 2 & 3 HATCHES.

NO. 2 HATCH INCREASED IN LENGTH ON LOWER DECK.

ALL WELDING TO BE CARRIED OUT TO LLOYD'S REQUIREMENTS

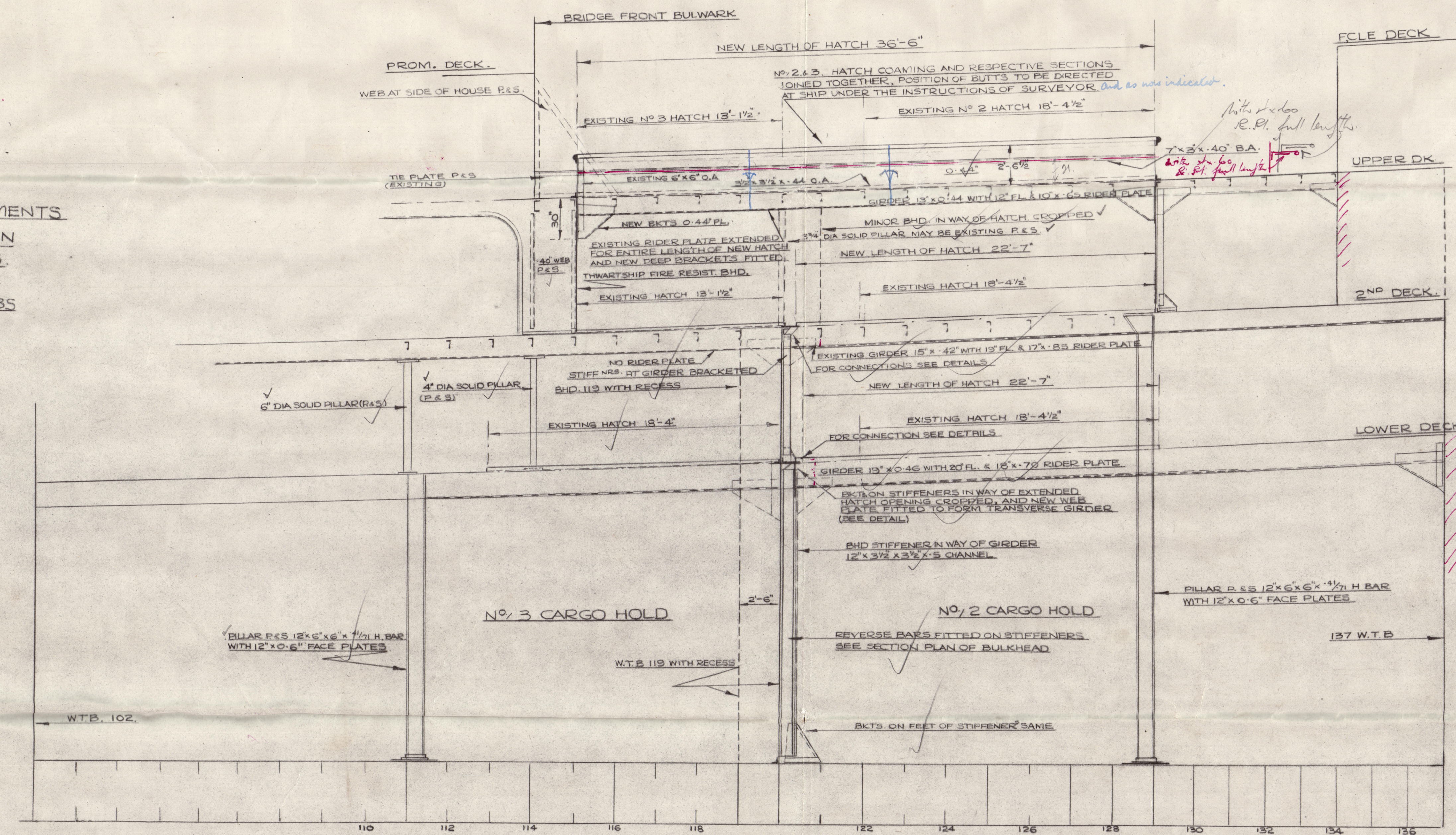
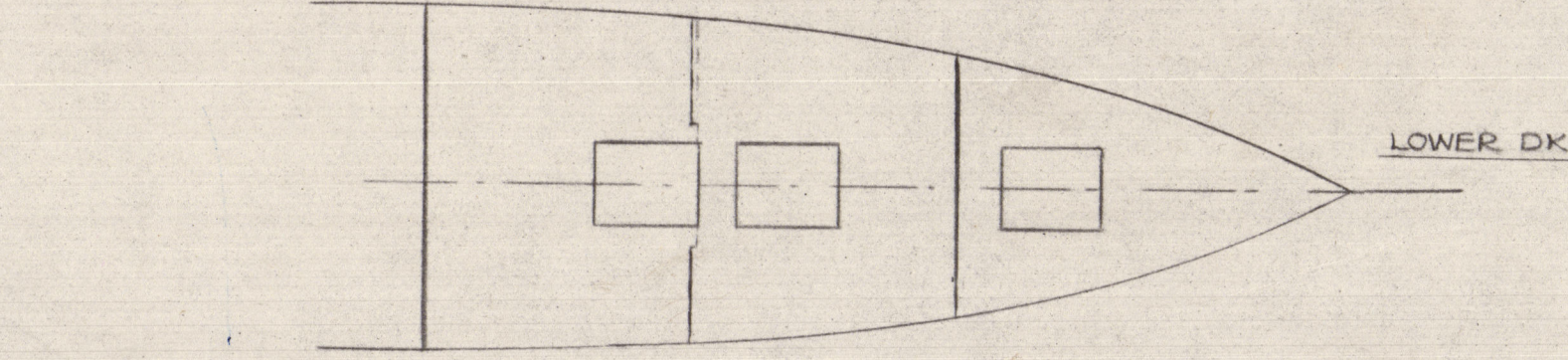
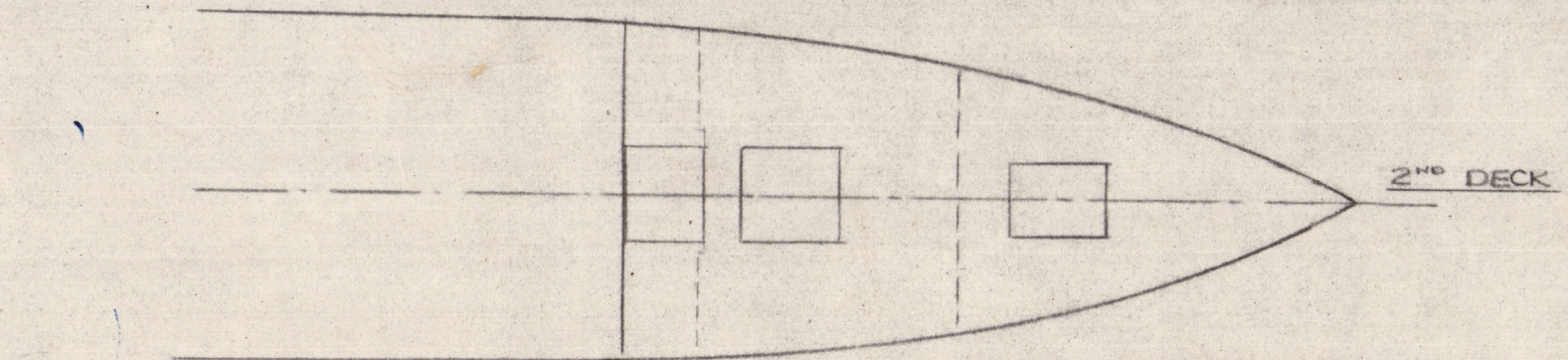
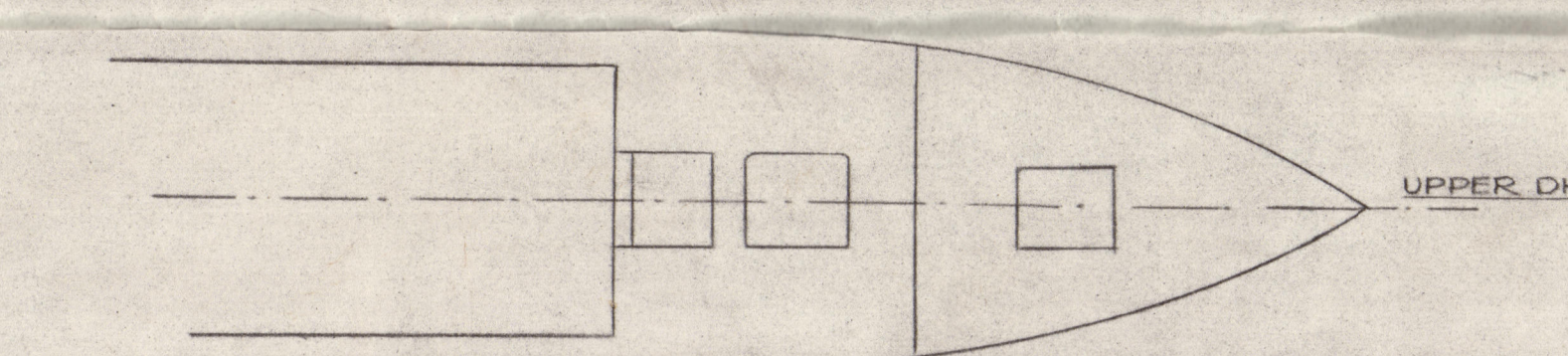
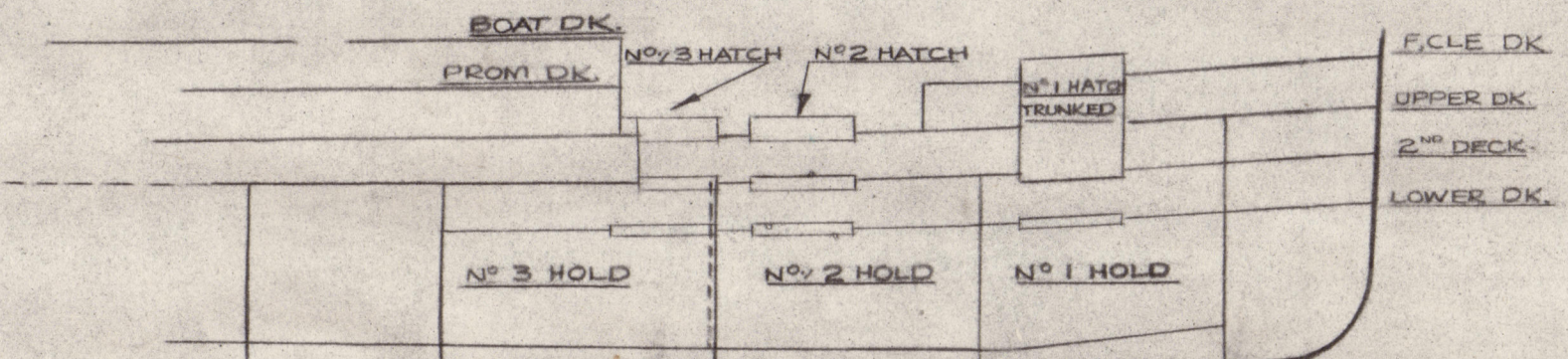
2 NEW HATCH WEB BEAMS REQUIRED FOR UPPER DK. (SIMILAR IN CONSTRUCTION TO EXISTING ONES) & ASSOCIATE HATCH COVERS.

CARRIER WEBS TO BE FITTED FOR ABOVE WEB BEAMS

1 NEW HATCH WEB BEAM REQUIRED FOR LOWER DK & CARRIER WEBS

*NOTE - Before work is commenced special care to be taken to ensure that existing structure is as shown on this plan.*

KEY PLAN



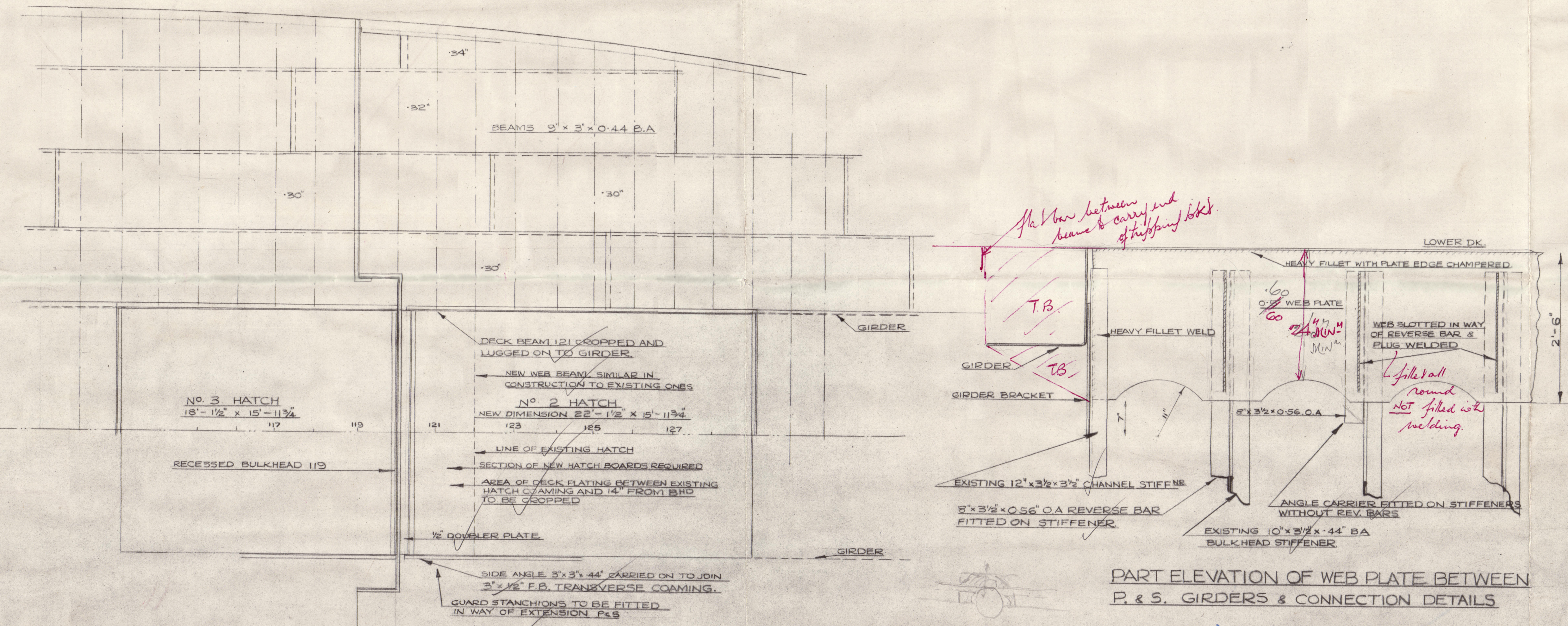
ELEVATION AT C.L. THROUGH NO. 1 & 2 HATCHES

SCALE: 1/4" = 1 FOOT

## PART PLAN OF LOWER DK. AT BHD. 119.

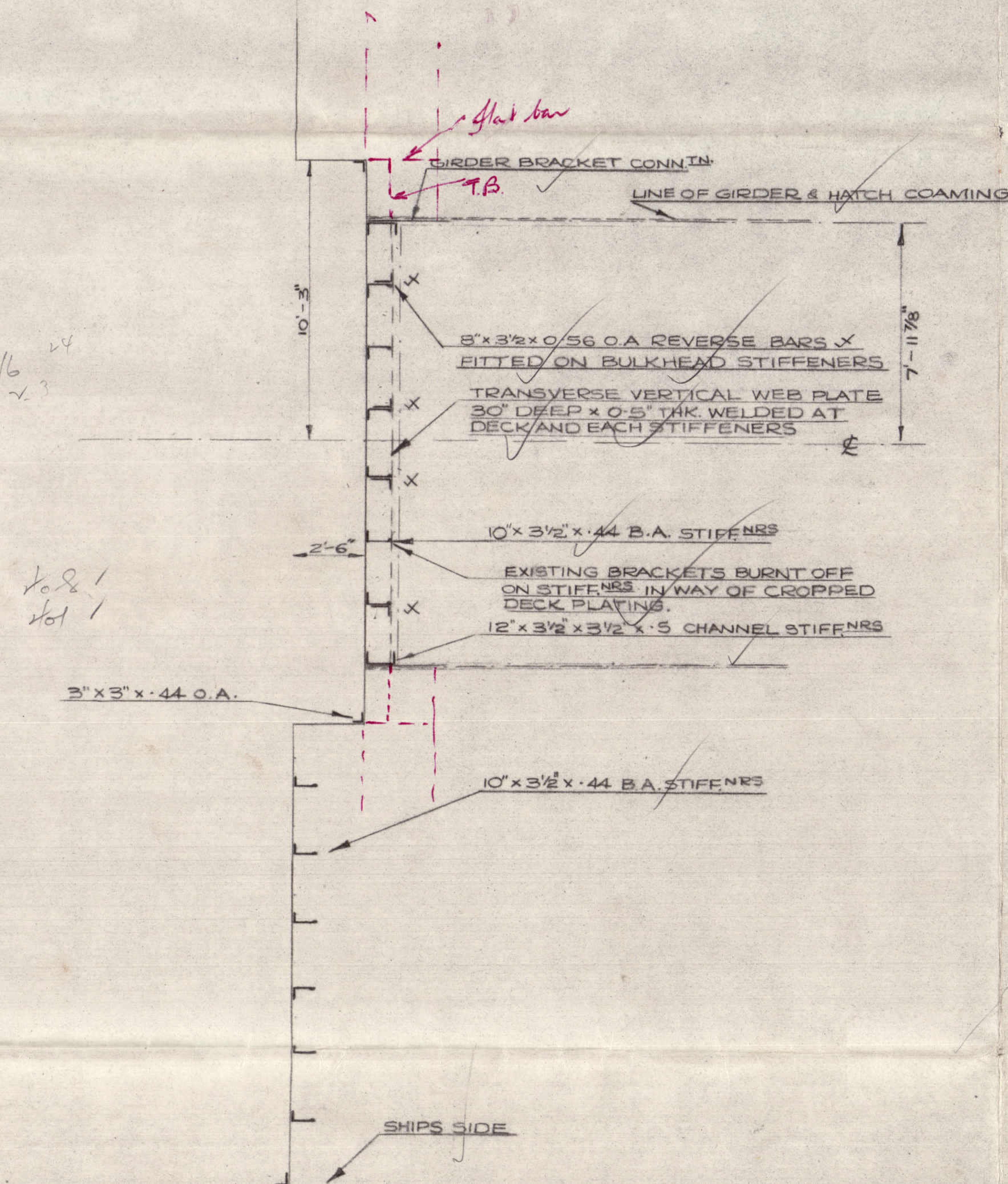
SCALE: 1/4" = 1 FT.

NOTE: 2<sup>ND</sup> DECK SIMILAR IN WAY OF HATCHES

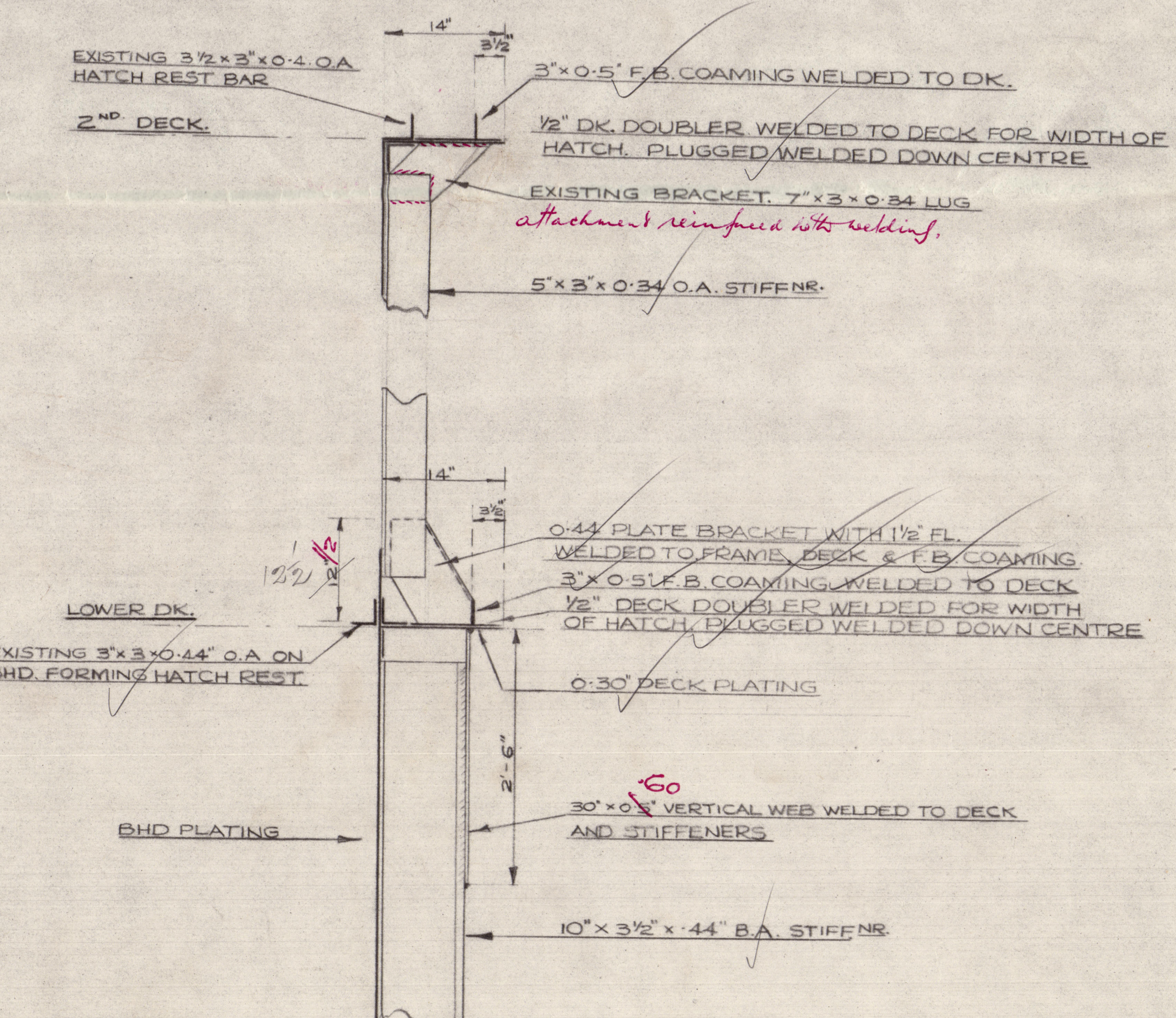


SECTION THRO. W.T.B. 119.

SCALE: 1/4" = 1 FT.



PART ELEVATION OF WEB PLATE BETWEEN P. & S. GIRDERS & CONNECTION DETAILS



DETAIL OF CONN. TNS AT LOWER & 2<sup>ND</sup> DECKS

