

Lloyd's Register of Shipping.

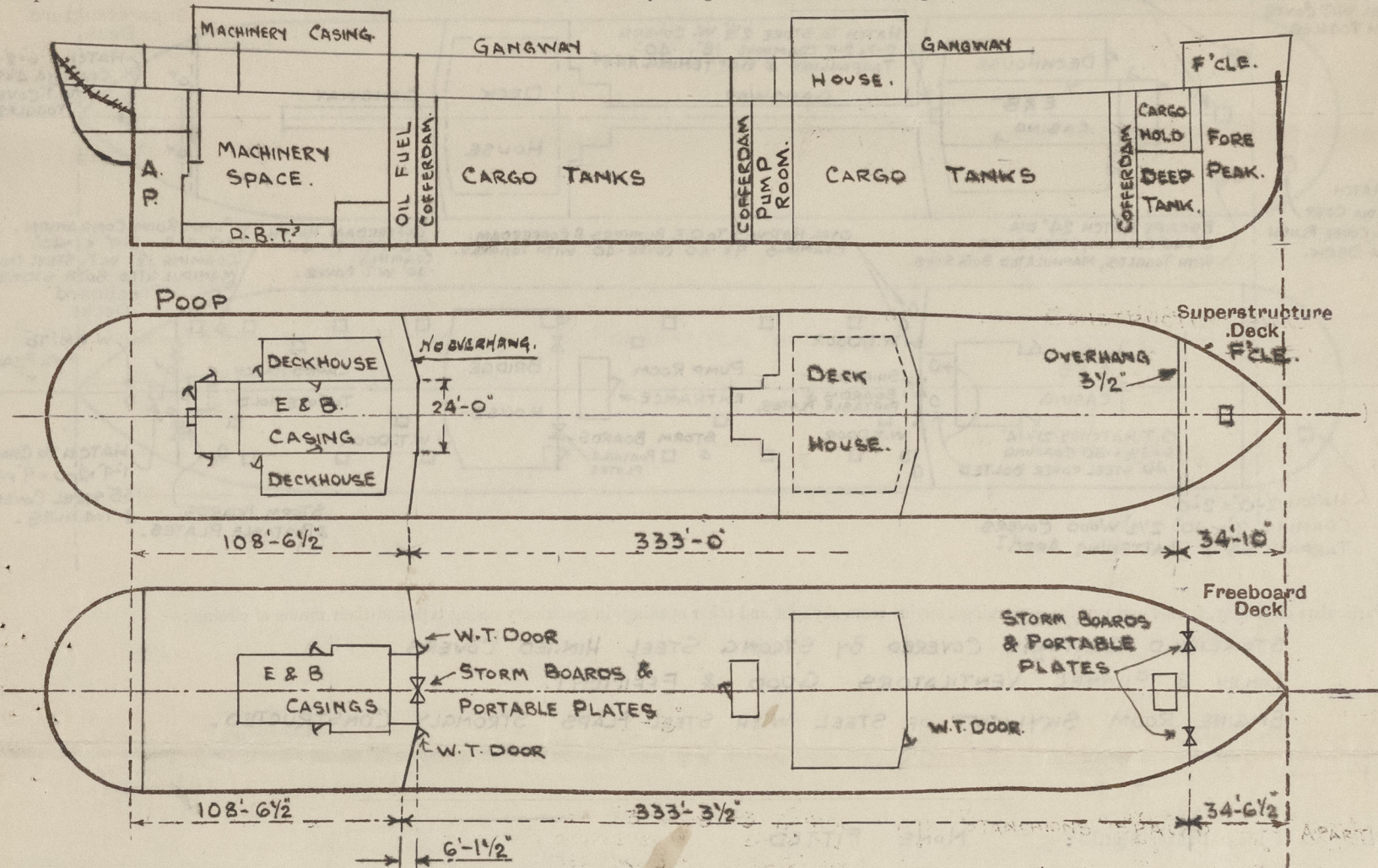
SURVEYS FOR FREEBOARD.

(CONDITIONS OF ASSIGNMENT.)

No. 14383.

FURNESS S.B. CO. LTD. No 350;
 Ship's Name S/S. "EMPIRE COBBETT" Port of Survey MIDDLESBROUGH
 Official Number 164861 Surveyor's Signature H. B. Young. Cyril B. Lewis.
 Nationality and Port of Registry BRITISH MIDDLESBROUGH. Date of Survey WHILE BUILDING.

Disposition and dimensions of superstructures, trunks, deckhouses and machinery casings to be inserted in the diagrams and tabular statement:—



Particulars of Superstructures, Trunks, Casings, Deckhouses.

	Coaming	Plating	Stiffeners	Spacing	End Attachments of Stiffeners	Size of Openings	Height of Sills	Height of Casings
Poop Bulkhead ...	PLATED VERTICALLY	44"	10 x 3 1/2 x 50 J	30"	LUGS AT TOP E.W. AT BOTTOM	2 OFF 4'-10" x 2'-1" 1 OFF 5'-0" x 5'-0"	18" 18"	7'-6"
Raised Quarter Deck Bulkhead ...	✓			4' x 4"				
Bridge, After Bulkhead ...	✓			7'-6"				
Bridge, Forward Bulkhead ...	✓							
Forecastle Bulkhead ...	PLATED VERTICALLY	30"	5 x 3 x 5 1/6 T	30"	NOT ATTACHED	3'-1" x 4'-1"	18"	7'-6"
Trunk, Aft ...	✓			2'-6"				
Trunk, Forward ...	✓							
Exposed Machinery Casings on Freeboard or Raised Quarter Decks ...	✓							
Exposed Machinery Casings on Superstructure Decks ...	3'-2" x 30"	26"	4 x 2 1/2 x 25 T	30"	BRTS ON TOP & CARRIED DOWN	✓	✓	7'-6"
Machinery Casings within Superstructures not fitted with Class I Closing Appliances ...	✓							
Deckhouses on Flush Deck Ships ...	PLATED VERTICALLY	35"	MIDSHIP HOUSE. FR. 6' x 3' x 36" F SIDES 4' x 3' x 34" F AFT 3 1/2 x 3' x 32" T	30" 30" 33"	BRTS T & B BRTS T & B NOT ATTACHED	4'-10" x 2'-4" NO OPENINGS 2'-1" x 4'-7" 4'-1" x 3'-1"	18" ✓ 18"	7'-0" 7'-0" 7'-0"

Particulars of Closing Appliances (state if capable of being manipulated from both sides).

Poop Bulkhead ...	HINGED STEEL W.T. DOOR PORT & STARBOARD SIDES. MANIPULATED FROM BOTH SIDES. PORTABLE PLATE WITH HOOKED BOLTS 12" APART (IN CENTRE) AND STORM BOARDS.
Raised Quarter Deck Bulkhead ...	✓
Bridge, After Bulkhead ...	✓
Bridge, Forward Bulkhead ...	✓
Forecastle Bulkhead ...	PORTABLE PLATES WITH HOOKED BOLTS 12" APART, PORT & STARBOARD SIDES.
Exposed Machinery Casings on Freeboard or Raised Quarter Decks ...	✓
Exposed Machinery Casings on Superstructure Decks ...	NO OPENINGS
Machinery Casings within Superstructures not fitted with Class I Closing Appliances ...	NO OPENINGS
Deckhouses on Flush Deck Ships ...	FORE END W.T. STEEL HINGED DOOR, STARBOARD SIDE, MANIPULATED FROM BOTH SIDES; NO OPENINGS IN SIDES. AFT END TWO STEEL HINGED DOORS, MANIPULATED FROM BOTH SIDES. PORTABLE PLATE WITH HOOKED BOLTS 12" APART PORT & STARBOARD SIDES.

EMPIRE CORBETT

Particulars of Gangway Cargo and Coaling Ports :—

DECKHOUSE

GANGWAY

STOPPED AT WIRE PLATFORM

ENTRANCE TO PUMP ROOM

F.C.L.E.

MACHINERY SPACE

OIL FUEL COFFERDAM

CARGO TANKS

COFFERDAM PUMP ROOM

CARGO TANKS

COFFERDAM

HOLD

PUMP ROOM

DEEP TANK

D.B.T.S

TO STORE AND TO MAGAZINE. 7'-9" x 40" COAMINGS. 1" T. COVER. T. COGLES.

DECKHOUSE

E.R.B. CASING

HATCH TO STORE 2 1/2" W. COVERS 2'-7" x 2'-7" COAMINGS 18" x 40" TARPANLIES & BATTENING ARR.

GANGWAY

DECK

HOUSE

Superstructure Deck

HATCH 2'-6" x 2'-6" COAMING 4" x 3 1/2" W.T. COVER. 40" T. COGLES 18" APART

ESCAPE HATCH 24" DIA. 6" x 40" COAMING, STEEL COVER WITH TOGGLES, MANIPULATED BOTH SIDES.

OVAL HATCHES TO O.F. BUNKERS & COFFERDAM. COAMINGS 9" x 40" COVER 40" WITH TOGGLES.

COFFERDAM HATCH 2'-6" x 1'-9" x 9" x 40" COAMING. 40" W.T. COVER.

PUMP ROOM COMPANION. 13'-7" x 2'-8" x 5'-9" x 1'-40" COAMING 18" W.T. STEEL DOOR MANIPULATED BOTH SIDES.

Freeboard Deck

W.T. DOOR

SHIFTING BOARDS & PORTABLE PLATES.

W.T. DOOR

E.R.B. CASING

O.T. HATCHES 21" x 14" 6" x 3 1/2" x 50" COAMING 40" STEEL COVER BOLTED

PUMP ROOM

BRIDGE

HOUSE

CARGO HATCH TO FORE HOLD

W.T. DOOR

HATCH TO CANN LOCKER 1'-9" x 9" x 9" x 40" COAMING 35" STEEL COVER & TOGGLES.

STORM BOARDS & PORTABLE PLATES.

W.T.M. TO FORE PEAK.

STAKEHOLD GRATINGS COVERED BY STRONG STEEL HINGED COVERS.
FIDLEY & FUNNEL VENTILATORS GOOD & EFFICIENT.
ENGINE ROOM SKYLIGHT OF STEEL WITH STEEL FLAPS STRONGLY CONSTRUCTED.

Particulars of Side Scuttles :—

Vertical distance of Sill of lowest Side Scuttle above top of keel..... 42'-3"

Particulars of Guard Rails :—

GUARD RAILS ON POOP 3 RODS 3'-8" HIGH WITH STANCHIONS SPACED 4'-9" APART.
 " " " FORECASTLE 2 " 3'-6" " " " " "
 " " " UPPER DEK. 3 " 3'-6" " " " " "
 BULWARK MIDSHIPS IN WAY OF DECKHOUSE 3'-6" HIGH EFFICIENTLY CONSTRUCTED AND SUPPORTED.

Particulars of Companionways :—

PUMP ROOM ENTRANCE AFT OF MIDSHIP HOUSE. 18'-0" x 8'-0" x 7'-0" PLATED VERTICALLY .35" STIFFENERS ON ALL SIDES 4 x 3 x .36 7, SPACED 2'-0" APART ON SIDES AND 2'-6" APART ON FORE & AFTER ENDS, STEEL HINGED W.T. DOOR ON AFTER END, MANIPULATED FROM BOTH SIDES, 18" COAMING. TOP PLATING .25" BEAMS 5 x 3 x .30 5, STEEL SKYLIGHTS ON TOP STRONGLY CONSTRUCTED.

PUMP ROOM ENTRANCE ON FORE DECK. COMPANIONWAY 3'-7" x 2'-3" x 5'-9" x .40" COAMING 18" x .40" STEEL W.T. DOOR, MANIPULATED BOTH SIDES.

Particulars of Ventilators in exposed positions on freeboard and superstructure decks :—

VENTILATORS ON FORECASTLE DECK. LED TO FORE HOLD 15" DIA COAMINGS 3'-0" x .36" P & S SIDES.
 " " UPPER DECK TO FORWARD PUMP ROOM 9' " " 3'-0" x .32" 1 OFF
 " " " " AFTER " " 18' " DERRICK POSTS P & S SIDES.
 " " CASING TOP LED TO PASSAGEWAY IN POOP 3 OFF, P & S SIDES. 9" DIA COAMINGS 1'-9" x .32"
 " " POOP DECK LED TO STEERING GEAR SPACE & STORE, 6" DIA COAMINGS 2'-6" x .36" 6 OFF.
 " " " " DRYING & OILSKIN ROOMS 5" DIA GOOSENECKS 18" HIGH STEEL TUBES & CAST STEEL TOPS.
 " " " " ACCOMMODATION IN POOP 5' " " 18' " " " " "

ALL VENTILATORS CONSTRUCTED IN ACCORDANCE WITH THE RULES.
AND COAMINGS CLOSED WITH WOOD PLUGS AND CANVAS COVERS.

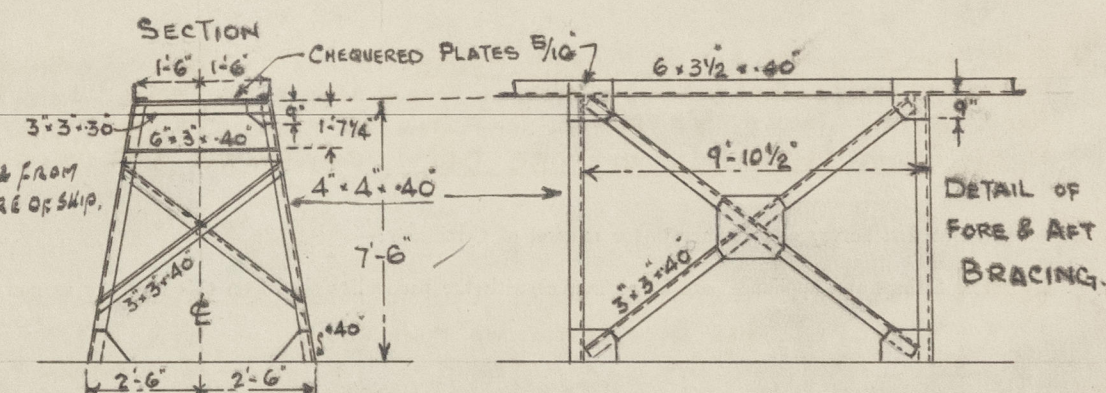
SOUNDING PIPE DECK PIECES 12" HIGH
WITH FLANGE TO TAKE EJECTORS
BRASS SCREW PLUG CHAINED
ON PIPE.

Particulars of Air Pipes in exposed positions on freeboard, raised quarter, or superstructure decks:—

Particulars of Air Pipes in exposed positions on forenoon, raised quarter, or superstructure decks :—					
AIR PIPES ON FORECASTLE DECK	LED TO	FORE PEAK	1 OFF	4 DIA	GOOSE NECK 18" HIGH
" "	UPPER DR. LED TO	FORE DEEP TANK.	2 " "	4 " "	36" " P & S.
" "	" "	COFFERDAMS	2 " "	4 " "	36" " P & S.
" "	POOP	AFTER PEAK TANK	2 " "	4 " "	18" " P & S.
" "	" "	RUDDER TRUNK.	2 " "	4 " "	18" " P & S.
" "	" "	OIL FUEL BUNKER	2 " "	4 " "	18" " P & S.
" "	UPPER POOP	D.S. TANKS	4 " "	2 OFF 2½" & 2 OFF 4" DIA.	36" " P & S.
SOUNDING PIPES TO OIL FUEL D.B.T.		2 OFF 2" DIA.	4' 0" ABOVE TANK TOP	FITTED WITH SELF-CLOSING COCKS	
" "	D.B. TANKS	5' 0"			
AIR PIPES TO OIL FUEL BUNKERS		FITTED WITH GOOSENECKS		WITH GAUZE AND SCREW COVERS	
" "	PEAKS & F.W. TANKS			WOOD PLUGS AND CANVAS COVERS	

Particulars of Gangways, Lifelines, etc. :—

FOR & AFT GANGWAY FROM POOP TO MIDSHIP HOUSE & FROM MIDSHIP HOUSE TO WINCH PLATFORM TWO IN CENTRE OF SHIP.



DETAIL OF
FORE & AFT
BRACING.

Particulars of Freeing Arrangements

Particulars of Freeing Arrangements.						
	Length of Bulwark	Height of Bulwark	Size of Freeing Ports	Number each side	Area each side	Rule area each side
After Well	FLUSH DECK. /					
Forward Well						

State position of each freeing port (After Well :—

(F. and A. position and height above deck edge) { Forward Well:—

State whether the freeing ports are fitted with shutters, bars, or rails, and give particulars of such:—

Additional area where sheer is less than standard.

005307-005310-0022 2/2

PARTICULARS OF PROTECTION TO OPENINGS, ETC.

HATCHWAYS ON FREEBOARD AND SUPERSTRUCTURE DECKS.									
Description of Hatchway		W.T. HATCHES ON UPPER DECK.							
Dimensions of Hatchway									
COAMINGS	Height above Deck								
	Thickness	Sides							
	Stiffeners	Ends							
	Brackets, Stays								
HATCH BEAMS	Number								
	Spacing								
	Scantling and Sketch								
	Bearing Surface								
FORE AND AFTERS	Number								
	Spacing								
	Unsupported Lengths								
	Scantling* and Sketch								
HATCH COVERS	Material								
	Thickness								
	How fitted								
	Bearing Surface								
Spacing of Cleats									
Number of Tarpaulins									

*Are wood fore and afters steel shod at all bearing surfaces?
 Are battens and wedges efficient and in good condition?
 Are tarpaulins in good condition and in accordance with rule requirements?
 Are lashings provided in accordance with rule requirements?

Particulars of any special features:—

Endorsement at first survey and at surveys for renewal of Certificate:—

The fittings and appliances are in accordance with the particulars shown on this form (or as now modified) and are in good condition.

CARGO HATCHES ON UPPER DECK 6 PORT & 6 STARBOARD TO WING TANKS. 4 STARBOARD AND 2 PORT TO CENTRE TANKS 5'3" 4'0" COAMINGS 8" 150" T O.T. COVERS 50" THICK WITH 3 1/2" 3 1/2" STIFFERS 2 OFF - 2" APART TOGGLES 15" APART.		CARGO HATCH TO FORE HOLD 12'0" 8'0" COAMING 2'6" 44" 7'3 3/8" STIFFERS ON ALL SIDES 10' FROM TOP, 2 PLATE STAYS ON FORE & AFTER SIDES 42" THICK W.T. STEEL COVER 86" WITH STIFFERS 6'3 1/2" 5/16" SPACED 3'0" APART.	
NONE FITTED.			

CONSTRUCTION IN ACCORDANCE WITH RULES
 CLOSED WITH WOOD PLANKED HATCH