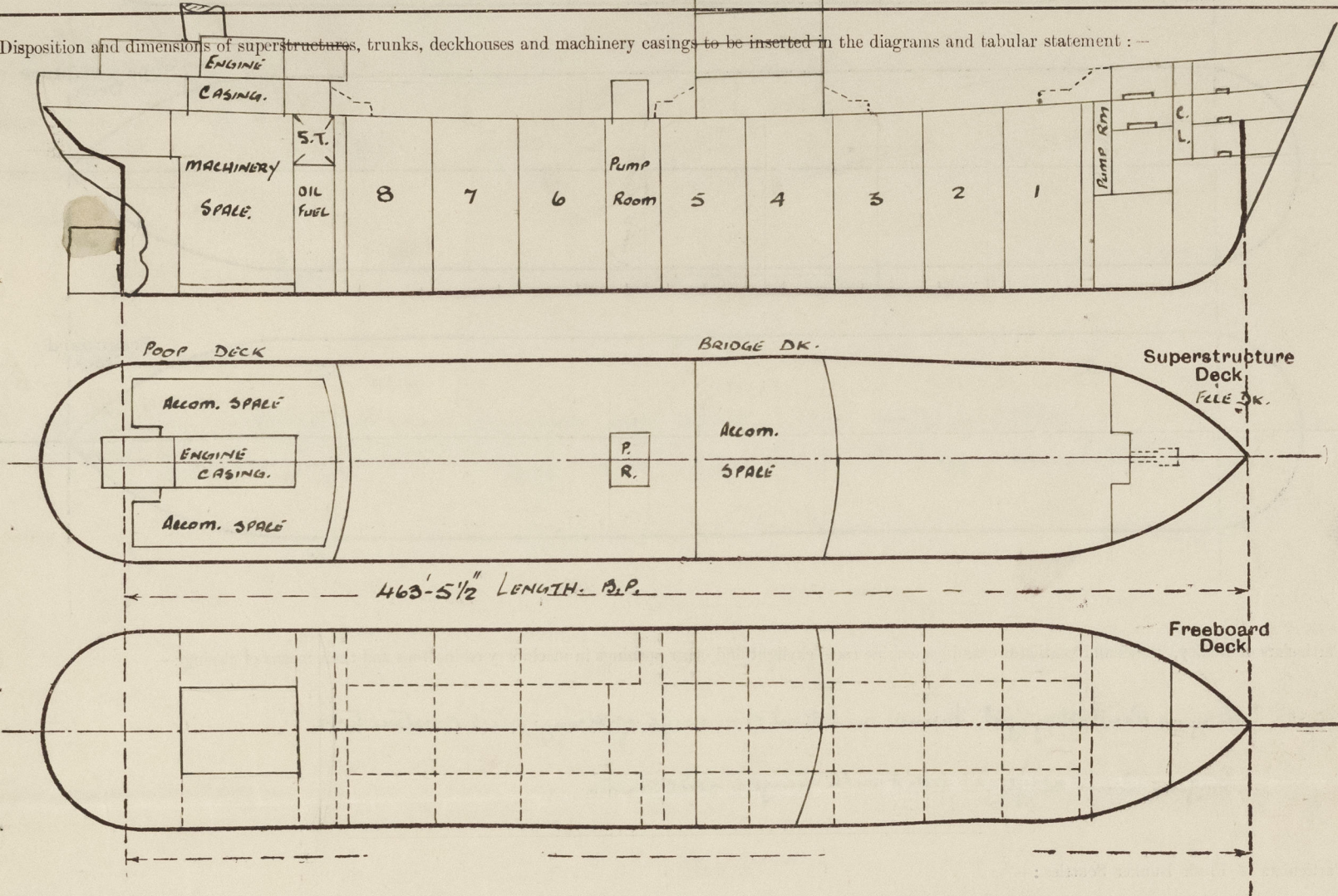


Lloyd's Register of Shipping.
SURVEYS FOR FREEBOARD.
(CONDITIONS OF ASSIGNMENT.)

Ship's Name "BRITISH LIBERTY" Port of Survey Sunderland
Official Number 183009 Surveyor's Signature Neil F.H. Duncan
Nationality and Port of Registry British London Date of Survey During Construction.

Disposition and dimensions of superstructures, trunks, deckhouses and machinery casings to be inserted in the diagrams and tabular statement :-

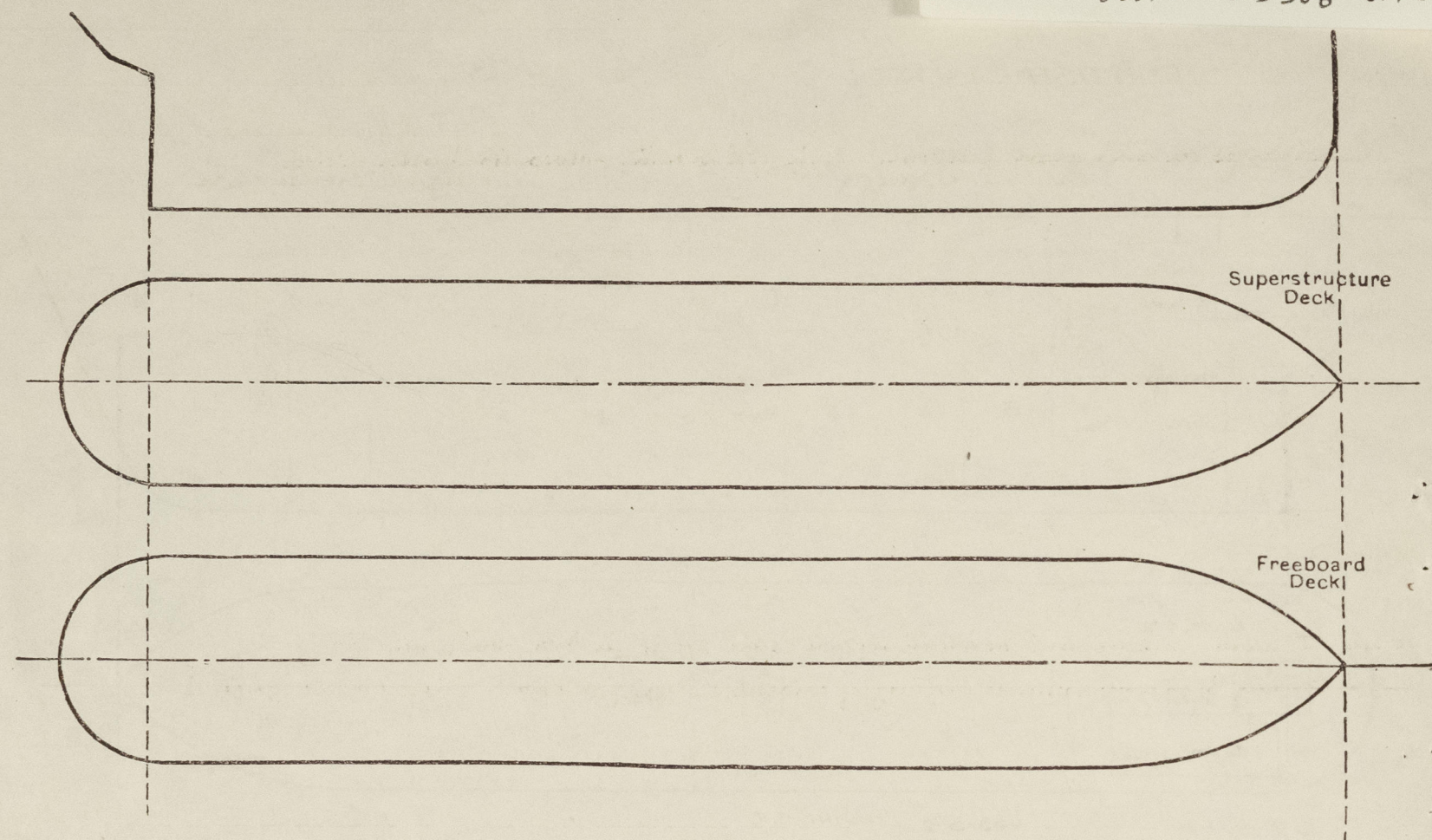


Particulars of Superstructures, Trunks, Casings, Deckhouses.								
	Coaming	Plating	Stiffeners	Spacing	End Attachments of Stiffeners	Size of Openings	Height of Sills	Height of Casings
Poop Bulkhead	44" ✓	44" ✓	10" x 3 1/2" x 40" L	30" ✓		5'-0" x 3'-0"	18"	8'-0"
Raised Quarter Deck Bulkhead ...								
Bridge, After Bulkhead	30" ✓	30" ✓	4" x 3" x 32" L	30" ✓		4'-1" x 3'-1"	19"	8'-0"
Bridge, Forward Bulkhead	44" ✓	44" ✓	10" x 3 1/2" x 40" L	30" ✓		5'-0" x 3'-0"	18"	8'-0"
Forecastle Bulkhead	30" ✓	30" ✓	4" x 3" x 32" L	30" ✓		4'-1" x 3'-1"	18"	8'-0"
Trunk, Aft						4'-3" x 2'-0"	18"	8'-0"
Trunk, Forward								
Exposed Machinery Casings on Freeboard or Raised Quarter Decks ...								
Exposed Machinery Casings on Superstructure Decks ... (BOLLER)	30" ✓	26" ✓	3 1/2" x 3" x 30" L	30" ✓	3 KTS. TOP.	4'-3" x 2'-3"	18"	8'-0"
Machinery Casings within Superstructures not fitted with Class I Closing Appliances								
Deckhouses on Flush Deck Ships ...								

Particulars of Closing Appliances (state if capable of being manipulated from both sides).	
Poop Bulkhead	Hinged Steel W.T. Door, operated from both sides.
Raised Quarter Deck Bulkhead ...	
Bridge, After Bulkhead	3" Shifting boards in channels. ✓
Bridge, Forward Bulkhead	Hinged Steel W.T. Door, operated from both sides
Forecastle Bulkhead	3" Shifting boards in channels
Exposed Machinery Casings on Freeboard or Raised Quarter Decks ...	Hinged Steel W.T. Door, operated from both sides.
Exposed Machinery Casings on Superstructure Decks ... BOLLER	
Machinery Casings within Superstructures not fitted with Class I Closing Appliances	Two Hinged W.T. Doors 4'-3" x 2'-3" opening from both sides.
Deckhouses on Flush Deck Ships ...	

Name of Ship *British Liberty*
Freeboard Report Examined
(Date) *24.5.57*
Signed *W. J. [illegible]*

The following diagrams should be used to indicate the positions of cargo and coaling hatchways, gangways which would affect the seaworthiness of the ship:—



Particulars of fiddley, funnel and ventilator coamings, engine room skylight and other openings in machinery casing tops and their means of closing :—

Engine Room Skylight, Funnel and Vent coverings of strong steel construction X

Engine Room skylight fitted with hinged steel covers. ✓

Particulars of Flush Bunker Scuttles :—

None.

Particulars of Companionways :—

Pump Room Entrance Plating .30", Stiffeners 4"x3"x.30" Spaced 24" apart ✓
 Brackets top and bottom. Forward end stiffeners 6"x3"x.30 B.A. Spaced 27" apart ✓
 Brackets top and bottom. Deck opening 6'-6" x 5'-6". Skylight 6'-6" x 5'-6". ✓
 Hinged W.T. Door (mechanism) 4'-3" x 2'-3" Sill 24" OPERATED BOTH SIDES. ✓

Particulars of Ventilators in exposed positions on freeboard and superstructure decks :—

1-6" Cowb Bent Wosning 30"x30" To Top Peak Wire.
 3-6" " " 30"x30" To Yale Linen Dks. } In Yale Dk.
 2-12" " " 30"x34" To Top Hold.
 1-12" " " 30"x34" To Top Pump Rm. }

2-6" Dowel Nests Cramping 30"x30" To Sliding Door
2-6" " " 30"x30" To Store Room
1-4" " " 30"x32" To Repair Machine } Gen Pwp DK

Bowl Vents closed by means of wood plugs and canvas covers.

Particulars of Air Pipes in exposed positions on freeboard, raised quarter, or superstructure decks :—

all air Pipes of a patent type and in accordance with the plan of "Automatic Vent pipes for oil fuel and Water Ballast tanks" approved 3.1.46 ✓

Particulars of Gangway Cargo and Coaling Ports :—

None

Particulars of Scuppers and Sanitary Discharge Pipes :—

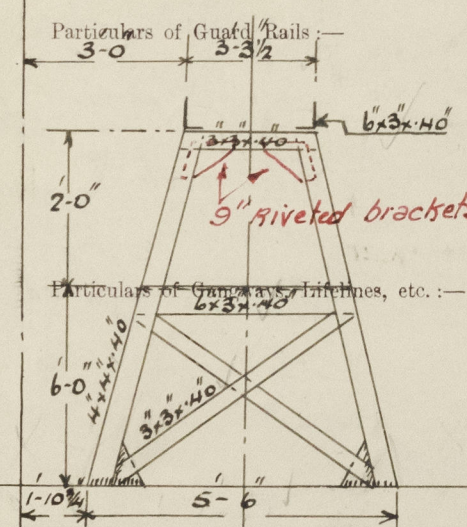
Discharges on and above foreward deck led to N.R. valves in Tween decks.

Particulars of Side Scuttles:—

10" and 12" diam. Sidelights to accommodate, stove space in Poop, bridge and Yell., and to steering gear compartment, strongly constructed and fitted with hinged deadlights.

Vertical distance of Sill of lowest Side Scuttle above top of keel

310-1



3 rods, stanchions spaced approx. 4'-6"

On rails 3'-6" in height. Steel Bulwarks Amidships forward of Bridge 25'-0" with one firing post pos. 9'-0" x 9", aft of bridge 23'-6" with one firing post pos. 13'-0" x 9"

9" riveted brackets

Particulars of Gangways, Lifelines, etc. :—


Time 0 aft Gangway 8'-0" high from Poo to Bridge house and Bridge to Kele, 5"x3" O.P. fore 0 aft. Stringer 6"x2"x40", Gangway supports 12 fwd, 14 aft. spaced approx. 8'-4" apart. Fore 0 aft bracing 2 fwd, 1 aft. Hand rail 3'-6" high, 2 rails 1'-4" apart, stanchions spaced 4'-6" apart. Gangway supports welded to deck.

Particulars of Freeing Arrangements.						
	Length of Bulwark	Height of Bulwark	Size of Freeing Ports	Number each side	Area each side	Rule area each side
After Well						
Forward Well						

State position of each freeing port { After Well :—
(F. and A. position and height above deck edge) { Forward Well :—

State whether the freeing ports are fitted with shutters, bars, or rails, and give particulars of such :—

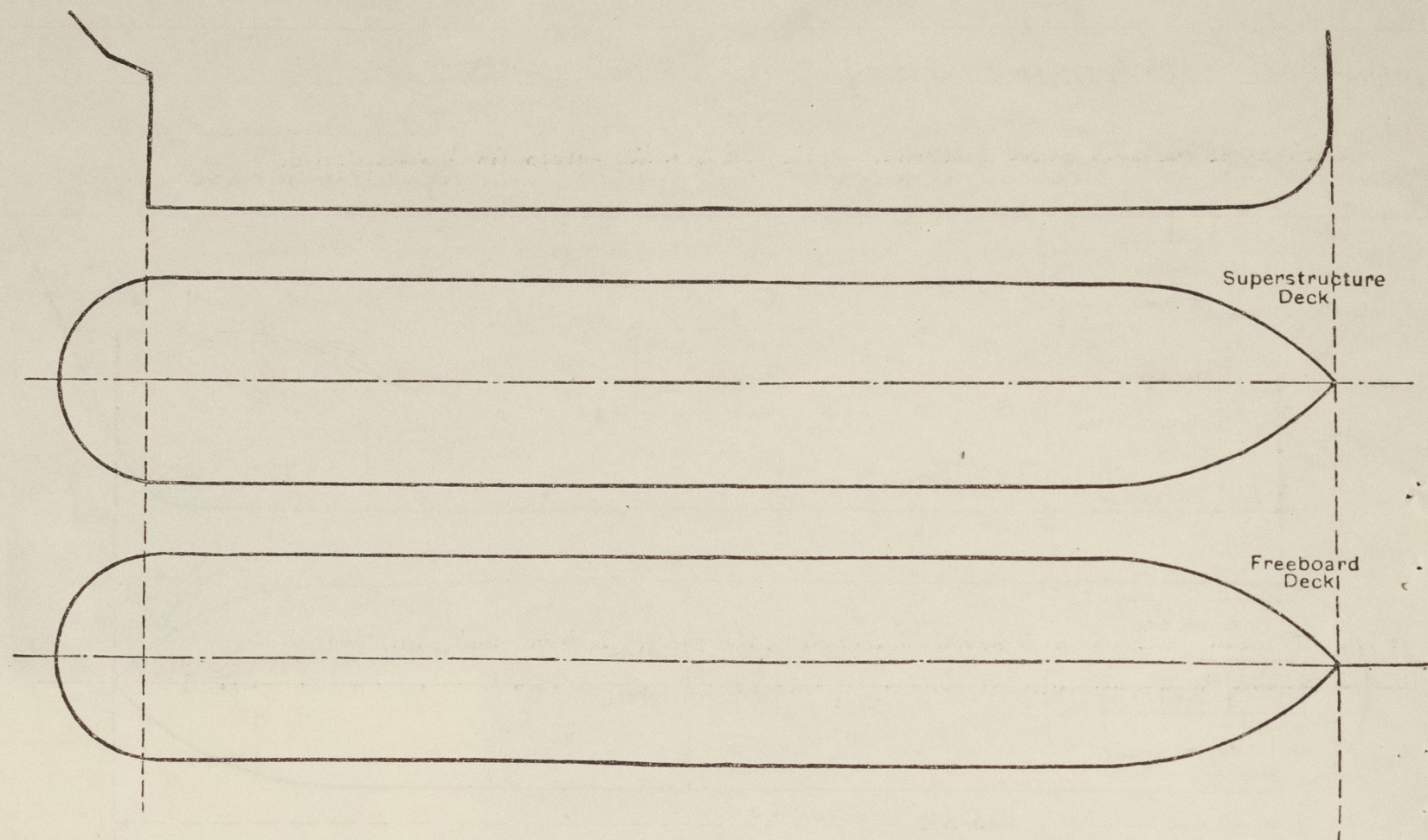
Additional area where sheer is less than standard.



© 2021
Lloyd's Register
Foundation

PARTICULARS OF PROTECTION TO OPENINGS, ETC.

The following diagrams should be used to indicate the positions of cargo and coaling hatchways, gangway, cargo and coaling ports, ventilators, companionways, etc., which would affect the seaworthiness of the ship:—



Particulars of fiddle, funnel and ventilator coamings, engine room skylight and other openings in machinery casing tops and their means of closing:—

Engine Room skylight, funnel and Vent coamings of strong steel construction ✓

Engine Room skylight fitted with hinged steel covers. ✓

Particulars of Flush Bunker Scuttles:—

None. ✓

Particulars of Companionways:—

Pump Room Entrance Plating 30", Stiffeners 4"x3"x30" spaced 24" apart ✓
 Brackets top and bottom. Forward end stiffeners 6"x3"x30" spaced 24" apart ✓
 Brackets top and bottom. Deck opening 6'-6" x 5'-6". Skylight 6'-6" x 5'-6".
 Hinged W.T. Door (mechanics) 4'-3" x 2'-3" Sill 24" OPERATED BOTH SIDES. ✓

Particulars of Ventilators in exposed positions on freeboard and superstructure decks:—

1-6" Cowl Vent Coaming 30"x30" to Fore Peak Store. } On Fore DK. ✓
 3-6" " " 30"x30" to Fore Peak Store. }
 2-12" " " 30"x30" to Fore Peak Store. }
 1-12" " " 30"x30" to Fore Peak Store. }

2-6" Cowl Vents Coamings 30"x30" to Steering Gear } On Fore DK. ✓
 2-6" " " 30"x30" to Steering Gear }
 1-9" " " 30"x30" to Steering Gear }

Cowl Vents closed by means of wood flap and canvas covers. ✓

Particulars of Air Pipes in exposed positions on freeboard, raised quarter, or superstructure decks:—

All Air Pipes of a patent type and in accordance with the plan of "Automatic Vent pipes for Oil Fuel and Water Ballast Tanks" approved 3.1.46 ✓

Particulars of Gangway Cargo and Coaling Ports:—

British Liberty

None. ✓

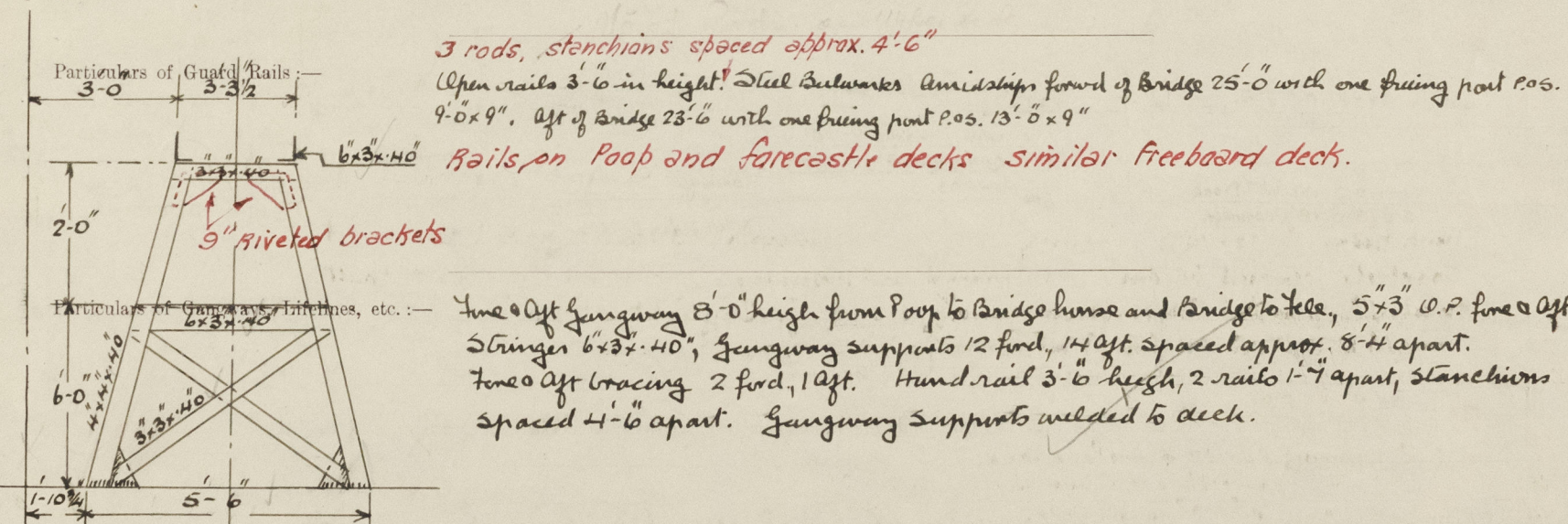
Particulars of Scuppers and Sanitary Discharge Pipes:—

Discharges on and above freeboard deck led to N.R. valves in Tween decks. ✓

Particulars of Side Scuttles:—

10" and 12" diam. Side lights to accommodation, stove space in Poop, bridge and Yell., and to Steering Gear compartment, strongly constructed and fitted with hinged deadlights. ✓

Vertical distance of Sill of lowest Side Scuttle above top of keel 36'-0" ✓



Particulars of Freeing Arrangements.						
	Length of Bulwark	Height of Bulwark	Size of Freeing Ports	Number each side	Area each side	Rule area each side
After Well ...						
Forward Well ...						

State position of each freeing port ... (After Well:—
 (F. and A. position and height above deck edge) Forward Well:—

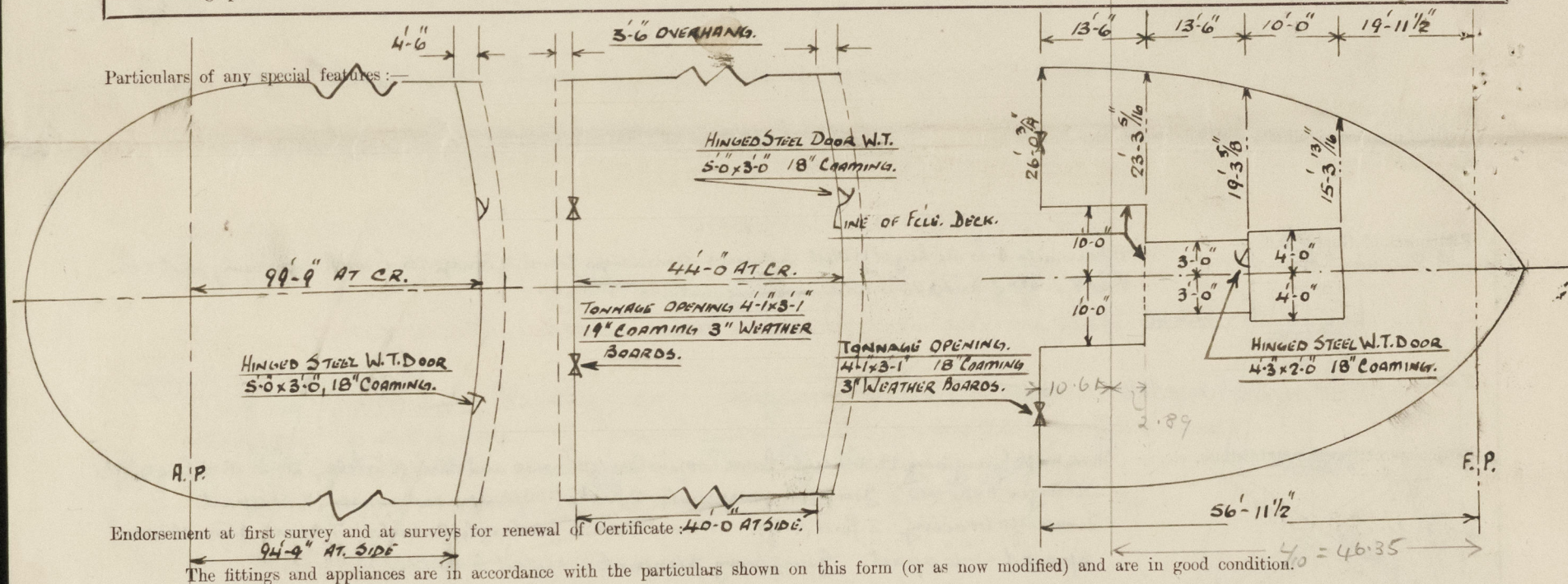
State whether the freeing ports are fitted with shutters, bars, or rails, and give particulars of such:—

Additional area where sheer is less than standard.

PARTICULARS OF PROTECTION TO OPENINGS, ETC.

HATCHWAYS ON FREEBOARD AND SUPERSTRUCTURE DECKS.

Description of Hatchway	Main Cargo Tank hatches on Upper Deck.
Dimensions of Hatchway	6'-0" x 4'-0" with Coamings 12" x 50" plate welded to deck. Steel covers 6'4" with 16 toggles per cover.
COAMINGS	Height above Deck
	Thickness	Sides
	Stiffeners	Ends
	Brackets, Stays
HATCH BEAMS	Number
	Spacing
	Scantling and Sketch
	Bearing Surface
FORE AND AFTERS	Number
	Spacing
	Unsupported Lengths
	Scantling and Sketch
	Bearing Surface
HATCH COVERS	Material
	Thickness
	How fitted
	Bearing Surface
Spacing of Cleats
Number of Tarpaulins
<p>*Are wood fore and afters steel shod at all bearing surfaces? ✓</p> <p>Are battens and wedges efficient and in good condition? ✓</p> <p>Are tarpaulins in good condition and in accordance with rule requirements? ✓</p> <p>Are lashings provided in accordance with rule requirements? ✓</p>				



The Shell Sideplating extends to the extremities of the Poop and Bridge deck overhangs

Shells on Poop deck measured from base line. Poop DK is 8'-0" parallel to upper DK at Cr.

Deck at Cr.

Openings in Poop Bhd closed by Steel W.T. Dows. (Mechans)

F. 44'-5 15/16"

Transverse 44'-2 7/16"

FR. 5 46'-11 1/2"

10 46'-8 3/8"

15 46'-4 1/2"

20 46'-0 13/16"

25 45'-9 1/8"

30 45'-5 3/8"

35 45'-1 3/4"

40 44'-10 1/4"



© 2021

Lloyd's Register Foundation