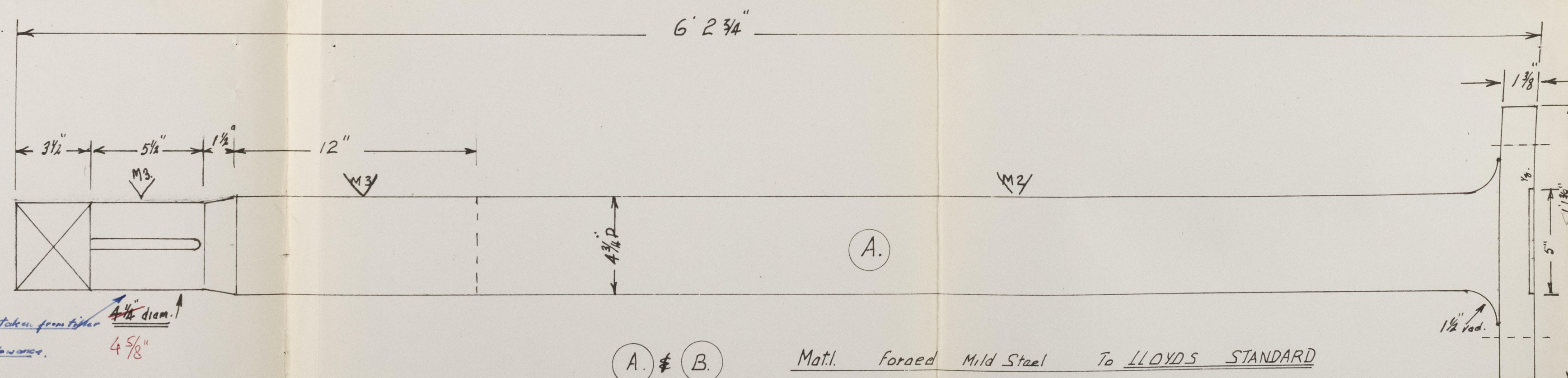
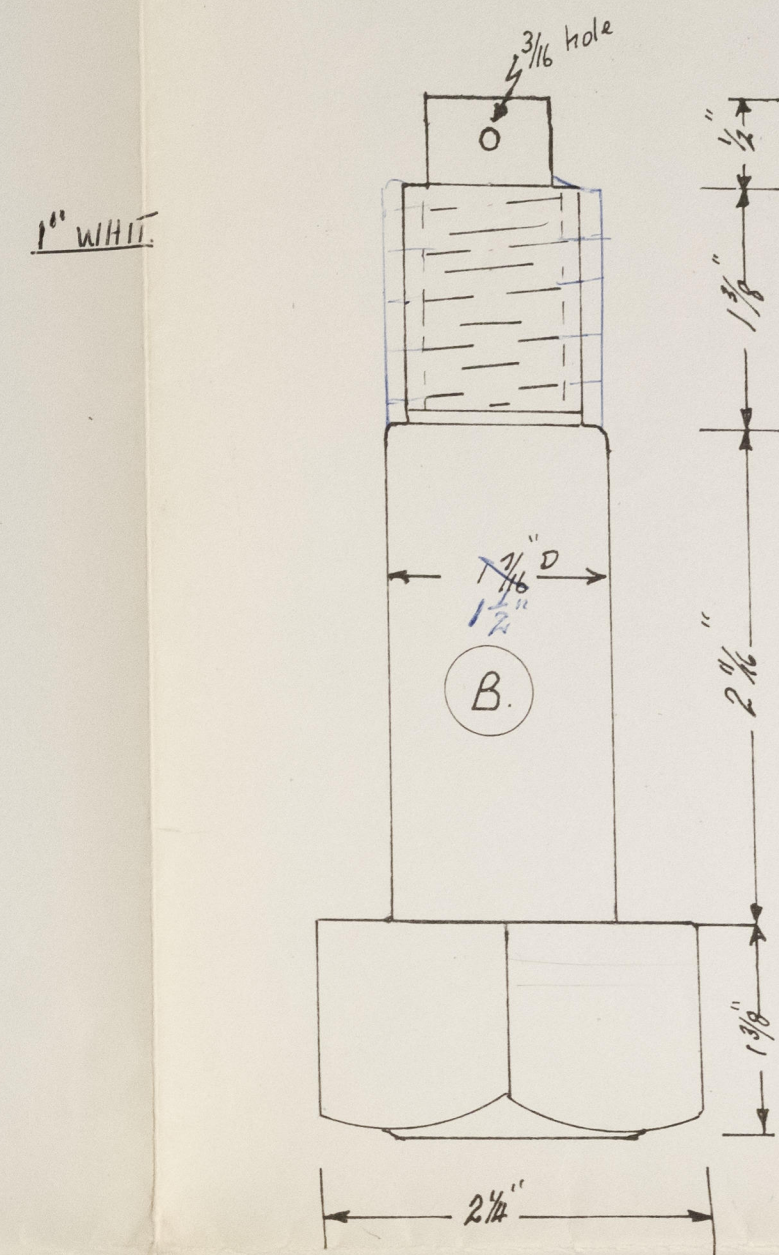
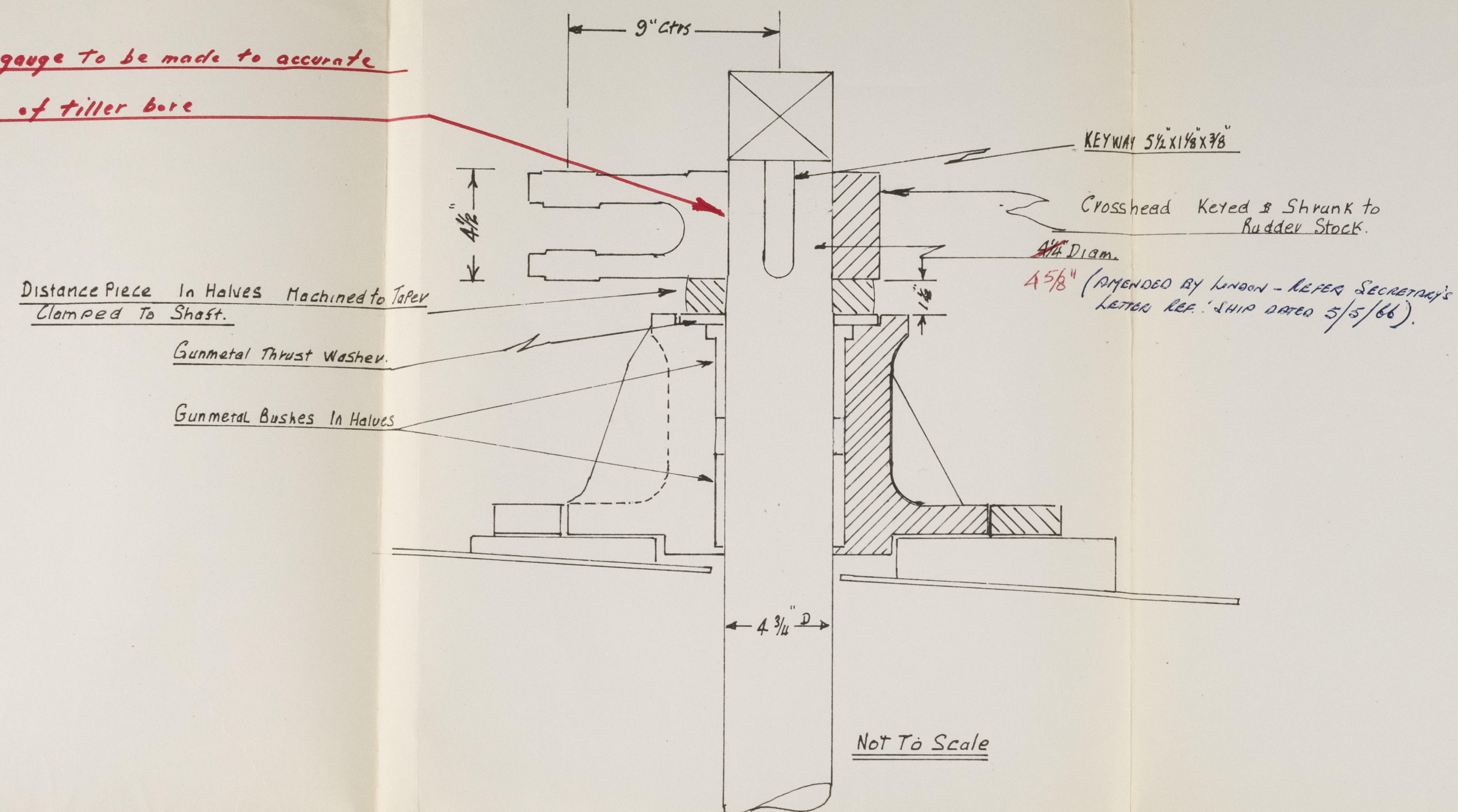
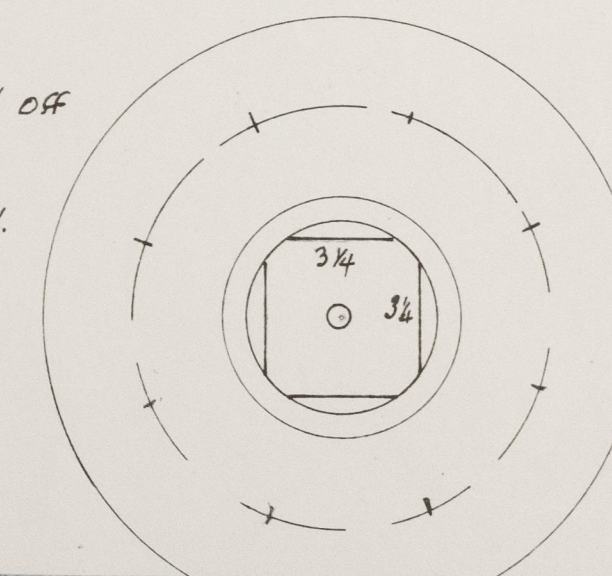


Pin gauge to be made to accurate  
size of tiller bore

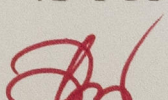


Final machining to pin gauge taken from taper  $4\frac{1}{4}$  diam.  
less shrinkage allowance.  $4\frac{5}{8}$ "

Holes to be Marked Off  
From Rudder Head.  
When Set up true  
Holes to be Reamed.



This drawing is the property of:-  
WESTMINSTER DREDGING AUSTRALIA PTY. LIMITED  
Not to be copied, reproduced, or disclosed to any third party  
without written Authority

REVISIONS.	WESTMINSTER DREDGING AUST. P. 1 <sup>st</sup>		
16-3-66.			
	<u>RUDDER. STOCK.</u>		
DRAWN	DATE	Scale.	Drawing N <sup>o</sup> 2020
C.M.C.	16-3-66	3" = 1 ft.	00366/1.
Checked.			W.D. ATLAS.



S.S. "W.D. ATLAS"

DRAWG. No. <sup>AT</sup> 00366/1

"PROPOSED REPLACEMENT RUDDER STOCK."

NYR. RPT. 8. No 871.



© 2020

Lloyd's Register  
Foundation