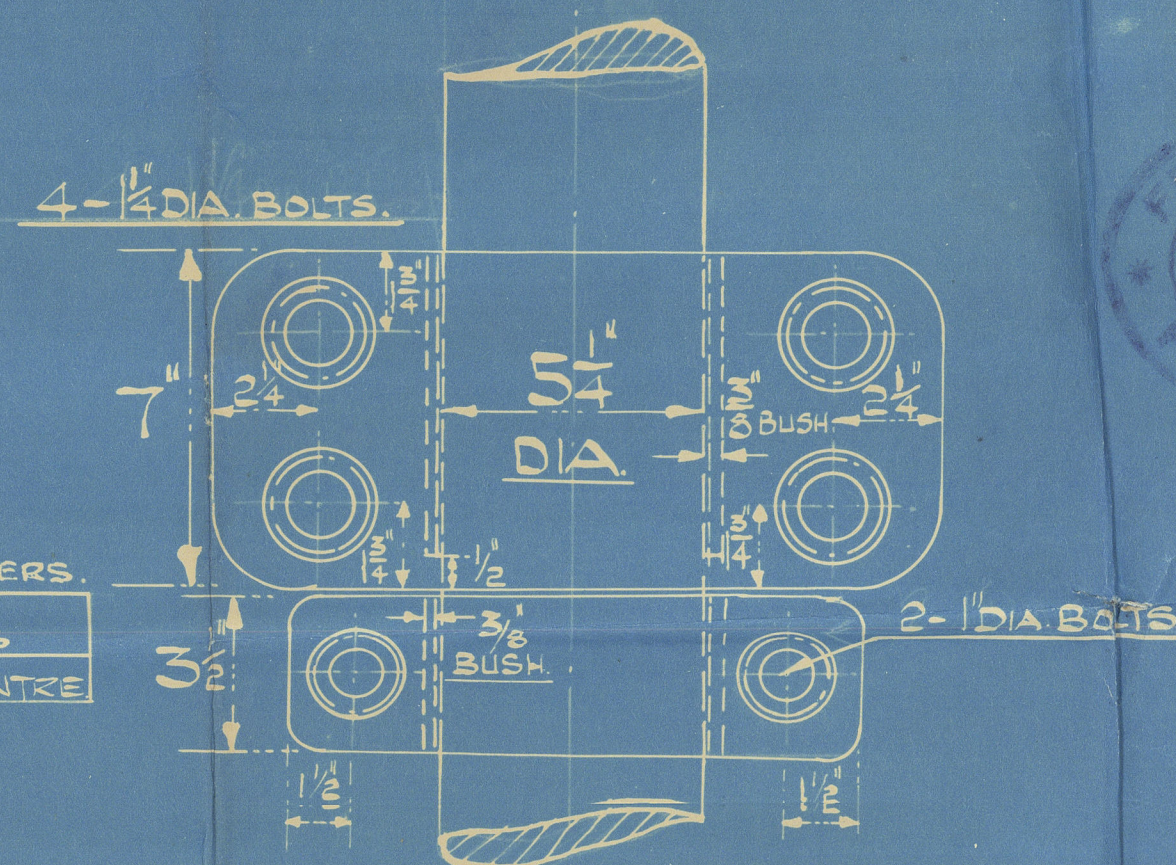
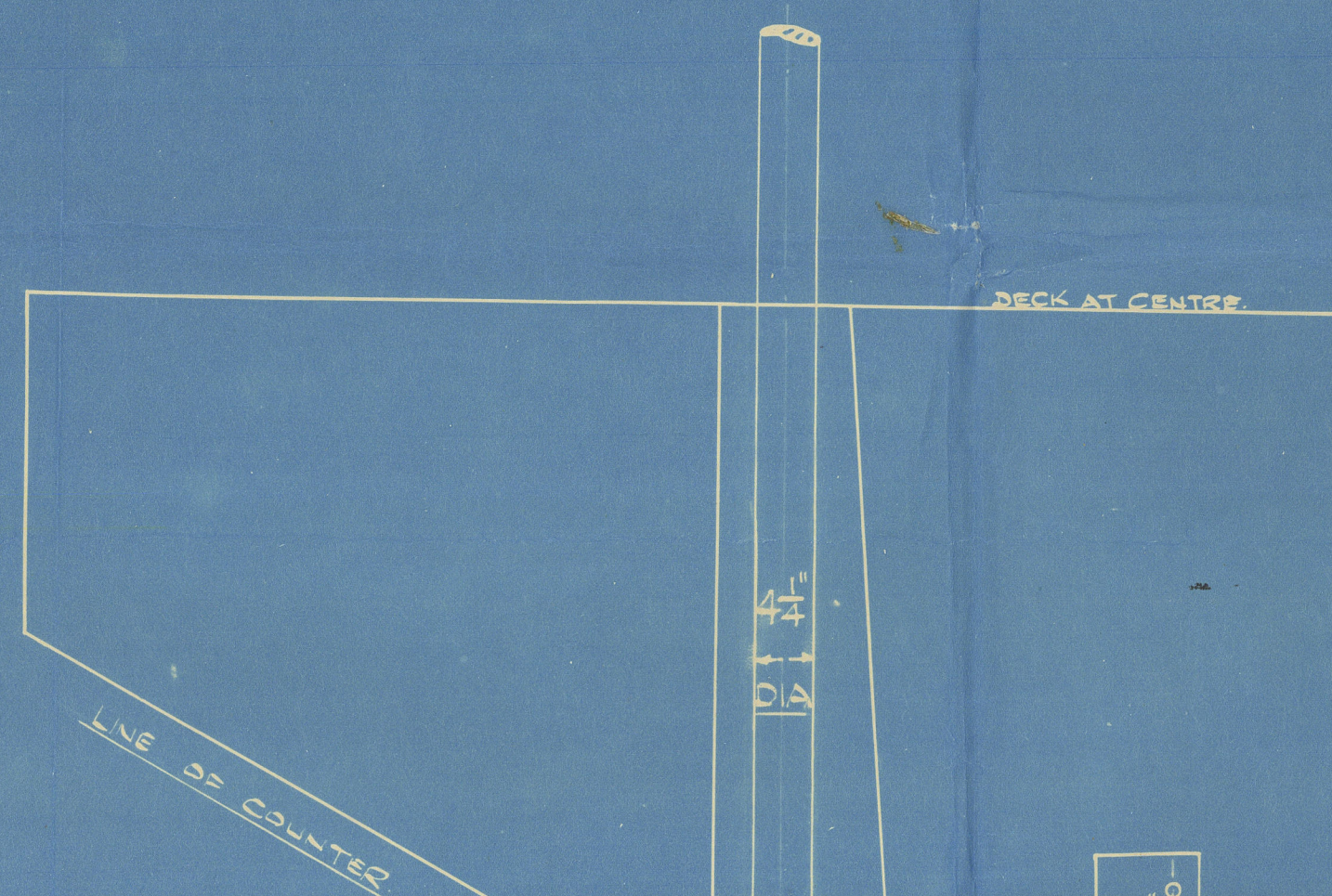
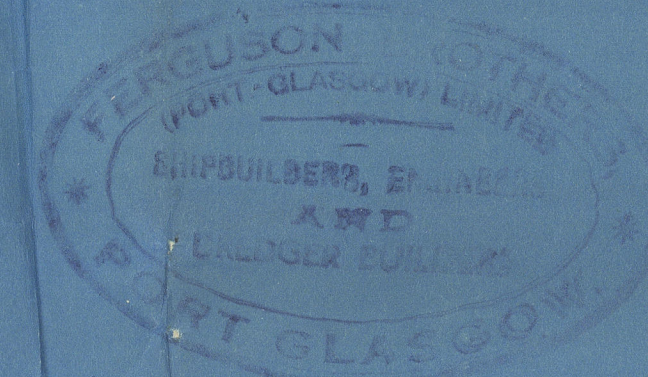


YARD No. 388.

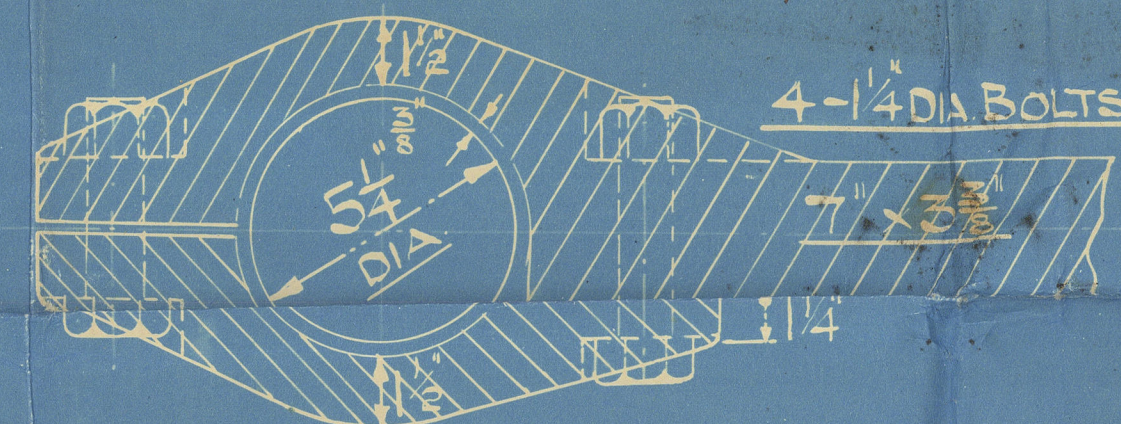
STERNFRAME & RUDDER.

SCALES AS MARKED.

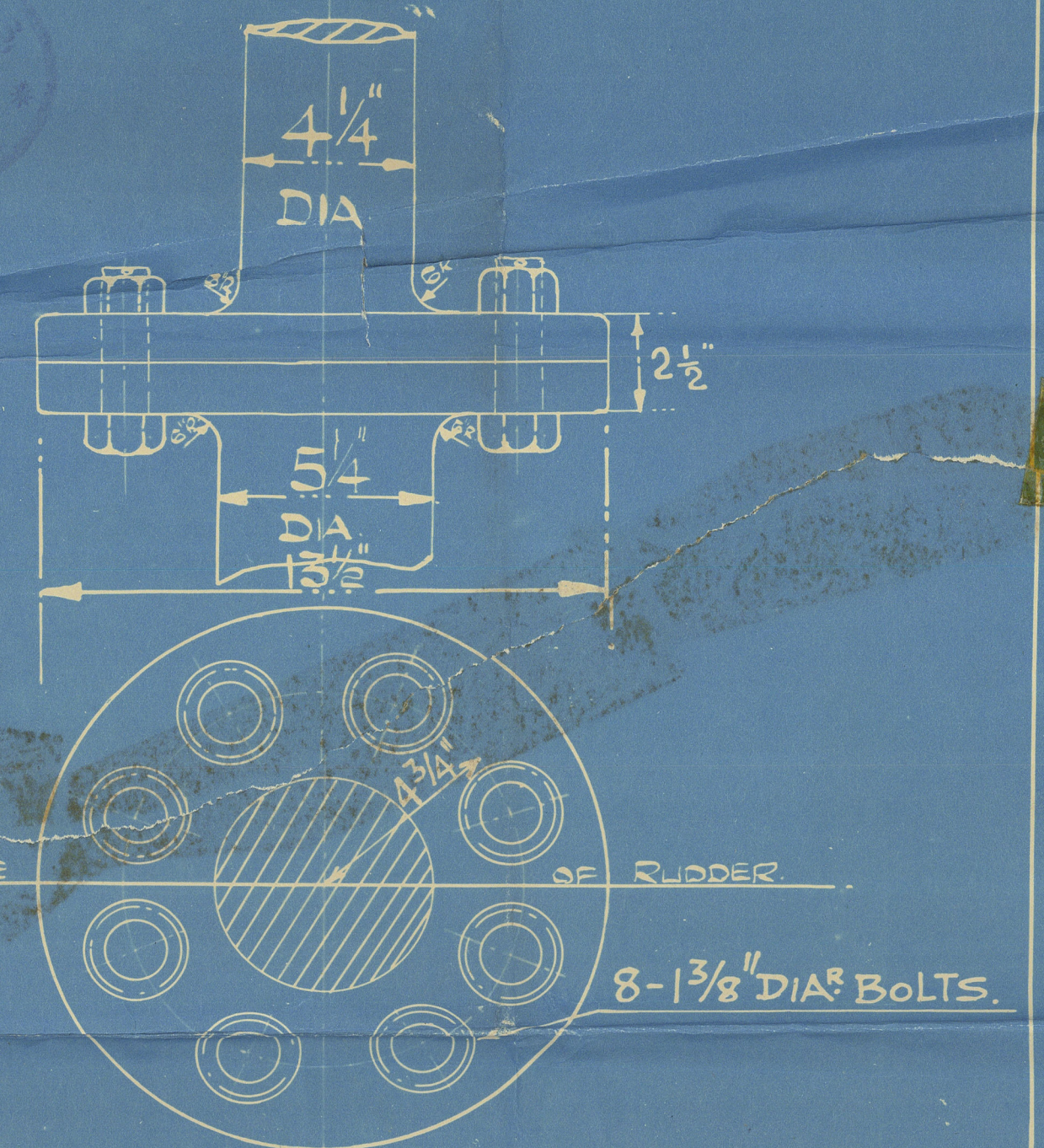
TOTAL AREA OF RUDDER = 46.4 SQ. FT.
C.G. AFT OF CENTRE LINE OF STOCK = 1.16 FT.
SPEED OF VESSEL = 8 KNOTS.
DIA. OF STOCK = $5\frac{1}{4}$ " AND $4\frac{1}{4}$ " DIA.



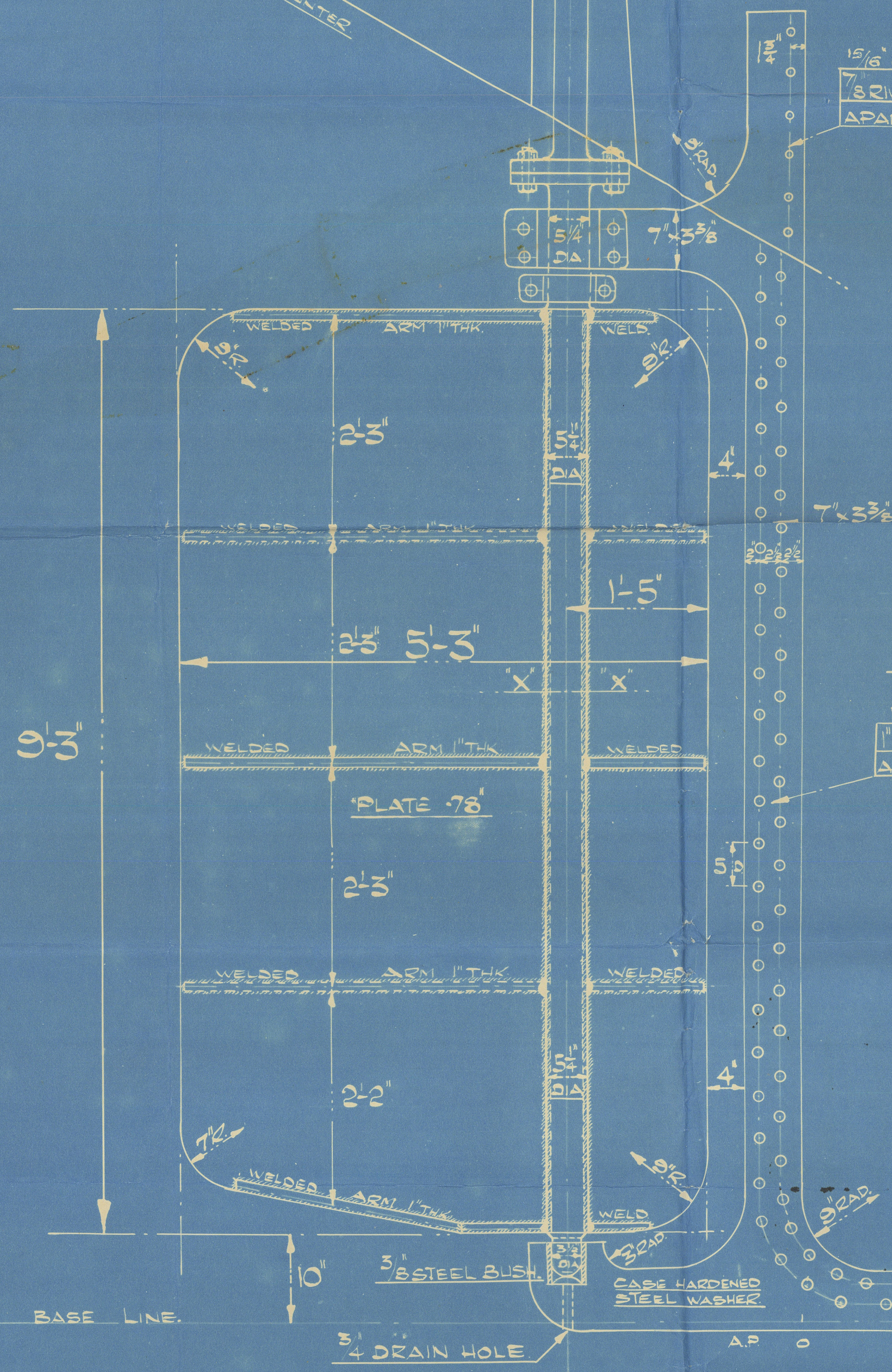
ELEVATION OF BEARING GLUDGEON AND PREVENTER BAND.



PLAN OF BEARING GLUDGEON.
SCALE - 3" = ONE FOOT.



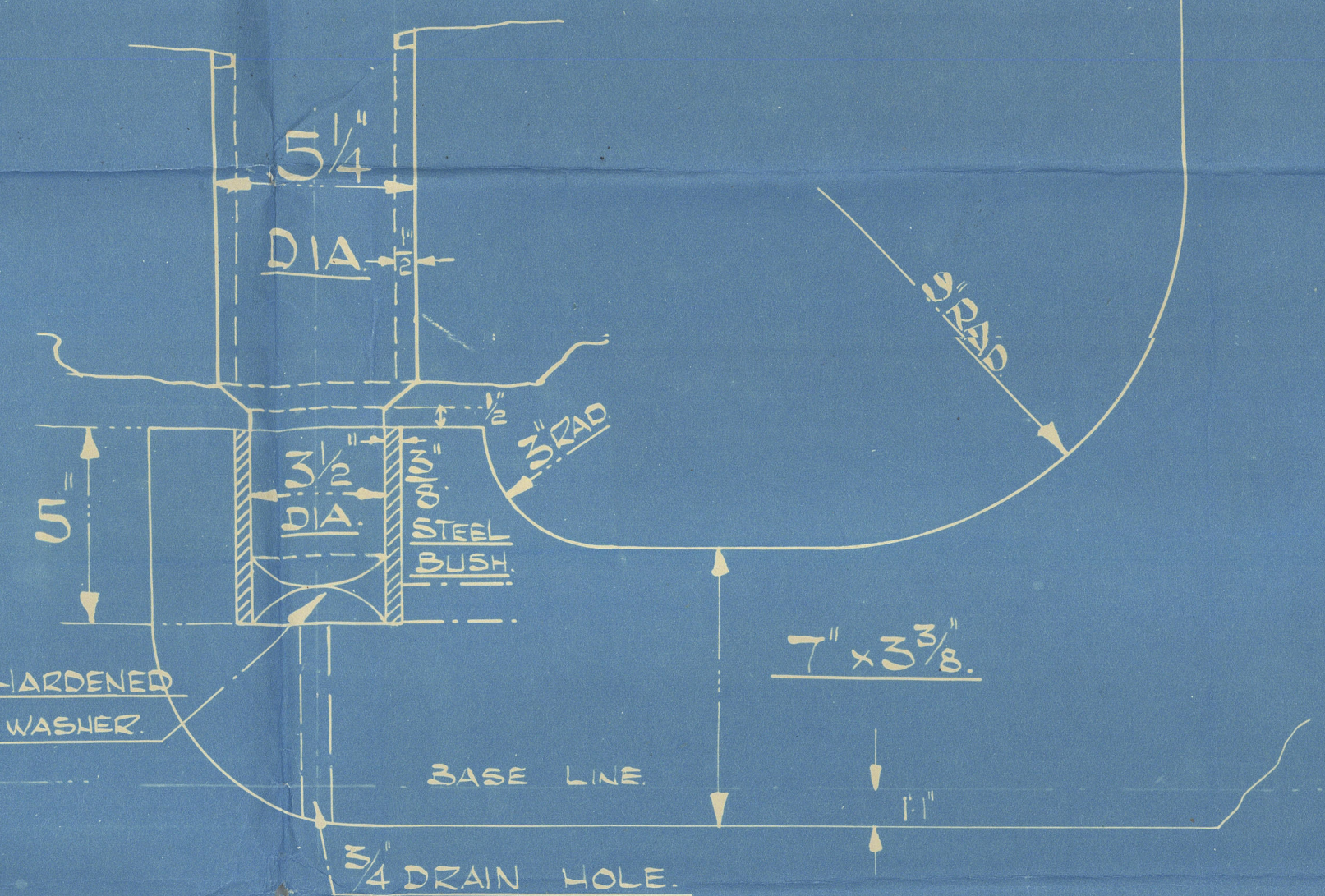
ELEVATION AND PLAN OF COUPLING.
SCALE - 3" = ONE FOOT.



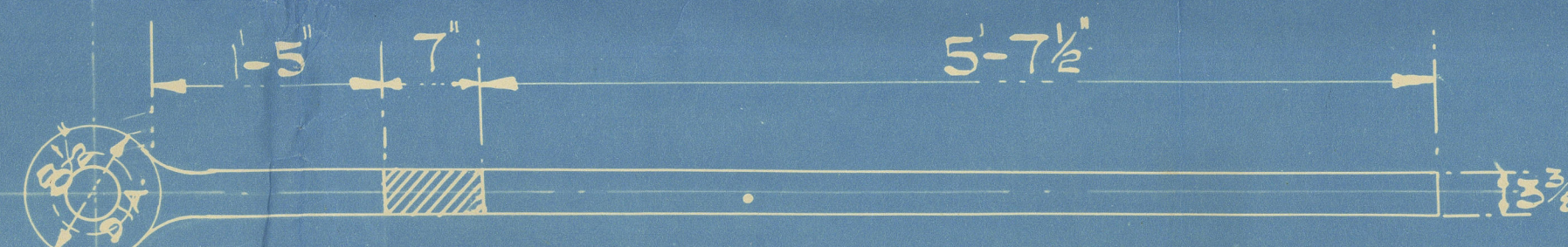
SECTION AT X-X.
1/2" SLOT TO TAKE WELDED PLATE.
1 1/8" DIA HOLES BY 8/8.
1 RIVETS 5 DIAMETERS APART CENTRE TO CENTRE.

STERNFRAME $7 \times 3\frac{3}{8}$ "

CASE HARDENED STEEL WASHER.

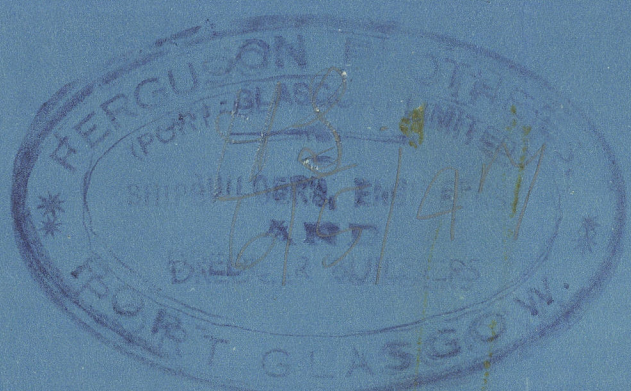


DETAIL OF BOTTOM BEARING.
SCALE - 3" = ONE FOOT.



TEMPLATE OF WEELPICE.
SCALE - 1" = ONE FOOT.

SECTION THRO RUDDER SHOWING WELDED ARMS.



APPROVED
LLOYD'S REGISTER OF SHIPPING

FERGUSON BROS.
(PORT-GLASGOW) LTD.
SHIPBUILDERS & ENGINEERS

© 2020

Lloyd's Register Foundation

005293-005300-0098

Ferguson Bros (P.S.) Ltd

Land No 388



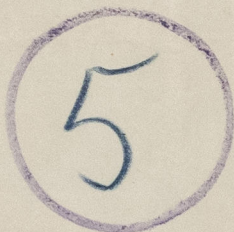
Sternframe & Ruddet

"MERSEY ENGINEER"



GREENOCK FIRST ENTRY REPORT N° 23951.

RECORDS DEPT.,
LONDON



© 2020

Lloyd's Register
Foundation

005293-005300-0098