

TO CLASS LLOYDS 100. A.1. "BUCKET DREDGER"



FERGUSON BROS
(PORT-GLASGOW) LTD
SHIPBUILDERS & ENGINEERS

LLOYDS NUMERALS (EQUIPMENT).

2ND LONG ¹	$L \times (B+D) = 9774$
FORECASTLE	$\frac{3}{4} (28 \times 8) = 168$
DECKHOUSES	$\frac{1}{2} (19 \times 7) = 66.5$
CASING	$\frac{1}{2} (46 \times 7) = 161$
EQUIPMENT NUMBER	$= 10.169$

Dimensions: 181' B.P. x 41' x 13' MLD

NUMERALS

$$L = 181.00, \quad B = 41.00, \quad D = 13.00.$$

$$L \times D = 2353, \quad L \times (B+D) = 9774.$$

$$L/D = 13.92, \quad d = 11.33.$$

RIVETING.

BUTTS OF KEEL WELDED.
BUTTS OF SHEERSTRAKE STRAPPED & STRAKE BELOW LAPPEL TREBLE RIVETED FOR 1/2 LENGTH & TO DOUBLE AT ENDS. REMAINDER OF SHELL D.R. ALL FIVE X. AFT.
BUTTS OF DECK STRINGER PLATING TREBLE RIVETED FOR 1/2 LENGTH & TO DOUBLE AT ENDS.
BUTTS OF DECK PLATING DOUBLE RIVETED FOR 1/2 LENGTH & TO SINGLE AT ENDS.
BUTTS OF WELL PLATING DOUBLE RIVETED.
SEAMS OF SHELL PLATING ALL D.R.
FORECASTLE SHELL SEAMS ALL S.R.
SEAMS OF DECK PLATING ALL S.R.
SEAMS OF WELL SIDE PLATING ALL S.R.

TWIN SCREW BARGE LOADING BOW WELL BUCKET DREDGER.

FOR THE MERSEY DOCKS & HARBOUR BOARD.

"MERSEY ENGINEER"

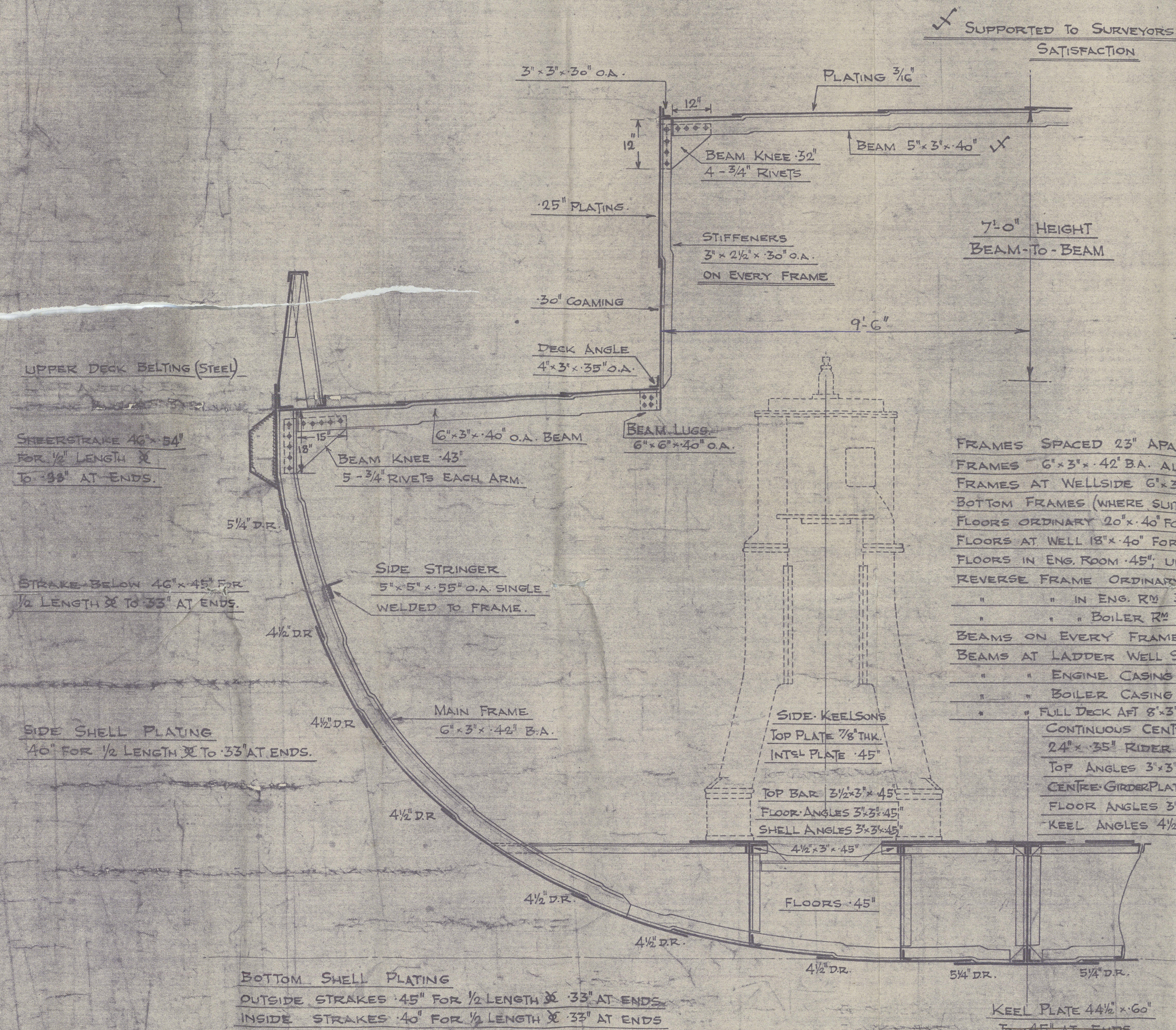
YARD No 388

: HULL SECTIONS :

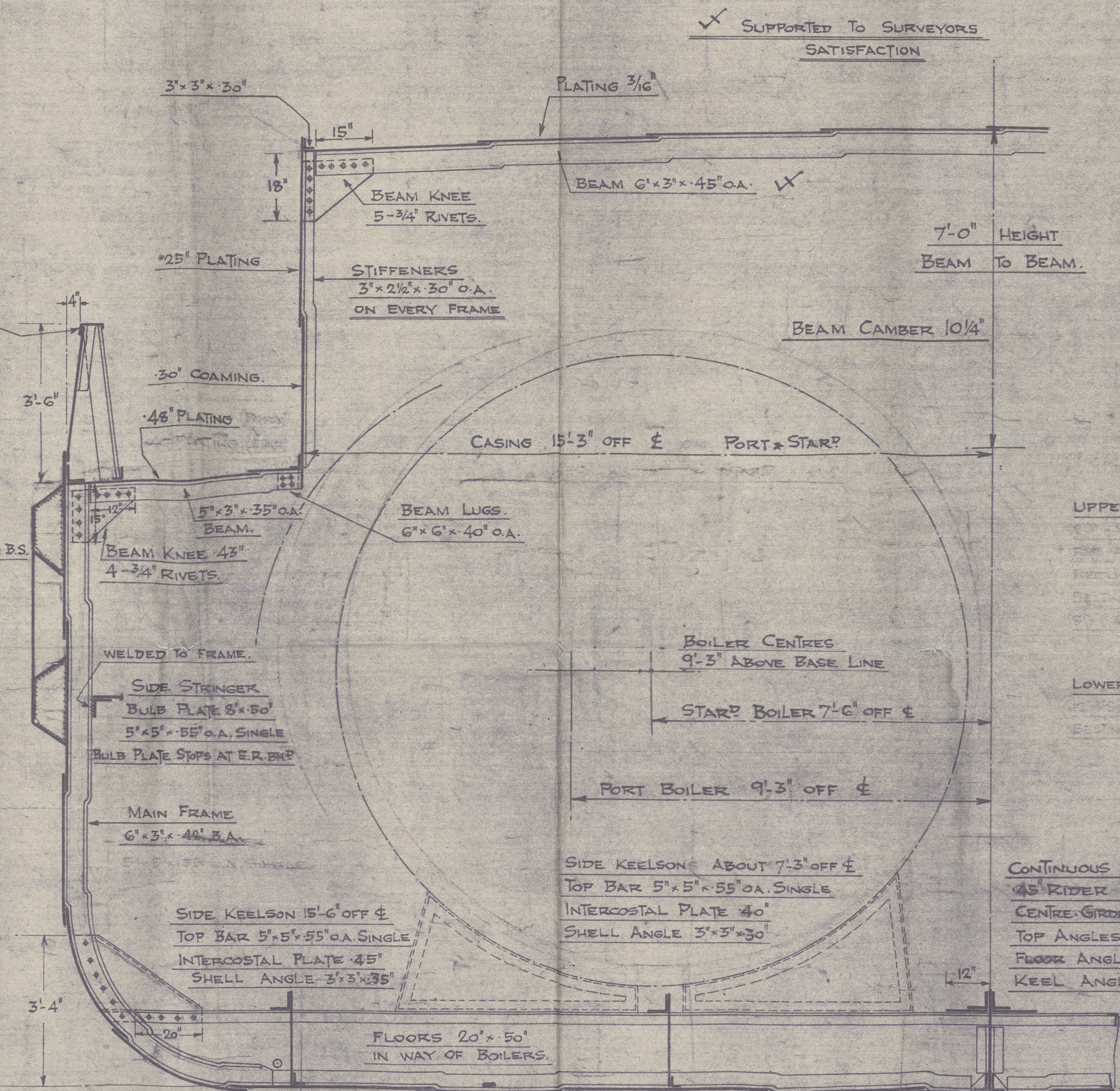
SCALE: 1/2" = 1'-0"

EQUIPMENT.

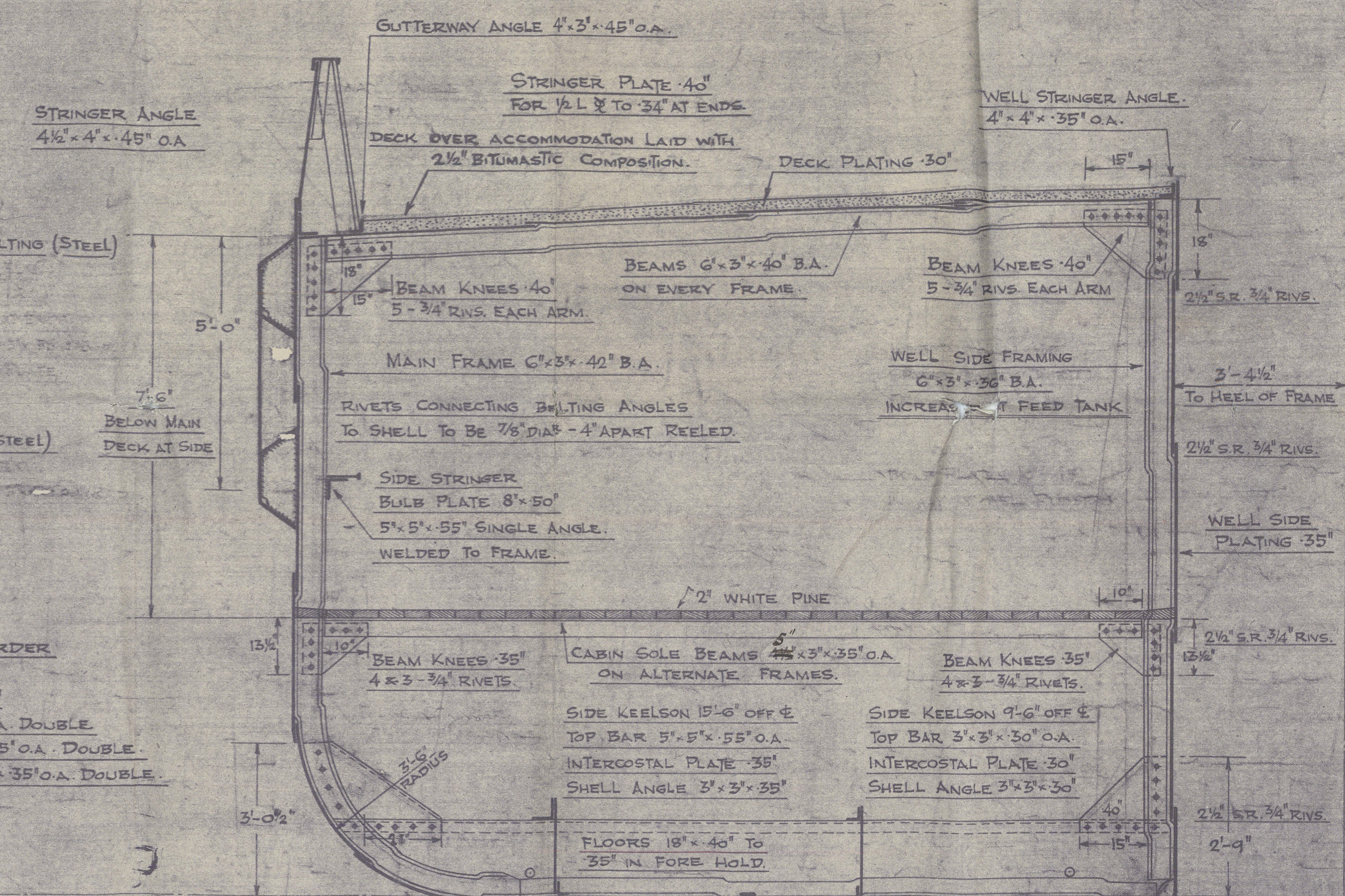
- 2 - ANCHORS 45 CWT. EACH PATENT STOCKLESS
- 2 - ANCHOR 30 CWT. EACH PATENT STOCKLESS
- 250 - FATHOMS 1 1/4" SHORT LINK CHAIN
- 250 - FATHOMS 1 1/4" SHORT LINK CHAIN
- 600 - FATHOMS 1 1/8" SHORT LINK CHAIN
- 90 - FATHOMS 9" TOW LINE
- 90 - FATHOMS 6" HAWSER.
- 90 - FATHOMS 5" WARP.
- 2 - HEAVING LINES 12 THREAD 15 FATHOMS EACH.



SECTION THRO ENGINE ROOM



SECTION THRO BOILER ROOM



SECTION THRO LADDER WELL

APPROVED AT LLOYDS
9/4/47

APPROVED AT LLOYDS
1/10/47

Ferguson Bros (P.C) Ltd

Land No 388

"Messing Engineer" ★

Hull Section

as fitted

GREENOCK FIRST ENTRY REPORT NO 23951

RECORDS DEPT.,
LONDON

2



© 2020

Lloyd's Register
Foundation

005293-605300-0096