

NUMERALS

L x D ----- 2635
L x (B+D) --- 7480.

EQUIPMENT.

1ST BOWER ANCHOR 11 1/4 CWTs. - STOCKLESS
2ND " " 10 1/4 " " " "
KEDGE ANCHOR 4 " EX STOCK
150 FMS 1 1/16" STUD LINK CABLE.
60 " 6/10 x 18 G. 4" COMBINATION ROPE.
60 " DITTO " DITTO.

MIDSHIP SECTION. STEEL SCREW TRAWLER.

N^{OS} 1179-1180.

170'-0" B.P. x 28'-6" MLD. x 15'-6" MLD.

TO CLASS 100. A.1. ~ STEAM TRAWLER.

SCALE 1/2 IN. = 1 FT.

RIVETING

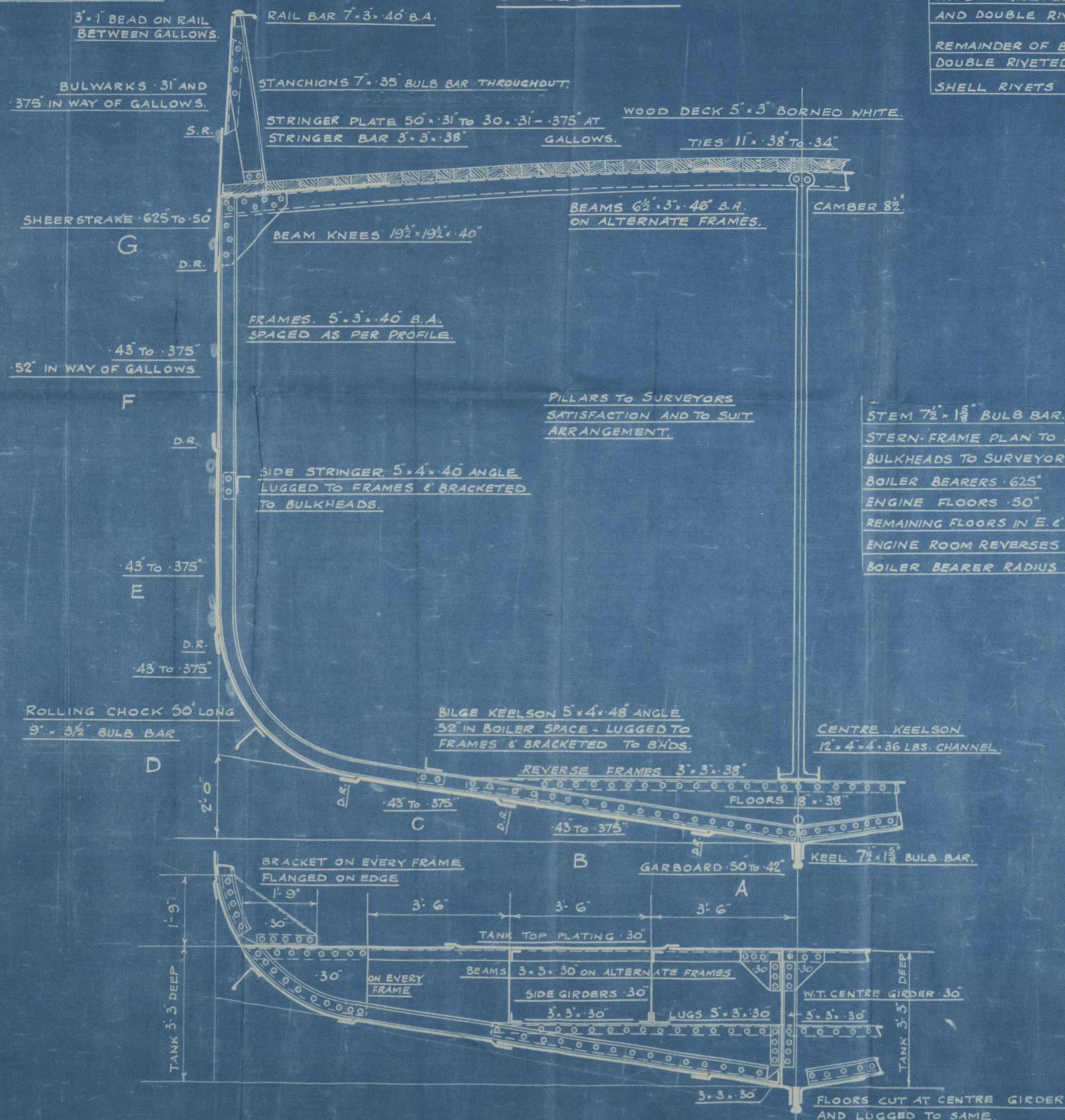
ALL LANDING EDGES TO BE DOUBLE RIVETED
EXCEPT TOP EDGE OF SHEER STRAKE WHICH
IS TO BE SINGLE RIVETED.

BUTTS OF GARBOARD AND SHEER STRAKE
STRAPPED AND TREBLE RIVETED FOR 1/2 LENGTH
STRAPPED AND DOUBLE RIVETED AT ENDS.

BUTTS OF E & F STRAKES OVERLAPPED AND
TREBLE RIVETED FOR 1/2 LENGTH, OVERLAPPED
AND DOUBLE RIVETED AT ENDS.

REMAINDER OF BUTTS OVERLAPPED AND
DOUBLE RIVETED ALL FORE AND AFT.

SHELL RIVETS TO BE STEEL - REMAINDER IRON.



005269-005279-0167

PLAN No. 216
FOR ENCLOSURE TO
J. Hays R. of J.
FROM
COCHRANE & SONS, LTD.
SHIPBUILDERS, SELBY.
DATE 13/3/37

Cochrane & Sons Ltd

Yara No. 1179-80

Machine Section

(as built)

S.S. Man o' War
ILL REPORT No. 47766

RETAIN

005269-005279-0167



© 2020

Lloyd's Register
Foundation