

# RUDDER

SCALE  $\frac{3}{4}$ " = 1 FOOT.

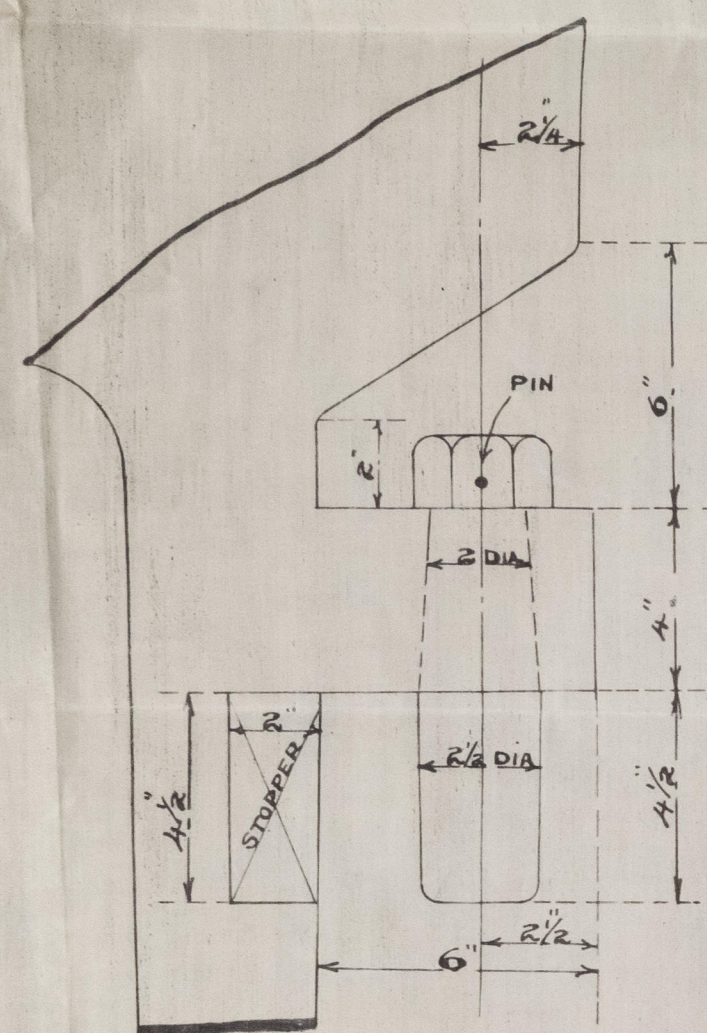
HOLES DRILLED  $\frac{5}{8}$ " DIA. APART FOR  $\frac{3}{4}$ " RIVETS

NUMERAL FOR RUDDER 50-86.

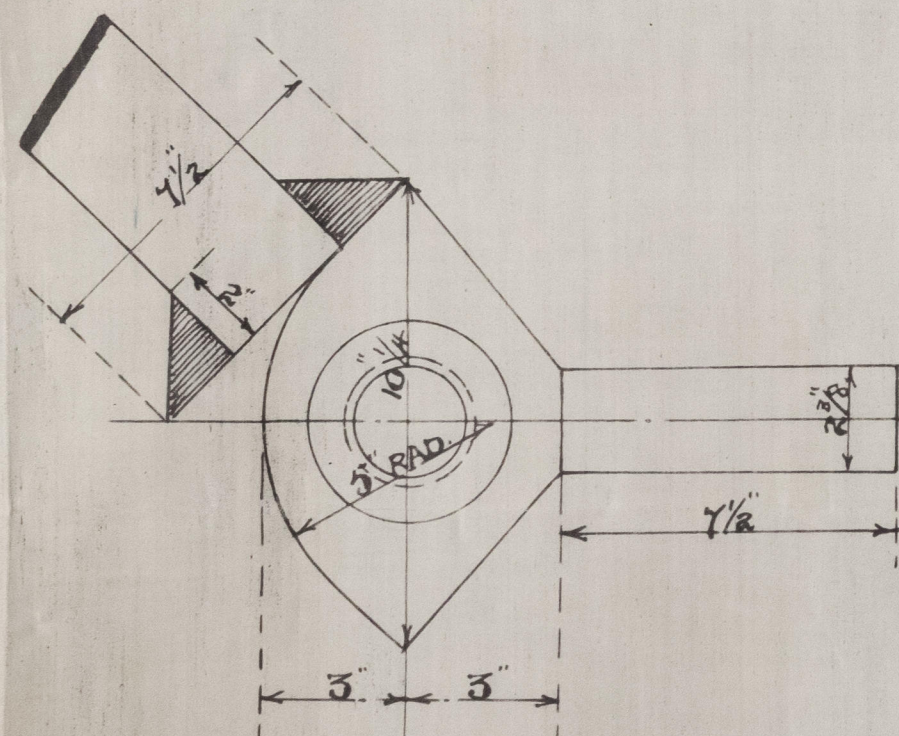
PLATES - 26

SPEED  $10\frac{1}{2}$  KNOTS.

3.8.15



ENLARGED VIEW OF LOOSE PINTLES  
NOTE: CARE TO BE TAKEN THAT CENTRES OF PINTLES IN RUDDER ARE IN LINE WITH CENTRES OF HOLES IN GUDGEONS.



ENLARGED SKETCH OF STOPPER  
RUDDER TO HEEL OVER TO  $45^\circ$

SUBMITTED TO LLOYDS JULY 29<sup>TH</sup> 1915  
APPROVED BY

COOK, WELTON & GEMMELL LTD  
SHIPBUILDERS  
BEVERLEY.

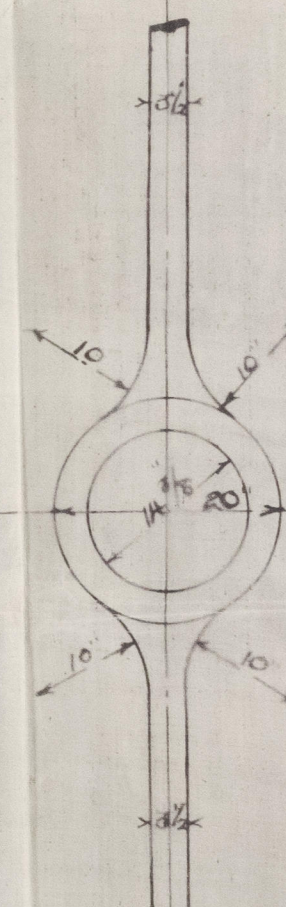
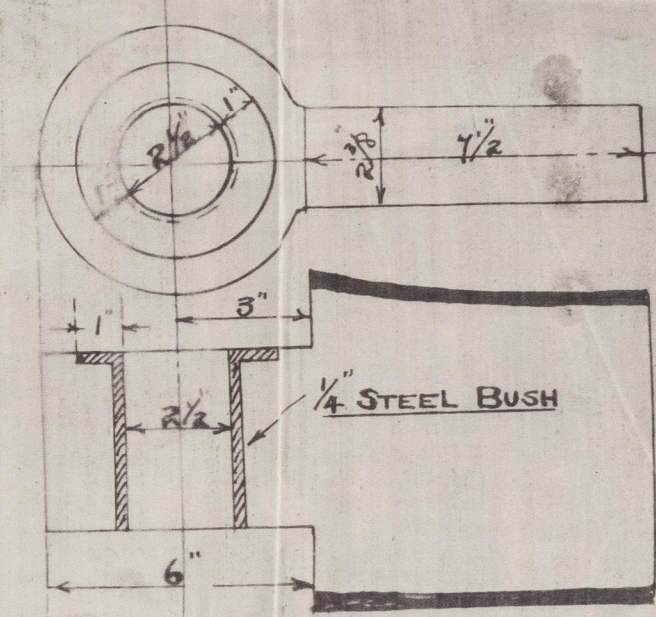
N<sup>o</sup> 340

# STERN FRAME

SCALE  $\frac{3}{4}$ " = 1 FOOT.

HOLES PITCHED  $1\frac{3}{4}$ " x 2" FROM INNER EDGE OF POST  
HOLES DRILLED FOR 1" RIVETS  $\frac{5}{8}$ " DIA. APART.

ENLARGED VIEW OF STEEL BUSHES  
IN STERN FRAME GUDGEONS.



NOTE CARE TO BE TAKEN THAT THIS DIMENSION IS BORED EXACTLY TO SIZE GIVEN.

3.8.15.

SEARCH ONE SIDE  
1.2 3/4  
1/8  
1/4 TIPS  
© 2020 Lloyd's Register Foundation



N<sup>o</sup> 340

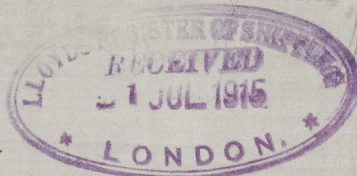
RUDDER

+

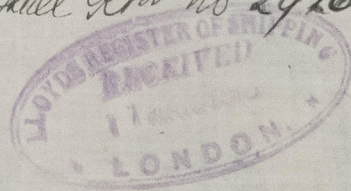
STERN FRAME

COOK WELTON

+ GEMMELL L<sup>d</sup>



*Mont Hall Apt No 29766*



© 2020

Lloyd's Register  
Foundation

005258-005268-0109