

# Lloyd's Register of Shipping.

## SURVEYS FOR FREEBOARD.

### (CONDITIONS OF ASSIGNMENT.)

Index No. 38394  
(For London Office only).

Ship's Name "EMPIRE NINA" N.N. GUARDSMAN

Port of Survey HULL.

Official Number

180474

Surveyor's Signature

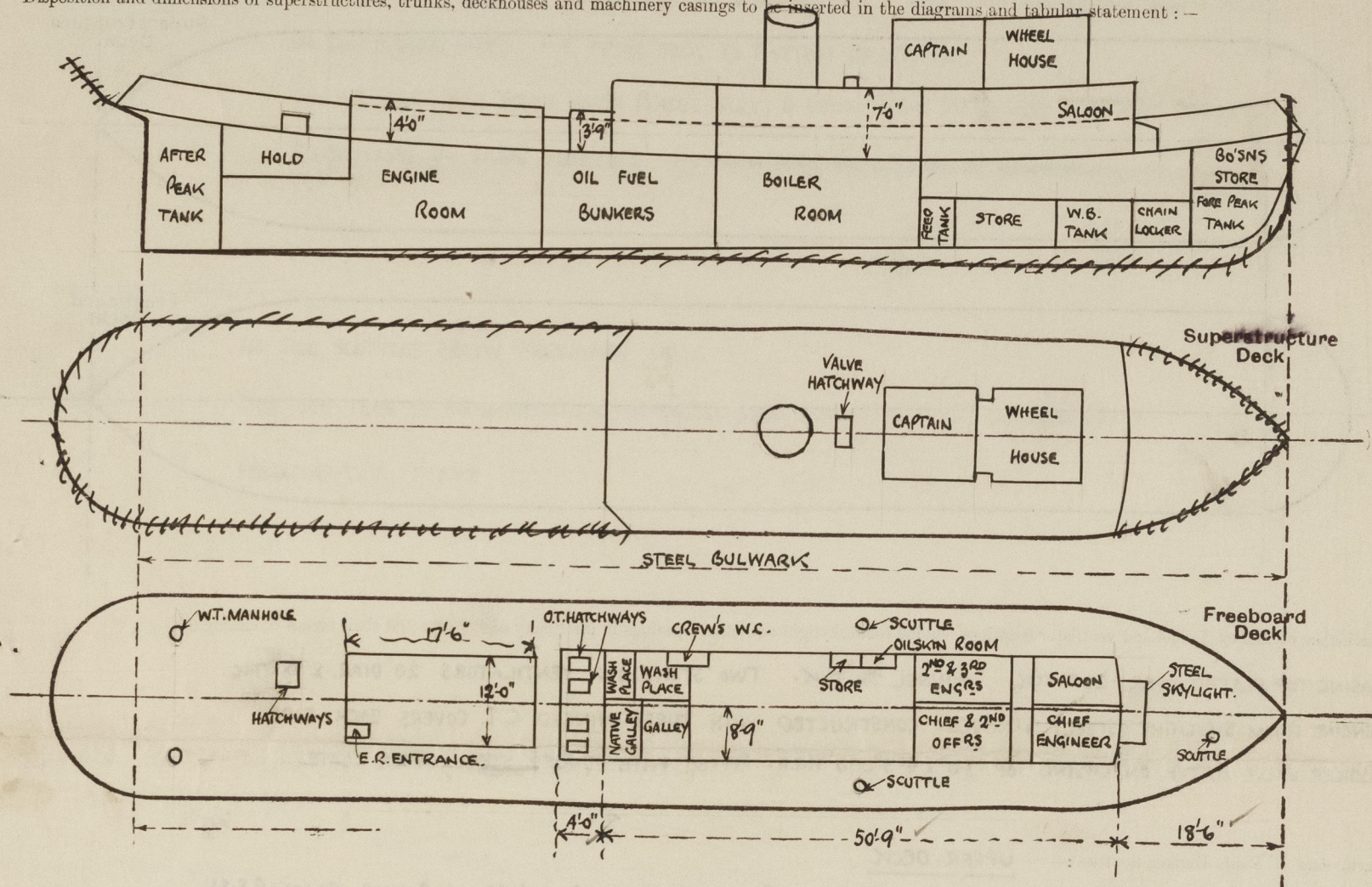
J. Macleod

Nationality and Port of Registry BRITISH, - HULL.

Date of Survey

During construction.

Disposition and dimensions of superstructures, trunks, deckhouses and machinery casings to be inserted in the diagrams and tabular statement:--



Particulars of Superstructures, Trunks, Casings, Deckhouses.

	Coaming	Plating	Stiffeners	Spacing	End Attachments of Stiffeners	Size of Openings	Height of Sills	Height of Casings
Poop Bulkhead ...								
Raised Quarter Deck Bulkhead ...								
Bridge, After Bulkhead ...								
Bridge, Forward Bulkhead ...								
Forecastle Bulkhead ...								
Trunk, Aft ...								
Trunk, Forward ...								
Exposed Machinery Casings on Freeboard or Raised Quarter Deck (ENGINE CASING) ...	28 ✓	✓	3" x 2 1/2" x 30" ✓	30" ✓	BKTS. AT TOP	2'9" x 2'6" ✓	18" ✓	4'0" ✓
Exposed Machinery Casings on Superstructure Decks (BOILER CASING) ...	15" x 31" ✓	26 ✓	6 x 3 x 40 E & 3 x 2 1/2 x 30" ✓	ABT. 27" ✓	" " "	4'3" x 1'9" ✓	24" ✓	7'0" ✓
Machinery Casings within Superstructures not fitted with Class I Closing Appliances ...	✓							
Deckhouses on Flush Deck Ships ...	✓	26 ✓	3" x 2 1/2" x 30" ✓	ABT. 30" ✓	BKTS. AT TOP	4'2" x 1'8" ✓	19" to 24" ✓	7'0" ✓

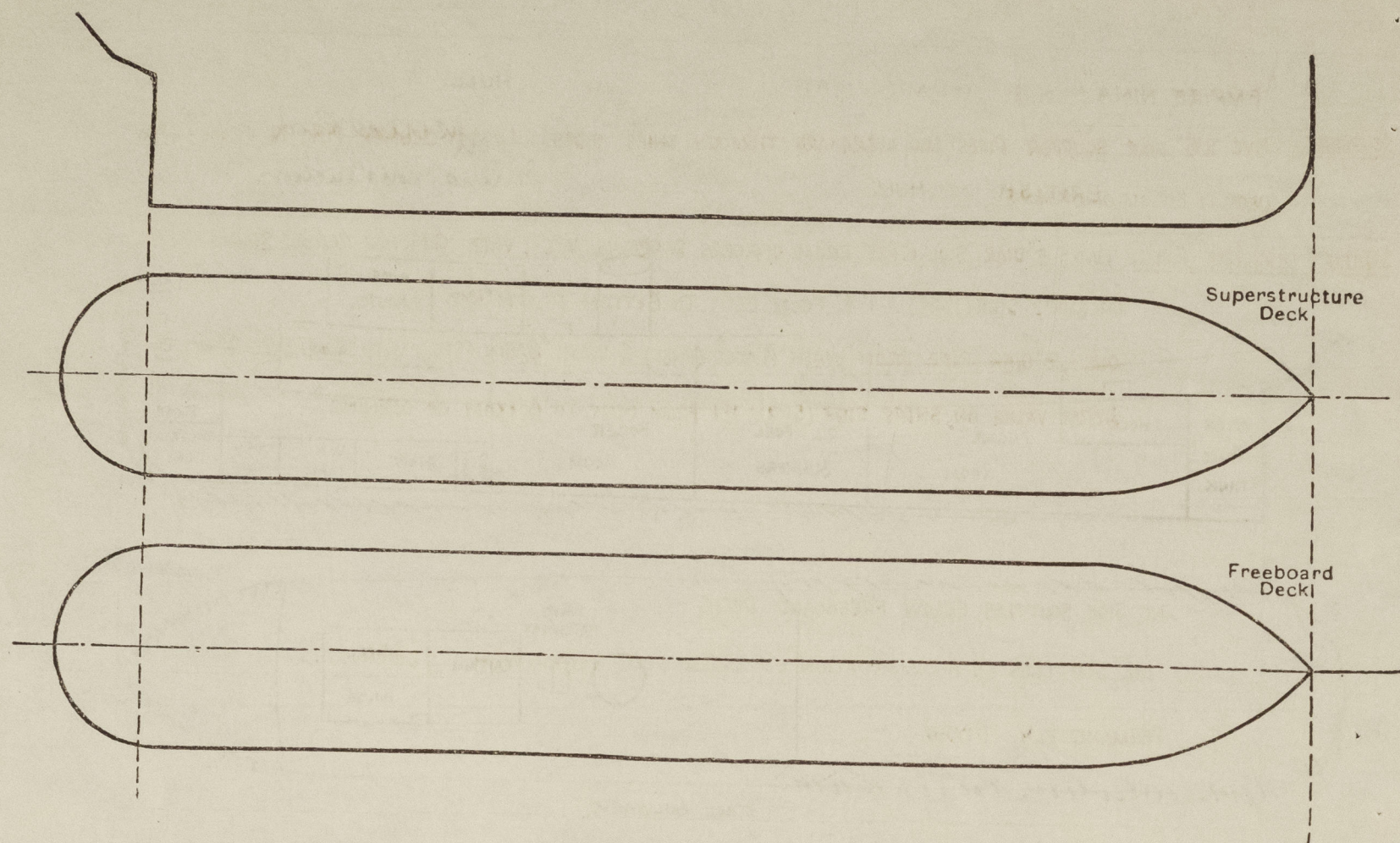
Particulars of Closing Appliances (state if capable of being manipulated from both sides).

Poop Bulkhead ...	
Raised Quarter Deck Bulkhead ...	
Bridge, After Bulkhead ...	
Bridge, Forward Bulkhead ...	
Forecastle Bulkhead ...	
Exposed Machinery Casings on Freeboard or Raised Quarter Deck ...	TO BOILER ROOM (P.&S). STEEL DOORS 4'3" x 1'9" - 24" SILLS. ✓ TO ENGINE ROOM - WOOD DOOR 2'9" x 2'6" - 18" SILL. ✓
Exposed Machinery Casings on Superstructure Decks ...	TEAK SLIDING TOP. ✓ DOORS OPERATED FROM BOTH SIDES. ✓
Machinery Casings within Superstructures not fitted with Class I Closing Appliances ...	✓
Deckhouses on Flush Deck Ships ...	SALOON PASSAGE (P.&S) WOOD DOORS 4'2" x 1'8" - 24" SILLS. ✓ STEEL DOORS TO PASSAGE, GALLEY & NATIVE GALLEY, OFFICERS W.C., OILSKIN ROOM, STORE, CREW'S WASH PLACES & W.C. (PORT SIDE). SILLS 19" TO 21" ✓ DOORS OPERATED FROM BOTH SIDES. ✓



# PARTICULARS OF PROTECTION TO OPENINGS, ETC.

The following diagrams should be used to indicate the positions of cargo and coaling hatchways, gangway, cargo and coaling ports, ventilators, companionways, etc., which would affect the seaworthiness of the ship:—



Particulars of fiddle, funnel and ventilator coamings, engine room skylight and other openings in machinery casing tops and their means of closing:—

CASING TOP PLATED OVER .26 THICK. FUNNEL  $\frac{3}{16}$ " THK. TWO STOKES VENTILATORS 20" DIAR. X  $\frac{1}{8}$ " THK.  
ENGINE ROOM SKYLIGHT (STEEL) STRONGLY CONSTRUCTED WITH THREE HINGED C.I. COVERS EACH SIDE.  
BOILER VALVE HATCH ON CASING TOP 3'-0" X 2'-3" X 10" HIGH. FITTED WITH HINGED STEEL COVER PLATE.

Particulars of Flush Bunker Scuttles:— UPPER DECK.

FLUSH BUNKER SCUTTLES TO BO'SNS STORE FORWARD & GALLEY COAL BUNKERS IN BOILER ROOM (P. & S).  
WOOLLON'S NO 2 TYPE WITH SCREW JOINT & CHAIN ATTACHMENT.

Particulars of Companionways:— UPPER DECK.

TO ENGINE ROOM. PLATING .28. STIFFENERS 3" X  $2\frac{1}{2}$ " X .30 ANGLES SPACED 30" APART.  
2'-9" X 2'-6" X 18" SILL. HINGED TEAK DOOR & SLIDING TOP.

Particulars of Ventilators in exposed positions on freeboard and superstructure decks:— UPPER DECK.

13" DIAR. FRENCH HEAD VENT. AT FORWARD SKYLIGHT (PORT SIDE). 7'-4" FROM DECK TO OPENING. BRACKETED TO BRIDGE DECK.  
3'-5" " S.N. VENTS. (S.S.) & 2 ON PORT SIDE FORWARD - 16" FROM DECK TO OPENING.  
1'-5" " " VENT TO HOLD (PORT) & 1 TO LAMP ROOM (S.S.) - 16" " " " "  
7" DIAR. FRENCH HEAD VENT. TO ENGINE ROOM (PORT). 2'-5" " " " "  
7" " " " " " (STD) 3'-4" " " " " " BRACKETED TO CASING  
6" X 4" G.N. VENT. TO FOOD STORE (PORT). 5'-5" FROM DECK TO OPENING. ATTACHED TO DECKHOUSE SIDE PLATING.  
BRIDGE DECK. 3'-5" DIAR. S.N. VENTS (PORT) & 2 ON STAR SIDE TO CABINS - 16" FROM DECK TO OPENING.  
5" DIAR. COWL VENT. TO PANTRY - COAMING 31" X  $\frac{3}{16}$ " THK. CANVAS COVERS SUPPLIED FOR FRENCH HEAD VENTS.  
8" " " " " GALLEY - 18" X  $\frac{5}{8}$ " " " WOOD PLUGS " " G.N. VENTS.  
7" " " " " NATIVE GALLEY - 21" X  $\frac{5}{16}$ " " " WOOD PLUGS & CANVAS COVERS SUPPLIED FOR COWL  
1'-5" " " " " " FOOD STORE " 30" X  $\frac{3}{16}$ " " " VENTS.  
6" X 4" G.N. VENT TO CHIEF & 2ND OFFICER'S CABIN. 1'-5" FROM DECK TO OPENING. ALL COAMINGS OF RULE THICKNESS

Particulars of Air Pipes in exposed positions on freeboard, raised quarter, or superstructure decks:— UPPER DECK

TO FORE PEAK TANK. 2" DIAR. 3'-4" FROM DECK TO OPENING. PROTECTED BY BULWARK. ANTI-SABOTAGE EXTENSION TUBES FITTED TO  
" W.B. TANK (P. & S). 2" " 2'-7" " " " " " " " ENDS OF ALL AIR PIPES TO TANKS & CANVAS  
" F.W. " (") 2" " 2'-6" " " " " " " " COVERS SUPPLIED.  
" STORE ROOM " 2" " 2'-7" " " " " " " " AIR PIPES TO OIL FUEL BUNKERS FITTED  
" FEED TANK (") 2" " 2'-6" " " " " " " " WITH TWO WIRE GAUZE COVERS.  
" OIL FUEL TANKS 3" " 2'-6" " TRUNK TOP TO OPENING. " " DECKHOUSE.  
" AFTER PEAK TANK (P. & S) 2" " 2'-3" " DECK TO OPENING.  
" TRANSOME SPACE 2" " 2'-2" " " " " " "

Particulars of Gangway Cargo and Coaling Ports:—

NONE.

Particulars of Scuppers and Sanitary Discharge Pipes:—

SCUPPERS. FIVE  $2\frac{1}{2}$ " DIAR. SCUPPER PIPES LED OVERBOARD THROUGH SHIP'S SIDES. LOWEST SCUPPER PIPE 18" FROM UPPER DECK TO BOTTOM OF OPENING. ✓

SANITARY DISCHARGE PIPES. TWO - 4" DIAR. SOIL PIPES FROM OFFICERS' & CREW'S W.C.s. WITH G.M. NON-RETURN STORM VALVES ON SHIP'S SIDE (PORT). 1'-4" FROM DECK TO BOTTOM OF OPENING. ✓  
ONE - 2" DIAR. PIPE FROM WASH PLACES (PORT) & WASH BASIN (STD) WITH G.M. NON-RETURN STORM VALVE ON SHIP'S SIDE (STD). 1'-1" FROM DECK TO BOTTOM OF OPENING. ✓

Particulars of Side Scuttles:—

NO SIDE SCUTTLES BELOW FREEBOARD DECK. ✓

SIDE SCUTTLES TO ACCOMMODATION ON UPPER DECK FITTED WITH C.I. DEADLIGHTS

PERMANENTLY FIXED. ✓

Vertical distance of Sill of lowest Side Scuttle above top of keel ✓

Particulars of Guard Rails:—

UPPER DECK. STEEL BULWARK ALL FORE & AFT. ✓

Particulars of Gangways, Lifelines, etc.:—

NONE

## Particulars of Freeing Arrangements.

	Length of Bulwark	Height of Bulwark	Size of Freeing Ports	Number each side	Area each side	Rule area each side
After Well ... ..	115'-0"	3'-0"	2'-0" X 1'-0"	6	12 sq. ft.	16.1 ft
Forward Well ... ..						

State position of each freeing port ... .. { After Well:— FROM A.P. 15'-0" - 28'-9" - 41'-3" - 55'-6" - 67'-9" - 81'-0"  
(F. and A. position and height above deck edge) { Forward Well:— 7'-2" ABOVE DECK EDGE.

State whether the freeing ports are fitted with shutters, bars, or rails, and give particulars of such:— BALANCED SHUTTER TYPE.

Additional area where sheer is less than standard.



PARTICULARS OF PROTECTION TO OPENINGS, ETC.

HATCHWAYS ON FREEBOARD <del>AND SUPERSTRUCTURE</del> DECK									
Description of Hatchway ... ..			HATCHWAY TO HOLD AFT	HATCHWAYS TO OIL FUEL TANKS					
Dimensions of Hatchway ... ..			5'-0" x 3'-0"	4 - 2'-6" x 1'-6"					
COAMINGS	{	Height above Deck ... ..	18" ✓	12" ABOVE TRUNK TOP					
		Thickness { Sides ... ..	3/8" ✓	3/8" ✓					
		{ Ends ... ..	3/8" ✓	3/8" ✓					
		Stiffeners ... ..	NONE	NONE					
Brackets, Stays ... ..									
HATCH BEAMS	{	Number ... ..	NONE	NONE					
		Spacing ... ..							
		Scantling and Sketch ... ..							
		Bearing Surface ... ..							
FORE AND AFTERS	{	Number ... ..	NONE	NONE					
		Spacing ... ..							
		Unsupported Lengths ... ..							
		Scantling* and Sketch ... ..							
Bearing Surface ... ..									
HATCH COVERS	{	Material ... ..	PINE	STEEL PLATE					
		Thickness ... ..	3"	50					
		How fitted ... ..	ATHWARTSHIPS	SECURED BY 6 G.M. TOGGLES & STEEL EYEBOLTS					
		Bearing Surface ... ..	3"						
Spacing of Cleats ... ..			24"						
Number of Tarpaulins ... ..			2 ✓	✓					
<p>*Are wood fore and afters steel shod at all bearing surfaces? ✓</p> <p>Are battens and wedges efficient and in good condition? Yes. ✓</p> <p>Are tarpaulins in good condition and in accordance with rule requirements? Yes. ✓</p> <p>Are lashings provided in accordance with rule requirements? Yes. ✓</p>									

Particulars of any special features:—

Endorsement at first survey and at surveys for renewal of Certificate:—

The fittings and appliances are in accordance with the particulars shown on this form (or as now modified) and are in good condition.

