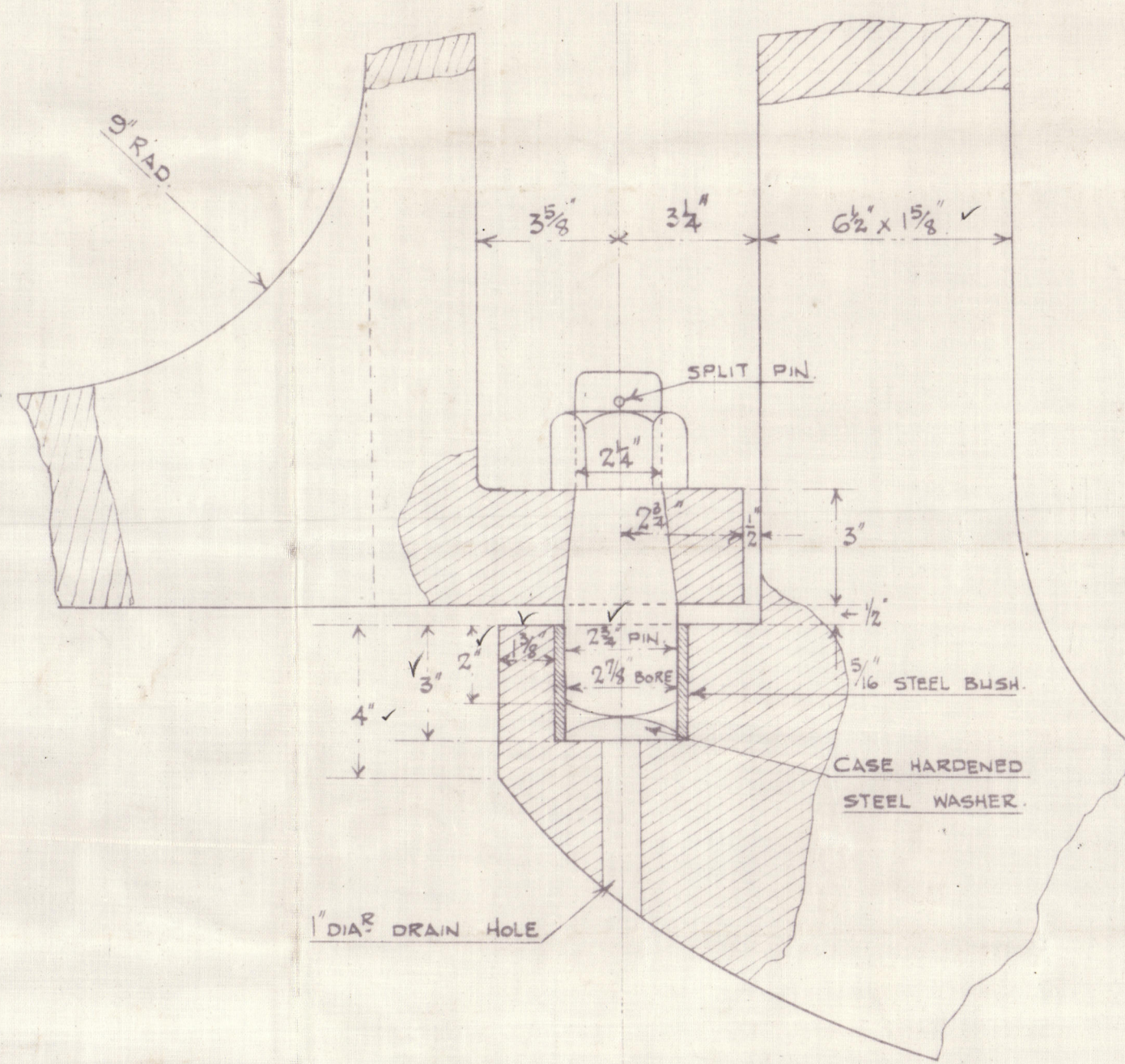
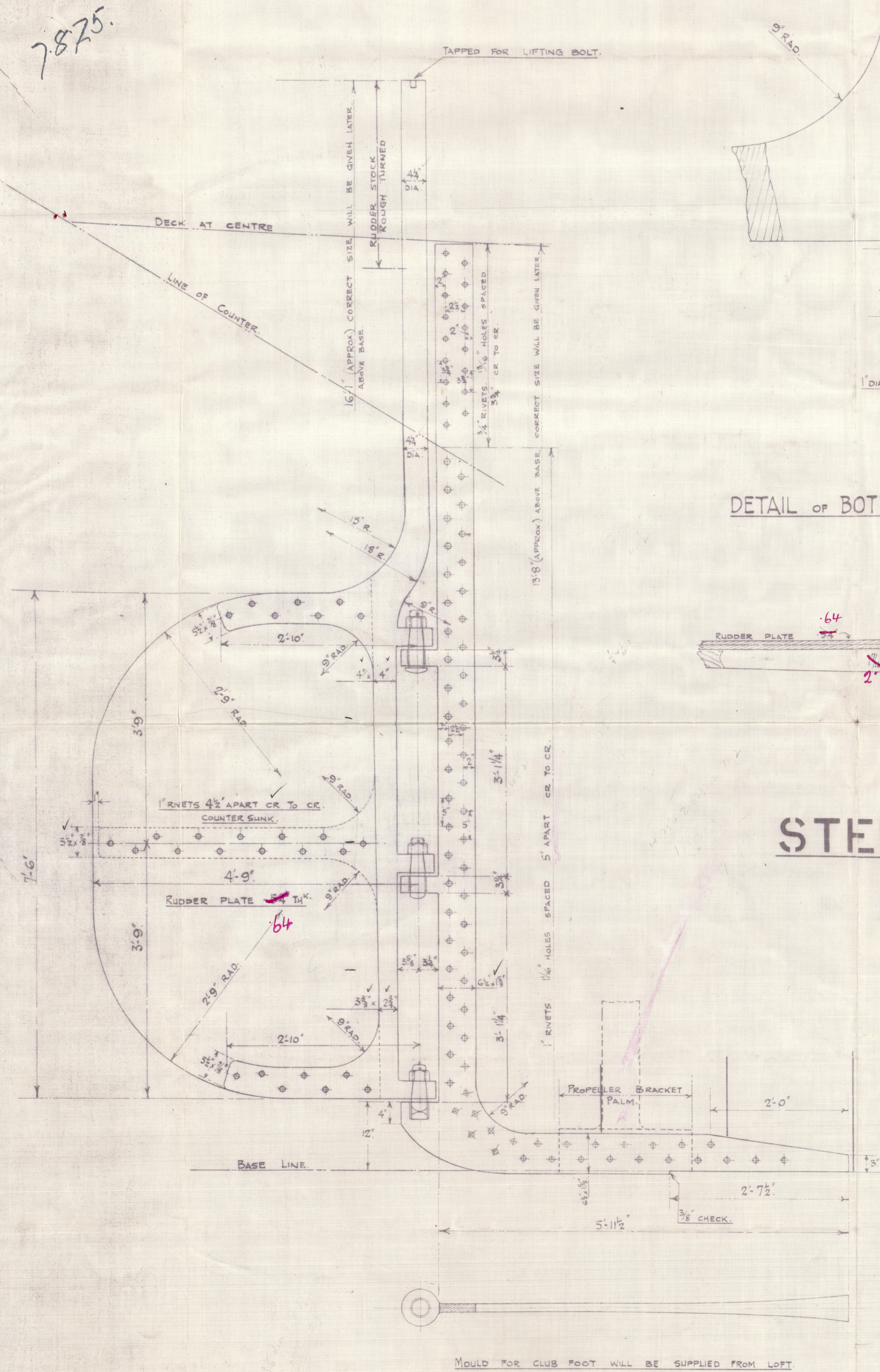
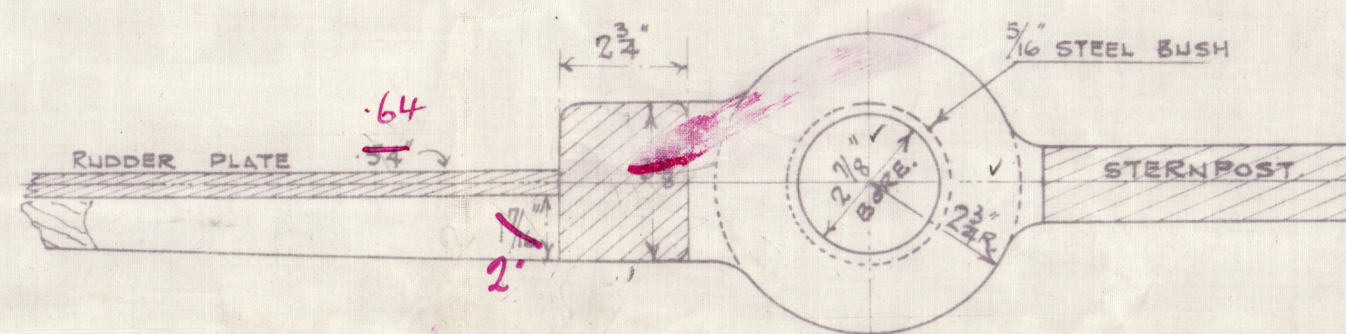


FERGUSON BROS.
(PORT-GLASGOW) LTD
SHIPBUILDERS & ENGINEERS



DETAIL OF BOTTOM PINTLE & GUDGEON.

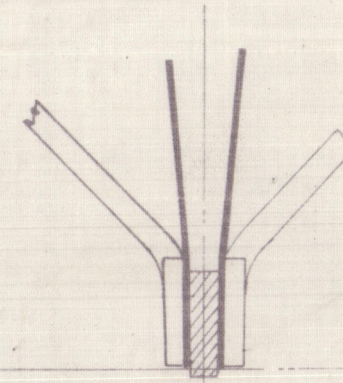


Nº 277.

STERNFRAME & RUDDER

DIMENSIONS:- 150'-0" x 29'-0" x 11'-6" MLD

SCALE:- 1" = 1 FOOT.
DETAILS:- 3" = 1 FOOT.



SECTION SHOWING
PROPELLER BRACKET
CONNECTION TO STERNFRAME.

TWIN SCREW STEAMER.

DIMENSIONS:- 150'-0" x 29'-0" x 11'-6" M^{LD}

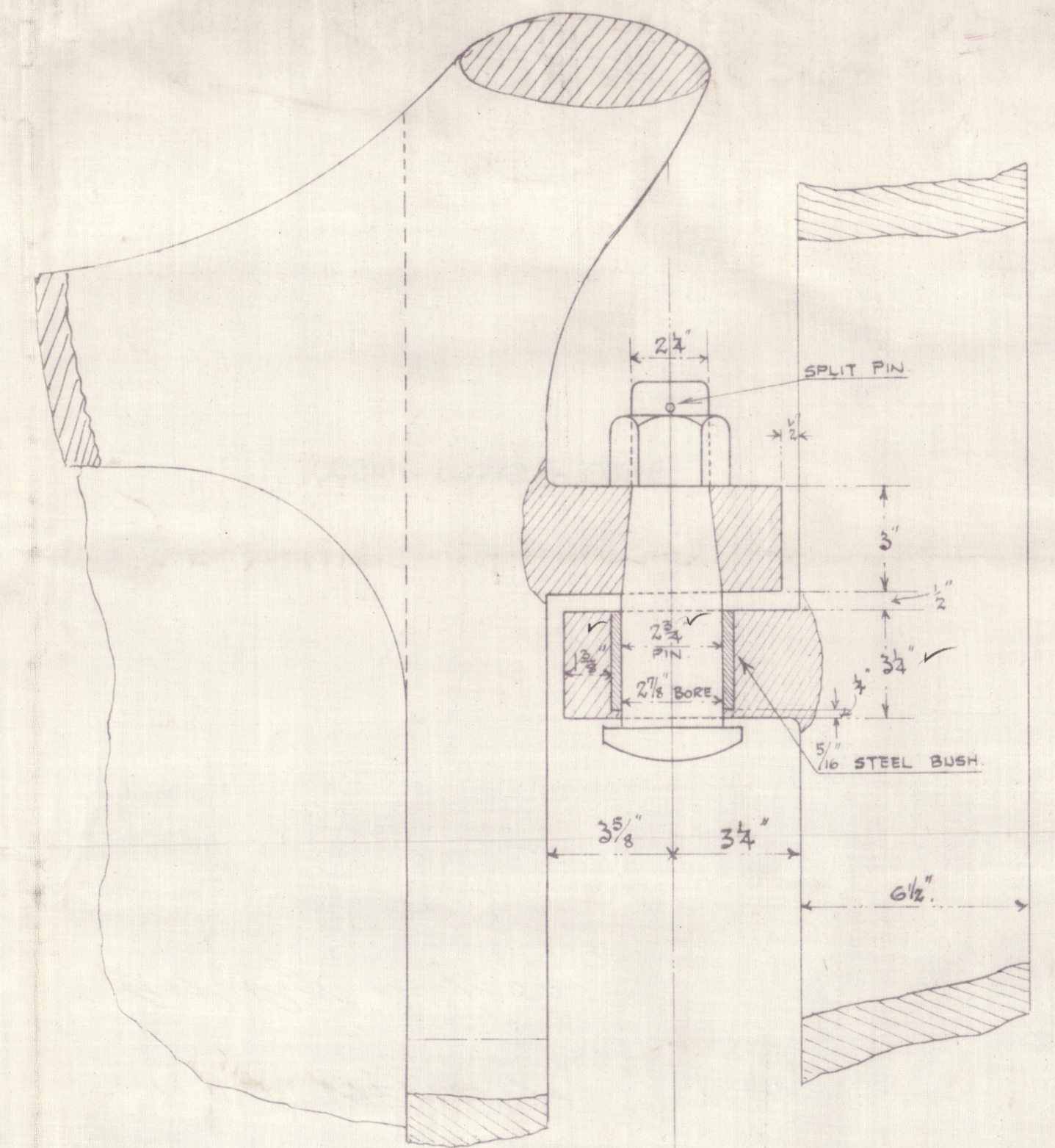
RUDDER FRAME & STOCK OF BEST HAMMERED SCRAP IRON, ARMS FORGED ON.

STERNPOST OF FORGED IRON OR STEEL.

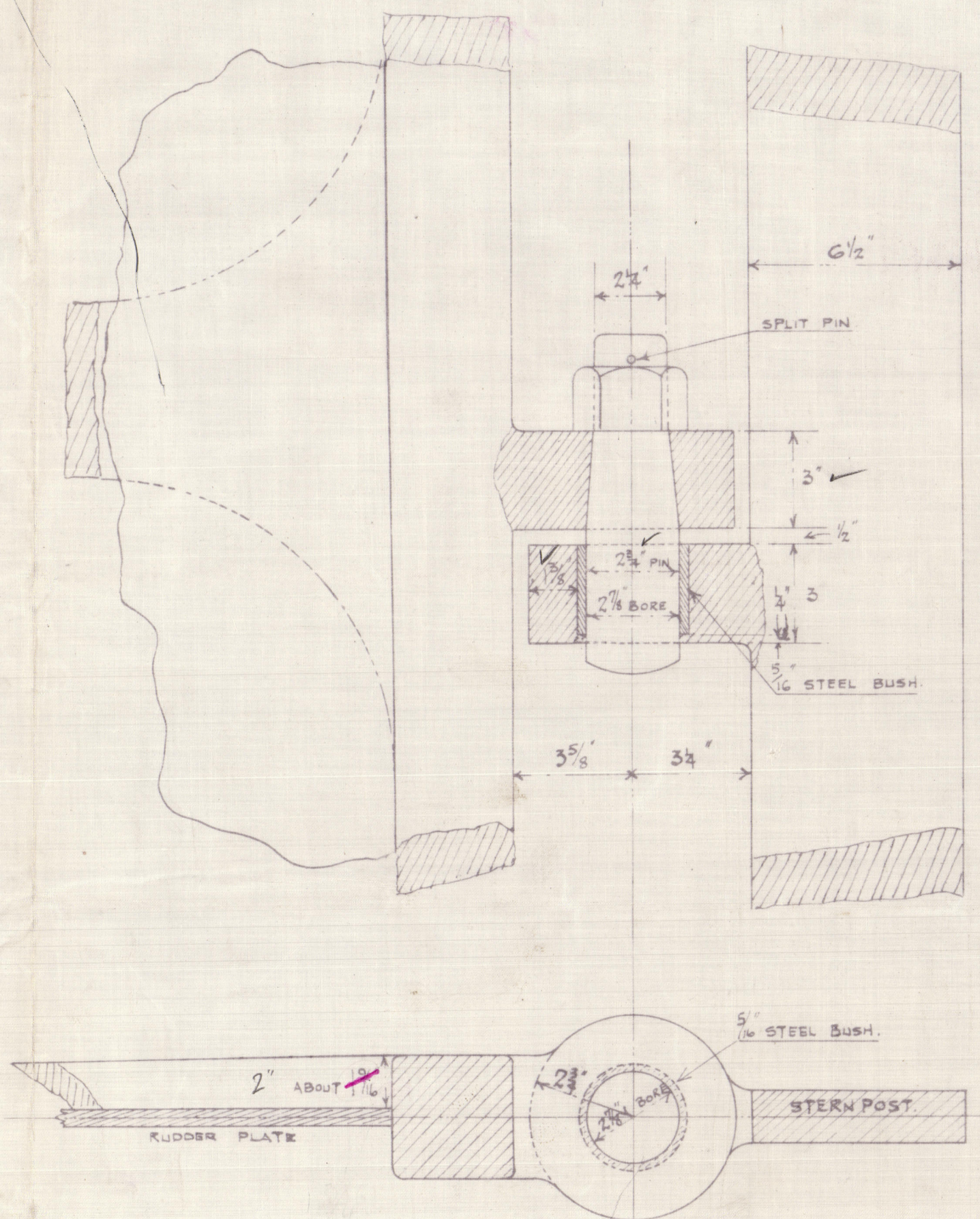
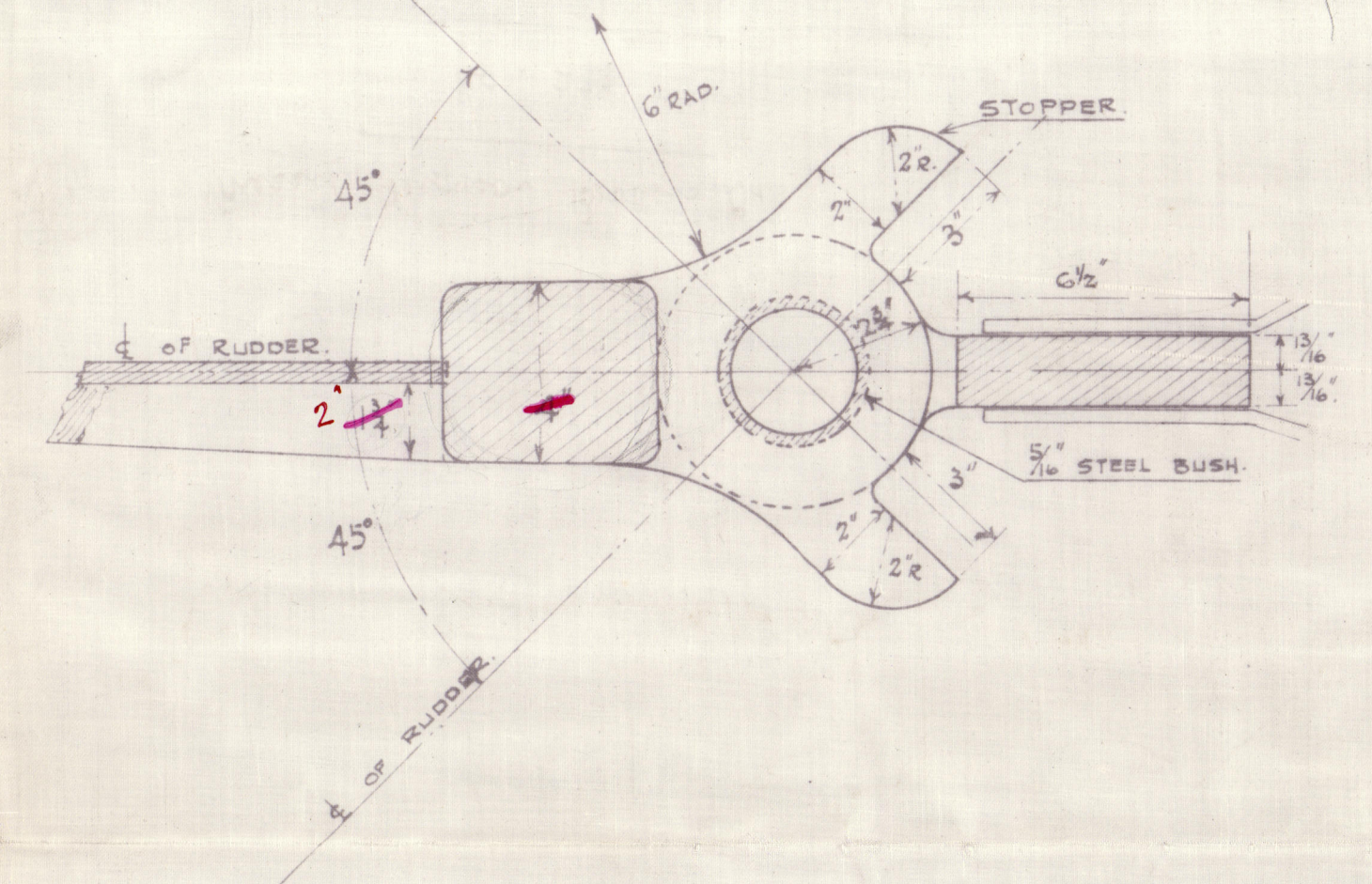
SPEED OF SHIP 10 KNOTS.

AREA OF RUDDER = 30.82 ft^2 . C.G. ABAFT C^R OF PINTLES 2.28 FT.

$$A \times D = 30.82 \times 2.28 = 70.47.$$



DETAIL OF TOP PINTLE & GUDGEON.



DETAIL of CENTRE PINTLE & GUDGEON.



Messrs. Ferguson Brothers Ltd.

No. 277

Stamford Rudder.

T. S. S. "AZANIA".

G.R. Reg. No. 18505.

005141-005153-0245



© 2020

Lloyd's Register
Foundation